


FISHWAY STATUS REPORT

Date: 1/16/2016
Inspection Period: 1/10/2016 thru 1/16/2016



**US Army Corps
of Engineers**
Portland District

JOHN DAY DAM

JD/WC Project-Fisheries
P.O. Box 823
Rufus, Oregon 97050
Phone: 541-506-7860

One inspection per day during the winter maintenance season, 1 December - 28 February.
Frequent monitoring of the PLC displays in SMF Fisheries Office as necessary.

John Day Dam	Inspections	Criteria	Total Number of Inspections:	6	Temperature:	39 F
	Out of Criteria	Limit			Secchi:	6.0 Ft.
NORTH FISHWAY			In service; meeting all FPP criteria since 1/5/16.			
Exit differential	0	≤ 0.5'				
Exit Control weirs	0	High setting	High setting is normal for JDN			
Count station differential	0	≤ 0.3'				
Weir crest depth (DS gauge)	0	1.0' ± 0.1'				
Entrance differential	0	1.0' - 2.0'	AVG	1.5		
SOUTH FISHWAY			OOS for winter maintenance since 1/7/16; upper section dewatered on 1/12/16			
Exit differential	0	≤ 0.5'				
Exit Control weirs	0	Mid setting	Mid setting is normal for JDS			
Count station differential	0	≤ 0.3'				
Weir crest depth (US gauge)	0	1.0' ± 0.1'				
South entrance differential	0	1.0' - 2.0'	AVG	#DIV/0!		
Entrance weir SE1	0	depth (≥ 8')	AVG	#DIV/0!		
Collection channel velocity	0	1.5 - 4 fps	AVG	2.87		
N. Entrance PH(Bay 19)differential	0	1.0' - 2.0'	AVG	#DIV/0!		
Entrance weir NE1	0	depth (≥ 8')	AVG	#DIV/0!		
Entrance weir NE2	0	depth (≥ 8')	AVG	#DIV/0!		
JUVENILE PASSAGE			JBS in service until 12/16/15 as required by FPP.			
Forebay/bypass conduit differential	0	4.0' - 5.0'	AVG	4.4		
Submersible traveling screens	0	visual inspect	All STSs removed by 12/30/15; their annual / winter maintenance is underway			
Turbine trashrack drawdown	0	<1.5', wkly	MU trashracks' raking as necessary per the differentials			
Vert barrier screen drawdown	0	<1.5', wkly				
Spill volume	0	N/A				
Spill pattern	0	per FPP				
Turbine Unit Priority	0	per FPP				
Turbine 1% Efficiency	0	per FPP				

SMOLT MONITORING FACILITY

Operation:

End of season dewatering completed on 11/24/15.

SMF will be OOS/ undergoing maintenance until mid March'15. JBS continues in service in its pre-SMF configuration (bypass at Crest Gate.)

Maintenance:

SMF has been winterized by JD Fisheries on 11/15. Only regular PMs will be performed this coming winter as all SMF hardware appears to be in good working order overall. The elevated chute's expansion joints appear to be in good condition, but need the surface epoxy coating.

Research:

None

Fallbacks: AVG: MAX: 0 MIN: 0

OTHER JOHN DAY ISSUES:

Birds :

see the Avian Numbers tab. We report all species and locations, but in reality only gulls in the tailrace BRZ are relevant at JD.

12 Navlock and Spillway lines are missing out of 125 grid's total; JD attempting to contract their reinstallation before May 2016; need \$...

Lines 25 and 26 have been reinstalled by a contractor by 11/21; the remaining lines had been retensioned under the same contract.

Operations:

JD North fishway returned to service and it has been meeting all FPP criteria since 1/5/16.

JD South Fishway was OOS/ on orifice flow since 1/7/16 PM . Its upper section was successfully dewatered on 1/12 AM. A relatively small # of fish was encountered/ required salvaged: 21 juvenile steelhead and 75 adult lamprey, many found in the lamprey trap at the counting station. All fish were released into tailrace in excellent condition. Thanks to Messrs. Martinson and Kovalchuk from PSMFC and to Messrs. Randall and Forrester from TD Fisheries for their gracious participation/assistance!

JDS Collection channel/entrances were dewatered on 1/13-14. 6 adult and 36 juvenile steelhead along with 20 juvenile walleye, 1 catfish, 2 carp were salvaged/ released into tailrace in excellent condition. Thanks to Messrs. Randall and Forrester from TD Fisheries for their gracious participation/ assistance!

MU Gatewell Drawdowns: Complete for 2015 passage season.

Maintenance:

JD North Fishway AWS pumps' contractor continues testing and repairing all six units.

Calibration: All gauges/ sensors are within the criteria of 0.3' .

Research:

2015 Adult Fish Counting by Normandeau Associates was completed on 10/31. The counting will commence again on 1 April 2016.

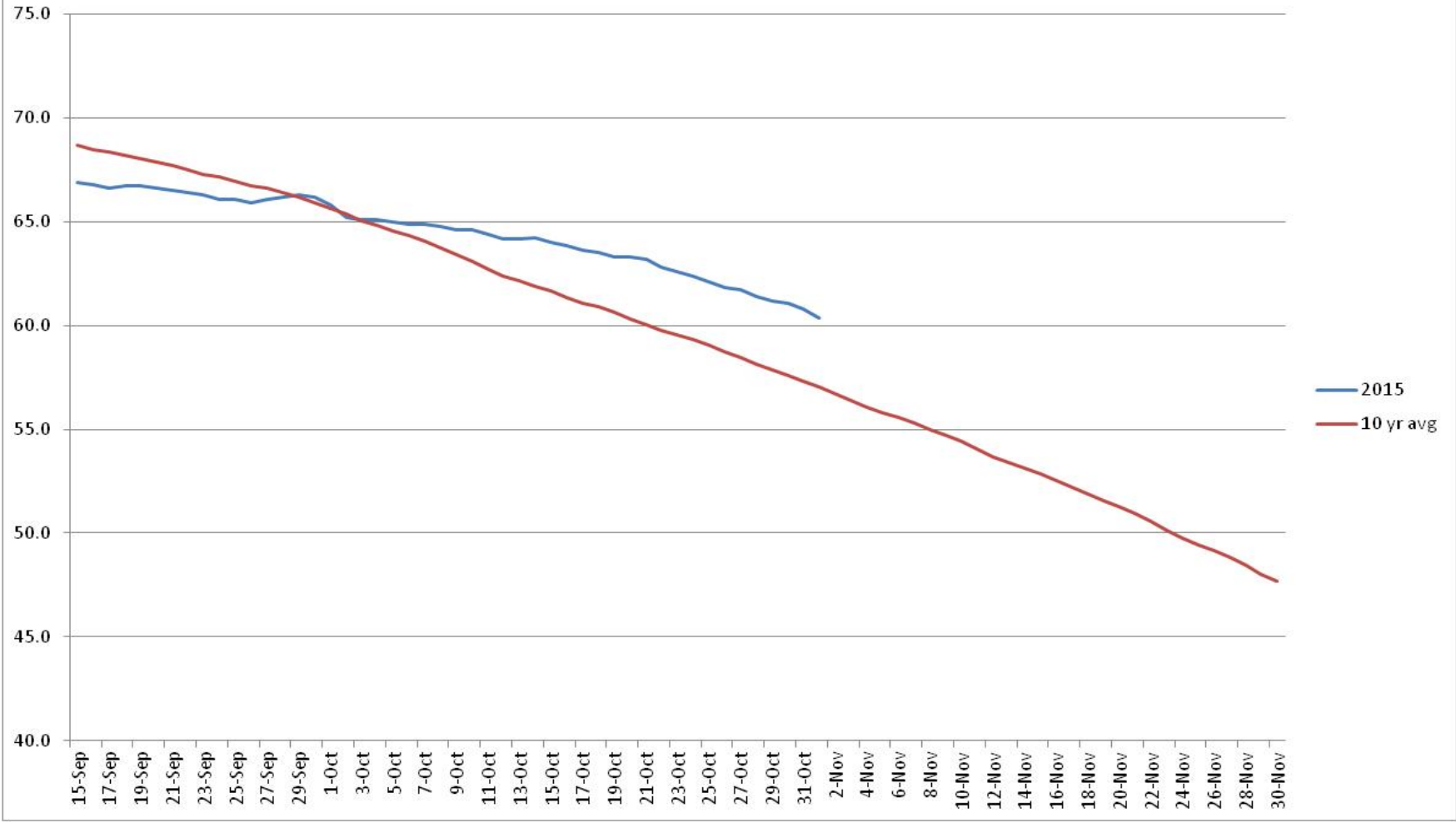
Proposal by PSMFC to install Adult PIT antennas at both JD Fishways is at the design/PDT level.

Kevin Moynahan
OPM John Day/Willow Creek Project

Date: January 16, 2016

E-Signed by MOYNAHAN,KEVIN.PATRICK,1393959157
VERIFY authenticity with ApproveIt

John Day TW Temperature



JDA Collection Channel Velocity

Date 24-Dec-15

By: MDL

Bay(s)	Time	Sec.	Velocity (f/s)
0-2	1:29	89	2.02
2 - 4	2:31	151	2.90
4 - 6	3:35	215	2.81
6 - 8	4:37	277	2.90
8 - 10	5:45	345	2.65
10 - 12	6:48	408	2.86
12 - 14	7:52	472	2.81
14 - 16	8:56	536	2.81
16 - 18	9:40	580	4.09
			2.87

JDA Bird Counts: 1/3/16 to 1/9/16

F(1): Forage AM survey F(2): Forage PM Survey NF(1): Non-Forage AM Survey NF(2): Non-Forage PM Survey

Date	Zone	Gulls				Cormorant				Caspian tern				White Pelican				Grebe				Total		
		F(1)	F(2)	NF(1)	NF(2)	F(1)	F(2)	NF(1)	NF(2)	F(1)	F(2)	NF(1)	NF(2)	F(1)	F(2)	NF(1)	NF(2)	F(1)	F(2)	NF(1)	NF(2)			
3-Jan	PHFB	0	0	0	0	1	0	0	0	0	0	0	0	0	0	0	0	0	0	0	0	0	0	1
3-Jan	SWFB	0	0	211	0	0	0	0	0	0	0	0	0	0	0	0	0	0	0	0	0	0	0	211
3-Jan	PH1	17	0	26	0	0	0	0	0	0	0	0	0	0	0	0	0	0	0	0	0	0	0	43
3-Jan	PH2	0	0	0	0	0	0	0	0	0	0	0	0	0	0	0	0	0	0	0	0	0	0	0
3-Jan	PH3	0	0	0	0	0	0	0	0	0	0	0	0	0	0	0	0	0	0	0	0	0	0	0
3-Jan	SW1	0	0	0	0	0	0	0	0	0	0	0	0	0	0	0	0	0	0	0	0	0	0	0
3-Jan	SW2	0	0	0	0	0	0	0	0	0	0	0	0	0	0	0	0	0	0	0	0	0	0	0
3-Jan	SW3	0	0	0	0	0	0	47	0	0	0	0	0	0	0	0	0	0	0	0	0	0	0	47
Avg/Survey		9		119		1		24		0		0		0		0		0		0		0		302
4-Jan	PHFB	0	0	0	0	0	0	0	0	0	0	0	0	0	0	0	0	1	0	0	0	0	0	1
4-Jan	SWFB	0	0	183	0	0	0	0	0	0	0	0	0	0	0	0	0	0	0	0	0	0	0	183
4-Jan	PH1	23	0	0	0	6	0	0	0	0	0	0	0	0	0	0	0	0	0	0	0	0	0	29
4-Jan	PH2	0	0	0	0	0	0	0	0	0	0	0	0	0	0	0	0	0	0	0	0	0	0	0
4-Jan	PH3	0	0	0	0	0	0	0	0	0	0	0	0	0	0	0	0	0	0	0	0	0	0	0
4-Jan	SW1	0	0	0	0	0	0	0	0	0	0	0	0	0	0	0	0	0	0	0	0	0	0	0
4-Jan	SW2	0	0	0	0	0	0	6	0	0	0	0	0	0	0	0	0	0	0	0	0	0	0	6
4-Jan	SW3	0	0	0	0	0	0	0	0	0	0	0	0	0	0	0	0	0	0	0	0	0	0	0
Avg/Survey		12		92		3		3		0		0		0		0		1		0		0		219
5-Jan	PHFB	0	0	13	0	0	0	0	0	0	0	0	0	0	0	0	0	0	0	0	0	0	0	13
5-Jan	SWFB	0	0	227	0	0	0	0	0	0	0	0	0	0	0	0	0	0	0	0	0	0	0	227
5-Jan	PH1	17	0	0	0	3	0	0	0	0	0	0	0	0	0	0	0	0	0	0	0	0	0	20
5-Jan	PH2	0	0	0	0	0	0	0	0	0	0	0	0	0	0	0	0	0	0	0	0	0	0	0
5-Jan	PH3	0	0	0	0	0	0	0	0	0	0	0	0	0	0	0	0	0	0	0	0	0	0	0
5-Jan	SW1	0	0	0	0	0	0	0	0	0	0	0	0	0	0	0	0	0	0	0	0	0	0	0
5-Jan	SW2	0	0	0	0	0	0	43	0	0	0	0	0	0	0	0	0	0	0	0	0	0	0	43
5-Jan	SW3	0	0	0	0	0	0	0	0	0	0	0	0	0	0	0	0	0	0	0	0	0	0	0
Avg/Survey		9		120		2		22		0		0		0		0		0		0		0		303
6-Jan	PHFB	0	0	17	0	0	0	3	0	0	0	0	0	0	0	0	0	0	0	0	0	0	0	20
6-Jan	SWFB	0	0	102	0	0	0	0	0	0	0	0	0	0	0	0	0	0	0	0	0	0	0	102
6-Jan	PH1	10	0	11	0	6	0	0	0	0	0	0	0	0	0	0	0	0	0	0	0	0	0	27
6-Jan	PH2	1	0	0	0	0	0	0	0	0	0	0	0	0	0	0	0	0	0	0	0	0	0	1
6-Jan	PH3	0	0	0	0	0	0	0	0	0	0	0	0	0	0	0	0	0	0	0	0	0	0	0
6-Jan	SW1	0	0	0	0	0	0	0	0	0	0	0	0	0	0	0	0	0	0	0	0	0	0	0
6-Jan	SW2	0	0	0	0	0	0	0	0	0	0	0	0	0	0	0	0	0	0	0	0	0	0	0
6-Jan	SW3	0	0	0	0	0	0	59	0	0	0	0	0	0	0	0	0	0	0	0	0	0	0	59
Avg/Survey		6		65		3		31		0		0		0		0		0		0		0		209

John Day Dam
Avian Zones



John Day Weekly Averages

	Temp:	Secchi:	Fallbacks
Sun	39	6.0	
Mon	39	6.0	
Tue	39	6.0	
Wed	39	6.0	
Thur	39	6.0	
Fri	39	6.0	
Sat	39	6.0	
AVG:	39	AVG: 6.0	AVG
			MAX 0
			MIN 0

	NE1	NE2	S.Ent	SE1	N.Ent	JBS Diff	Bay19
Sun	oos	oos	oos	oos	1.5	4.5	oos
Sun							
Mon	oos	oos	oos	oos	1.4	4.5	oos
Mon							
Tues	oos	oos	oos	oos	no insp.	no insp.	oos
Tues							
Wed	oos	oos	oos	oos	1.6	4.5	oos
Wed							
Thur	oos	oos	oos	oos	1.4	4.5	oos
Thur							
Fri	oos	oos	oos	oos	1.5	4.0	oos
Fri							
Sat	oos	oos	oos	oos	1.5	4.4	oos
Sat							
AVG:	#DIV/0!	#DIV/0!	#DIV/0!	#DIV/0!	1.5	4.4	#DIV/0!