

FISHWAY STATUS REPORT

Date: 11/16/2013
Inspection Period: 11/10 thru 11/16/13

All JD Fishways are inspected twice per day during walk throughs;
 frequent monitoring of the PLC displays in SMF Fisheries Office as necessary.

	JOHN DAY DAM	
	JD/WC Project-Fisheries P.O. Box 823 Rufus, Oregon 97050 Phone: 541-506-7860	

John Day Dam	Inspections	Criteria	Total Number of Inspections: 14	Temperature: 53.3 F
	Out of Criteria	Limit		Secchi: 5.1 Ft.
NORTH FISHWAY			Three AWS pumps operational, three others OOS as of 11/1/13	
Exit differential	0	≤ 0.5'		
Exit Control weirs	0	High setting	High setting is normal for JDN	
Count station differential	0	≤ 0.3'		
Weir crest depth	0	1.0' ± 0.1'		
Entrance differential	0	1.0' - 2.0'	AVG 1.5	
SOUTH FISHWAY			In regular service with all three AWS turbines working properly	
Exit differential	0	≤ 0.5'		
Exit Control weirs	0	MID setting	MID is normal for JDS; changed back from temporary High on 11/16.	
Count station differential	0	≤ 0.3'		
Weir crest depth	0	1.0' ± 0.1'		
South entrance differential	0	1.0' - 2.0'	AVG 1.4	
Entrance weir SE1	0	depth (≥ 8')	AVG 9.3	
Collection channel velocity	0	1.5 - 4 fps	AVG 3.21	
Bay 1 differential	0	1.0' - 2.0'	AVG 1.8	
N. Entrance PH(Bay 19)differential	0	1.0' - 2.0'	AVG 1.4	
Entrance weir NE1	0	depth (≥ 8')	AVG 8.8	
Entrance weir NE2	0	depth (≥ 8')	AVG 8.9	
JUVENILE PASSAGE			SMF sampling season ended on 9/15, full flow PIT tags detections through 25 November	
Forebay/bypass conduit differential	0	4.0' - 5.0'	AVG 4.6	
Submersible traveling screens	0	visual inspect		
Turbine trashrack drawdown	0	<1.5', wkly	Some river debris (minor amount) showed up in the PH forebay and MU 1 gatewells this past week.	
Vert barrier screen drawdown	0	<1.5', wkly		
Spill volume	0	Bay 2 only	Spill for fish passage ended on 9/1, TSWs removed /stored on deck.	
Spill pattern	0	Bay 2 only	Bay 2 at 1.5 K for additional attraction to JD North entrance, during daylight hours	
Turbine Unit Priority	0	per FPP	MU priority without TSWs requires only units 1-4 in service	
Turbine 1% Efficiency	0	per FPP		

SMOLT MONITORING FACILITY

Operation: Sampling season ended on 9/15; SMF will continue in bypass for the full flow PIT tags detections until 25 November.

JD Fisheries crew coverage/ monitoring is 16 hrs/7 days since 9/15.

PDS screen rake continues in regular service without any issues.

Debris: Very light

Maintenance:

SMF building / wet lab OOS and winterized by JD Fisheries.

JD Fisheries Team continues preparing for the end of season dewatering of entire SMF on 25 November.

SMF CCTV replacement is in planning stage; on hold due to lack of funding. Likely implementation in FY 2014 :)

Research: None. No fish collections in 2013

Fallbacks: AVG: 0 MAX: 0 MIN: 0

OTHER ISSUES:**JOHN DAY**

Birds: See Avian tabs.

123 avian lines are properly installed. Two lines are currently missing; spillway/TSW line broke on 4/12/13. JD Management preparing a plan for the missing lines' replacement before 2014 passage season.

Operations:

JD North Fishway in service, meeting the FPP optimal criteria with 3 out of 6 AWS pumps operational; #1, 2 & 4 OOS due to continuing technical issues.

JD South Fishway in service, meeting the optimal FPP criteria with all three AWS turbines.

JD Spillway has only bay 2 open at 1.5K, during daylight hours only since 9/1. This is providing additional adult attraction to JD North entrance.

Maintenance:

JD North entrance TW sensor failed on 11/1, but the AWS pumps have been operating in manual mode so no real impact. The failed sensor was re-calibrated by JD Electrical on 11/4, Monday. Messer Schlenker and Brackin, District's engineers verified the JDN entrance's sensors again on 11/06 and they have been working well since.

Monthly (October) STS inspection by JD Structural crew completed on 10/23; only one screen had mesh issues and was replaced with working spare.

Gatewell draw down: Measurements made on 11/13. All units were within established limits, with less than 1.0' differential

Calibration: 11/14/2013 All JD Fishways' PLCs/ water level sensors were within 0.3' margin of error.

Research:

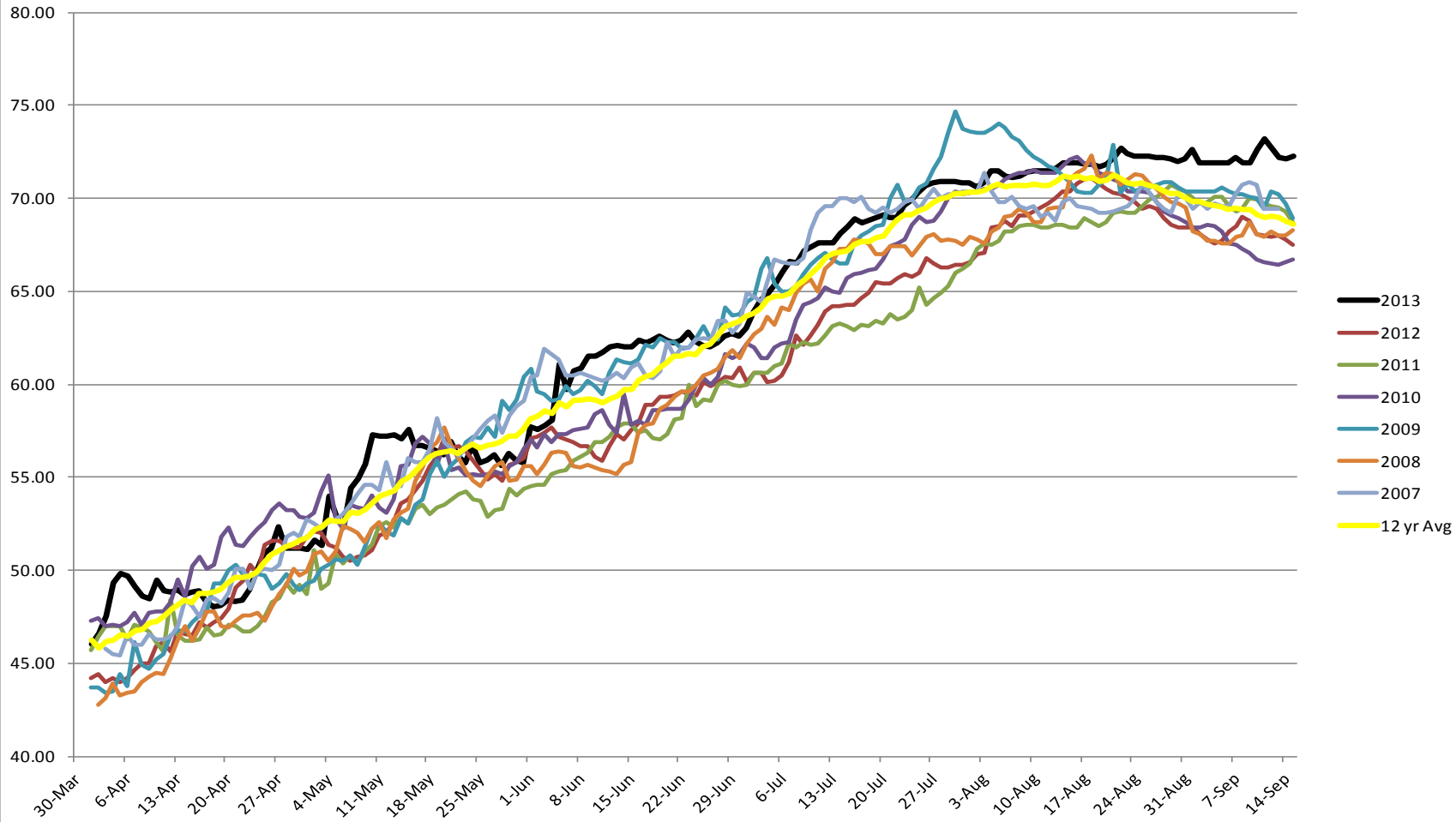
Fish counting at both JD Fishways ended 10/31 as required by FPP. Video counting began 11/1 and will continue through the winter.

Adult Salmonids Radio telemetry evaluations are ongoing at both JD adult fishway. University of Idaho crew is in charge of detecting of all adult adult salmonids, which were first tagged at Bonneville Dam.

Glen A. Smith PE
OPM John Day/Willow Creek Project

Date: ___ 18-Nov-13

2007-2013 Water Temps JDA w/ 12yr avg



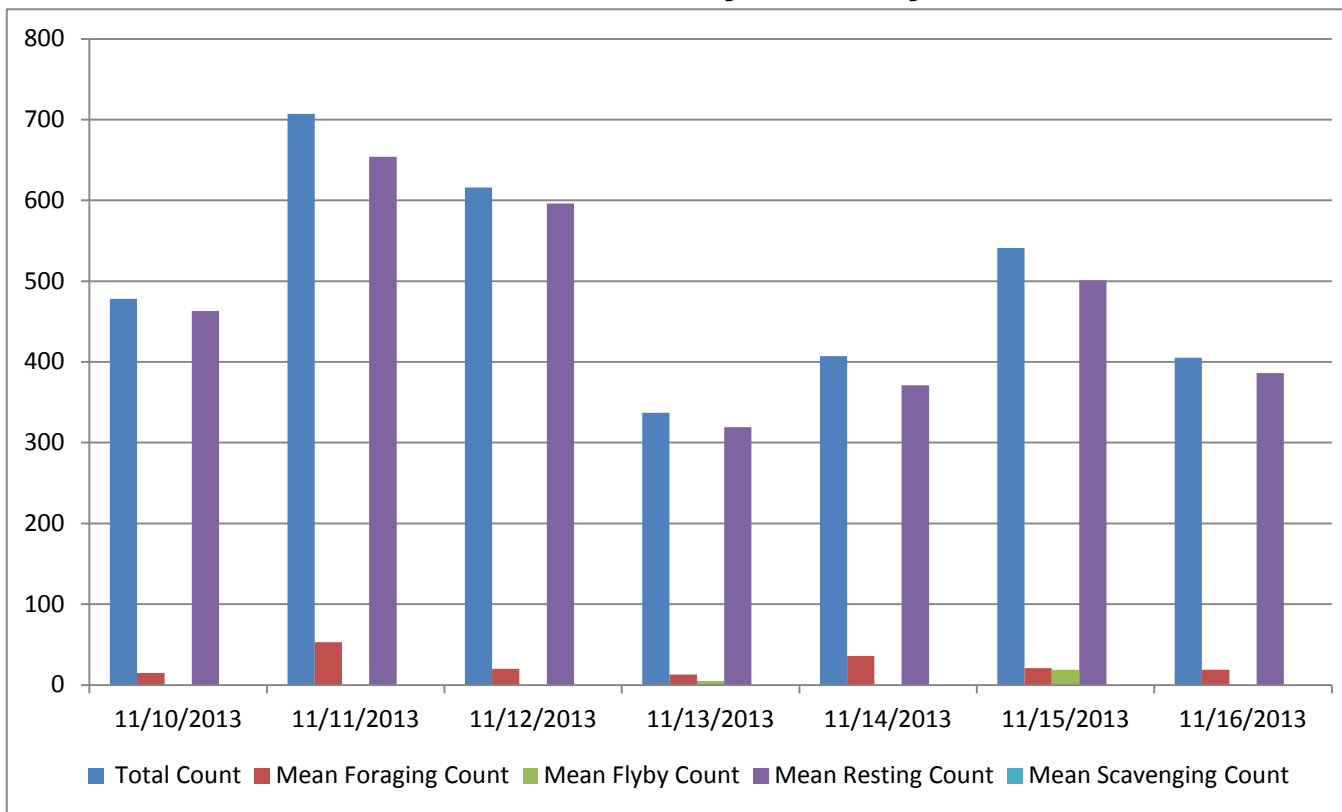
JDA COLLECTION CHANNEL VELOCITY

Date nov. 10
By: pkp,dek

Bay(s)	Time	Sec.	Velocity (f/s)
0-2	0:01:33	93	1.94
2 - 4	0:02:24	144	3.53
4 - 6	0:03:23	203	3.05
6 - 8	0:04:16	256	3.40
8 - 10	0:05:11	311	3.27
10 - 12	0:06:07	367	3.21
12 - 14	0:07:11	431	2.81
14 - 16	0:08:07	487	3.21
16 - 18	0:08:47	527	4.50

3.21

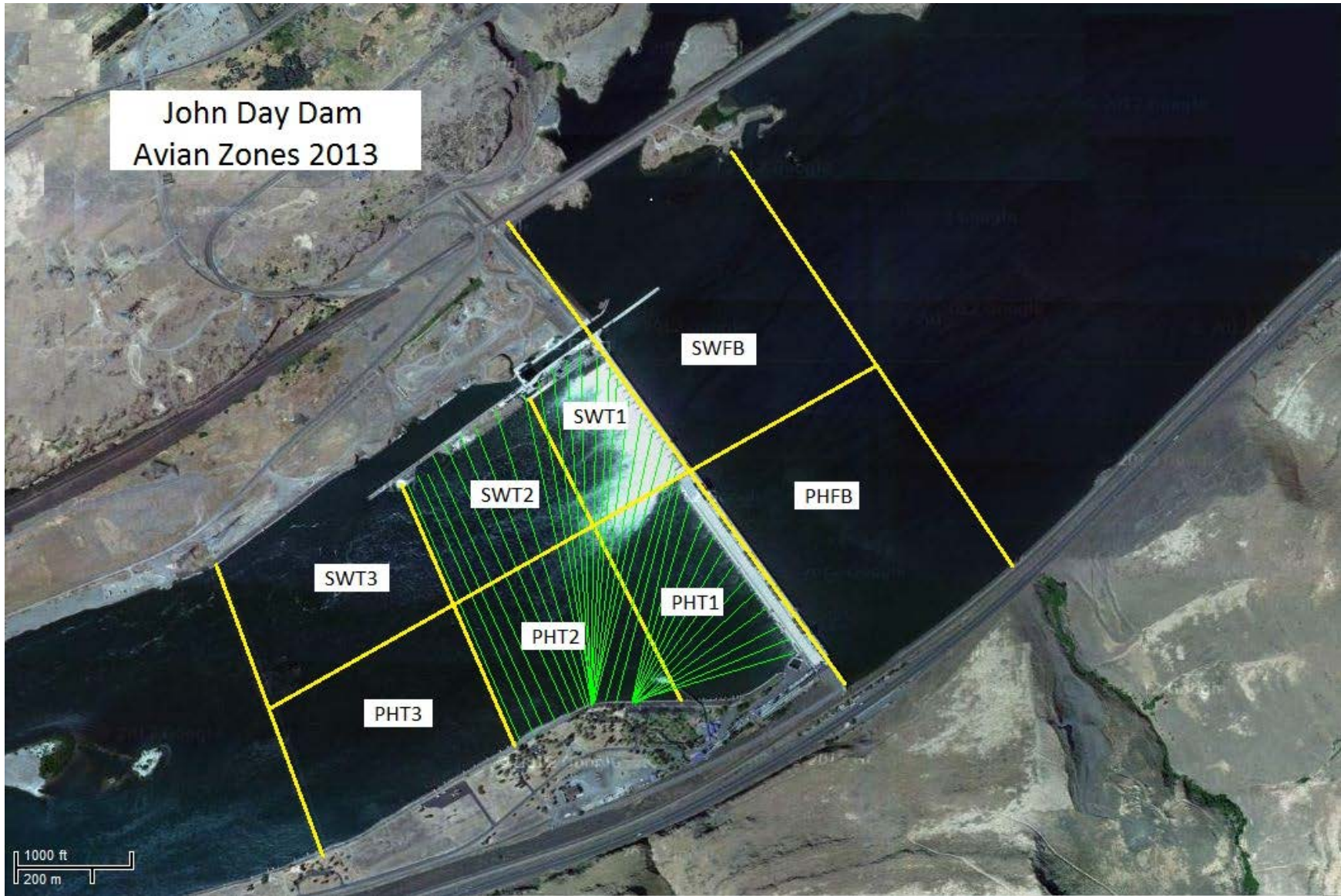
Bird Count by Activity



Date	Total Count	Mean Foraging Count	Mean Flyby Count	Mean Resting Count	Mean Scavenging Count
11/10/2013	478	15		463	
11/11/2013	707	53		654	
11/12/2013	616	20		596	
11/13/2013	337	13	5	319	
11/14/2013	407	36		371	
11/15/2013	541	21	19	501	
11/16/2013	405	19		386	

**Seasonal High numbers of GULLS
in the Forebay and on the WING WALL.**

John Day Dam
Avian Zones 2013



John Day:

	Temp:	Secchi:	Fallbacks
Sun	54	5.0	
Mon	54	5.0	
Tues	54	5.0	
Wed	54	5.0	
Thur	52	5.5	
Fri	52	5.5	
Sat	53	5.0	
AVG:	53.3	5.1	AVG
			MAX
			MIN

	NE1	NE2	S.Ent	SE1	N.Ent	JBS Diff	Bay1	Bay19
Sun	8.7	8.9	1.5	9.8	1.5	4.6	1.8	1.6
Sun	9.4	9.6	1.4	10.1	1.4	4.6	1.9	1.4
Mon	9.2	9.4	1.5	9.6	1.6	4.6	1.8	1.5
Mon	9.0	9.1	1.5	9.3	1.4	4.6	1.9	1.5
Tues	9.0	9.2	1.0	9.6	1.5	4.7	1.6	1.6
Tues	8.3	8.4	1.2	9.8	1.5	4.6	1.5	1.5
Wed	8.6	8.6	1.3	9.7	1.5	4.6	1.7	1.5
Wed	9.6	9.6	1.4	10.1	1.5	4.6	1.8	1.4
Thur	9.5	9.6	1.3	9.5	1.5	4.7	1.7	1.5
Thur	9.1	9.2	1.3	10.5	1.7	4.6	1.7	1.5
Fri	8.1	8.1	1.6	8.1	1.6	4.5	2.0	1.4
Fri	8.0	8.0	1.5	8.0	1.6	4.6	1.9	1.2
Sat	8.7	8.7	1.4	8.6	1.5	4.6	1.7	1.2
Sat	8.2	8.1	1.4	8.1	1.7	4.5	1.8	1.2
AVG:	8.8	8.9	1.4	9.3	1.5	4.6	1.8	1.4