


FISHWAY STATUS REPORT

Date: 10/26/2013
Inspection Period: 10/20 thru 10/26/2013

All JD Fishways are inspected twice per day during walk throughs;
 frequent monitoring of the PLC displays in SMF Fisheries Office as necessary.



JOHN DAY DAM

JD/WC Project-Fisheries
 P.O. Box 823
 Rufus, Oregon 97050
 Phone: 541-506-7860

John Day Dam	Inspections	Criteria	Total Number of Inspections:	Temperature:
	Out of Criteria	Limit	14	58.1 F
NORTH FISHWAY			Four AWS pumps operational, two others OOS.	
Exit differential	0	≤ 0.5'		
Exit Control weirs	0	High setting	High setting is normal for JDN	
Count station differential	0	≤ 0.3'		
Weir crest depth	0	1.0' ± 0.1'		
Entrance differential	0	1.0' - 2.0'	AVG 1.4	
SOUTH FISHWAY			In regular service with all three AWS turbines working properly	
Exit differential	0	≤ 0.5'		
Exit Control weirs	0	Mid setting	Mid setting is normal for JDS	
Count station differential	0	≤ 0.3'		
Weir crest depth	0	1.0' ± 0.1'		
South entrance differential	0	1.0' - 2.0'	AVG 1.4	
Entrance weir SE1	1	depth (≥ 8')	AVG 8.7	7.6' depth due to PLC glitch on 10/24, corrected immediately
Collection channel velocity	0	1.5 - 4 fps	2.95 fps	
Bay 1 differential	0	1.0' - 2.0'	AVG 1.8	
N. Entrance PH(Bay 19)differential	0	1.0' - 2.0'	AVG 1.2	
Entrance weir NE1	1	depth (≥ 8')	AVG 8.4	7.8' depth due to PLC glitch on 10/24, corrected immediately
Entrance weir NE2	1	depth (≥ 8')	AVG 8.4	7.9 depth due to PLC glitch on 10/24, corrected immediately
JUVENILE PASSAGE			SMF sampling season ended on 9/15, full flow PIT tags detections through 25 November	
Forebay/bypass conduit differential	0	4.0' - 5.0'	AVG 4.6	
Submersible traveling screens	0	visual inspect		
Turbine trashrack drawdown	0	<1.5', wkly	Very low river debris loads and low drawdown measurements	
Vert barrier screen drawdown	0	<1.5', wkly		
Spill volume	0	Bay 2 only	Spill for fish passage ended on 9/1, TSWs removed /stored on deck.	
Spill pattern	0	Bay 2 only	Bay 2 at 1.5 K for additional attraction to JD North entrance, during daylight hours	
Turbine Unit Priority	0	per FPP	MU priority without TSWs requires only units 1-4 in service	
Turbine 1% Efficiency	0	per FPP		

SMOLT MONITORING FACILITY

Operation: Sampling season ended on 9/15; SMF will continue in bypass for the full flow PIT tags detections until 25 November.

JD Fisheries crew coverage/ monitoring is 16 hrs/7 days since 9/15.

PDS screen rake continues in regular service without any issues.

Debris: Very light

Maintenance:

SMF building / wet lab OOS and winterized by JD Fisheries. Kudos to Mr. Greg Kovalchuk, JD PSMFC Sampling Biologist for his significant assistance and cleanup work !

SMF CCTV replacement is in planning stage ; on hold due to lack of funding. Likely implementation in FY 2014 :)

Research: None. No fish collections in 2013

Fallbacks: AVG: 0 MAX: 0 MIN: 0

OTHER ISSUES:

JOHN DAY

Birds: See Avian tabs.

123 avian lines are properly installed. Two lines are currently missing; spillway/TSW line broke on 4/12/13. JD Management preparing a plan for the missing lines' replacement before 2014 passage season.

Operations:

JD North Fishway in service, meeting the FPP optimal criteria with 3 out of 4 AWS pumps operational; # 2 & 4 OOS due to continuing technical issues.

JD South Fishway in service, meeting the optimal FPP criteria with all three AWS turbines'.

JD Spillway has only bay 2 open at 1.5K, during daylight hours only since 9/1. This is providing additional attraction to JD North entrance.

Maintenance:

JD Fishways Control PLC experienced minor glitches after the SS switching on 10/24. JD Electrical reset the server on 10/28 and PLC is OK again.

Monthly (October) STS inspection by JD Structural crew completed on 10/23; only one screen had mesh issues and was replaced with working spare.

Gatewell draw down: Measurements made on 10/14. All units were within established limits.

Calibration: 10/19/2013 All JD Fishways' PLCs/ water level sensors were within 0.3' margin of error.

Research:

WDFW dam angling ongoing; total annual catch ending 10/6 is 2,365 fish. Fishing is expected to end soon.

Fish counting at both JD Fishways ongoing through 10/31 as required by FPP. Video counting will be preformed this winter, November - February.

Adult Salmonids Radio telemetry evaluations are ongoing at both JD adult fishway. University of Idaho crew is in charge of detecting of all adult adult salmonids, which were first tagged at Bonneville Dam.

Glen A. Smith PE

OPM John Day/Willow Creek Project

Date: ___ 27-Aug-13

2007-2013 Water Temps JDA w/ 12yr avg



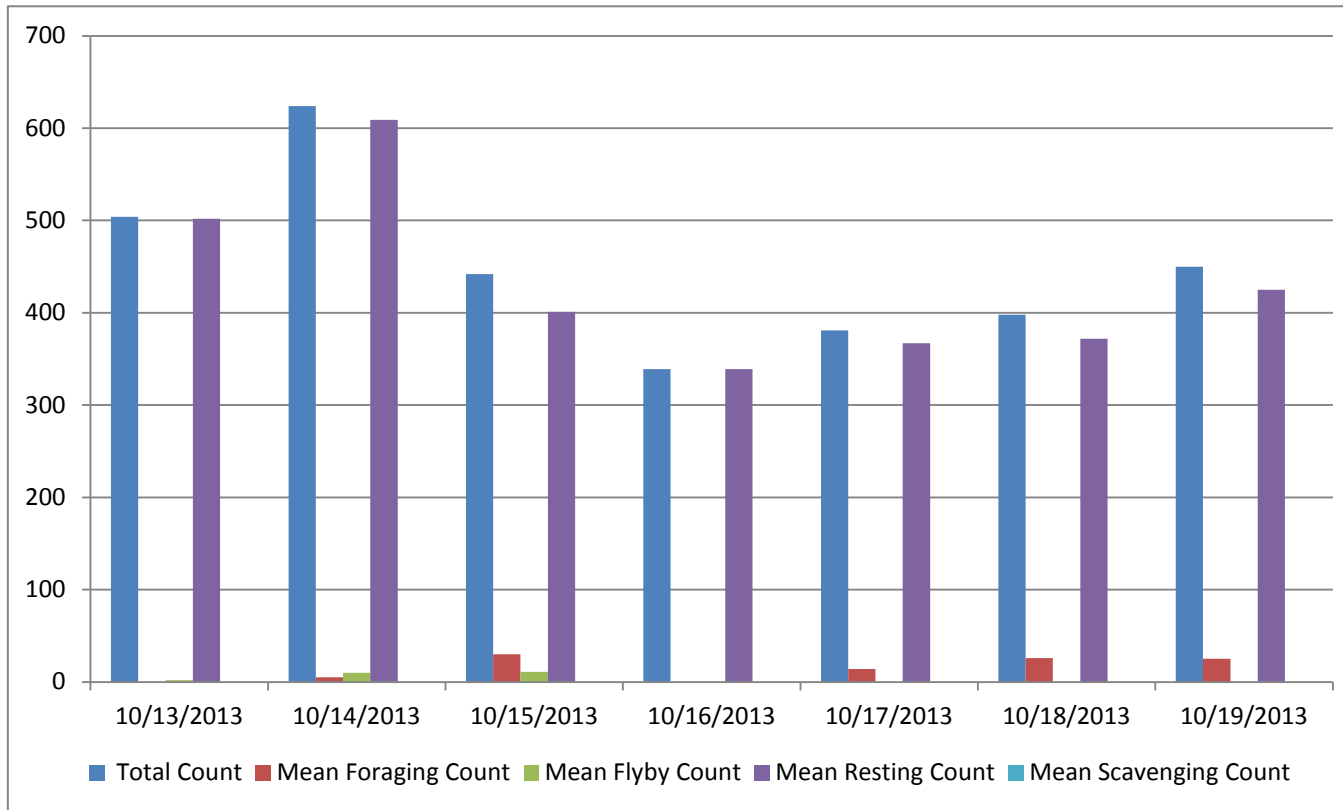
JDA COLLECTION CHANNEL VELOCITY

Date 27-Oct-13
By: egg, pkr

Bay(s)	Time	Sec.	Velocity (f/s)
0-2	0:01:30	90	2.00
2 - 4	0:02:30	150	3.00
4 - 6	0:03:30	210	3.00
6 - 8	0:04:30	270	3.00
8 - 10	0:05:30	330	3.00
10 - 12	0:06:32	392	2.90
12 - 14	0:07:38	458	2.73
14 - 16	0:08:41	521	2.86
16 - 18	0:09:25	565	4.09

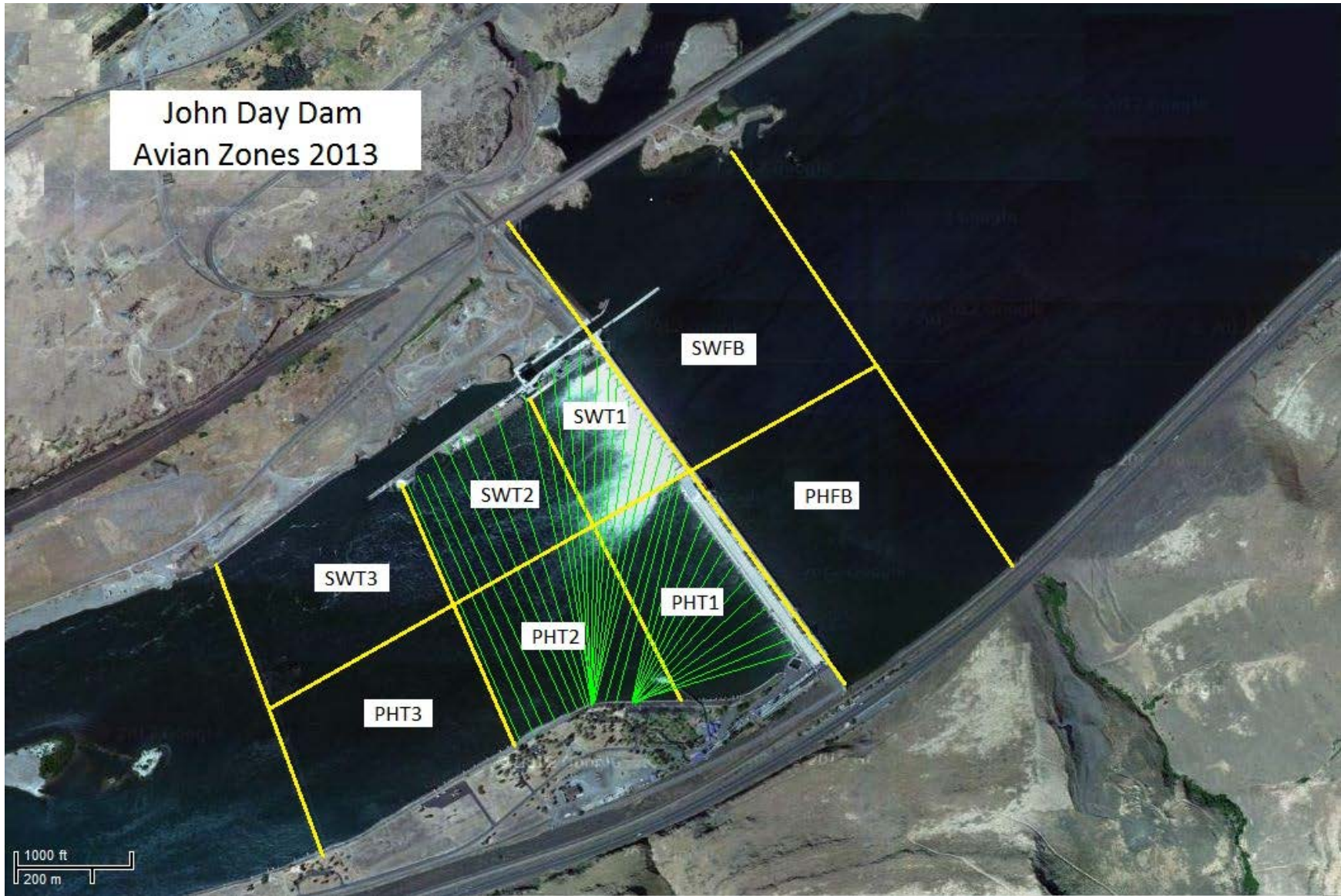
2.95

Bird Count by Activity



Date	Total Count	Mean Foraging Count	Mean Flyby Count	Mean Resting Count	Mean Scavenging Count
10/13/2013	504	0	2	502	0
10/14/2013	624	5	10	609	0
10/15/2013	442	30	11	401	0
10/16/2013	339	0	0	339	0
10/17/2013	381	14	0	367	0
10/18/2013	398	26	0	372	0
10/19/2013	450	25	0	425	0

John Day Dam
Avian Zones 2013



John Day:

	Temp:	Secchi:	Fallbacks
Sun	59	5.0	
Mon	59	5.0	
Tues	59	5.0	
Wed	58	5.0	
Thur	58	5.0	
Fri	57	5.0	
Sat	57	5.0	
AVG:	58.1	5.0	AVG
			MAX
			MIN

	NE1	NE2	S.Ent	SE1	N.Ent	JBS Diff	Bay1	Bay19
Sun	8.3	8.3	1.5	8.3	1.4	4.5	1.8	1.1
Sun	8.0	8.0	1.5	8.6	1.5	4.5	1.9	1.1
Mon	8.9	8.9	1.4	8.9	1.2	4.4	1.7	1.0
Mon	8.5	8.5	1.3	8.6	1.4	4.6	1.7	1.1
Tues	8.5	8.6	1.5	8.5	1.3	4.6	1.8	1.1
Tues	8.1	8.1	1.4	8.1	1.5	4.6	1.8	1.0
Wed	9.3	9.4	1.3	9.4	1.3	4.6	1.6	1.2
Wed	8.1	8.2	1.4	8.4	1.3	4.6	1.7	1.2
Thur	8.3	8.4	1.4	8.3	1.4	4.6	1.9	1.4
Thur	7.8	7.9	1.3	7.6	1.4	4.6	2.2	1.3
Fri	8.5	8.2	1.4	9.1	1.5	4.6	1.9	1.4
Fri	8.6	8.4	1.3	9.4	1.4	4.6	1.6	1.1
Sat	8.3	8.2	1.3	9.3	1.3	4.6	1.9	1.5
Sat	8.2	8.3	1.2	9.8	1.3	4.6	1.5	1.2
AVG:	8.4	8.4	1.4	8.7	1.4	4.6	1.8	1.2