

FISHWAY STATUS REPORT

Date: 10/12/2013
Inspection Period: 10/6 thru 10/12/13

All JD Fishways are inspected twice per day during walk throughs;
 frequent monitoring of the PLC displays in SMF Fisheries Office as necessary.

	JOHN DAY DAM	
	JD/WC Project-Fisheries P.O. Box 823 Rufus, Oregon 97050 Phone: 541-506-7860	

John Day Dam	Inspections	Criteria	Total Number of Inspections: 14	Temperature: 61.9 F
	Out of Criteria	Limit		Secchi: 5.0 Ft.
NORTH FISHWAY			Four AWS pumps operational, two others OOS.	
Exit differential	0	≤ 0.5'		
Exit Control weirs	0	High setting	High setting is normal for JDN	
Count station differential	0	≤ 0.3'		
Weir crest depth	0	1.0' ± 0.1'		
Entrance differential	0	1.0' - 2.0'	AVG 1.5	
SOUTH FISHWAY			In regular service with all three AWS turbines working properly since 10/8	
Exit differential	0	≤ 0.5'		
Exit Control weirs	0	Mid setting	Mid setting is normal for JDS	
Count station differential	0	≤ 0.3'		
Weir crest depth	0	1.0' ± 0.1'		
South entrance differential	0	1.0' - 2.0'	AVG 1.3	
Entrance weir SE1	0	depth (≥ 8')	AVG 8.9	
Collection channel velocity	0	1.5 - 4 fps	2.99 fps #REF!	
Bay 1 differential	0	1.0' - 2.0'	AVG 1.8	
N. Entrance PH(Bay 19)differential	0	1.0' - 2.0'	AVG 1.3	
Entrance weir NE1	0	depth (≥ 8')	AVG 8.2	
Entrance weir NE2	0	depth (≥ 8')	AVG 8.2	
JUVENILE PASSAGE			SMF sampling season ended on 9/15, full flow PIT tags detections through 26 Nov.	
Forebay/bypass conduit differential	0	4.0' - 5.0'	AVG 4.6	
Submersible traveling screens	0	visual inspect		
Turbine trashrack drawdown	0	<1.5', wkly	Very low river debris loads and low drawdown measurements	
Vert barrier screen drawdown	0	<1.5', wkly		
Spill volume	0	Bay 2 only	Spill for fish passage ended on 9/1, TSWs OOS.	
Spill pattern	0	Bay 2 only	Bay 2 for additional attraction to JD North entrance	
Turbine Unit Priority	0	per FPP	MU priority without TSWs requires only units 1-4 in service	
Turbine 1% Efficiency	0	per FPP		

SMOLT MONITORING FACILITY

Operation: Sampling season ended on 9/15; SMF will continue in bypass for the full flow PIT tags detections until 26 November.

JD Fisheries crew coverage/ monitoring is 18 hrs/7 days since 9/15.

PDS screen rake continues in regular service without any issues.

Debris: Very light

Maintenance:

SMF building / wet lab OOS and in the process of winterization by JD Fisheries. Kudos to Mr. Greg Kovalchuk, JD PSMFC Sampling Biologist for his significant assistance and cleanup work !

SMF CCTV replacement is in planning stage ; on hold due to lack of funding. Likely implementation in FY 2014 :)

Research: None. No fish collections in 2013

Fallbacks: AVG: 0 MAX: 0 MIN: 0

OTHER ISSUES:

JOHN DAY

Birds: See Avian tabs.

123 avian lines are properly installed. Two lines are currently missing; spillway/TSW line broke on 4/12/13. JD Management preparing a plan for the missing lines' replacement before 2014 passage season.

Operations:

JD North Fishway in service, meeting the FPP optimal criteria with 3 out of 4 AWS pumps operational; # 2 & 4 OOS due to continuing technical issues.

JD South Fishway AWS turbine # 1 returned to regular service on 10/8 AM after an extensive troubleshooting of its controls & annunciation.

Kudos to Eddie Schlaht, JD mechanic who was instrumental in proper identification/ fixing of a troublesome RTD !

District ROV crew successfully performed an underwater inspection of all open JD South diffuser gratings on 10/9, 1900 to 2200 hrs.

All grating segments were found in place and properly attached. Kudos to Messers Benoit and Manny for their excellent ROV skills and service !

JD Spillway has only bay 2 open at 1.5K, during daylight hours only since 9/1. This is providing additional attraction to JD North entrance.

Maintenance:

Monthly (September) STS inspection by JD Structural crew was completed by 10/3. All operating screens were found in good working condition.

Gatewell draw down: Measurements made on 9/29. All units were within established limits.

Calibration: 10/5/2013 All JD Fishways' PLCs/ water level sensors were within 0.3' margin of error.

Research:

WDFW dam angling ongoing ; total annual catch ending 10/6 is 2,365 fish. Fishing is expected to end soon.

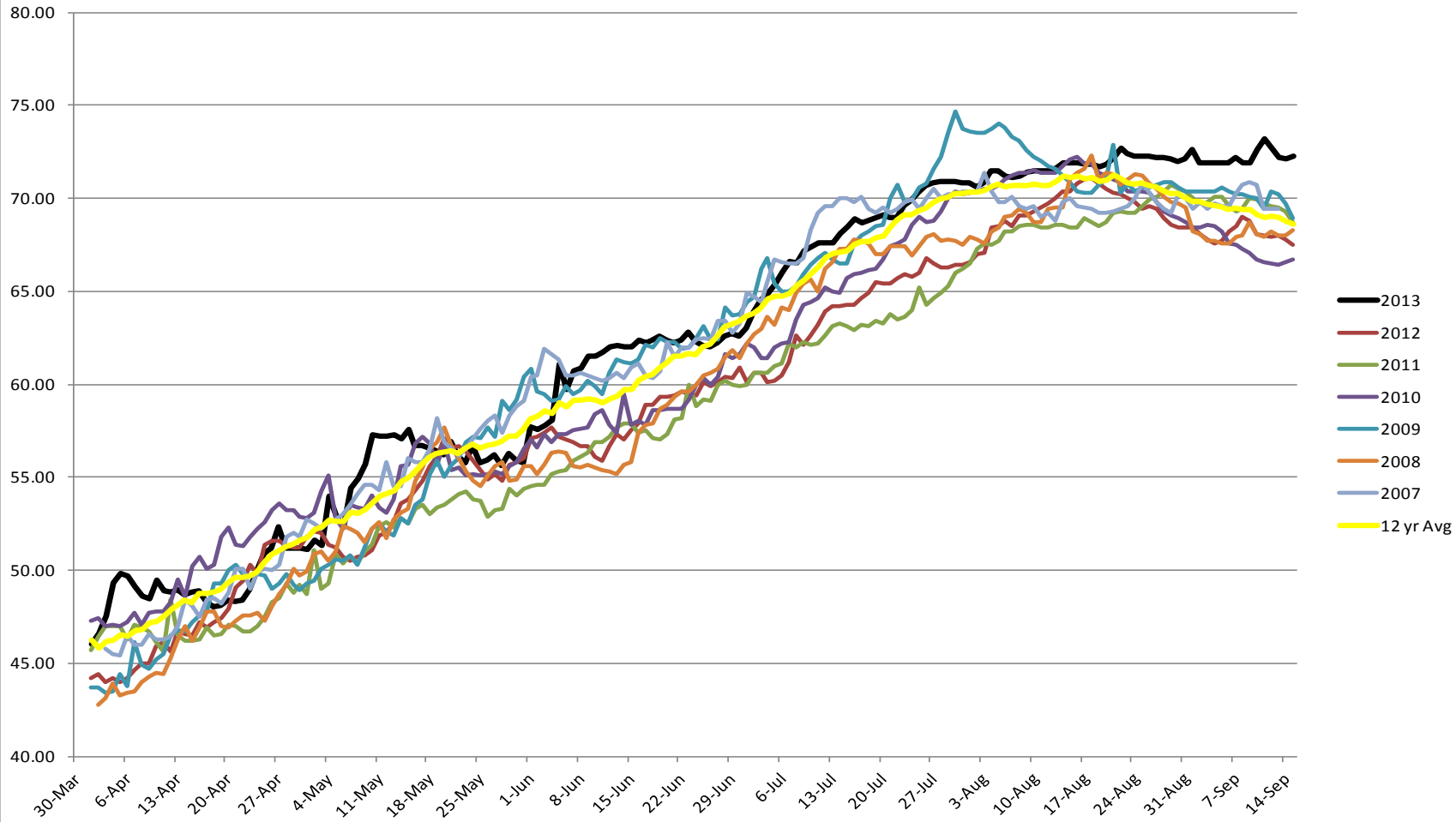
Fish counting at both JD Fishways ongoing as required by FPP.

Adult Salmonids Radio telemetry evaluations are ongoing at both JD adult fishway. University of Idaho crew is in charge of detecting of all adult adult salmonids, which were first tagged at Bonneville Dam.

Glen A. Smith PE
OPM John Day/Willow Creek Project

Date: ___ 27-Aug-13

2007-2013 Water Temps JDA w/ 12yr avg



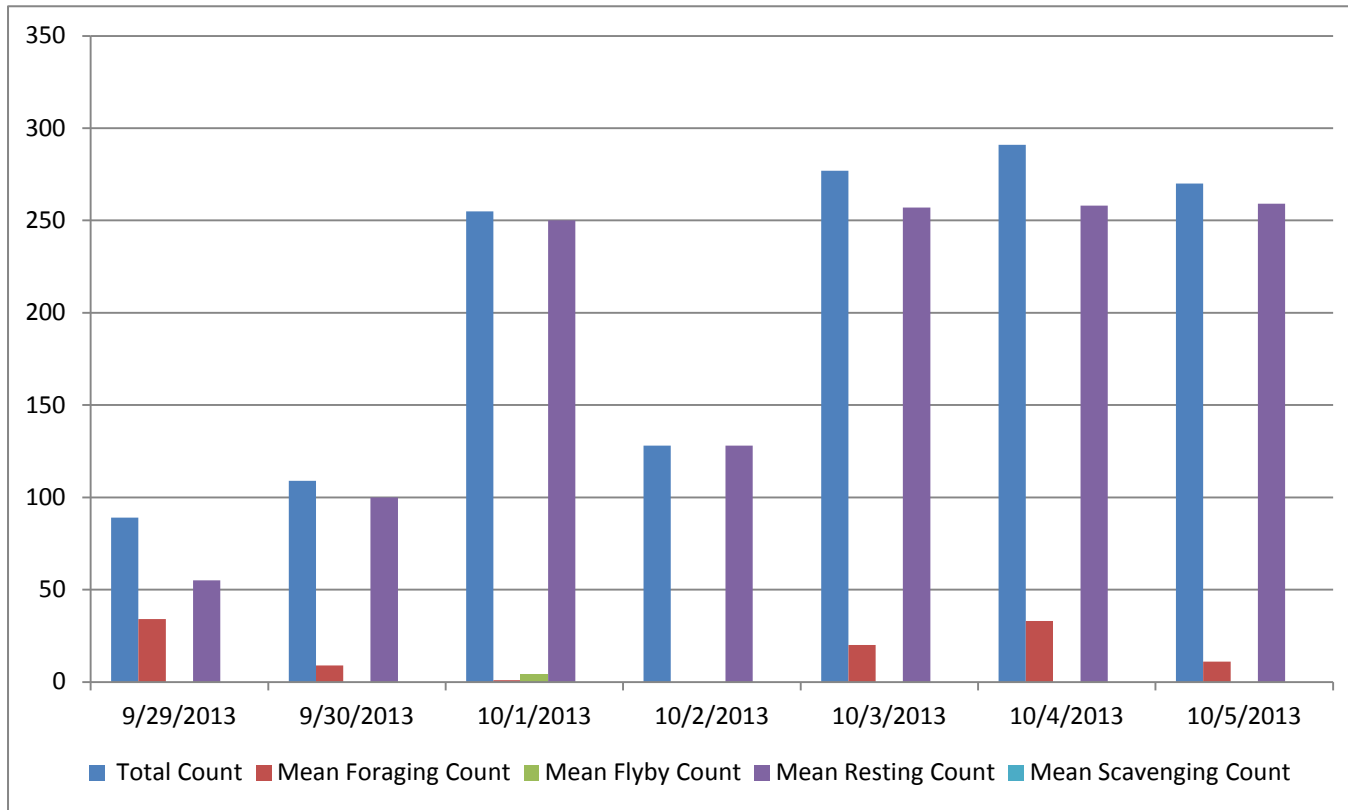
JDA COLLECTION CHANNEL VELOCITY

Date 10-Oct-13
By: pete/eric

Bay(s)	Time	Sec.	Velocity (f/s)
0-2	0:01:29	89	2.02
2 - 4	0:02:29	149	3.00
4 - 6	0:03:29	209	3.00
6 - 8	0:04:33	273	2.81
8 - 10	0:05:35	335	2.90
10 - 12	0:06:36	396	2.95
12 - 14	0:07:36	456	3.00
14 - 16	0:08:37	517	2.95
16 - 18	0:09:19	559	4.29

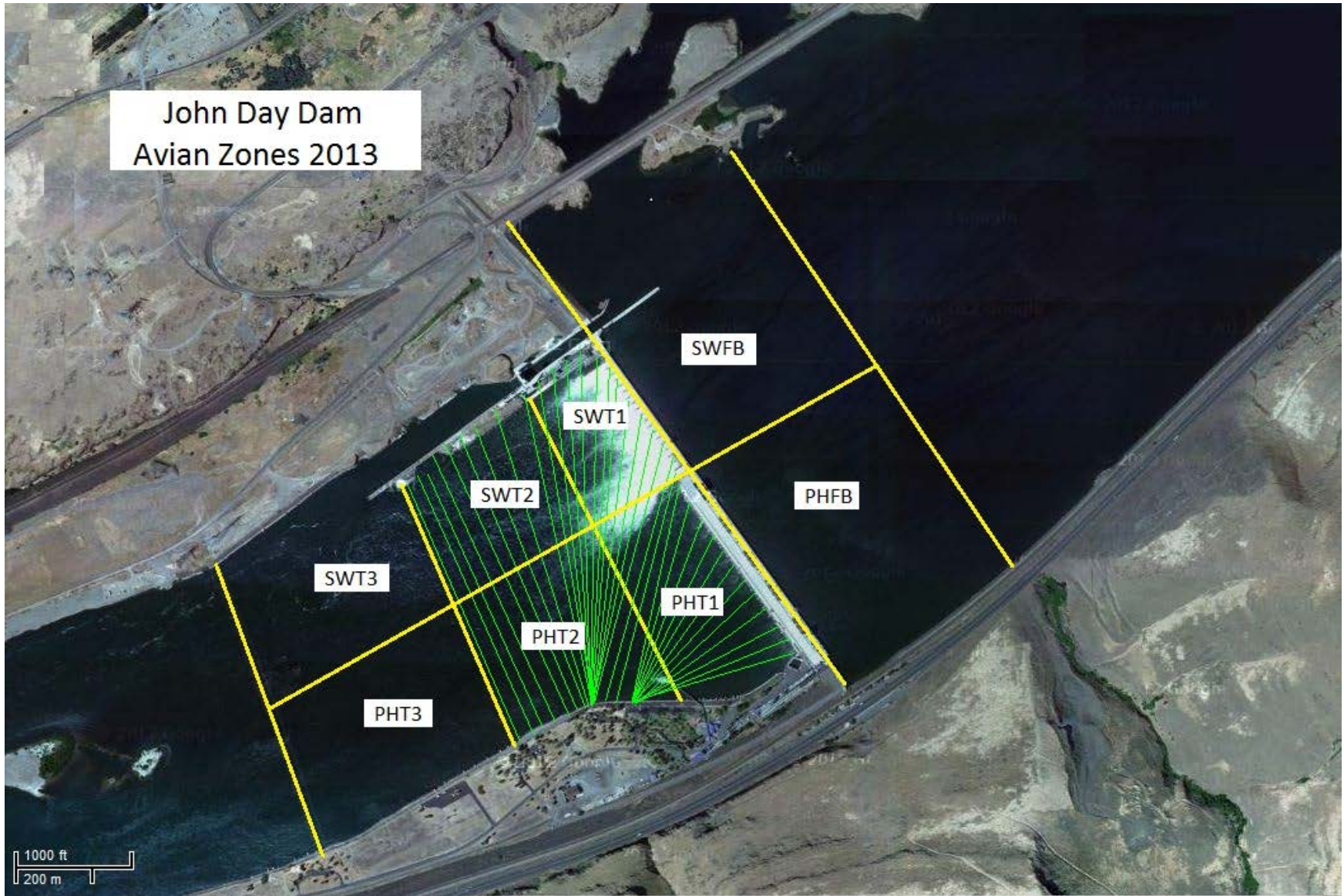
2.99

Bird Count by Activity



Date	Total Count	Mean Foraging Count	Mean Flyby Count	Mean Resting Count	Mean Scavenging Count
9/29/2013	89	34	0	55	0
9/30/2013	109	9	0	100	0
10/1/2013	255	1	4	250	0
10/2/2013	128	0	0	128	0
10/3/2013	277	20	0	257	0
10/4/2013	291	33	0	258	0
10/5/2013	270	11	0	259	0

John Day Dam
Avian Zones 2013



John Day:

	Temp:	Secchi:	Fallbacks
Sun	63	5.0	
Mon	63	5.0	
Tues	63	5.0	
Wed	62	5.0	
Thur	61	5.0	
Fri	60	5.0	
Sat	61	5.0	
AVG:	61.9	5.0	AVG
			MAX
			MIN

	NE1	NE2	S.Ent	SE1	N.Ent	JBS Diff	Bay1	Bay19
Sun	8.1	8.3	1.3	8.2	1.7	4.6	1.6	1.0
Sun	8.1	8.1	1.1	8.2	1.7	4.6	1.5	1.0
Mon	8.2	8.2	1.3	8.3	1.6	4.5	1.7	1.1
Mon	8.2	8.2	1.3	8.2	1.4	4.6	1.7	1.1
Tues	8.1	8.0	1.2	8.5	1.4	4.6	1.6	1.4
Tues	8.1	8.1	1.4	8.5	1.3	4.6	1.8	1.2
Wed	8.1	8.0	1.4	8.3	1.4	4.6	1.8	1.5
Wed	8.2	8.3	1.4	8.7	1.4	4.6	1.8	1.3
Thur	8.2	8.1	1.4	9.5	1.5	4.6	1.8	1.5
Thur	8.2	8.4	1.5	9.9	1.2	4.6	2.0	1.3
Fri	8.2	8.2	1.3	9.5	1.5	4.6	2.0	1.5
Fri	8.2	8.3	1.2	9.9	1.4	4.6	1.8	1.2
Sat	8.2	8.2	1.3	9.3	1.5	4.6	1.8	1.4
Sat	8.1	8.2	1.5	9.9	1.4	4.5	1.8	1.3
AVG:	8.2	8.2	1.3	8.9	1.5	4.6	1.8	1.3