


FISHWAY STATUS REPORT

Date: 9/28/2013
Inspection Period: 9/22 thru 9/28/2013

All JD Fishways are inspected twice per day during walk throughs;
 frequent monitoring of the PLC displays in SMF Fisheries Office as necessary.



JOHN DAY DAM

JD/WC Project-Fisheries
 P.O. Box 823
 Rufus, Oregon 97050
 Phone: 541-506-7860

John Day Dam	Inspections	Criteria	Total Number of Inspections:	14	Temperature:	68.9 F
	Out of Criteria	Limit			Secchi:	5.5 Ft.
NORTH FISHWAY			Four AWS pumps operational, two others OOS.			
Exit differential	0	≤ 0.5'				
Exit Control weirs	0	High setting	High setting is normal for JDN			
Count station differential	0	≤ 0.3'				
Weir crest depth	0	1.0' ± 0.1'				
Entrance differential	0	1.0' - 2.0'	AVG	1.4		
SOUTH FISHWAY			In regular service with all three AWS turbines working properly			
Exit differential	0	≤ 0.5'				
Exit Control weirs	0	Mid setting	Mid setting is normal for JDS			
Count station differential	0	≤ 0.3'				
Weir crest depth	0	1.0' ± 0.1'				
South entrance differential	0	1.0' - 2.0'	AVG	1.4		
Entrance weir SE1	0	depth (≥ 8')	AVG	9.1		
Collection channel velocity	0	1.5 - 4 fps	ft/sec	#REF!		
Bay 1 differential	0	1.0' - 2.0'	AVG	1.8		
N. Entrance PH(Bay 19)differential	1	1.0' - 2.0'	AVG	1.2	Due to AWS turbine 1 failure/OOS since 9/28, PM.	
Entrance weir NE1	0	depth (≥ 8')	AVG	8.4		
Entrance weir NE2	0	depth (≥ 8')	AVG	8.4		
JUVENILE PASSAGE			SMF sampling season ended on 9/15, full flow PIT tags detections through 27 Nov.			
Forebay/bypass conduit differential	0	4.0' - 5.0'	AVG	4.6		
Submersible traveling screens	0	visual inspect				
Turbine trashrack drawdown	0	<1.5', wkly	Very low river debris loads and low drawdown measurements			
Vert barrier screen drawdown	0	<1.5', wkly				
Spill volume	0	Bay 2 only	Spill for fish passage ended on 9/1, TSWs OOS.			
Spill pattern	0	Bay 2 only				
Turbine Unit Priority	0	per FPP	MU priority without TSWs requires only units 1-4 in service			
Turbine 1% Efficiency	0	per FPP				

SMOLT MONITORING FACILITY

Operation: Sampling season ended on 9/15; SMF will continue in bypass for the full flow PIT tags detections until 30 November.

JD Fisheries crew coverage/ monitoring is 18/7 since 9/15.

PDS screen rake continues in regular service without any issues.

Debris: Very light

Maintenance:

SMF CCTV replacement is in planning stage ; on hold due to lack of funding. Likely implementation in FY 2014 :)

Research: None. No fish collections in 2013

Fallbacks: AVG: 0 MAX: 0 MIN: 0

OTHER ISSUES:

JOHN DAY

Birds: See Avian tabs.

123 avian lines are properly installed. Two lines are currently missing; spillway/TSW line broke on 4/12/13. JD Management preparing a plan for the missing lines' replacement before 2014 passage season.

Gull hazing by USDA boat crew completed for 2013 season on 7/29. Very few gulls are observed around JD at this time of year.

Operations:

JD North Fishway in service, meeting the FPP optimal criteria with 2 out of 4 AWS pumps operational; # 2 & 4 OOS due to continuing technical issues.

JD South Fishway AWS turbine # 1 failed due to a bearing high temperature alarm on 9/28, 1700 hrs. Trouble shooting underway; it appears to be an electrical sensor problem as opposed to a more serious mechanical issue. JD South Fishway has been meeting the FPP criteria since 9/29 after the two remaining turbines' RPMs were increased.

JD Fisheries is planning for the ROV inspection of JD South collection channel's diffuser grating on 10/8, at night due to an unexplained event related to a sudden and significant increase of AWS internal pressure.

JD Spillway has only bay 2 open at 1.5K, during daylight hours only since 9/1. This is providing additional attraction to JD North entrance.

Maintenance:

Monthly STS inspection by JD Structural crew is scheduled for the week of 30 September.

Gatewell draw down: Measurements made on 9/08. All units were within established limits.

Calibration: 9/1/2013 All JD Fishways' PLCs/ water level sensors were within 0.3' margin of error.

Research:

WDFW dam angling ongoing ; weekly catch ending 8/25 was 2 NPM with 2,171 total since 5/1. Fishing is expected to continue through August.

Fish counting at both JD Fishways ongoing as required by FPP.

JD North Lamprey Passage System's (LPS) 2013 experimental operation completed on 9/9. U of I crew will return the next year.

Adult Salmonids Radio telemetry evaluations are ongoing at both JD adult fishway. University of Idaho crew is in charge of detecting of all adult adult salmonids, which were first tagged at Bonneville Dam.

2007-2013 Water Temps JDA w/ 12yr avg



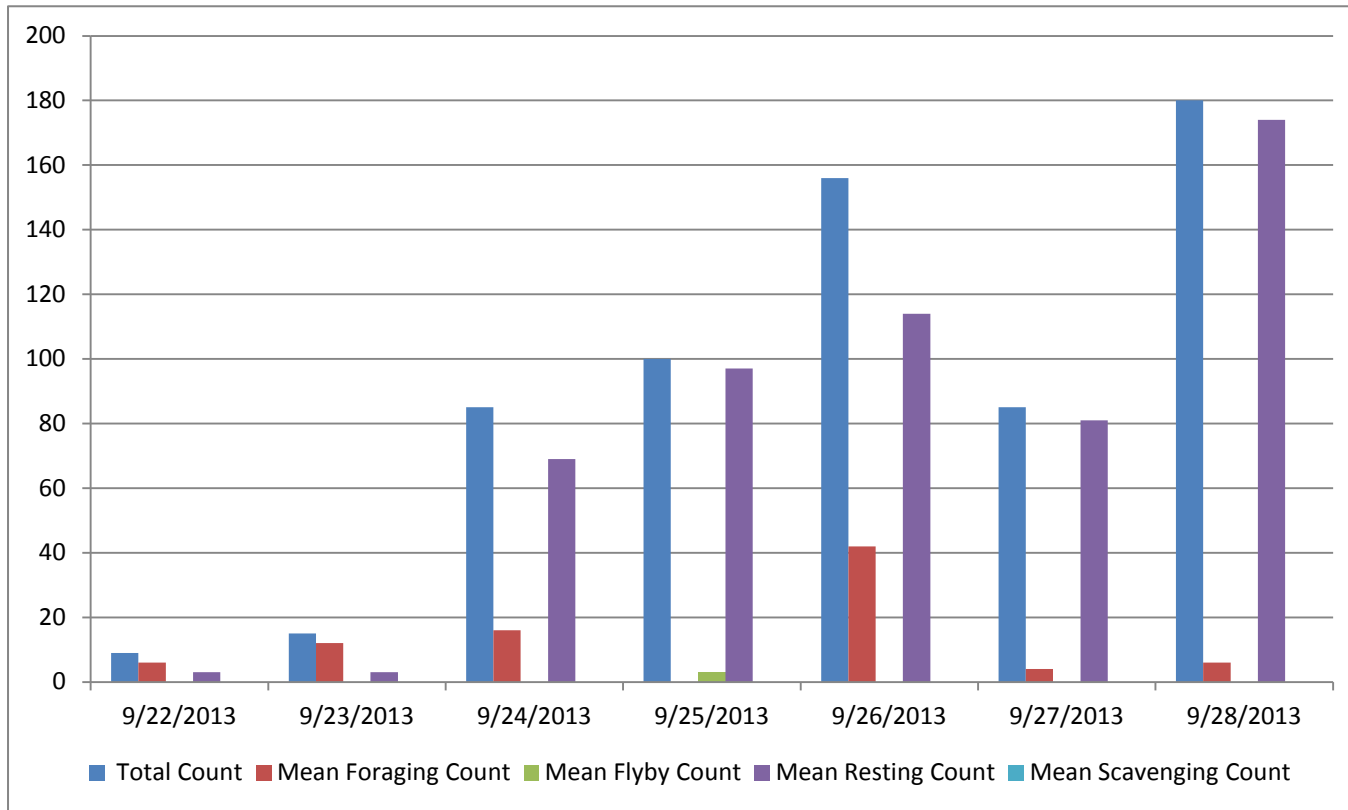
JDA COLLECTION CHANNEL VELOCITY

Date 28-Sep-13
By: pete/eric

Bay(s)	Time	Sec.	Velocity (f/s)
0-2	0:01:35	95	1.89
2 - 4	0:02:36	156	2.95
4 - 6	0:03:35	215	3.05
6 - 8	0:04:37	277	2.90
8 - 10	0:05:34	334	3.16
10 - 12	0:06:40	400	2.73
12 - 14	0:07:46	466	2.73
14 - 16	0:08:48	528	2.90
16 - 18	0:09:32	572	4.09

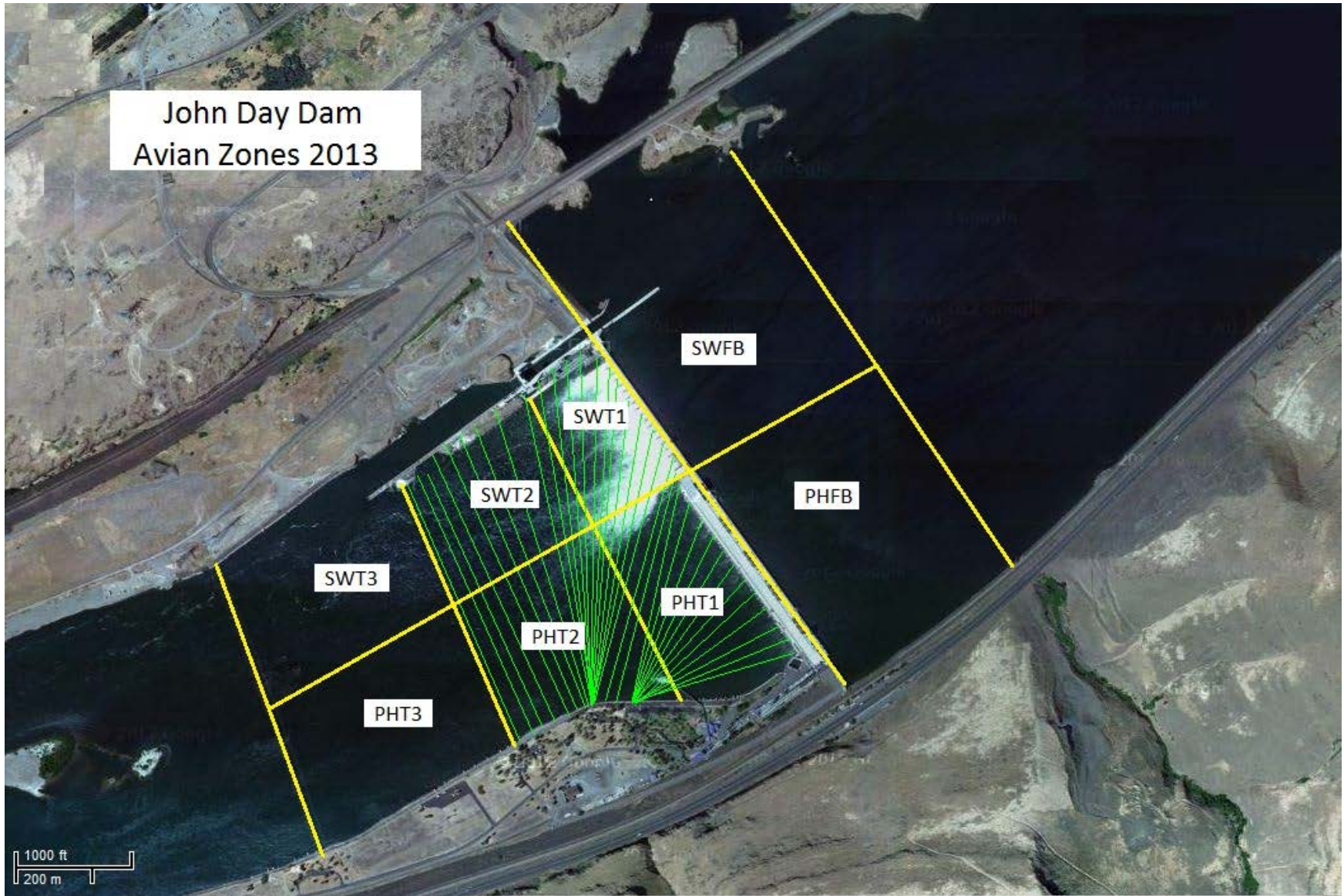
2.93

Bird Count by Activity



Date	Total Count	Mean Foraging Count	Mean Flyby Count	Mean Resting Count	Mean Scavenging Count
9/22/2013	9	6		3	0
9/23/2013	15	12		3	0
9/24/2013	85	16		69	0
9/25/2013	100	0	3	97	0
9/26/2013	156	42		114	0
9/27/2013	85	4		81	0
9/28/2013	180	6		174	0

John Day Dam
Avian Zones 2013



John Day:

	Temp:	Secchi:	Fallbacks
Sun	70	5.5	
Mon	70	6.0	
Tues	70	6.0	
Wed	69	6.0	
Thur	69	5.0	
Fri	67	5.0	
Sat	67	5.0	
AVG:	68.9	5.5	AVG
			MAX
			MIN

	NE1	NE2	S.Ent	SE1	N.Ent	JBS Diff	Bay1	Bay19
Sun	8.4	8.3	1.2	9.8	1.2	4.6	1.7	1.2
Sun	8.7	8.7	1.3	10.2	1.2	4.6	1.7	1.0
Mon	8.9	8.9	1.4	10.0	1.2	4.6	1.8	1.1
Mon	8.6	8.6	1.4	9.7	1.2	4.6	1.8	1.1
Tues	8.0	8.0	1.5	9.6	1.5	4.6	1.9	1.2
Tues	8.5	8.5	1.4	9.8	1.4	4.6	1.9	1.1
Wed	8.2	8.2	1.7	8.6	1.5	4.6	2.0	1.3
Wed	8.1	8.2	1.4	8.2	1.6	4.6	1.9	1.2
Thur	8.3	8.1	1.6	8.1	1.6	4.6	2.0	1.3
Thur	8.3	8.3	1.6	8.5	1.5	4.6	2.0	1.1
Fri	8.4	8.4	1.4	8.3	1.5	4.6	1.7	1.4
Fri	8.2	8.3	1.3	8.9	1.4	4.6	1.8	1.4
Sat	8.5	8.6	1.4	8.9	1.4	4.6	1.8	1.5
Sat	8.2	8.4	1.3	8.8	1.5	4.6	1.3	0.6
AVG:	8.4	8.4	1.4	9.1	1.4	4.6	1.8	1.2