


FISHWAY STATUS REPORT

Date: 8/24/2013
Inspection Period: 8/18 thru 8/24/2013

All JD Fishways are inspected twice per day during walk throughs;
 frequent monitoring of the PLC displays in SMF Fisheries Office as necessary.



**US Army Corps
of Engineers**
Portland District

JOHN DAY DAM
 JD/WC Project-Fisheries
 P.O. Box 823
 Rufus, Oregon 97050
 Phone: 541-506-7860

John Day Dam	Inspections	Criteria	Total Number of Inspections:	Temperature:
	Out of Criteria	Limit	14	72.0 F
			Secchi:	4.8 Ft.
NORTH FISHWAY			In regular service since 4/3/13. Technical issues with new AWS pumps continue.	
Exit differential	0	≤ 0.5'		
Exit Control weirs	0	High setting	High setting is normal for JDN	
Count station differential	0	≤ 0.3'		
Weir crest depth	0	1.0' ± 0.1'		
Entrance differential	0	1.0' - 2.0'	AVG 1.5	
SOUTH FISHWAY			AWS turbine 2 returned to service on 8/1; regular- three turbines ops since	
Exit differential	0	≤ 0.5'		
Exit Control weirs	0	Mid setting	Mid setting is normal for JDS	
Count station differential	0	≤ 0.3'		
Weir crest depth	0	1.0' ± 0.1'		
South entrance differential	0	1.0' - 2.0'	AVG 1.5	
Entrance weir SE1	0	depth (≥ 8')	AVG 8.9	
Collection channel velocity	0	1.5 - 4 fps	ft/sec 2.99	
Bay 1 differential	0	1.0' - 2.0'	AVG 1.9	
N. Entrance PH(Bay 19)differential	0	1.0' - 2.0'	AVG 1.2	
Entrance weir NE1	0	depth (≥ 8')	AVG 8.3	
Entrance weir NE2	0	depth (≥ 8')	AVG 8.3	
JUVENILE PASSAGE			SMF in bypass since 7/25; due to river temp over 70 F	
Forebay/bypass conduit differential	0	4.0' - 5.0'	AVG 4.6	
Submersible traveling screens	0	visual inspect	monthly video STSs inspection is scheduled for next week, 8/26 -29	
Turbine trashrack drawdown	0	<1.5', wkly	very low river debris loads and low drawdown measurements	
Vert barrier screen drawdown	0	<1.5', wkly		
Spill volume	0	per FPP	Spill for fish passage started on 4/10; alternating 30/ 40 % levels same as 2012	
Spill pattern	0	per FPP		
Turbine Unit Priority	0	per FPP		
Turbine 1% Efficiency	0	per FPP		

SMOLT MONITORING FACILITY

Operation: SMF switched to bypass mode at switch gate on 7/25 due to > 70 F water temperature. Manned 24/7 thru 9/15 by COE personnel. PSMFC biologists performing condition sampling, twice weekly until water temp reaches 69.5 degrees, possibly through early September. PDS screen rake continues in regular service without any issues.

Debris: Very light

Maintenance:

SMF CCTV replacement is in planning stage ; on hold due to lack of funding. Likely implementation in FY 2014 :)

Research: None. No fish collections are planned for 2013.

Fallbacks: AVG: 6 MAX: 6 MIN: 5

OTHER ISSUES:

JOHN DAY

Birds: See Avian tabs.

123 avian lines are properly installed. Two lines are currently missing; spillway/TSW line broke on 4/12/13. JD Management preparing a plan for the missing lines' replacement before 2014 passage season.

Gull hazing by USDA boat crew completed for 2013 season on 7/29. Very few gulls are observed around JD at this time of year.

Operations:

JD North Fishway in service, meeting FPP optimal criteria with 4 out of 6 AWS pumps operational; # 2 & # 4 OOS due to continuing technical issues.

JD N AWS pump # 4 OOS due to failed lower bearing; its investigation continues. RTDs issue for all six pumps continues as well.

Installation of new internet switches for JDN AWS pumps unsuccessful/ delayed.

JD South Fishway in service with all three AWS turbines and is meeting the optimal FPP criteria.

All JD Spillway bays are in regular service per FPP pattern requirement.

Maintenance:

Gatewell draw down: Measurements made on 8/18 & 21. All units were within established limits.

Calibration: 8/21/2013 All JD Fishways' PLCs/ water level sensors were within 0.3' margin of error.

Research:

WDFW dam angling ongoing ; weekly catch ending 8/25 was 2 NPM with 2,171 total since 5/1. Fishing is expected to continue through August.

Fish counting at both JD Fishways ongoing as required by FPP.

JD South automated lamprey trap's 2013 operations successfully concluded on 8/27. Umatilla, Yakama and Nez Perce tribes got their lamprey quotas.

The lamprey caught at JD are used for the tribal lamprey re-stocking programs upriver. Kudos to JD structural crew for their mobile crane support !

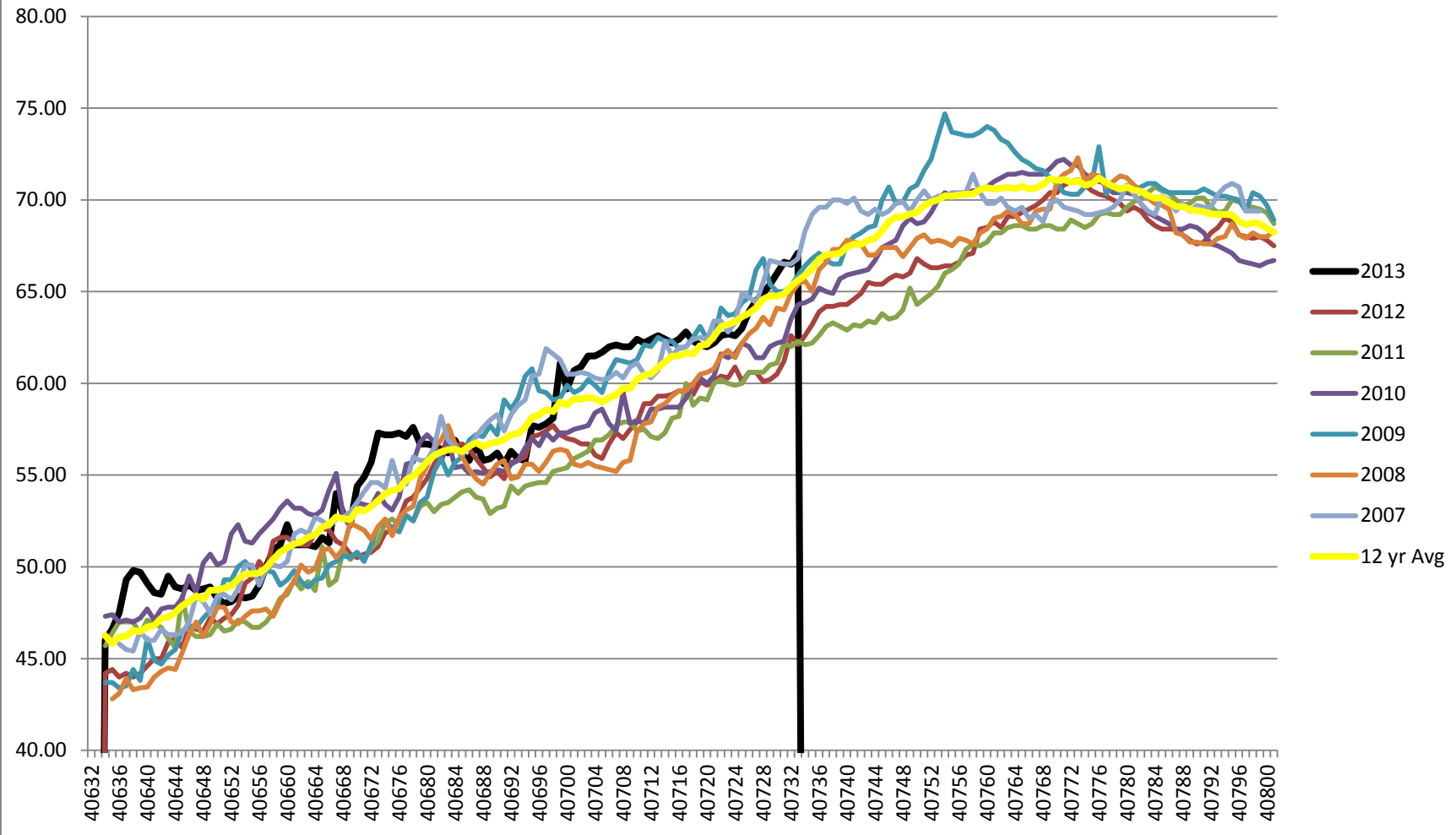
JD North Lamprey Passage System's (LPS) continues experimental operation since mid July; U of I crew checking its collector box daily.

Adult Salmonids Radio telemetry evaluations are ongoing at both JD adult fishway. University of Idaho crew is in charge of detecting of all adult adult salmonids, which were first tagged at Bonneville Dam.

Glen A. Smith PE
OPM John Day/Willow Creek Project

Date: ___ 27-Aug-13

2007-2013 Water Temps JDA w/ 12yr avg



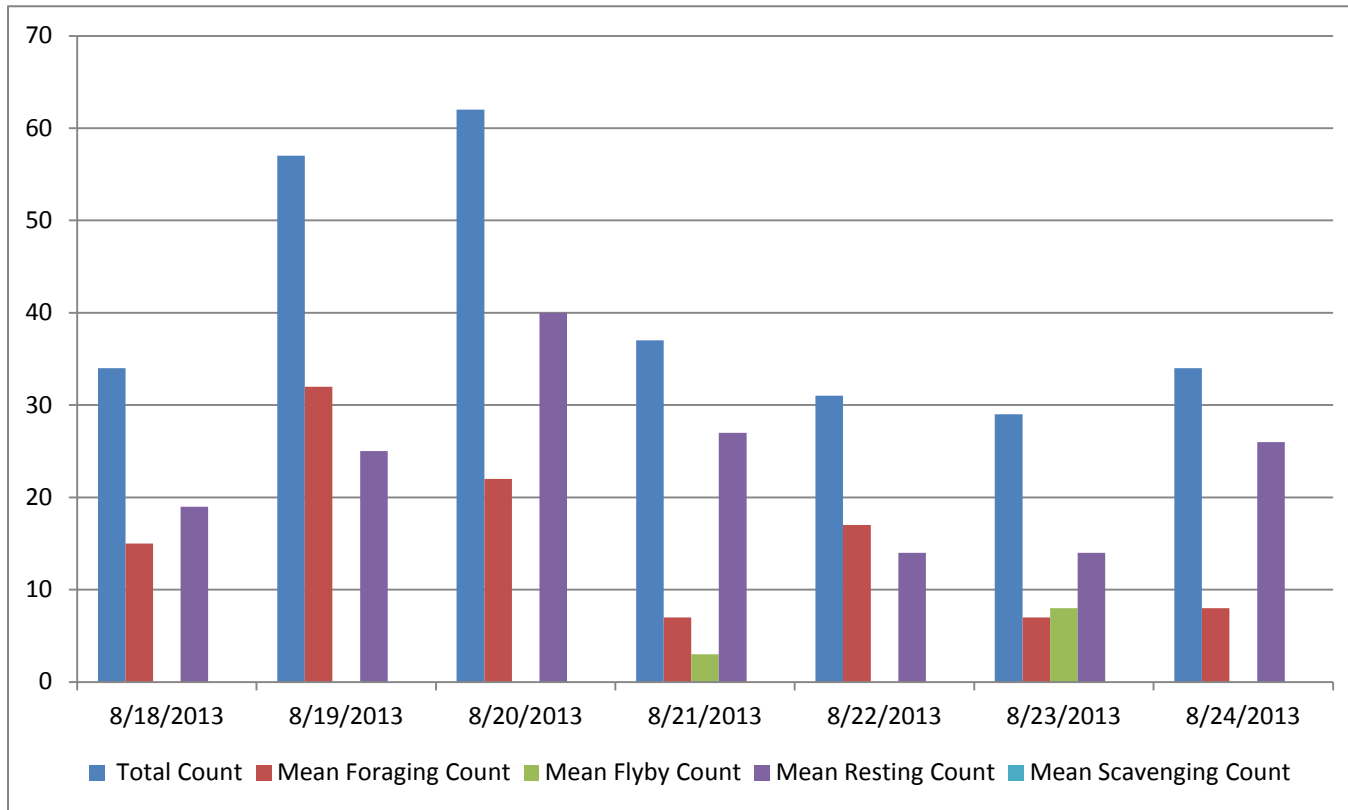
JDA COLLECTION CHANNEL VELOCITY

Date 16-Aug-13
By: pete

Bay(s)	Time	Sec.	Velocity (f/s)
0-2	0:01:44	104	1.73
2 - 4	0:02:38	158	3.33
4 - 6	0:03:37	217	3.05
6 - 8	0:04:35	275	3.10
8 - 10	0:05:35	335	3.00
10 - 12	0:06:38	398	2.86
12 - 14	0:07:44	464	2.73
14 - 16	0:08:46	526	2.90
16 - 18	0:09:29	569	4.19

2.99

Bird Count by Activity



Date	Total Count	Mean Foraging Count	Mean Flyby Count	Mean Resting Count	Mean Scavenging Count
8/18/2013	34	15		19	0
8/19/2013	57	32		25	0
8/20/2013	62	22		40	0
8/21/2013	37	7	3	27	0
8/22/2013	31	17		14	0
8/23/2013	29	7	8	14	0
8/24/2013	34	8		26	0

John Day Dam
Avian Zones 2013



John Day:

	Temp:	Secchi:	Fallbacks	
Sun	72	4.5		
Mon	72	4.5	5	
Tues	72	4.5		
Wed	72	5.0		
Thur	72	5.0	6	Primary Bypass 13:45
Fri	72	5.0		
Sat	72	5.0		
AVG:	72.0	AVG: 4.8	AVG 6	
			MAX 6	
			MIN 5	

	NE1	NE2	S.Ent	SE1	N.Ent	JBS Diff	Bay1	Bay19
Sun	8.4	8.3	1.5	8.6	1.4	4.7	1.8	1.2
Sun	8.2	8.2	1.4	8.6	1.4	4.7	1.7	1.1
Mon	8.6	8.4	1.7	8.5	1.6	4.5	2.0	1.0
Mon	8.2	8.4	1.7	9.0	1.5	4.5	2.0	1.2
Tues	8.3	8.4	1.7	8.5	1.5	4.6	2.0	1.2
Tues	8.5	8.4	1.7	8.6	1.5	4.6	2.0	1.1
Wed	8.2	8.2	1.5	9.4	1.5	4.5	2.0	1.3
Wed	8.4	8.4	1.6	8.9	1.4	4.6	2.0	1.3
Thur	8.2	8.2	1.6	8.7	1.5	4.5	2.0	1.3
Thur	8.2	8.2	1.5	8.6	1.5	4.5	1.9	1.3
Fri	8.3	8.3	1.4	9.4	1.6	4.6	1.8	1.2
Fri	8.2	8.2	1.4	9.0	1.6	4.6	1.8	1.2
Sat	8.2	8.2	1.4	8.8	1.5	4.5	1.8	1.2
Sat	8.2	8.2	1.4	9.3	1.4	4.5	1.8	1.1
AVG:	8.3	8.3	1.5	8.9	1.5	4.6	1.9	1.2