


FISHWAY STATUS REPORT

Date: 7/7/2013
Inspection Period: 06/30 thru 07/6/2013

All JD Fishways are inspected twice per day during walk throughs;
 frequent monitoring of the PLC displays in SMF Fisheries Office as necessary.

	JOHN DAY DAM	
	JD/WC Project-Fisheries P.O. Box 564 Rufus, Oregon 97050 Phone: 541-506-7860	

John Day Dam	Inspections	Criteria	Total Number of Inspections: 14	Temperature: 64.3 F
	Out of Criteria	Limit		Secchi: 5.0 Ft.
NORTH FISHWAY			In regular service with three AWS pumps since 4/3/13. Six operational since 5/20/13	
Exit differential	0	≤ 0.5'		
Exit Control weirs	0	Mid Setting	Setting changed to mid on 25 June	
Count station differential	0	≤ 0.3'		
Weir crest depth	0	1.3' ± 0.1'	Shad passage criterion of 1.3' commenced on 5/22	
Entrance differential	0	1.0' - 2.0'	AVG 1.5	
SOUTH FISHWAY			In regular service with all three AWS turbines since 2/12/13	
Exit differential	0	≤ 0.5'		
Exit Control weirs	0	Mid setting	Mid setting is normal for JDS	
Count station differential	0	≤ 0.3'		
Weir crest depth	0	1.3' ± 0.1'	Shad passage criterion of 1.3' commenced on 5/22	
South entrance differential	0	1.0' - 2.0'	AVG 1.4	
Entrance weir SE1	0	depth (≥ 8')	AVG 9.9	
Collection channel velocity	0	1.5 - 4 fps	ft/sec 2.96	
Bay 1 differential	0	1.0' - 2.0'	AVG 1.8	
N. Entrance PH(Bay 19)differential	0	1.0' - 2.0'	AVG 1.4	
Entrance weir NE1	0	depth (≥ 8')	AVG 9.4	
Entrance weir NE2	0	depth (≥ 8')	AVG 9.5	
JUVENILE PASSAGE			JBS/SMF continues in regular service, in sampling mode	
Forebay/bypass conduit differential	0	4.0' - 5.0'	AVG 4.6	
Submersible traveling screens	0	visual inspect	STSs camera inspection completed by 6/20; one "bad" screen replaced with spare.	
Turbine trashrack drawdown	0	<1.5', wkly	MU intake trashracks raking scheduled for week of 6/24	
Vert barrier screen drawdown	0	<1.5', wkly		
Spill volume	0	per FPP	Spill for fish passage started on 4/10; alternating 30/ 40 % levels same as 2012	
Spill pattern	0	per FPP		
Turbine Unit Priority	0	per FPP	MU Priority with two TSWs 4/10 through 8/31	
Turbine 1% Efficiency	0	per FPP		

SMOLT MONITORING FACILITY

Operation: SMF in regular sampling mode since 3/31/13. Manned 24/7 thru 9/15 by COE personnel. PSMFC biologists performing daily sampling. PDS screen rake continues in regular service without any issues.

Debris: Light with mostly small beaver-generated sticks and tumbleweeds.

Maintenance: All winter maintenance/PM activities successfully completed by 4/1/13.

PSMFC crew installed new wiring for the full flow PIT tag detectors.

SMF CCTV replacement is in planning stage ; on hold due to lack of funding. Likely implementation in FY 2014 :)

Research: None. No fish collections are planned for 2013.

Fallbacks: AVG: 265 MAX: 327 MIN: 211

OTHER ISSUES:

JOHN DAY

Birds: See Avian tabs.

123 avian lines are properly installed. Two lines are currently missing; spillway/TSW line broke on 4/12/13. JD Management preparing a plan for the missing lines' replacement before 2014 passage season.

Daily, 8 hrs gull hazing shifts by USDA boat crew started at JD tailrace on 4/17; ongoing and effective so far.

Overall, the JD gull abundance / predation is small and under control.

Operations:

JD North Fishway in regular service with three AWS pumps operational since 4/2. Six pumps operational since 5/20; JDN is meeting the optimal entrance/FPP criteria of 1.5'. One adult chinook trapped between CS picketed leads reported on 5/22; JD Fisheries immediately closed/ eliminated netting gaps and verified proper fit of picketed leads. Attempts to net the fish unsuccessful so far.

JD South Fishway in regular service with all three AWS turbines; it is meeting the optimal entrances' criteria of 1.5' .

All JD Spillway bays are in regular service per FPP pattern requirement.

Maintenance:

There were no major maintenance issues during this report period.

Gatewell draw down: Measurements made on 7/3. All units were within established limits.

Calibration: 7/6/2013 All JD Fishways' PLCs/ water level sensors were within 0.3' margin of error.

Research:

WDFW dam angling ongoing ; weekly catch ending 6/30 was 291 NPM with 1248 total since 5/1. Fishing is expected to continue through August.

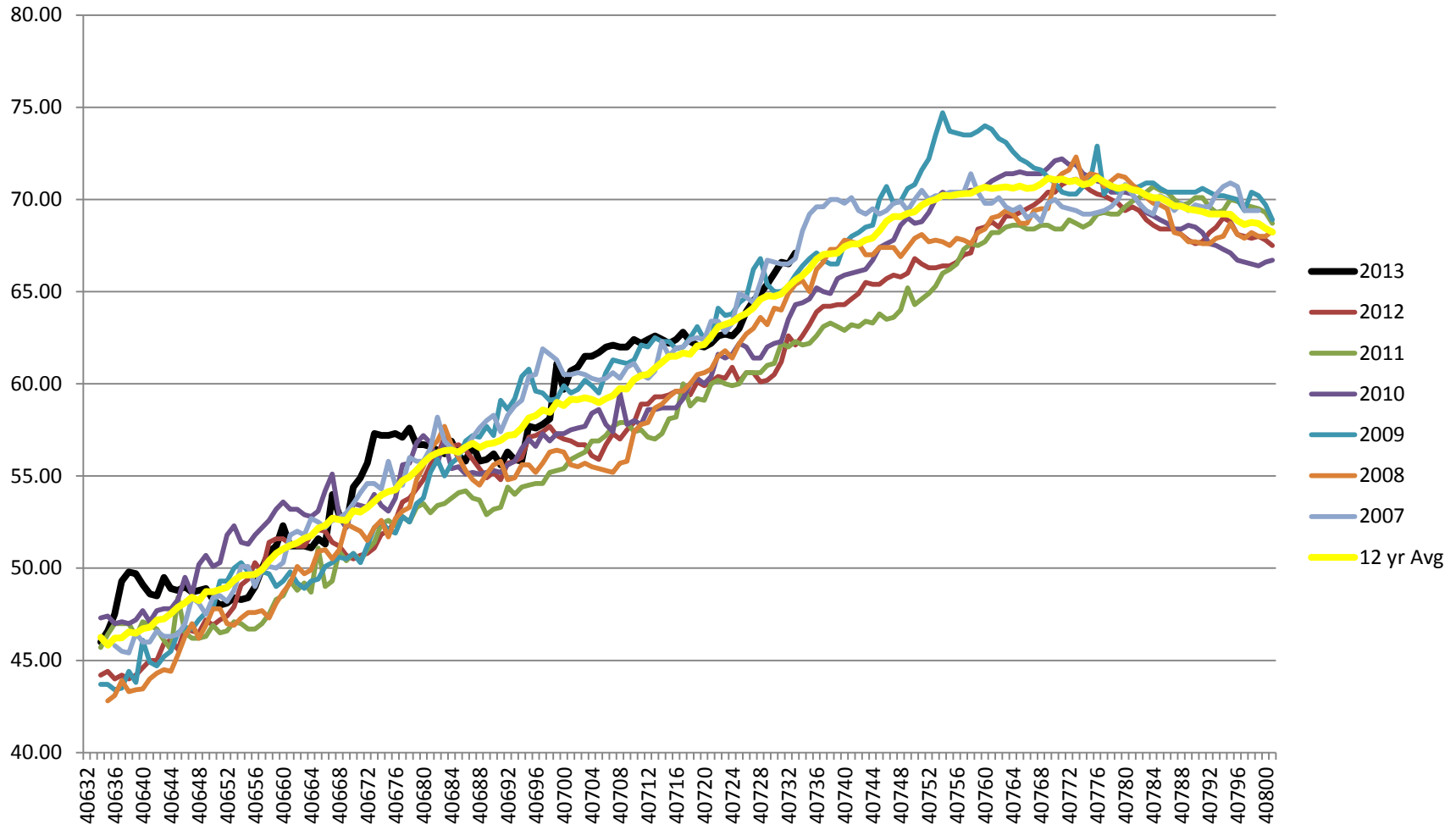
Fish counting at both JD Fishways ongoing as required by FPP.

JD South automated lamprey trap was activated on 6/23. JD Structural crew will provide mobile crane support daily during work week, Monday - Thursday. The Umatilla tribe will off load and monitor collected lamprey daily at 0930 hrs.

JD North Lamprey Passage System's (LPS) test start up occurred on 6/20. JD electrician assisted U of I engineer; some wiring deficiencies were noted and will be corrected before the season's start in early July.

Adult Salmonids Radio telemetry evaluations are ongoing at both JD adult fishway. University of Idaho crew is in charge of detecting of all adult adult salmonids, which were first tagged at Bonneville Dam.

2007-2013 Water Temps JDA w/ 12yr avg



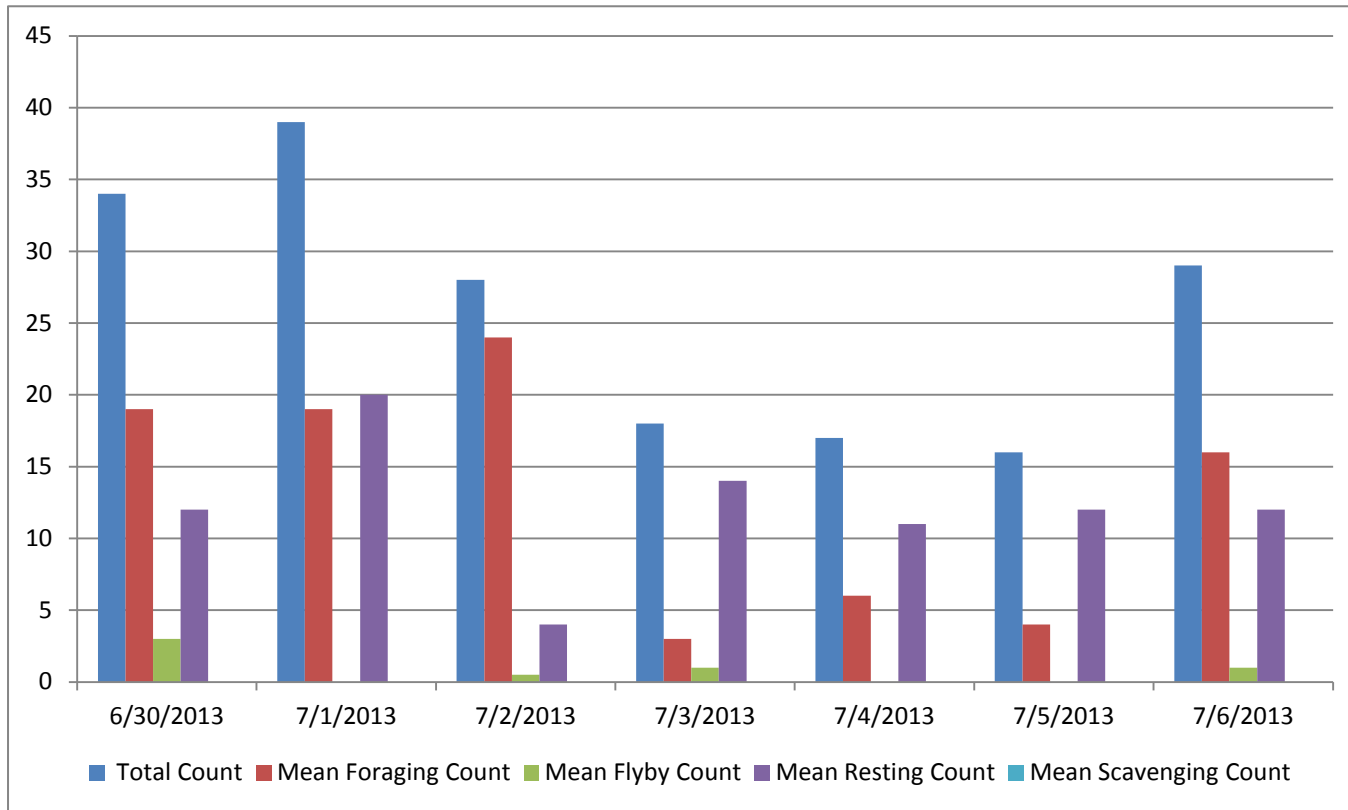
JDA COLLECTION CHANNEL VELOCITY

Date 6-Jul-13
By: Eric

Bay(s)	Time	Sec.	Velocity (f/s)
0-2	0:01:19	77	2.34
2 - 4	0:02:12	132	3.27
4 - 6	0:03:14	194	2.90
6 - 8	0:04:11	251	3.16
8 - 10	0:05:15	315	2.81
10 - 12	0:06:18	378	2.86
12 - 14	0:07:18	438	3.00
14 - 16	0:08:24	504	2.73
16 - 18	0:09:14	554	3.60

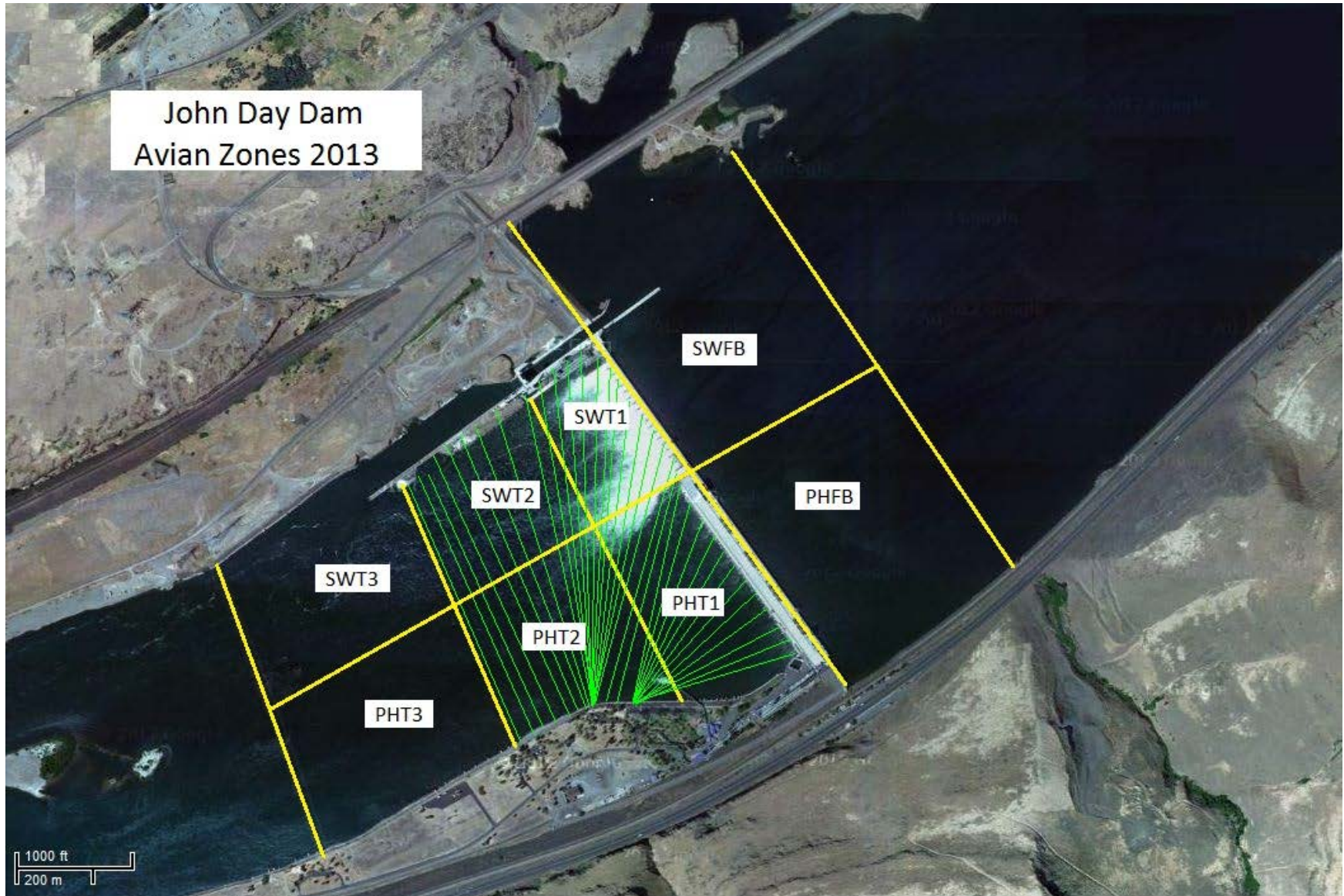
2.96

Bird Count by Activity



Date	Total Count	Mean Foraging Count	Mean Flyby Count	Mean Resting Count	Mean Scavenging Count
6/30/2013	34	19	3	12	0
7/1/2013	39	19	0	20	0
7/2/2013	28	24	1	4	0
7/3/2013	18	3	1	14	0
7/4/2013	17	6	0	11	0
7/5/2013	16	4	0	12	0
7/6/2013	29	16	1	12	0

John Day Dam
Avian Zones 2013



John Day:

	Temp:	Secchi:	Fallbacks
Sun	63	4.0	239
Mon	64	5.5	251
Tues	64	5.5	280
Wed	64	5.0	211
Thur	65	5.0	235
Fri	65	5.0	315
Sat	65	5.0	327
AVG:	64.3	AVG: 5.0	AVG 265
			MAX 327
			MIN 211

	NE1	NE2	S.Ent	SE1	N.Ent	JBS Diff	Bay1	Bay19
Sun	8.5	8.3	1.6	10.0	1.5	4.6	1.8	1.4
Sun	9.5	9.7	1.3	10.1	1.4	4.5	1.8	1.4
Mon	9.7	9.7	1.4	10.1	1.4	4.6	1.8	1.3
Mon	10.0	10.0	1.3	9.5	1.5	4.6	1.8	1.5
Tues	9.8	9.8	1.3	10.1	1.5	4.6	1.8	1.3
Tues	9.8	9.8	1.3	9.5	1.6	5.0	1.6	1.4
Wed	9.9	9.9	1.3	10.3	1.5	4.6	1.8	1.6
Wed	9.6	9.8	1.3	9.5	1.4	4.5	1.8	1.6
Thur	10.3	10.1	1.4	10.1	1.5	4.5	1.7	1.4
Thur	9.4	9.5	1.3	9.3	1.6	4.6	1.9	1.5
Fri	8.7	8.9	1.4	10.3	1.4	4.6	1.8	1.5
Fri	8.7	8.8	1.4	9.4	1.4	4.5	1.9	1.6
Sat	8.6	8.7	1.4	10.0	1.6	4.6	1.8	1.3
Sat	9.3	9.5	1.4	10.1	1.5	4.5	1.7	1.4
AVG:	9.4	9.5	1.4	9.9	1.5	4.6	1.8	1.4