


FISHWAY STATUS REPORT

Date: 6/23/2013
Inspection Period: 6/16 thru 6/22/13

All JD Fishways are inspected twice per day during walk throughs;
 frequent monitoring of the PLC displays in SMF Fisheries Office as necessary.



JOHN DAY DAM

JD/WC Project-Fisheries
 P.O. Box 564
 Rufus, Oregon 97050
 Phone: 541-506-7860

John Day Dam	Inspections	Criteria	Total Number of Inspections:	14	Temperature:	62.6 F
	Out of Criteria	Limit			Secchi:	3.9 Ft.
NORTH FISHWAY			In regular service with three AWS pumps since 4/3/13. Six operational since 5/20/13			
Exit differential	0	≤ 0.5'				
Exit Control weirs	0	High Setting	High setting is normal for JDN			
Count station differential	0	≤ 0.3'				
Weir crest depth	0	1.3' ± 0.1'	Shad passage criterion of 1.3' commenced on 5/22			
Entrance differential	0	1.0' - 2.0'	AVG	1.5		
SOUTH FISHWAY			In regular service with all three AWS turbines since 2/12/13			
Exit differential	0	≤ 0.5'				
Exit Control weirs	0	Mid setting	Mid setting is normal for JDS			
Count station differential	0	≤ 0.3'				
Weir crest depth	0	1.3' ± 0.1'	Shad passage criterion of 1.3' commenced on 5/22			
South entrance differential	0	1.0' - 2.0'	AVG	1.4		
Entrance weir SE1	0	depth (≥ 8')	AVG	9.9		
Collection channel velocity	0	1.5 - 4 fps	ft/sec	3.19		
Bay 1 differential	0	1.0' - 2.0'	AVG	1.8		
N. Entrance PH(Bay 19)differential	0	1.0' - 2.0'	AVG	1.3		
Entrance weir NE1	0	depth (≥ 8')	AVG	8.8		
Entrance weir NE2	0	depth (≥ 8')	AVG	8.9		
JUVENILE PASSAGE			JBS/SMF continues in regular service, in sampling mode			
Forebay/bypass conduit differential	0	4.0' - 5.0'	AVG	4.6		
Submersible traveling screens	0	visual inspect	STSs camera inspection completed by 6/20; one "bad" screen replaced with spare.			
Turbine trashrack drawdown	0	<1.5', wkly	MU intake trashracks raking scheduled for week of 6/24			
Vert barrier screen drawdown	0	<1.5', wkly				
Spill volume	0	per FPP	Spill for fish passage started on 4/10; alternating 30/ 40 % levels same as 2012			
Spill pattern	0	per FPP				
Turbine Unit Priority	0	per FPP	MU Priority with two TSWs 4/10 through 8/31			
Turbine 1% Efficiency	0	per FPP				

SMOLT MONITORING FACILITY

Operation: SMF in regular sampling mode since 3/31/13. Manned 24/7 thru 9/15 by COE personnel. PSMFC biologists performing daily sampling. PDS screen rake continues in regular service without any issues.

Debris: Light with mostly small beaver-generated sticks and tumbleweeds.

Maintenance: All winter maintenance/PM activities successfully completed by 4/1/13.

PSMFC crew installing new wiring for the full flow PIT tag detectors.

SMF CCTV replacement is in planning stage ; on hold due to lack of funding. Likely implementation in FY 2014 :)

Research: None. No fish collections are planned for 2013.

OTHER ISSUES:**JOHN DAY**

Birds: See Avian tabs.

123 avian lines are properly installed. Two lines are currently missing; spillway/TSW line broke on 4/12/13. JD Management preparing a plan for the missing lines' replacement before 2014 passage season.

Daily, 8 hrs gull hazing shifts by USDA boat crew started at JD tailrace on 4/17; ongoing and effective so far.

Overall, the JD gull abundance / predation is small and under control.

Operations:

JD North Fishway in regular service with three AWS pumps operational since 4/2. Six pumps operational since 5/20; JDN is meeting the optimal entrance/FPP criteria of 1.5'. One adult chinook trapped between CS picketed leads reported on 5/22; JD Fisheries immediately closed/ eliminated netting gaps and verified proper fit of picketed leads. Attempts to net the fish unsuccessful so far.

JD South Fishway in regular service with all three AWS turbines; it is meeting the optimal entrances' criteria of 1.5'.

All JD Spillway bays are in regular service per FPP pattern requirement.

New construction:

The last of six JD North AWS pumps, # 5, was completed and returned to regular service on 5/20.

Maintenance:

There were no major maintenance issues during this report period.

Gateway draw down: Measurements made on 6/16 and 6/19. All units were within established limits.

Calibration: 6/22/2013 All JD Fishways' PLCs/ water level sensors were within 0.3' margin of error.

Research:

WDFW dam angling ongoing ; weekly catch ending 6/23 was 268 NPM with 957 total since 5/1. Fishing is expected to continue through August.

Fish counting at both JD Fishways ongoing as required by FPP.

JD South automated lamprey trap is to be activated on 6/23. JD Structural crew will provide mobile crane support daily during work week, Monday - Thursday. The Umatilla tribe will off load and monitor collected lamprey daily at 0930 hrs.

JD North Lamprey Passage System's (LPS) test start up occurred on 6/20. JD electrician assisted U of I engineer; some wiring deficiencies were noted and will be corrected before the season's start in early July.

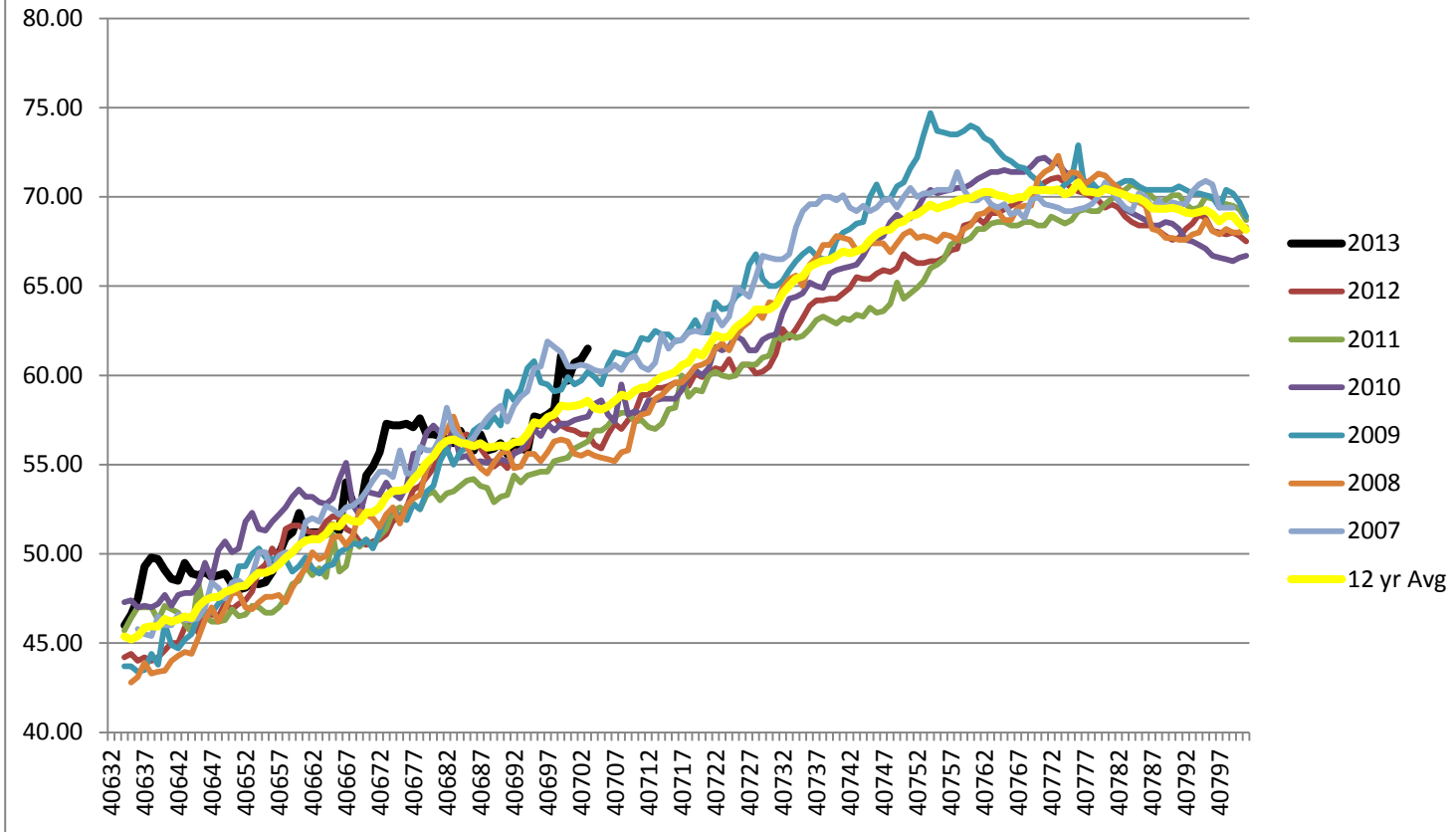
Adult Salmonids Radio telemetry evaluations are ongoing at both JD adult fishway. University of Idaho crew is in charge of detecting of all adult adult salmonids, which were first tagged at Bonneville Dam.

Glen A. Smith PE

OPM John Day/Willow Creek Project

Date: _____

2007-2013 Water Temps JDA w/ 12yr avg



JDA COLLECTION CHANNEL VELOCITY

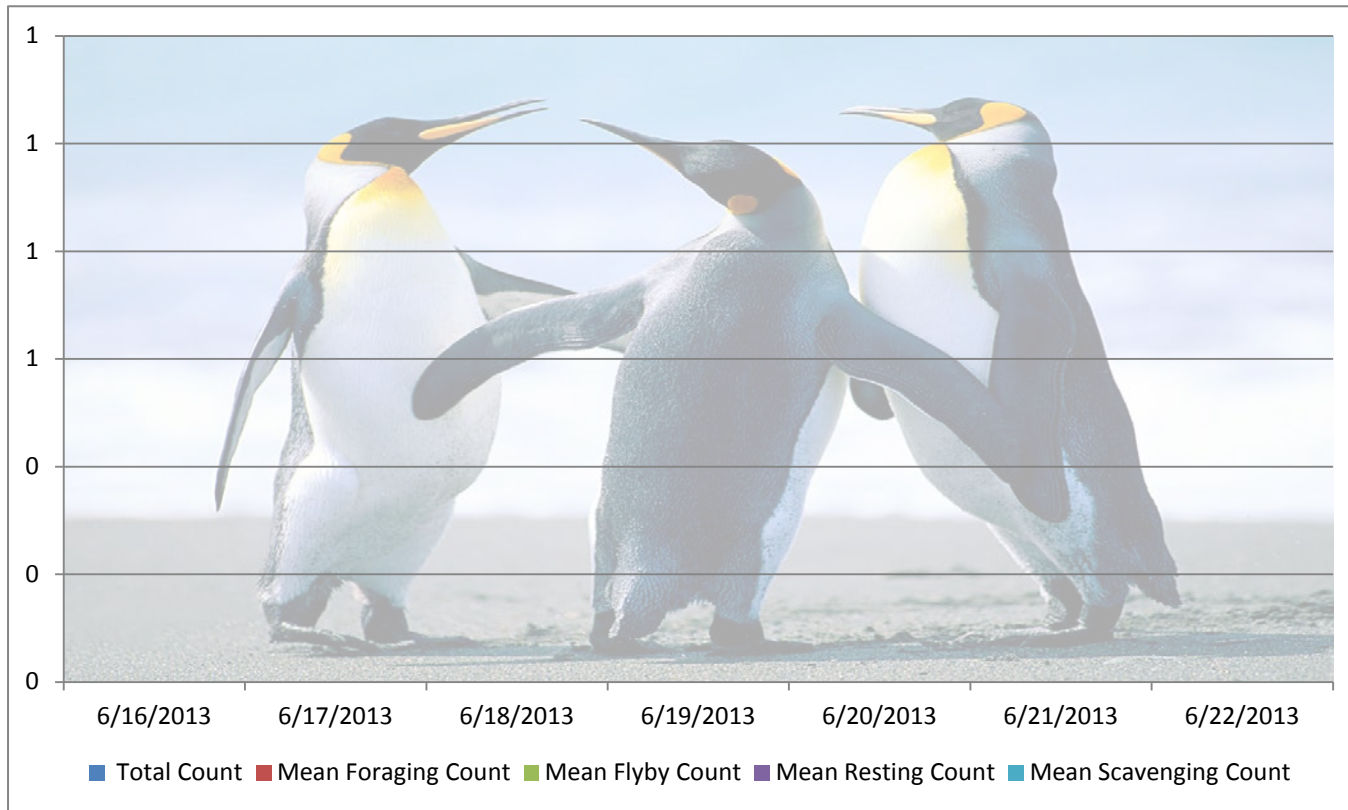
Date 21-Jun-13

By: pete

Bay(s)	Time	Sec.	Velocity (f/s)
0-2	0:01:17	77	2.34
2 - 4	0:02:16	136	3.05
4 - 6	0:03:12	192	3.21
6 - 8	0:04:08	248	3.21
8 - 10	0:05:05	305	3.16
10 - 12	0:05:57	357	3.46
12 - 14	0:06:53	413	3.21
14 - 16	0:07:51	471	3.10
16 - 18	0:08:36	516	4.00

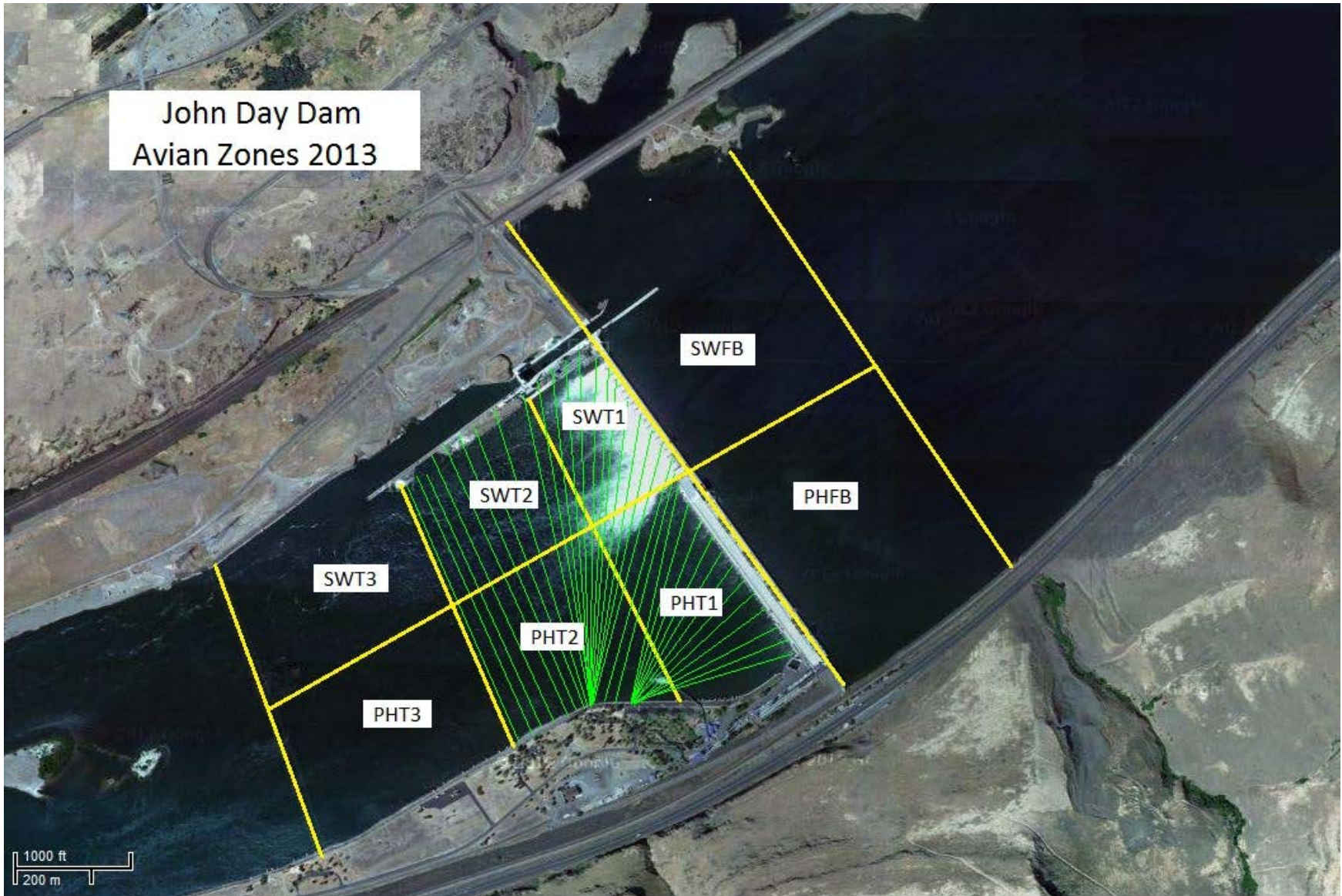
3.19

Bird Count by Activity



Date	Total Count	Mean Foraging Count	Mean Flyby Count	Mean Resting Count	Mean Scavenging Count
6/16/2013					
6/17/2013					
6/18/2013					
6/19/2013					
6/20/2013					
6/21/2013					
6/22/2013					

John Day Dam
Avian Zones 2013



John Day:

	Temp:	Secchi:	Fallbacks
Sun	62	4.0	46
Mon	62	4.0	63
Tues	62	3.5	100
Wed	63	4.0	101
Thur	63	4.0	133
Fri	63	4.0	149
Sat	63	4.0	171
AVG:	62.6	AVG: 3.9	AVG 109
			MAX 171
			MIN 46

	NE1	NE2	S.Ent	SE1	N.Ent	JBS Diff	Bay1	Bay19
Sun	8.8	8.6	1.7	9.2	1.5	4.6	1.9	1.3
Sun	8.4	8.6	1.6	9.9	1.4	4.5	2.0	1.4
Mon	8.2	8.3	1.2	9.9	1.6	4.6	1.8	1.4
Mon	8.4	8.5	1.4	10.0	1.4	4.2	1.9	1.4
Tues	8.3	8.4	1.2	10.1	1.6	4.6	1.6	1.2
Tues	8.8	8.9	1.5	9.9	1.4	4.6	1.8	1.4
Wed	8.4	8.5	1.3	10.1	1.4	4.6	1.7	1.2
Wed	9.6	9.8	1.4	10.1	1.4	4.5	1.8	1.3
Thur	8.7	8.8	1.4	9.6	1.5	4.6	1.8	1.4
Thur	8.9	9.0	1.4	9.8	1.5	4.6	1.9	1.4
Fri	8.6	8.4	1.4	9.4	1.6	4.6	1.8	1.4
Fri	8.6	8.7	1.3	10.2	1.5	4.6	1.6	1.3
Sat	9.4	9.6	1.5	10.0	1.5	4.6	1.9	1.2
Sat	9.9	10.1	1.4	10.0	1.5	4.5	1.9	1.3
AVG:	8.8	8.9	1.4	9.9	1.5	4.6	1.8	1.3