



**OTHER ISSUES:****JOHN DAY**

**Birds:** See Avian tabs.

123 avian lines are properly installed. Two lines are currently missing; spillway/TSW line broke on 4/12/13. JD Management preparing a plan for the missing lines' replacement before 2014 passage season.

Daily, 8 hrs gull hazing shifts by USDA boat crew started at JD tailrace on 4/17; ongoing and effective so far.

Overall, the JD gull abundance / predation is small and under control.

**Operations:**

JD North Fishway in regular service with three AWS pumps operational since 4/2. Six pumps operational since 5/20; JDN is meeting the optimal entrance/FPP criteria of 1.5'. One adult chinook trapped between CS picketed leads reported on 5/22; JD Fisheries immediately closed/ eliminated netting gaps and verified proper fit of picketed leads. Attempting to net the trapped fish with dip nets.

JD South Fishway in regular service with all three AWS turbines; it is meeting the optimal entrances' criteria of 1.5' .

All JD Spillway bays are in regular service per FPP pattern requirement.

**New construction:**

The last of six JD North AWS pumps, # 5, was completed and returned to regular service on 5/20.

**Maintenance:**

There were no major maintenance issues during this report period.

Gateway draw down: Measurements made on 6/9 and 6/12. All units were within established limits.

Calibration: 6/14/2013 All JD Fishways' PLCs/ water level sensors were within 0.3' margin of error.

**Research:**

WDFW dam angling ongoing ; weekly catch ending 6/09 was 368 NPM with 548 total since 5/1. Fishing is expected to continue through August.

Fish counting at both JD Fishways ongoing as required by FPP.

JD South automated lamprey trap is to be activated on 6/23. JD Structural crew will provide mobile crane support daily during work week, Monday - Thursday. The Umatilla tribe will off load and monitor collected lamprey daily at 0930 hrs.

JD North prototype Lamprey Passage System's (LPS) start up is scheduled for 6/20 am. University of Idaho crew will be in charge.

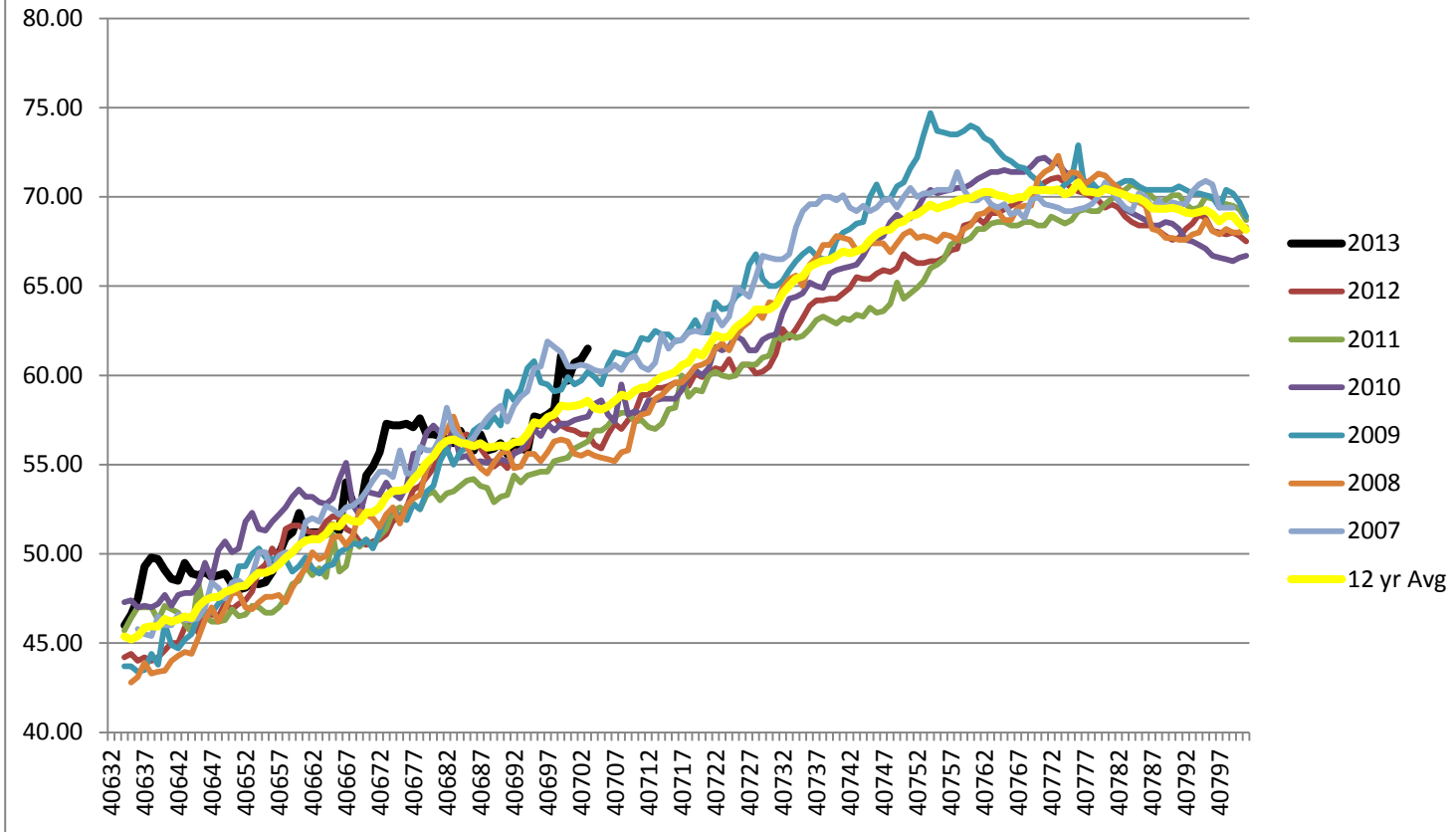
Adult Salmonids Radio telemetry evaluations are ongoing at both JD adult fishway. University of Idaho crew is in charge of detecting of all adult adult salmonids, which were first tagged at Bonneville Dam.

Glen A. Smith PE

OPM John Day/Willow Creek Project

Date: \_\_\_\_\_

### 2007-2013 Water Temps JDA w/ 12yr avg



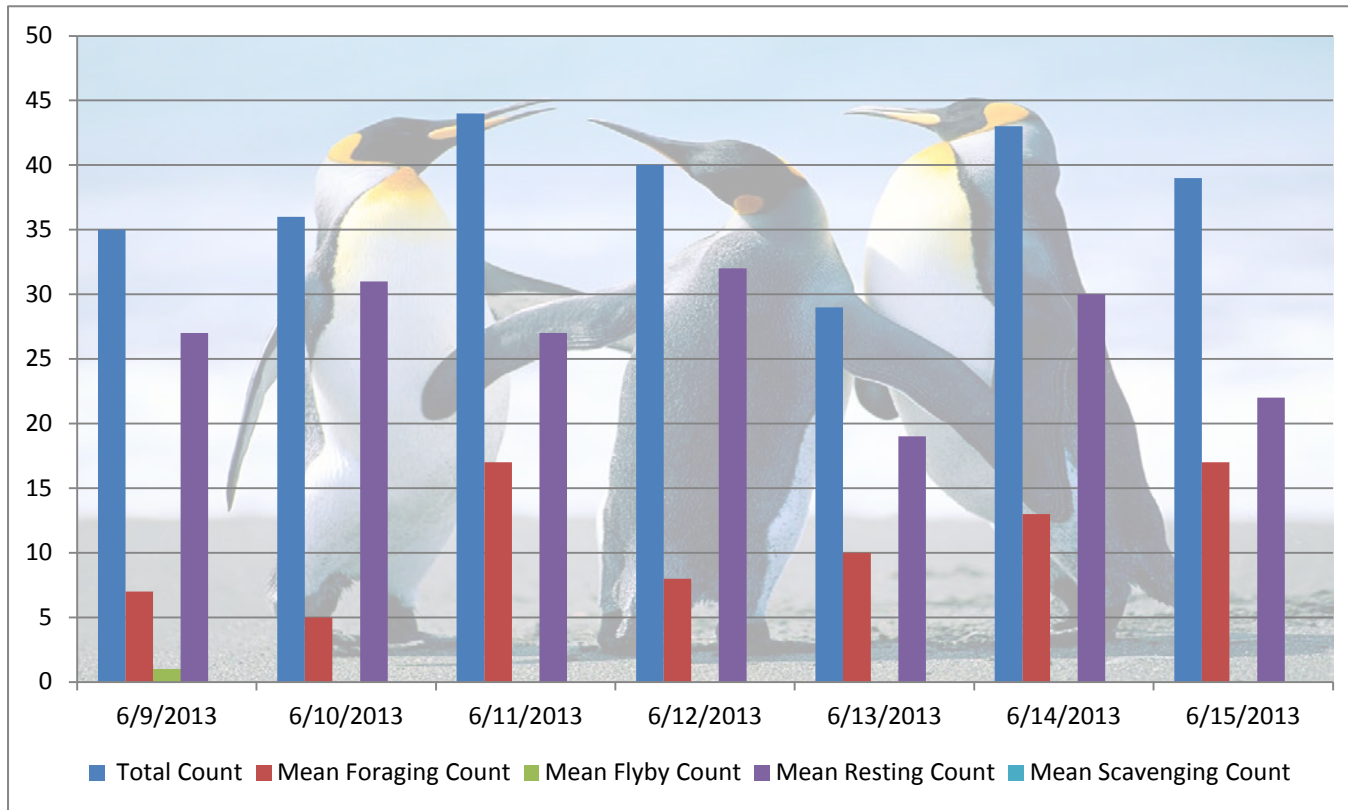
## JDA COLLECTION CHANNEL VELOCITY

Date 7-Jun-13  
By: eric

Bay(s)	Time	Sec.	Velocity (f/s)
0-2	0:01:20	80	2.25
2 - 4	0:02:16	136	3.21
4 - 6	0:03:05	185	3.67
6 - 8	0:03:58	238	3.40
8 - 10	0:04:52	292	3.33
10 - 12	0:05:46	346	3.33
12 - 14	0:06:46	406	3.00
14 - 16	0:07:43	463	3.16
16 - 18	0:08:23	503	4.50

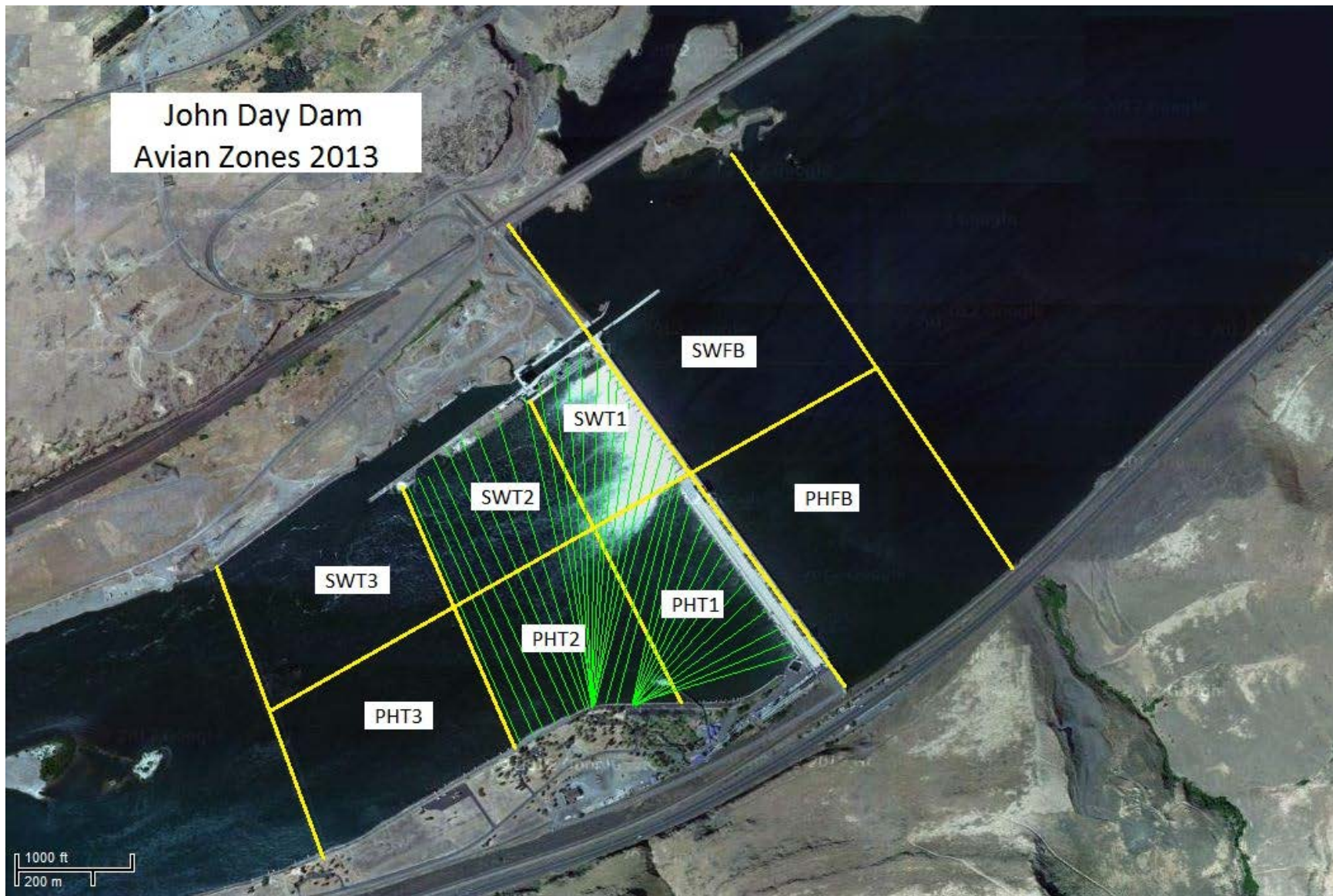
**3.32**

## Bird Count by Activity



Date	Total Count	Mean Foraging Count	Mean Flyby Count	Mean Resting Count	Mean Scavenging Count
6/9/2013	35	7	1	27	0
6/10/2013	36	5	0	31	0
6/11/2013	44	17	0	27	0
6/12/2013	40	8	0	32	0
6/13/2013	29	10	0	19	0
6/14/2013	43	13	0	30	0
6/15/2013	39	17	0	22	0

John Day Dam  
Avian Zones 2013





**John Day:**

	Temp:	Secchi:	Fallbacks
Sun	60	5.0	25
Mon	61	5.0	26
Tues	61	5.0	46
Wed	62	4.0	36
Thur	62	4.0	38
Fri	62	4.0	43
Sat	62	4.0	62
AVG:	61.4	4.4	AVG 39
			MAX 62
			MIN 25

	NE1	NE2	S.Ent	SE1	N.Ent	JBS Diff	Bay1	Bay19
Sun	8.9	9.0	1.3	10.1	1.5	4.5	1.9	1.6
Sun	8.9	9.1	1.5	10.1	1.5	4.6	1.7	1.4
Mon	9.3	9.1	1.5	9.9	1.5	4.6	1.9	1.5
Mon	8.9	9.0	1.4	9.8	1.4	4.5	1.9	1.6
Tues	8.7	8.8	1.3	10.0	1.6	4.6	1.9	1.5
Tues	9.2	9.3	1.5	9.8	1.5	4.5	1.9	1.6
Wed	9.6	9.7	1.7	10.1	1.5	4.6	1.8	1.4
Wed	9.7	9.8	1.5	9.8	1.4	4.6	1.9	1.4
Thur	9.6	9.7	1.8	9.9	1.4	4.6	1.9	1.4
Thur	9.3	9.4	1.4	9.6	1.3	4.5	1.9	1.5
Fri	8.7	8.9	1.2	9.7	1.5	4.7	1.8	1.3
Fri	8.8	9.0	1.3	10.0	1.5	4.6	1.6	1.5
Sat	9.1	8.9	1.6	10.0	1.5	4.6	1.9	1.2
Sat	9.5	9.7	1.7	9.9	1.6	4.6	1.9	1.4
AVG:	9.2	9.2	1.5	9.9	1.5	4.6	1.9	1.5