

OTHER ISSUES:**JOHN DAY**

Birds: See Avian tabs.

123 avian lines are properly installed. Two lines are currently missing; spillway/TSW line broke on 4/12/13. JD Management preparing a plan for the missing lines' replacement before 2014 passage season.

Daily, 8 hrs gull hazing shifts by USDA boat crew started at JD tailrace on 4/17; ongoing and effective so far.

Overall, the JD gull abundance / predation is small and under control.

Operations:

JD North Fishway in regular service with three AWS pumps operational since 4/2. Six pumps operational since 5/20; JDN is meeting the optimal entrance/FPP criteria of 1.5'. One adult chinook trapped between CS picketed leads reported on 5/22; JD Fisheries immediately closed/ eliminated netting gaps and verified proper fit of picketed leads. Attempting to net the trapped fish with dip nets.

JD South Fishway in regular service with all three AWS turbines; it is meeting the optimal entrances' criteria of 1.5' .

All JD Spillway bays are in regular service per FPP pattern requirement.

New construction:

The last of six JD North AWS pumps, # 5, was completed and returned to regular service on 5/20.

Maintenance:

There were no major maintenance issues during this report period.

Gatewell draw down: Measurements made on 6/2 and 6/5. All units were within established limits.

Calibration: 6/8/2013 All JD Fishways' PLCs/ water level sensors were within 0.3' margin of error.

Research:

WDFW dam angling crew commenced NPM removal from JD PH tailrace on 5/1. Fishing has picked up; averaging 100 fish a day. Will continue through the end of August.

Fish counting at both JD Fishways ongoing as required by FPP.

JD South Counting Station' automated lamprey trap in-water installation complete on 2/12; the trap's hoist will be installed outside of fishway in June.

JD North prototype Lamprey Passage System's (LPS) installation was successfully completed by University of Idaho crews by 3/12/13.

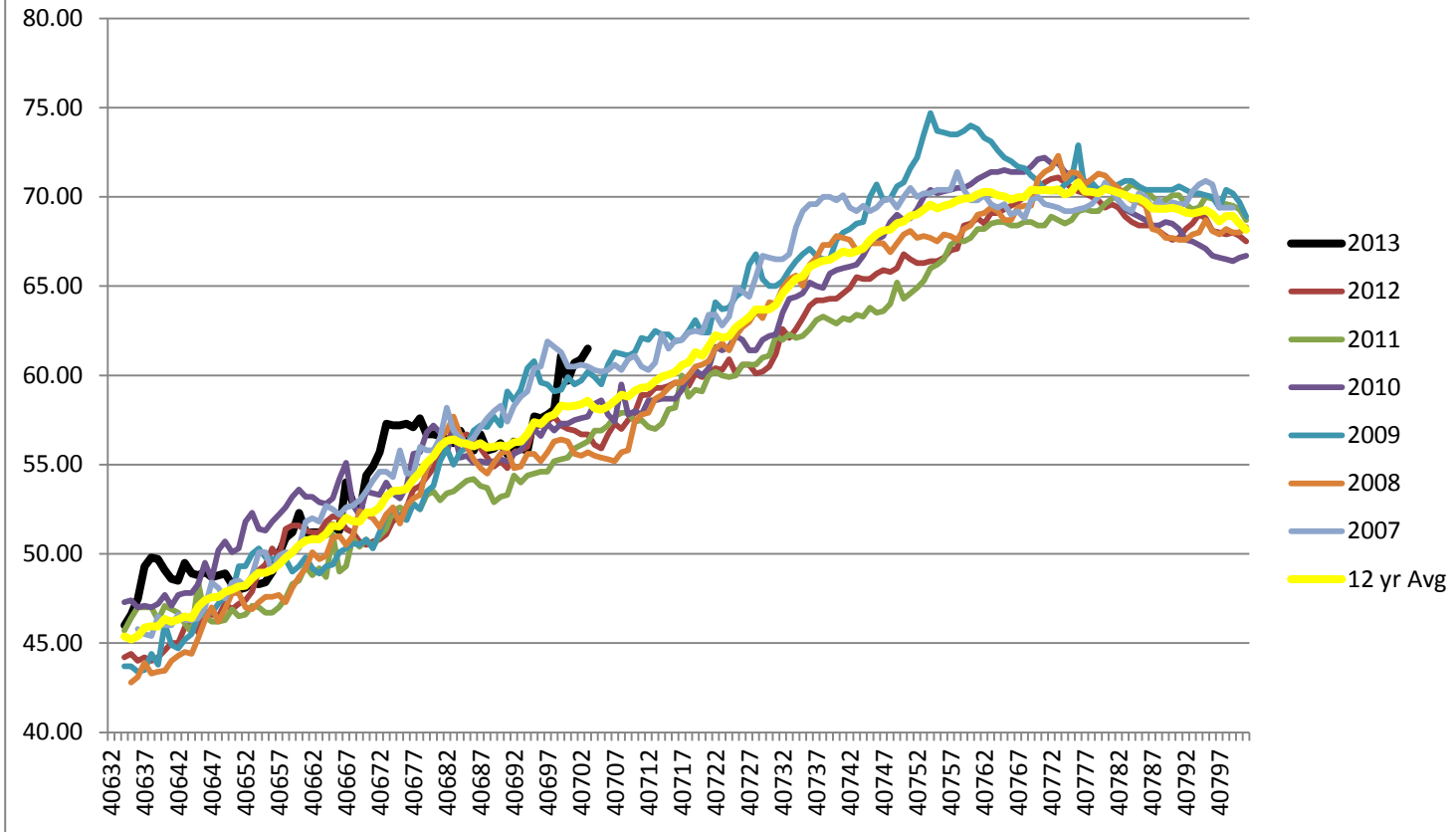
Adult Salmonids Radio telemetry equipment/antennas' set up completed at both JD fishways, by University of Idaho crew by early May; detecting adult spring chinook which were tagged at Bonneville Dam.

Glen A. Smith PE

OPM John Day/Willow Creek Project

Date: _____

2007-2013 Water Temps JDA w/ 12yr avg



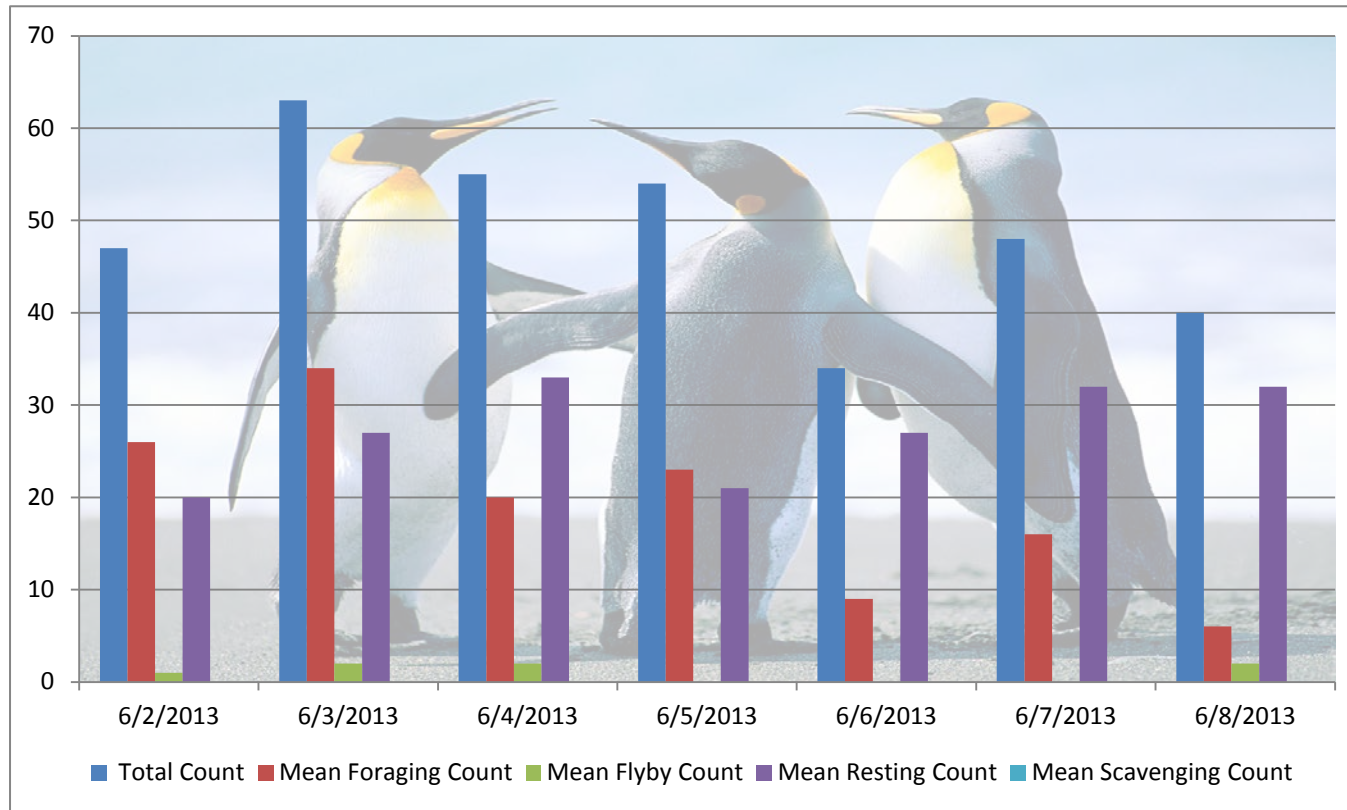
JDA COLLECTION CHANNEL VELOCITY

Date 7-Jun-13
By: eric

Bay(s)	Time	Sec.	Velocity (f/s)
0-2	0:01:20	80	2.25
2 - 4	0:02:16	136	3.21
4 - 6	0:03:05	185	3.67
6 - 8	0:03:58	238	3.40
8 - 10	0:04:52	292	3.33
10 - 12	0:05:46	346	3.33
12 - 14	0:06:46	406	3.00
14 - 16	0:07:43	463	3.16
16 - 18	0:08:23	503	4.50

3.32

Bird Count by Activity



Date	Total Count	Mean Foraging Count	Mean Flyby Count	Mean Resting Count	Mean Scavenging Count
6/2/2013	47	26	1	20	
6/3/2013	63	34	2	27	
6/4/2013	55	20	2	33	
6/5/2013	54	23	0	21	
6/6/2013	34	9	0	27	
6/7/2013	48	16	0	32	
6/8/2013	40	6	2	32	

John Day Dam
Avian Zones 2013



John Day:

	Temp:	Secchi:	Fallbacks
Sun	58	5.0	18
Mon	57	5.0	28
Tues	58	5.0	24
Wed	61	4.0	18
Thur	62	4.0	20
Fri	63	5.0	26
Sat	60	4.0	21
AVG:	59.9	4.6	22
			MAX 28
			MIN 18

	NE1	NE2	S.Ent	SE1	N.Ent	JBS Diff	Bay1	Bay19
Sun	8.4	8.4	1.3	9.1	1.6	4.5	1.7	1.3
Sun	8.7	8.7	1.3	10.1	1.5	4.6	1.7	1.3
Mon	9.0	9.0	1.4	10.0	1.6	4.5	1.9	1.3
Mon	9.5	9.5	1.4	10.0	1.4	4.5	1.9	1.4
Tues	8.8	8.8	1.5	9.9	1.5	4.6	1.9	1.3
Tues	9.1	9.1	1.4	9.9	1.4	4.5	1.9	1.3
Wed	9.4	9.4	1.5	9.8	1.5	4.6	1.9	1.5
Wed	9.0	9.2	1.4	10.0	1.4	4.5	1.8	1.6
Thur	9.2	9.3	1.4	9.1	1.4	4.5	1.9	1.6
Thur	9.5	9.7	1.4	9.9	1.5	4.6	1.8	1.5
Fri	9.1	9.4	1.4	9.8	1.5	4.6	1.8	1.6
Fri	9.0	9.2	1.5	9.8	1.4	4.6	1.8	1.5
Sat	9.4	9.2	1.4	10.1	1.5	4.6	1.7	1.4
Sat	9.3	9.5	1.6	9.8	1.5	4.5	2.0	1.6
AVG:	9.1	9.2	1.4	9.8	1.5	4.6	1.8	1.4