

FISHWAY STATUS REPORT

Date: 1/12/2013
Inspection Period: 1/6 thru 1/12/2012

JOHN DAY DAM



**US Army Corps
of Engineers**
Portland District

JD/WC Project-Fisheries
P.O. Box 564
Rufus, Oregon 97050
Phone: 541-506-7860

One inspection per day since 12/1; additional monitoring via PLC displays located in fisheries office.

John Day Dam	Inspections	Criteria	Total Number of Inspections: 6	Temperature: 41.7 F
	Out of Criteria	Limit	Comments	Secchi: 5.8 Ft.
NORTH FISHWAY			Dewatered/ OOS since 11/5 ETR is mid March 2013.	
Exit differential	OOS	≤ 0.5'		
Exit Control weirs	OOS	HIGH		
Count station differential	OOS	≤ 0.3'		
Weir crest depth	OOS	1.3' ± 0.1'		
Entrance differential	OOS	1.0' - 2.0'	AVG #DIV/0!	
SOUTH FISHWAY			Scheduled for dewatering/ 2 weeks long maintenance outage on 1/28 - 2/11.	
Exit differential	0	≤ 0.5'		
Exit Control weirs	0	MID	Set for MID forebay	
Count station differential	0	≤ 0.3'		
Weir crest depth	0	1.3' ± 0.1'		
South entrance differential	0	1.0' - 2.0'	AVG 1.2	
Entrance weir SE1	0	depth (≥ 8')	AVG 9.8	
Collection channel velocity	0	1.5 - 4 fps	AVG	
Bay 1 differential	0	1.0' - 2.0'	AVG 1.7	
N.entrance PH(Bay 19)differential	0	1.0' - 2.0'	AVG 1.5	
Entrance weir NE1	0	depth (≥ 8')	AVG 8.2	
Entrance weir NE2	0	depth (≥ 8')	AVG 8.1	
JUVENILE PASSAGE			JBS OOS since 12/16. ETR in late March 2013.	
Forebay/bypass conduit differential	OOS	4.0' - 5.0'	AVG 3.6	
Submersible traveling screens	OOS	visual inspect		
Turbine trashrack drawdown	OOS	<1.5', wkly	Inspected weekly. Trashracks are raked immediately if differential is above 1.5'	
Vert barrier screen drawdown	OOS	<1.5', wkly	No discrepancies	
Spill volume	None	per FPP		
Spill pattern	None	per FPP		
Turbine Unit Priority	0	per FPP		
Turbine 1% Efficiency	0	per FPP		

SMOLT MONITORING FACILITY

Operation: SMF OOS since 11/30/12. ETR is 3/28; the juvenile salmonids' daily sampling starting on 4/1/13.

JBS was regular service for the kelt migrants' protection through 12/15. All STSs were removed from gatewells by JD Structural crew by 12/20.

Debris: NA

Maintenance: Planning for winter maintenance/PM activities continues.

JD Electrical scoping for the SMF CCTV replacement; the original system installed in 1998 is barely usable and its components have been failing frequently.

Research: None

OTHER ISSUES:

JOHN DAY

Birds: see web site

123 avian lines are properly installed; two are currently missing after breaking in June.

Planning for reinstallation of all lines before the 2013 passage season underway.

Operations:

2012 fish passage season ended on 11/30. 2013 adult salmonids passage season is starting on 3/1.

JD North Fishway continues OOS; its entrance improvements' construction activities by Slayden underway. ETR is mid March.

JD South fishway in regular service with three AWS turbines and is meeting all FPP criteria.

JBS was in regular service for the kelt migrants' protection through 12/15. All STS were removed from gatewells for winter maintenance by 12/20.

JBS collection channel was dewatered on 1/10; it was flushed multiple times prior to final closing of all water flow. One adult steelhead was found and salvaged/released into the tailrace in excellent condition. Kudos to Mr. Klindt, JD Fisheries for planning, safety clearance and outstanding supervision of this dewatering operation !

New construction:

Contractor / Construction Office are working on bringing of all 6 new JDN AWS pumps into service soon. ETR is mid March.

Slayden continues with the second year of JD North entrance improvements; all their work is on schedule.

JD two TSWs are undergoing repairs/ maintenance by a contractor; they will be a permanent part of JD juvenile fish passage configuration.

Maintenance:

JBS tainter gate's comprehensive inspection by JD Engineering, on 1/14 revealed no damage; the gate is in excellent condition again :)

MU intake raking crane returned to service on 12/5. Kudos to JD Mechanical for accomplishing its lengthy/difficult clutch replacement/repairs!

STS winter maintenance by JD Mechanical crew is underway.

Gatewell draw down: OOS. ETR in late March 2013.

Calibration: 1/11/2013 All JD Fishways' PLCs/ water level sensors were within 0.3' margin of error.

Research:

No fish research or fish counting taking place at JD since October 31.

JD Fisheries involved in PDTs for JD South lamprey trap and in JD North LPS designs.

JD Fisheries involved in planning for winter maintenance/new equipment installations.

Adult fish counting ended on 10/31/2012

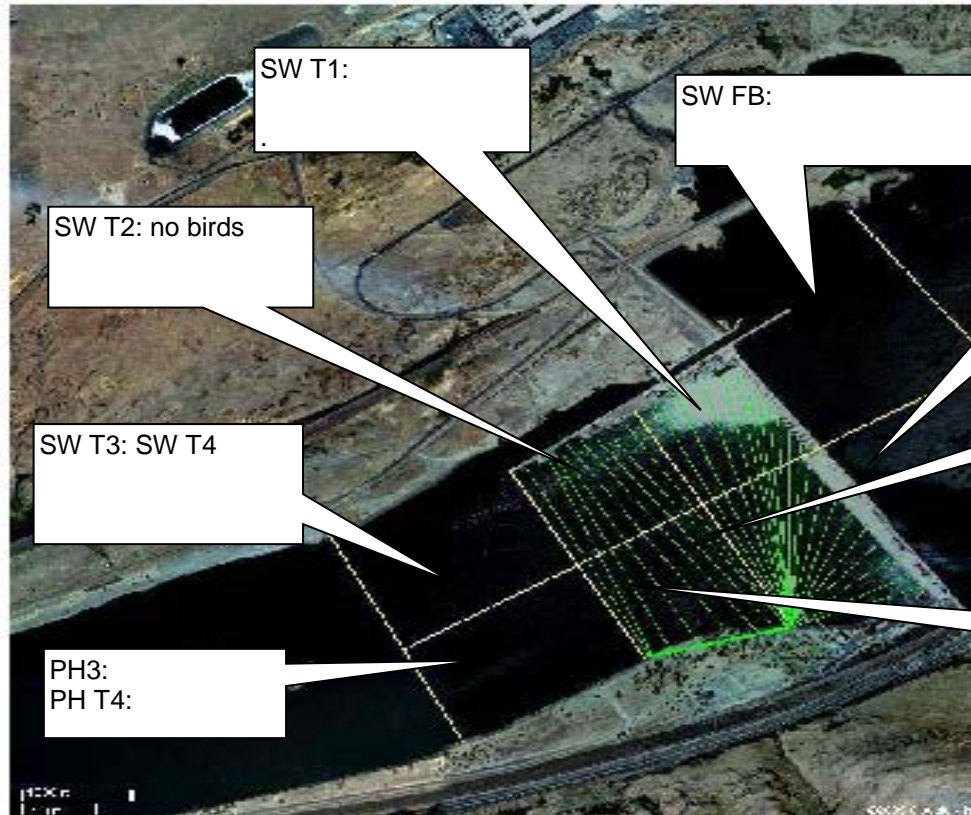
PIT tag detections ended on 11/29/12

One fish two fish red fish blue fish
Black fish blue fish old fish new fish
Some are red and some are blue. some are old and some are new.
Some are sad and some are glad. And some are very, very bad.
Why are they sad and glad and bad? I dont know. Go ask your dad.
Some are thin and some are fat. The fat one has a yellow hat.
From there to here, from here to there, funny things everywhere.
Here are some who like to run. They run for fun in the hot, hot sun
Oh me! Oh my!
Oh me! Oh my!
What alot of funny things go by.
Some have two feet and some have four.
Some have six feet and some have more.
Where do they come from?
I cant say.
But I bet they have come a long, long way.
We see them come.
We see them go.
Some are fast.
And some are slow.
Some are high.
And some are low
Not one of them is like another.
Don't as us why.
Go ask your mother.

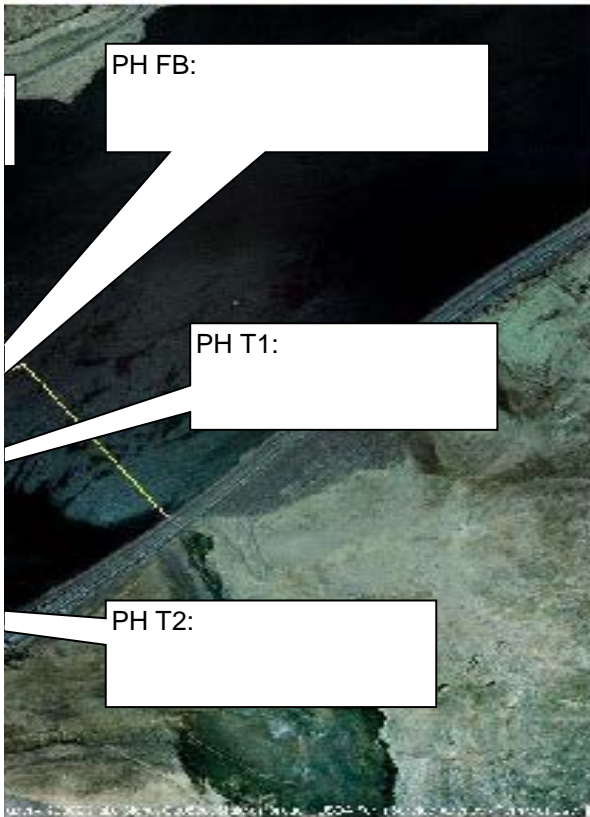
JDA Fishway Temperatures			
	min	max	avg
N ladder entrance			
N ladder exit			
S ladder entrance			
S ladder exit			



Methods: Planned



zones 2010



John Day:

	Temp:	Secchi:	Fallbacks:
Sun			
Mon	42	6.0	
Tues	40	5.0	
Wed	42	6.0	
Thur	42	6.0	
Fri	42	6.0	
Sat	42	5.5	
AVG:	41.7	5.8	AVG: #DIV/0!
			MAX: #DIV/0!
			MIN: #DIV/0!

	NE1	NE2	S.Ent	SE1	N.Ent	JBS Diff	Bay1	Bay19
Sun					OOS			
Sun					OOS			
Mon	8.1	8.0	1.1	10.0	OOS	4.5	1.6	1.5
Mon					OOS			
Tues	8.2	8.0	1.2	10.0	OOS	4.6	1.8	1.7
Tues					OOS			
Wed	8.0	8.0	1.2	9.4	OOS	OOS	1.8	1.5
Wed					OOS			
Thur	8.4	8.2	1.1	10.1	OOS	OOS	1.8	1.5
Thur					OOS			
Fri	8.0	8.0	1.4	9.7	OOS	OOS	1.8	1.4
Fri					OOS			
Sat	8.2	8.2	1.3	9.6	OOS	1.8	1.6	
Sat					OOS			
AVG:	8.2	8.1	1.2	9.8	#DIV/0!	3.6	1.7	1.5