

## FISHWAY STATUS REPORT - JOHN DAY DAM

Date: 12/30/2023

Inspection Period: 12/24/2023 thru 12/30/2023



**US Army Corps  
of Engineers**  
Portland District

JD/WC Project-Fisheries  
P.O. Box 823  
Rufus, Oregon 97050  
Phone: 541-739-1061

All JD Fishways are inspected twice per day during fish passage season, Mar. 1 - Nov. 30.  
Additional and frequent monitoring, of the PLC displays in SMF Fisheries Office, as necessary.

| John Day Dam                        | Inspection OOC | Criteria Limit | Total Number of Inspections: 7 |     |         | Temperature: 45.2 F | Secchi: 6.0 Ft. |
|-------------------------------------|----------------|----------------|--------------------------------|-----|---------|---------------------|-----------------|
| <b>NORTH FISHWAY</b>                |                |                |                                |     |         |                     |                 |
| Exit differential                   | 0              | ≤ 0.5'         |                                |     |         |                     |                 |
| Exit Control weirs                  | 0              | High setting   |                                |     |         |                     |                 |
| Count station differential          | 0              | ≤ 0.3'         |                                |     |         |                     |                 |
| Entrance differential               | 0              | 1.0' - 2.0'    | AVG (Ft.)                      | 1.5 |         |                     |                 |
| <b>SOUTH FISHWAY</b>                |                |                |                                |     |         |                     |                 |
| Exit differential                   | 0              | ≤ 0.5'         |                                |     |         |                     |                 |
| Exit Control weirs                  | 0              | Mid setting    |                                |     |         |                     |                 |
| Count station differential          | 0              | ≤ 0.3'         |                                |     |         |                     |                 |
| Weir crest depth (US gauge)         | 0              | 1.0' ± 0.1'    |                                |     |         |                     |                 |
| South entrance differential         | 0              | 1.0' - 2.0'    | AVG (Ft.)                      | OOS |         |                     |                 |
| Entrance weir SE1                   | 0              | depth (≥ 8')   | AVG (Ft.)                      | OOS |         |                     |                 |
| Collection channel velocity         | 0              | 1.5 - 4 fps    | AVG (Ft.)                      | OOS |         |                     |                 |
| N. Entrance PH(Bay 19)differential  | 0              | 1.0' - 2.0'    | AVG (Ft.)                      | OOS |         |                     |                 |
| Entrance weir NE1                   | 0              | depth (≥ 8')   | AVG (Ft.)                      | OOS |         |                     |                 |
| Entrance weir NE2                   | 0              | depth (≥ 8')   | AVG (Ft.)                      | OOS |         |                     |                 |
| <b>JUVENILE PASSAGE</b>             |                |                |                                |     |         |                     |                 |
| Forebay/bypass conduit differential | 0              | 4.0' - 5.0'    | AVG (Ft.)                      | 4.6 |         |                     |                 |
| Submersible traveling screens       | 0              | Removed        |                                |     |         |                     |                 |
| Turbine trashrack drawdown          | 0              | <1.5', wkly    |                                |     |         |                     |                 |
| Vert barrier screen drawdown        | 0              | <1.2', wkly    |                                |     |         |                     |                 |
| Spill volume                        | 0              | per FPP        | Avg (kcfs)                     | 0.0 | Avg (%) | 0.0                 |                 |
| Spill pattern                       | 0              | per FPP        |                                |     |         |                     |                 |
| Turbine Unit Priority               | 0              | per FPP        |                                |     |         |                     |                 |
| Turbine 1% Efficiency               | 0              | per FPP        |                                |     |         |                     |                 |

## Fisheries Related Operations

### **Smolt Monitoring Operations:**

Smolt Monitoring Facility concluded the 2023 sampling season on September 15th.  
The SMF was dewatered for winter maintenance on 11/30/23 (scheduled RTS: 2/26/24)

### **Adult Ladder Operations:**

NFL is operating in criteria. SFL Dewatered 12/04/23 (Scheduled RTS: 2/28/24), SFL CC Dewatered 12/11, SE1 Triangle Dewatered 12/13, AWS Channel Dewatered 12/14  
SFL turbine #2 RTS 3/20 @ reduced RPMs (55 RPMs) to prolong the repairs. SFL turbine #3 OOS (Philadelphia gear inspected on 2/22 and recommended FOOS - See 23JDA03) -  
Funding awarded (RTS-Unknown). FOG's removed

### **Project Operations:**

Current outages: MU4 (ETR: 2/1/24), MU7 (ETR: 7/31/28)  
Spillbay Outages: #1-missing brake/motor (ETR Unknown), #6 and #10-operates in manual/local mode only (ETR: Unknown)  
Weekly Average Tailwater TDG: 98.9

### **Maintenance:**

NFL AWS pump #4 is OOS with an unknown RTS date (see 21JDA02). NFL AWS pump #2 has a failed RTD sensor that keeps it from reading an accurate temperature on the lower bearing (occurred 4/22/23). Therefore, there is no overheat fail safe and it is being run as a last on first off pump (the pump will need to be unstacked to repair the sensor). The repair date is unknown.

Calibration: All gauges within the 0.3' criteria.

### **Bird Data:**

Foraging gull numbers have increased this week (~24/inspection), foraging grebes decreased this week (~1/inspection), and foraging cormorants increased this week (~2/inspection).

There are 5 pelicans hanging around Preacher's Island this week

21 of 125 avian lines down

### **Research:**

Four Peaks started ladder counts on 3/1/23 and will be performing year-round counts for 2023 (Day video 11/1/23 - 2/29/24).

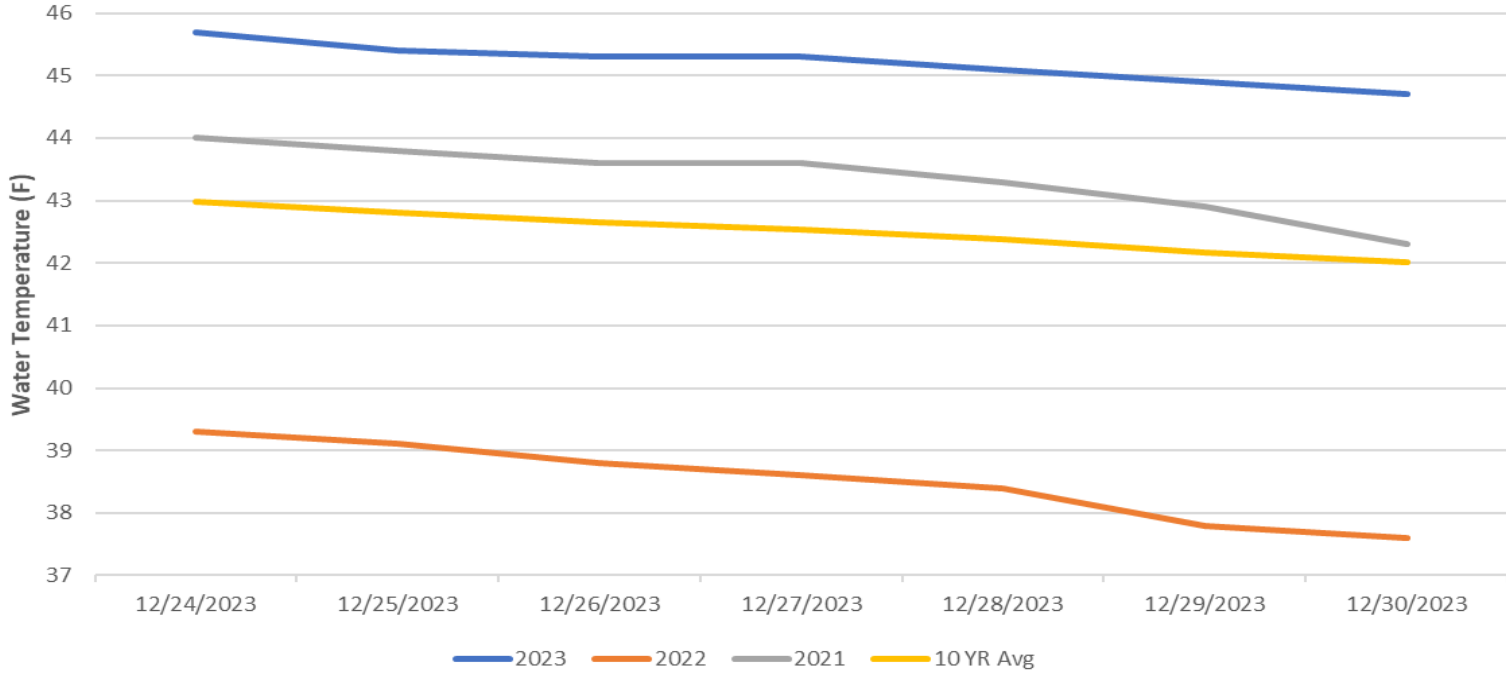
PSMFC smolt condition monitoring ended 9/15/23.

USDA hazing started on 04/16/23 and ended 07/31/23.

WDFW performing NPMP dam angling started 5/8/23 and ended 10/12/23.

CRITFC translocation ended on 9/6/23.

### John Day Dam Water Temperature (F)



# JDA Collection Channel Velocity

FPP Criteria: 1.5–4.0 feet per second (2 fps optimum)

| Date | Measurement Location | Speed (ft/sec) | SFL Turbine RPMs (1,2,3) | Bay 19 TW (ft) |
|------|----------------------|----------------|--------------------------|----------------|
| OOS  | OOS                  | OOS            | OOS                      | OOS            |
| OOS  | OOS                  | OOS            | OOS                      | OOS            |
| OOS  | OOS                  | OOS            | OOS                      | OOS            |
| OOS  | OOS                  | OOS            | OOS                      | OOS            |
| OOS  | OOS                  | OOS            | OOS                      | OOS            |
| OOS  | OOS                  | OOS            | OOS                      | OOS            |

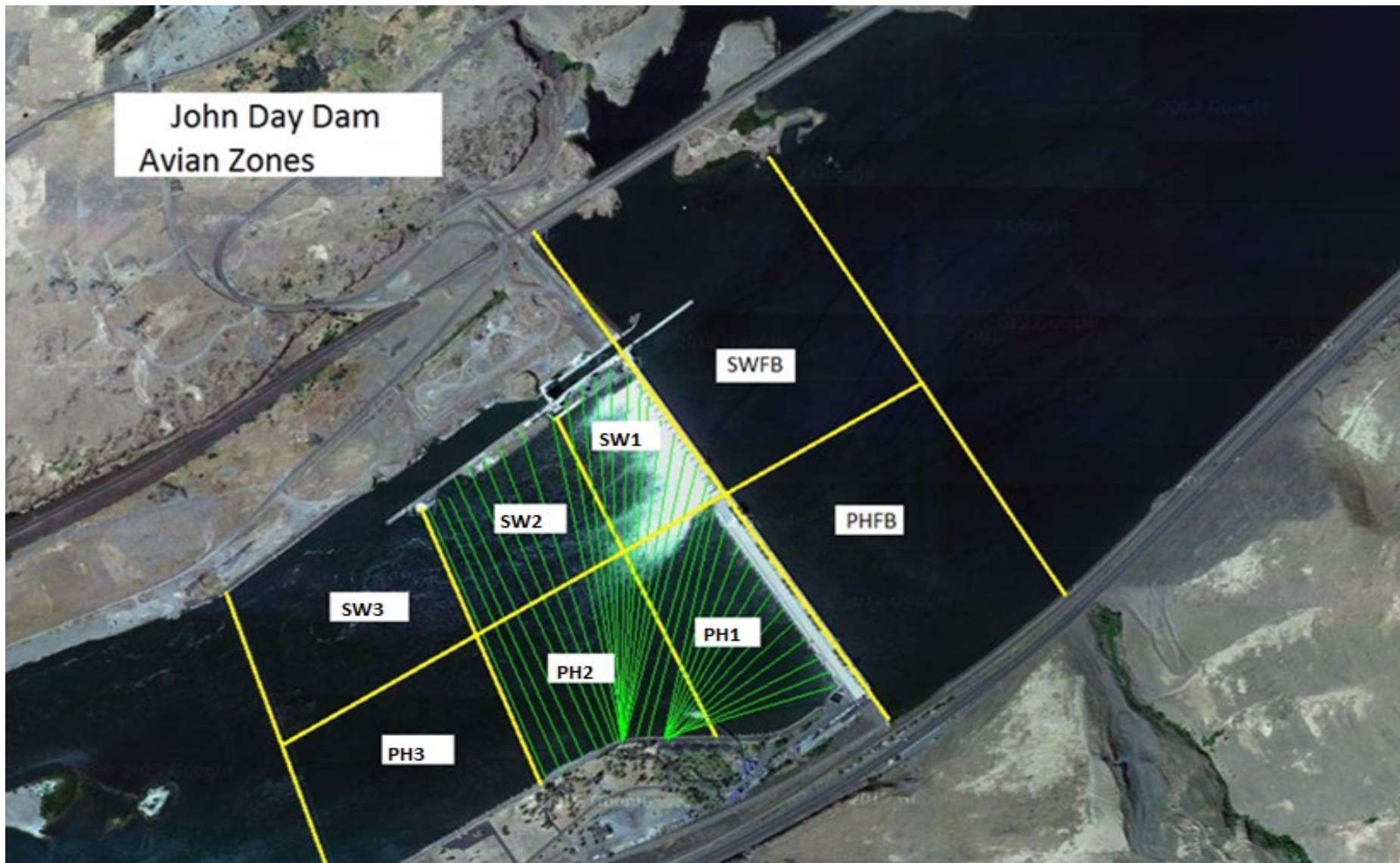
|                                  |     |
|----------------------------------|-----|
| Average Weekly Velocity (ft/sec) | OOS |
|----------------------------------|-----|

## JOHN DAY WEEKLY AVERAGES

|                  | South Fish Ladder |            |            |            |            | NFL        | JBS           | Spill             |            |             |
|------------------|-------------------|------------|------------|------------|------------|------------|---------------|-------------------|------------|-------------|
|                  | SE1 (Ft)          | S.Ent (Ft) | NE1 (Ft)   | NE2 (Ft)   | Bay19 (Ft) | N.Ent (Ft) | JBS Diff (Ft) | Spill Vol. (kcfs) | Spill (%)  | # Spillbays |
| <b>Sunday</b>    | OOS               | OOS        | OOS        | OOS        | OOS        | 1.5        | 4.5           | 0.0               | 0.0        | 0           |
| <b>Monday</b>    | OOS               | OOS        | OOS        | OOS        | OOS        | 1.4        | 4.6           | 0.0               | 0.0        | 0           |
| <b>Tuesday</b>   | OOS               | OOS        | OOS        | OOS        | OOS        | 1.5        | 4.6           | 0.0               | 0.0        | 0           |
| <b>Wednesday</b> | OOS               | OOS        | OOS        | OOS        | OOS        | 1.5        | 4.6           | 0.0               | 0.0        | 0           |
| <b>Thursday</b>  | OOS               | OOS        | OOS        | OOS        | OOS        | 1.4        | 4.8           | 0.0               | 0.0        | 0           |
| <b>Friday</b>    | OOS               | OOS        | OOS        | OOS        | OOS        | 1.5        | 4.6           | 0.0               | 0.0        | 0           |
| <b>Saturday</b>  | OOS               | OOS        | OOS        | OOS        | OOS        | 1.5        | 4.6           | 0.0               | 0.0        | 0           |
| <b>AVG:</b>      | <b>OOS</b>        | <b>OOS</b> | <b>OOS</b> | <b>OOS</b> | <b>OOS</b> | <b>1.5</b> | <b>4.6</b>    | <b>0.0</b>        | <b>0.0</b> | <b>0.0</b>  |

|                  | Temp (F)    | Secchi (Ft) | Notes   |
|------------------|-------------|-------------|---|
| <b>Sunday</b>    | 45.7        | 6.0         | Starting 12/01/23 one inspection per day, SFL Fish Turbines shut off, SFL Dewatered on 12/4, SFL CC Dewatered 12/11, SE1 Triangle Dewtered 12/13, AWS Channel Dewatered 12/14 |
| <b>Monday</b>    | 45.4        | 6.0         |   |
| <b>Tuesday</b>   | 45.3        | 6.0         |   |
| <b>Wednesday</b> | 45.3        | 6.0         |   |
| <b>Thursday</b>  | 45.1        | 6.0         |   |
| <b>Friday</b>    | 44.9        | 6.0         |   |
| <b>Saturday</b>  | 44.7        | 6.0         |   |
| <b>AVG</b>       | <b>45.2</b> | <b>6.0</b>  |   |

John Day Dam  
Avian Zones



**JDA Bird Counts: 12/24/23 to 12/30/23**

F(1): Forage AM survey F(2): Forage PM Survey NF(1): Non-Forage AM Survey NF(2): Non-Forage PM Survey

| Date              | Zone | Gulls    |          |          |          | Cormorant |          |          |          | Caspian tern |          |          |          | White Pelican |          |          |          | Grebe    |          |          |           | Total     |
|-------------------|------|----------|----------|----------|----------|-----------|----------|----------|----------|--------------|----------|----------|----------|---------------|----------|----------|----------|----------|----------|----------|-----------|-----------|
|                   |      | F(1)     | F(2)     | NF(1)    | NF(2)    | F(1)      | F(2)     | NF(1)    | NF(2)    | F(1)         | F(2)     | NF(1)    | NF(2)    | F(1)          | F(2)     | NF(1)    | NF(2)    | F(1)     | F(2)     | NF(1)    | NF(2)     |           |
| 24-Dec            | PHFB | 0        | 0        | 0        | 0        | 0         | 0        | 0        | 0        | 0            | 0        | 0        | 0        | 0             | 0        | 0        | 0        | 0        | 0        | 0        | 0         | 0         |
| 24-Dec            | SWFB | 0        | 0        | 0        | 0        | 0         | 0        | 0        | 0        | 0            | 0        | 0        | 0        | 0             | 0        | 0        | 0        | 0        | 0        | 0        | 0         | 0         |
| 24-Dec            | PH1  | 0        | 0        | 0        | 0        | 0         | 0        | 0        | 0        | 0            | 0        | 0        | 0        | 0             | 0        | 0        | 0        | 0        | 0        | 0        | 0         | 0         |
| 24-Dec            | PH2  | 0        | 0        | 0        | 0        | 0         | 0        | 0        | 0        | 0            | 0        | 0        | 0        | 0             | 0        | 0        | 0        | 0        | 0        | 0        | 0         | 0         |
| 24-Dec            | PH3  | 0        | 0        | 0        | 0        | 0         | 0        | 0        | 0        | 0            | 0        | 0        | 0        | 0             | 0        | 0        | 0        | 0        | 0        | 0        | 0         | 0         |
| 24-Dec            | SW1  | 0        | 0        | 0        | 0        | 0         | 0        | 0        | 0        | 0            | 0        | 0        | 0        | 0             | 0        | 0        | 0        | 0        | 0        | 0        | 0         | 0         |
| 24-Dec            | SW2  | 0        | 0        | 0        | 0        | 0         | 0        | 0        | 0        | 0            | 0        | 0        | 0        | 0             | 0        | 0        | 0        | 0        | 0        | 0        | 0         | 0         |
| 24-Dec            | SW3  | 0        | 0        | 0        | 0        | 0         | 0        | 0        | 0        | 0            | 0        | 0        | 0        | 0             | 0        | 0        | 0        | 0        | 0        | 0        | 0         | 0         |
| <b>Avg/Survey</b> |      | <b>0</b> | <b>0</b> | <b>0</b> | <b>0</b> | <b>0</b>  | <b>0</b> | <b>0</b> | <b>0</b> | <b>0</b>     | <b>0</b> | <b>0</b> | <b>0</b> | <b>0</b>      | <b>0</b> | <b>0</b> | <b>0</b> | <b>0</b> | <b>0</b> | <b>0</b> | <b>0</b>  | <b>0</b>  |
| 25-Dec            | PHFB | 0        | 0        | 0        | 0        | 0         | 0        | 0        | 0        | 0            | 0        | 0        | 0        | 0             | 0        | 0        | 0        | 0        | 0        | 0        | 0         | 0         |
| 25-Dec            | SWFB | 0        | 0        | 0        | 0        | 0         | 0        | 0        | 0        | 0            | 0        | 0        | 0        | 0             | 0        | 0        | 0        | 0        | 0        | 0        | 0         | 0         |
| 25-Dec            | PH1  | 0        | 0        | 0        | 0        | 0         | 0        | 0        | 0        | 0            | 0        | 0        | 0        | 0             | 0        | 0        | 0        | 0        | 0        | 0        | 0         | 0         |
| 25-Dec            | PH2  | 0        | 0        | 0        | 0        | 0         | 0        | 0        | 0        | 0            | 0        | 0        | 0        | 0             | 0        | 0        | 0        | 0        | 0        | 0        | 0         | 0         |
| 25-Dec            | PH3  | 0        | 0        | 0        | 0        | 0         | 0        | 0        | 0        | 0            | 0        | 0        | 0        | 0             | 0        | 0        | 0        | 0        | 0        | 0        | 0         | 0         |
| 25-Dec            | SW1  | 0        | 0        | 0        | 0        | 0         | 0        | 0        | 0        | 0            | 0        | 0        | 0        | 0             | 0        | 0        | 0        | 0        | 0        | 0        | 0         | 0         |
| 25-Dec            | SW2  | 0        | 0        | 0        | 0        | 0         | 0        | 0        | 0        | 0            | 0        | 0        | 0        | 0             | 0        | 0        | 0        | 0        | 0        | 0        | 0         | 0         |
| 25-Dec            | SW3  | 0        | 0        | 0        | 0        | 0         | 0        | 0        | 0        | 0            | 0        | 0        | 0        | 0             | 0        | 0        | 0        | 0        | 0        | 0        | 0         | 0         |
| <b>Avg/Survey</b> |      | <b>0</b> | <b>0</b> | <b>0</b> | <b>0</b> | <b>0</b>  | <b>0</b> | <b>0</b> | <b>0</b> | <b>0</b>     | <b>0</b> | <b>0</b> | <b>0</b> | <b>0</b>      | <b>0</b> | <b>0</b> | <b>0</b> | <b>0</b> | <b>0</b> | <b>0</b> | <b>0</b>  | <b>0</b>  |
| 26-Dec            | PHFB | 0        | 0        | 0        | 0        | 1         | 0        | 0        | 0        | 0            | 0        | 0        | 0        | 0             | 0        | 0        | 0        | 0        | 0        | 0        | 0         | 1         |
| 26-Dec            | SWFB | 0        | 0        | 0        | 0        | 0         | 0        | 0        | 0        | 0            | 0        | 0        | 0        | 0             | 0        | 0        | 0        | 0        | 0        | 0        | 0         | 0         |
| 26-Dec            | PH1  | 5        | 0        | 0        | 0        | 1         | 0        | 0        | 0        | 0            | 0        | 0        | 0        | 0             | 0        | 0        | 0        | 0        | 0        | 0        | 0         | 6         |
| 26-Dec            | PH2  | 0        | 0        | 0        | 0        | 0         | 0        | 0        | 0        | 0            | 0        | 0        | 0        | 0             | 0        | 0        | 0        | 0        | 0        | 0        | 0         | 0         |
| 26-Dec            | PH3  | 0        | 0        | 0        | 0        | 0         | 0        | 0        | 0        | 0            | 0        | 0        | 0        | 5             | 0        | 0        | 0        | 0        | 0        | 0        | 0         | 5         |
| 26-Dec            | SW1  | 0        | 0        | 0        | 0        | 0         | 0        | 0        | 0        | 0            | 0        | 0        | 0        | 0             | 0        | 0        | 0        | 0        | 0        | 0        | 0         | 0         |
| 26-Dec            | SW2  | 0        | 0        | 0        | 0        | 0         | 0        | 29       | 0        | 0            | 0        | 0        | 0        | 0             | 0        | 0        | 0        | 0        | 0        | 0        | 0         | 29        |
| 26-Dec            | SW3  | 0        | 0        | 0        | 0        | 0         | 0        | 0        | 0        | 0            | 0        | 0        | 0        | 0             | 0        | 0        | 0        | 0        | 0        | 0        | 0         | 0         |
| <b>Avg/Survey</b> |      | <b>5</b> | <b>0</b> | <b>0</b> | <b>2</b> | <b>29</b> | <b>0</b> | <b>0</b> | <b>0</b> | <b>0</b>     | <b>0</b> | <b>0</b> | <b>5</b> | <b>0</b>      | <b>0</b> | <b>0</b> | <b>0</b> | <b>0</b> | <b>0</b> | <b>0</b> | <b>41</b> | <b>41</b> |
| 27-Dec            | PHFB | 0        | 0        | 0        | 0        | 0         | 0        | 5        | 0        | 0            | 0        | 0        | 0        | 0             | 0        | 0        | 1        | 0        | 0        | 0        | 0         | 6         |
| 27-Dec            | SWFB | 0        | 0        | 0        | 0        | 0         | 0        | 0        | 0        | 0            | 0        | 0        | 0        | 0             | 0        | 0        | 0        | 0        | 0        | 0        | 0         | 0         |
| 27-Dec            | PH1  | 8        | 0        | 0        | 0        | 0         | 0        | 0        | 0        | 0            | 0        | 0        | 0        | 0             | 0        | 0        | 0        | 0        | 0        | 0        | 0         | 8         |
| 27-Dec            | PH2  | 0        | 0        | 0        | 0        | 0         | 0        | 0        | 0        | 0            | 0        | 0        | 0        | 0             | 0        | 0        | 0        | 0        | 0        | 0        | 0         | 0         |
| 27-Dec            | PH3  | 0        | 0        | 0        | 0        | 0         | 0        | 0        | 0        | 0            | 0        | 0        | 0        | 0             | 0        | 0        | 0        | 0        | 0        | 0        | 0         | 0         |
| 27-Dec            | SW1  | 0        | 0        | 0        | 0        | 0         | 0        | 0        | 0        | 0            | 0        | 0        | 0        | 0             | 0        | 0        | 0        | 0        | 0        | 0        | 0         | 0         |
| 27-Dec            | SW2  | 0        | 0        | 0        | 0        | 0         | 0        | 44       | 0        | 0            | 0        | 0        | 0        | 0             | 0        | 0        | 0        | 0        | 0        | 0        | 0         | 44        |
| 27-Dec            | SW3  | 0        | 0        | 0        | 0        | 0         | 0        | 0        | 0        | 0            | 0        | 0        | 0        | 0             | 0        | 0        | 0        | 0        | 0        | 0        | 0         | 0         |
| <b>Avg/Survey</b> |      | <b>8</b> | <b>0</b> | <b>0</b> | <b>0</b> | <b>49</b> | <b>0</b> | <b>0</b> | <b>0</b> | <b>0</b>     | <b>0</b> | <b>0</b> | <b>0</b> | <b>0</b>      | <b>0</b> | <b>1</b> | <b>0</b> | <b>0</b> | <b>0</b> | <b>0</b> | <b>58</b> | <b>58</b> |

**JDA Bird Counts: 12/24/23 to 12/30/23**

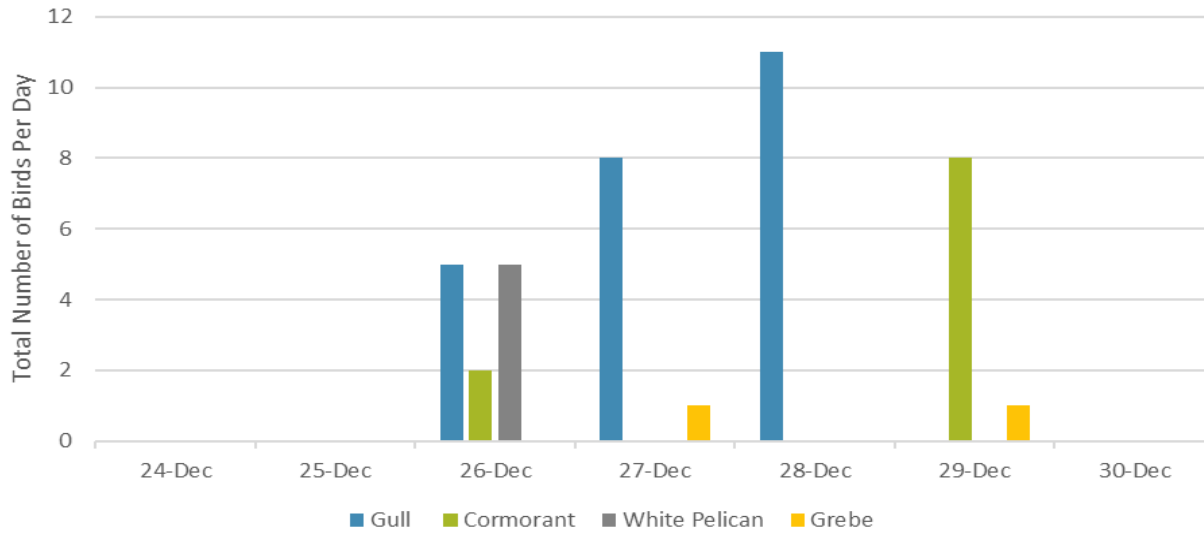
F(1): Forage AM survey    F(2): Forage PM Survey    NF(1): Non-Forage AM Survey    NF(2): Non-Forage PM Survey

| Date              | Zone | Gulls     |      |          |       | Cormorant |      |           |       | Caspian tern |      |          |       | White Pelican |      |          |       | Grebe    |      |          |       | Total     |
|-------------------|------|-----------|------|----------|-------|-----------|------|-----------|-------|--------------|------|----------|-------|---------------|------|----------|-------|----------|------|----------|-------|-----------|
|                   |      | F(1)      | F(2) | NF(1)    | NF(2) | F(1)      | F(2) | NF(1)     | NF(2) | F(1)         | F(2) | NF(1)    | NF(2) | F(1)          | F(2) | NF(1)    | NF(2) | F(1)     | F(2) | NF(1)    | NF(2) |           |
| 28-Dec            | PHFB | 0         | 0    | 0        | 0     | 0         | 0    | 63        | 0     | 0            | 0    | 0        | 0     | 0             | 0    | 0        | 0     | 0        | 0    | 0        | 0     | 63        |
| 28-Dec            | SWFB | 0         | 0    | 0        | 0     | 0         | 0    | 0         | 0     | 0            | 0    | 0        | 0     | 0             | 0    | 0        | 0     | 0        | 0    | 0        | 0     | 0         |
| 28-Dec            | PH1  | 11        | 0    | 0        | 0     | 0         | 0    | 0         | 0     | 0            | 0    | 0        | 0     | 0             | 0    | 0        | 0     | 0        | 0    | 0        | 0     | 11        |
| 28-Dec            | PH2  | 0         | 0    | 0        | 0     | 0         | 0    | 0         | 0     | 0            | 0    | 0        | 0     | 0             | 0    | 0        | 0     | 0        | 0    | 0        | 0     | 0         |
| 28-Dec            | PH3  | 0         | 0    | 0        | 0     | 0         | 0    | 0         | 0     | 0            | 0    | 0        | 0     | 0             | 0    | 0        | 0     | 0        | 0    | 0        | 0     | 0         |
| 28-Dec            | SW1  | 0         | 0    | 0        | 0     | 0         | 0    | 0         | 0     | 0            | 0    | 0        | 0     | 0             | 0    | 0        | 0     | 0        | 0    | 0        | 0     | 0         |
| 28-Dec            | SW2  | 0         | 0    | 0        | 0     | 0         | 0    | 0         | 0     | 0            | 0    | 0        | 0     | 0             | 0    | 0        | 0     | 0        | 0    | 0        | 0     | 0         |
| 28-Dec            | SW3  | 0         | 0    | 0        | 0     | 0         | 0    | 0         | 0     | 0            | 0    | 0        | 0     | 0             | 0    | 0        | 0     | 0        | 0    | 0        | 0     | 0         |
| <b>Avg/Survey</b> |      | <b>11</b> |      | <b>0</b> |       | <b>0</b>  |      | <b>63</b> |       | <b>0</b>     |      | <b>0</b> |       | <b>0</b>      |      | <b>0</b> |       | <b>0</b> |      | <b>0</b> |       | <b>74</b> |
| 29-Dec            | PHFB | 0         | 0    | 0        | 0     | 8         | 0    | 71        | 0     | 0            | 0    | 0        | 0     | 0             | 0    | 0        | 1     | 0        | 0    | 0        | 0     | 80        |
| 29-Dec            | SWFB | 0         | 0    | 0        | 0     | 0         | 0    | 0         | 0     | 0            | 0    | 0        | 0     | 0             | 0    | 0        | 0     | 0        | 0    | 0        | 0     | 0         |
| 29-Dec            | PH1  | 0         | 0    | 0        | 0     | 0         | 0    | 0         | 0     | 0            | 0    | 0        | 0     | 0             | 0    | 0        | 0     | 0        | 0    | 0        | 0     | 0         |
| 29-Dec            | PH2  | 0         | 0    | 0        | 0     | 0         | 0    | 0         | 0     | 0            | 0    | 0        | 0     | 0             | 0    | 0        | 0     | 0        | 0    | 0        | 0     | 0         |
| 29-Dec            | PH3  | 0         | 0    | 0        | 0     | 0         | 0    | 0         | 0     | 0            | 0    | 0        | 0     | 0             | 0    | 0        | 0     | 0        | 0    | 0        | 0     | 0         |
| 29-Dec            | SW1  | 0         | 0    | 0        | 0     | 0         | 0    | 0         | 0     | 0            | 0    | 0        | 0     | 0             | 0    | 0        | 0     | 0        | 0    | 0        | 0     | 0         |
| 29-Dec            | SW2  | 0         | 0    | 0        | 0     | 0         | 0    | 6         | 0     | 0            | 0    | 0        | 0     | 0             | 0    | 0        | 0     | 0        | 0    | 0        | 0     | 6         |
| 29-Dec            | SW3  | 0         | 0    | 0        | 0     | 0         | 0    | 0         | 0     | 0            | 0    | 0        | 0     | 0             | 0    | 0        | 0     | 0        | 0    | 0        | 0     | 0         |
| <b>Avg/Survey</b> |      | <b>0</b>  |      | <b>0</b> |       | <b>8</b>  |      | <b>77</b> |       | <b>0</b>     |      | <b>0</b> |       | <b>0</b>      |      | <b>0</b> |       | <b>1</b> |      | <b>0</b> |       | <b>86</b> |
| 30-Dec            | PHFB | 0         | 0    | 0        | 0     | 0         | 0    | 0         | 0     | 0            | 0    | 0        | 0     | 0             | 0    | 0        | 0     | 0        | 0    | 0        | 0     | 0         |
| 30-Dec            | SWFB | 0         | 0    | 0        | 0     | 0         | 0    | 0         | 0     | 0            | 0    | 0        | 0     | 0             | 0    | 0        | 0     | 0        | 0    | 0        | 0     | 0         |
| 30-Dec            | PH1  | 0         | 0    | 0        | 0     | 0         | 0    | 0         | 0     | 0            | 0    | 0        | 0     | 0             | 0    | 0        | 0     | 0        | 0    | 0        | 0     | 0         |
| 30-Dec            | PH2  | 0         | 0    | 0        | 0     | 0         | 0    | 0         | 0     | 0            | 0    | 0        | 0     | 0             | 0    | 0        | 0     | 0        | 0    | 0        | 0     | 0         |
| 30-Dec            | PH3  | 0         | 0    | 0        | 0     | 0         | 0    | 0         | 0     | 0            | 0    | 0        | 0     | 0             | 0    | 0        | 0     | 0        | 0    | 0        | 0     | 0         |
| 30-Dec            | SW1  | 0         | 0    | 0        | 0     | 0         | 0    | 0         | 0     | 0            | 0    | 0        | 0     | 0             | 0    | 0        | 0     | 0        | 0    | 0        | 0     | 0         |
| 30-Dec            | SW2  | 0         | 0    | 0        | 0     | 0         | 0    | 0         | 0     | 0            | 0    | 0        | 0     | 0             | 0    | 0        | 0     | 0        | 0    | 0        | 0     | 0         |
| 30-Dec            | SW3  | 0         | 0    | 0        | 0     | 0         | 0    | 0         | 0     | 0            | 0    | 0        | 0     | 0             | 0    | 0        | 0     | 0        | 0    | 0        | 0     | 0         |
| <b>Avg/Survey</b> |      | <b>0</b>  |      | <b>0</b> |       | <b>0</b>  |      | <b>0</b>  |       | <b>0</b>     |      | <b>0</b> |       | <b>0</b>      |      | <b>0</b> |       | <b>0</b> |      | <b>0</b> |       | <b>0</b>  |

| Totals              | Gulls     |          |           |            | Cormorant |          |          |          | Caspian tern |          |            |    | White Pelican |    |   |    | Grebe |  |  |  | Total |
|---------------------|-----------|----------|-----------|------------|-----------|----------|----------|----------|--------------|----------|------------|----|---------------|----|---|----|-------|--|--|--|-------|
|                     | F         | NF       | F         | NF         | F         | NF       | F        | NF       | F            | NF       | F          | NF | F             | NF | F | NF |       |  |  |  |       |
| <b>Weekly Total</b> | <b>24</b> | <b>0</b> | <b>10</b> | <b>218</b> | <b>0</b>  | <b>0</b> | <b>5</b> | <b>0</b> | <b>2</b>     | <b>0</b> | <b>259</b> |    |               |    |   |    |       |  |  |  |       |
| <b>Avg/Survey</b>   | <b>5</b>  | <b>0</b> | <b>2</b>  | <b>44</b>  | <b>0</b>  | <b>0</b> | <b>1</b> | <b>0</b> | <b>0</b>     | <b>0</b> | <b>52</b>  |    |               |    |   |    |       |  |  |  |       |



### Foraging Piscivorous Birds



### Non-Foraging Piscivorous Birds

