

FISHWAY STATUS REPORT - JOHN DAY DAM

Date: 12/23/2023

Inspection Period: 12/17/2023 thru 12/23/2023



**US Army Corps
of Engineers**
Portland District

JD/WC Project-Fisheries
P.O. Box 823
Rufus, Oregon 97050
Phone: 541-739-1061

All JD Fishways are inspected twice per day during fish passage season, Mar. 1 - Nov. 30.
Additional and frequent monitoring, of the PLC displays in SMF Fisheries Office, as necessary.

John Day Dam	Inspection OOC	Criteria Limit	Total Number of Inspections: 7			Temperature: 46.5 F	Secchi: 6.0 Ft.
NORTH FISHWAY							
Exit differential	0	≤ 0.5'					
Exit Control weirs	0	High setting					
Count station differential	0	≤ 0.3'					
Entrance differential	0	1.0' - 2.0'	AVG (Ft.)	1.5			
SOUTH FISHWAY							
Exit differential	0	≤ 0.5'					
Exit Control weirs	0	Mid setting					
Count station differential	0	≤ 0.3'					
Weir crest depth (US gauge)	0	1.0' ± 0.1'					
South entrance differential	0	1.0' - 2.0'	AVG (Ft.)	OOS			
Entrance weir SE1	0	depth (≥ 8')	AVG (Ft.)	OOS			
Collection channel velocity	0	1.5 - 4 fps	AVG (Ft.)	OOS			
N. Entrance PH(Bay 19)differential	0	1.0' - 2.0'	AVG (Ft.)	OOS			
Entrance weir NE1	0	depth (≥ 8')	AVG (Ft.)	OOS			
Entrance weir NE2	0	depth (≥ 8')	AVG (Ft.)	OOS			
JUVENILE PASSAGE							
Forebay/bypass conduit differential	0	4.0' - 5.0'	AVG (Ft.)	4.5			
Submersible traveling screens	0	Removing					
Turbine trashrack drawdown	0	<1.5', wkly					
Vert barrier screen drawdown	0	<1.2', wkly					
Spill volume	0	per FPP	Avg (kcfs)	0.0	Avg (%)	0.0	
Spill pattern	0	per FPP					
Turbine Unit Priority	0	per FPP					
Turbine 1% Efficiency	0	per FPP					

Fisheries Related Operations

Smolt Monitoring Operations:

Smolt Monitoring Facility concluded the 2023 sampling season on September 15th.
The SMF was dewatered for winter maintenance on 11/30/23 (scheduled RTS: 2/26/24)

Adult Ladder Operations:

NFL is operating in criteria. SFL Dewatered 12/04/23 (Scheduled RTS: 2/28/24), SFL CC Dewatered 12/11, SE1 Triangle Dewatered 12/13, AWS Channel Dewatered 12/14
SFL turbine #2 RTS 3/20 @ reduced RPMs (55 RPMs) to prolong the repairs. SFL turbine #3 OOS (Philadelphia gear inspected on 2/22 and recommended FOOS - See 23JDA03) -
Funding awarded (RTS-Unknown). FOG's removed

Project Operations:

Current outages: MU4 (ETR: 2/1/24), MU7 (ETR: 7/31/28)
Spillbay Outages: #1-missing brake/motor (ETR Unknown), #6 and #10-operates in manual/local mode only (ETR: Unknown)
Weekly Average Tailwater TDG: 98.9

Maintenance:

NFL AWS pump #4 is OOS with an unknown RTS date (see 21JDA02). NFL AWS pump #2 has a failed RTD sensor that keeps it from reading an accurate temperature on the lower bearing (occurred 4/22/23). Therefore, there is no overheat fail safe and it is being run as a last on first off pump (the pump will need to be unstacked to repair the sensor). The repair date is unknown.

Calibration: All gauges within the 0.3' criteria.

Bird Data:

Foraging gull numbers have decreased this week (~17/inspection), foraging grebes decreased this week (~1/inspection), and foraging cormorants decreased this week (~1/inspection).

There are 5 pelicans hanging around Preacher's Island this week
21 of 125 avian lines down

Research:

Four Peaks started ladder counts on 3/1/23 and will be performing year-round counts for 2023 (Day video 11/1/23 - 2/29/24).

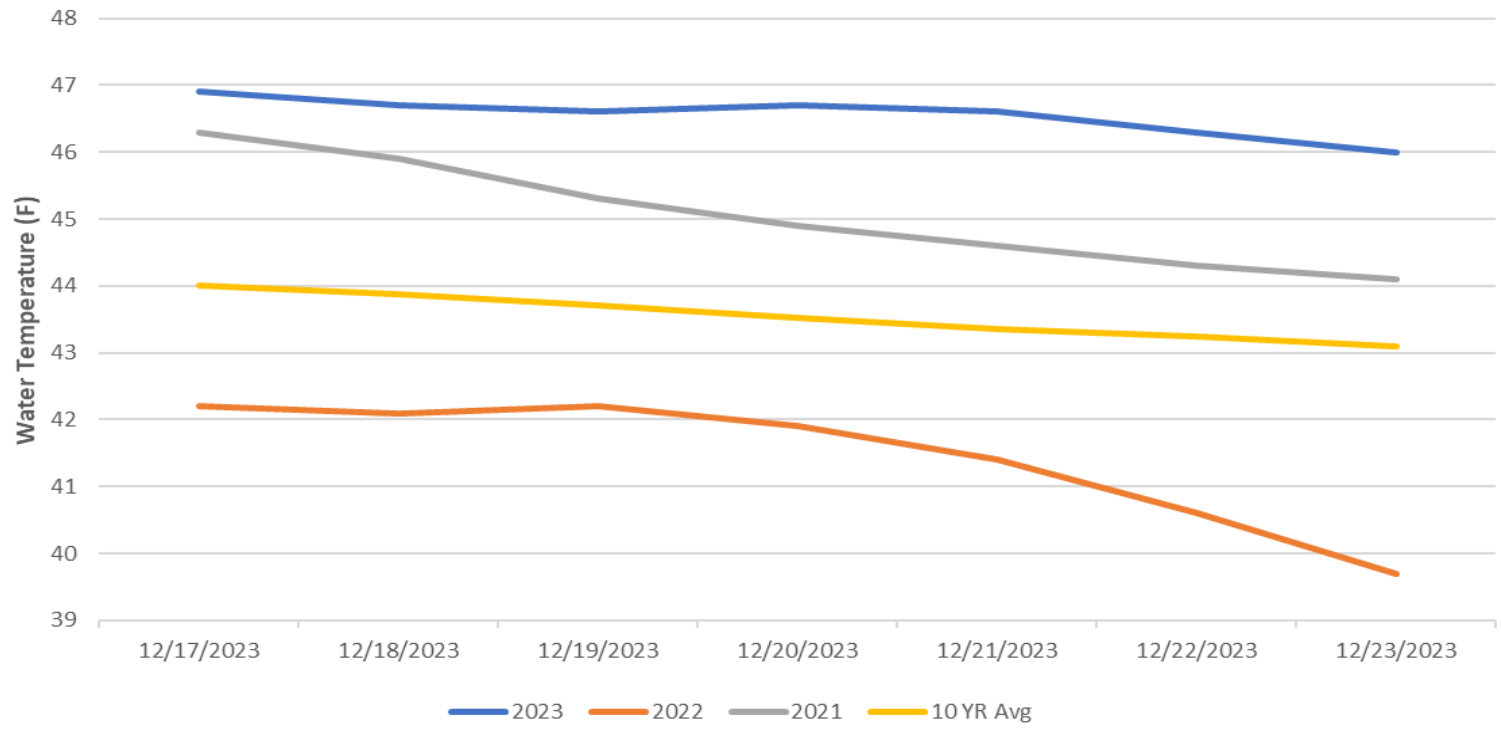
PSMFC smolt condition monitoring ended 9/15/23.

USDA hazing started on 04/16/23 and ended 07/31/23.

WDFWP performing NPMP dam angling started 5/8/23 and ended 10/12/23.

CRITFC translocation ended on 9/6/23.

John Day Dam Water Temperature (F)



JDA Collection Channel Velocity

FPP Criteria: 1.5–4.0 feet per second (2 fps optimum)

Date	Measurement Location	Speed (ft/sec)	SFL Turbine RPMs (1,2,3)	Bay 19 TW (ft)
OOS	OOS	OOS	OOS	OOS
OOS	OOS	OOS	OOS	OOS
OOS	OOS	OOS	OOS	OOS
OOS	OOS	OOS	OOS	OOS
OOS	OOS	OOS	OOS	OOS
OOS	OOS	OOS	OOS	OOS

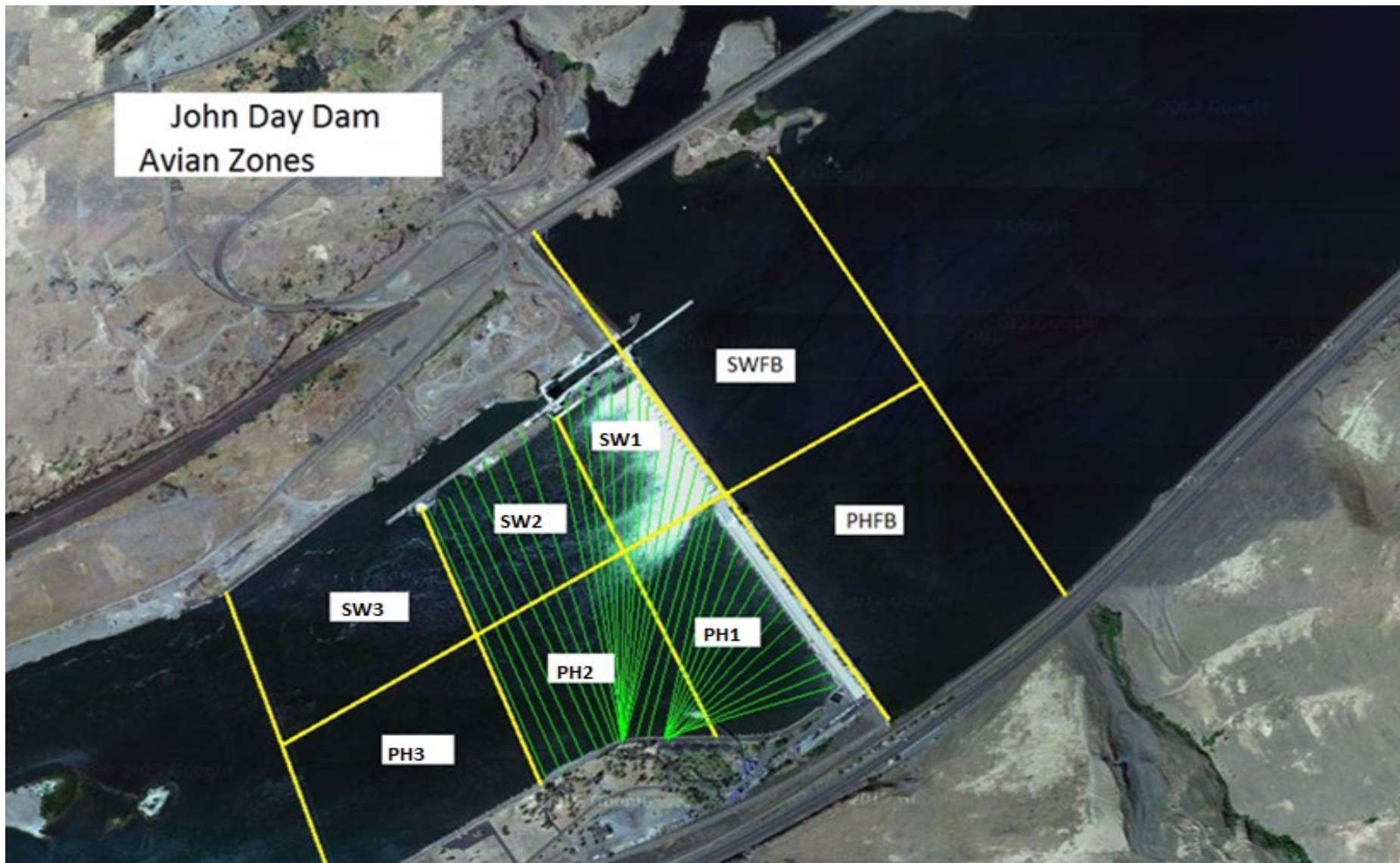
Average Weekly Velocity (ft/sec)	OOS
----------------------------------	-----

JOHN DAY WEEKLY AVERAGES

	South Fish Ladder					NFL	JBS	Spill		
	SE1 (Ft)	S.Ent (Ft)	NE1 (Ft)	NE2 (Ft)	Bay19 (Ft)	N.Ent (Ft)	JBS Diff (Ft)	Spill Vol. (kcfs)	Spill (%)	# Spillbays
Sunday	OOS	OOS	OOS	OOS	OOS	1.5	4.5	0.0	0.0	0
Monday	OOS	OOS	OOS	OOS	OOS	1.6	4.5	0.0	0.0	0
Tuesday	OOS	OOS	OOS	OOS	OOS	1.4	4.6	0.0	0.0	0
Wednesday	OOS	OOS	OOS	OOS	OOS	1.4	4.6	0.0	0.0	0
Thursday	OOS	OOS	OOS	OOS	OOS	1.6	4.6	0.0	0.0	0
Friday	OOS	OOS	OOS	OOS	OOS	1.5	4.7	0.0	0.0	0
Saturday	OOS	OOS	OOS	OOS	OOS	1.4	4.1	0.0	0.0	0
AVG:	OOS	OOS	OOS	OOS	OOS	1.5	4.5	0.0	0.0	0.0

	Temp (F)	Secchi (Ft)	Notes
Sunday	46.9	6.0	Starting 12/01/23 one inspection per day, SFL Fish Turbines shut off, SFL Dewatered on 12/4, SFL CC Dewatered 12/11, SE1 Triangle Dewtered 12/13, AWS Channel Dewatered 12/14
Monday	46.7	6.0	
Tuesday	46.6	6.0	
Wednesday	46.7	6.0	
Thursday	46.6	6.0	
Friday	46.3	6.0	
Saturday	46.0	6.0	
AVG	46.5	6.0	

John Day Dam
Avian Zones



JDA Bird Counts: 12/17/23 to 12/23/23

F(1): Forage AM survey F(2): Forage PM Survey NF(1): Non-Forage AM Survey NF(2): Non-Forage PM Survey

Date	Zone	Gulls				Cormorant				Caspian tern				White Pelican				Grebe				Total
		F(1)	F(2)	NF(1)	NF(2)	F(1)	F(2)	NF(1)	NF(2)	F(1)	F(2)	NF(1)	NF(2)	F(1)	F(2)	NF(1)	NF(2)	F(1)	F(2)	NF(1)	NF(2)	
17-Dec	PHFB	0	0	0	0	0	0	0	0	0	0	0	0	0	0	0	0	0	0	0	0	0
17-Dec	SWFB	0	0	0	0	0	0	0	0	0	0	0	0	0	0	0	0	0	0	0	0	0
17-Dec	PH1	0	0	0	0	0	0	0	0	0	0	0	0	0	0	0	0	0	0	0	0	0
17-Dec	PH2	0	0	0	0	0	0	0	0	0	0	0	0	0	0	0	0	0	0	0	0	0
17-Dec	PH3	0	0	0	0	0	0	0	0	0	0	0	0	0	0	0	0	0	0	0	0	0
17-Dec	SW1	0	0	0	0	0	0	0	0	0	0	0	0	0	0	0	0	0	0	0	0	0
17-Dec	SW2	0	0	0	0	0	0	0	0	0	0	0	0	0	0	0	0	0	0	0	0	0
17-Dec	SW3	0	0	0	0	0	0	0	0	0	0	0	0	0	0	0	0	0	0	0	0	0
Avg/Survey		0		0		0		0		0		0		0		0		0		0		0
18-Dec	PHFB	0	0	0	0	0	0	0	0	0	0	0	0	0	0	0	3	0	0	0		3
18-Dec	SWFB	0	0	0	0	0	0	0	0	0	0	0	0	0	0	0	0	0	0	0		0
18-Dec	PH1	20	0	10	0	5	0	0	0	0	0	0	0	0	0	0	0	0	0	0		35
18-Dec	PH2	0	0	0	0	0	0	0	0	0	0	0	0	0	0	0	0	0	0	0		0
18-Dec	PH3	0	0	0	0	0	0	0	0	0	0	0	0	0	0	0	0	0	0	0		0
18-Dec	SW1	0	0	0	0	0	0	0	0	0	0	0	0	0	0	0	0	0	0	0		0
18-Dec	SW2	0	0	0	0	0	0	50	0	0	0	0	0	0	0	0	0	0	0	0		50
18-Dec	SW3	0	0	0	0	0	0	0	0	0	0	0	0	0	0	0	0	0	0	0		0
Avg/Survey		20		10		5		50		0		0		0		3		0		88		88
19-Dec	PHFB	0	0	0	0	0	0	0	0	0	0	0	0	0	0	0	3	0	0	0		3
19-Dec	SWFB	0	0	0	0	0	0	0	0	0	0	0	0	0	0	0	1	0	0	0		1
19-Dec	PH1	19	0	0	0	0	0	0	0	0	0	0	0	0	0	0	0	0	0	0		19
19-Dec	PH2	0	0	0	0	0	0	0	0	0	0	0	0	0	0	0	0	0	0	0		0
19-Dec	PH3	0	0	0	0	0	0	0	0	0	0	0	0	0	0	0	0	0	0	0		0
19-Dec	SW1	0	0	0	0	0	0	0	0	0	0	0	0	0	0	0	0	0	0	0		0
19-Dec	SW2	0	0	0	0	0	0	33	0	0	0	0	0	0	0	0	0	0	0	0		33
19-Dec	SW3	0	0	0	0	0	0	11	0	0	0	0	0	0	0	0	0	0	0	0		11
Avg/Survey		19		0		0		44		0		0		0		4		0		67		67
20-Dec	PHFB	0	0	10	0	0	0	0	0	0	0	0	0	0	0	0	0	0	0	0		10
20-Dec	SWFB	0	0	0	0	0	0	0	0	0	0	0	0	0	0	0	0	0	0	0		0
20-Dec	PH1	20	0	25	0	1	0	0	0	0	0	0	0	0	0	0	0	0	0	0		46
20-Dec	PH2	0	0	0	0	0	0	0	0	0	0	0	0	0	0	0	0	0	0	0		0
20-Dec	PH3	0	0	0	0	0	0	0	0	0	0	0	0	0	0	0	0	0	0	0		0
20-Dec	SW1	0	0	0	0	0	0	0	0	0	0	0	0	0	0	0	0	0	0	0		0
20-Dec	SW2	0	0	0	0	0	0	40	0	0	0	0	0	0	0	0	0	0	0	0		40
20-Dec	SW3	0	0	0	0	0	0	1	0	0	0	0	0	0	0	0	0	0	0	0		1
Avg/Survey		20		35		1		41		0		0		0		0		0		97		97

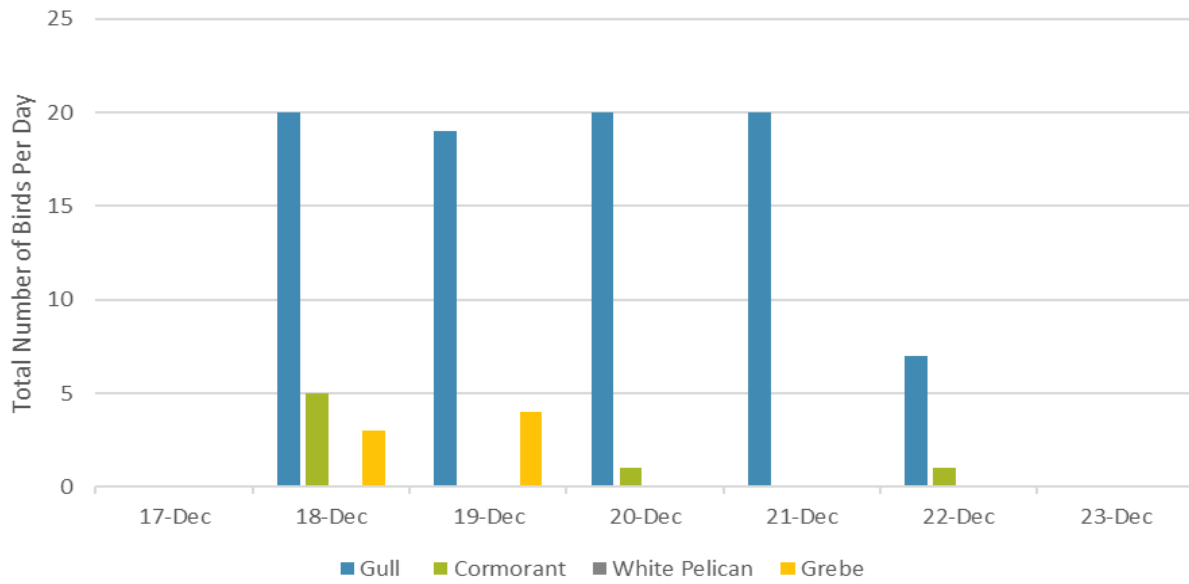
JDA Bird Counts: 12/17/23 to 12/23/23

F(1): Forage AM survey F(2): Forage PM Survey NF(1): Non-Forage AM Survey NF(2): Non-Forage PM Survey

Date	Zone	Gulls				Cormorant				Caspian tern				White Pelican				Grebe				Total
		F(1)	F(2)	NF(1)	NF(2)	F(1)	F(2)	NF(1)	NF(2)	F(1)	F(2)	NF(1)	NF(2)	F(1)	F(2)	NF(1)	NF(2)	F(1)	F(2)	NF(1)	NF(2)	
21-Dec	PHFB	0	0	75	0	0	0	0	0	0	0	0	0	0	0	0	0	0	0	0	0	75
21-Dec	SWFB	0	0	0	0	0	0	0	0	0	0	0	0	0	0	0	0	0	0	0	0	0
21-Dec	PH1	20	0	0	0	0	0	0	0	0	0	0	0	0	0	0	0	0	0	0	0	20
21-Dec	PH2	0	0	0	0	0	0	0	0	0	0	0	0	0	0	0	0	0	0	0	0	0
21-Dec	PH3	0	0	0	0	0	0	0	0	0	0	0	0	0	0	0	0	0	0	0	0	0
21-Dec	SW1	0	0	0	0	0	0	0	0	0	0	0	0	0	0	0	0	0	0	0	0	0
21-Dec	SW2	0	0	20	0	0	0	0	0	0	0	0	0	0	0	0	0	0	0	0	0	20
21-Dec	SW3	0	0	25	0	0	0	0	0	0	0	0	0	0	0	0	0	0	0	0	0	25
Avg/Survey		20		120		0		0		0		0		0		0		0		0		140
22-Dec	PHFB	0	0	51	0	1	0	0	0	0	0	0	0	0	0	0	0	0	0	0	0	52
22-Dec	SWFB	0	0	0	0	0	0	0	0	0	0	0	0	0	0	0	0	0	0	0	0	0
22-Dec	PH1	7	0	0	0	0	0	0	0	0	0	0	0	0	0	0	0	0	0	0	0	7
22-Dec	PH2	0	0	0	0	0	0	0	0	0	0	0	0	0	0	0	0	0	0	0	0	0
22-Dec	PH3	0	0	0	0	0	0	0	0	0	0	0	0	0	0	0	0	0	0	0	0	0
22-Dec	SW1	0	0	0	0	0	0	0	0	0	0	0	0	0	0	0	0	0	0	0	0	0
22-Dec	SW2	0	0	0	0	0	0	17	0	0	0	0	0	0	0	0	0	0	0	0	0	17
22-Dec	SW3	0	0	0	0	0	0	0	0	0	0	0	0	0	0	0	0	0	0	0	0	0
Avg/Survey		7		51		1		17		0		0		0		0		0		0		76
23-Dec	PHFB	0	0	0	0	0	0	0	0	0	0	0	0	0	0	0	0	0	0	0	0	0
23-Dec	SWFB	0	0	0	0	0	0	0	0	0	0	0	0	0	0	0	0	0	0	0	0	0
23-Dec	PH1	0	0	0	0	0	0	0	0	0	0	0	0	0	0	0	0	0	0	0	0	0
23-Dec	PH2	0	0	0	0	0	0	0	0	0	0	0	0	0	0	0	0	0	0	0	0	0
23-Dec	PH3	0	0	0	0	0	0	0	0	0	0	0	0	0	0	0	0	0	0	0	0	0
23-Dec	SW1	0	0	0	0	0	0	0	0	0	0	0	0	0	0	0	0	0	0	0	0	0
23-Dec	SW2	0	0	0	0	0	0	0	0	0	0	0	0	0	0	0	0	0	0	0	0	0
23-Dec	SW3	0	0	0	0	0	0	0	0	0	0	0	0	0	0	0	0	0	0	0	0	0
Avg/Survey		0		0		0		0		0		0		0		0		0		0		0

Totals	Gulls				Cormorant				Caspian tern				White Pelican				Grebe				Total
	F	NF	F	NF	F	NF	F	NF	F	NF	F	NF	F	NF	F	NF					
Weekly Total	86	216	7	152	0	0	0	0	0	0	0	0	0	7	0	468					
Avg/Survey	17	43	1	30	0	0	0	0	0	0	0	0	1	0	94						

Foraging Piscivorous Birds



Non-Foraging Piscivorous Birds

