

FISHWAY STATUS REPORT - JOHN DAY DAM

Date: 12/2/2023

Inspection Period: 11/26/2023 thru 12/2/2023



**US Army Corps
of Engineers**
Portland District

JD/WC Project-Fisheries
P.O. Box 823
Rufus, Oregon 97050
Phone: 541-739-1061

All JD Fishways are inspected twice per day during fish passage season, Mar. 1 - Nov. 30.
Additional and frequent monitoring, of the PLC displays in SMF Fisheries Office, as necessary.

John Day Dam	Inspection OOC	Criteria Limit	Total Number of Inspections: 7				Temperature: 48.4 F	Secchi: 6.0 Ft.
NORTH FISHWAY								
Exit differential	0	≤ 0.5'						
Exit Control weirs	0	High setting						
Count station differential	0	≤ 0.3'						
Entrance differential	0	1.0' - 2.0'	AVG (Ft.)	1.5				
SOUTH FISHWAY								
Exit differential	0	≤ 0.5'						
Exit Control weirs	0	Mid setting						
Count station differential	0	≤ 0.3'						
Weir crest depth (US gauge)	0	1.0' ± 0.1'						
South entrance differential	0	1.0' - 2.0'	AVG (Ft.)	OOS				
Entrance weir SE1	0	depth (≥ 8')	AVG (Ft.)	OOS				
Collection channel velocity	0	1.5 - 4 fps	AVG (Ft.)	OOS				
N. Entrance PH(Bay 19)differential	0	1.0' - 2.0'	AVG (Ft.)	OOS				
Entrance weir NE1	0	depth (≥ 8')	AVG (Ft.)	OOS				
Entrance weir NE2	0	depth (≥ 8')	AVG (Ft.)	OOS				
JUVENILE PASSAGE								
Forebay/bypass conduit differential	0	4.0' - 5.0'	AVG (Ft.)	4.5				
Submersible traveling screens	0	visual inspect						
Turbine trashrack drawdown	0	<1.5', wkly						
Vert barrier screen drawdown	0	<1.2', wkly						
Spill volume	0	per FPP	Avg (kcfs)	0.0	Avg (%)	0.0		
Spill pattern	0	per FPP						
Turbine Unit Priority	0	per FPP						
Turbine 1% Efficiency	0	per FPP						

Fisheries Related Operations

Smolt Monitoring Operations:

Smolt Monitoring Facility concluded the 2023 sampling season on September 15th.
The SMF was dewatered for winter maintenance on 11/30/23 (scheduled RTS: 2/26/23)

Adult Ladder Operations:

NFL is operating in criteria. SFL Dewatered 12/04/23 (Scheduled RTS: 2/28/23)
SFL turbine #2 RTS 3/20 @ reduced RPMs (55 RPMs) to prolong the repairs. SFL turbine #3 OOS (Philadelphia gear inspected on 2/22 and recommended FOOS - See 23JDA03) - Funding awarded (RTS-Unknown). FOG's removed

Project Operations:

Current outages: MU4 (ETR: 1/1/24), MU7 (ETR: 7/31/28), MU8 (ETR 12/1/23), MU15 (ETR: 12/6/23)
Spillbay Outages: #1-missing brake/motor (ETR Unknown), #6 and #10-operates in manual/local mode only (ETR: Unknown)
From Aug. 15 - Nov. 30, spillbay #2 will be open 1-stop (approximately 1.6 kcfs), during daylight hours, for NFL adult fish attraction.
Weekly Average Tailwater TDG: 98.2

Maintenance:

NFL AWS pump #4 is OOS with an unknown RTS date (see 21JDA02). NFL AWS pump #2 has a failed RTD sensor that keeps it from reading an accurate temperature on the lower bearing (occurred 4/22/23). Therefore, there is no overheat fail safe and it is being run as a last on first off pump (the pump will need to be unstacked to repair the sensor). The repair date is unknown.
Calibration: All gauges within the 0.3' criteria.

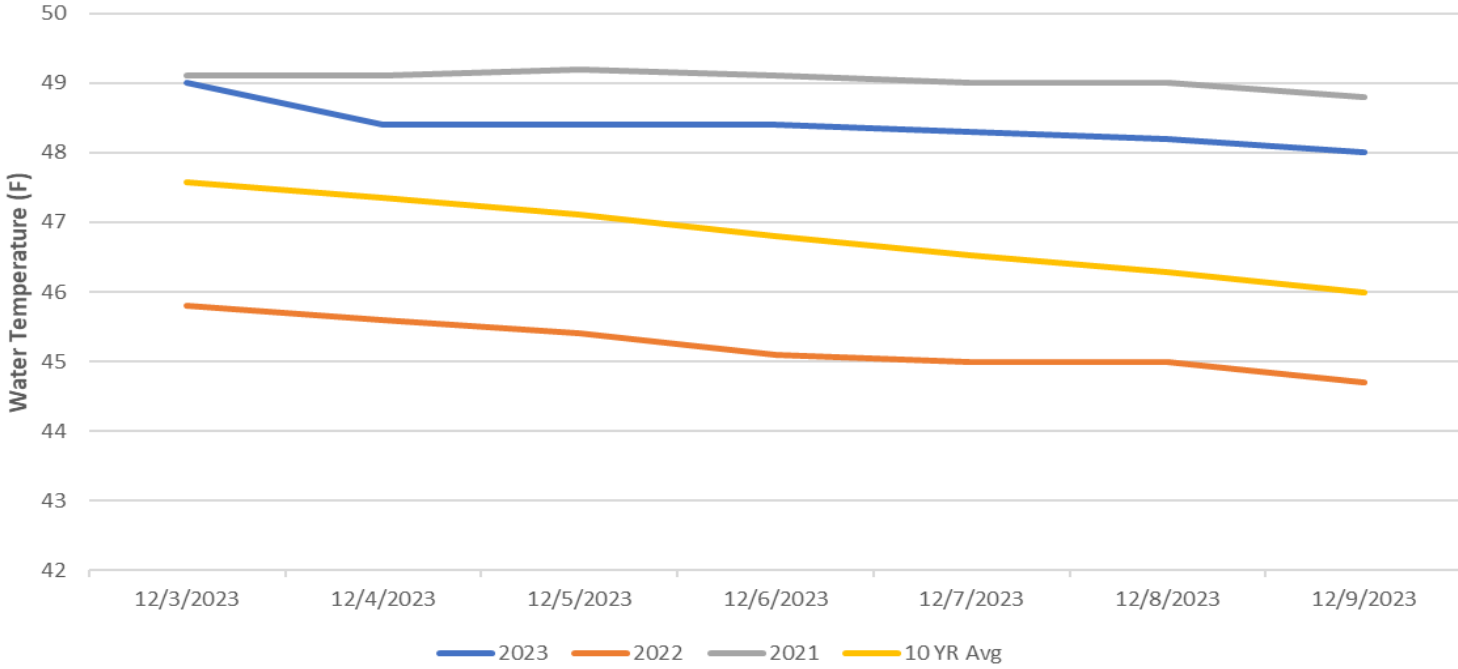
Bird Data:

Foraging gull numbers have decreased this week (~21/inspection), foraging grebes decreased this week (~3/inspection), and foraging cormorants remained steady this week (~1/inspection).
There are 5 pelicans hanging around Preacher's Island this week
21 of 125 avian lines down

Research:

Four Peaks started ladder counts on 3/1/23 and will be performing year-round counts for 2023 (Day video 11/1/23 - 2/29/24).
PSMFC smolt condition monitoring ended 9/15/23.
USDA hazing started on 04/16/23 and ended 07/31/23.
WDFW performing NPMP dam angling started 5/8/23 and ended 10/12/23.
CRITFC translocation ended on 9/6/23.

John Day Dam Water Temperature (F)



JDA Collection Channel Velocity

FPP Criteria: 1.5–4.0 feet per second (2 fps optimum)

Date	Measurement Location	Speed (ft/sec)	SFL Turbine RPMs (1,2,3)	Bay 19 TW (ft)
OOS	OOS	OOS	OOS	OOS
OOS	OOS	OOS	OOS	OOS
OOS	OOS	OOS	OOS	OOS
OOS	OOS	OOS	OOS	OOS
OOS	OOS	OOS	OOS	OOS
OOS	OOS	OOS	OOS	OOS

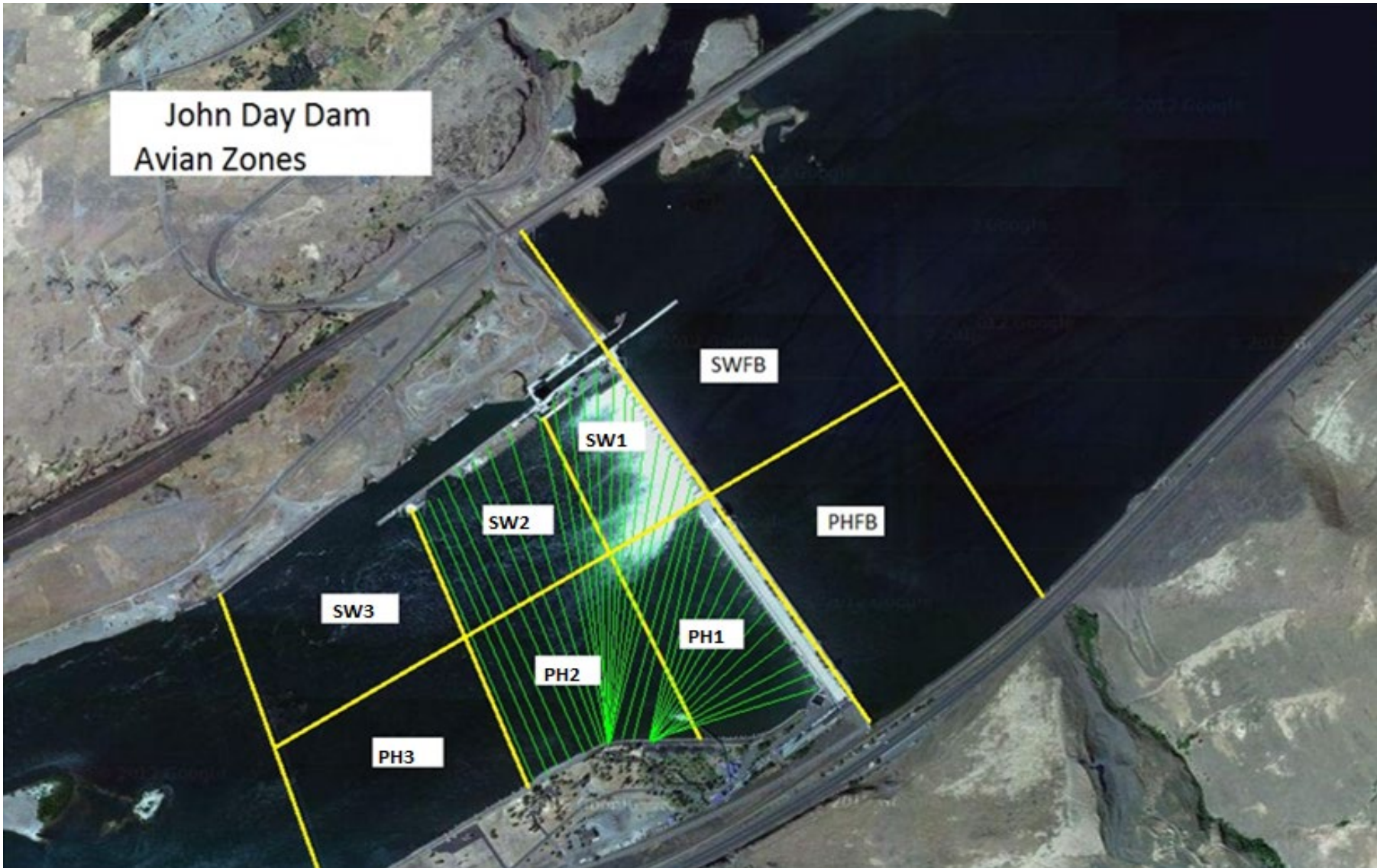
Average Weekly Velocity (ft/sec)	OOS
----------------------------------	-----

JOHN DAY WEEKLY AVERAGES

	South Fish Ladder					NFL	JBS	Spill		
	SE1 (Ft)	S.Ent (Ft)	NE1 (Ft)	NE2 (Ft)	Bay19 (Ft)	N.Ent (Ft)	JBS Diff (Ft)	Spill Vol. (kcfs)	Spill (%)	# Spillbays
Sunday	OOS	OOS	OOS	OOS	OOS	1.5	4.0	0.0	0.0	0
Monday	OOS	OOS	OOS	OOS	OOS	1.5	4.7	0.0	0.0	0
Tuesday	OOS	OOS	OOS	OOS	OOS	1.7	4.6	0.0	0.0	0
Wednesday	OOS	OOS	OOS	OOS	OOS	1.5	4.5	0.0	0.0	0
Thursday	OOS	OOS	OOS	OOS	OOS	1.6	4.6	0.0	0.0	0
Friday	OOS	OOS	OOS	OOS	OOS	1.6	4.7	0.0	0.0	0
Saturday	OOS	OOS	OOS	OOS	OOS	1.3	4.7	0.0	0.0	0
AVG:	OOS	OOS	OOS	OOS	OOS	1.5	4.5	0.0	0.0	0.0

	Temp (F)	Secchi (Ft)	Notes
Sunday	49.0	6.0	Starting 12/01/23 one inspection per day, SFL Fish Turbines shut off, SFL Dewatered on 12/4
Monday	48.4	6.0	
Tuesday	48.4	6.0	
Wednesday	48.4	6.0	
Thursday	48.3	6.0	
Friday	48.2	6.0	
Saturday	48.0	6.0	
AVG	48.4	6.0	

John Day Dam
Avian Zones



JDA Bird Counts: 12/3/23 to 12/9/23

NF(1): Non-Forage AM Survey NF(2): Non-Forage PM Survey

Date	Zone	Gulls		Cormorant				Caspian tern				White Pelican				Grebe				Total		
		F(1)	F(2)	NF(1)	NF(2)	F(1)	F(2)	NF(1)	NF(2)	F(1)	F(2)	NF(1)	NF(2)	F(1)	F(2)	NF(1)	NF(2)	F(1)	F(2)		NF(1)	NF(2)
3-Dec	PHFB	0	0	0	0	0	0	0	0	0	0	0	0	0	0	0	0	0	0	0	0	0
3-Dec	SWFB	0	0	0	0	0	0	0	0	0	0	0	0	0	0	0	0	0	0	0	0	0
3-Dec	PH1	0	0	0	0	0	0	0	0	0	0	0	0	0	0	0	0	0	0	0	0	0
3-Dec	PH2	0	0	0	0	0	0	0	0	0	0	0	0	0	0	0	0	0	0	0	0	0
3-Dec	PH3	0	0	0	0	0	0	0	0	0	0	0	0	0	0	0	0	0	0	0	0	0
3-Dec	SW1	0	0	0	0	0	0	0	0	0	0	0	0	0	0	0	0	0	0	0	0	0
3-Dec	SW2	0	0	0	0	0	0	0	0	0	0	0	0	0	0	0	0	0	0	0	0	0
3-Dec	SW3	0	0	0	0	0	0	0	0	0	0	0	0	0	0	0	0	0	0	0	0	0
Avg/Survey		0		0		0		0		0		0		0		0		0		0		0
4-Dec	PHFB	0	0	0	0	0	0	0	0	0	0	0	0	0	0	0	0	0	0	0	0	0
4-Dec	SWFB	0	0	0	0	0	0	0	0	0	0	0	0	0	0	0	0	0	0	0	0	0
4-Dec	PH1	20	0	0	0	0	0	0	0	0	0	0	0	0	0	0	0	0	0	0	0	20
4-Dec	PH2	20	0	0	0	0	0	0	0	0	0	0	0	0	0	0	0	0	0	0	0	20
4-Dec	PH3	0	0	0	0	0	0	0	0	0	0	0	0	0	0	0	0	0	0	0	0	0
4-Dec	SW1	0	0	0	0	0	0	0	0	0	0	0	0	0	0	0	0	0	0	0	0	0
4-Dec	SW2	0	0	0	0	0	0	25	0	0	0	0	0	0	0	0	0	0	0	0	0	25
4-Dec	SW3	0	0	0	0	0	0	0	0	0	0	0	0	0	0	0	0	0	0	0	0	0
Avg/Survey		40		0		0		25		0		0		0		0		0		0		65
5-Dec	PHFB	0	0	0	0	0	0	12	0	0	0	0	0	0	0	0	3	0	0	0	0	15
5-Dec	SWFB	0	0	0	0	0	0	0	0	0	0	0	0	0	0	0	0	0	0	0	0	0
5-Dec	PH1	10	0	0	0	0	0	0	0	0	0	0	0	0	0	0	0	0	0	0	0	10
5-Dec	PH2	5	0	0	0	0	0	0	0	0	0	0	0	0	0	0	0	0	0	0	0	5
5-Dec	PH3	0	0	0	0	0	0	0	0	0	0	0	0	0	0	0	0	0	0	0	0	0
5-Dec	SW1	0	0	0	0	5	0	0	0	0	0	0	0	0	0	0	0	0	0	0	0	5
5-Dec	SW2	0	0	0	0	0	0	9	0	0	0	0	0	0	0	0	0	0	0	0	0	9
5-Dec	SW3	0	0	6	0	0	0	9	0	0	0	0	0	0	0	0	0	0	0	0	0	15
Avg/Survey		15		6		5		30		0		0		0		0		3		0		59
6-Dec	PHFB	0	0	0	0	0	0	2	0	0	0	0	0	0	0	0	5	0	0	0	0	7
6-Dec	SWFB	0	0	0	0	0	0	0	0	0	0	0	0	0	0	0	0	0	0	0	0	0
6-Dec	PH1	10	0	0	0	0	0	0	0	0	0	0	0	0	0	0	0	0	0	0	0	10
6-Dec	PH2	5	0	0	0	0	0	0	0	0	0	0	0	0	0	0	0	0	0	0	0	5
6-Dec	PH3	0	0	0	0	0	0	0	0	0	0	0	0	0	3	0	0	0	0	0	0	3
6-Dec	SW1	0	0	0	0	0	0	0	0	0	0	0	0	0	0	0	0	0	0	0	0	0
6-Dec	SW2	0	0	0	0	0	0	12	0	0	0	0	0	0	0	0	0	0	0	0	0	12
6-Dec	SW3	0	0	0	0	0	0	0	0	0	0	0	0	0	0	0	0	0	0	0	0	0
Avg/Survey		15		0		0		14		0		0		0		3		5		0		37

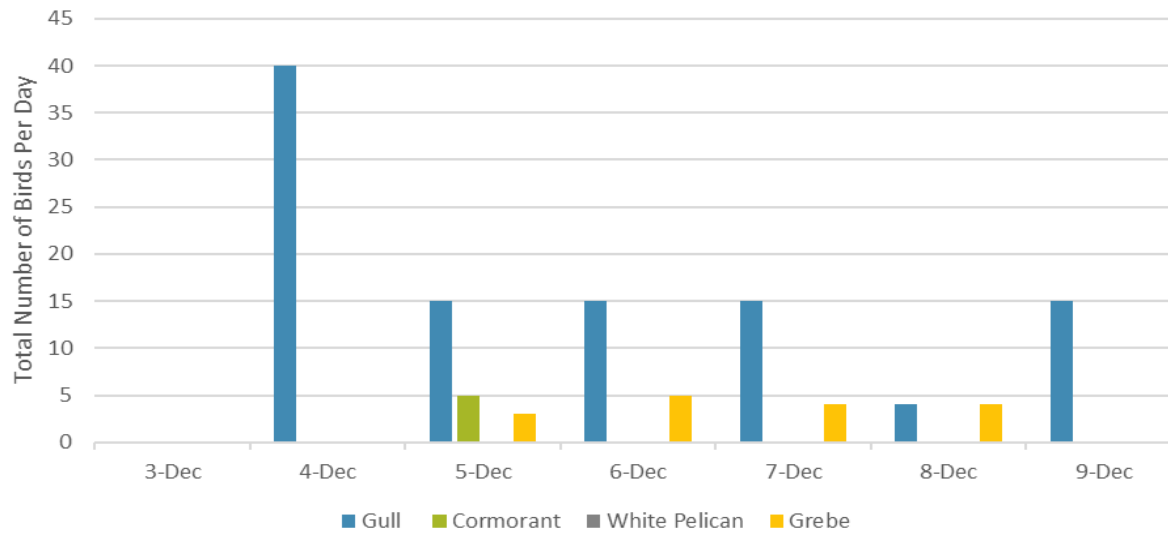
JDA Bird Counts: 12/3/23 to 12/9/23

NF(1): Non-Forage AM Survey NF(2): Non-Forage PM Survey

Date	Zone	Gulls		Cormorant				Caspian tern				White Pelican				Grebe				Total		
		F(1)	F(2)	NF(1)	NF(2)	F(1)	F(2)	NF(1)	NF(2)	F(1)	F(2)	NF(1)	NF(2)	F(1)	F(2)	NF(1)	NF(2)	F(1)	F(2)		NF(1)	NF(2)
7-Dec	PHFB	0	0	152	0	0	0	9	0	0	0	0	0	0	0	0	0	4	0	0	0	165
7-Dec	SWFB	0	0	0	0	0	0	0	0	0	0	0	0	0	0	0	0	0	0	0	0	0
7-Dec	PH1	15	0	3	0	0	0	0	0	0	0	0	0	0	0	0	0	0	0	0	0	18
7-Dec	PH2	0	0	0	0	0	0	0	0	0	0	0	0	0	0	0	0	0	0	0	0	0
7-Dec	PH3	0	0	0	0	0	0	0	0	0	0	0	0	0	0	0	0	0	0	0	0	0
7-Dec	SW1	0	0	0	0	0	0	0	0	0	0	0	0	0	0	0	0	0	0	0	0	0
7-Dec	SW2	0	0	0	0	0	0	10	0	0	0	0	0	0	0	0	0	0	0	0	0	10
7-Dec	SW3	0	0	0	0	0	0	7	0	0	0	0	0	0	0	0	0	0	0	0	0	7
Avg/Survey		15		155	0			26	0	0			0	0			4	0			200	
8-Dec	PHFB	0	0	174	0	0	0	0	0	0	0	0	0	0	0	0	0	4	0	0	0	178
8-Dec	SWFB	0	0	0	0	0	0	0	0	0	0	0	0	0	0	0	0	0	0	0	0	0
8-Dec	PH1	4	0	0	0	0	0	0	0	0	0	0	0	0	0	0	0	0	0	0	0	4
8-Dec	PH2	0	0	0	0	0	0	0	0	0	0	0	0	0	0	0	0	0	0	0	0	0
8-Dec	PH3	0	0	0	0	0	0	0	0	0	0	0	0	0	0	0	0	0	0	0	0	0
8-Dec	SW1	0	0	0	0	0	0	0	0	0	0	0	0	0	0	0	0	0	0	0	0	0
8-Dec	SW2	0	0	0	0	0	0	33	0	0	0	0	0	0	0	0	0	0	0	0	0	33
8-Dec	SW3	0	0	0	0	0	0	0	0	0	0	0	0	0	0	0	0	0	0	0	0	0
Avg/Survey		4		174	0			33	0	0			0	0			4	0			215	
9-Dec	PHFB	0	0	0	0	0	0	1	0	0	0	0	0	0	0	0	0	0	0	0	0	1
9-Dec	SWFB	0	0	113	0	0	0	0	0	0	0	0	0	0	0	0	0	0	0	0	0	113
9-Dec	PH1	15	0	0	0	0	0	0	0	0	0	0	0	0	0	0	0	0	0	0	0	15
9-Dec	PH2	0	0	0	0	0	0	23	0	0	0	0	0	0	0	0	0	0	0	0	0	23
9-Dec	PH3	0	0	0	0	0	0	0	0	0	0	0	0	0	0	0	0	0	0	0	0	0
9-Dec	SW1	0	0	0	0	0	0	0	0	0	0	0	0	0	0	0	0	0	0	0	0	0
9-Dec	SW2	0	0	0	0	0	0	0	0	0	0	0	0	0	0	0	0	0	0	0	0	0
9-Dec	SW3	0	0	0	0	0	0	0	0	0	0	0	0	0	0	0	0	0	0	0	0	0
Avg/Survey		15		113	0			24	0	0			0	0			0	0			152	

Totals	Gulls		Cormorant		Caspian tern		White Pelican		Grebe		Total
	F	NF	F	NF	F	NF	F	NF	F	NF	
Weekly Total	104	448	5	152	0	0	0	3	16	0	728
Avg/Survey	21	90	1	30	0	0	0	1	3	0	146

Foraging Piscivorous Birds



Non-Foraging Piscivorous Birds

