

FISHWAY STATUS REPORT - JOHN DAY DAM

Date: 10/14/2023

Inspection Period: 10/8/2023 thru 10/14/2023



**US Army Corps
of Engineers**
Portland District

JD/WC Project-Fisheries
P.O. Box 823
Rufus, Oregon 97050
Phone: 541-739-1061

All JD Fishways are inspected twice per day during fish passage season, Mar. 1 - Nov. 30.
Additional and frequent monitoring, of the PLC displays in SMF Fisheries Office, as necessary.

John Day Dam	Inspection OOC	Criteria Limit	Total Number of Inspections: 14			Temperature:	64.5 F
						Secchi:	6.0 Ft.
NORTH FISHWAY							
Exit differential	0	≤ 0.5'					
Exit Control weirs	0	High setting					
Count station differential	0	≤ 0.3'					
Entrance differential	0	1.0' - 2.0'	AVG (Ft.)	1.6			
SOUTH FISHWAY							
Exit differential	0	≤ 0.5'					
Exit Control weirs	0	Mid setting					
Count station differential	0	≤ 0.3'					
Weir crest depth (US gauge)	0	1.0' ± 0.1'					
South entrance differential	0	1.0' - 2.0'	AVG (Ft.)	1.4			
Entrance weir SE1	0	depth (≥ 8')	AVG (Ft.)	8.1			
Collection channel velocity	0	1.5 - 4 fps	AVG (Ft.)	2.56			
N. Entrance PH(Bay 19)differential	0	1.0' - 2.0'	AVG (Ft.)	1.6			
Entrance weir NE1	0	depth (≥ 8')	AVG (Ft.)	9.2			
Entrance weir NE2	0	depth (≥ 8')	AVG (Ft.)	9.2			
JUVENILE PASSAGE							
Forebay/bypass conduit differential	0	4.0' - 5.0'	AVG (Ft.)	4.6			
Submersible traveling screens	0	visual inspect	next inspection 10/23-10/26				
Turbine trashrack drawdown	0	<1.5', wkly					
Vert barrier screen drawdown	0	<1.2', wkly					
Spill volume	0	per FPP	Avg (kcfs)	1.6	Avg (%)	2.0	
Spill pattern	0	per FPP					
Turbine Unit Priority	0	per FPP					
Turbine 1% Efficiency	0	per FPP					

Fisheries Related Operations

Smolt Monitoring Operations:

Smolt Monitoring Facility concluded the 2023 sampling season on September 15th.

Adult Ladder Operations:

NFL is operating in criteria.

SFL turbine #2 RTS 3/20 @ reduced RPMs (55 RPMs) to prolong the repairs. SFL turbine #3 OOS (Philadelphia gear inspected on 2/22 and recommended FOOS - See 23JDA03) - Funding awarded (RTS-Unknown). FOG's removed

Project Operations:

Current outages: MU4 (ETR: 11/2/23), MU5 (ETR: 10/26/23), MU6 (ETR: 10/26/23), MU7 (ETR: 7/31/28), MU8 (ETR: 10/26/23), MU10 (ETR: 11/15/23), MU15 (ETR: 11/30/23)

Spillbay Outages: #1-missing brake/motor (ETR Unknown), #6 and #10-operates in manual/local mode only (ETR: Unknown)

From Aug. 15 - Nov. 30, spillbay #2 will be open 1-stop (approximately 1.6 kcfs), during daylight hours, for NFL adult fish attraction.

Weekly Average Tailwater TDG: 100.34

Maintenance:

NFL AWS pump #4 is OOS with an unknown RTS date (see 21JDA02). NFL AWS pump #2 has a failed RTD sensor that keeps it from reading an accurate temperature on the lower bearing (occurred 4/22/23). Therefore, there is no overheat fail safe and it is being run as a last on first off pump (the pump will need to be unstacked to repair the sensor). The repair date is unknown.

Calibration: All gauges within the 0.3' criteria.

Bird Data:

Decrease in pelican foraging within the tailrace this week with zero sightings, foraging gull numbers have increased steady this week (~41/inspection), foraging grebes increased this week (~42/inspection), and foraging cormorants stayed steady this week (~2/inspection).

There are ~17 pelicans hanging around Preacher's Island

20 of 125 avian lines down

Research:

Four Peaks started ladder counts on 3/1/23 and will be performing year-round counts for 2023 (Day video 11/1/23 - 2/29/24)

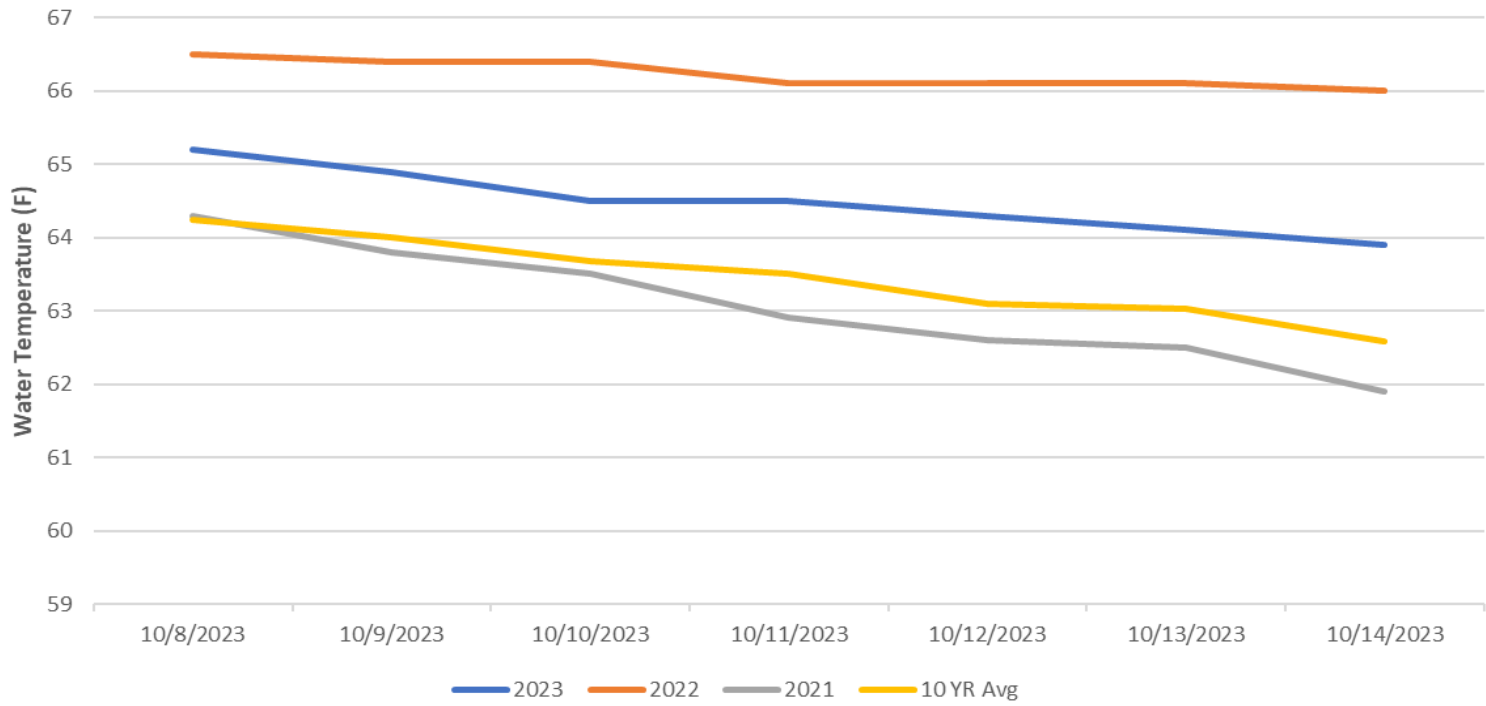
PSMFC smolt condition monitoring ended 9/15/23.

USDA hazing started on 04/16/23 and ended 07/31/23

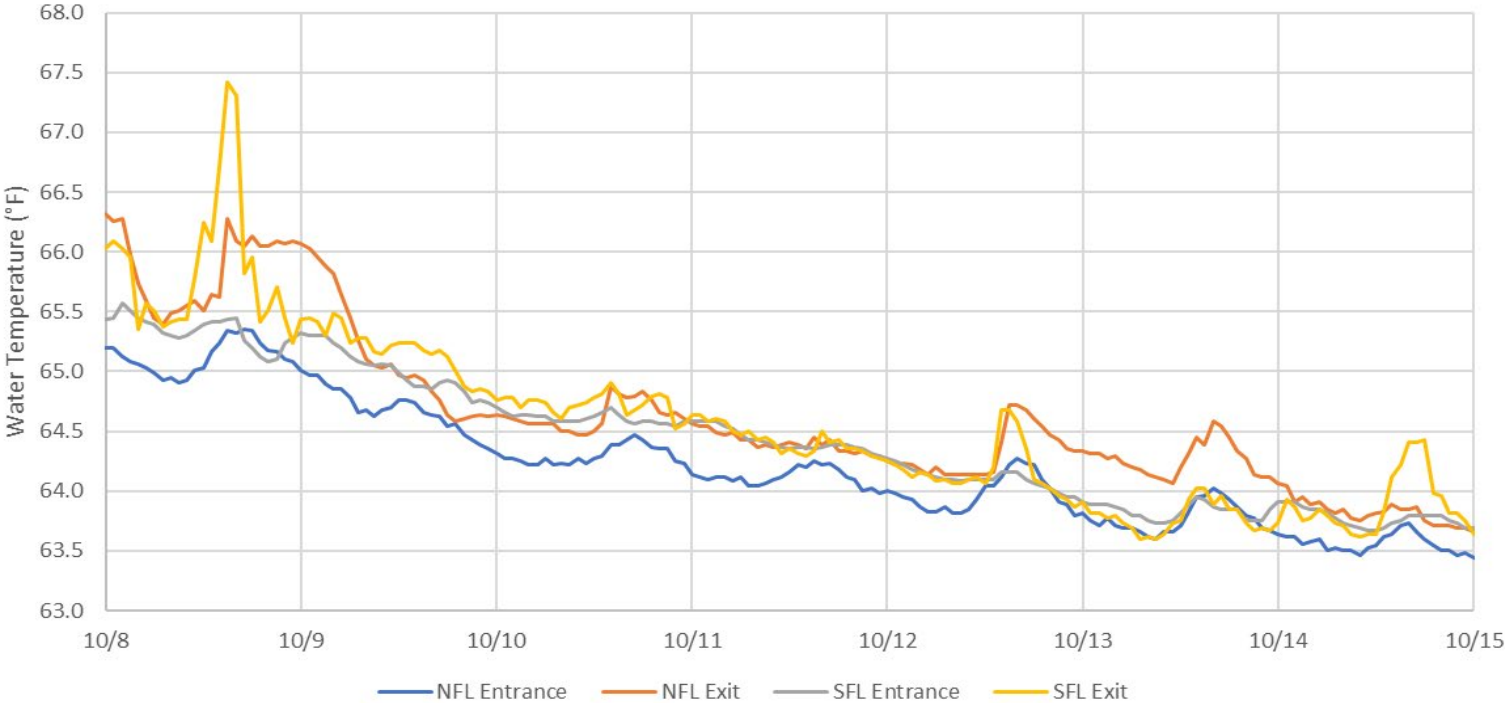
WDFW performing NPMP dam angling started 5/8/23 and ended 10/12/23

CRITFC translocation ended on 9/6/23.

John Day Dam Water Temperature (F)



JDA Ladder Temperatures



JDA Collection Channel Velocity

FPP Criteria: 1.5–4.0 feet per second (2 fps optimum)

Date	Measurement Location	Speed (ft/sec)	SFL Turbine RPMs (1,2,3)	Bay 19 TW (ft)
10/11/2023	Unit 4	2.58	55,55,0	159.1
10/11/2023	Unit 12	2.52	55,55,0	159.1
10/13/2023	Unit 4	2.58	55,55,0	159.6
10/13/2023	Unit 12	2.58	55,55,0	159.6
10/14/2023	Unit 4	2.58	55,55,0	159.8
10/14/2023	Unit 12	2.54	55,55,0	159.8

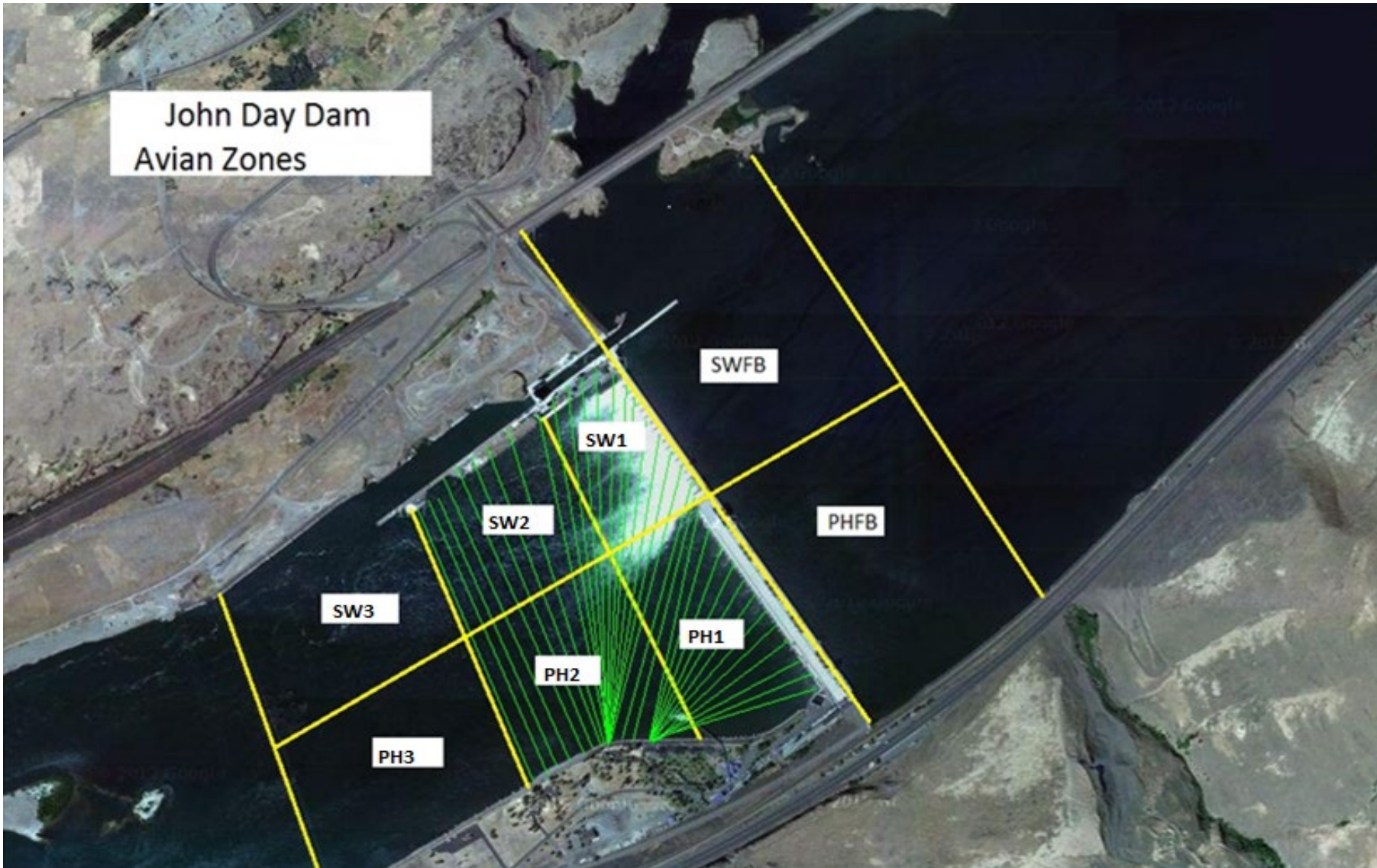
Average Weekly Velocity (ft/sec)	2.56
----------------------------------	------

JOHN DAY WEEKLY AVERAGES

	South Fish Ladder					NFL	JBS	Spill		
	SE1 (Ft)	S.Ent (Ft)	NE1 (Ft)	NE2 (Ft)	Bay19 (Ft)	N.Ent (Ft)	JBS Diff (Ft)	Spill Vol. (kcfs)	Spill (%)	# Spillbays
Sunday	8.0	1.4	9.2	9.1	1.5	1.6	4.6	1.6	2.2	1
Sunday	8.0	1.4	9.0	9.0	1.5	1.7	4.6	1.6	1.9	1
Monday	8.1	1.3	9.2	9.2	1.4	1.6	4.7	1.6	1.9	1
Monday	8.0	1.4	9.2	9.1	1.5	1.6	4.6	1.6	1.9	1
Tuesday	8.0	1.3	9.2	9.1	1.5	1.5	4.6	1.6	1.5	1
Tuesday	8.0	1.5	9.3	9.4	1.3	1.6	4.6	1.6	2.1	1
Wednesday	8.0	1.4	8.8	8.7	1.6	1.6	4.6	1.6	2.1	1
Wednesday	8.3	1.4	8.9	9.0	1.6	1.6	4.4	1.6	2.1	1
Thursday	8.3	1.3	9.2	9.1	1.5	1.5	4.6	1.6	1.9	1
Thursday	8.0	1.4	8.9	9.0	1.7	1.6	4.6	1.6	2.2	1
Friday	8.0	1.3	9.1	9.1	1.6	1.6	4.6	1.6	2.1	1
Friday	8.0	1.4	9.1	9.1	1.6	1.5	4.5	1.6	2.0	1
Saturday	8.2	1.5	9.5	9.5	1.7	1.4	4.7	1.6	1.8	1
Saturday	8.6	1.6	9.9	9.9	1.7	1.4	4.6	1.6	1.8	1
AVG:	8.1	1.4	9.2	9.2	1.6	1.6	4.6	1.6	2.0	1.0

	Temp (F)	Secchi (Ft)	Notes
Sunday	65.2	6.0	
Monday	64.9	6.0	
Tuesday	64.5	6.0	
Wednesday	64.5	6.0	
Thursday	64.3	6.0	
Friday	64.1	6.0	
Saturday	63.9	6.0	
AVG	64.5	6.0	

John Day Dam
Avian Zones



JDA Bird Counts: 10/8/23 to 10/14/23

F(1): Forage AM survey F(2): Forage PM Survey NF(1): Non-Forage AM Survey NF(2): Non-Forage PM Survey

Date	Zone	Gulls				Cormorant				Caspian tern				White Pelican				Grebe				Total	
		F(1)	F(2)	NF(1)	NF(2)	F(1)	F(2)	NF(1)	NF(2)	F(1)	F(2)	NF(1)	NF(2)	F(1)	F(2)	NF(1)	NF(2)	F(1)	F(2)	NF(1)	NF(2)		
8-Oct	PHFB	0	0	0	0	0	0	18	0	0	0	0	0	0	0	0	0	30	57	0	0	105	
8-Oct	SWFB	0	0	0	121	0	0	0	0	0	0	0	0	0	0	0	0	0	0	0	0	0	121
8-Oct	PH1	2	22	0	35	0	3	0	0	0	0	0	0	0	0	0	0	0	0	0	0	0	62
8-Oct	PH2	23	15	0	12	0	0	0	0	0	0	0	0	0	0	0	0	0	0	0	0	0	50
8-Oct	PH3	2	0	0	0	0	0	0	0	0	0	0	0	0	0	0	0	0	0	0	0	0	2
8-Oct	SW1	0	0	0	0	0	0	0	0	0	0	0	0	0	0	0	0	0	0	0	0	0	0
8-Oct	SW2	0	0	0	17	0	0	32	0	0	0	0	0	0	0	0	0	0	0	0	0	0	49
8-Oct	SW3	0	0	0	0	0	0	3	0	0	0	0	0	0	0	0	0	0	0	0	0	0	3
Avg/Survey		32		93		2		27		0		0		0		0		44		0		196	
9-Oct	PHFB	0	0	11	21	0	0	5	0	0	0	0	0	0	0	0	65	59	0	0	0	0	161
9-Oct	SWFB	0	0	121	137	0	0	0	0	0	0	0	0	0	0	0	0	0	0	0	0	0	258
9-Oct	PH1	110	56	11	0	2	0	0	0	0	0	0	0	0	0	0	0	0	0	0	0	0	179
9-Oct	PH2	9	22	0	0	0	0	0	0	0	0	0	0	0	0	0	0	0	0	0	0	0	31
9-Oct	PH3	0	0	0	0	0	0	0	0	0	0	0	0	0	0	0	0	0	0	0	0	0	0
9-Oct	SW1	0	0	0	0	0	0	0	0	0	0	0	0	0	0	0	0	0	0	0	0	0	0
9-Oct	SW2	0	0	0	0	0	0	23	17	0	0	0	0	0	0	0	0	0	0	0	0	0	40
9-Oct	SW3	0	0	0	0	0	0	5	7	0	0	0	0	0	0	0	0	0	0	0	0	0	12
Avg/Survey		99		151		1		29		0		0		0		0		62		0		341	
10-Oct	PHFB	0	0	0	0	0	0	0	0	0	0	0	0	0	0	0	0	53	0	0	0	0	53
10-Oct	SWFB	0	0	0	171	0	0	0	0	0	0	0	0	0	0	0	0	0	0	0	0	0	171
10-Oct	PH1	0	43	0	0	0	1	0	0	0	0	0	0	0	0	0	0	0	0	0	0	0	44
10-Oct	PH2	0	17	0	0	0	0	0	0	0	0	0	0	0	0	0	0	0	0	0	0	0	17
10-Oct	PH3	0	0	0	0	0	0	0	0	0	0	0	0	0	0	0	0	0	0	0	0	0	0
10-Oct	SW1	0	0	0	0	0	0	0	0	0	0	0	0	0	0	0	0	0	0	0	0	0	0
10-Oct	SW2	0	0	0	0	0	0	0	45	0	0	0	0	0	0	0	0	0	0	0	0	0	45
10-Oct	SW3	0	0	0	0	0	0	0	0	0	0	0	0	0	0	0	0	0	0	0	0	0	0
Avg/Survey		30		86		1		23		0		0		0		0		27		0		165	
11-Oct	PHFB	0	0	0	0	0	0	0	0	0	0	0	0	0	0	0	0	51	0	0	0	0	51
11-Oct	SWFB	0	0	0	211	0	0	0	0	0	0	0	0	0	0	0	0	0	0	0	0	0	211
11-Oct	PH1	0	4	0	0	0	2	0	0	0	0	0	0	0	0	0	0	0	0	0	0	0	6
11-Oct	PH2	0	10	0	0	0	0	0	0	0	0	0	0	0	0	0	0	0	0	0	0	0	10
11-Oct	PH3	0	0	0	0	0	0	0	0	0	0	0	0	0	0	0	0	0	0	0	0	0	0
11-Oct	SW1	0	0	0	0	0	0	0	0	0	0	0	0	0	0	0	0	0	0	0	0	0	0
11-Oct	SW2	0	0	0	0	0	0	0	44	0	0	0	0	0	0	0	0	0	0	0	0	0	44
11-Oct	SW3	0	0	0	0	0	0	0	0	0	0	0	0	0	0	0	0	0	0	0	0	0	0
Avg/Survey		7		106		1		22		0		0		0		0		26		0		161	

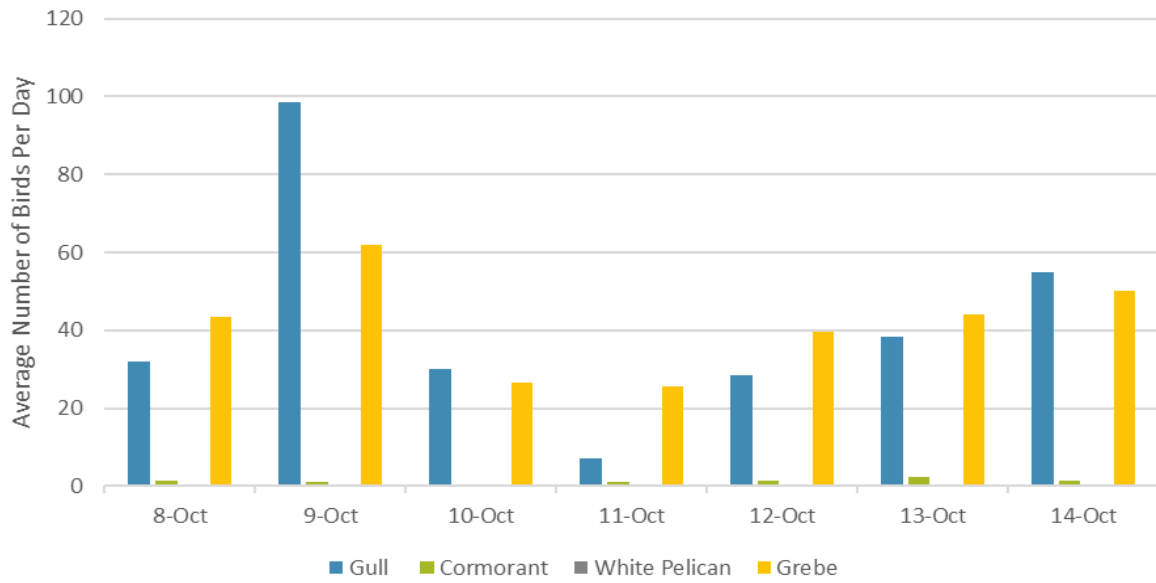
JDA Bird Counts: 10/8/23 to 10/14/23

F(1): Forage AM survey F(2): Forage PM Survey NF(1): Non-Forage AM Survey NF(2): Non-Forage PM Survey

Date	Zone	Gulls				Cormorant				Caspian tern				White Pelican				Grebe				Total
		F(1)	F(2)	NF(1)	NF(2)	F(1)	F(2)	NF(1)	NF(2)	F(1)	F(2)	NF(1)	NF(2)	F(1)	F(2)	NF(1)	NF(2)	F(1)	F(2)	NF(1)	NF(2)	
12-Oct	PHFB	0	0	0	0	0	0	0	0	0	0	0	0	0	0	0	54	25	0	0	79	
12-Oct	SWFB	0	0	158	200	0	0	0	0	0	0	0	0	0	0	0	0	0	0	0	358	
12-Oct	PH1	13	4	0	0	2	1	0	0	0	0	0	0	0	0	0	0	0	0	0	20	
12-Oct	PH2	22	16	0	0	0	0	0	0	0	0	0	0	0	0	0	0	0	0	0	38	
12-Oct	PH3	0	2	0	0	0	0	0	0	0	0	0	0	1	0	0	0	0	0	0	3	
12-Oct	SW1	0	0	0	0	0	0	0	0	0	0	0	0	0	0	0	0	0	0	0	0	
12-Oct	SW2	0	0	0	0	0	0	40	53	0	0	0	0	0	0	0	0	0	0	0	93	
12-Oct	SW3	0	0	0	0	0	0	0	0	0	0	0	0	0	0	0	0	0	0	0	0	
Avg/Survey		29		179		2		47		0		0		1		0		40		0		296
13-Oct	PHFB	0	0	0	0	0	0	0	0	0	0	0	0	0	0	0	44	44	0	0	88	
13-Oct	SWFB	0	0	163	213	0	0	0	0	0	0	0	0	0	0	0	0	0	0	0	376	
13-Oct	PH1	6	4	0	0	2	2	0	0	0	0	0	0	0	0	0	0	0	0	0	14	
13-Oct	PH2	24	14	0	0	0	0	0	0	0	0	0	0	0	0	0	0	0	0	0	38	
13-Oct	PH3	10	19	0	0	0	0	0	0	0	0	0	0	0	0	0	0	0	0	0	29	
13-Oct	SW1	0	0	0	0	0	1	0	0	0	0	0	0	0	0	0	0	0	0	0	1	
13-Oct	SW2	0	0	0	0	0	0	38	57	0	0	0	0	0	0	0	0	0	0	0	95	
13-Oct	SW3	0	0	0	0	0	0	4	0	0	0	0	0	0	0	0	0	0	0	0	4	
Avg/Survey		39		188		3		50		0		0		0		0		44		0		323
14-Oct	PHFB	0	0	152	206	0	0	0	0	0	0	0	0	0	0	0	50	48	0	0	456	
14-Oct	SWFB	0	0	0	0	0	0	0	0	0	0	0	0	0	0	0	0	2	0	0	2	
14-Oct	PH1	20	30	0	0	3	0	0	0	0	0	0	0	0	0	0	0	0	0	0	53	
14-Oct	PH2	30	20	0	0	0	0	0	0	0	0	0	0	0	0	0	0	0	0	0	50	
14-Oct	PH3	0	10	0	0	0	0	0	0	0	0	0	0	0	0	0	0	0	0	0	10	
14-Oct	SW1	0	0	0	0	0	0	0	0	0	0	0	0	0	0	0	0	0	0	0	0	
14-Oct	SW2	0	0	0	0	0	0	51	33	0	0	0	0	0	0	0	0	0	0	0	84	
14-Oct	SW3	0	0	0	0	0	0	0	18	0	0	0	0	0	0	0	0	0	0	0	18	
Avg/Survey		55		179		2		51		0		0		0		0		50		0		337

Totals	Gulls				Cormorant				Caspian tern				White Pelican				Grebe				Total
	F	NF	F	NF	F	NF	F	NF	F	NF	F	NF	F	NF	F	NF	F	NF			
Weekly Total	579	1960	19	493	0	0	1	0	582	0	0	42	0	3634							
Avg/Survey	41	140	1	35	0	0	0	0	42	0	260										

Foraging Piscivorous Birds



Non-Foraging Piscivorous Birds

