

FISHWAY STATUS REPORT - JOHN DAY DAM

Date: 4/8/2023

Inspection Period: 4/2/2023 thru 4/8/2023



**US Army Corps
of Engineers**
Portland District

JD/WC Project-Fisheries
P.O. Box 823
Rufus, Oregon 97050
Phone: 541-506-7860

All JD Fishways are inspected twice per day during fish passage season, Mar. 1 - Nov. 30.
Additional and frequent monitoring, of the PLC displays in SMF Fisheries Office, as necessary.

John Day Dam	Inspection OOC	Criteria Limit	Total Number of Inspections: 14			Temperature:	44.2 F
						Secchi:	6.0 Ft.

NORTH FISHWAY

Exit differential	0	≤ 0.5'							
Exit Control weirs	0	High setting							
Count station differential	0	≤ 0.3'							
Entrance differential	0	1.0' - 2.0'	AVG (Ft.)	1.5					

SOUTH FISHWAY

Exit differential	0	≤ 0.5'							
Exit Control weirs	0	Mid setting							
Count station differential	0	≤ 0.3'							
Weir crest depth (US gauge)	0	1.0' ± 0.1'							
South entrance differential	0	1.0' - 2.0'	AVG (Ft.)	1.3					
Entrance weir SE1	0	depth (≥ 8')	AVG (Ft.)	9.0					
Collection channel velocity	0	1.5 - 4 fps	AVG (Ft.)	2.63					
N. Entrance PH(Bay 19)differential	0	1.0' - 2.0'	AVG (Ft.)	1.7					
Entrance weir NE1	0	depth (≥ 8')	AVG (Ft.)	8.9					
Entrance weir NE2	0	depth (≥ 8')	AVG (Ft.)	9.6					

JUVENILE PASSAGE

Forebay/bypass conduit differential	0	4.0' - 5.0'	AVG (Ft.)	4.5					
Submersible traveling screens	0	visual inspect							
Turbine trashrack drawdown	0	<1.5', wkly							
Vert barrier screen drawdown	0	<1.2', wkly							
Spill volume	0	per FPP	AVG (kcfs)	0.0	Avg %				
Spill pattern	0	per FPP							
Turbine Unit Priority	0	per FPP							
Turbine 1% Efficiency	0	per FPP							

Fisheries Related Operations

Smolt Monitoring Operations:

SMF RTS 04/01/23

JBS RTS 04/01/23

Adult Ladder Operations:

NFL in criteria

SFL turbine 2 RTS 3/20 @ reduced RPMs (55 RPMs) to prolong the repairs

SFL turbine 3 still OOS (Philadelphia gear inspected on 2/22 and recommended FOOS - See 23JDA03) - Awaiting Funding

FOG's removed

Project Operations:

Current outages: MU4 (ETR: 11/2/23), MU5 (ETR: 4/27/23) MU7 (ETR: 7/31/28), MU8 (ETR: 1/10/24), MU9 (ETR: 4/10/23), MU10 (ETR: 11/15/23) MU13 (ETR: 6/14/23)

Maintenance:

Calibration:

All gauges within the 0.3' criteria.

Bird Data:

Grebes have been spotted occasionally in the forebay, gull numbers are fewer than 10, and cormorant numbers are starting to decrease (~30).

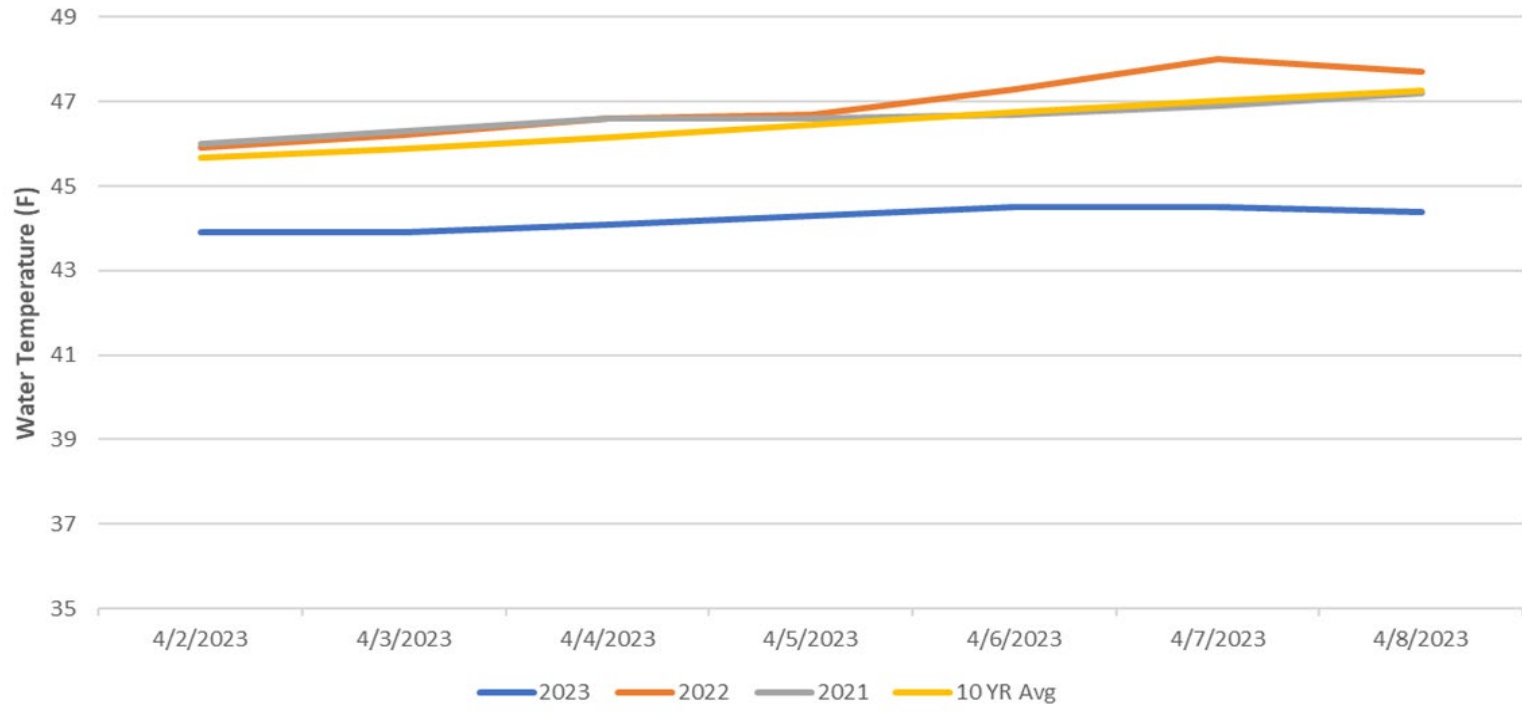
There are approximately 3 pelicans hanging around Preacher's Island with very few foraging observations in JDA bird counting zones.

11 of 125 avian lines down, in contracting phase for replacement of 9 lines from powerhouse roof.

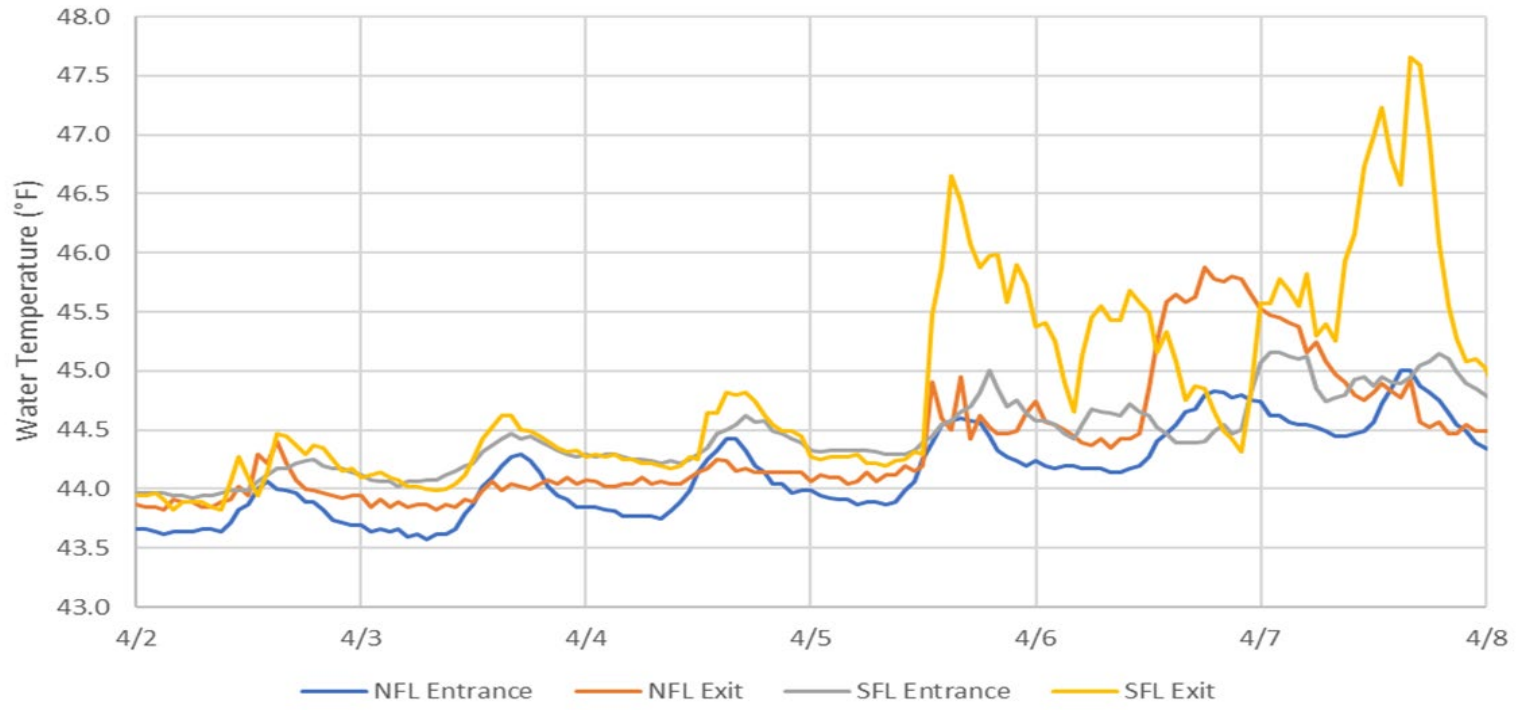
Research:

Preperations for the 2023 Research Season are underway - No new research is scheduled at this time

John Day Dam Water Temperature (F)



John Day Ladder Temperatures



JDA Collection Channel Velocity

FPP Criteria: 1.5–4.0 feet per second (2 fps optimum)

Date	Measurement Location	Speed (ft/sec)	SFL Turbine RPMs (1,2,3)	Bay 19 TW (ft)
4/2/2023	Unit 4	2.65	55,55,0	160.2
4/2/2023	Unit 12	2.64	55,55,0	160.2
4/5/2023	Unit 4	2.60	55,55,0	159.6
4/5/2023	Unit 12	2.62	55,55,0	159.6
4/8/2023	Unit 4	2.73	55,55,0	160.0
4/8/2023	Unit 12	2.65	55,55,0	160.0
4/10/2023	Unit 4	2.58	55,55,0	159.9
4/10/2023	Unit 12	2.60	55,55,0	159.9

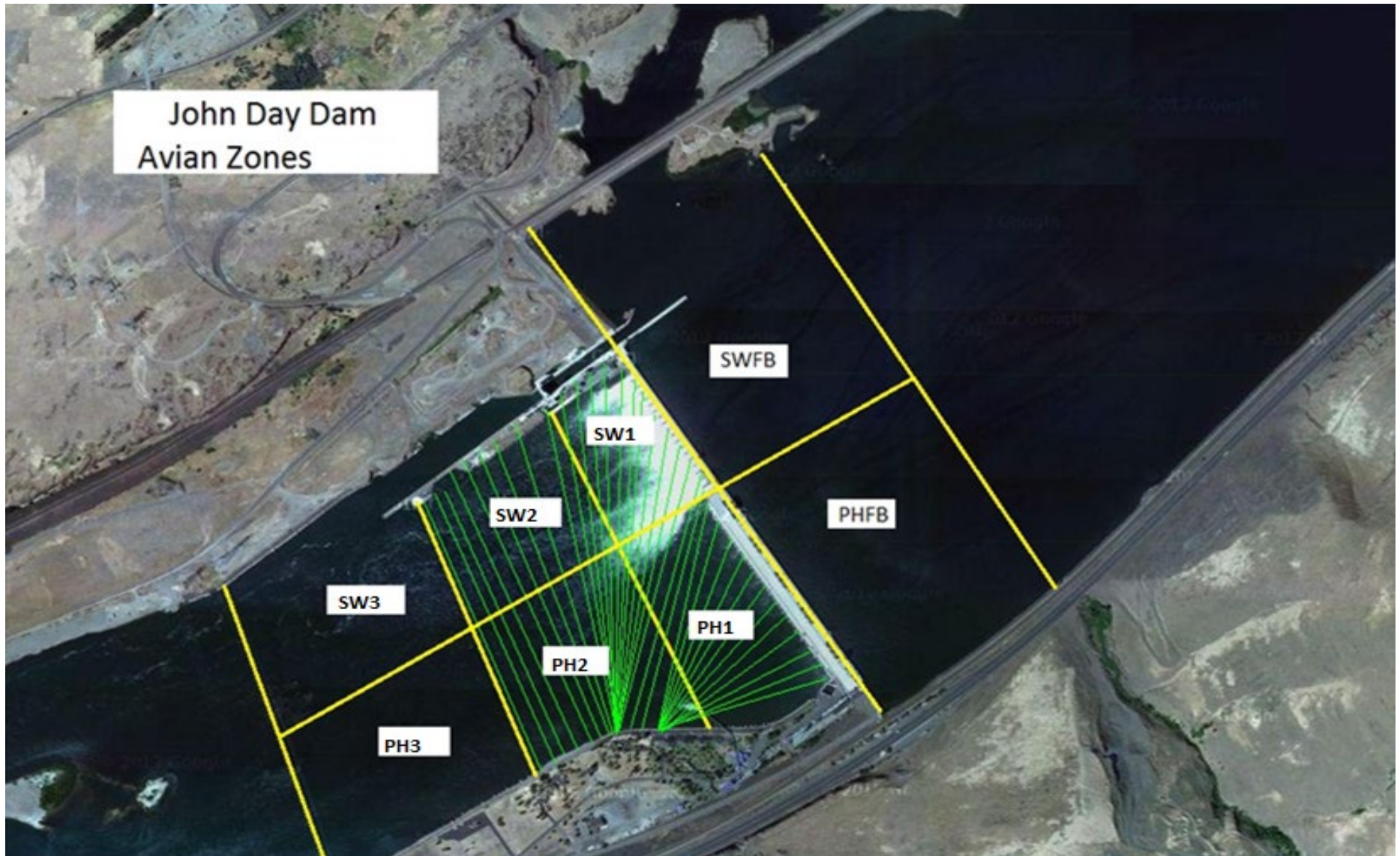
Average Weekly Velocity (ft/sec)	2.63
----------------------------------	------

JOHN DAY WEEKLY AVERAGES

	South Fish Ladder					NFL	JBS	Spill	
	SE1 (Ft)	S.Ent (Ft)	NE1 (Ft)	NE2 (Ft)	Bay19 (Ft)	N.Ent (Ft)	JBS Diff (Ft)	Spill Vol. (kcfs)	# Spillbays
Sunday	9.3	1.4	9.2	9.9	1.7	1.5	4.5	0.0	0.0
Sunday	8.7	1.4	8.6	9.3	1.8	1.6	4.4	0.0	0.0
Monday	10.0	1.1	9.6	10.3	1.8	1.5	4.8	0.0	0.0
Monday	8.9	1.1	8.7	9.4	1.8	1.6	4.2	0.0	0.0
Tuesday	9.3	1.1	9.1	9.8	1.5	1.5	4.6	0.0	0.0
Tuesday	9.2	1.1	9.1	9.8	1.6	1.4	4.7	0.0	0.0
Wednesday	9.0	1.5	8.9	9.6	1.6	1.5	4.5	0.0	0.0
Wednesday	8.6	1.4	8.6	9.5	1.7	1.6	4.5	0.0	0.0
Thursday	9.3	1.1	9.1	9.8	1.5	1.5	4.6	0.0	0.0
Thursday	8.4	1.3	8.4	9.0	1.6	1.7	4.5	0.0	0.0
Friday	9.2	1.2	9.0	9.7	1.5	1.4	4.5	0.0	0.0
Friday	8.7	1.3	8.5	9.2	1.8	1.5	4.6	0.0	0.0
Saturday	9.0	1.5	9.0	9.7	1.7	1.4	4.5	0.0	0.0
Saturday	8.3	1.4	8.1	8.8	1.8	1.6	4.6	0.0	0.0
AVG:	9.0	1.3	8.9	9.6	1.7	1.5	4.5	0.0	0.0

	Temp (F)	Secchi (Ft)	Notes
Sunday	43.9	6.0	
Monday	43.9	6.0	
Tuesday	44.1	6.0	
Wednesday	44.3	6.0	
Thursday	44.5	6.0	
Friday	44.5	6.0	
Saturday	44.4	6.0	
AVG	44.2	6.0	

John Day Dam
Avian Zones



JDA Bird Counts: 4/2/23 to 4/8/23

F(1): Forage AM survey F(2): Forage PM Survey NF(1): Non-Forage AM Survey NF(2): Non-Forage PM Survey

Date	Zone	Gulls				Cormorant				Caspian tern				White Pelican				Grebe				Total
		F(1)	F(2)	NF(1)	NF(2)	F(1)	F(2)	NF(1)	NF(2)	F(1)	F(2)	NF(1)	NF(2)	F(1)	F(2)	NF(1)	NF(2)	F(1)	F(2)	NF(1)	NF(2)	
2-Apr	PHFB	0	0	0	0	0	0	0	0	0	0	0	0	0	0	0	0	0	0	0	0	0
2-Apr	SWFB	0	0	0	0	0	0	0	0	0	0	0	0	0	0	0	0	0	0	0	0	0
2-Apr	PH1	0	0	0	0	0	0	0	0	0	0	0	0	0	0	0	0	0	0	0	0	0
2-Apr	PH2	0	0	0	0	0	0	0	0	0	0	0	0	0	0	0	0	0	0	0	0	0
2-Apr	PH3	0	0	0	0	0	0	0	0	0	0	0	0	0	0	0	0	0	0	0	0	0
2-Apr	SW1	0	0	0	0	0	0	0	0	0	0	0	0	1	0	0	0	0	0	0	0	1
2-Apr	SW2	0	0	0	0	0	0	19	25	0	0	0	0	0	0	1	0	0	0	0	0	45
2-Apr	SW3	0	0	0	0	0	0	0	0	0	0	0	0	0	0	0	0	0	0	0	0	0
Avg/Survey		0		0		0		22		0		0		1		1		0		0		23
3-Apr	PHFB	0	0	0	0	0	0	0	0	0	0	0	0	0	0	0	0	2	6	0	0	8
3-Apr	SWFB	0	0	0	0	0	0	0	0	0	0	0	0	0	0	0	0	0	0	0	0	0
3-Apr	PH1	0	0	0	0	0	0	0	0	0	0	0	0	0	0	0	0	0	0	0	0	0
3-Apr	PH2	0	0	0	0	0	0	0	0	0	0	0	0	0	0	0	0	0	0	0	0	0
3-Apr	PH3	0	0	0	0	0	0	0	0	0	0	0	0	0	0	0	0	0	0	0	0	0
3-Apr	SW1	0	0	0	0	0	0	20	0	0	0	0	0	0	0	0	0	0	0	0	0	20
3-Apr	SW2	0	0	0	0	0	0	0	27	0	0	0	0	0	0	0	0	0	0	0	0	27
3-Apr	SW3	0	0	0	0	0	0	0	0	0	0	0	0	0	0	0	0	0	0	0	0	0
Avg/Survey		0		0		0		24		0		0		0		0		4		0		28
4-Apr	PHFB	0	0	0	0	0	0	0	0	0	0	0	0	0	0	0	8	3	2	0	0	13
4-Apr	SWFB	0	0	0	0	0	0	0	0	0	0	0	0	0	0	0	0	0	0	0	0	0
4-Apr	PH1	0	0	0	0	0	0	0	0	0	0	0	0	0	0	0	2	0	0	0	0	2
4-Apr	PH2	0	0	0	0	0	0	0	0	0	0	0	0	0	0	0	0	0	0	0	0	0
4-Apr	PH3	0	0	0	0	0	0	0	0	0	0	0	0	0	0	0	0	0	0	0	0	0
4-Apr	SW1	0	0	0	0	0	0	0	0	0	0	0	0	0	0	0	0	0	0	0	0	0
4-Apr	SW2	0	0	0	0	0	0	35	31	0	0	0	0	0	0	0	0	0	0	0	0	66
4-Apr	SW3	0	0	0	0	0	0	0	0	0	0	0	0	0	0	0	0	0	0	0	0	0
Avg/Survey		0		0		0		33		0		0		0		4		4		0		41
5-Apr	PHFB	0	0	0	0	0	0	0	0	0	0	0	0	0	0	0	0	2	0	0	0	2
5-Apr	SWFB	0	0	0	0	0	0	0	0	0	0	0	0	0	0	0	0	0	0	0	0	0
5-Apr	PH1	0	0	0	0	0	0	0	0	0	0	0	0	0	0	0	0	0	0	0	0	0
5-Apr	PH2	0	0	0	0	0	0	0	0	0	0	0	0	0	0	0	0	0	0	0	0	0
5-Apr	PH3	0	0	0	0	0	0	0	0	0	0	0	0	0	0	0	0	0	0	0	0	0
5-Apr	SW1	0	0	0	0	0	0	0	0	0	0	0	0	0	0	0	0	0	0	0	0	0
5-Apr	SW2	0	0	0	0	0	0	35	31	0	0	0	0	0	0	0	0	0	0	0	0	66
5-Apr	SW3	0	0	0	0	0	0	0	0	0	0	0	0	0	0	0	0	0	0	0	0	0
Avg/Survey		0		0		0		33		0		0		0		0		1		0		34

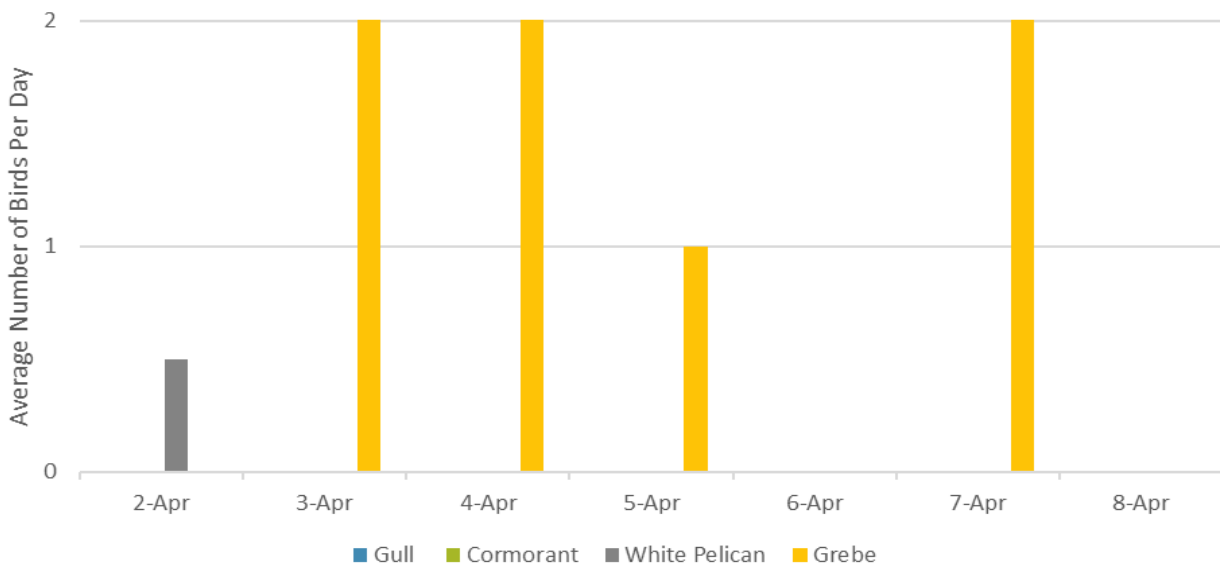
JDA Bird Counts: 4/2/23 to 4/8/23

F(1): Forage AM survey F(2): Forage PM Survey NF(1): Non-Forage AM Survey NF(2): Non-Forage PM Survey

Date	Zone	Gulls				Cormorant				Caspian tern				White Pelican				Grebe				Total
		F(1)	F(2)	NF(1)	NF(2)	F(1)	F(2)	NF(1)	NF(2)	F(1)	F(2)	NF(1)	NF(2)	F(1)	F(2)	NF(1)	NF(2)	F(1)	F(2)	NF(1)	NF(2)	
6-Apr	PHFB	0	0	0	0	0	0	0	0	0	0	0	0	0	0	0	0	0	0	0	0	0
6-Apr	SWFB	0	0	0	0	0	0	0	0	0	0	0	0	0	0	0	0	0	0	0	0	0
6-Apr	PH1	0	0	0	0	1	0	0	0	0	0	0	0	0	0	0	0	0	0	0	0	1
6-Apr	PH2	0	0	0	0	0	0	0	0	0	0	0	0	0	0	0	0	0	0	0	0	0
6-Apr	PH3	0	0	0	0	0	0	0	0	0	0	0	0	0	0	0	0	0	0	0	0	0
6-Apr	SW1	0	0	0	0	0	0	0	0	0	0	0	0	0	0	0	0	0	0	0	0	0
6-Apr	SW2	0	0	0	0	0	0	14	33	0	0	0	0	0	0	0	0	0	0	0	0	47
6-Apr	SW3	0	0	0	0	0	0	0	0	0	0	0	0	0	0	0	0	0	0	0	0	0
Avg/Survey		0		0		1		24		0		0		0		0		0		0		24
7-Apr	PHFB	0	0	0	0	0	0	0	0	0	0	0	0	0	0	0	7	7	0	0	0	14
7-Apr	SWFB	0	0	0	0	0	0	0	0	0	0	0	0	0	0	0	0	0	0	0	0	0
7-Apr	PH1	0	0	0	0	0	0	0	0	0	0	0	0	0	0	0	0	0	0	0	0	0
7-Apr	PH2	0	0	0	0	0	0	0	0	0	0	0	0	0	0	0	0	0	0	0	0	0
7-Apr	PH3	0	0	0	0	0	0	0	0	0	0	0	0	0	0	0	0	0	0	0	0	0
7-Apr	SW1	0	0	0	0	0	0	0	0	0	0	0	0	0	0	0	0	0	0	0	0	0
7-Apr	SW2	0	0	0	0	0	0	18	12	0	0	0	0	0	0	0	0	0	0	0	0	30
7-Apr	SW3	0	0	0	0	0	0	4	0	0	0	0	0	0	0	0	0	0	0	0	0	4
Avg/Survey		0		0		0		17		0		0		0		0		7		0		24
8-Apr	PHFB	0	0	0	0	0	0	0	0	0	0	0	0	0	0	0	0	0	0	0	0	0
8-Apr	SWFB	0	0	0	0	0	0	0	0	0	0	0	0	0	0	0	0	0	0	0	0	0
8-Apr	PH1	0	0	0	0	0	0	0	0	0	0	0	0	0	0	0	0	0	0	0	0	0
8-Apr	PH2	0	0	0	0	0	0	0	0	0	0	0	0	0	0	0	0	0	0	0	0	0
8-Apr	PH3	0	0	0	0	0	0	0	0	0	0	0	0	0	0	0	0	0	0	0	0	0
8-Apr	SW1	0	0	0	0	0	0	0	0	0	0	0	0	0	0	0	0	0	0	0	0	0
8-Apr	SW2	0	0	0	0	0	0	9	12	0	0	0	0	0	0	0	0	0	0	0	0	21
8-Apr	SW3	0	0	0	0	0	0	0	0	0	0	0	0	0	0	0	0	0	0	0	0	0
Avg/Survey		0		0		0		11		0		0		0		0		0		0		11

Totals	Gulls				Cormorant				Caspian tern				White Pelican				Grebe				Total
	F	NF	F	NF	F	NF	F	NF	F	NF	F	NF	F	NF	F	NF					
Weekly Total	0	0	1	325	0	0	1	9	31	0	367										
Avg/Survey	0	0	0	23	0	0	0	1	2	0	26										

Foraging Piscivorous Birds



Non-Foraging Piscivorous Birds

