

FISHWAY STATUS REPORT - JOHN DAY DAM

Date: 2/4/2023

Inspection Period: 1/29/2023 thru 2/4/2023



**US Army Corps
of Engineers**
Portland District

JD/WC Project-Fisheries
P.O. Box 823
Rufus, Oregon 97050
Phone: 541-506-7860

All JD Fishways are inspected twice per day during fish passage season, Mar. 1 - Nov. 30.
Additional and frequent monitoring, of the PLC displays in SMF Fisheries Office, as necessary.

John Day Dam	Inspection OOC	Criteria Limit	Total Number of Inspections: 6			Temperature:	38.4 F
						Secchi:	6.0 Ft.
NORTH FISHWAY							
Exit differential	0	≤ 0.5'					
Exit Control weirs	0	High setting					
Count station differential	0	≤ 0.3'					
Entrance differential	0	1.0' - 2.0'	AVG (Ft.)	1.6			
SOUTH FISHWAY							
Exit differential	0	≤ 0.5'					
Exit Control weirs	0	Mid setting					
Count station differential	0	≤ 0.3'					
Weir crest depth (US gauge)	0	1.0' ± 0.1'					
South entrance differential	0	1.0' - 2.0'	AVG (Ft.)	#DIV/0!			
Entrance weir SE1	0	depth (≥ 8')	AVG (Ft.)	#DIV/0!			
Collection channel velocity	0	1.5 - 4 fps	AVG (Ft.)	#DIV/0!			
N. Entrance PH(Bay 19)differential	0	1.0' - 2.0'	AVG (Ft.)	#DIV/0!			
Entrance weir NE1	0	depth (≥ 8')	AVG (Ft.)	#DIV/0!			
Entrance weir NE2	0	depth (≥ 8')	AVG (Ft.)	#DIV/0!			
JUVENILE PASSAGE							
Forebay/bypass conduit differential	0	4.0' - 5.0'	AVG (Ft.)	#DIV/0!			
Submersible traveling screens	0	visual inspect					
Turbine trashrack drawdown	0	<1.5', wkly					
Vert barrier screen drawdown	0	<1.2', wkly					
Spill volume	0	per FPP	Avg (kcfs)	0.0	Avg %		
Spill pattern	0	per FPP					
Turbine Unit Priority	0	per FPP					
Turbine 1% Efficiency	0	per FPP					

Fisheries Related Operations

Smolt Monitoring Operations:

SMF was dewatered on 12/7/22

JBS was dewatered on 1/19/23

Adult Ladder Operations:

NFL RTS on 1/12/23

SFL was dewatered on 1/17/23.

Project Operations:

Current outages: MU4 (ETR: 11/2/23), MU5 (ETR: 1/31/23) MU7 (ETR: 7/31/28), MU8 (ETR: 2/16/23), MU10 (ETR: 3/30/23)

MU13 (ETR: 3/23/23)

Spill from Bay 2 ended on 11/29/22 at JDA

Maintenance:

NFL RTS 1/12/23

SFL dewatered on 1/17/23 (ETR: 2/27/23)

SMF down for Winter Maintenance (ETR: 2/21/23)

Calibration:

All gauges within the 0.3' criteria.

Bird Data:

Grebes haven't been present, Gull numbers are fewer than 10, and cormorant numbers are holding steady (~60).

There are approximately 3 pelicans hanging around Preacher's Island with very few foraging observations in JDA bird counting zones.

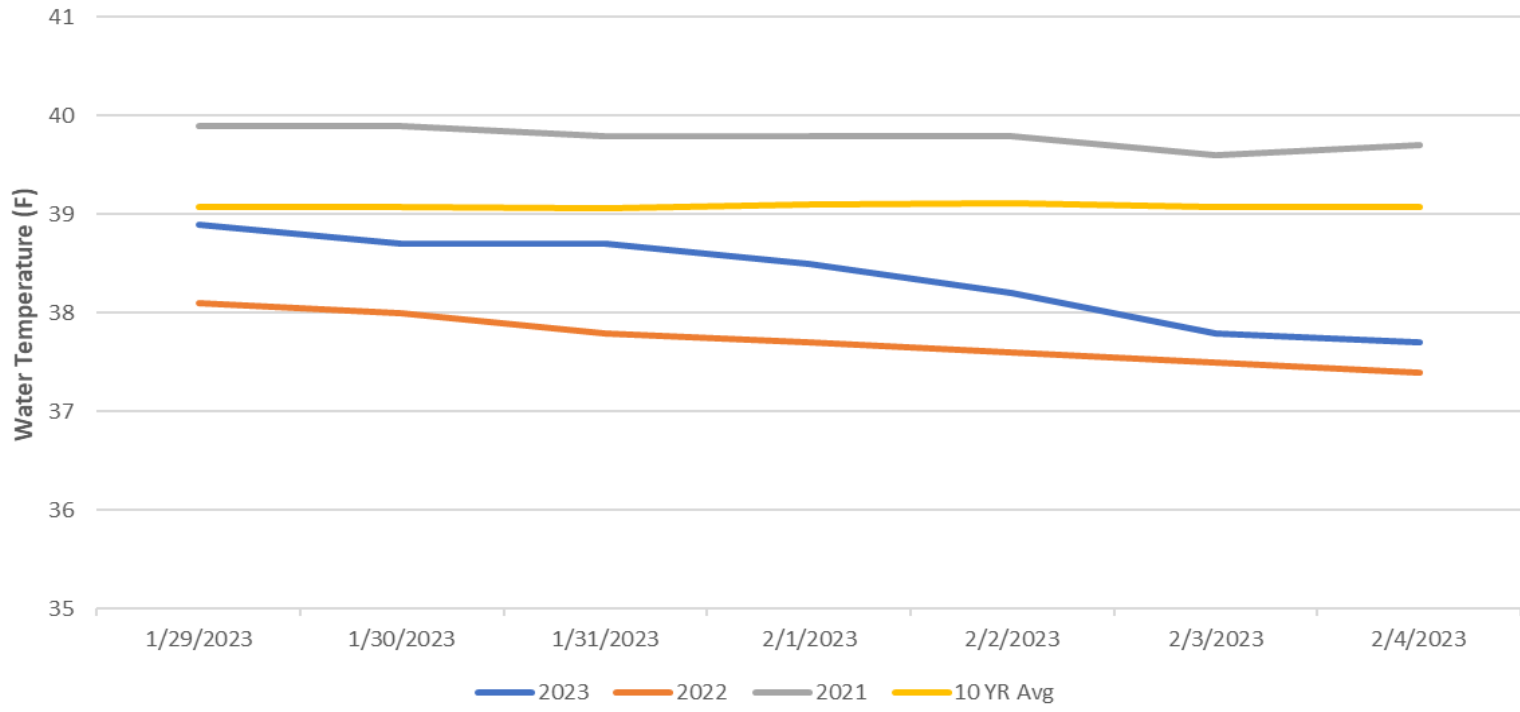
11 of 125 avian lines down, in contracting phase for replacement of 9 lines from powerhouse roof. SFL 180 and powerhouse roof was scanned for PIT Tags on 02/01/23. 1 new PIT Tag detected in SFL and 5 new PIT Tags detected on powerhouse roof.

No bird counts are being conducted on Saturdays, Sundays, and holidays (back to counting by 3/1/23).

Research:

Preperations for the 2023 Research Season are underway - No new research is scheduled at this time

John Day Dam Water Temperature (F)



JDA Collection Channel Velocity

FPP Criteria: 1.5–4.0 feet per second (2 fps optimum)

Date	Measurement Location	Speed (ft/sec)	SFL Turbine RPMs (1,2,3)	Bay 19 TW (ft)

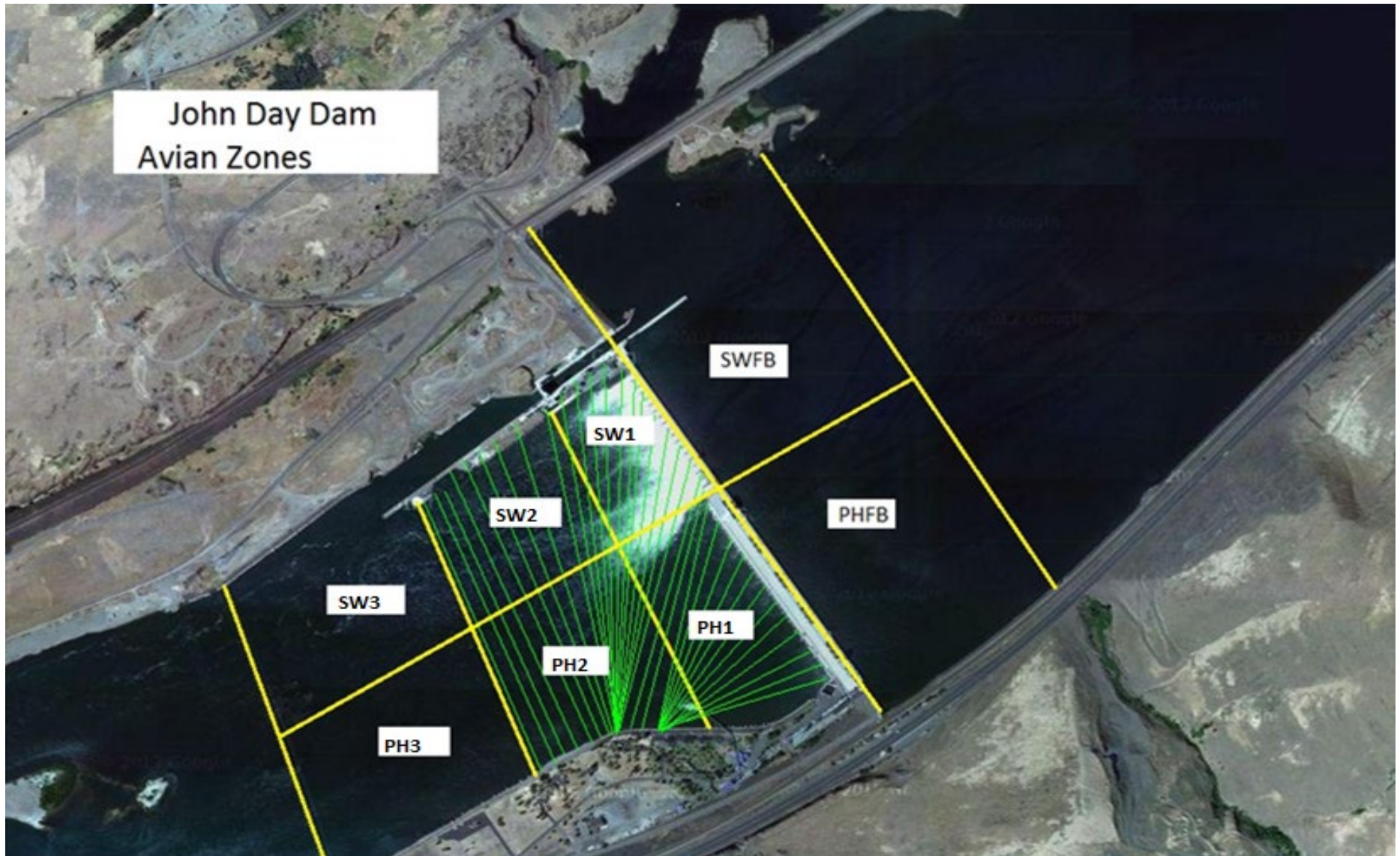
Average Weekly Velocity (ft/sec)	#DIV/0!
----------------------------------	---------

JOHN DAY WEEKLY AVERAGES

	South Fish Ladder					NFL	JBS	Spill	
	SE1 (Ft)	S.Ent (Ft)	NE1 (Ft)	NE2 (Ft)	Bay19 (Ft)	N.Ent (Ft)	JBS Diff (Ft)	Spill Vol. (kcfs)	# Spillbays
Sunday	X	X	X	X	X	1.6	X	0.0	0.0
Monday	X	X	X	X	X	1.5	X	0.0	0.0
Tuesday	X	X	X	X	X	1.4	X	0.0	0.0
Wednesday	X	X	X	X	X	1.6	X	0.0	0.0
Thursday	X	X	X	X	X	1.5	X	0.0	0.0
Friday	X	X	X	X	X	1.7	X	0.0	0.0
Saturday	X	X	X	X	X		X	0.0	0.0
AVG:	#DIV/0!	#DIV/0!	#DIV/0!	#DIV/0!	#DIV/0!	1.6	#DIV/0!	0.0	0.0

	Temp (F)	Secchi (Ft)	Notes
Sunday	38.9	6.0	X: Winter Maintenance
Monday	38.7	6.0	
Tuesday	38.7	6.0	
Wednesday	38.5	6.0	
Thursday	38.2	6.0	
Friday	37.8	6.0	
Saturday	37.7	6.0	
AVG	38.4	6.0	

John Day Dam
Avian Zones

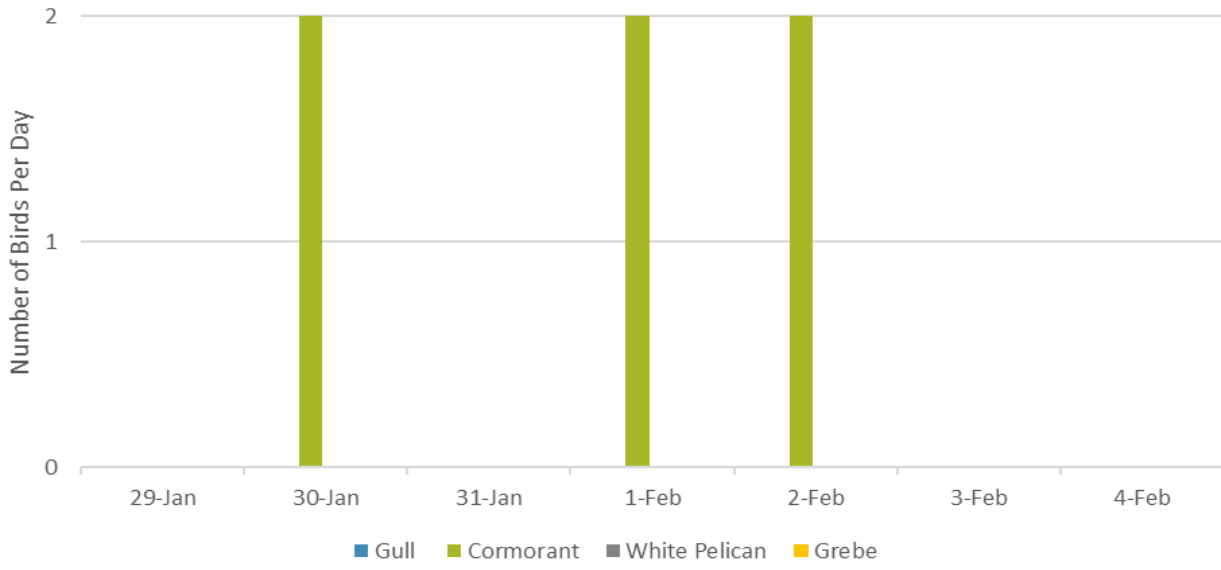


JDA Bird Counts: 1/29/23 to 2/4/23

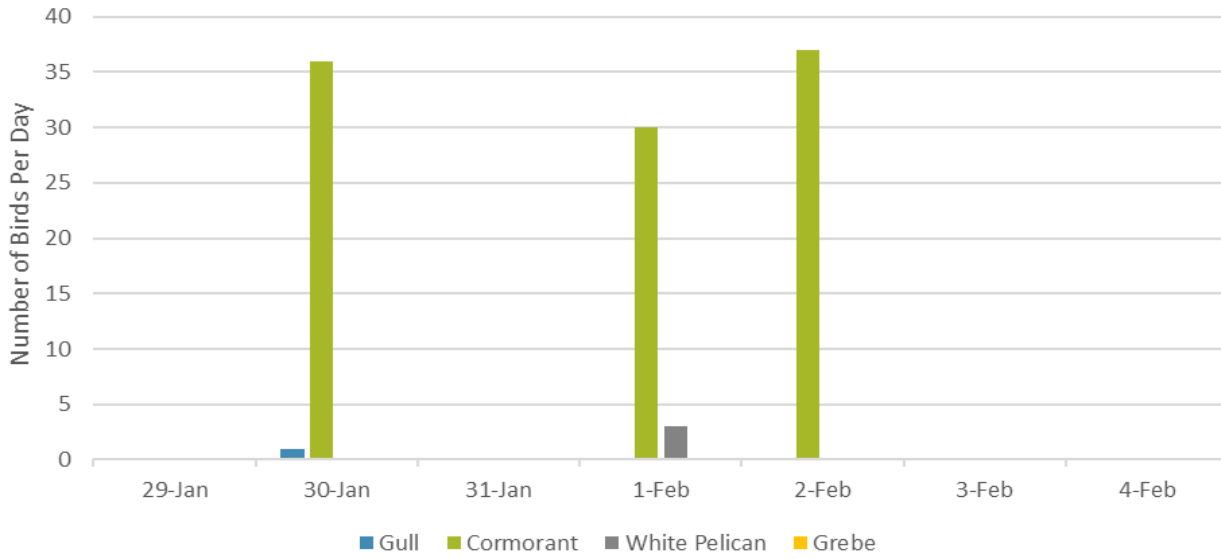
F(1): Forage AM survey F(2): Forage PM Survey NF(1): Non-Forage AM Survey NF(2): Non-Forage PM Survey

Date	Zone	Gulls				Cormorant				Caspian tern				White Pelican				Grebe				Total
		F(1)	F(2)	NF(1)	NF(2)	F(1)	F(2)	NF(1)	NF(2)	F(1)	F(2)	NF(1)	NF(2)	F(1)	F(2)	NF(1)	NF(2)	F(1)	F(2)	NF(1)	NF(2)	
29-Jan	PHFB	0	0	0	0	0	0	0	0	0	0	0	0	0	0	0	0	0	0	0	0	0
29-Jan	SWFB	0	0	0	0	0	0	0	0	0	0	0	0	0	0	0	0	0	0	0	0	0
29-Jan	PH1	0	0	0	0	0	0	0	0	0	0	0	0	0	0	0	0	0	0	0	0	0
29-Jan	PH2	0	0	0	0	0	0	0	0	0	0	0	0	0	0	0	0	0	0	0	0	0
29-Jan	PH3	0	0	0	0	0	0	0	0	0	0	0	0	0	0	0	0	0	0	0	0	0
29-Jan	SW1	0	0	0	0	0	0	0	0	0	0	0	0	0	0	0	0	0	0	0	0	0
29-Jan	SW2	0	0	0	0	0	0	0	0	0	0	0	0	0	0	0	0	0	0	0	0	0
29-Jan	SW3	0	0	0	0	0	0	0	0	0	0	0	0	0	0	0	0	0	0	0	0	0
Total/Survey		0		0		0		0		0		0		0		0		0		0		0
30-Jan	PHFB	0	0	0	0	1	0	0	0	0	0	0	0	0	0	0	0	0	0	0	0	1
30-Jan	SWFB	0	0	0	0	0	0	0	0	0	0	0	0	0	0	0	0	0	0	0	0	0
30-Jan	PH1	0	0	0	0	3	0	0	0	0	0	0	0	0	0	0	0	0	0	0	0	3
30-Jan	PH2	0	0	0	0	0	0	0	0	0	0	0	0	0	0	0	0	0	0	0	0	0
30-Jan	PH3	0	0	1	0	0	0	0	0	0	0	0	0	0	0	0	0	0	0	0	0	1
30-Jan	SW1	0	0	0	0	0	0	0	0	0	0	0	0	0	0	0	0	0	0	0	0	0
30-Jan	SW2	0	0	0	0	0	0	36	0	0	0	0	0	0	0	0	0	0	0	0	0	36
30-Jan	SW3	0	0	0	0	0	0	0	0	0	0	0	0	0	0	0	0	0	0	0	0	0
Total/Survey		0		1		4		36		0		0		0		0		0		0		41
31-Jan	PHFB	0	0	0	0	0	0	0	0	0	0	0	0	0	0	0	0	0	0	0	0	0
31-Jan	SWFB	0	0	0	0	0	0	0	0	0	0	0	0	0	0	0	0	0	0	0	0	0
31-Jan	PH1	0	0	0	0	0	0	0	0	0	0	0	0	0	0	0	0	0	0	0	0	0
31-Jan	PH2	0	0	0	0	0	0	0	0	0	0	0	0	0	0	0	0	0	0	0	0	0
31-Jan	PH3	0	0	0	0	0	0	0	0	0	0	0	0	0	0	0	0	0	0	0	0	0
31-Jan	SW1	0	0	0	0	0	0	0	0	0	0	0	0	0	0	0	0	0	0	0	0	0
31-Jan	SW2	0	0	0	0	0	0	0	0	0	0	0	0	0	0	0	0	0	0	0	0	0
31-Jan	SW3	0	0	0	0	0	0	0	0	0	0	0	0	0	0	0	0	0	0	0	0	0
Total/Survey		0		0		0		0		0		0		0		0		0		0		0
1-Feb	PHFB	0	0	0	0	0	0	0	0	0	0	0	0	0	0	0	0	0	0	0	0	0
1-Feb	SWFB	0	0	0	0	0	0	0	0	0	0	0	0	0	0	0	0	0	0	0	0	0
1-Feb	PH1	0	0	0	0	3	0	0	0	0	0	0	0	0	0	0	0	0	0	0	0	3
1-Feb	PH2	0	0	0	0	0	0	0	0	0	0	0	0	0	3	0	0	0	0	0	0	3
1-Feb	PH3	0	0	0	0	0	0	0	0	0	0	0	0	0	0	0	0	0	0	0	0	0
1-Feb	SW1	0	0	0	0	0	0	0	0	0	0	0	0	0	0	0	0	0	0	0	0	0
1-Feb	SW2	0	0	0	0	0	0	30	0	0	0	0	0	0	0	0	0	0	0	0	0	30
1-Feb	SW3	0	0	0	0	0	0	0	0	0	0	0	0	0	0	0	0	0	0	0	0	0
Total/Survey		0		0		3		30		0		0		0		3		0		0		36

Foraging Piscivorous Birds



Non-Foraging Piscivorous Birds





JDA crews performing a fish salvage of the JBS collection channel on 1/19/23 (4-sculpin recovered and released in good condition).