

FISHWAY STATUS REPORT - JOHN DAY DAM

Date: 9/3/2022

Inspection Period: 8/28/2022 thru 9/3/2022



**US Army Corps
of Engineers**
Portland District

JD/WC Project-Fisheries
P.O. Box 823
Rufus, Oregon 97050
Phone: 541-506-7860

All JD Fishways are inspected twice per day during fish passage season, Mar. 1 - Nov. 30.
Additional and frequent monitoring, of the PLC displays in SMF Fisheries Office, as necessary.

John Day Dam	Inspection OOC	Criteria Limit	Total Number of Inspections: 14				Temperature:	71.9 F
							Secchi:	6.0 Ft.
NORTH FISHWAY								
Exit differential	0	≤ 0.5'						
Exit Control weirs	0	High setting						
Count station differential	0	≤ 0.3'						
Entrance differential	0	1.0' - 2.0'	AVG (Ft.)	1.5				
SOUTH FISHWAY								
Exit differential	0	≤ 0.5'						
Exit Control weirs	0	Mid setting						
Count station differential	0	≤ 0.3'						
Weir crest depth (US gauge)	0	1.0' ± 0.1'						
South entrance differential	0	1.0' - 2.0'	AVG (Ft.)	1.3				
Entrance weir SE1	1	depth (≥ 8')	AVG (Ft.)	8.8				
Collection channel velocity	0	1.5 - 4 fps	AVG (Ft.)	2.39				
N. Entrance PH(Bay 19)differential	0	1.0' - 2.0'	AVG (Ft.)	1.7				
Entrance weir NE1	1	depth (≥ 8')	AVG (Ft.)	9.0				
Entrance weir NE2	0	depth (≥ 8')	AVG (Ft.)	9.2				
JUVENILE PASSAGE								
Forebay/bypass conduit differential	0	4.0' - 5.0'	AVG (Ft.)	4.6				
Submersible traveling screens	0	visual inspect						
Turbine trashrack drawdown	0	<1.5', wkly						
Vert barrier screen drawdown	0	<1.2', wkly						
Spill volume	0	per FPP	Avg (kcfs)	12.9	Avg %	10.4		
Spill pattern	0	per FPP						
Turbine Unit Priority	0	per FPP						
Turbine 1% Efficiency	0	per FPP						

Fisheries Related Operations

Smolt Monitoring Operations:

Smolt Monitoring Facility started the 2022 sampling season on April 1 for condition monitoring only. High water temperature protocol went into effect on July 28th when water temperatures exceeded 70°F. Samples will continue to target 100 of the predominant out-migrant smolt on Mondays and Thursdays until daily average river water temperatures fall below 69.5 deg.

Adult Ladder Operations:

Both ladders are operating within criteria. Ladders switched to salmon mode on 7/19.

Project Operations:

Current outages: MU4, MU6, MU7, MU10, MU11.

TSWs were removed on 8/31. From August 15 through November 30, adult fish attraction flow will be provided by spilling through Bay 2 open one stop (approximately 1.6 kcfs) during daylight hours.

Maintenance:

South fish turbine #2 RTS on 8/18.

NFL HVAC unit replaced and returned to service on 6 July - repairs did NOT fully fix the HVAC system and the repairs are currently being investigated

Calibration:

All gauges within the 0.3' criteria.

Bird Data:

Gull and Cormorant numbers are increasing. Grebe and Pelican numbers have decreased.

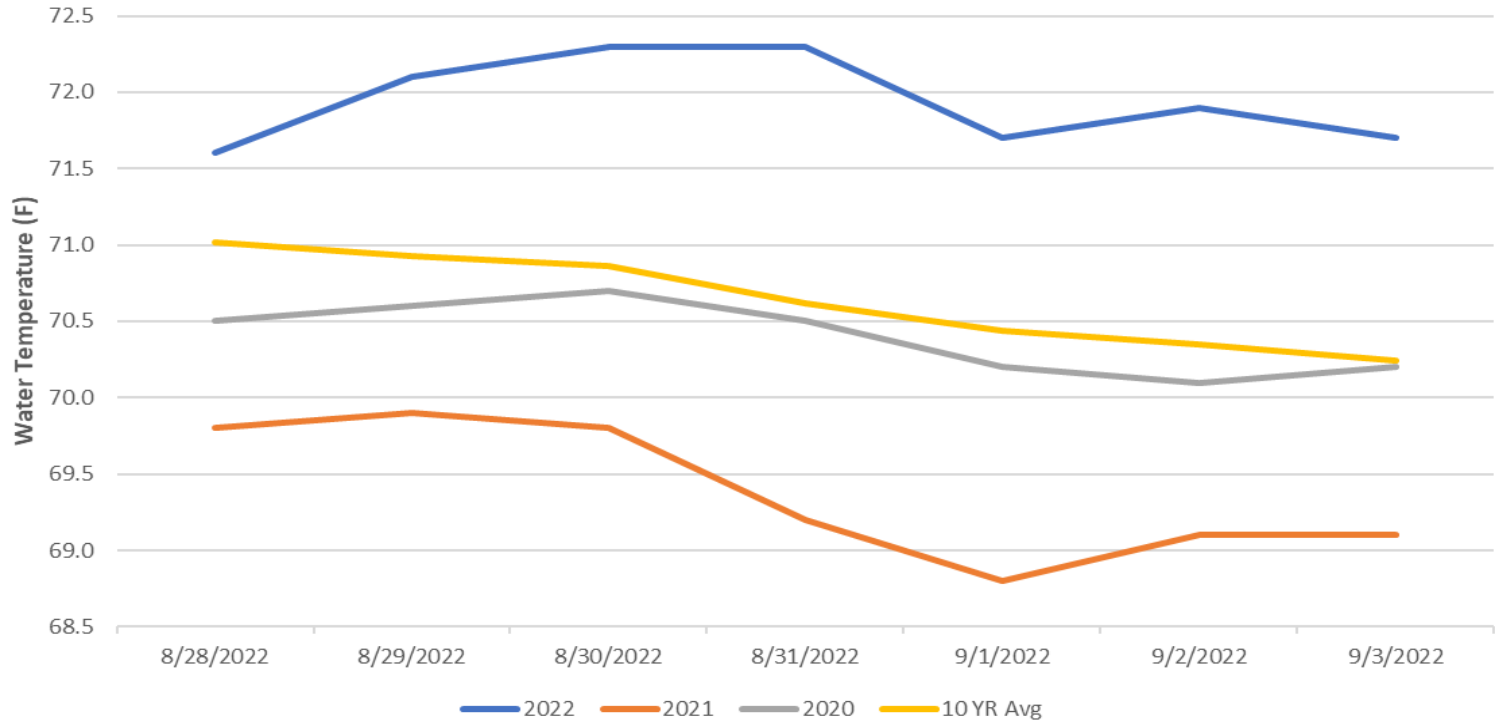
7 of 125 avian lines down.

Research:

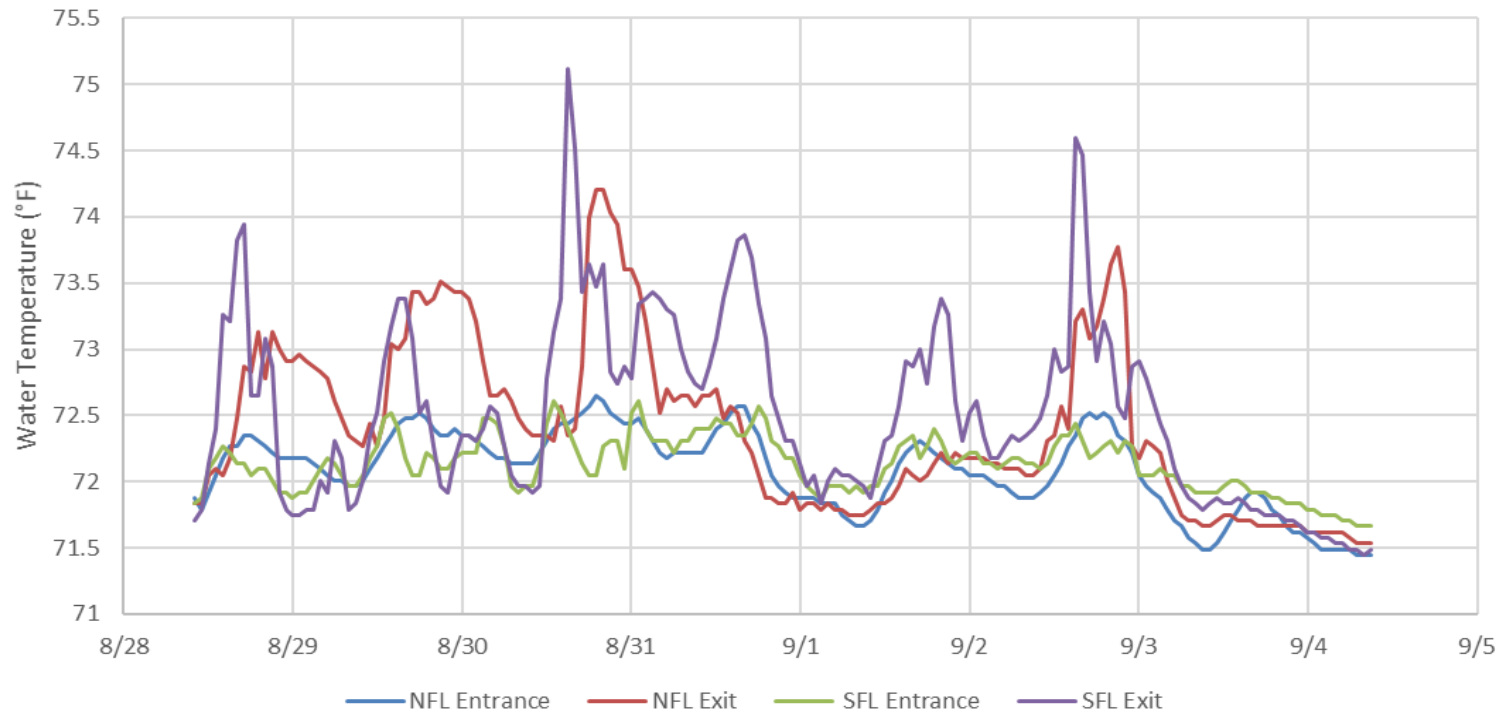
Adult fish counting started April 1.

USGS temperature probes were installed in the forebay on 3/29.

John Day Dam Water Temperature (F)



JDA Ladder Temperatures



JDA Collection Channel Velocity

FPP Criteria: 1.5–4.0 feet per second (2 fps optimum)

Date	Measurement Location	Speed (ft/sec)	SFL Turbine RPMs (1,2,3)	Bay 19 TW (ft)
8/31/2022	Unit 4	2.47	0,68,68	159.5
8/31/2022	Unit 12	2.52	0,68,68	159.5
9/3/2022	Unit 4	2.25	0,68,68	160.5
9/3/2022	Unit 12	2.33	0,68,68	160.5

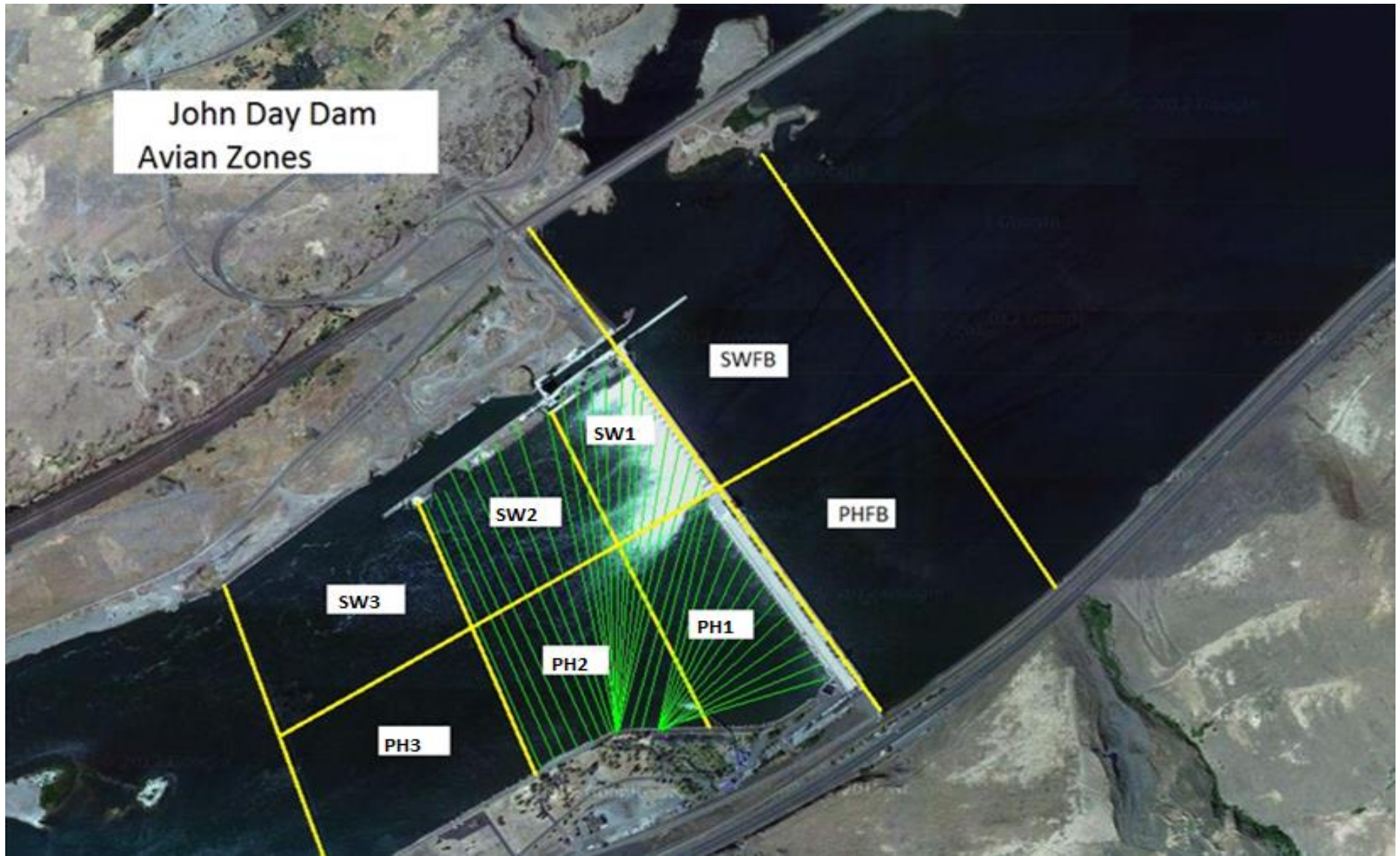
Average Weekly Velocity (ft/sec)	2.39
----------------------------------	------

JOHN DAY WEEKLY AVERAGES

	South Fish Ladder					NFL	JBS	Spill		
	SE1 (Ft)	S.Ent (Ft)	NE1 (Ft)	NE2 (Ft)	Bay19 (Ft)	N.Ent (Ft)	JBS Diff (Ft)	Spill Vol. (kcfs)	Spill %	# Spillbays
Sunday	8.2	1.6	8.2	8.4	1.9	1.6	4.3	21.6	17.9	3
Sunday	9.5	1.1	9.7	10.0	1.6	1.5	4.6	21.5	12.6	3
Monday	8.4	1.3	8.3	8.6	1.8	1.4	4.6	21.6	20.8	3
Monday	8.9	1.3	9.3	9.5	1.9	1.5	4.7	21.6	11.9	3
Tuesday	8.2	1.4	7.8	8.0	1.8	1.4	4.6	21.5	20.0	3
Tuesday	8.1	1.3	8.9	9.1	1.5	1.3	4.7	21.6	19.8	3
Wednesday	8.5	1.4	8.6	8.7	1.8	1.4	4.6	21.1	20.2	3
Wednesday	8.9	1.1	9.7	9.9	1.3	1.4	4.7	21.1	13.9	3
Thursday	8.8	1.2	9.3	9.3	1.7	1.5	4.6	1.5	1.5	1
Thursday	9.1	1.4	10.0	10.1	1.7	1.4	4.3	1.5	1.0	1
Friday	7.7	1.5	8.6	8.7	1.8	1.6	4.7	1.5	1.6	1
Friday	10.1	1.2	9.8	10.0	1.5	1.4	4.5	1.5	1.1	1
Saturday	9.3	1.2	8.8	9.0	1.6	1.4	4.6	1.5	1.8	1
Saturday	9.0	1.2	9.2	9.4	1.6	1.5	4.6	1.5	1.4	1
AVG:	8.8	1.3	9.0	9.2	1.7	1.5	4.6	12.9	10.4	2.1

	Temp (F)	Secchi (Ft)	Average # of Pelicans on Island Per Day
Sunday	71.6	6.0	5
Monday	72.1	6.0	0
Tuesday	72.3	6.0	
Wednesday	72.3	6.0	8
Thursday	71.7	6.0	4
Friday	71.9	6.0	6
Saturday	71.7	6.0	5
AVG	71.9	6.0	5

John Day Dam
Avian Zones



JDA Bird Counts: 8/28/22 to 9/3/22

F(1): Forage AM survey F(2): Forage PM Survey NF(1): Non-Forage AM Survey NF(2): Non-Forage PM Survey

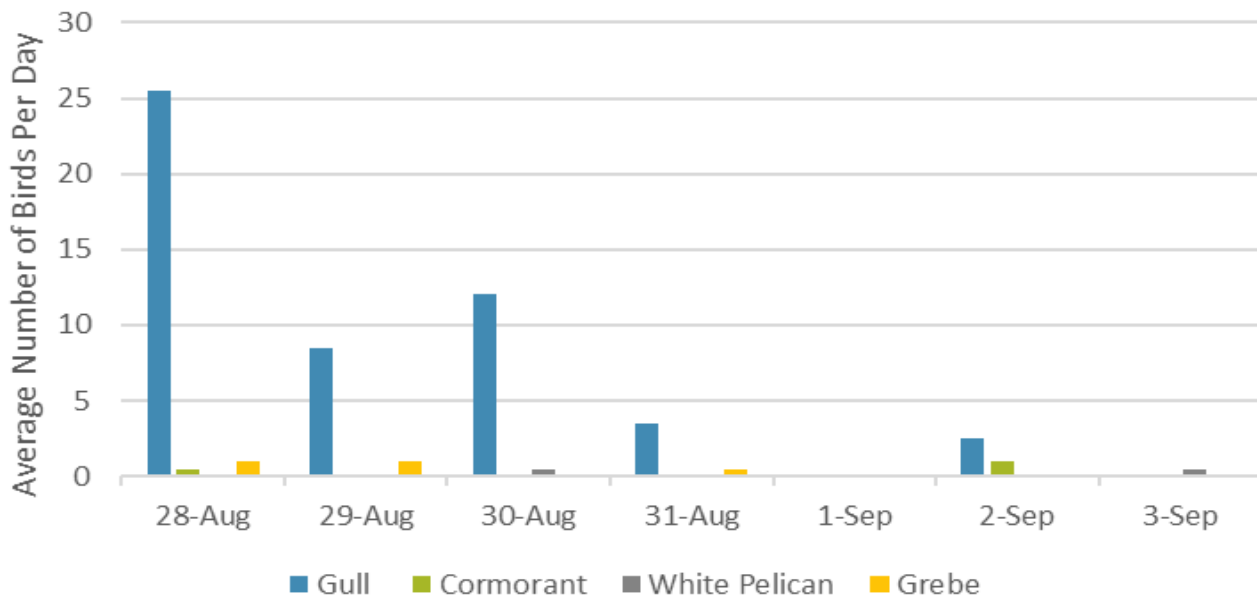
Date	Zone	Gulls				Cormorant				Caspian tern				White Pelican				Grebe				Total
		F(1)	F(2)	NF(1)	NF(2)	F(1)	F(2)	NF(1)	NF(2)	F(1)	F(2)	NF(1)	NF(2)	F(1)	F(2)	NF(1)	NF(2)	F(1)	F(2)	NF(1)	NF(2)	
28-Aug	PHFB	0	0	0	0	0	0	0	6	0	0	0	0	0	0	0	0	2	0	0	0	8
28-Aug	SWFB	0	0	10	45	0	0	0	0	0	0	0	0	0	0	0	0	0	0	0	0	55
28-Aug	PH1	0	0	0	0	0	0	0	0	0	0	0	0	0	0	0	0	0	0	0	0	0
28-Aug	PH2	0	0	0	0	0	0	0	0	0	0	0	0	0	0	0	0	0	0	0	0	0
28-Aug	PH3	32	4	0	0	1	0	16	0	0	0	0	0	0	0	0	0	0	0	0	0	53
28-Aug	SW1	0	0	0	0	0	0	0	0	0	0	0	0	0	0	0	0	0	0	0	0	0
28-Aug	SW2	5	0	9	0	0	0	0	2	0	0	0	0	0	0	0	0	0	0	0	0	16
28-Aug	SW3	4	6	13	0	0	0	0	0	0	0	0	0	0	0	0	0	0	0	0	0	23
Total/Survey		26		39		1		12		0		0		0		0		1		0		78
29-Aug	PHFB	0	0	1	0	0	0	14	0	0	0	0	0	0	0	0	0	2	0	0	0	17
29-Aug	SWFB	0	0	0	44	0	0	0	0	0	0	0	0	0	0	0	0	0	0	0	0	44
29-Aug	PH1	0	0	0	0	0	0	0	0	0	0	0	0	0	0	0	0	0	0	0	0	0
29-Aug	PH2	0	0	0	0	0	0	0	0	0	0	0	0	0	0	0	0	0	0	0	0	0
29-Aug	PH3	5	3	7	0	0	0	0	0	0	0	0	0	0	0	0	0	0	0	0	0	15
29-Aug	SW1	0	0	0	0	0	0	0	0	0	0	0	0	0	0	0	0	0	0	0	0	0
29-Aug	SW2	0	0	0	0	0	0	3	3	0	0	0	0	0	0	0	0	0	0	0	0	6
29-Aug	SW3	7	2	3	0	0	0	0	0	0	0	0	0	0	0	0	0	0	0	0	0	12
Total/Survey		9		28		0		10		0		0		0		0		1		0		47
30-Aug	PHFB	0	0	1	0	0	0	19	2	0	0	0	0	0	0	0	0	0	0	0	0	22
30-Aug	SWFB	0	0	6	53	0	0	0	0	0	0	0	0	0	0	0	0	0	0	0	0	59
30-Aug	PH1	0	0	0	0	0	0	0	0	0	0	0	0	0	0	0	0	0	0	0	0	0
30-Aug	PH2	0	0	0	0	0	0	0	0	0	0	0	0	0	0	0	0	0	0	0	0	0
30-Aug	PH3	20	0	8	0	0	0	0	0	0	0	0	0	1	0	0	0	0	0	0	0	29
30-Aug	SW1	0	0	0	0	0	0	0	0	0	0	0	0	0	0	0	0	0	0	0	0	0
30-Aug	SW2	0	0	4	0	0	0	1	0	0	0	0	0	0	0	0	0	0	0	0	0	5
30-Aug	SW3	4	0	9	0	0	0	0	0	0	0	0	0	0	0	0	0	0	0	0	0	13
Total/Survey		12		41		0		11		0		0		1		0		0		0		64
31-Aug	PHFB	0	0	0	0	0	0	11	0	0	0	0	0	0	0	0	0	0	1	0	0	12
31-Aug	SWFB	0	0	10	27	0	0	0	0	0	0	0	0	0	0	0	0	0	0	0	0	37
31-Aug	PH1	0	0	0	0	0	0	0	0	0	0	0	0	0	0	0	0	0	0	0	0	0
31-Aug	PH2	0	0	0	0	0	0	0	0	0	0	0	0	0	0	0	0	0	0	0	0	0
31-Aug	PH3	0	0	5	0	0	0	10	0	0	0	0	0	0	0	0	0	0	0	0	0	15
31-Aug	SW1	0	0	0	0	0	0	0	0	0	0	0	0	0	0	0	0	0	0	0	0	0
31-Aug	SW2	0	0	0	0	0	0	0	0	0	0	0	0	0	0	0	0	0	0	0	0	0
31-Aug	SW3	7	0	5	0	0	0	0	0	0	0	0	0	0	0	0	0	0	0	0	0	12
Total/Survey		4		24		0		11		0		0		0		0		1		0		38

JDA Bird Counts: 9/1/22 to 9/3/22

F(1): Forage AM survey F(2): Forage PM Survey NF(1): Non-Forage AM Survey NF(2): Non-Forage PM Survey

Date	Zone	Gulls				Cormorant				Caspian tern				White Pelican				Grebe				Total
		F(1)	F(2)	NF(1)	NF(2)	F(1)	F(2)	NF(1)	NF(2)	F(1)	F(2)	NF(1)	NF(2)	F(1)	F(2)	NF(1)	NF(2)	F(1)	F(2)	NF(1)	NF(2)	
1-Sep	PHFB	0	0	1	0	0	0	4	0	0	0	0	0	0	0	0	0	0	0	0	0	5
1-Sep	SWFB	0	0	30	12	0	0	0	0	0	0	0	0	0	0	0	0	0	0	0	0	42
1-Sep	PH1	0	0	0	0	0	0	0	0	0	0	0	0	0	0	0	0	0	0	0	0	0
1-Sep	PH2	0	0	0	0	0	0	0	0	0	0	0	0	0	0	0	0	0	0	0	0	0
1-Sep	PH3	0	0	0	0	0	0	0	0	0	0	0	0	0	0	0	0	0	0	0	0	0
1-Sep	SW1	0	0	0	0	0	0	0	0	0	0	0	0	0	0	0	0	0	0	0	0	0
1-Sep	SW2	0	0	0	0	0	0	0	0	0	0	0	0	0	0	0	0	0	0	0	0	0
1-Sep	SW3	0	0	0	0	0	0	0	0	0	0	0	0	0	0	0	0	0	0	0	0	0
Total/Survey		0	0	22	0	0	0	2	0	0	0	0	0	0	0	0	0	0	0	0	0	24
2-Sep	PHFB	0	0	1	0	0	0	19	0	0	0	0	0	0	0	0	0	0	0	0	0	20
2-Sep	SWFB	0	0	37	0	0	0	0	0	0	0	0	0	0	0	0	0	0	0	0	0	37
2-Sep	PH1	5	0	0	0	1	0	0	0	0	0	0	0	0	0	0	0	0	0	0	0	6
2-Sep	PH2	0	0	0	0	0	0	0	0	0	0	0	0	0	0	0	0	0	0	0	0	0
2-Sep	PH3	0	0	0	0	0	0	0	0	0	0	0	0	0	0	0	0	0	0	0	0	0
2-Sep	SW1	0	0	0	0	0	1	0	0	0	0	0	0	0	0	0	0	0	0	0	0	1
2-Sep	SW2	0	0	0	0	0	0	0	13	0	0	0	0	0	0	0	0	0	0	0	0	13
2-Sep	SW3	0	0	0	0	0	0	5	0	0	0	0	0	0	0	0	0	0	0	0	0	5
Total/Survey		3	0	19	0	1	0	19	0	0	0	0	0	0	0	0	0	0	0	0	0	41
3-Sep	PHFB	0	0	1	2	0	0	1	1	0	0	0	0	0	0	0	0	0	0	0	0	5
3-Sep	SWFB	0	0	34	127	0	0	0	0	0	0	0	0	0	0	0	0	0	0	0	0	161
3-Sep	PH1	0	0	0	0	0	0	0	0	0	0	0	0	0	0	0	0	0	0	0	0	0
3-Sep	PH2	0	0	0	0	0	0	0	0	0	0	0	0	0	0	0	0	0	0	0	0	0
3-Sep	PH3	0	0	0	0	0	0	0	0	0	0	0	0	0	0	0	0	0	0	0	0	0
3-Sep	SW1	0	0	0	0	0	0	0	0	0	0	0	0	0	0	0	0	0	0	0	0	0
3-Sep	SW2	0	0	0	0	0	0	4	15	0	0	0	0	0	0	0	0	0	0	0	0	19
3-Sep	SW3	0	0	0	0	0	0	0	0	0	0	0	0	1	0	0	0	0	0	0	0	1
Total/Survey		0	0	82	0	0	0	11	0	0	0	0	0	1	0	0	0	0	0	0	0	93
Totals		Gulls				Cormorant				Caspian tern				White Pelican				Grebe				Total
		F	F	NF	NF	F	F	NF	NF	F	F	NF	NF	F	F	NF	NF	F	F	NF	NF	
Weekly Total		104	0	505	0	3	0	149	0	0	0	0	0	2	0	0	0	5	0	0	0	
Avg/Survey		7	0	36	0	0	0	11	0	0	0	0	0	0	0	0	0	0	0	0	0	55

Foraging Piscivorous Birds



Non-Foraging Piscivorous Birds

