

FISHWAY STATUS REPORT - JOHN DAY DAM

Date: 5/21/2022

Inspection Period: 5/15/2022 thru 5/21/2022



**US Army Corps
of Engineers**
Portland District

JD/WC Project-Fisheries
P.O. Box 823
Rufus, Oregon 97050
Phone: 541-506-7860

All JD Fishways are inspected twice per day during fish passage season, Mar. 1 - Nov. 30.
Additional and frequent monitoring, of the PLC displays in SMF Fisheries Office, as necessary.

John Day Dam	Inspection OOC	Criteria Limit	Total Number of Inspections: 13				Temperature:	53.8 F
						Secchi:	4.6 Ft.	

NORTH FISHWAY

Exit differential	0	≤ 0.5'							
Exit Control weirs	0	High setting							
Count station differential	0	≤ 0.3'							
Entrance differential	0	1.0' - 2.0'	AVG (Ft.)	1.4					

SOUTH FISHWAY

Exit differential	0	≤ 0.5'							
Exit Control weirs	0	Mid setting							
Count station differential	0	≤ 0.3'							
Weir crest depth (US gauge)	0	1.0' ± 0.1'							
South entrance differential	0	1.0' - 2.0'	AVG (Ft.)	1.4					
Entrance weir SE1	0	depth (≥ 8')	AVG (Ft.)	10.0					
Collection channel velocity	0	1.5 - 4 fps	AVG (Ft.)	3.07					
N. Entrance PH(Bay 19)differential	0	1.0' - 2.0'	AVG (Ft.)	1.5					
Entrance weir NE1	0	depth (≥ 8')	AVG (Ft.)	11.5					
Entrance weir NE2	0	depth (≥ 8')	AVG (Ft.)	11.3					

JUVENILE PASSAGE

Forebay/bypass conduit differential	0	4.0' - 5.0'	AVG (Ft.)	4.5					
Submersible traveling screens	0	visual inspect	next visual inspection 5/23 - 5/26						
Turbine trashrack drawdown	0	<1.5', wkly							
Vert barrier screen drawdown	0	<1.5', wkly							
Spill volume	0	per FPP	AVG (kcfs)	175.6	Avg %	69.9			
Spill pattern	0	per FPP							
Turbine Unit Priority	0	per FPP							
Turbine 1% Efficiency	0	per FPP							

Fisheries Related Operations

Smolt Monitoring Operations:

Smolt Monitoring Facility started the 2022 sampling season on April 1 for condition monitoring only. From April 1 - June 15 condition sampling will occur 5 days a week (Monday-Friday) from approximately 0700-1300 or until the target of 100 fish of the predominant species has been reached. From June 16 - September 15 condition sampling will occur 3 days a week (Monday, Wednesday, Friday) from approximately 0700-1300 or until the target of 100 fish of the predominant species has been reached. High water temperature protocol goes into effect when water temperatures exceed 70F.

Adult Ladder Operations:

Both ladders are operating within criteria.

Project Operations:

Current outages: MU3, MU4, MU7, MU15.

Spring spill started April 10 along with the Caspian tern forebaby operation for the Blalock islands.

USDA avian hazing started 16 April.

Tailwater average weekly TDG: 122.1

Maintenance:

South fish turbine #2 was forced out of service on 30 March with an excessive vibration issue. Pumps 1 & 3 are running.

MU 15 was FOOS on 14 May.

Calibration:

All gauges within the 0.3' criteria.

Bird Data:

Cormorants have dispersed. Gull numbers continue to increase with more foraging observed in the tailrace. Pelican numbers starting to increase on Preacher's Island, with a few seen foraging in the tailrace. Grebe numbers are decreasing slightly, mainly in PHFB. (see 'Bird Count' tab for details).

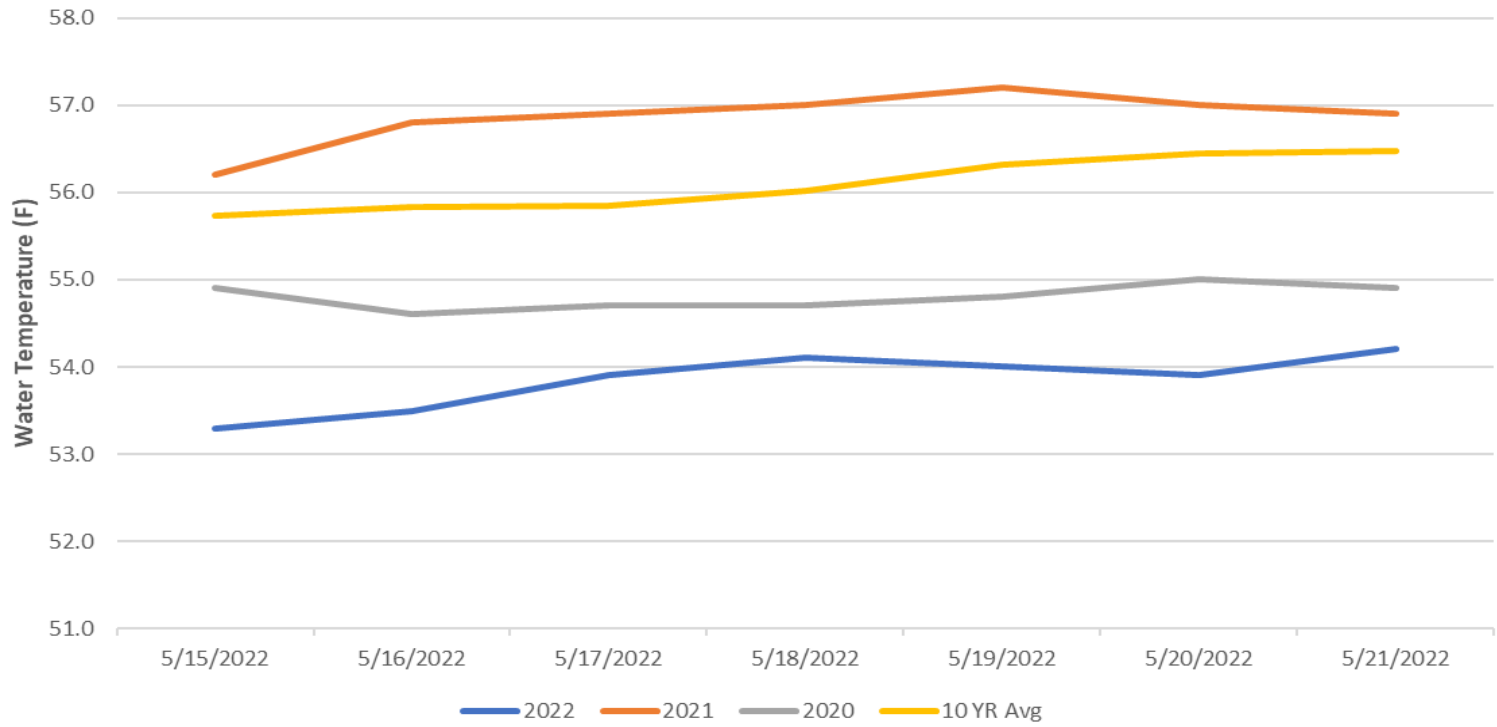
1 of 125 avian lines down.

Pelicans on Preacher's Island: averaged 11 per day

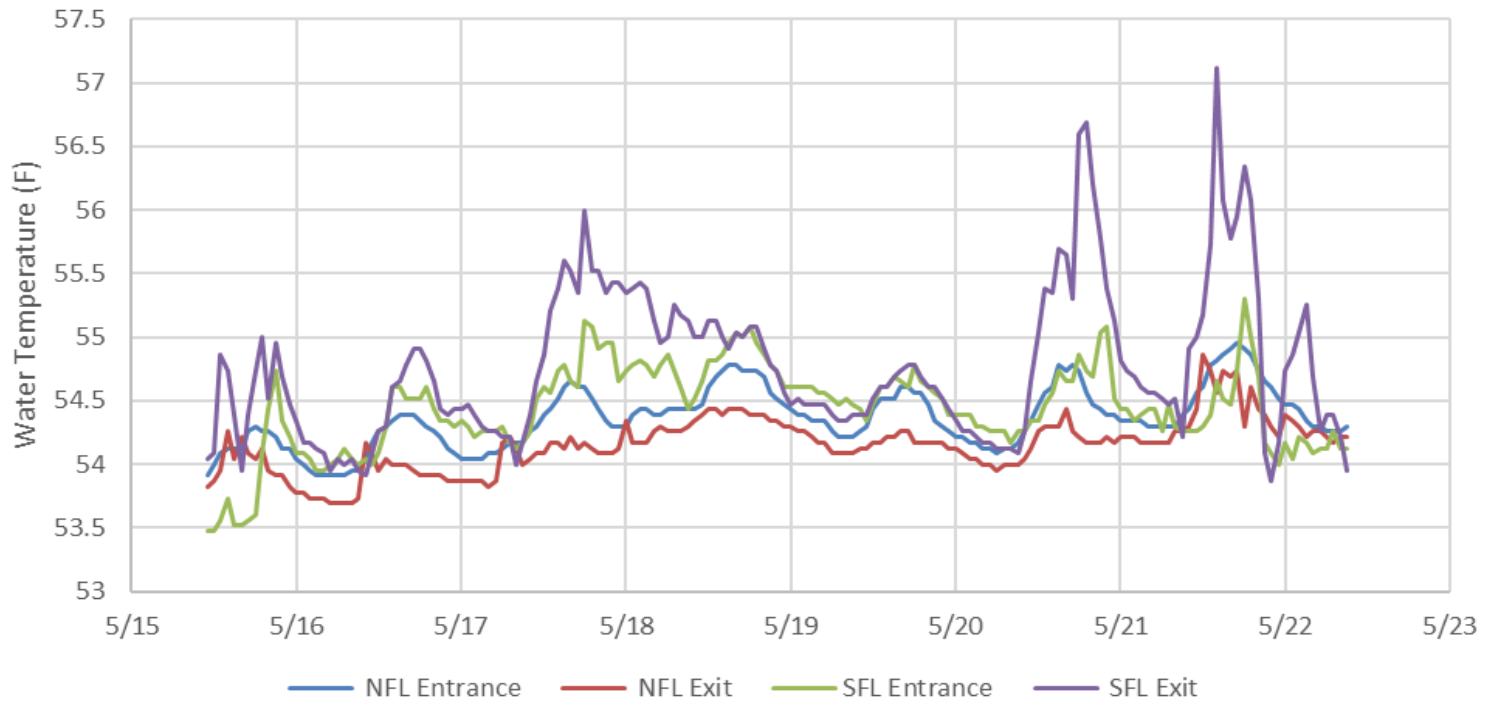
Research:

Adult fish counting started April 1. USGS temperature probes were installed in the forebay on 3/29.

John Day Dam Water Temperature (F)



JDA Ladder Temperatures



JDA Collection Channel Velocity

FPP Criteria: 1.5–4.0 feet per second (2 fps optimum)

Date	Measurement Location	Speed (ft/sec)	SFL Turbine RPMs (1,2,3)	Bay 19 TW (ft)
5/19/2022	Unit 4	2.98	68,0,68	161.3
5/19/2022	Unit 12	2.85	68,0,68	161.3
5/20/2022	Unit 4	3.19	68,0,68	163.8
5/20/2022	Unit 12	3.41	68,0,68	163.8
5/21/2022	Unit 4	2.96	68,0,68	161.1
5/21/2022	Unit 12	3.01	68,0,68	161.1

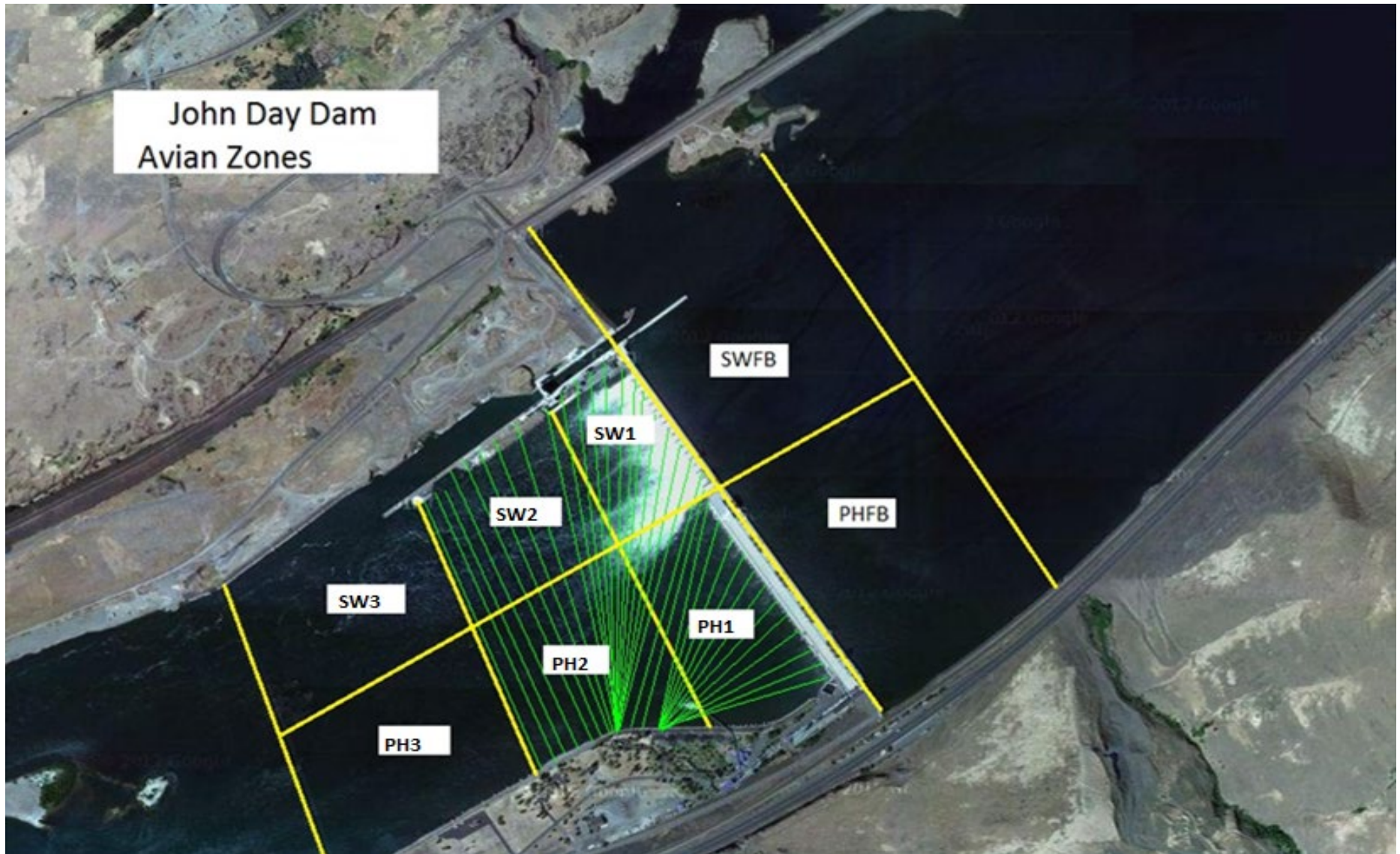
Average Weekly Velocity (ft/sec)	3.07
----------------------------------	------

JOHN DAY WEEKLY AVERAGES

	NE1 (Ft)	NE2 (Ft)	S.Ent (Ft)	SE1 (Ft)	N.Ent (Ft)	JBS Diff (Ft)	Bay19 (Ft)	Spill Vol. (kcfs)	Spill %	# Spillbays
Sunday	11.6	11.4	1.0	10.8	1.4	4.6	1.6	195.3	78.9	19
Sunday	10.3	10.1	1.7	8.7	1.4	4.4	1.8	195.8	79.3	19
Monday	12.0	11.8	1.2	10.5	1.4	4.7	1.7			
Monday										
Tuesday	10.7	10.5	1.7	8.9	1.6	4.5	1.5	194.9	79.3	19
Tuesday	11.1	10.9	1.5	9.2	1.7	4.6	1.7	194.9	79.2	19
Wednesday	11.4	11.2	1.7	9.7	1.6	4.5	1.5	204.1	80.1	19
Wednesday	11.5	11.3	1.3	10.0	1.3	4.5	1.3	204.4	79.7	19
Thursday	12.3	12.1	1.2	10.7	1.5	4.6	1.3	84.8	31.5	19
Thursday	11.1	11.0	1.3	9.6	1.2	4.5	1.2	169.8	79.6	19
Friday	13.3	13.1	1.2	12.0	1.2	4.7	1.4	94.1	31.5	19
Friday	11.2	11.0	1.4	9.8	1.5	4.5	1.4	124.8	65.7	19
Saturday	12.3	12.1	1.1	10.6	1.3	4.4	1.2	222.3	79.2	19
Saturday	11.2	11.0	1.4	9.8	1.5	4.5	1.7	221.8	74.7	19
AVG:	11.5	11.3	1.4	10.0	1.4	4.5	1.5	175.6	69.9	19.0

	Temp (F)	Secchi (Ft)	Fallbacks	Average # of Pelicans on Island Per Day
Sunday	53.3	4.5	N/A	10
Monday	53.5	4.0	0	
Tuesday	53.9	5.0	7	4
Wednesday	54.1	4.5	0	3
Thursday	54.0	5.0	1	3
Friday	53.9	4.5	2	30
Saturday	54.2	4.5	N/A	15
AVG	53.8	4.6	2	11

John Day Dam
Avian Zones



JDA Bird Counts: 5/15/22 to 5/21/22

F(1): Forage AM survey F(2): Forage PM Survey NF(1): Non-Forage AM Survey NF(2): Non-Forage PM Survey

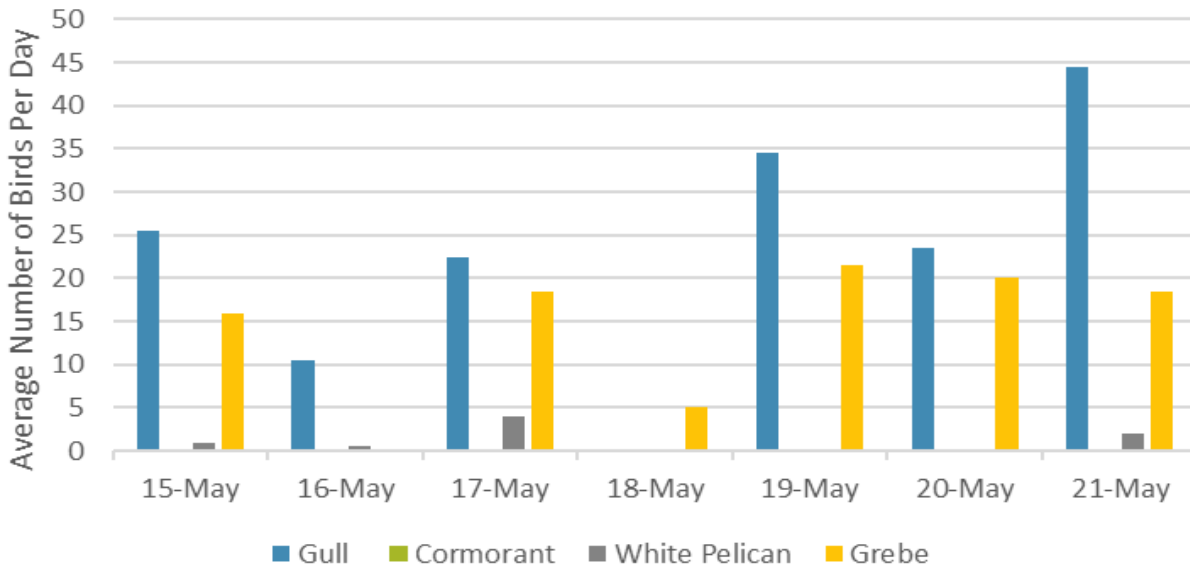
Date	Zone	Gulls				Cormorant				Caspian tern				White Pelican				Grebe				Total
		F(1)	F(2)	NF(1)	NF(2)	F(1)	F(2)	NF(1)	NF(2)	F(1)	F(2)	NF(1)	NF(2)	F(1)	F(2)	NF(1)	NF(2)	F(1)	F(2)	NF(1)	NF(2)	
15-May	PHFB	0	0	15	2	0	0	0	0	0	0	0	0	0	0	0	0	16	16	0	0	49
15-May	SWFB	0	0	0	13	0	0	0	0	0	0	0	0	0	0	0	0	0	0	0	0	13
15-May	PH1	0	0	0	0	0	0	0	0	0	0	0	0	0	0	0	0	0	0	0	0	0
15-May	PH2	0	0	0	0	0	0	0	0	0	0	0	0	0	0	0	0	0	0	0	0	0
15-May	PH3	0	3	0	0	0	0	0	0	0	0	0	0	0	0	0	0	0	0	0	0	3
15-May	SW1	0	0	0	0	0	0	0	0	0	0	0	0	0	0	0	0	0	0	0	0	0
15-May	SW2	0	4	0	0	0	0	0	0	0	0	0	0	0	0	0	0	0	0	0	0	4
15-May	SW3	16	28	0	0	0	0	0	0	0	0	0	0	2	0	0	0	0	0	0	0	46
Total/Survey		26		15		0		0		0		0		1		0		16		0		58
16-May	PHFB	0	0	0	0	0	0	0	0	0	0	0	0	0	0	0	0	0	0	0	0	0
16-May	SWFB	0	0	0	0	0	0	0	0	0	0	0	0	0	0	0	0	0	0	0	0	0
16-May	PH1	0	0	0	0	0	0	0	0	0	0	0	0	0	0	0	0	0	0	0	0	0
16-May	PH2	0	0	0	0	0	0	0	0	0	0	0	0	0	0	0	0	0	0	0	0	0
16-May	PH3	6	0	0	0	0	0	0	0	0	0	0	0	0	0	0	0	0	0	0	0	6
16-May	SW1	0	0	0	0	0	0	0	0	0	0	0	0	0	0	0	0	0	0	0	0	0
16-May	SW2	4	0	0	0	0	0	0	0	0	0	0	0	1	0	0	0	0	0	0	0	5
16-May	SW3	11	0	0	0	0	0	0	0	0	0	0	0	0	0	0	0	0	0	0	0	11
Total/Survey		11		0		0		0		0		0		1		0		0		0		11
17-May	PHFB	0	0	0	0	0	0	0	0	0	0	0	0	0	0	0	0	0	18	0	0	18
17-May	SWFB	0	0	16	29	0	0	0	0	0	0	0	0	0	0	0	0	19	0	0	0	64
17-May	PH1	0	0	0	0	0	0	0	0	0	0	0	0	0	0	0	0	0	0	0	0	0
17-May	PH2	0	0	0	0	0	0	0	0	0	0	0	0	0	0	0	0	0	0	0	0	0
17-May	PH3	0	0	0	0	0	0	0	0	0	0	0	0	0	0	0	0	0	0	0	0	0
17-May	SW1	0	0	0	0	0	0	0	0	0	0	0	0	0	0	0	0	0	0	0	0	0
17-May	SW2	0	0	0	0	0	0	0	0	0	0	0	0	0	0	0	0	0	0	0	0	0
17-May	SW3	7	38	0	0	0	0	0	0	0	0	0	0	8	0	0	0	0	0	0	0	53
Total/Survey		23		23		0		0		0		0		4		0		19		0		68
18-May	PHFB	0	0	0	0	0	0	0	0	0	0	0	0	0	0	0	0	10	0	0	0	10
18-May	SWFB	0	0	0	1	0	0	0	0	0	0	0	0	0	0	0	0	0	0	0	0	1
18-May	PH1	0	0	0	0	0	0	0	0	0	0	0	0	0	0	0	0	0	0	0	0	0
18-May	PH2	0	0	0	0	0	0	0	0	0	0	0	0	0	0	0	0	0	0	0	0	0
18-May	PH3	0	0	0	0	0	0	0	0	0	0	0	0	0	0	0	0	0	0	0	0	0
18-May	SW1	0	0	0	0	0	0	0	0	0	0	0	0	0	0	0	0	0	0	0	0	0
18-May	SW2	0	0	0	0	0	0	0	0	0	0	0	0	0	0	0	0	0	0	0	0	0
18-May	SW3	0	0	0	0	0	0	0	0	0	0	0	0	0	0	0	0	0	0	0	0	0
Total/Survey		0		1		0		0		0		0		0		0		5		0		6

JDA Bird Counts: 5/19/22 to 5/21/22

F(1): Forage AM survey F(2): Forage PM Survey NF(1): Non-Forage AM Survey NF(2): Non-Forage PM Survey

Date	Zone	Gulls				Cormorant				Caspian tern				White Pelican				Grebe				Total
		F(1)	F(2)	NF(1)	NF(2)	F(1)	F(2)	NF(1)	NF(2)	F(1)	F(2)	NF(1)	NF(2)	F(1)	F(2)	NF(1)	NF(2)	F(1)	F(2)	NF(1)	NF(2)	
19-May	PHFB	0	0	4	0	0	0	0	0	0	0	0	0	0	0	0	0	20	22	0	0	46
19-May	SWFB	0	0	0	15	0	0	0	0	0	0	0	0	0	0	0	0	1	0	0	0	16
19-May	PH1	0	0	0	0	0	0	0	0	0	0	0	0	0	0	0	0	0	0	0	0	0
19-May	PH2	0	0	0	0	0	0	0	0	0	0	0	0	0	0	0	0	0	0	0	0	0
19-May	PH3	0	0	0	0	0	0	0	0	0	0	0	0	0	0	0	0	0	0	0	0	0
19-May	SW1	0	0	0	0	0	0	0	0	0	0	0	0	0	0	0	0	0	0	0	0	0
19-May	SW2	2	10	0	0	0	0	0	0	0	0	0	0	0	0	0	0	0	0	0	0	12
19-May	SW3	32	25	0	0	0	0	0	0	0	0	0	0	0	0	0	0	0	0	0	0	57
Total/Survey		35		10		0		0		0		0		0		0		22		0		66
20-May	PHFB	0	0	0	0	0	0	0	0	0	0	0	0	0	0	0	0	0	20	0	0	20
20-May	SWFB	0	0	0	27	0	0	0	0	0	0	0	0	0	0	0	0	20	0	0	0	47
20-May	PH1	0	0	0	0	0	0	0	0	0	0	0	0	0	0	0	0	0	0	0	0	0
20-May	PH2	0	0	0	0	0	0	0	0	0	0	0	0	0	0	0	0	0	0	0	0	0
20-May	PH3	0	0	0	0	0	0	0	0	0	0	0	0	0	0	0	0	0	0	0	0	0
20-May	SW1	0	0	0	0	0	0	0	0	0	0	0	0	0	0	0	0	0	0	0	0	0
20-May	SW2	8	0	0	0	0	0	0	0	0	0	0	0	0	0	0	0	0	0	0	0	8
20-May	SW3	14	25	0	0	0	0	0	0	0	0	0	0	0	0	0	0	0	0	0	0	39
Total/Survey		24		14		0		0		0		0		0		0		20		0		57
21-May	PHFB	0	0	0	0	0	0	0	0	0	0	0	0	0	0	0	0	22	15	0	0	37
21-May	SWFB	0	0	13	52	0	0	0	0	0	0	0	0	0	0	0	0	0	0	0	0	65
21-May	PH1	0	0	0	0	0	0	0	0	0	0	0	0	0	0	0	0	0	0	0	0	0
21-May	PH2	0	0	0	0	0	0	0	0	0	0	0	0	0	0	0	0	0	0	0	0	0
21-May	PH3	0	0	0	0	0	0	0	0	0	0	0	0	0	0	0	0	0	0	0	0	0
21-May	SW1	0	0	0	0	0	0	0	0	0	0	0	0	0	0	0	0	0	0	0	0	0
21-May	SW2	0	18	0	0	0	0	0	0	0	0	0	0	0	0	0	0	0	0	0	0	18
21-May	SW3	26	45	0	0	0	0	0	0	0	0	0	0	0	4	0	0	0	0	0	0	75
Total/Survey		45		33		0		0		0		0		2		0		19		0		98
Totals		Gulls				Cormorant				Caspian tern				White Pelican				Grebe				Total
		F		NF		F		NF		F		NF		F		NF		F		NF		
Weekly Total		322		187		0		0		0		0		15		0		199		0		362
Avg/Survey		23		13		0		0		0		0		1		0		14		0		52

Foraging Piscivorous Birds



Non-Foraging Piscivorous Birds

