

FISHWAY STATUS REPORT - JOHN DAY DAM

Date: 4/16/2022

Inspection Period: 4/10/2022 thru 4/16/2022



**US Army Corps
of Engineers**
Portland District

JD/WC Project-Fisheries
P.O. Box 823
Rufus, Oregon 97050
Phone: 541-506-7860

All JD Fishways are inspected twice per day during fish passage season, Mar. 1 - Nov. 30.
Additional and frequent monitoring, of the PLC displays in SMF Fisheries Office, as necessary.

John Day Dam	Inspection OOC	Criteria Limit	Total Number of Inspections: 14				Temperature: 47.3 F	Secchi: 5.0 Ft.
NORTH FISHWAY								
Exit differential	0	≤ 0.5'						
Exit Control weirs	0	High setting						
Count station differential	0	≤ 0.3'						
Entrance differential	0	1.0' - 2.0'	AVG (Ft.)	1.6				
SOUTH FISHWAY								
Exit differential	0	≤ 0.5'						
Exit Control weirs	0	Mid setting						
Count station differential	0	≤ 0.3'						
Weir crest depth (US gauge)	0	1.0' ± 0.1'						
South entrance differential	0	1.0' - 2.0'	AVG (Ft.)	1.4				
Entrance weir SE1	0	depth (≥ 8')	AVG (Ft.)	9.1				
Collection channel velocity	0	1.5 - 4 fps	AVG (Ft.)	2.67				
N. Entrance PH(Bay 19)differential	0	1.0' - 2.0'	AVG (Ft.)	1.6				
Entrance weir NE1	0	depth (≥ 8')	AVG (Ft.)	9.5				
Entrance weir NE2	0	depth (≥ 8')	AVG (Ft.)	9.3				
JUVENILE PASSAGE								
Forebay/bypass conduit differential	0	4.0' - 5.0'	AVG (Ft.)	4.6				
Submersible traveling screens	0	visual inspect						
Turbine trashrack drawdown	0	<1.5', wkly						
Vert barrier screen drawdown	0	<1.5', wkly						
Spill volume	0	per FPP	Avg (kcfs)	76.3	Avg %	50.7		
Spill pattern	0	per FPP						
Turbine Unit Priority	0	per FPP						
Turbine 1% Efficiency	0	per FPP						

Fisheries Related Operations

Smolt Monitoring Operations:

Smolt Monitoring Facility started the 2022 sampling season on April 1 for condition monitoring only. From April 1 - June 15 condition sampling will occur 5 days a week (Monday-Friday) from approximately 0700-1300 or until the target of 100 fish of the predominant species has been reached. From June 16 - September 15 condition sampling will occur 3 days a week (Monday, Wednesday, Friday) from approximately 0700-1300 or until the target of 100 fish of the predominant species has been reached. High water temperature protocol goes into effect when water temperatures exceed 70F.

Adult Ladder Operations:

Both ladders are operating within criteria.

Project Operations:

Current outages: MU3, MU4, MU7, MU11.

Spring spill started April 10 along with the Caspian tern forebaby operation for the Blalock islands.

USDA avian hazing started 16 April.

Tailwater average weekly TDG: 115

Maintenance:

South fish turbine #2 was forced out of service on 30 March with an excessive vibration issue. Pumps 1 & 3 are running.

Calibration:

All gauges within the 0.3' criteria.

Bird Data:

Cormorant numbers are decreasing, mainly roosting on rocks in SW2 or PHFB towers. Gull numbers minimal. A few pelicans seen occasionally resting on Preacher's Island. Grebe numbers are increasing, mainly in PHFB. (see 'Bird Count' tab for details).

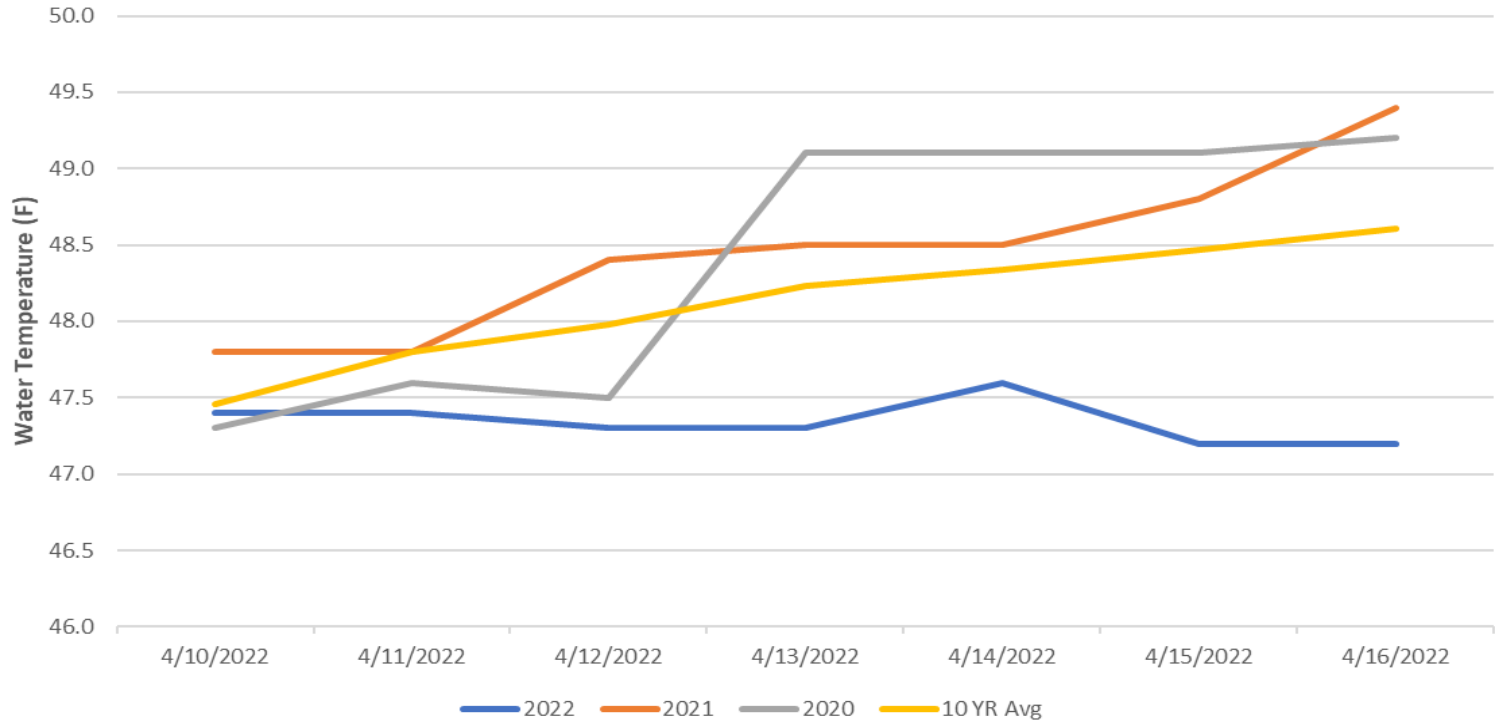
1 of 125 avian lines down. The 7 lines that were broken by the BPA line repair were replaced on 3/29. USDA hazing started 4/16.

Pelicans on Preacher's Island: averaged 3 per day

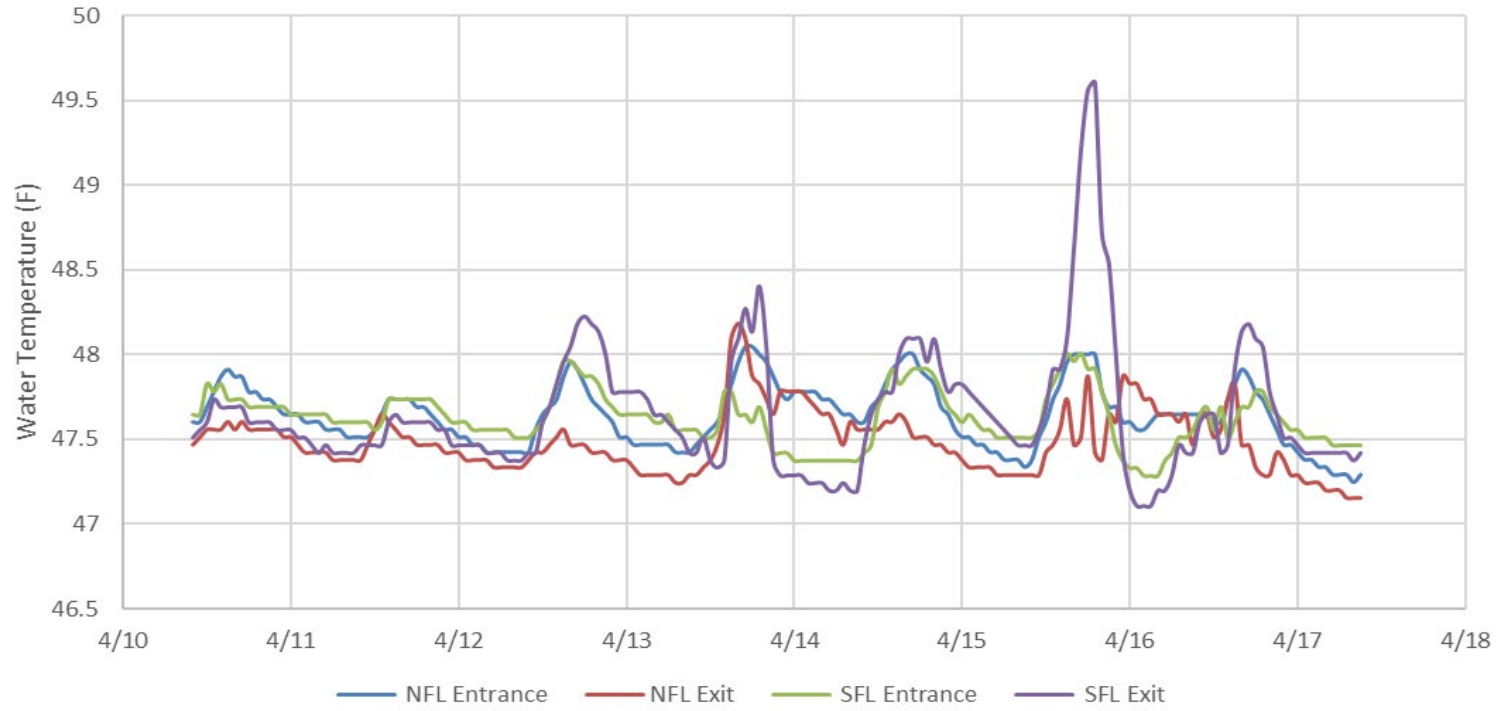
Research:

Adult fish counting started April 1. USGS temperature probes were installed in the forebay on 3/29.

John Day Dam Water Temperature (F)



JDA Ladder Temperatures



JDA Collection Channel Velocity

FPP Criteria: 1.5–4.0 feet per second (2 fps optimum)

Date	Measurement Location	Speed (ft/sec)	SFL Turbine RPMs (1,2,3)	Bay 19 TW (ft)
4/11/2022	Unit 4	2.64	68,0,68	159.3
4/11/2022	Unit 12	2.73	68,0,68	159.3
4/14/2022	Unit 4	2.46	68,0,68	160.0
4/14/2022	Unit 12	2.53	68,0,68	160.0
4/16/2022	Unit 4	2.81	68,0,68	159.1
4/16/2022	Unit 12	2.85	68,0,68	159.1

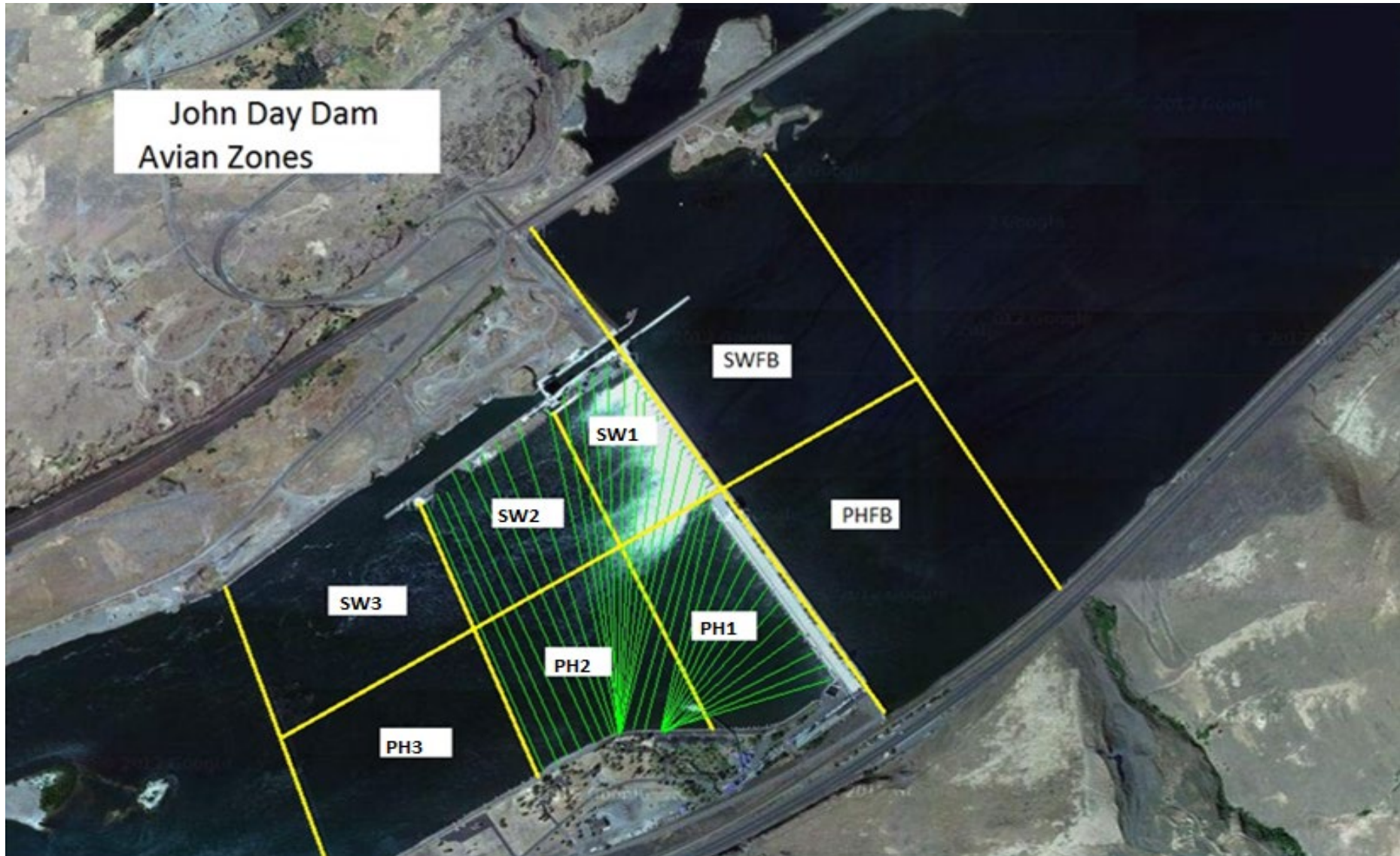
Average Weekly Velocity (ft/sec)	2.67
----------------------------------	------

JOHN DAY WEEKLY AVERAGES

	NE1 (Ft)	NE2 (Ft)	S.Ent (Ft)	SE1 (Ft)	N.Ent (Ft)	JBS Diff (Ft)	Bay19 (Ft)	Spill Vol. (kcfs)	Spill %	# Spillbays
Sunday	8.3	8.1	1.4	8.1	1.4	4.5	1.7	45.0	32.4	17
Sunday	8.8	8.6	1.3	8.6	1.8	4.5	1.9	89.0	63.4	19
Monday	10.1	9.8	1.1	9.5	1.4	4.5	1.3	54.8	32.0	19
Monday	9.0	9.0	1.2	9.0	1.7	4.5	1.3	119.0	70.1	19
Tuesday	9.7	9.6	1.3	9.5	1.5	4.6	1.7	49.9	29.3	18
Tuesday	9.4	9.3	1.3	9.0	1.5	4.6	1.5	108.0	68.4	19
Wednesday	10.7	10.5	1.2	10.1	1.6	4.5	1.3	54.1	32.3	19
Wednesday	9.7	9.5	1.2	9.5	1.5	4.7	1.6	120.1	70.2	19
Thursday	9.7	9.5	1.0	9.4	1.2	4.6	1.6	99.8	65.8	18
Thursday	9.4	9.2	1.6	8.9	1.9	4.6	1.7	99.8	65.5	18
Friday	10.1	9.9	1.5	9.4	1.4	4.6	1.6	42.0	32.1	15
Friday	9.2	9.0	1.6	8.7	1.8	4.7	1.7	79.0	60.4	18
Saturday	9.0	8.8	1.6	8.5	1.5	4.6	1.9	37.8	32.0	13
Saturday	9.2	9.0	1.6	8.7	1.8	4.7	1.8	69.2	56.3	19
AVG:	9.5	9.3	1.4	9.1	1.6	4.6	1.6	76.3	50.7	17.9

	Temp (F)	Secchi (Ft)	Fallbacks	Average # of Pelicans on Island Per Day
Sunday	47.4	5.0	N/A	
Monday	47.4	5.0	4	4
Tuesday	47.3	5.0	0	3
Wednesday	47.3	5.0	0	
Thursday	47.6	5.0	0	
Friday	47.2	5.0	3	
Saturday	47.2	5.0	N/A	3
AVG	47.3	5.0	1	3

John Day Dam
Avian Zones

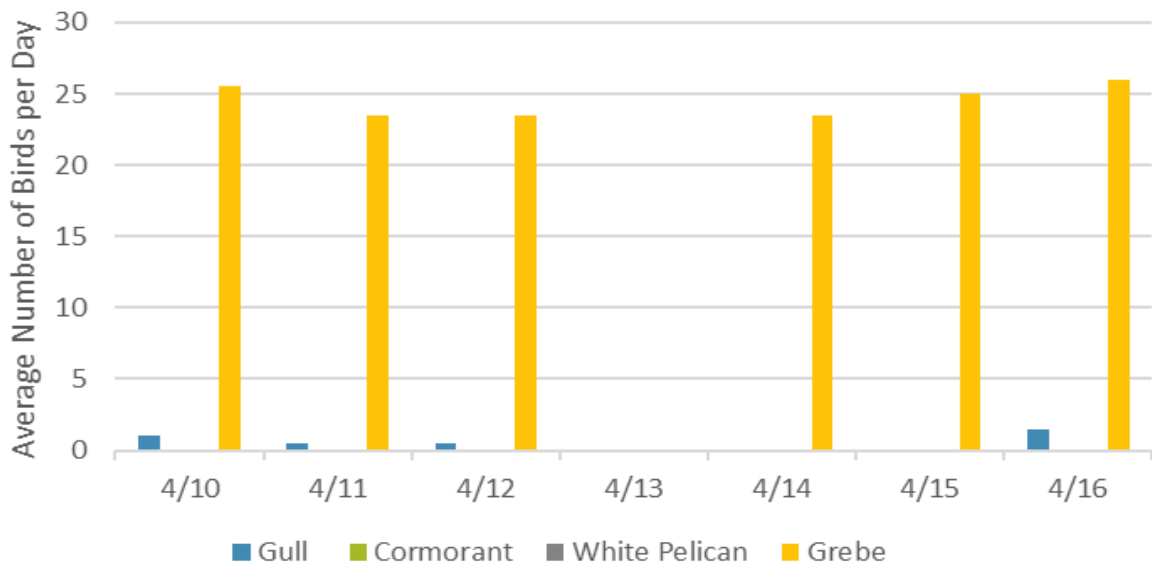


JDA Bird Counts: 4/14/22 to 4/16/22

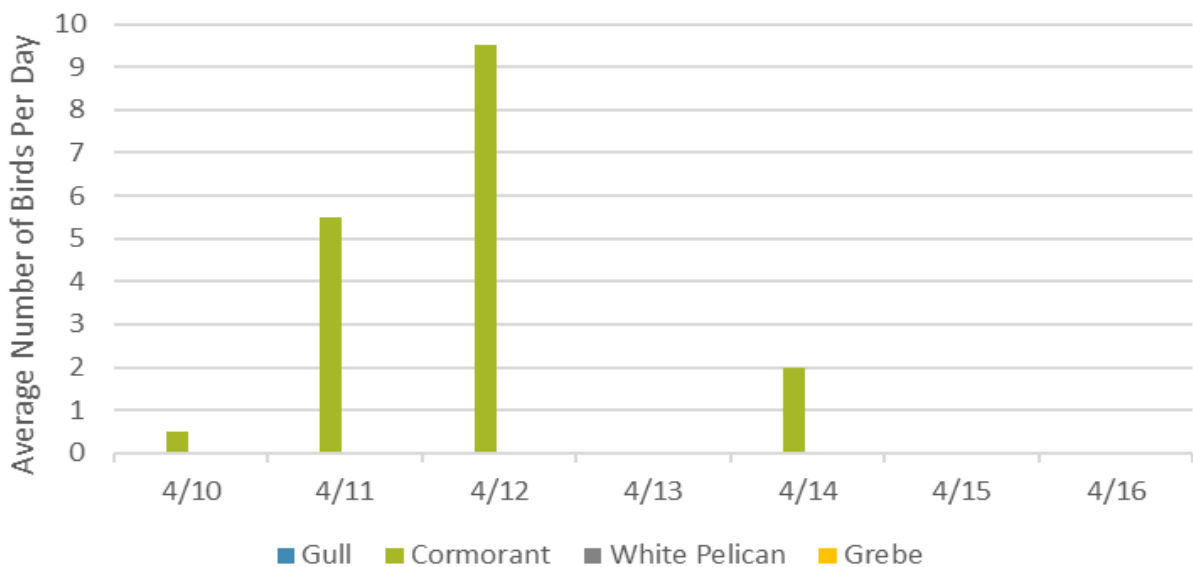
F(1): Forage AM survey F(2): Forage PM Survey NF(1): Non-Forage AM Survey NF(2): Non-Forage PM Survey

Date	Zone	Gulls				Cormorant				Caspian tern				White Pelican				Grebe				Total	
		F(1)	F(2)	NF(1)	NF(2)	F(1)	F(2)	NF(1)	NF(2)	F(1)	F(2)	NF(1)	NF(2)	F(1)	F(2)	NF(1)	NF(2)	F(1)	F(2)	NF(1)	NF(2)		
14-Apr	PHFB	0	0	0	0	0	0	4	0	0	0	0	0	0	0	0	0	26	21	0	0	51	
14-Apr	SWFB	0	0	0	0	0	0	0	0	0	0	0	0	0	0	0	0	0	0	0	0	0	0
14-Apr	PH1	0	0	0	0	0	0	0	0	0	0	0	0	0	0	0	0	0	0	0	0	0	0
14-Apr	PH2	0	0	0	0	0	0	0	0	0	0	0	0	0	0	0	0	0	0	0	0	0	0
14-Apr	PH3	0	0	0	0	0	0	0	0	0	0	0	0	0	0	0	0	0	0	0	0	0	0
14-Apr	SW1	0	0	0	0	0	0	0	0	0	0	0	0	0	0	0	0	0	0	0	0	0	0
14-Apr	SW2	0	0	0	0	0	0	0	0	0	0	0	0	0	0	0	0	0	0	0	0	0	0
14-Apr	SW3	0	0	0	0	0	0	0	0	0	0	0	0	0	0	0	0	0	0	0	0	0	0
Total/Survey		0	0	0	0	0	0	2	0	0	0	0	0	0	0	0	24	0	0	0	0	26	
15-Apr	PHFB	0	0	0	0	0	0	0	0	0	0	0	0	0	0	0	29	21	0	0	0	0	50
15-Apr	SWFB	0	0	0	0	0	0	0	0	0	0	0	0	0	0	0	0	0	0	0	0	0	0
15-Apr	PH1	0	0	0	0	0	0	0	0	0	0	0	0	0	0	0	0	0	0	0	0	0	0
15-Apr	PH2	0	0	0	0	0	0	0	0	0	0	0	0	0	0	0	0	0	0	0	0	0	0
15-Apr	PH3	0	0	0	0	0	0	0	0	0	0	0	0	0	0	0	0	0	0	0	0	0	0
15-Apr	SW1	0	0	0	0	0	0	0	0	0	0	0	0	0	0	0	0	0	0	0	0	0	0
15-Apr	SW2	0	0	0	0	0	0	0	0	0	0	0	0	0	0	0	0	0	0	0	0	0	0
15-Apr	SW3	0	0	0	0	0	0	0	0	0	0	0	0	0	0	0	0	0	0	0	0	0	0
Total/Survey		0	0	0	0	0	0	0	0	0	0	0	0	0	0	0	25	0	0	0	0	25	
16-Apr	PHFB	0	3	0	0	0	0	0	0	0	0	0	0	0	0	30	22	0	0	0	0	0	55
16-Apr	SWFB	0	0	0	0	0	0	0	0	0	0	0	0	0	0	0	0	0	0	0	0	0	0
16-Apr	PH1	0	0	0	0	0	0	0	0	0	0	0	0	0	0	0	0	0	0	0	0	0	0
16-Apr	PH2	0	0	0	0	0	0	0	0	0	0	0	0	0	0	0	0	0	0	0	0	0	0
16-Apr	PH3	0	0	0	0	0	0	0	0	0	0	0	0	0	0	0	0	0	0	0	0	0	0
16-Apr	SW1	0	0	0	0	0	0	0	0	0	0	0	0	0	0	0	0	0	0	0	0	0	0
16-Apr	SW2	0	0	0	0	0	0	0	0	0	0	0	0	0	0	0	0	0	0	0	0	0	0
16-Apr	SW3	0	0	0	0	0	0	0	0	0	0	0	0	0	0	0	0	0	0	0	0	0	0
Total/Survey		2	0	0	0	0	0	0	0	0	0	0	0	0	0	26	0	0	0	0	0	28	
Totals	Gulls				Cormorant				Caspian tern				White Pelican				Grebe				Total		
	F	NF	F	NF	F	NF	F	NF	F	NF	F	NF	F	NF	F	NF	F	NF					
Weekly Total	7	0	0	35	0	0	0	0	0	0	0	0	0	0	294	0	0	0	0	168			
Avg/Survey	1	0	0	3	0	0	0	0	0	0	0	0	0	0	21	0	0	0	0	24			

Foraging Piscivorous Birds



Non-Foraging Piscivorous Birds





TSWs opened on 4/10/22