

FISHWAY STATUS REPORT - JOHN DAY DAM

Date: 3/12/2022

Inspection Period: 3/6/2022 thru 3/12/2022



**US Army Corps
of Engineers**
Portland District

JD/WC Project-Fisheries
P.O. Box 823
Rufus, Oregon 97050
Phone: 541-506-7860

All JD Fishways are inspected twice per day during fish passage season, Mar. 1 - Nov. 30.
Additional and frequent monitoring, of the PLC displays in SMF Fisheries Office, as necessary.

John Day Dam	Inspection OOC	Criteria Limit	Total Number of Inspections: 14				Temperature:	39.8 F
							Secchi:	6.0 Ft.
NORTH FISHWAY								
Exit differential	0	≤ 0.5'						
Exit Control weirs	0	High setting						
Count station differential	0	≤ 0.3'						
Entrance differential	0	1.0' - 2.0'	AVG (Ft.)	1.5				
SOUTH FISHWAY								
Exit differential	0	≤ 0.5'						
Exit Control weirs	0	Mid setting						
Count station differential	0	≤ 0.3'						
Weir crest depth (US gauge)	0	1.0' ± 0.1'						
South entrance differential	0	1.0' - 2.0'	AVG (Ft.)	1.3				
Entrance weir SE1	1	depth (≥ 8')	AVG (Ft.)	8.6				
Collection channel velocity	0	1.5 - 4 fps	AVG (Ft.)	2.67				
N. Entrance PH(Bay 19)differential	0	1.0' - 2.0'	AVG (Ft.)	1.6				
Entrance weir NE1	0	depth (≥ 8')	AVG (Ft.)	9.6				
Entrance weir NE2	0	depth (≥ 8')	AVG (Ft.)	9.8				
JUVENILE PASSAGE								
Forebay/bypass conduit differential	0	4.0' - 5.0'	AVG (Ft.)	N/A				
Submersible traveling screens	0	visual inspect	STSs removed for winter maintenance					
Turbine trashrack drawdown	0	<1.5', wkly						
Vert barrier screen drawdown	0	<1.5', wkly						
Spill volume	0	per FPP	Avg (kcfs)	0.0	Avg %	0.0		
Spill pattern	0	per FPP						
Turbine Unit Priority	0	per FPP						
Turbine 1% Efficiency	0	per FPP						

Fisheries Related Operations

Smolt Monitoring Operations:

Tainter gate joint seal replaced. All PM"s to PDS and screen cleaner complete. Maintenance on charcoal filtration system continues.

Adult Ladder Operations:

South fish ladder is operating within criteria. North Fish Ladder was dewatered on 3/7 to fix the entrance channel sensor still well and returned to service on 3/10

Project Operations:

Current outages: SMF, JBS, MU3, MU4, MU7, MU12.

Adult fish passage season started 1 March.

Maintenance:

Calibration:

All gauges within the 0.3' criteria.

Bird Data:

Cormorant numbers are steady around 30, mainly roosting on rocks in SW2. Gull numbers minimal. A pelican seen occasionally resting on Preacher's Island or PH3. Grebes have dispersed. (see 'Bird Count' tab for details).

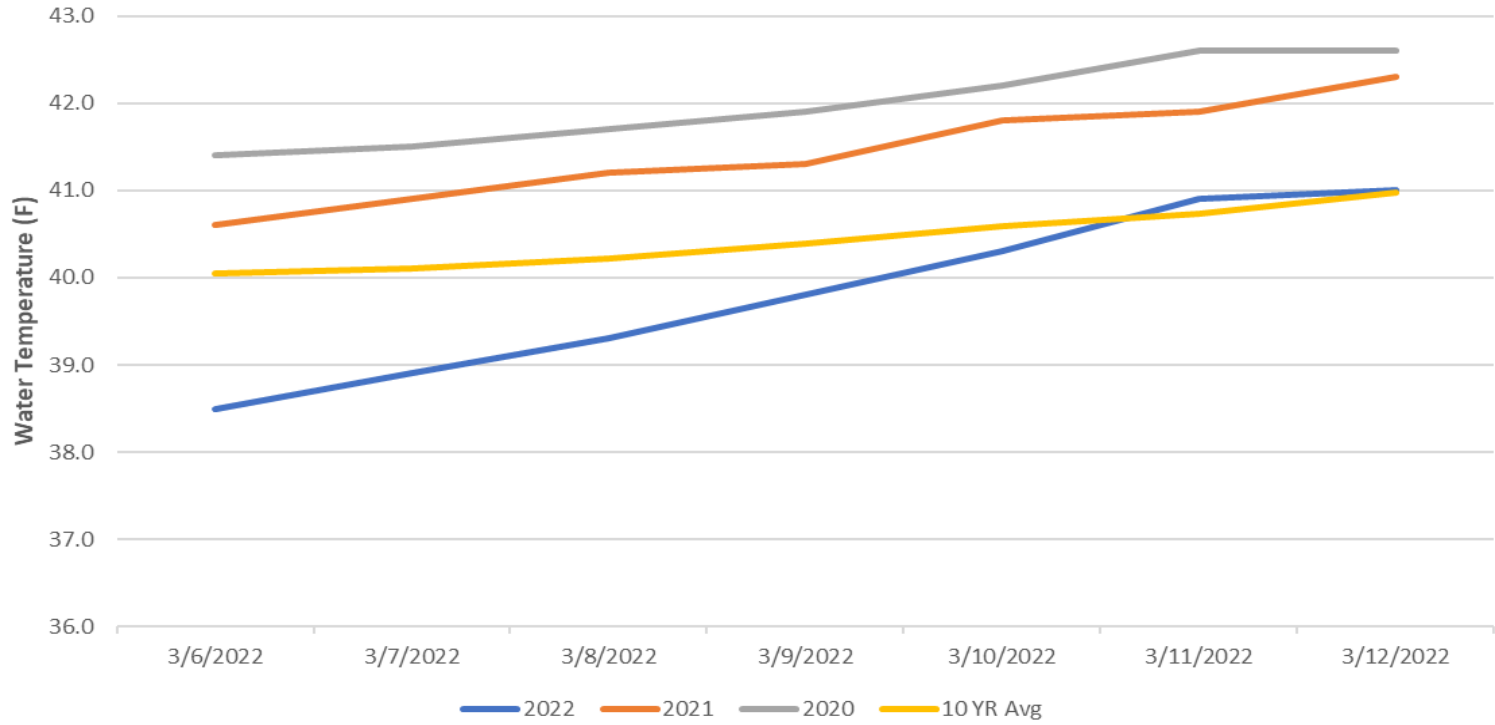
8 of 125 avian lines down. The 7 lines that were broken by the BPA line repair are scheduled to be replaced by the end of March.

Pelicans on Preacher's Island: averaged 0 per day

Research:

None

John Day Dam Water Temperature (F)



JDA Collection Channel Velocity

FPP Criteria: 1.5–4.0 feet per second (2 fps optimum)

Date	Measurement Location	Speed (ft/sec)	SFL Turbine RPMs (1,2,3)	Bay 19 TW (ft)
3/11/2022	Unit 4	2.63	0,68,68	160.7
3/11/2022	Unit 12	2.77	0,68,68	160.7
3/12/2022	Unit 4	2.64	0,68,68	160.3
3/12/2022	Unit 12	2.64	0,68,68	160.3

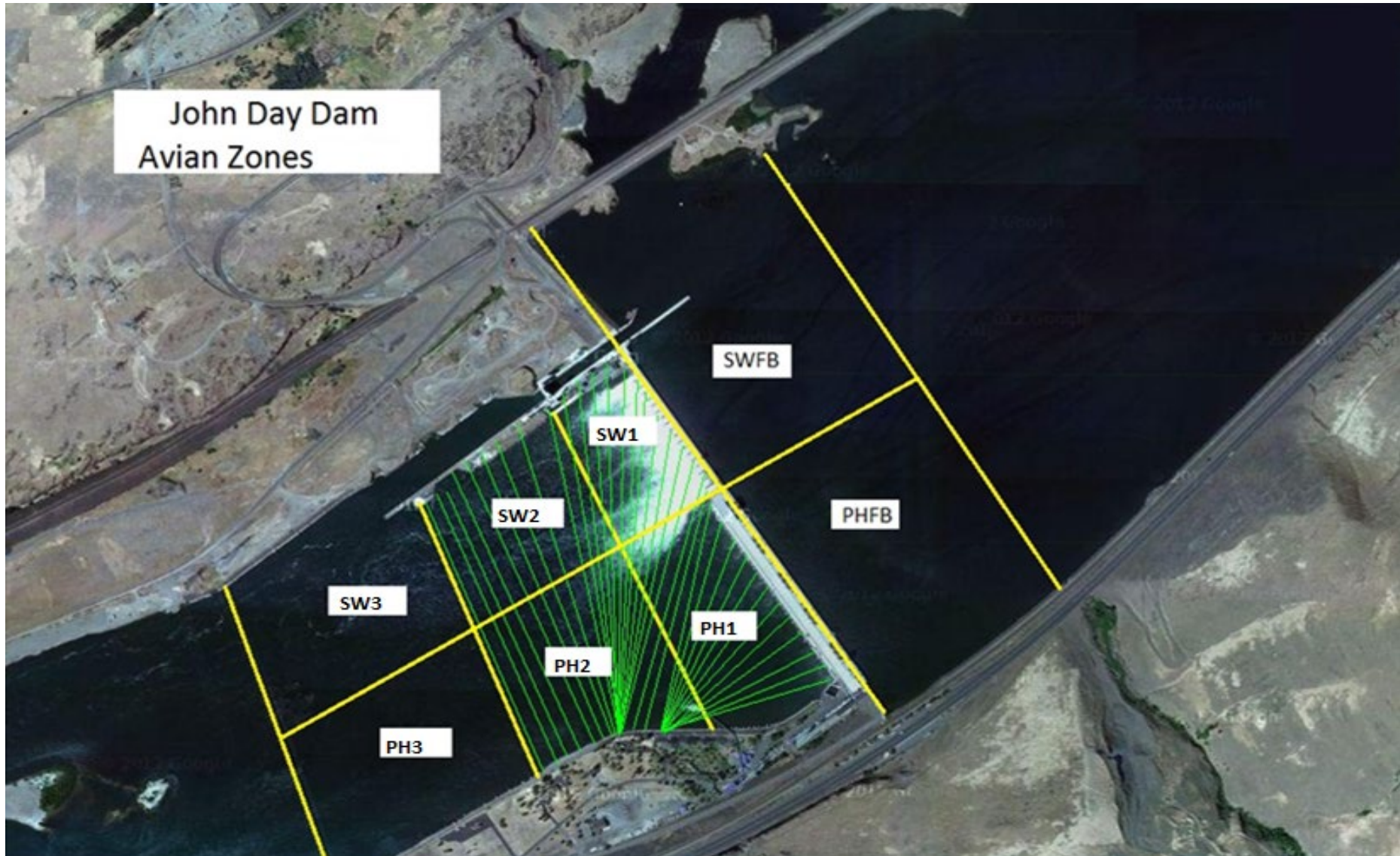
Average Weekly Velocity (ft/sec)	2.67
----------------------------------	------

JOHN DAY WEEKLY AVERAGES

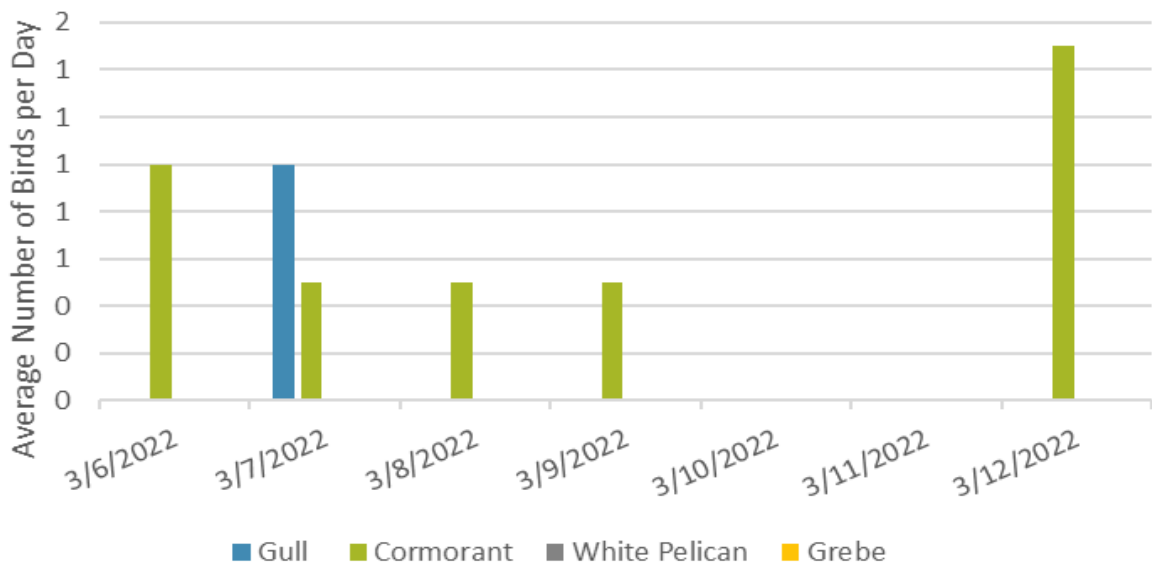
	NE1 (Ft)	NE2 (Ft)	S.Ent (Ft)	SE1 (Ft)	N.Ent (Ft)	JBS Diff (Ft)	Bay19 (Ft)	Spill Vol. (kcfs)	Spill %	# Spillbays
Sunday	9.5	9.7	1.3	8.5			1.8	0.0	0.0	0
Sunday	9.6	9.9	1.2	8.6			1.7	0.0	0.0	0
Monday	10.0	10.2	1.2	9.1			1.7	0.0	0.0	0
Monday	9.5	9.7	1.6	8.4			1.5	0.0	0.0	0
Tuesday	9.9	10.1	1.4	8.3			1.7	0.0	0.0	0
Tuesday	9.8	10.0	1.2	8.3			1.5	0.0	0.0	0
Wednesday	9.5	9.8	1.3	7.9			1.7	0.0	0.0	0
Wednesday	10.0	10.3	1.7	10.5			1.7	0.0	0.0	0
Thursday	9.4	9.7	1.2	8.4	1.5		1.5	0.0	0.0	0
Thursday	9.5	9.8	1.4	8.2	1.5		1.4	0.0	0.0	0
Friday	9.8	10.0	1.2	8.6	1.6		1.2	0.0	0.0	0
Friday	9.6	9.9	1.1	8.7	1.5		1.7	0.0	0.0	0
Saturday	9.3	9.2	1.4	8.3	1.5		1.8	0.0	0.0	0
Saturday	9.5	9.3	1.2	8.5	1.5		1.8	0.0	0.0	0
AVG:	9.6	9.8	1.3	8.6	1.5	N/A	1.6	0.0	0.0	0.0

	Temp (F)	Secchi (Ft)	Fallbacks	Average # of Pelicans on Island Per Day
Sunday	38.5	6.0	N/A	0
Monday	38.9	6.0	N/A	0
Tuesday	39.3	6.0	N/A	0
Wednesday	39.8	6.0	N/A	0
Thursday	40.3	6.0	N/A	0
Friday	40.9	6.0	N/A	0
Saturday	41.0	6.0	N/A	0
AVG	39.8	6.0	N/A	0

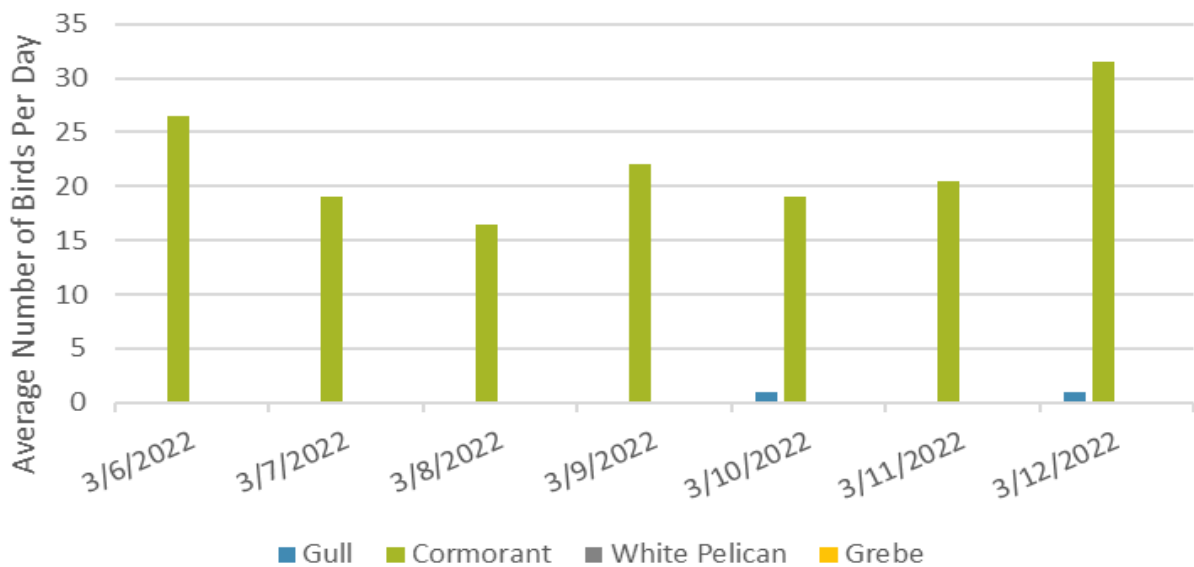
John Day Dam
Avian Zones



Foraging Piscivorous Birds



Non-Foraging Piscivorous Birds





Adult Steelhead with floy tag rescued from the North Fish Ladder dewatering on 3/7/22. Returned to the river in good condition.