

FISHWAY STATUS REPORT - JOHN DAY DAM

Date: 3/5/2022

Inspection Period: 2/27/2022 thru 3/5/2022



**US Army Corps
of Engineers**
Portland District

JD/WC Project-Fisheries
P.O. Box 823
Rufus, Oregon 97050
Phone: 541-506-7860

All JD Fishways are inspected twice per day during fish passage season, Mar. 1 - Nov. 30.
Additional and frequent monitoring, of the PLC displays in SMF Fisheries Office, as necessary.

John Day Dam	Inspection OOC	Criteria Limit	Total Number of Inspections: 11				Temperature:	38.0 F
						Secchi:	5.5 Ft.	

NORTH FISHWAY

Exit differential	0	≤ 0.5'							
Exit Control weirs	0	High setting							
Count station differential	0	≤ 0.3'							
Entrance differential	0	1.0' - 2.0'	AVG (Ft.)	1.2					

SOUTH FISHWAY

Exit differential	0	≤ 0.5'							
Exit Control weirs	0	Mid setting	SFL RTS 2/28						
Count station differential	0	≤ 0.3'							
Weir crest depth (US gauge)	0	1.0' ± 0.1'							
South entrance differential	0	1.0' - 2.0'	AVG (Ft.)	1.2					
Entrance weir SE1	0	depth (≥ 8')	AVG (Ft.)	9.0					
Collection channel velocity	0	1.5 - 4 fps	AVG (Ft.)	2.67					
N. Entrance PH(Bay 19)differential	0	1.0' - 2.0'	AVG (Ft.)	1.6					
Entrance weir NE1	0	depth (≥ 8')	AVG (Ft.)	9.9					
Entrance weir NE2	0	depth (≥ 8')	AVG (Ft.)	9.9					

JUVENILE PASSAGE

Forebay/bypass conduit differential	0	4.0' - 5.0'	AVG (Ft.)	N/A					
Submersible traveling screens	0	visual inspect	STSs removed for winter maintenance						
Turbine trashrack drawdown	0	<1.5', wkly							
Vert barrier screen drawdown	0	<1.5', wkly							
Spill volume	0	per FPP	AVG (kcfs)	0.0	Avg %	0.0			
Spill pattern	0	per FPP							
Turbine Unit Priority	0	per FPP							
Turbine 1% Efficiency	0	per FPP							

Fisheries Related Operations

Smolt Monitoring Operations:

Adult Ladder Operations:

South fish ladder is operating within criteria, RTS 2/28. North Fish Ladder set to orifice flow on 3/5 at 1700 to prepare for dewatering on 3/7 to fix the entrance channel sensor still well.

Project Operations:

Current outages: SMF, JBS, MU3, MU4, MU7, MU12.
Navlock RTS 3/5.

Maintenance:

Calibration:

All gauges within the 0.3' criteria.

Bird Data:

Cormorant numbers are steady around 30, mainly roosting on rocks in SW2. Gull numbers minimal. A pelican seen occasionally resting on Preacher's Island or PH3. Grebes have dispersed. (see 'Bird Count' tab for details).

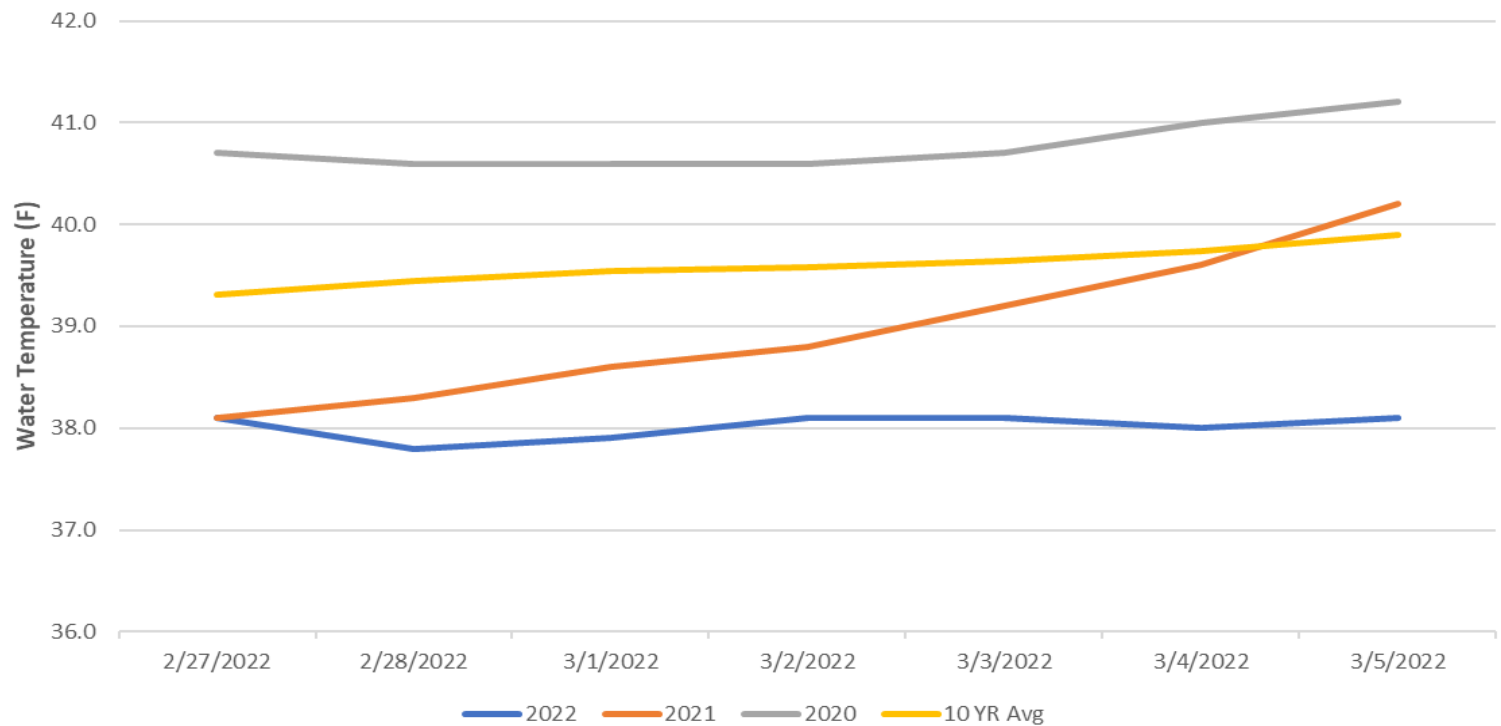
8 of 125 avian lines down. The 7 lines that were broken by the BPA line repair are scheduled to be replaced by the end of March.

Pelicans on Preacher's Island: averaged 0 per day

Research:

None

John Day Dam Water Temperature (F)



JDA Collection Channel Velocity

FPP Criteria: 1.5–4.0 feet per second (2 fps optimum)

Date	Measurement Location	Speed (ft/sec)	SFL Turbine RPMs (1,2,3)	Bay 19 TW (ft)
3/5/2022	Unit 4	2.62	0,68,68	160.7
3/5/2022	Unit 12	2.72	0,68,68	160.7

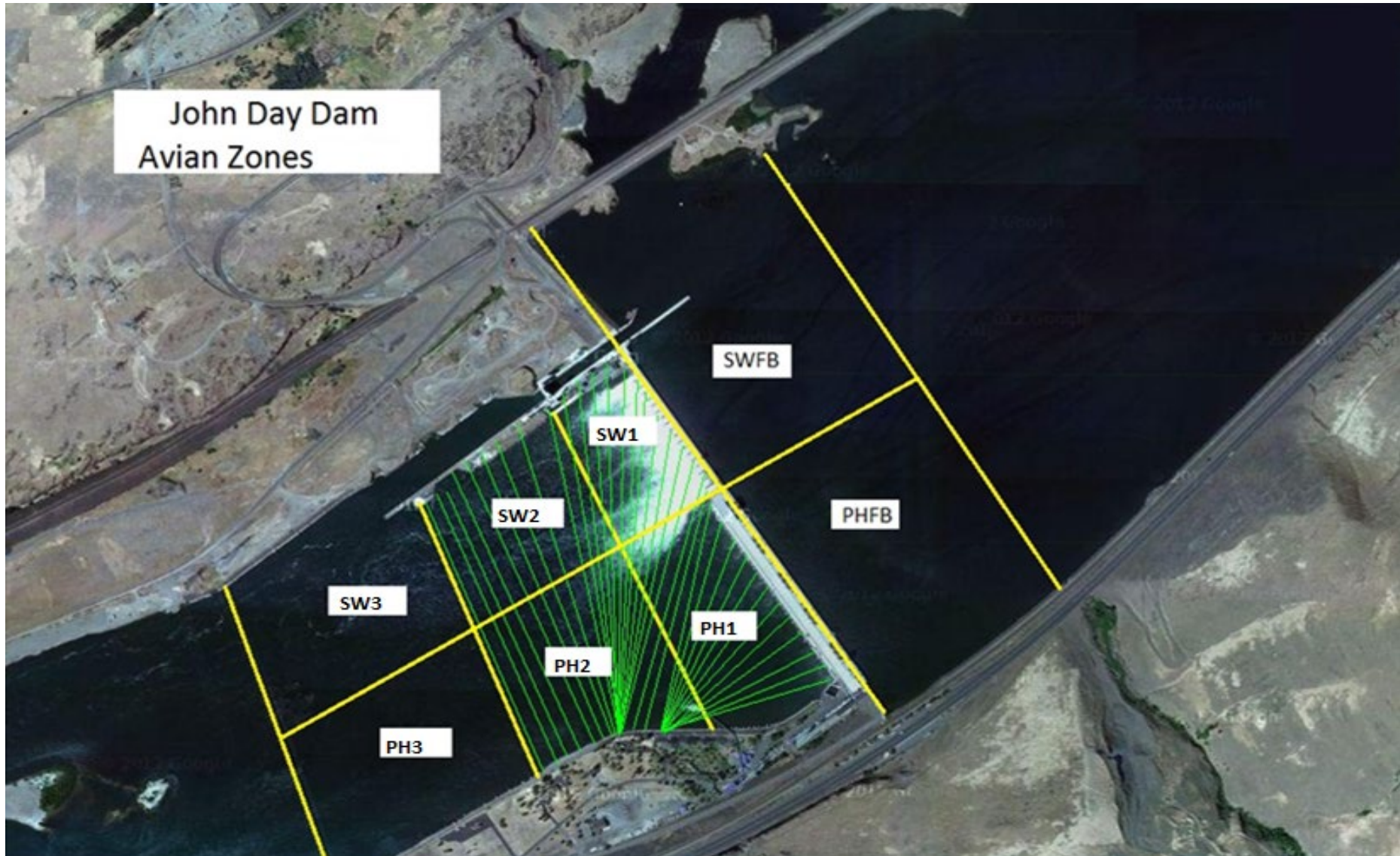
Average Weekly Velocity (ft/sec)	2.67
----------------------------------	------

JOHN DAY WEEKLY AVERAGES

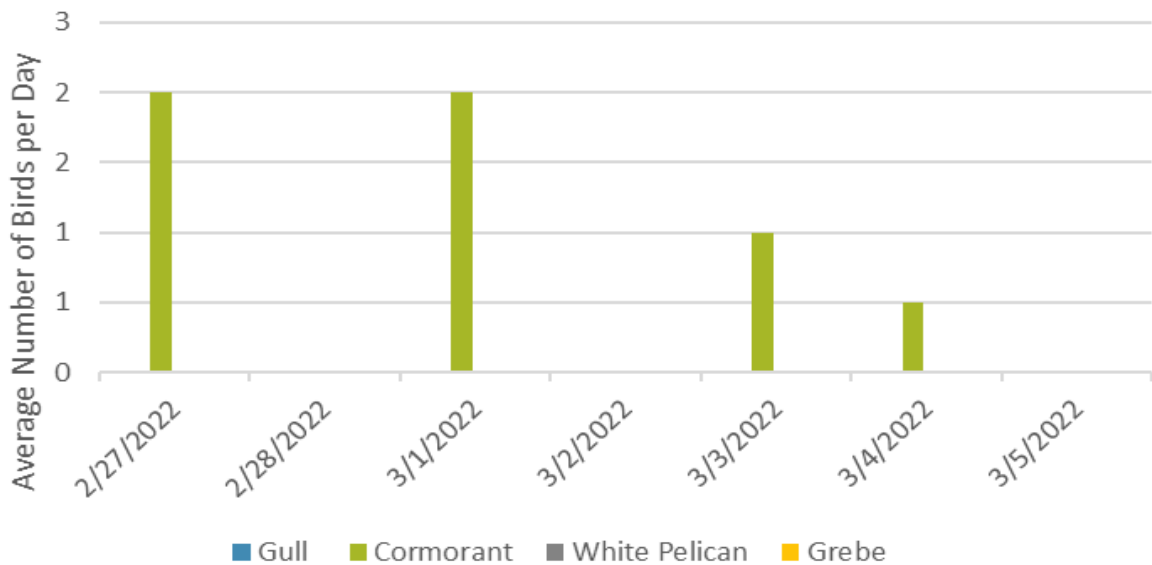
	NE1 (Ft)	NE2 (Ft)	S.Ent (Ft)	SE1 (Ft)	N.Ent (Ft)	JBS Diff (Ft)	Bay19 (Ft)	Spill Vol. (kcfs)	Spill %	# Spillbays
Sunday					1.6			0.0	0.0	0
Monday	10.4	9.7	1.1	9.8	1.5		1.3	0.0	0.0	0
Tuesday	9.9	9.2	1.1	9.4	1.4		1.5	0.0	0.0	0
Tuesday	9.1	9.4	1.3	9.1	1.6		1.7	0.0	0.0	0
Wednesday	9.7	9.9	1.2	9.6	1.0		1.6	0.0	0.0	0
Wednesday	9.9	10.1	1.1	9.8	1.0		1.6	0.0	0.0	0
Thursday	10.0	10.2	1.2	8.8	1.0		1.6	0.0	0.0	0
Thursday								0.0	0.0	0
Friday	9.8	10.0	1.4	8.0	1.0		1.9	0.0	0.0	0
Friday	10.5	10.7	1.2	8.8	1.0		1.5	0.0	0.0	0
Saturday	9.6	9.8	1.4	8.2	1.1		1.7	0.0	0.0	0
Saturday	9.8	10.1	1.4	8.5	1.1		1.7	0.0	0.0	0
AVG:	9.9	9.9	1.2	9.0	1.2	N/A	1.6	0.0	0.0	0.0

	Temp (F)	Secchi (Ft)	Fallbacks	Average # of Pelicans on Island Per Day
Sunday	38.1	5.5	N/A	0
Monday	37.8	5.5	N/A	0
Tuesday	37.9	6.0	N/A	0
Wednesday	38.1	6.0	N/A	1
Thursday	38.1	5.0	N/A	0
Friday	38.0	5.0	N/A	0
Saturday	38.1	5.5	N/A	0
AVG	38.0	5.5	N/A	0

John Day Dam
Avian Zones



Foraging Piscivorous Birds



Non-Foraging Piscivorous Birds

