

FISHWAY STATUS REPORT - JOHN DAY DAM

Date: 2/26/2022

Inspection Period: 2/20/2022 thru 2/26/2022



**US Army Corps
of Engineers**
Portland District

JD/WC Project-Fisheries
P.O. Box 823
Rufus, Oregon 97050
Phone: 541-506-7860

All JD Fishways are inspected twice per day during fish passage season, Mar. 1 - Nov. 30.
Additional and frequent monitoring, of the PLC displays in SMF Fisheries Office, as necessary.

John Day Dam	Inspection OOC	Criteria Limit	Total Number of Inspections: 7				Temperature: 38.7 F	Secchi: 6.0 Ft.
NORTH FISHWAY								
Exit differential	0	≤ 0.5'						
Exit Control weirs	0	High setting	NFL RTS 1/21					
Count station differential	0	≤ 0.3'						
Entrance differential	0	1.0' - 2.0'	AVG (Ft.)	1.5				
SOUTH FISHWAY								
Exit differential	0	≤ 0.5'						
Exit Control weirs	0	Mid setting	SFL SOOS 1/21 for winter maintainence	Estimated RTS 2/28				
Count station differential	0	≤ 0.3'						
Weir crest depth (US gauge)	0	1.0' ± 0.1'						
South entrance differential	0	1.0' - 2.0'	AVG (Ft.)	N/A				
Entrance weir SE1	0	depth (≥ 8')	AVG (Ft.)	N/A				
Collection channel velocity	0	1.5 - 4 fps	AVG (Ft.)	N/A				
N. Entrance PH(Bay 19)differential	0	1.0' - 2.0'	AVG (Ft.)	N/A				
Entrance weir NE1	0	depth (≥ 8')	AVG (Ft.)	N/A				
Entrance weir NE2	0	depth (≥ 8')	AVG (Ft.)	N/A				
JUVENILE PASSAGE								
Forebay/bypass conduit differential	0	4.0' - 5.0'	AVG (Ft.)	N/A				
Submersible traveling screens	0	visual inspect	STSs removed for winter maintenance					
Turbine trashrack drawdown	0	<1.5', wkly						
Vert barrier screen drawdown	0	<1.5', wkly						
Spill volume	0	per FPP	Avg (kcfs)	0.0	Avg %	0.0		
Spill pattern	0	per FPP						
Turbine Unit Priority	0	per FPP						
Turbine 1% Efficiency	0	per FPP						

Fisheries Related Operations

Smolt Monitoring Operations:

Adult Ladder Operations:

North fish ladder is operating within criteria. South fish ladder was dewatered on 2/3. SFL RTS scheduled for 2/28.

Project Operations:

Current outages: Navlock, South Fish Ladder, SMF, JBS, MU3, MU7, MU12.

Line 1 is SOOS as of 2/26 @ 1000 and ETR is 2/28 @1600

Maintenance:

Winter maintenance continues on South Fish Ladder and Navlock.

Calibration:

All gauges within the 0.3' criteria.

Bird Data:

Cormorant numbers are steady around 30, mainly roosting on rocks in SW2. Gull numbers minimal. A pelican seen occasionally resting on Preacher's Island or PH3. Grebes have dispersed. (see 'Bird Count' tab for details). Bird counts are not currently conducted Friday-Sunday.

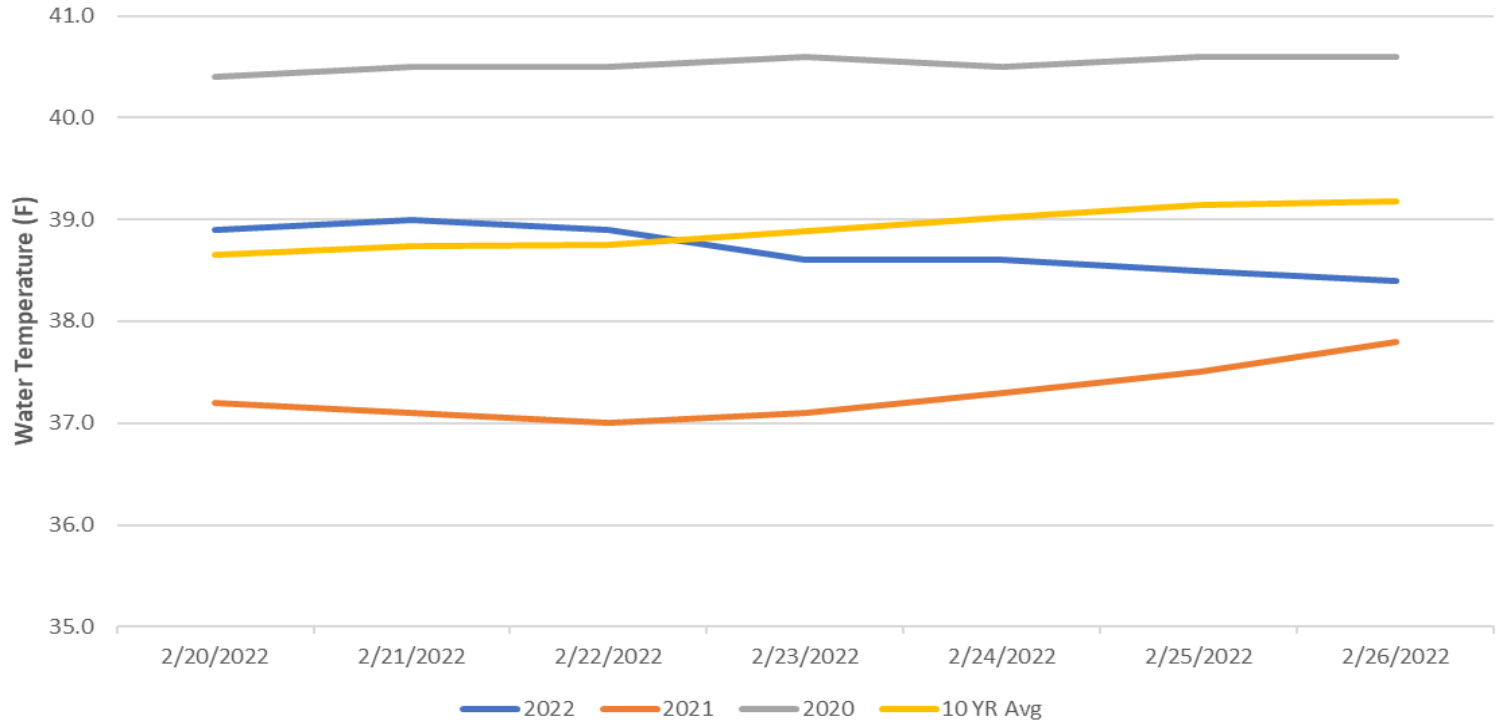
8 of 125 avian lines down, will need to be replaced.

Pelicans on Preacher's Island: averaged 0 per day

Research:

None

John Day Dam Water Temperature (F)

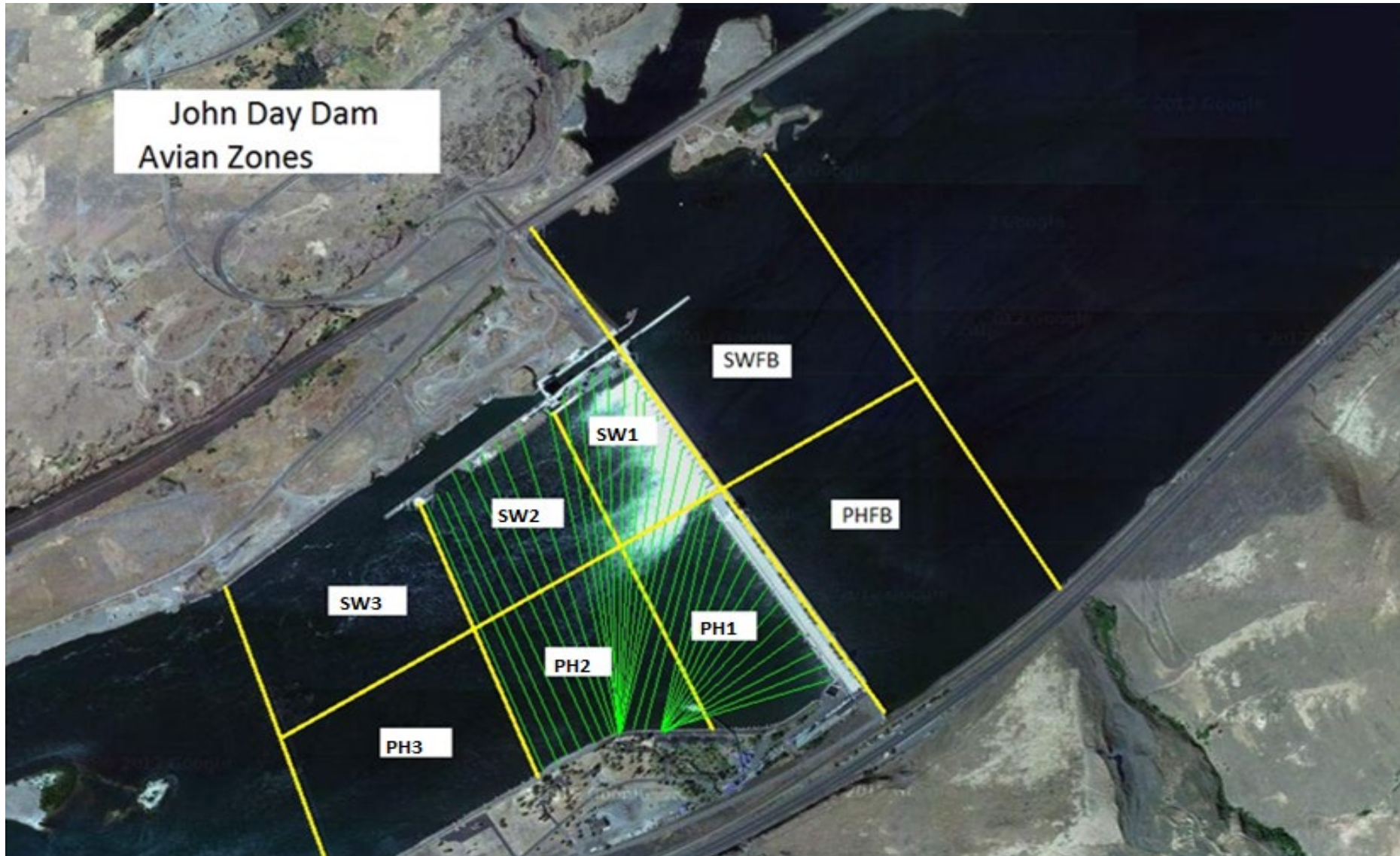


JOHN DAY WEEKLY AVERAGES

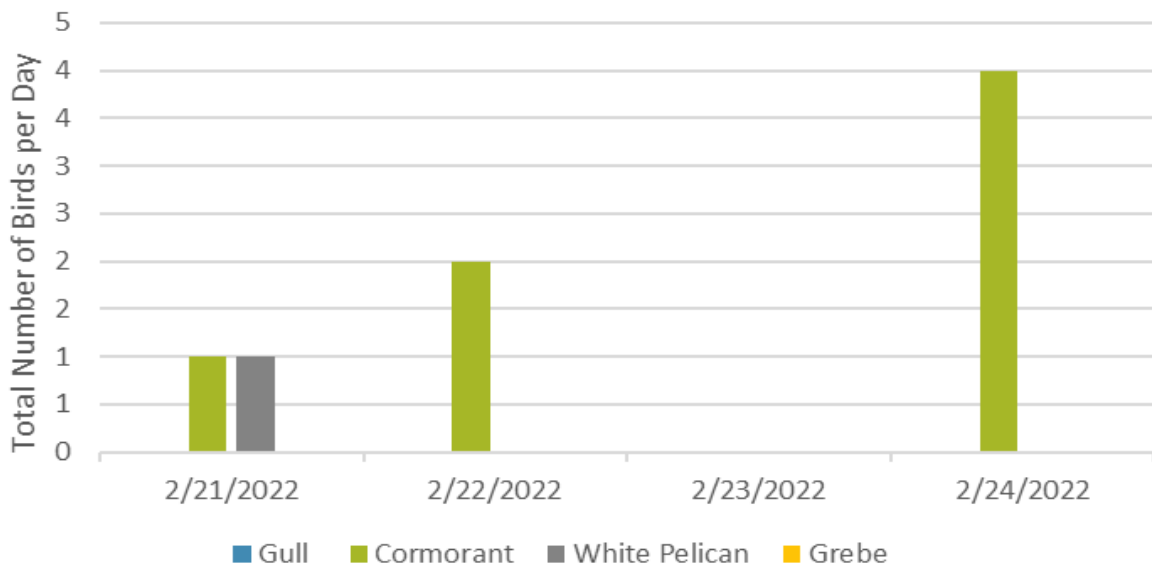
	NE1 (Ft)	NE2 (Ft)	S.Ent (Ft)	SE1 (Ft)	N.Ent (Ft)	JBS Diff (Ft)	Bay19 (Ft)	Spill Vol. (kcfs)	Spill %	# Spillbays
Sunday					1.6			0.0	0.0	0
Monday					1.6			0.0	0.0	0
Tuesday					1.6			0.0	0.0	0
Wednesday					1.5			0.0	0.0	0
Thursday					1.5			0.0	0.0	0
Friday					1.5			0.0	0.0	0
Saturday					1.4			0.0	0.0	0
AVG:	N/A	N/A	N/A	N/A	1.5	N/A	N/A	0.0	0.0	0.0

	Temp (F)	Secchi (Ft)	Fallbacks	Average # of Pelicans on Island Per Day
Sunday	38.9		N/A	
Monday	39.0	6.0	N/A	0
Tuesday	38.9	6.0	N/A	0
Wednesday	38.6	6.0	N/A	0
Thursday	38.6	6.0	N/A	0
Friday	38.5		N/A	
Saturday	38.4		N/A	
AVG	38.7	6.0	N/A	0

John Day Dam
Avian Zones



Foraging Piscivorous Birds



Non-Foraging Piscivorous Birds

