

## FISHWAY STATUS REPORT - JOHN DAY DAM

Date: 2/12/2022

Inspection Period: 2/6/2022 thru 2/12/2022



**US Army Corps  
of Engineers**  
Portland District

JD/WC Project-Fisheries  
P.O. Box 823  
Rufus, Oregon 97050  
Phone: 541-506-7860

All JD Fishways are inspected twice per day during fish passage season, Mar. 1 - Nov. 30.  
Additional and frequent monitoring, of the PLC displays in SMF Fisheries Office, as necessary.

<b>John Day Dam</b>	Inspection OOC	Criteria Limit	Total Number of Inspections: 7		Temperature: 37.4 F	Secchi: 6.0 Ft.
---------------------	-------------------	-------------------	--------------------------------	--	---------------------	-----------------

### NORTH FISHWAY

Exit differential	0	≤ 0.5'				
Exit Control weirs	0	High setting	NFL RTS 1/21			
Count station differential	0	≤ 0.3'				
Entrance differential	0	1.0' - 2.0'	AVG (Ft.)	1.6		

### SOUTH FISHWAY

Exit differential	0	≤ 0.5'				
Exit Control weirs	0	Mid setting	SFL SOOS 1/21 for winter maintainence			
Count station differential	0	≤ 0.3'				
Weir crest depth (US gauge)	0	1.0' ± 0.1'				
South entrance differential	0	1.0' - 2.0'	AVG (Ft.)	N/A		
Entrance weir SE1	0	depth (≥ 8')	AVG (Ft.)	N/A		
Collection channel velocity	0	1.5 - 4 fps	AVG (Ft.)	N/A		
N. Entrance PH(Bay 19)differential	0	1.0' - 2.0'	AVG (Ft.)	N/A		
Entrance weir NE1	0	depth (≥ 8')	AVG (Ft.)	N/A		
Entrance weir NE2	0	depth (≥ 8')	AVG (Ft.)	N/A		

### JUVENILE PASSAGE

Forebay/bypass conduit differential	0	4.0' - 5.0'	AVG (Ft.)	N/A		
Submersible traveling screens	0	visual inspect	STSs removed for winter maintenance			
Turbine trashrack drawdown	0	<1.5', wkly				
Vert barrier screen drawdown	0	<1.5', wkly				
Spill volume	0	per FPP	AVG (kcfs)	0.0	Avg %	0.0
Spill pattern	0	per FPP				
Turbine Unit Priority	0	per FPP				
Turbine 1% Efficiency	0	per FPP				

## Fisheries Related Operations

### Smolt Monitoring Operations:

### Adult Ladder Operations:

North fish ladder is operating within criteria. South fish ladder was dewatered on 2/3.

### Project Operations:

Current outages: Navlock, South Fish Ladder, SMF, JBS, MU3, MU7, MU12.

### Maintenance:

Winter maintenance continues on South Fish Ladder and Navlock.

### Calibration:

All gauges within the 0.3' criteria.

### Bird Data:

Cormorant numbers are steady around 30, mainly roosting on rocks in SW2 and SW3 or towers in PHFB. Gull numbers minimal, few foraging in the tailrace in PH1 and PH3. A pelican seen occasionally resting on Preacher's Island or PH3. Grebes have dispersed. (see 'Bird Count' tab for details). Bird counts are not currently conducted Friday-Sunday.

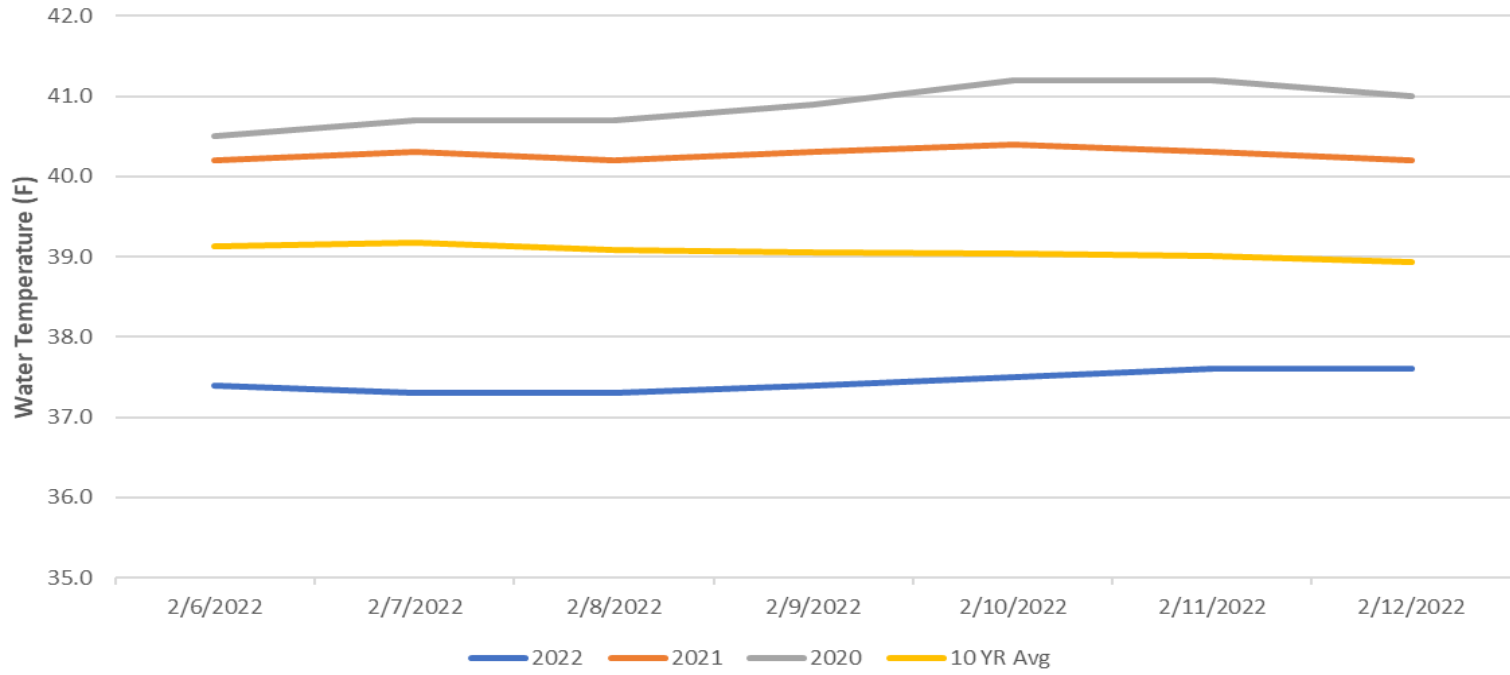
8 of 125 avian lines down, will need to be replaced

Pelicans on Preacher's Island: averaged 0 per day

### Research:

None

### John Day Dam Water Temperature (F)

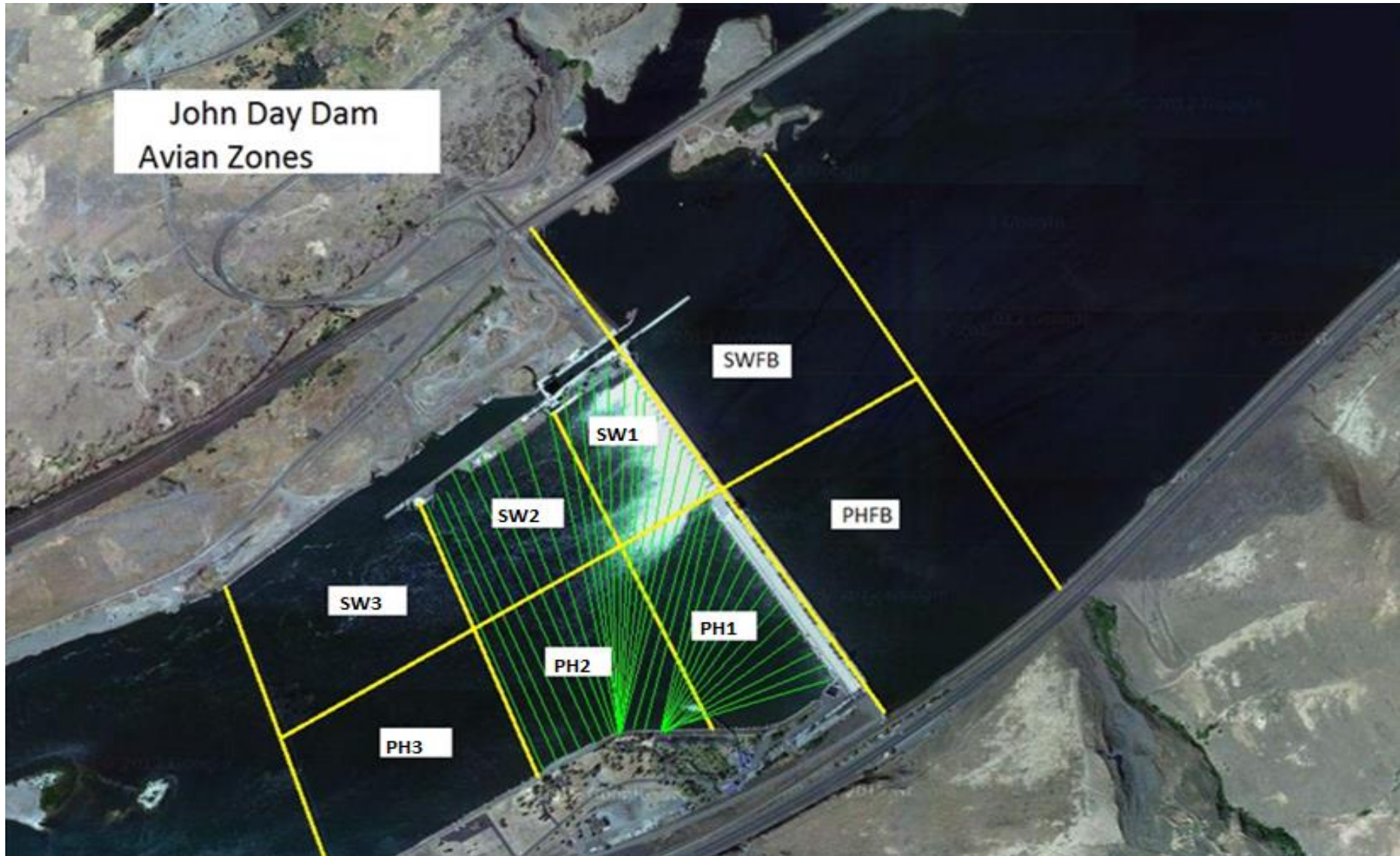


## JOHN DAY WEEKLY AVERAGES

	NE1 (Ft)	NE2 (Ft)	S.Ent (Ft)	SE1 (Ft)	N.Ent (Ft)	JBS Diff (Ft)	Bay19 (Ft)	Spill Vol. (kcfs)	Spill %	# Spillbays
Sunday					1.7			0.0	0.0	0
Monday					1.5			0.0	0.0	0
Tuesday					1.6			0.0	0.0	0
Wednesday					1.6			0.0	0.0	0
Thursday					1.7			0.0	0.0	0
Friday					1.5			0.0	0.0	0
Saturday					1.4			0.0	0.0	0
<b>AVG:</b>	N/A	N/A	N/A	N/A	1.6	N/A	N/A	0.0	0.0	0.0

	Temp (F)	Secchi (Ft)	Fallbacks	Average # of Pelicans on Island Per Day
Sunday	37.4		N/A	
Monday	37.3	6.0	N/A	0
Tuesday	37.3	6.0	N/A	0
Wednesday	37.4	6.0	N/A	0
Thursday	37.5	6.0	N/A	0
Friday	37.6		N/A	
Saturday	37.6		N/A	
<b>AVG</b>	<b>37.4</b>	<b>6.0</b>	<b>N/A</b>	<b>0</b>

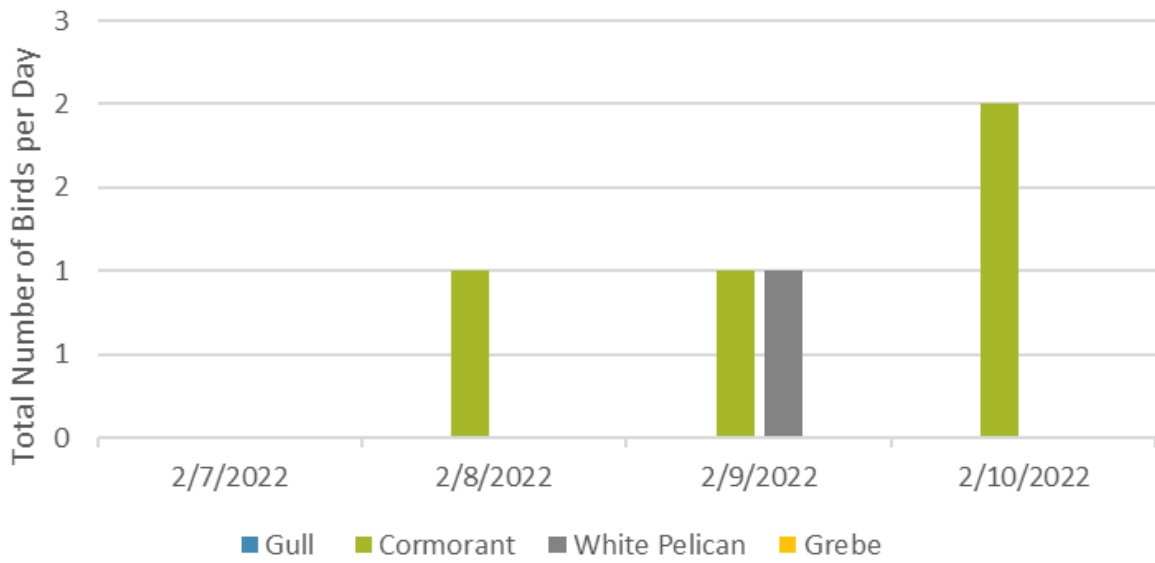
John Day Dam  
Avian Zones



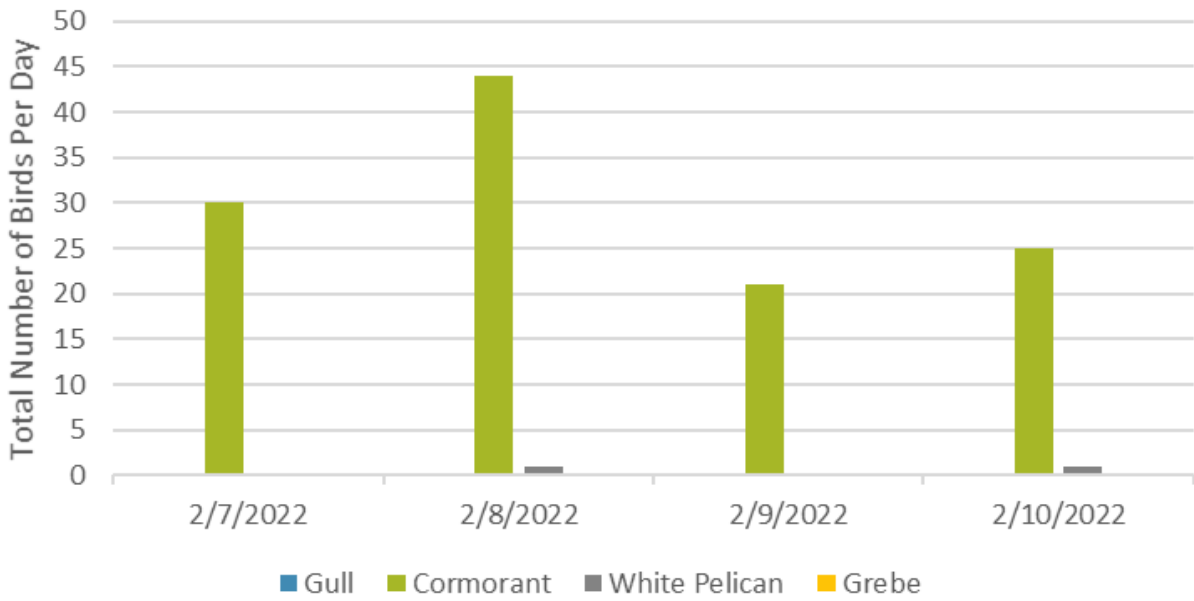




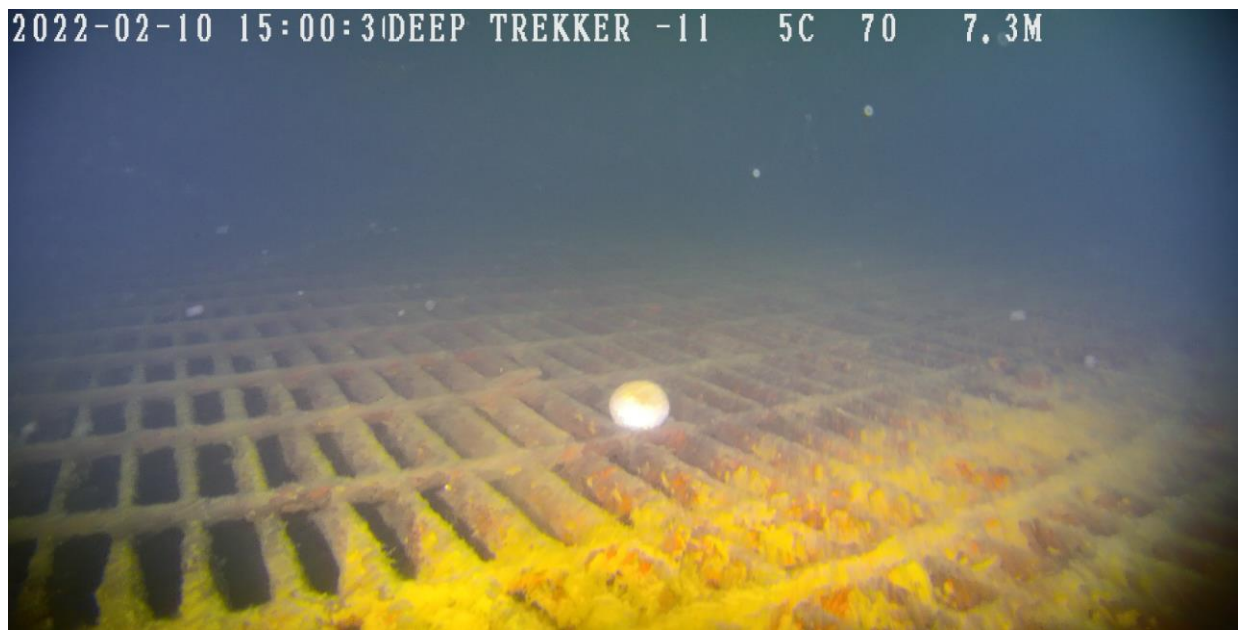
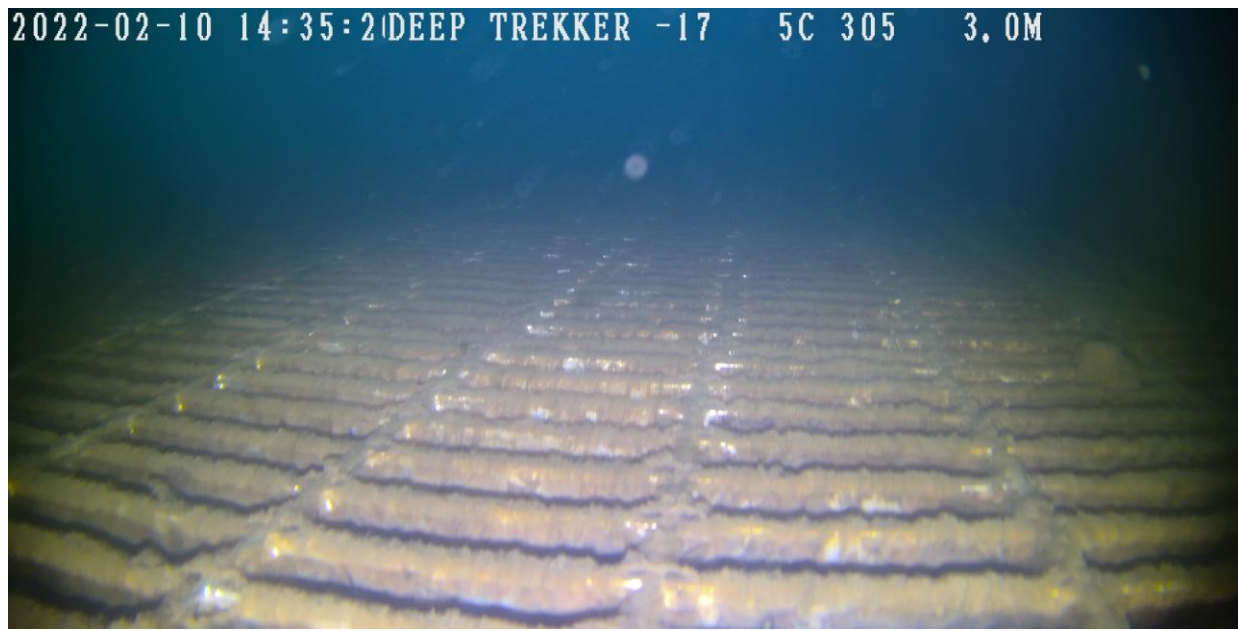
### Foraging Piscivorous Birds



### Non-Foraging Piscivorous Birds







ROV images from AWS grating inspection on 2/10/22