

## FISHWAY STATUS REPORT - JOHN DAY DAM

Date: 1/22/2022

Inspection Period: 1/16/2022 thru 1/22/2022



**US Army Corps  
of Engineers**  
Portland District

JD/WC Project-Fisheries  
P.O. Box 823  
Rufus, Oregon 97050  
Phone: 541-506-7860

All JD Fishways are inspected twice per day during fish passage season, Mar. 1 - Nov. 30.  
Additional and frequent monitoring, of the PLC displays in SMF Fisheries Office, as necessary.

John Day Dam	Inspection OOC	Criteria Limit	Total Number of Inspections: 6				Temperature:	37.7 F
							Secchi:	5.3 Ft.
<b>NORTH FISHWAY</b>								
Exit differential	0	≤ 0.5'						
Exit Control weirs	0	High setting	NFL RTS 1/21					
Count station differential	0	≤ 0.3'						
Entrance differential	0	1.0' - 2.0'	AVG (Ft.)	1.6				
<b>SOUTH FISHWAY</b>								
Exit differential	0	≤ 0.5'						
Exit Control weirs	0	Mid setting	SFL SOOS 1/21 for winter maintainence					
Count station differential	0	≤ 0.3'						
Weir crest depth (US gauge)	0	1.0' ± 0.1'						
South entrance differential	0	1.0' - 2.0'	AVG (Ft.)	1.3				
Entrance weir SE1	1	depth (≥ 8')	AVG (Ft.)	8.7				
Collection channel velocity	0	1.5 - 4 fps	AVG (Ft.)	2.80				
N. Entrance PH(Bay 19)differential	0	1.0' - 2.0'	AVG (Ft.)	1.5				
Entrance weir NE1	0	depth (≥ 8')	AVG (Ft.)	10.0				
Entrance weir NE2	0	depth (≥ 8')	AVG (Ft.)	9.9				
<b>JUVENILE PASSAGE</b>								
Forebay/bypass conduit differential	0	4.0' - 5.0'	AVG (Ft.)	4.5				
Submersible traveling screens	0	visual inspect	STSS removed for winter maintenance					
Turbine trashrack drawdown	0	<1.5', wkly						
Vert barrier screen drawdown	0	<1.5', wkly						
Spill volume	0	per FPP	Avg (kcfs)	0.0	Avg %	0.0		
Spill pattern	0	per FPP						
Turbine Unit Priority	0	per FPP						
Turbine 1% Efficiency	0	per FPP						

## Fisheries Related Operations

### Smolt Monitoring Operations:

### Adult Ladder Operations:

North fish ladder is operating within criteria. South fish ladder was set to orifice flow on 1/21 to prepare for dewatering.

### Project Operations:

Current outages: South Fish Ladder, SMF, MU3, MU5-8, MU7, MU12.

### Maintenance:

Winter maintenance continues on South Fish Ladder

### Calibration:

All gauges within the 0.3' criteria.

### Bird Data:

Cormorant numbers are steady around 30, mainly roosting on rocks in SW2 and SW3 or towers in PHFB. Gull numbers minimal, few foraging in the tailrace in PH1 and PH3. A pelican seen occasionally resting on Preacher's Island or PH3. Grebes have dispersed. (see 'Bird Count' tab for details). Bird counts are not currently conducted Friday-Sunday.

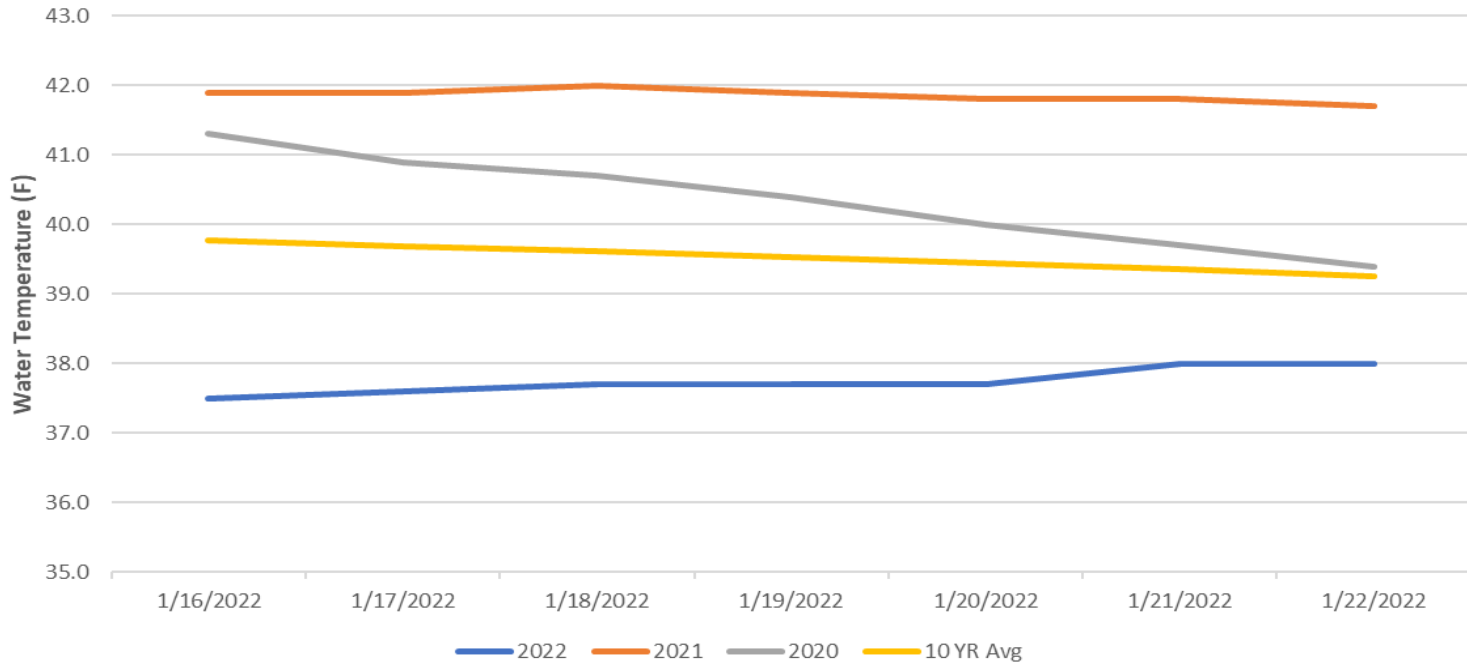
8 of 125 avian lines down, will need to be replaced

Pelicans on Preacher's Island: averaged 0 per day

### Research:

None

### John Day Dam Water Temperature (F)



## JDA Collection Channel Velocity

FPP Criteria: 1.5–4.0 feet per second (2 fps optimum)

Date	Measurement Location	Speed (ft/sec)	SFL Turbine RPMs (1,2,3)	Bay 19 TW (ft)
1/17/2022	Unit 4	2.74	0,68,68	160.7
1/17/2022	Unit 12	2.86	0,68,68	160.7

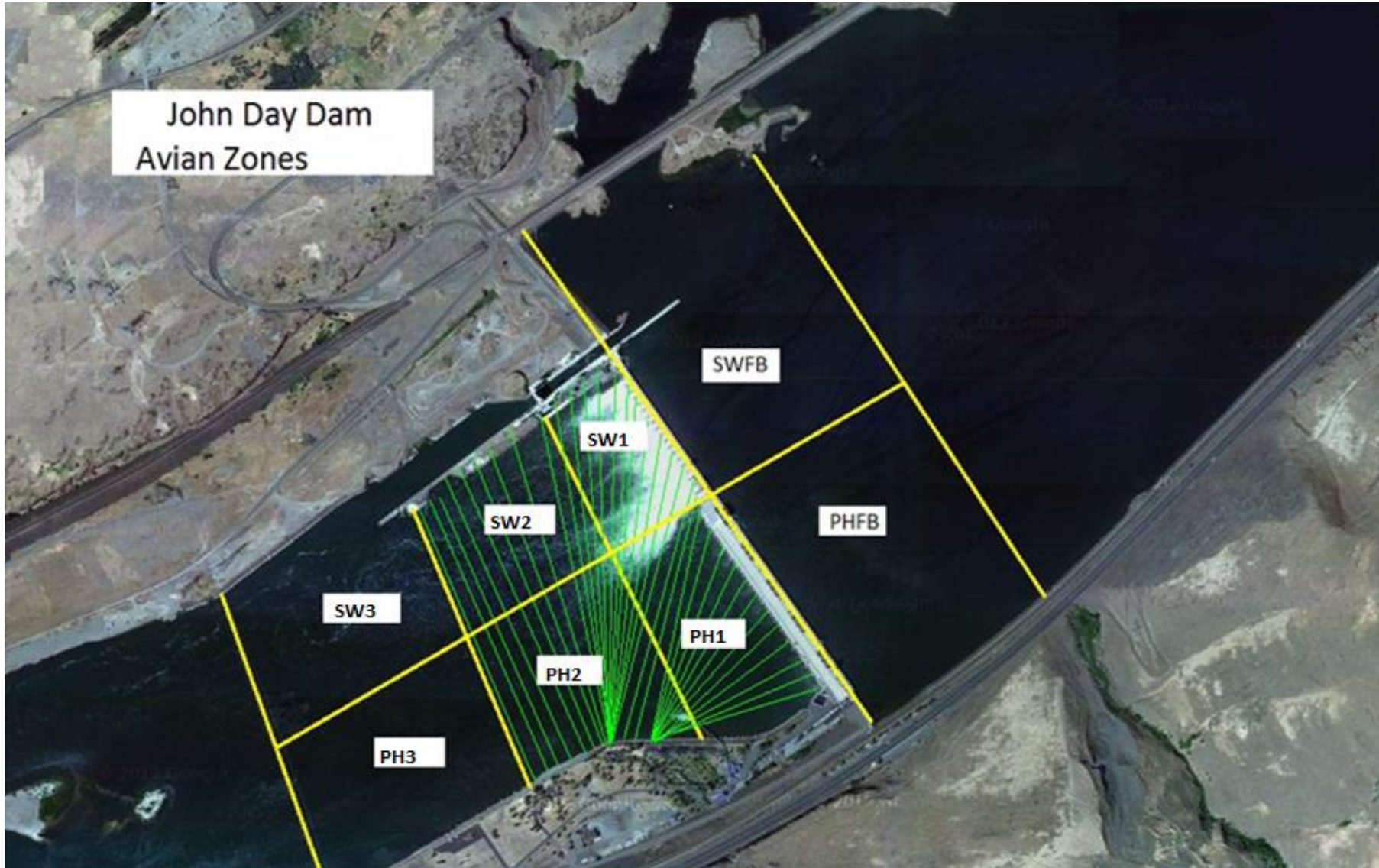
Average Weekly Velocity (ft/sec)	2.80
----------------------------------	------

## JOHN DAY WEEKLY AVERAGES

	NE1 (Ft)	NE2 (Ft)	S.Ent (Ft)	SE1 (Ft)	N.Ent (Ft)	JBS Diff (Ft)	Bay19 (Ft)	Spill Vol. (kcfs)	Spill %	# Spillbays
<b>Sunday</b>										
<b>Monday</b>	10.0	9.9	1.2	8.8		4.3	1.9	0.0	0.0	0
<b>Tuesday</b>	10.3	10.3	1.2	9.8		4.5	1.4	0.0	0.0	0
<b>Wednesday</b>	10.5	10.4	1.2	8.8		4.6	1.4	0.0	0.0	0
<b>Thursday</b>	9.7	9.7	1.4	7.7		4.5	1.3	0.0	0.0	0
<b>Friday</b>	9.9	9.9		8.7	1.6	4.5		0.0	0.0	0
<b>Saturday</b>	9.5	9.4		8.2	1.6	4.6		0.0	0.0	0
<b>AVG:</b>	<b>10.0</b>	<b>9.9</b>	<b>1.3</b>	<b>8.7</b>	<b>1.6</b>	<b>4.5</b>	<b>1.5</b>	<b>0.0</b>	<b>0.0</b>	<b>0.0</b>

	Temp (F)	Secchi (Ft)	Fallbacks	Average # of Pelicans on Island Per Day
<b>Sunday</b>	37.5		N/A	
<b>Monday</b>	37.6	5.0	N/A	0
<b>Tuesday</b>	37.7	6.0	N/A	0
<b>Wednesday</b>	37.7	5.0	N/A	0
<b>Thursday</b>	37.7	5.0	N/A	0
<b>Friday</b>	38.0		N/A	
<b>Saturday</b>	38.0		N/A	
<b>AVG</b>	<b>37.7</b>	<b>5.3</b>	<b>N/A</b>	<b>0</b>

John Day Dam  
Avian Zones

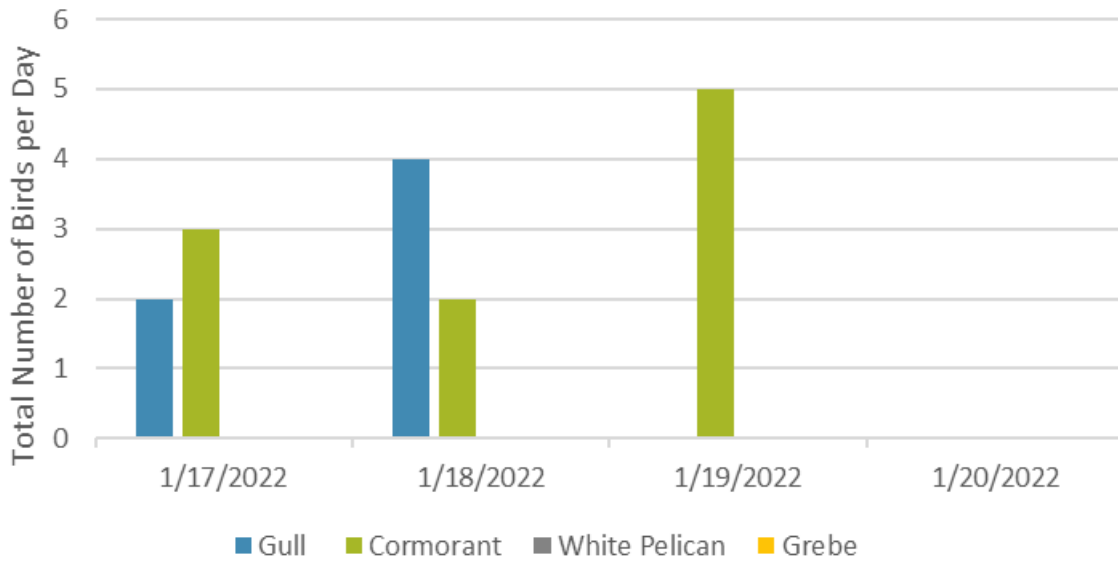








### Foraging Piscivorous Birds



### Non-Foraging Piscivorous Birds

