

## FISHWAY STATUS REPORT - JOHN DAY DAM

Date: 1/1/2022

Inspection Period: 12/26/2021 thru 1/1/2022



**US Army Corps  
of Engineers**  
Portland District

JD/WC Project-Fisheries  
P.O. Box 823  
Rufus, Oregon 97050  
Phone: 541-506-7860

All JD Fishways are inspected twice per day during fish passage season, Mar. 1 - Nov. 30.  
Additional and frequent monitoring, of the PLC displays in SMF Fisheries Office, as necessary.

John Day Dam	Inspection OOC	Criteria Limit	Total Number of Inspections: 6				Temperature:	42.5 F
							Secchi:	4.7 Ft.
<b>NORTH FISHWAY</b>								
Exit differential	0	≤ 0.5'						
Exit Control weirs	0	High setting	NFL Taken OOS for Winter Maintenance on 12-6-21					
Count station differential	0	≤ 0.3'						
Entrance differential	0	1.0' - 2.0'	AVG (Ft.)	N/A				
<b>SOUTH FISHWAY</b>								
Exit differential	0	≤ 0.5'						
Exit Control weirs	0	Mid setting	Mid setting is normal					
Count station differential	0	≤ 0.3'						
Weir crest depth (US gauge)	0	1.0' ± 0.1'						
South entrance differential	0	1.0' - 2.0'	AVG (Ft.)	1.4				
Entrance weir SE1	0	depth (≥ 8')	AVG (Ft.)	8.9				
Collection channel velocity	0	1.5 - 4 fps	AVG (Ft.)	2.71				
N. Entrance PH(Bay 19)differential	0	1.0' - 2.0'	AVG (Ft.)	1.6				
Entrance weir NE1	0	depth (≥ 8')	AVG (Ft.)	9.9				
Entrance weir NE2	0	depth (≥ 8')	AVG (Ft.)	9.8				
<b>JUVENILE PASSAGE</b>								
Forebay/bypass conduit differential	0	4.0' - 5.0'	AVG (Ft.)	4.8				
Submersible traveling screens	0	visual inspect	STSs being removed for winter maintenance					
Turbine trashrack drawdown	0	<1.5', wkly						
Vert barrier screen drawdown	0	<1.5', wkly						
Spill volume	0	per FPP	Avg (kcfs)	0.0	Avg %	0.0		
Spill pattern	0	per FPP						
Turbine Unit Priority	0	per FPP						
Turbine 1% Efficiency	0	per FPP						

## Fisheries Related Operations

### Smolt Monitoring Operations:

### Adult Ladder Operations:

South fish ladder is operating within criteria. North fish ladder was dewatered on 12/6.

### Project Operations:

Current outages: MU3, MU7, MU8, MU12.

### Maintenance:

JD North Fishway's pump 4 has been pulled for maintenance (RTS to be determined).

### Calibration:

All gauges within the 0.3' criteria.

### Bird Data:

Decreasing number of cormorants mainly roosting on rocks in SW2 and SW3 or towers in PHFB. Gull numbers decreasing with modest numbers resting in the water in PHFB or SWFB and foraging in the tailrace mainly PH1 and PH3. A couple pelicans seen occasionally resting on Preacher's Island. Grebes have dispersed. (see 'Bird Count' tab for details).

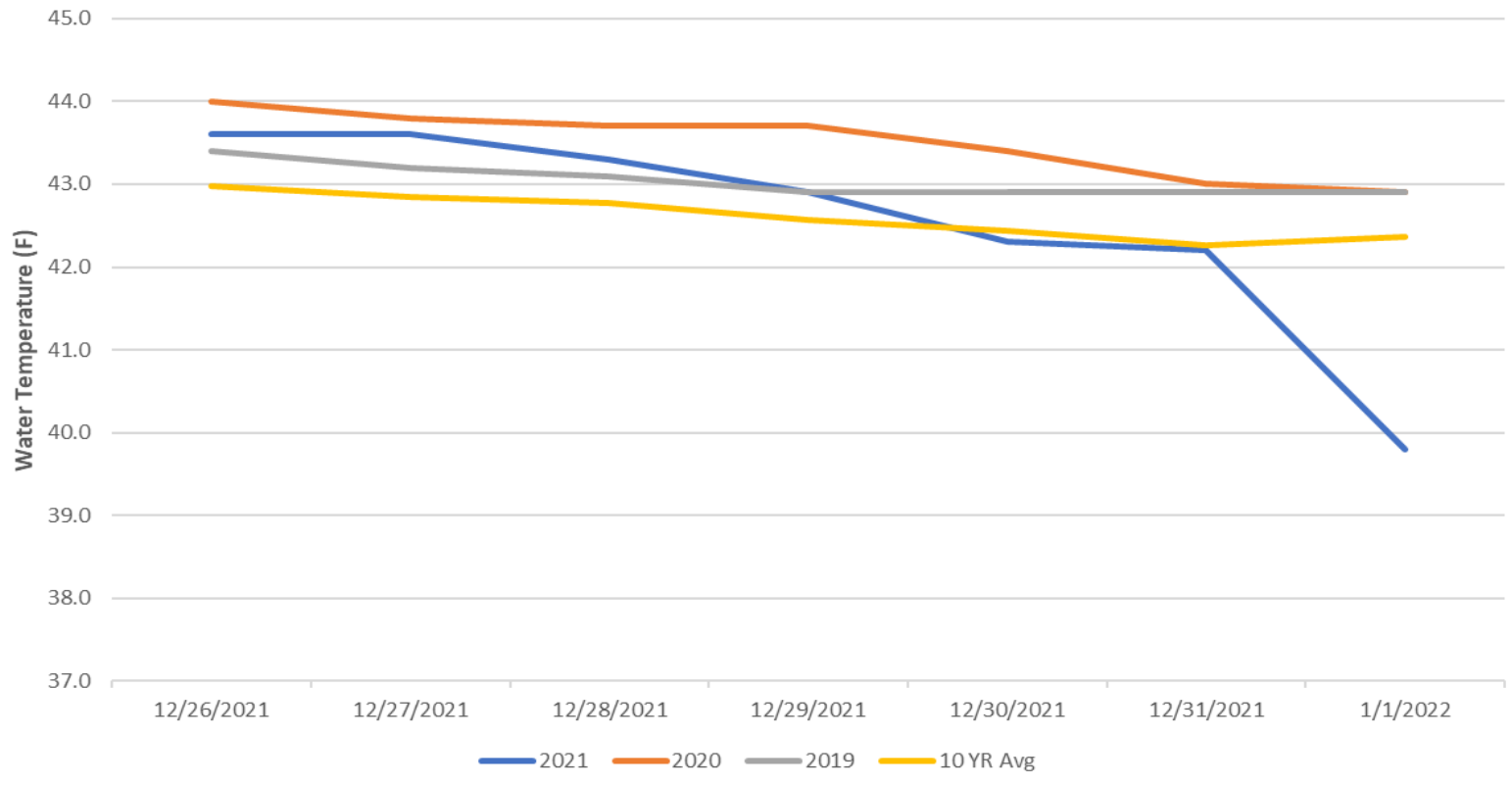
8 of 125 avian lines down, will need to be replaced

Pelicans on Preacher's Island: averaged 0 per day

### Research:

None

### John Day Dam Water Temperatures (F)



## JDA Collection Channel Velocity

FPP Criteria: 1.5–4.0 feet per second (2 fps optimum)

Date	Measurement Location	Speed (ft/sec)	SFL Turbine RPMs (1,2,3)	Bay 19 TW (ft)
12/21/2021	Unit 4	2.70	0,68,68	159.8
12/21/2021	Unit 12	2.76	0,68,68	159.8
12/22/2021	Unit 4	2.68	0,68,68	160.8
12/22/2021	Unit 12	2.70	0,68,68	160.8

Average Weekly Velocity (ft/sec)

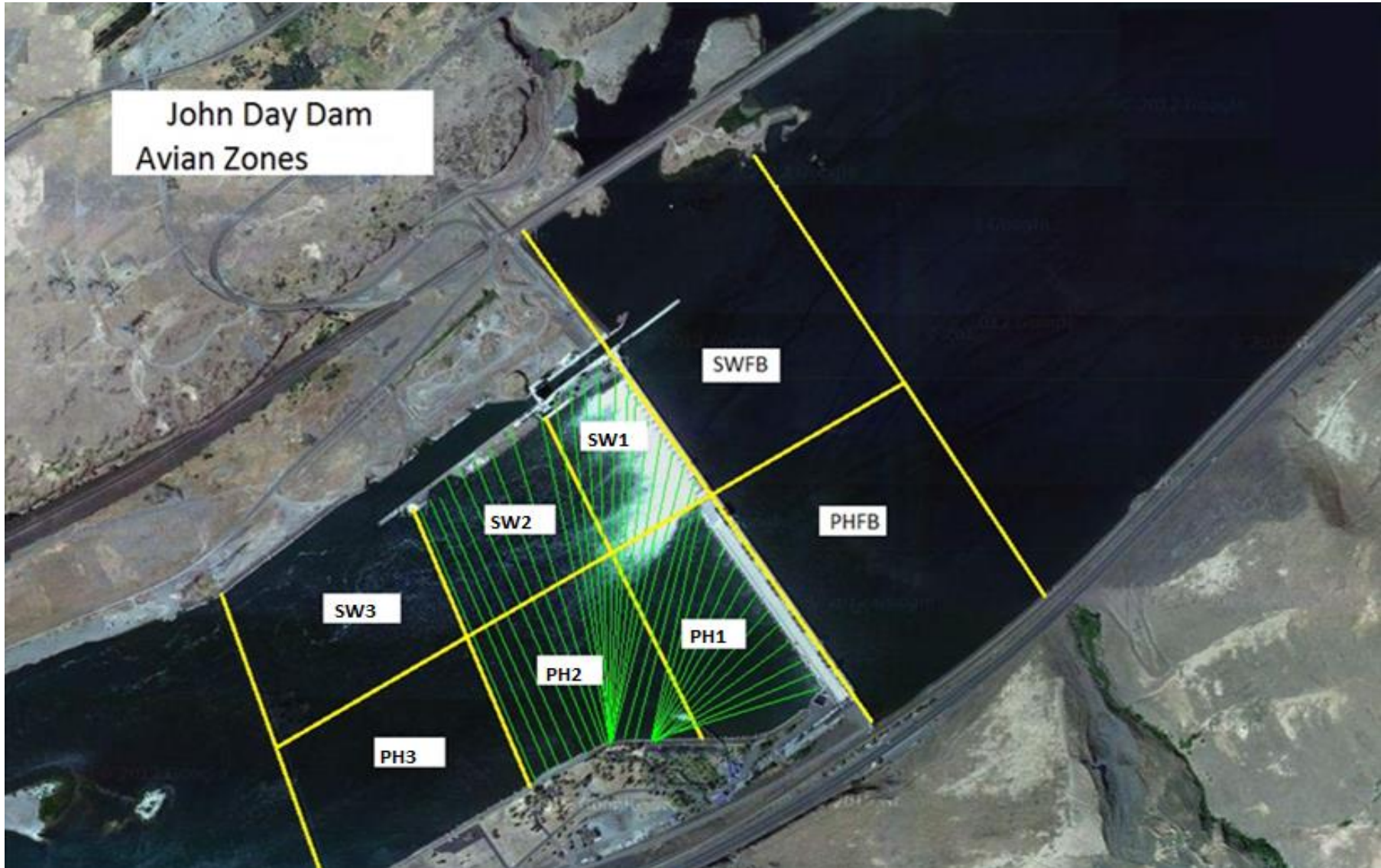
2.71

## JOHN DAY WEEKLY AVERAGES

	NE1 (Ft)	NE2 (Ft)	S.Ent (Ft)	SE1 (Ft)	N.Ent (Ft)	JBS Diff (Ft)	Bay19 (Ft)	Spill Vol. (kcfs)	Spill %	# Spillbays
<b>Sunday</b>	9.4	9.3	1.6	8.9		4.9	1.6	0.0	0.0	0
<b>Monday</b>	10.0	9.9	1.2	8.9		4.8	1.5	0.0	0.0	0
<b>Tuesday</b>	10.2	10.3	1.3	9.2		4.8	1.7	0.0	0.0	0
<b>Wednesday</b>	10.4	10.5	1.2	9.2		4.7	1.3	0.0	0.0	0
<b>Thursday</b>										
<b>Friday</b>	9.6	9.5	1.6	8.6		4.7	1.9	0.0	0.0	0
<b>Saturday</b>	9.6	9.5	1.7	8.6		4.7	1.7	0.0	0.0	0
<b>AVG:</b>	<b>9.9</b>	<b>9.8</b>	<b>1.4</b>	<b>8.9</b>	<b>N/A</b>	<b>4.8</b>	<b>1.6</b>	<b>0.0</b>	<b>0.0</b>	<b>0.0</b>

	Temp (F)	Secchi (Ft)	Fallbacks	Average # of Pelicans on Island Per Day
<b>Sunday</b>	43.6	4.0	N/A	0
<b>Monday</b>	43.3	6.0	N/A	0
<b>Tuesday</b>	42.9	5.5	N/A	0
<b>Wednesday</b>	42.3	5.0	N/A	0
<b>Thursday</b>	42.2	4.5	N/A	0
<b>Friday</b>	41.7	4.0	N/A	0
<b>Saturday</b>	41.2	4.0	N/A	0
<b>AVG</b>	<b>42.5</b>	<b>4.7</b>	<b>N/A</b>	<b>0</b>

John Day Dam  
Avian Zones

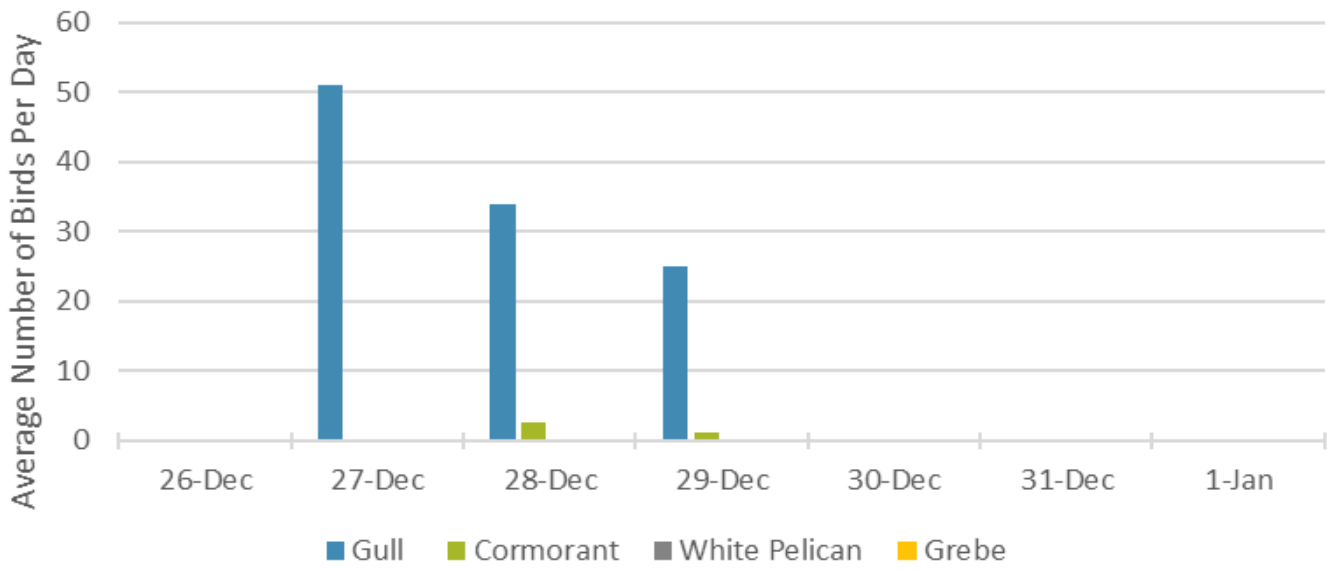








### Foraging Piscivorous Birds



### Non-Foraging Piscivorous Birds

