

FISHWAY STATUS REPORT - JOHN DAY DAM

Date: 1/9/2021

Inspection Period: 1/3/2021 thru 1/9/2021



**US Army Corps
of Engineers**
Portland District

JD/WC Project-Fisheries
P.O. Box 823
Rufus, Oregon 97050
Phone: 541-506-7860

All JD Fishways are inspected twice per day during fish passage season, Mar. 1 - Nov. 30.
Additional and frequent monitoring, of the PLC displays in SMF Fisheries Office, as necessary.

John Day Dam	Inspection OOC	Criteria Limit	Total Number of Inspections: 7				Temperature:	41.9 F
							Secchi:	6.0 Ft.
NORTH FISHWAY								
Exit differential	0	≤ 0.5'						
Exit Control weirs	0	High setting	High setting is normal					
Count station differential	0	≤ 0.3'						
Entrance differential	0	1.0' - 2.0'	AVG (Ft.)	OOS				
SOUTH FISHWAY								
Exit differential	0	≤ 0.5'						
Exit Control weirs	0	Mid setting	Mid setting is normal					
Count station differential	0	≤ 0.3'						
Weir crest depth (US gauge)	0	1.0' ± 0.1'						
South entrance differential	0	1.0' - 2.0'	AVG (Ft.)	1.2				
Entrance weir SE1	0	depth (≥ 8')	AVG (Ft.)	9.3				
Collection channel velocity	0	1.5 - 4 fps	AVG (Ft.)	2.69				
N. Entrance PH(Bay 19)differential	0	1.0' - 2.0'	AVG (Ft.)	1.4				
Entrance weir NE1	0	depth (≥ 8')	AVG (Ft.)	9.7				
Entrance weir NE2	0	depth (≥ 8')	AVG (Ft.)	9.8				
JUVENILE PASSAGE								
Forebay/bypass conduit differential	0	4.0' - 5.0'	AVG (Ft.)	4.6				
Submersible traveling screens	0	visual inspect	Last Visual Inspection		Next Visual Inspection			
Turbine trashrack drawdown	0	<1.5', wkly						
Vert barrier screen drawdown	0	<1.5', wkly						
Spill volume	0	per FPP	Avg (kcfs)	OOS	Avg %	OOS		
Spill pattern	0	per FPP						
Turbine Unit Priority	0	per FPP						
Turbine 1% Efficiency	0	per FPP						

Fisheries Related Operations

Smolt Monitoring Operations:

Smolt Monitoring Facility has been dewatered for the winter.

Adult Ladder Operations:

JD South Adult Fishway is operating within criteria. South Fish ladder is scheduled to be dewatered January 20th. JD North Adult Fishway is dewatered. The North Fish ladder is scheduled to return January 14.

Project Operations:

Current outages: MU6, MU7, MU9, MU12.

Tailwater Average Weekly TDG

Maintenance:

JD North Fishway's pump 4 has been pulled for maintenance. - JD Maintenance continue repairs of AWS fish pump 4. RTS has yet TBD. Calibration - All gauges within the 0.3' criteria.

Bird Data:

Decreasing foraging and non foraging gulls this week. (see 'Bird Count' tab for details).

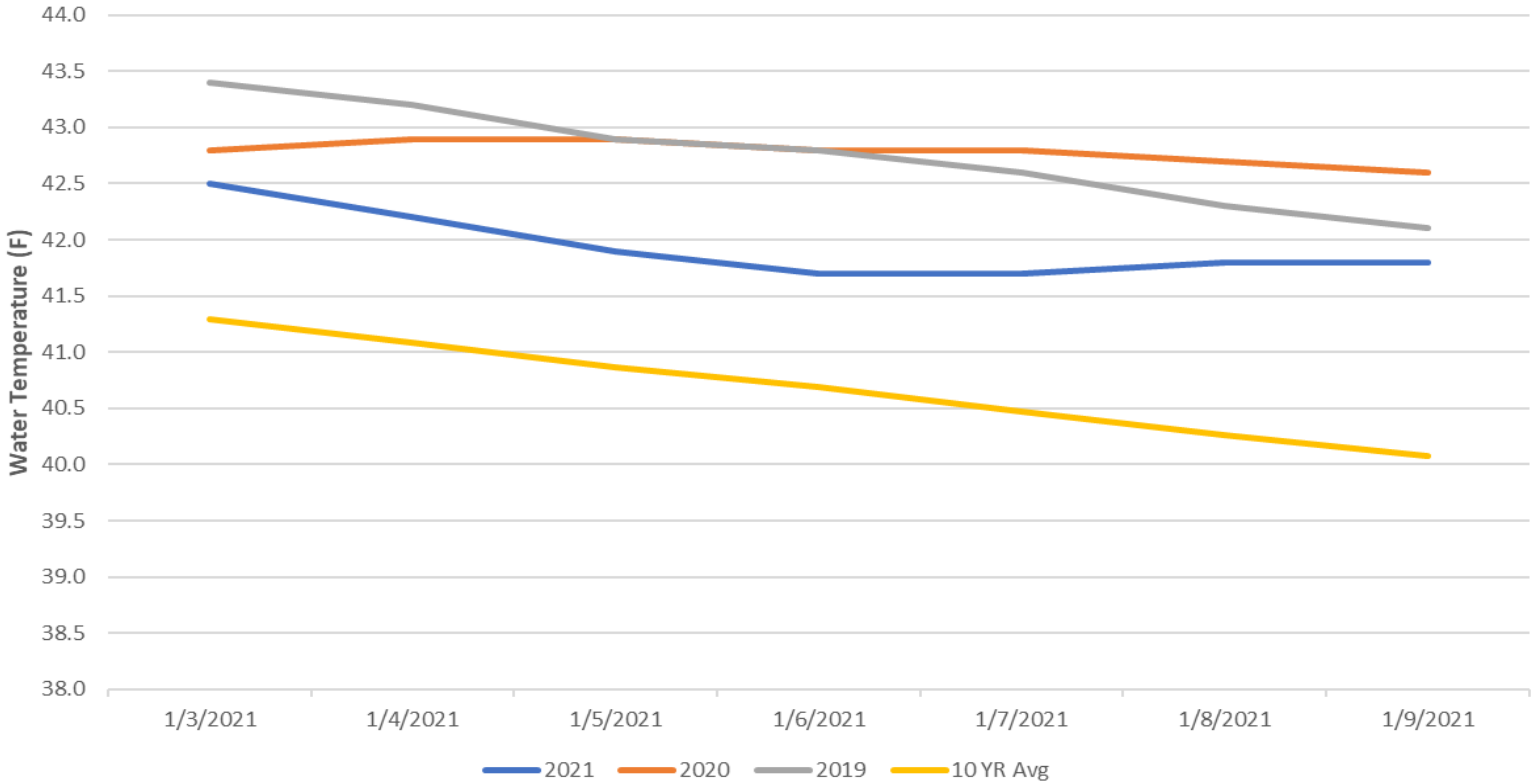
1 of 125 avian lines down, will need to be replaced

Pelicans on Preacher's Island: averaged 0 per day

Research:

Approved by: Brett Call, OPM

John Day Dam Water Temperatures (F)



JDA Collection Channel Velocity

FPP Criteria: 1.5–4.0 feet per second (2 fps optimum)

Date	Measurement Location	Speed (ft/sec)	SFL Turbine RPMs (1,2,3)	Bay 19 TW (ft)
1/8/2021	Unit 4	2.57	0,68,68	160.4
1/8/2021	Unit 12	2.81	0,68,68	160.4

Average Weekly Velocity (ft/sec)

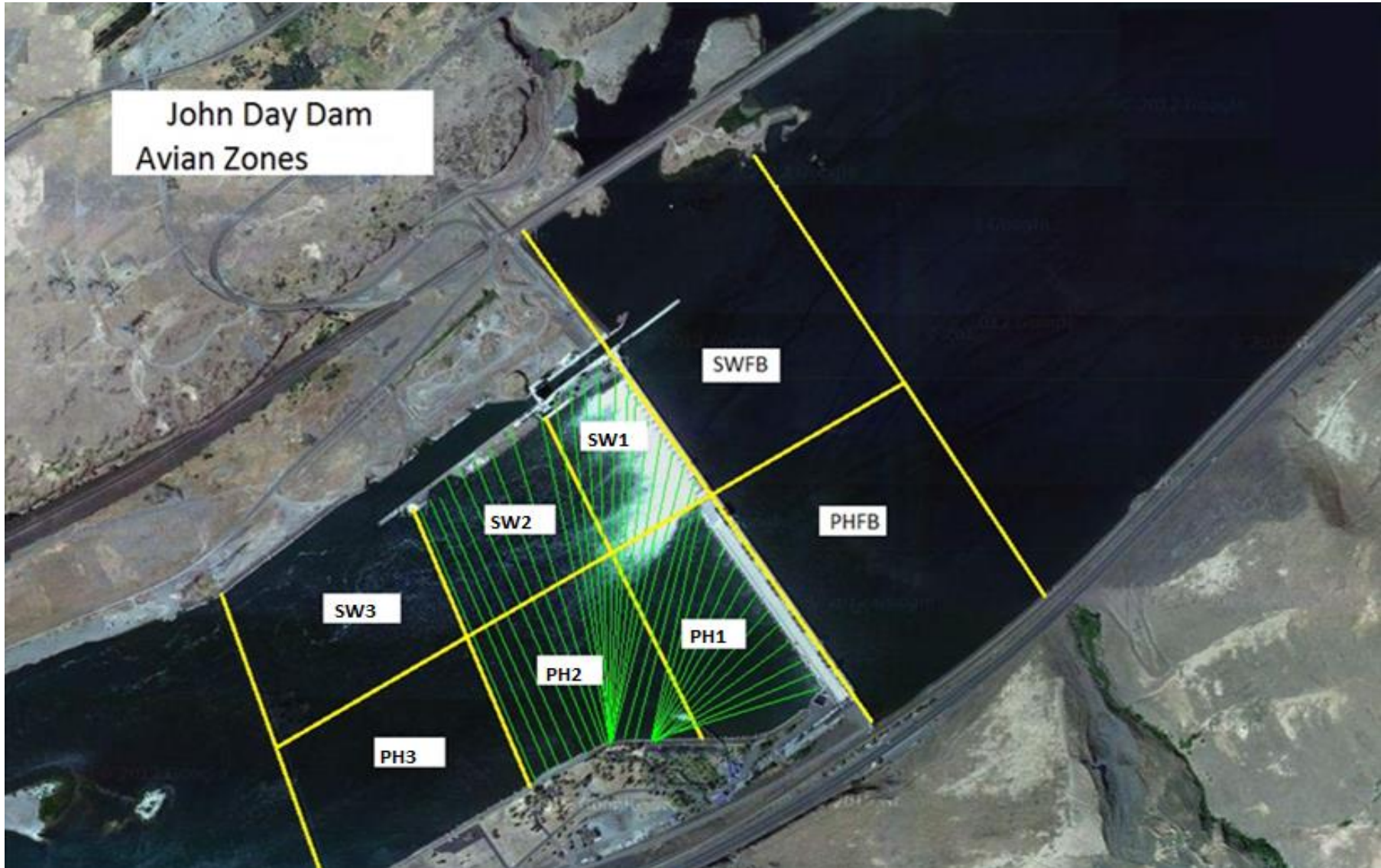
2.69

JOHN DAY WEEKLY AVERAGES

	NE1 (Ft)	NE2 (Ft)	S.Ent (Ft)	SE1 (Ft)	N.Ent (Ft)	JBS Diff (Ft)	Bay19 (Ft)	Spill Vol. (kcfs)	Spill %	# Spillbays
Sunday	8.9	9.1	1.1	8.6	OOS	4.7	1.3	OOS	OOS	OOS
Monday	9.4	9.3	1.2	9.2	OOS	4.6	1.8	OOS	OOS	OOS
Tuesday	9.7	9.9	1.3	10.2	OOS	4.7	1.5	OOS	OOS	OOS
Wednesday	10.4	10.6	1.2	9.0	OOS	4.6	1.2	OOS	OOS	OOS
Thursday	9.7	9.9	1.1	9.4	OOS	4.7	1.2	OOS	OOS	OOS
Friday	9.6	9.8	1.1	9.4	OOS	4.5	1.6	OOS	OOS	OOS
Saturday	10.1	10.3	1.1	9.6	OOS	4.5	1.3	OOS	OOS	OOS
AVG:	9.7	9.8	1.2	9.3	OOS	4.6	1.4	OOS	OOS	OOS

	Temp (F)	Secchi (Ft)	Fallbacks	Pelicans on Island
Sunday	42.5	6.0	N/A	0
Monday	42.2	6.0	N/A	0
Tuesday	41.9	6.0	N/A	1
Wednesday	41.7	6.0	N/A	0
Thursday	41.7	6.0	N/A	0
Friday	41.8	6.0	N/A	0
Saturday	41.8	6.0	N/A	0
AVG	41.9	6.0	N/A	0

John Day Dam
Avian Zones

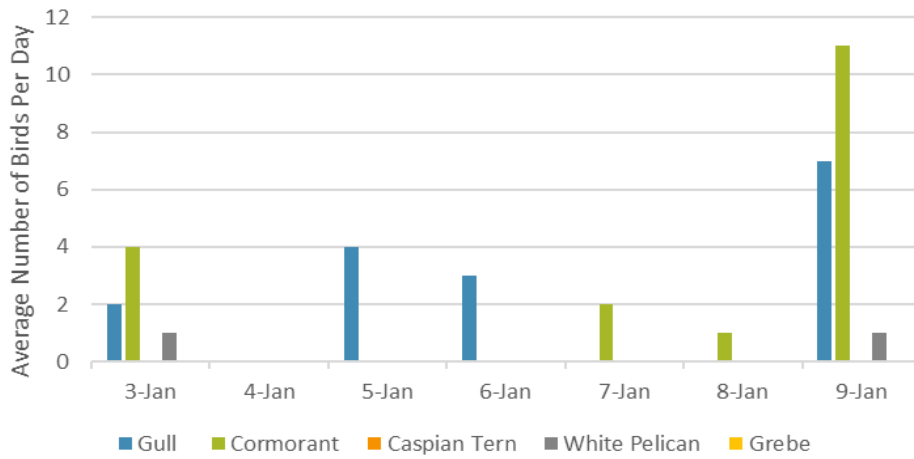


JDA Bird Counts: 1/3/21 to 1/9/21

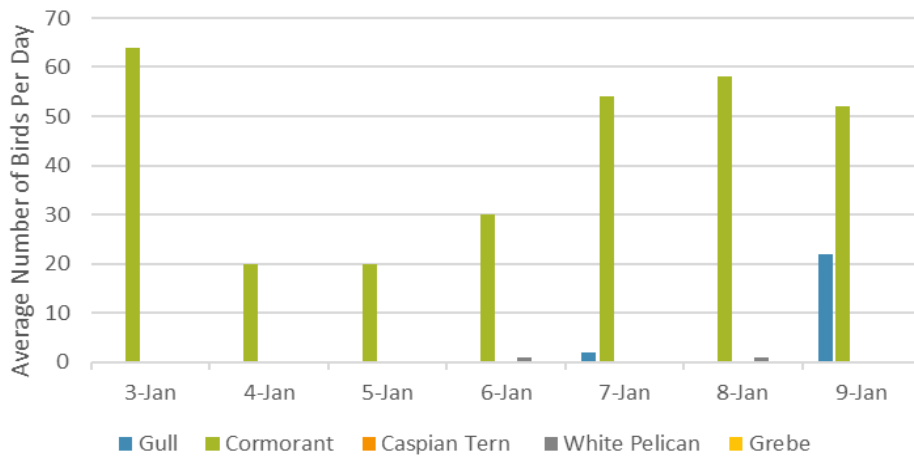
F(1): Forage AM survey F(2): Forage PM Survey NF(1): Non-Forage AM Survey NF(2): Non-Forage PM Survey

Date	Zone	Gulls				Cormorant				Caspian tern				White Pelican				Grebe				Total
		F(1)	F(2)	NF(1)	NF(2)	F(1)	F(2)	NF(1)	NF(2)	F(1)	F(2)	NF(1)	NF(2)	F(1)	F(2)	NF(1)	NF(2)	F(1)	F(2)	NF(1)	NF(2)	
3-Jan	PHFB	0	0	0	0	1	0	0	0	0	0	0	0	0	0	0	0	0	0	0	0	1
3-Jan	SWFB	0	0	0	0	0	0	0	0	0	0	0	0	0	0	0	0	0	0	0	0	0
3-Jan	PH1	0	0	0	0	3	0	0	0	0	0	0	0	0	0	0	0	0	0	0	0	3
3-Jan	PH2	0	0	0	0	0	0	0	0	0	0	0	0	0	0	0	0	0	0	0	0	0
3-Jan	PH3	0	0	0	0	0	0	0	0	0	0	0	0	1	0	0	0	0	0	0	0	1
3-Jan	SW1	0	0	0	0	0	0	0	0	0	0	0	0	0	0	0	0	0	0	0	0	0
3-Jan	SW2	0	0	0	0	0	0	64	0	0	0	0	0	0	0	0	0	0	0	0	0	64
3-Jan	SW3	2	0	0	0	0	0	0	0	0	0	0	0	0	0	0	0	0	0	0	0	2
Avg/Survey		2		0		4		64		0		0		1		0		0		0		71
4-Jan	PHFB	0	0	0	0	0	0	0	0	0	0	0	0	0	0	0	0	0	0	0	0	0
4-Jan	SWFB	0	0	0	0	0	0	0	0	0	0	0	0	0	0	0	0	0	0	0	0	0
4-Jan	PH1	0	0	0	0	0	0	0	0	0	0	0	0	0	0	0	0	0	0	0	0	0
4-Jan	PH2	0	0	0	0	0	0	0	0	0	0	0	0	0	0	0	0	0	0	0	0	0
4-Jan	PH3	0	0	0	0	0	0	0	0	0	0	0	0	0	0	0	0	0	0	0	0	0
4-Jan	SW1	0	0	0	0	0	0	0	0	0	0	0	0	0	0	0	0	0	0	0	0	0
4-Jan	SW2	0	0	0	0	0	0	20	0	0	0	0	0	0	0	0	0	0	0	0	0	20
4-Jan	SW3	0	0	0	0	0	0	0	0	0	0	0	0	0	0	0	0	0	0	0	0	0
Avg/Survey		0		0		0		20		0		0		0		0		0		0		20
5-Jan	PHFB	0	0	0	0	0	0	0	0	0	0	0	0	0	0	0	0	0	0	0	0	0
5-Jan	SWFB	0	0	0	0	0	0	0	0	0	0	0	0	0	0	0	0	0	0	0	0	0
5-Jan	PH1	4	0	0	0	0	0	0	0	0	0	0	0	0	0	0	0	0	0	0	0	4
5-Jan	PH2	0	0	0	0	0	0	0	0	0	0	0	0	0	0	0	0	0	0	0	0	0
5-Jan	PH3	0	0	0	0	0	0	0	0	0	0	0	0	0	0	0	0	0	0	0	0	0
5-Jan	SW1	0	0	0	0	0	0	0	0	0	0	0	0	0	0	0	0	0	0	0	0	0
5-Jan	SW2	0	0	0	0	0	0	20	0	0	0	0	0	0	0	0	0	0	0	0	0	20
5-Jan	SW3	0	0	0	0	0	0	0	0	0	0	0	0	0	0	0	0	0	0	0	0	0
Avg/Survey		4		0		0		20		0		0		0		0		0		0		24
6-Jan	PHFB	0	0	0	0	0	0	0	0	0	0	0	0	0	0	0	0	0	0	0	0	0
6-Jan	SWFB	0	0	0	0	0	0	0	0	0	0	0	0	0	0	0	0	0	0	0	0	0
6-Jan	PH1	3	0	0	0	0	0	0	0	0	0	0	0	0	0	0	0	0	0	0	0	3
6-Jan	PH2	0	0	0	0	0	0	0	0	0	0	0	0	0	0	0	0	0	0	0	0	0
6-Jan	PH3	0	0	0	0	0	0	0	0	0	0	0	0	0	0	1	0	0	0	0	0	1
6-Jan	SW1	0	0	0	0	0	0	0	0	0	0	0	0	0	0	0	0	0	0	0	0	0
6-Jan	SW2	0	0	0	0	0	0	30	0	0	0	0	0	0	0	0	0	0	0	0	0	30
6-Jan	SW3	0	0	0	0	0	0	0	0	0	0	0	0	0	0	0	0	0	0	0	0	0
Avg/Survey		3		0		0		30		0		0		0		1		0		0		34

Foraging Piscivorous Birds



Non-Foraging Piscivorous Birds





Installing a HOBO Temperature Probe in the North Fish Ladder