

FISHWAY STATUS REPORT - JOHN DAY DAM

Date: 12/19/2020

Inspection Period: 12/13/2020 thru 12/19/2020



**US Army Corps
of Engineers**
Portland District

JD/WC Project-Fisheries
P.O. Box 823
Rufus, Oregon 97050
Phone: 541-506-7860

All JD Fishways are inspected twice per day during fish passage season, Mar. 1 - Nov. 30.
Additional and frequent monitoring, of the PLC displays in SMF Fisheries Office, as necessary.

John Day Dam	Inspection OOC	Criteria Limit	Total Number of Inspections: 7			Temperature: 44.8 F	Secchi: 6.0 Ft.
NORTH FISHWAY							
Exit differential	0	≤ 0.5'					
Exit Control weirs	0	High setting	High setting is normal				
Count station differential	0	≤ 0.3'					
Entrance differential	0	1.0' - 2.0'	AVG (Ft.)	1.5			
SOUTH FISHWAY							
Exit differential	0	≤ 0.5'					
Exit Control weirs	0	Mid setting	Mid setting is normal				
Count station differential	0	≤ 0.3'					
Weir crest depth (US gauge)	0	1.0' ± 0.1'					
South entrance differential	0	1.0' - 2.0'	AVG (Ft.)	1.2			
Entrance weir SE1	0	depth (≥ 8')	AVG (Ft.)	8.9			
Collection channel velocity	0	1.5 - 4 fps	AVG (Ft.)	2.52			
N. Entrance PH(Bay 19)differential	0	1.0' - 2.0'	AVG (Ft.)	1.4			
Entrance weir NE1	0	depth (≥ 8')	AVG (Ft.)	9.6			
Entrance weir NE2	0	depth (≥ 8')	AVG (Ft.)	9.8			
JUVENILE PASSAGE							
Forebay/bypass conduit differential	0	4.0' - 5.0'	AVG (Ft.)	4.7			
Submersible traveling screens	0	visual inspect	Last Visual Inspection		Next Visual Inspection		
Turbine trashrack drawdown	0	<1.5', wkly					
Vert barrier screen drawdown	0	<1.5', wkly					
Spill volume	0	per FPP	Avg (kcfs)	1.6	Avg %	1.1	
Spill pattern	0	per FPP					
Turbine Unit Priority	0	per FPP					
Turbine 1% Efficiency	0	per FPP					

Fisheries Related Operations

Smolt Monitoring Operations:

Smolt Monitoring Facility has been dewatered for the winter.

Adult Ladder Operations:

JD South Adult Fishway is operating within criteria. South Fish ladder is scheduled to be dewatered mid-January.
JD North Adult Fishway is dewatered.

Project Operations:

Current outages: MU1, MU2, MU3, MU4, MU6, MU7, MU9, MU12.
Tailwater Average Weekly TDG-98.1

Maintenance:

JD North Fishway's pump 4 has been pulled for maintenance. - JD Maintenance continue repairs of AWS fish pump 4. RTS has yet TBD.
Calibration - All gauges within the 0.3' criteria.

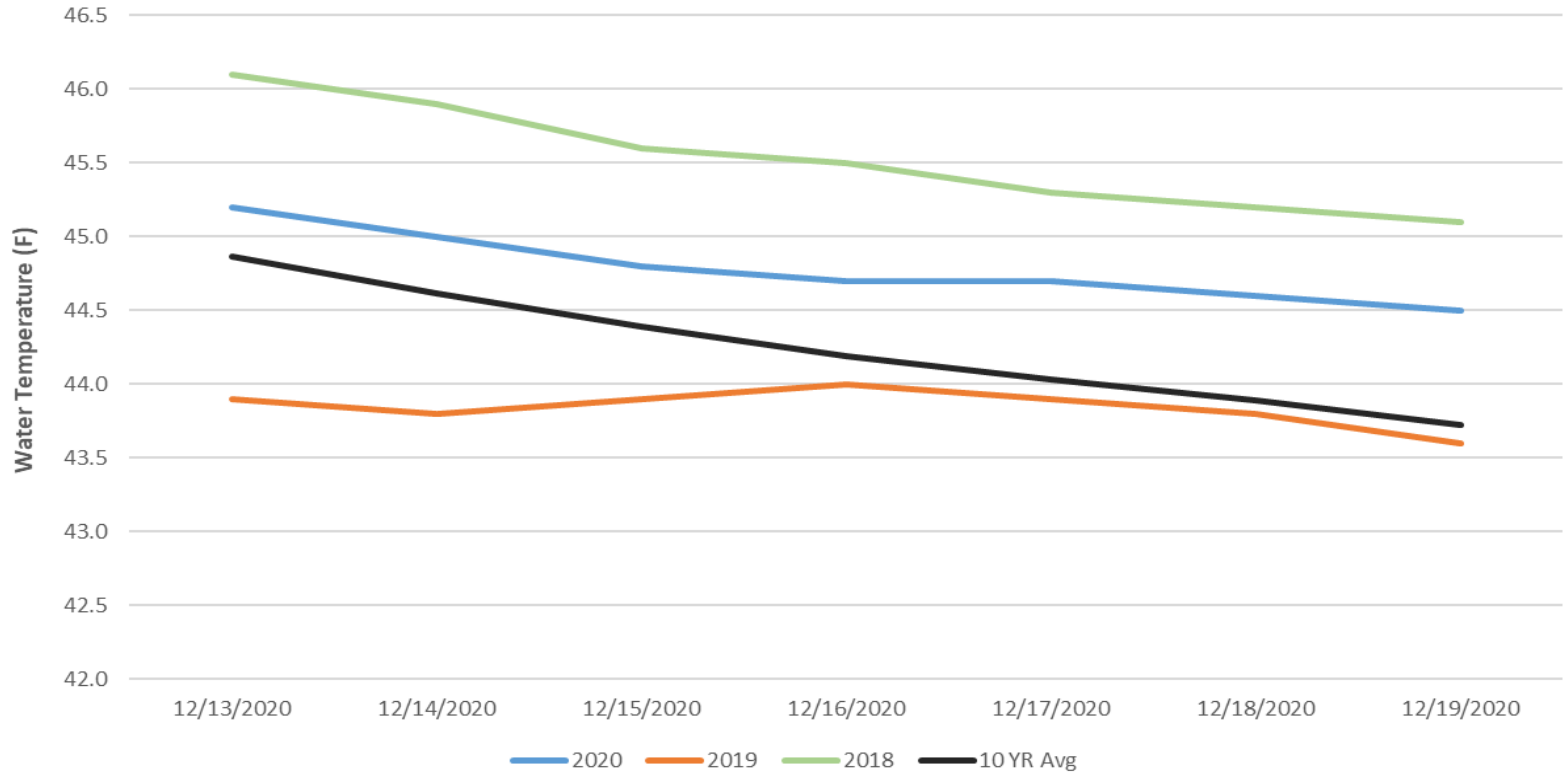
Bird Data:

Decreasing foraging and non foraging gulls this week. (see 'Bird Count' tab for details).
1 of 125 avian lines down, will need to be replaced
Pelicans on Preacher's Island: averaged 0 per day

Research:

Approved by: Brett Call, OPM

John Day Dam Water Temperatures (F)



JDA Collection Channel Velocity

FPP Criteria: 1.5–4.0 feet per second (2 fps optimum)

Date	Measurement Location	Speed (ft/sec)	SFL Turbine RPMs (1,2,3)	Bay 19 TW (ft)
12/19/2020	Unit 4	2.47	0,68,68	159.9
12/19/2020	Unit 12	2.57	0,68,68	159.9

Average Weekly Velocity (ft/sec)

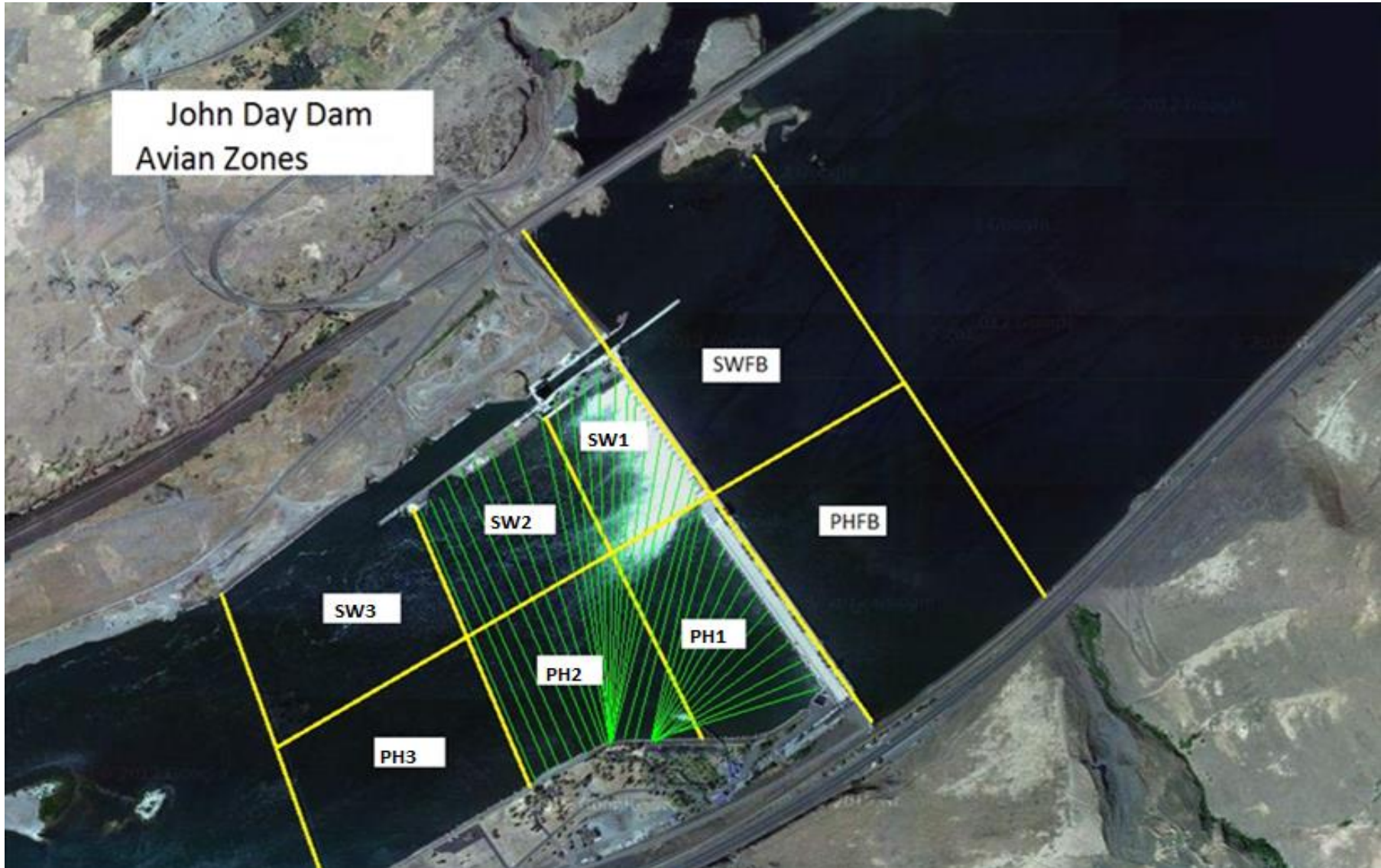
2.52

JOHN DAY WEEKLY AVERAGES

	NE1 (Ft)	NE2 (Ft)	S.Ent (Ft)	SE1 (Ft)	N.Ent (Ft)	JBS Diff (Ft)	Bay19 (Ft)	Spill Vol. (kcfs)	Spill %	# Spillbays
Sunday	9.5	9.7	1.1	9.2		4.8	1.5			
Sunday										
Monday	10.4	10.6	1.2	10.0		4.9	1.3			
Monday										
Tuesday	9.7	9.9	1.1	9.4		4.9	1.5			
Tuesday										
Wednesday	9.7	9.9	1.0	9.4		5.0	1.5			
Wednesday										
Thursday	10.2	10.4	1.0	9.6		4.9	1.2			
Thursday										
Friday	9.7	9.9	1.2	8.8		4.7	1.4			
Friday										
Saturday	9.1	9.3	1.3	8.4		4.6	1.3			
Saturday										
AVG:	9.6	9.8	1.2	8.9	1.5	4.7	1.4	1.6	1.1	1.0

	Temp (F)	Secchi (Ft)	Fallbacks	Pelicans on Island
Sunday	45.2	6.0	N/A	0
Monday	45.0	6.0	N/A	0
Tuesday	44.8	6.0	N/A	0
Wednesday	44.7	6.0	N/A	1
Thursday	44.7	6.0	N/A	1
Friday	44.6	6.0	N/A	1
Saturday	44.5	6.0	N/A	0
AVG	44.8	6.0	N/A	0

John Day Dam
Avian Zones

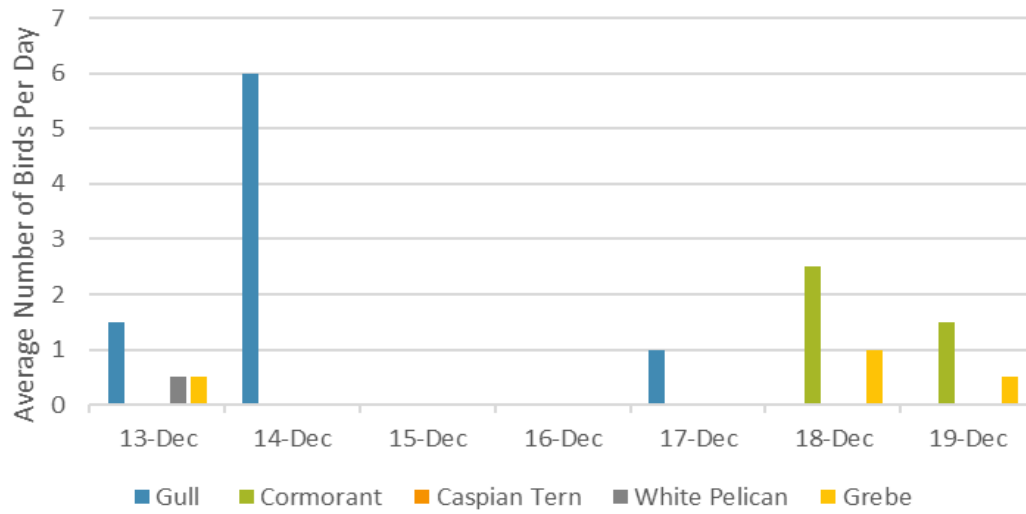


JDA Bird Counts: 12/13/20 to 12/19/20

F(1): Forage AM survey F(2): Forage PM Survey NF(1): Non-Forage AM Survey NF(2): Non-Forage PM Survey

Date	Zone	Gulls				Cormorant				Caspian tern				White Pelican				Grebe				Total
		F(1)	F(2)	NF(1)	NF(2)	F(1)	F(2)	NF(1)	NF(2)	F(1)	F(2)	NF(1)	NF(2)	F(1)	F(2)	NF(1)	NF(2)	F(1)	F(2)	NF(1)	NF(2)	
13-Dec	PHFB	0	0	0	0	0	0	24	0	0	0	0	0	0	0	0	0	1	0	0	0	25
13-Dec	SWFB	0	0	29	0	0	0	0	0	0	0	0	0	0	0	0	0	0	0	0	0	29
13-Dec	PH1	2	0	0	0	0	0	0	0	0	0	0	0	0	0	0	0	0	0	0	0	2
13-Dec	PH2	1	0	0	0	0	0	0	0	0	0	0	0	0	0	0	0	0	0	0	0	1
13-Dec	PH3	0	0	0	0	0	0	0	0	0	0	0	0	1	0	0	0	0	0	0	0	1
13-Dec	SW1	0	0	0	0	0	0	0	0	0	0	0	0	0	0	0	0	0	0	0	0	0
13-Dec	SW2	0	0	0	0	0	0	0	0	0	0	0	0	0	0	0	0	0	0	0	0	0
13-Dec	SW3	0	0	0	0	0	0	0	0	0	0	0	0	0	0	0	0	0	0	0	0	0
Avg/Survey		2		15		0		12		0		0		1		0		1		0		58
14-Dec	PHFB	0	0	15	0	0	0	5	0	0	0	0	0	0	0	0	0	0	0	0	0	20
14-Dec	SWFB	0	0	0	0	0	0	0	0	0	0	0	0	0	0	0	0	0	0	0	0	0
14-Dec	PH1	12	0	0	0	0	0	0	0	0	0	0	0	0	0	0	0	0	0	0	0	12
14-Dec	PH2	0	0	0	0	0	0	0	0	0	0	0	0	0	0	0	0	0	0	0	0	0
14-Dec	PH3	0	0	0	0	0	0	0	0	0	0	0	0	0	0	0	0	0	0	0	0	0
14-Dec	SW1	0	0	0	0	0	0	0	0	0	0	0	0	0	0	0	0	0	0	0	0	0
14-Dec	SW2	0	0	0	0	0	0	0	0	0	0	0	0	0	0	0	0	0	0	0	0	0
14-Dec	SW3	0	0	0	0	0	0	0	0	0	0	0	0	0	0	0	0	0	0	0	0	0
Avg/Survey		6		8		0		3		0		0		0		0		0		0		32
15-Dec	PHFB	0	0	9	0	0	0	0	0	0	0	0	0	0	0	0	0	0	0	0	0	9
15-Dec	SWFB	0	0	35	0	0	0	0	0	0	0	0	0	0	0	0	0	0	0	0	0	35
15-Dec	PH1	0	0	0	0	0	0	0	0	0	0	0	0	0	0	0	0	0	0	0	0	0
15-Dec	PH2	0	0	0	0	0	0	0	0	0	0	0	0	0	0	0	0	0	0	0	0	0
15-Dec	PH3	0	0	0	0	0	0	0	0	0	0	0	0	0	0	0	0	0	0	0	0	0
15-Dec	SW1	0	0	0	0	0	0	0	0	0	0	0	0	0	0	0	0	0	0	0	0	0
15-Dec	SW2	0	0	0	0	0	0	0	0	0	0	0	0	0	0	0	0	0	0	0	0	0
15-Dec	SW3	0	0	0	0	0	0	0	0	0	0	0	0	0	0	0	0	0	0	0	0	0
Avg/Survey		0		22		0		0		0		0		0		0		0		0		44
16-Dec	PHFB	0	0	1	0	0	0	0	0	0	0	0	0	0	0	0	0	0	0	0	0	1
16-Dec	SWFB	0	0	50	0	0	0	3	0	0	0	0	0	0	0	0	0	0	0	0	0	53
16-Dec	PH1	0	0	0	0	0	0	0	0	0	0	0	0	0	0	0	0	0	0	0	0	0
16-Dec	PH2	0	0	0	0	0	0	0	0	0	0	0	0	0	0	0	0	0	0	0	0	0
16-Dec	PH3	0	0	0	0	0	0	0	0	0	0	0	0	0	0	0	0	0	0	0	0	0
16-Dec	SW1	0	0	0	0	0	0	0	0	0	0	0	0	0	0	0	0	0	0	0	0	0
16-Dec	SW2	0	0	0	0	0	0	0	0	0	0	0	0	0	0	0	0	0	0	0	0	0
16-Dec	SW3	0	0	0	0	0	0	0	0	0	0	0	0	0	0	0	0	0	0	0	0	0
Avg/Survey		0		26		0		2		0		0		0		0		0		0		54

Foraging Piscivorous Birds



Non-Foraging Piscivorous Birds

