

FISHWAY STATUS REPORT - JOHN DAY DAM

Date: 10/24/2020

Inspection Period: 10/18/2020 thru 10/24/2020



**US Army Corps
of Engineers**
Portland District

JD/WC Project-Fisheries
P.O. Box 823
Rufus, Oregon 97050
Phone: 541-506-7860

All JD Fishways are inspected twice per day during fish passage season, Mar. 1 - Nov. 30.
Additional and frequent monitoring, of the PLC displays in SMF Fisheries Office, as necessary.

John Day Dam	Inspection OOC	Criteria Limit	Total Number of Inspections: 14			Temperature:	61.5 F
						Secchi:	6.0 Ft.
NORTH FISHWAY							
Exit differential	0	≤ 0.5'					
Exit Control weirs	0	High setting	High setting is normal				
Count station differential	0	≤ 0.3'					
Entrance differential	0	1.0' - 2.0'	AVG (Ft.)	1.5			
SOUTH FISHWAY							
Exit differential	0	≤ 0.5'					
Exit Control weirs	0	Mid setting	Mid setting is normal				
Count station differential	0	≤ 0.3'					
Weir crest depth (US gauge)	0	1.0' ± 0.1'					
South entrance differential	0	1.0' - 2.0'	AVG (Ft.)	1.3			
Entrance weir SE1	0	depth (≥ 8')	AVG (Ft.)	8.1			
Collection channel velocity	0	1.5 - 4 fps	AVG (Ft.)	2.55			
N. Entrance PH(Bay 19)differential	0	1.0' - 2.0'	AVG (Ft.)	1.5			
Entrance weir NE1	0	depth (≥ 8')	AVG (Ft.)	9.0			
Entrance weir NE2	0	depth (≥ 8')	AVG (Ft.)	9.2			
JUVENILE PASSAGE							
Forebay/bypass conduit differential	0	4.0' - 5.0'	AVG (Ft.)	4.6			
Submersible traveling screens	0	visual inspect	Last Visual Inspection 9/14 - 9/17		Next Visual Inspection 10/26-10/29		
Turbine trashrack drawdown	0	<1.5', wkly					
Vert barrier screen drawdown	0	<1.5', wkly					
Spill volume	0	per FPP	Avg (kcfs)	1.6	Avg %	1.7	
Spill pattern	0	per FPP					
Turbine Unit Priority	0	per FPP					
Turbine 1% Efficiency	0	per FPP					

Fisheries Related Operations

Smolt Monitoring Operations:

Currently in bypass as sampling ended 15 September.

Adult Ladder Operations:

JD South Adult Fishway is operating within criteria.

JD North Adult Fishway is operating within criteria.

Project Operations:

Current outages: MU1, MU2, MU3, MU4, MU6, MU7, MU9, MU12.

Tailwater Average Weekly TDG-99.1

Maintenance:

JD North Fishway's pump 4 has been pulled for maintenance. - JD Maintenance continue repairs of AWS fish pump 4. RTS has yet TBD.

Calibration - All gauges within the 0.3' criteria.

Bird Data:

Few foraging gulls this week, decreasing number of foraging pelicans (see 'Bird Count' tab for details).

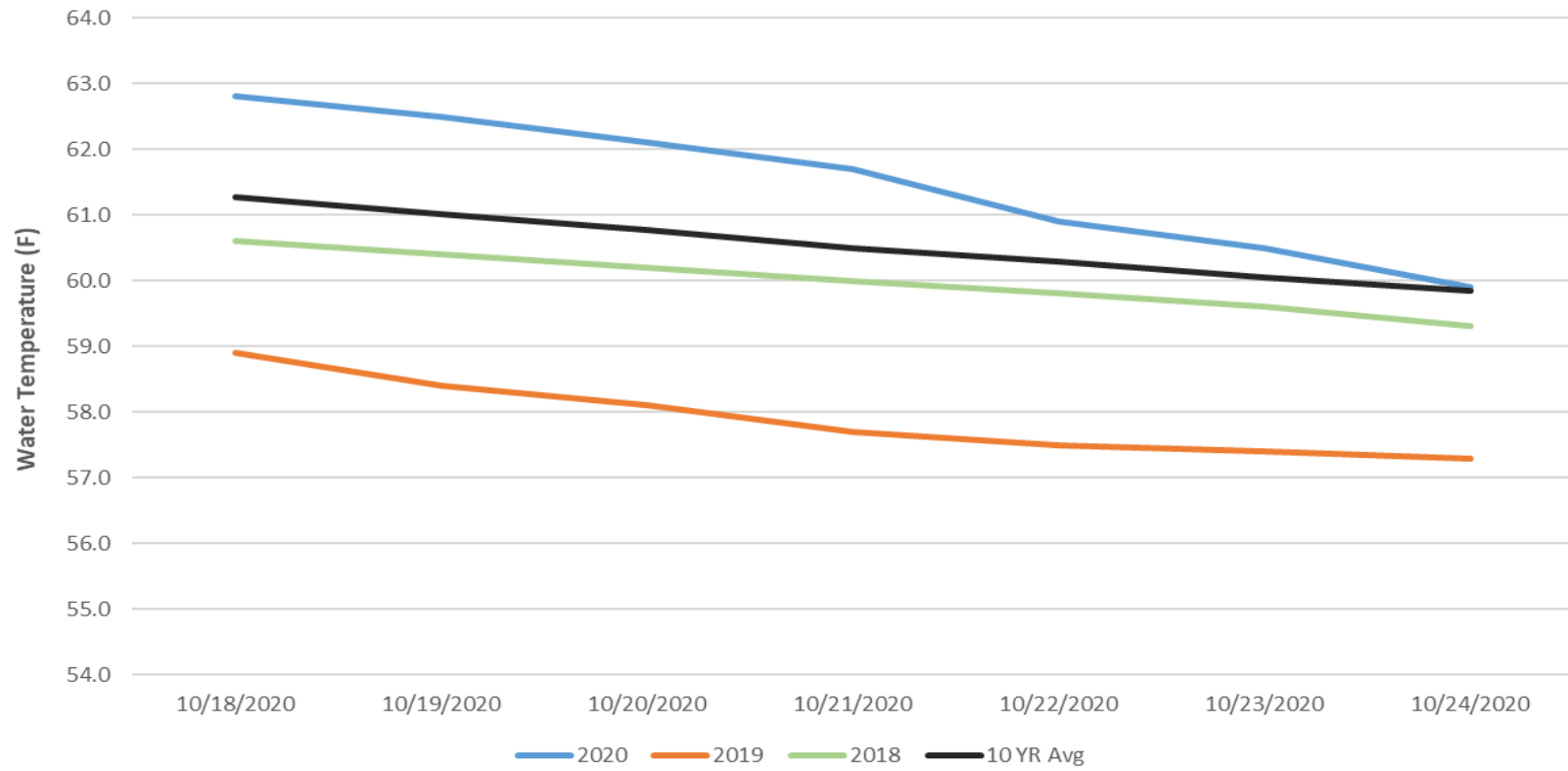
1 of 125 avian lines down, will need to be replaced

Pelicans on Preacher's Island: averaged 1 per day (see Pelicans tab)

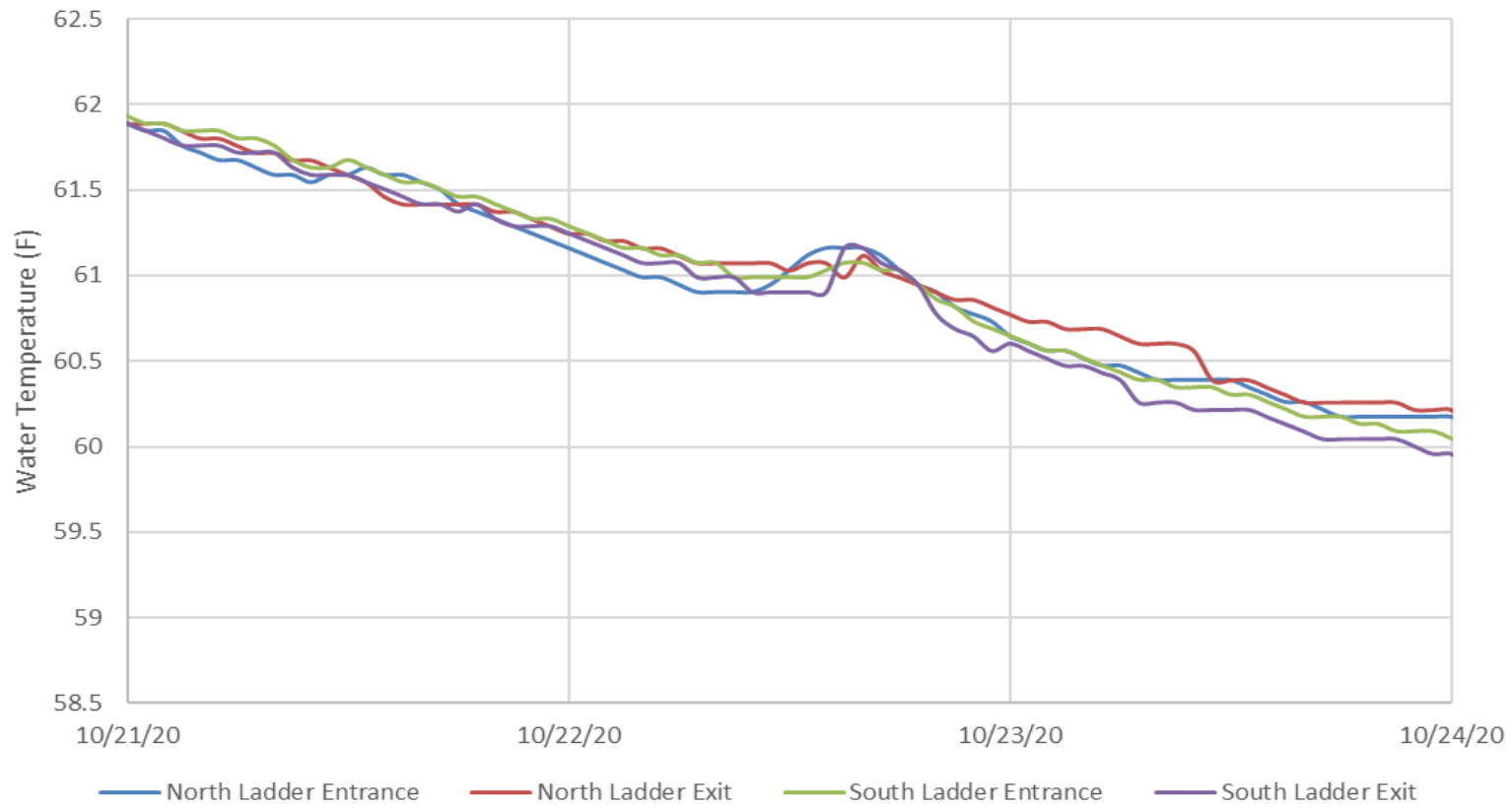
Research:

Approved by: Brett Call, OPM

John Day Dam Water Temperatures (F)



JDA Fish Ladder Water Temperatures (10/20/20 - 10/24/20)



JDA Collection Channel Velocity

FPP Criteria: 1.5–4.0 feet per second (2 fps optimum)

Date	Measurement Location	Speed (ft/sec)	SFL Turbine RPMs (1,2,3)	Bay 19 TW (ft)
10/19/2020	Unit 4	2.61	0,68,68	159.7
10/19/2020	Unit 12	2.64	0,68,68	159.7
10/22/2020	Unit 4	2.47	0,68,68	159.3
10/22/2020	Unit 12	2.27	0,68,68	159.3
10/24/2020	Unit 4	2.63	0,68,68	160.1
10/24/2020	Unit 12	2.68	0,68,68	160.1

Average Weekly Velocity (ft/sec)	2.55
----------------------------------	------

JOHN DAY WEEKLY AVERAGES

	NE1 (Ft)	NE2 (Ft)	S.Ent (Ft)	SE1 (Ft)	N.Ent (Ft)	JBS Diff (Ft)	Bay19 (Ft)	Spill Vol. (kcfs)	Spill %	# Spillbays
Sunday	9.2	9.4	1.3	8.4	1.6	4.7	1.4	1.6	1.6	1
Sunday	9.0	9.2	1.3	8.0	1.7	4.5	1.4	1.6	1.6	1
Monday	8.8	9.1	1.4	8.6	1.5	4.6	1.6	1.6	2.0	1
Monday	9.0	9.2	1.4	8.0	1.5	4.6	1.6	1.6	1.9	1
Tuesday	8.9	9.1	1.3	8.0	1.6	4.5	1.7	1.6	2.3	1
Tuesday	9.1	9.3	1.3	8.0	1.7	4.6	1.3	1.6	1.9	1
Wednesday	9.2	9.4	1.3	8.0	1.5	4.6	1.4	1.6	1.8	1
Wednesday	8.9	9.2	1.5	8.2	1.6	4.6	1.5	1.6	1.9	1
Thursday	9.1	9.3	1.4	8.0	1.4	4.6	1.5	1.6	1.6	1
Thursday	8.4	8.7	1.2	8.1	1.6	4.5	1.5	1.6	1.6	1
Friday	9.1	9.3	1.4	8.0	1.5	4.6	1.5	1.6	1.2	1
Friday	9.0	9.0	1.3	8.0	1.5	4.6	1.2	1.6	1.5	1
Saturday	9.2	9.5	1.3	8.2	1.5	4.6	1.4	1.6	1.5	1
Saturday	9.3	9.5	1.4	8.0	1.4	4.6	1.5	1.6	1.4	1
AVG:	9.0	9.2	1.3	8.1	1.5	4.6	1.5	1.6	1.7	1.0

	Temp (F)	Secchi (Ft)	Fallbacks	Pelicans on Island
Sunday	62.8	6.0	N/A	1
Monday	62.5	6.0	N/A	1
Tuesday	62.1	6.0	N/A	1
Wednesday	61.7	6.0	N/A	1
Thursday	60.9	6.0	N/A	0
Friday	60.5	6.0	N/A	0
Saturday	59.9	6.0	N/A	1

AVG	61.5	6.0	N/A	1
------------	-------------	------------	------------	----------

John Day Dam
Avian Zones



JDA Bird Counts: 10/18/20 to 10/24/20

F(1): Forage AM survey F(2): Forage PM Survey NF(1): Non-Forage AM Survey NF(2): Non-Forage PM Survey

Date	Zone	Gulls				Cormorant				Caspian tern				White Pelican				Grebe				Total
		F(1)	F(2)	NF(1)	NF(2)	F(1)	F(2)	NF(1)	NF(2)	F(1)	F(2)	NF(1)	NF(2)	F(1)	F(2)	NF(1)	NF(2)	F(1)	F(2)	NF(1)	NF(2)	
18-Oct	PHFB	0	0	0	0	0	0	22	0	0	0	0	0	0	0	0	0	125	136	0	0	283
18-Oct	SWFB	0	0	336	417	0	0	0	0	0	0	0	0	0	0	0	0	0	0	0	0	753
18-Oct	PH1	0	17	0	0	0	0	0	0	0	0	0	0	0	0	0	0	0	0	0	0	17
18-Oct	PH2	5	3	0	0	2	0	0	0	0	0	0	0	0	0	0	0	0	0	0	0	10
18-Oct	PH3	0	0	0	0	0	0	0	0	0	0	0	0	0	0	0	0	0	0	0	0	0
18-Oct	SW1	0	2	0	0	0	0	0	0	0	0	0	0	0	0	0	0	0	0	0	0	2
18-Oct	SW2	0	0	0	0	0	0	0	0	0	0	0	0	0	0	0	0	0	0	0	0	0
18-Oct	SW3	0	0	0	0	0	0	0	0	0	0	0	0	0	0	0	0	0	0	0	0	0
Avg/Survey		14		377		1		11		0		0		0		0		131		0		1065
19-Oct	PHFB	0	0	0	0	0	0	0	0	0	0	0	0	0	0	0	0	114	133	0	0	247
19-Oct	SWFB	0	0	285	405	0	0	0	0	0	0	0	0	0	0	0	0	0	0	0	0	690
19-Oct	PH1	0	7	0	0	7	0	0	0	0	0	0	0	0	0	0	0	0	0	0	0	14
19-Oct	PH2	0	3	0	0	0	3	0	0	0	0	0	0	0	0	0	0	0	0	0	0	6
19-Oct	PH3	0	0	0	0	0	0	0	0	0	0	0	0	0	0	0	0	0	0	0	0	0
19-Oct	SW1	0	0	0	0	0	0	0	0	0	0	0	0	0	0	0	0	0	0	0	0	0
19-Oct	SW2	0	0	0	0	0	0	19	0	0	0	0	0	0	0	0	0	0	0	0	0	19
19-Oct	SW3	0	0	0	0	0	0	0	0	0	0	0	0	0	0	0	0	0	0	0	0	0
Avg/Survey		5		345		5		10		0		0		0		0		124		0		976
20-Oct	PHFB	0	0	0	125	0	0	15	0	0	0	0	0	0	0	0	0	111	157	0	0	408
20-Oct	SWFB	0	0	282	335	0	0	0	0	0	0	0	0	0	0	0	0	0	0	0	0	617
20-Oct	PH1	0	4	0	0	6	0	0	0	0	0	0	0	0	0	0	0	0	0	0	0	10
20-Oct	PH2	3	0	0	0	0	0	0	0	0	0	0	0	0	0	0	0	0	0	0	0	3
20-Oct	PH3	0	4	0	0	0	0	0	0	0	0	0	0	0	0	0	0	0	0	0	0	4
20-Oct	SW1	0	2	0	0	0	0	0	0	0	0	0	0	0	0	0	0	0	0	0	0	2
20-Oct	SW2	0	0	0	0	0	0	7	23	0	0	0	0	0	0	0	0	0	0	0	0	30
20-Oct	SW3	0	7	0	0	0	0	0	0	0	0	0	0	0	0	0	0	0	0	0	0	7
Avg/Survey		10		371		3		23		0		0		0		0		134		0		1081
21-Oct	PHFB	0	0	0	0	11	0	0	0	0	0	0	0	0	0	0	0	143	127	0	0	281
21-Oct	SWFB	0	0	431	512	0	0	0	0	0	0	0	0	0	0	0	0	0	0	0	0	943
21-Oct	PH1	7	5	0	0	9	0	0	0	0	0	0	0	0	0	0	0	0	0	0	0	21
21-Oct	PH2	23	0	0	0	0	0	0	0	0	0	0	0	0	0	0	0	0	0	0	0	23
21-Oct	PH3	4	0	0	0	0	0	0	0	0	0	0	0	0	0	0	0	0	0	0	0	4
21-Oct	SW1	13	0	0	0	0	2	0	0	0	0	0	0	0	0	0	0	0	0	0	0	15
21-Oct	SW2	8	0	0	0	0	0	0	14	0	0	0	0	0	0	0	0	0	0	0	0	22
21-Oct	SW3	0	0	0	0	0	0	0	0	0	0	0	0	0	0	0	0	0	0	0	0	0
Avg/Survey		30		472		11		7		0		0		0		0		135		0		1309

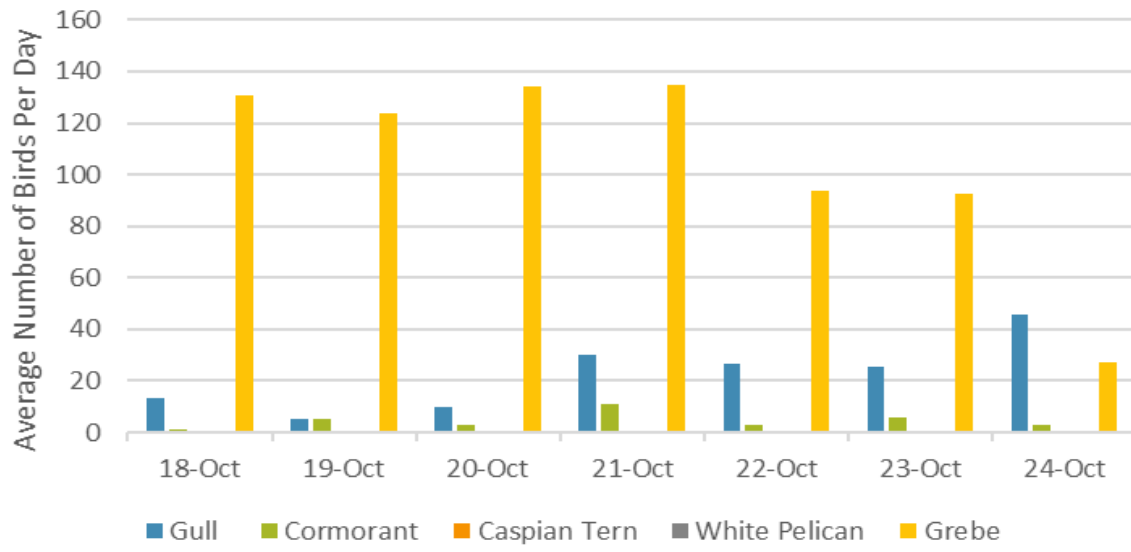
JDA Bird Counts: 10/18/20 to 10/24/20

NF(1): Non-Forage AM Survey NF(2): Non-Forage PM Survey

Date	Zone	Gulls				Cormorant				Caspian tern				White Pelican				Grebe				Total
		F(1)	F(2)	NF(1)	NF(2)	F(1)	F(2)	NF(1)	NF(2)	F(1)	F(2)	NF(1)	NF(2)	F(1)	F(2)	NF(1)	NF(2)	F(1)	F(2)	NF(1)	NF(2)	
22-Oct	PHFB	0	15	0	0	1	0	13	0	0	0	0	0	0	0	0	0	134	53	0	0	216
22-Oct	SWFB	0	0	223	265	0	0	0	0	0	0	0	0	0	0	0	0	0	0	0	0	488
22-Oct	PH1	4	4	0	0	2	3	0	0	0	0	0	0	0	0	0	0	0	0	0	0	13
22-Oct	PH2	8	13	0	0	0	0	0	0	0	0	0	0	0	0	0	0	0	0	0	0	21
22-Oct	PH3	3	2	0	0	0	0	0	0	0	0	0	0	0	0	0	0	0	0	0	0	5
22-Oct	SW1	0	3	0	0	0	0	0	0	0	0	0	0	0	0	0	0	0	0	0	0	3
22-Oct	SW2	1	0	0	0	0	0	6	21	0	0	0	0	0	0	0	0	0	0	0	0	28
22-Oct	SW3	0	0	0	0	0	0	7	0	0	0	0	0	0	0	0	0	0	0	0	0	7
Avg/Survey		27		244		3		24		0		0		0		0		94		0		781
23-Oct	PHFB	0	0	0	0	0	0	7	0	0	0	0	0	0	0	0	62	123	0	0	192	
23-Oct	SWFB	0	0	385	275	0	0	0	0	0	0	0	0	0	0	0	0	0	0	0	0	660
23-Oct	PH1	3	11	0	0	5	5	0	0	0	0	0	0	0	0	0	0	0	0	0	0	24
23-Oct	PH2	7	7	0	0	0	0	0	0	0	0	0	0	0	0	0	0	0	0	0	0	14
23-Oct	PH3	0	5	0	0	0	0	0	0	0	0	0	0	0	0	0	0	0	0	0	0	5
23-Oct	SW1	0	15	0	0	2	0	0	0	0	0	0	0	0	0	0	0	0	0	0	0	17
23-Oct	SW2	0	0	0	0	0	0	11	34	0	0	0	0	0	0	0	0	0	0	0	0	45
23-Oct	SW3	0	3	0	0	0	0	0	0	0	0	0	0	0	0	0	0	0	0	0	0	3
Avg/Survey		26		330		6		26		0		0		0		0		93		0		960
24-Oct	PHFB	0	0	0	0	0	0	12	0	0	0	0	0	0	0	0	54	0	0	0	0	66
24-Oct	SWFB	0	0	450	331	0	0	0	0	0	0	0	0	0	0	0	0	0	0	0	0	781
24-Oct	PH1	8	0	4	0	2	3	0	0	0	0	0	0	0	0	0	0	0	0	0	0	17
24-Oct	PH2	12	0	0	0	1	0	0	0	0	0	0	0	0	0	0	0	0	0	0	0	13
24-Oct	PH3	0	0	0	0	0	0	0	0	0	0	0	0	0	0	0	0	0	0	0	0	0
24-Oct	SW1	0	22	0	0	0	0	0	0	0	0	0	0	0	0	0	0	0	0	0	0	22
24-Oct	SW2	0	35	0	0	0	0	14	24	0	0	0	0	0	0	0	0	0	0	0	0	73
24-Oct	SW3	0	14	0	0	0	0	0	0	0	0	0	0	0	0	0	0	0	0	0	0	14
Avg/Survey		46		393		3		25		0		0		0		0		27		0		986

Totals	Gulls				Cormorant				Caspian tern				White Pelican				Grebe				Total
	F	NF	F	NF	F	NF	F	NF	F	NF	F	NF	F	NF	F	NF					
Weekly Total	312	5061	64	249	0	0	0	0	0	0	1472	0	0	105	0	7158					
Avg/Survey	22	362	5	18	0	0	0	0	0	0	105	0	0	105	0	511					

Foraging Piscivorous Birds



Non-Foraging Piscivorous Birds

