

FISHWAY STATUS REPORT

Date: 6/13/2020
Inspection Period: 6/7/2020 thru 6/13/2020

JOHN DAY DAM



JD/WC Project-Fisheries
P.O. Box 823
Rufus, Oregon 97050
Phone: 541-506-7860

All JD Fishways are inspected twice per day during fish passage season, Mar. 1 - Nov. 30.
Additional and frequent monitoring of the PLC displays in SMF Fisheries Office as necessary.

John Day Dam	Inspection OOC	Criteria Limit	Total Number of Inspections: 14	Temperature: 58.2 F
				Secchi: 4.1 Ft.
NORTH FISHWAY			NFW rts on 1/23	
Exit differential	0	≤ 0.5'		
Exit Control weirs	0	High setting		
Count station differential	0	≤ 0.3'		
Weir crest depth (DS gauge)	0	1.0' ± 0.1'		
Entrance differential	0	1.0' - 2.0'	AVG 1.5	
SOUTH FISHWAY			SFW rts on 2/28	
Exit differential	0	≤ 0.5'		
Exit Control weirs	0	Mid setting	Mid setting is normal for JDS	
Count station differential	0	≤ 0.3'		
Weir crest depth (US gauge)	0	1.0' ± 0.1'		
South entrance differential	0	1.0' - 2.0'	AVG 1.4	
Entrance weir SE1	2	depth (≥ 8')	AVG 8.2	
Collection channel velocity	0	1.5 - 4 fps	AVG 2.44	
N. Entrance PH(Bay 19)differential	0	1.0' - 2.0'	AVG 1.6	
Entrance weir NE1	0	depth (≥ 8')	AVG 11.5	
Entrance weir NE2	0	depth (≥ 8')	AVG 11.5	
JUVENILE PASSAGE				
Forebay/bypass conduit differential	0	4.0' - 5.0'	AVG 4.6	JBS rts 3/9/20
Submersible traveling screens	0	visual inspect		
Turbine trashrack drawdown	0	<1.5', wkly		
Vert barrier screen drawdown	0	<1.5', wkly		
Spill volume	0	per FPP		
Spill pattern	0	per FPP		
Turbine Unit Priority	0	per FPP		
Turbine 1% Efficiency	0	per FPP		

SMOLT MONITORING FACILITY

Operation:

Condition sampling started 4/01/2020 and with COVID-19 restrictions, Oregon and Washington stay at home orders, and USACE limited staffing levels, the SMF will continue limited conditioning sampling (every other day) until further notice.

Maintenance:

SMF SCADA update completed 17 March 2020. JD Electricians are working on SCADA programming and controls.

ADULT FISHWAYS & TW AVIAN GRID

Birds:

Steady number of gulls this week. See Bird Count tab for details.

All 125 avian lines in place without any deficiencies.

Operations:

JD South Adult Fishway is operating within criteria.

JD North Adult Fishway is operating within criteria.

JD Maintenance continue repairs of AWS fish pump 4. RTS has yet TBD.

Maintenance:

JD North Fishway's pump 4 has been pulled for maintenance.

Calibration: All gauges/ sensors are within the criteria of 0.3' .

Research:

CRITFC genetics study at SMF

Approved by: Ron Twiner, Acting OPM

JDA FOREBAY



JDA Collection Channel Velocity

Date	<i>13-Jun-20</i>
By:	<i>KRM</i>

Bay(s)	Time	Sec.	Velocity (f/s)
<i>0-2</i>	<i>1:22</i>	<i>82</i>	<i>2.20</i>
<i>2 - 4</i>	<i>2:32</i>	<i>152</i>	<i>2.57</i>
<i>4 - 6</i>	<i>3:51</i>	<i>231</i>	<i>2.28</i>
<i>6 - 8</i>	<i>5:06</i>	<i>306</i>	<i>2.40</i>
<i>8 - 10</i>	<i>6:26</i>	<i>386</i>	<i>2.25</i>
<i>10 - 12</i>	<i>7:39</i>	<i>459</i>	<i>2.47</i>
<i>12 - 14</i>	<i>8:54</i>	<i>534</i>	<i>2.40</i>
<i>14 - 16</i>	<i>10:07</i>	<i>607</i>	<i>2.47</i>
<i>16 - 18</i>	<i>11:09</i>	<i>669</i>	<i>2.90</i>
			2.44

Bay 19 TW	Level	162.8
Turbine 1	RPM	0
Turbine 2	RPM	68
Turbine 3	RPM	68

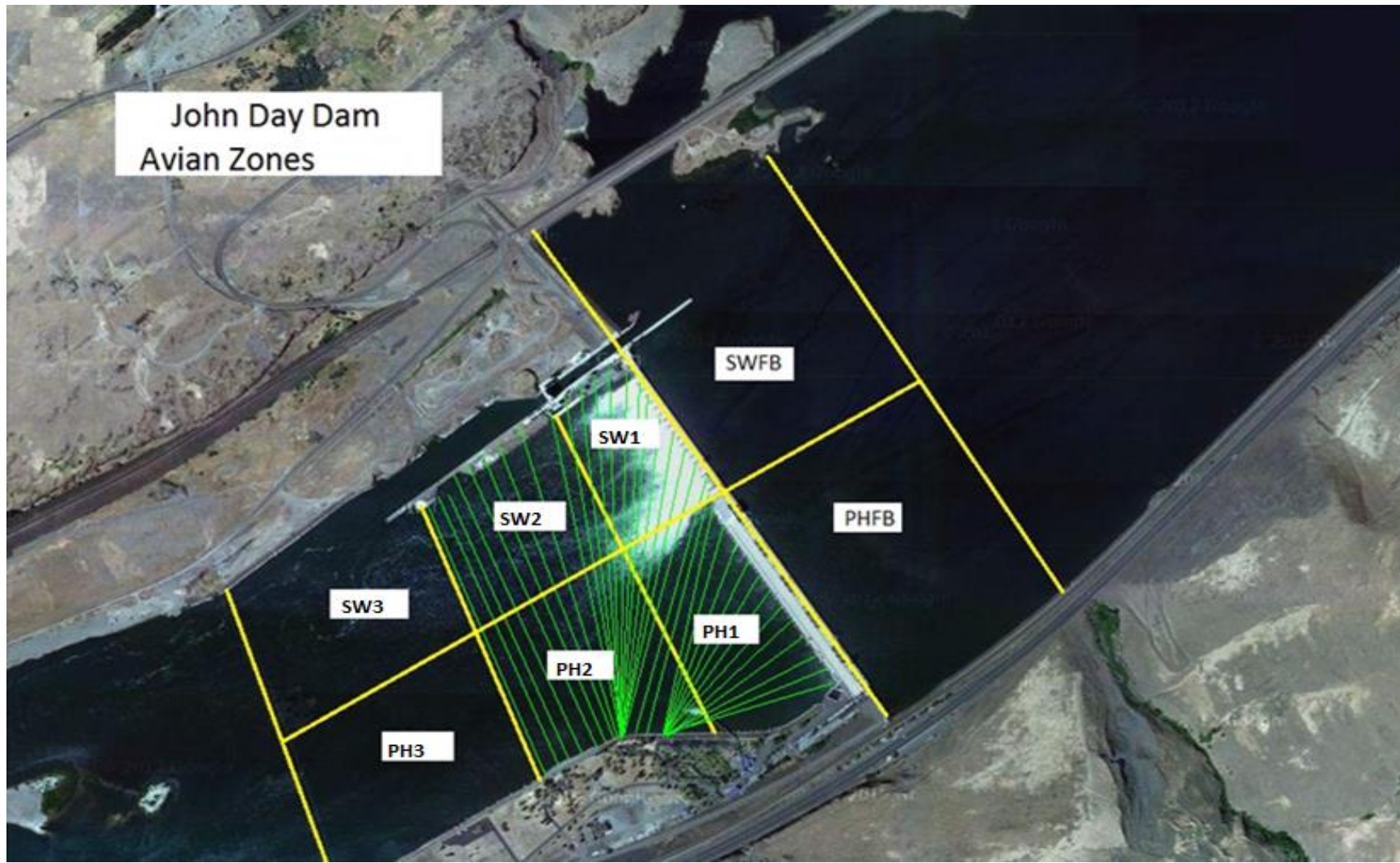
FPP Criteria: 1.5–4.0 feet per second (2 fps optimum)

John Day Weekly Averages

	Temp (F)		Secchi (Ft)		Fallbacks
Sun	58.6		4.0		
Mon	58.2		4.0		0
Tue	58.2		4.0		
Wed	57.7		4.0		8
Thur	58.0		4.5		
Fri	58.2		4.5		1
Sat	58.2		4.0		
AVG	58.2	AVG	4.1	AVG/Sample	3
				MAX	8
				MIN	0

	NE1 (Ft)	NE2 (Ft)	S.Ent (Ft)	SE1 (Ft)	N.Ent (Ft)	JBS Diff (Ft)	Bay19 (Ft)
Sun	12.6	12.6	1.3	9.0	1.6	4.6	1.6
Sun	12.7	12.7	1.3	9.3	1.3	4.5	1.7
Mon	13.1	13.1	1.4	7.7	1.6	4.5	1.8
Mon	12.4	12.4	1.4	8.0	1.5	4.5	1.8
Tues	9.9	9.9	1.4	8.0	1.6	4.5	1.6
Tues	9.6	9.6	1.4	8.1	1.4	4.5	1.7
Wed	8.3	8.3	1.5	8.3	1.3	4.6	1.8
Wed	9.3	9.3	1.5	8.0	1.6	4.6	1.4
Thur	11.7	11.7	1.4	8.0	1.6	4.6	1.7
Thur	12.1	12.1	1.2	7.8	1.6	4.6	2.0
Fri	12.4	12.4	1.6	8.0	1.5	4.6	1.5
Fri	12.8	12.8	1.5	8.0	1.6	4.5	1.2
Sat	11.5	11.5	1.6	8.0	1.6	4.6	1.6
Sat	11.9	11.9	1.5	8.0	1.4	4.6	1.2
AVG:	11.5	11.5	1.4	8.2	1.5	4.6	1.6

John Day Dam
Avian Zones



JDA Bird Counts: 6/7/20 to 6/13/20

NF(1): Non-Forage AM Survey NF(2): Non-Forage PM Survey

Date	Zone	Gulls				Cormorant				Caspian tern				White Pelican				Grebe				Total
		F(1)	F(2)	NF(1)	NF(2)	F(1)	F(2)	NF(1)	NF(2)	F(1)	F(2)	NF(1)	NF(2)	F(1)	F(2)	NF(1)	NF(2)	F(1)	F(2)	NF(1)	NF(2)	
7-Jun	PHFB	0	0	0	4	0	0	0	0	0	0	0	0	0	0	0	0	19	15	0	0	38 0 0 0 6 8 9 147
7-Jun	SWFB	0	0	0	0	0	0	0	0	0	0	0	0	0	0	0	0	0	0	0	0	
7-Jun	PH1	0	0	0	0	0	0	0	0	0	0	0	0	0	0	0	0	0	0	0	0	
7-Jun	PH2	0	0	0	0	0	0	0	0	0	0	0	0	0	0	0	0	0	0	0	0	
7-Jun	PH3	4	0	0	0	0	0	0	0	0	0	0	0	2	0	0	0	0	0	0	0	
7-Jun	SW1	5	3	0	0	0	0	0	0	0	0	0	0	0	0	0	0	0	0	0	0	
7-Jun	SW2	7	2	0	0	0	0	0	0	0	0	0	0	0	0	0	0	0	0	0	0	
7-Jun	SW3	74	67	0	0	0	0	0	0	0	0	0	0	6	0	0	0	0	0	0	0	
Avg/Survey		81		2		0		0		0		0		4		0		17		0		208
8-Jun	PHFB	0	0	0	0	0	0	0	0	0	0	0	0	0	0	0	0	19	18	0	0	37 0 0 0 2 0 4 53
8-Jun	SWFB	0	0	0	0	0	0	0	0	0	0	0	0	0	0	0	0	0	0	0	0	
8-Jun	PH1	0	0	0	0	0	0	0	0	0	0	0	0	0	0	0	0	0	0	0	0	
8-Jun	PH2	0	0	0	0	0	0	0	0	0	0	0	0	0	0	0	0	0	0	0	0	
8-Jun	PH3	0	2	0	0	0	0	0	0	0	0	0	0	0	0	0	0	0	0	0	0	
8-Jun	SW1	0	0	0	0	0	0	0	0	0	0	0	0	0	0	0	0	0	0	0	0	
8-Jun	SW2	0	4	0	0	0	0	0	0	0	0	0	0	0	0	0	0	0	0	0	0	
8-Jun	SW3	31	11	0	0	0	0	0	0	0	0	0	0	6	5	0	0	0	0	0	0	
Avg/Survey		24		0		0		0		0		0		6		0		19		0		96
9-Jun	PHFB	15	0	0	0	0	0	0	0	0	0	0	0	0	0	0	0	18	19	0	0	52 0 0 0 23 0 0 28
9-Jun	SWFB	0	0	0	0	0	0	0	0	0	0	0	0	0	0	0	0	0	0	0	0	
9-Jun	PH1	0	0	0	0	0	0	0	0	0	0	0	0	0	0	0	0	0	0	0	0	
9-Jun	PH2	0	0	0	0	0	0	0	0	0	0	0	0	0	0	0	0	0	0	0	0	
9-Jun	PH3	6	2	0	0	0	0	0	0	0	0	0	0	1	14	0	0	0	0	0	0	
9-Jun	SW1	0	0	0	0	0	0	0	0	0	0	0	0	0	0	0	0	0	0	0	0	
9-Jun	SW2	0	0	0	0	0	0	0	0	0	0	0	0	0	0	0	0	0	0	0	0	
9-Jun	SW3	2	17	0	0	0	0	0	0	0	0	0	0	3	6	0	0	0	0	0	0	
Avg/Survey		21		0		0		0		0		0		12		0		19		0		103
10-Jun	PHFB	0	0	2	24	0	0	0	0	0	0	0	0	0	0	0	0	14	11	0	0	51 0 0 2 6 5 14 31
10-Jun	SWFB	0	0	0	0	0	0	0	0	0	0	0	0	0	0	0	0	0	0	0	0	
10-Jun	PH1	0	0	0	0	0	0	0	0	0	0	0	0	0	0	0	0	0	0	0	0	
10-Jun	PH2	0	0	0	0	0	0	0	0	0	0	0	0	2	0	0	0	0	0	0	0	
10-Jun	PH3	2	3	0	0	0	0	0	0	0	0	0	0	1	0	0	0	0	0	0	0	
10-Jun	SW1	0	0	0	0	0	0	0	0	0	0	0	0	0	5	0	0	0	0	0	0	
10-Jun	SW2	0	0	0	0	0	0	0	0	0	0	0	0	6	8	0	0	0	0	0	0	
10-Jun	SW3	7	22	0	0	0	0	0	0	0	0	0	0	2	0	0	0	0	0	0	0	
Avg/Survey		17		13		0		0		0		0		12		0		13		0		109

JDA Bird Counts: 6/7/20 to 6/13/20

NF(1): Non-Forage AM Survey NF(2): Non-Forage PM Survey

Date	Zone	Gulls				Cormorant				Caspian tern				White Pelican				Grebe				Total
		F(1)	F(2)	NF(1)	NF(2)	F(1)	F(2)	NF(1)	NF(2)	F(1)	F(2)	NF(1)	NF(2)	F(1)	F(2)	NF(1)	NF(2)	F(1)	F(2)	NF(1)	NF(2)	
11-Jun	PHFB	20	0	0	0	0	0	0	0	0	0	0	0	0	0	0	0	25	15	0	0	60
11-Jun	SWFB	0	0	0	0	0	0	0	0	0	0	0	0	0	0	0	0	0	0	0	0	0
11-Jun	PH1	0	0	0	0	0	0	0	0	0	0	0	0	0	1	0	0	0	0	0	0	1
11-Jun	PH2	3	0	0	0	0	0	0	0	0	0	0	0	2	8	0	0	0	0	0	0	13
11-Jun	PH3	0	0	0	0	0	0	0	0	0	0	0	0	0	5	0	0	0	0	0	0	5
11-Jun	SW1	0	0	0	0	0	0	0	0	0	0	0	0	5	2	0	0	0	0	0	0	7
11-Jun	SW2	10	0	0	0	0	0	0	0	0	0	0	0	10	3	0	0	0	0	0	0	23
11-Jun	SW3	0	6	0	0	0	0	0	0	0	0	0	0	10	5	0	0	0	0	0	0	21
Avg/Survey		20		0		0		0		0		0		26		0		20		0		130
12-Jun	PHFB	1	0	0	0	0	0	0	0	0	0	0	0	0	0	0	0	15	12	0	0	28
12-Jun	SWFB	0	0	0	0	0	0	0	0	0	0	0	0	0	0	0	0	0	0	0	0	0
12-Jun	PH1	0	0	0	0	0	0	0	0	0	0	0	0	0	0	0	0	0	0	0	0	0
12-Jun	PH2	0	0	0	0	0	0	0	0	0	0	0	0	0	0	0	0	0	0	0	0	0
12-Jun	PH3	0	0	0	0	0	0	0	0	0	0	0	0	2	0	0	0	0	0	0	0	2
12-Jun	SW1	0	0	0	0	0	0	0	0	0	0	0	0	0	0	0	0	0	0	0	0	0
12-Jun	SW2	0	0	0	0	0	0	0	0	0	0	0	0	0	0	0	0	0	0	0	0	0
12-Jun	SW3	0	0	0	0	0	0	0	0	0	0	0	0	6	0	0	0	0	0	0	0	6
Avg/Survey		1		0		0		0		0		0		4		0		14		0		36
13-Jun	PHFB	0	1	0	0	0	0	0	0	0	0	0	0	1	0	0	0	12	12	0	0	26
13-Jun	SWFB	0	0	0	0	0	0	0	0	0	0	0	0	0	0	0	0	0	0	0	0	0
13-Jun	PH1	0	0	0	0	0	0	0	0	0	0	0	0	0	0	0	0	0	0	0	0	0
13-Jun	PH2	0	0	0	0	0	0	0	0	0	0	0	0	0	0	0	0	0	0	0	0	0
13-Jun	PH3	10	0	0	0	0	0	0	0	0	0	0	0	0	0	0	0	0	0	0	0	10
13-Jun	SW1	0	0	0	0	0	0	0	0	0	0	0	0	0	0	0	0	0	0	0	0	0
13-Jun	SW2	10	0	0	0	0	0	0	0	0	0	0	0	0	0	0	0	0	0	0	0	10
13-Jun	SW3	20	0	0	0	0	0	0	0	0	0	0	0	10	20	0	0	0	0	0	0	50
Avg/Survey		21		0		0		0		0		0		16		0		12		0		96
Totals		Gulls				Cormorant				Caspian tern				White Pelican				Grebe				Total
		F		NF		F		NF		F		NF		F		NF		F		NF		
Weekly Total		367		30		0		0		0		0		157		0		224		0		778
Avg/Survey		26		2		0		0		0		0		11		0		16		0		56