

FISHWAY STATUS REPORT

Date: 6/6/2020
Inspection Period: 5/31/2020 thru 6/6/2020

JOHN DAY DAM



JD/WC Project-Fisheries
 P.O. Box 823
 Rufus, Oregon 97050
 Phone: 541-506-7860

All JD Fishways are inspected twice per day during fish passage season, Mar. 1 - Nov. 30.
 Additional and frequent monitoring of the PLC displays in SMF Fisheries Office as necessary.

John Day Dam	Inspection OOC	Criteria Limit	Total Number of Inspections: 14	Temperature: 57.6 F
			Secchi: 3.5 Ft.	
NORTH FISHWAY			NFW rts on 1/23	
Exit differential	0	≤ 0.5'		
Exit Control weirs	0	High setting		
Count station differential	0	≤ 0.3'		
Weir crest depth (DS gauge)	0	1.0' ± 0.1'		
Entrance differential	0	1.0' - 2.0'	AVG 1.5	
SOUTH FISHWAY			SFW rts on 2/28	
Exit differential	0	≤ 0.5'		
Exit Control weirs	0	Mid setting	Mid setting is normal for JDS	
Count station differential	0	≤ 0.3'		
Weir crest depth (US gauge)	0	1.0' ± 0.1'		
South entrance differential	0	1.0' - 2.0'	AVG 1.3	
Entrance weir SE1	0	depth (≥ 8')	AVG 8.3	
Collection channel velocity	0	1.5 - 4 fps	AVG 2.93	
N. Entrance PH(Bay 19)differential	0	1.0' - 2.0'	AVG 1.5	
Entrance weir NE1	0	depth (≥ 8')	AVG 14.0	
Entrance weir NE2	0	depth (≥ 8')	AVG 14.0	
JUVENILE PASSAGE				
Forebay/bypass conduit differential	0	4.0' - 5.0'	AVG 4.6	JBS rts 3/9/20
Submersible traveling screens	0	visual inspect		
Turbine trashrack drawdown	0	<1.5', wkly		
Vert barrier screen drawdown	0	<1.5', wkly		
Spill volume	0	per FPP		
Spill pattern	0	per FPP		
Turbine Unit Priority	0	per FPP		
Turbine 1% Efficiency	0	per FPP		

SMOLT MONITORING FACILITY

Operation:

Condition sampling started 4/01/2020 and with COVID-19 restrictions, Oregon and Washington stay at home orders, and USACE limited staffing levels, the SMF will continue limited conditioning sampling (every other day) until further notice. MU16 forced OOS at 1640 on 6/5, oil sheen seen in "c" slot. STS replaced and MU16 RTS at 0910 on 6/6/2020.

Maintenance:

SMF SCADA update completed 17 March 2020. JD Electricians are working on SCADA programming and controls.

ADULT FISHWAYS & TW AVIAN GRID

Birds:

Steady number of gulls this week. See Bird Count tab for details.

All 125 avian lines in place without any deficiencies.

Operations:

JD South Adult Fishway is operating within criteria.

JD North Adult Fishway is operating within criteria.

JD Maintenance continue repairs of AWS fish pump 4. RTS has yet TBD.

MU 15 OOS 06/01/2020 for Annual/Actuator Tank. ETR 06/18/2020.

Maintenance:

JD North Fishway's pump 4 has been pulled for maintenance.

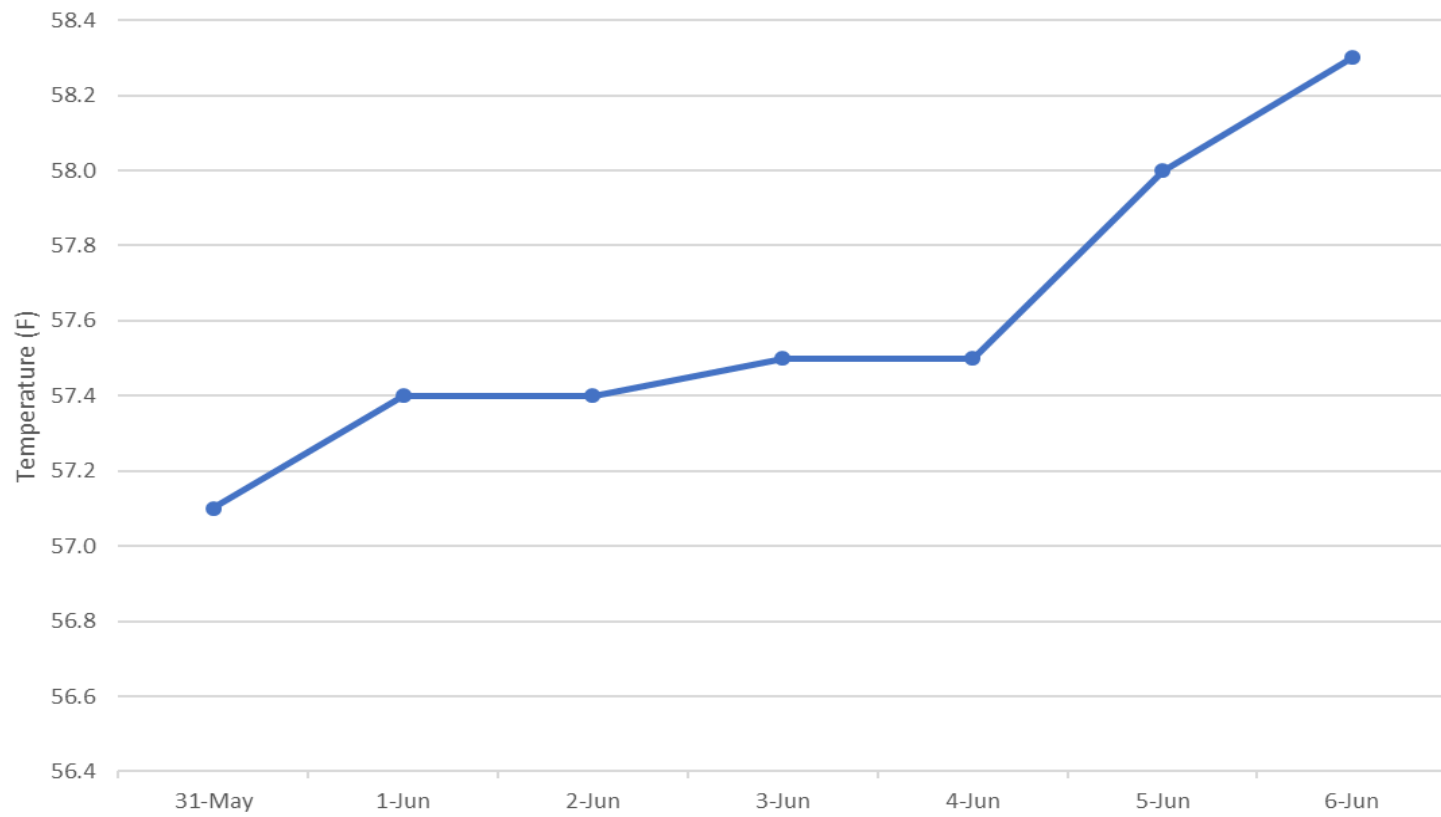
Calibration: All gauges/ sensors are within the criteria of 0.3' .

Research:

CRITFC genetics study at SMF

Approved by: Ron Twiner, Acting OPM

JDA Forebay



JDA Collection Channel Velocity

Date	<i>6-Jun-20</i>
By:	<i>LR</i>

Bay(s)	Time	Sec.	Velocity (f/s)
<i>0-2</i>	<i>1:02</i>	<i>62</i>	<i>2.90</i>
<i>2 - 4</i>	<i>1:52</i>	<i>112</i>	<i>3.60</i>
<i>4 - 6</i>	<i>3:04</i>	<i>184</i>	<i>2.50</i>
<i>6 - 8</i>	<i>4:04</i>	<i>244</i>	<i>3.00</i>
<i>8 - 10</i>	<i>5:24</i>	<i>324</i>	<i>2.25</i>
<i>10 - 12</i>	<i>6:15</i>	<i>375</i>	<i>3.53</i>
<i>12 - 14</i>	<i>7:16</i>	<i>436</i>	<i>2.95</i>
<i>14 - 16</i>	<i>8:24</i>	<i>504</i>	<i>2.65</i>
<i>16 - 18</i>	<i>9:25</i>	<i>565</i>	<i>2.95</i>
			2.93

Bay 19 TW	Level	164.2
Turbine 1	RPM	0
Turbine 2	RPM	68
Turbine 3	RPM	68

FPP Criteria: 1.5–4.0 feet per second (2 fps optimum)

John Day Weekly Averages

	Temp (F)	Secchi (Ft)	Fallbacks
Sun	57.1	3.5	11
Mon	57.4	3.5	
Tue	57.4	3.0	6
Wed	57.5	3.0	
Thur	57.5	3.5	7
Fri	58.0	4.0	
Sat	58.3	4.0	10
AVG:	57.6	AVG: 3.5	AVG/Sample 9
			MAX 11
			MIN 6

	NE1 (Ft)	NE2 (Ft)	S.Ent (Ft)	SE1 (Ft)	N.Ent (Ft)	JBS Diff (Ft)	Bay19 (Ft)
Sun	14.4	14.4	1.5	8.0	1.5	4.6	1.2
Sun	14.3	14.3	1.4	8.1	1.5	4.7	1.3
Mon	14.9	14.9	1.0	8.4	1.5	4.6	1.0
Mon	15.3	15.3	1.0	8.3	1.5	4.6	1.1
Tues	14.4	14.4	1.1	8.0	1.4	4.6	1.7
Tues	14.4	14.4	1.2	8.1	1.5	4.5	1.4
Wed	14.0	14.0	1.3	8.1	1.6	4.6	1.4
Wed	14.1	14.1	1.2	8.2	1.6	4.5	1.3
Thur	12.1	12.1	1.3	8.9	1.4	4.6	1.5
Thur	13.2	13.2	1.2	8.2	1.6	4.6	1.4
Fri	14.4	14.4	1.5	8.8	1.5	4.6	1.7
Fri	14.4	14.4	1.1	8.2	1.5	4.6	1.7
Sat	13.1	13.1	1.4	8.5	1.2	4.6	1.7
Sat	12.6	12.6	1.4	8.4	1.4	4.6	1.9
AVG:	14.0	14.0	1.3	8.3	1.5	4.6	1.5

JDA Bird Counts: 5/31/20 to 6/6/20

NF(1): Non-Forage AM Survey NF(2): Non-Forage PM Survey

Date	Zone	Gulls				Cormorant				Caspian tern				White Pelican				Grebe				Total
		F(1)	F(2)	NF(1)	NF(2)	F(1)	F(2)	NF(1)	NF(2)	F(1)	F(2)	NF(1)	NF(2)	F(1)	F(2)	NF(1)	NF(2)	F(1)	F(2)	NF(1)	NF(2)	
31-May	PHFB	0	6	7	0	0	0	0	0	0	0	0	0	0	0	0	0	15	21	10	0	59 0 0 0 25 0 0 32
31-May	SWFB	0	0	0	0	0	0	0	0	0	0	0	0	0	0	0	0	0	0	0	0	
31-May	PH1	0	0	0	0	0	0	0	0	0	0	0	0	0	0	0	0	0	0	0	0	
31-May	PH2	0	0	0	0	0	0	0	0	0	0	0	0	0	0	0	0	0	0	0	0	
31-May	PH3	0	25	0	0	0	0	0	0	0	0	0	0	0	0	0	0	0	0	0	0	
31-May	SW1	0	0	0	0	0	0	0	0	0	0	0	0	0	0	0	0	0	0	0	0	
31-May	SW2	0	0	0	0	0	0	0	0	0	0	0	0	0	0	0	0	0	0	0	0	
31-May	SW3	30	0	0	0	0	0	0	0	0	0	0	0	2	0	0	0	0	0	0	0	
Avg/Survey		31		4		0		0		0		0		1		0		18		5		116
1-Jun	PHFB	0	1	0	0	0	0	0	0	0	0	0	0	0	0	0	0	18	30	0	0	49 0 0 0 0 10 21 53
1-Jun	SWFB	0	0	0	0	0	0	0	0	0	0	0	0	0	0	0	0	0	0	0	0	
1-Jun	PH1	0	0	0	0	0	0	0	0	0	0	0	0	0	0	0	0	0	0	0	0	
1-Jun	PH2	0	0	0	0	0	0	0	0	0	0	0	0	0	0	0	0	0	0	0	0	
1-Jun	PH3	0	0	0	0	0	0	0	0	0	0	0	0	0	0	0	0	0	0	0	0	
1-Jun	SW1	10	0	0	0	0	0	0	0	0	0	0	0	0	0	0	0	0	0	0	0	
1-Jun	SW2	21	0	0	0	0	0	0	0	0	0	0	0	0	0	0	0	0	0	0	0	
1-Jun	SW3	30	20	0	0	0	0	0	0	0	0	0	0	3	0	0	0	0	0	0	0	
Avg/Survey		41		0		0		0		0		0		2		0		24		0		133
2-Jun	PHFB	0	0	0	2	0	0	0	0	0	0	0	0	0	0	0	0	19	19	0	0	40 4 0 0 17 0 1 71
2-Jun	SWFB	0	0	0	0	0	0	0	0	0	0	0	0	0	0	0	4	0	0	0	0	
2-Jun	PH1	0	0	0	0	0	0	0	0	0	0	0	0	0	0	0	0	0	0	0	0	
2-Jun	PH2	0	0	0	0	0	0	0	0	0	0	0	0	0	0	0	0	0	0	0	0	
2-Jun	PH3	12	5	0	0	0	0	0	0	0	0	0	0	0	0	0	0	0	0	0	0	
2-Jun	SW1	0	0	0	0	0	0	0	0	0	0	0	0	0	0	0	0	0	0	0	0	
2-Jun	SW2	0	0	0	0	0	0	0	0	0	0	0	0	0	1	0	0	0	0	0	0	
2-Jun	SW3	43	27	0	0	0	0	0	0	0	0	0	0	1	0	0	0	0	0	0	0	
Avg/Survey		44		1		0		0		0		0		1		2		19		0		133
3-Jun	PHFB	0	0	0	0	0	0	0	0	0	0	0	0	0	0	0	0	14	15	0	0	29 8 0 8 58 0 0 86
3-Jun	SWFB	0	0	8	0	0	0	0	0	0	0	0	0	0	0	0	0	0	0	0	0	
3-Jun	PH1	0	0	0	0	0	0	0	0	0	0	0	0	0	0	0	0	0	0	0	0	
3-Jun	PH2	8	0	0	0	0	0	0	0	0	0	0	0	0	0	0	0	0	0	0	0	
3-Jun	PH3	46	10	0	0	0	0	0	0	0	0	0	0	2	0	0	0	0	0	0	0	
3-Jun	SW1	0	0	0	0	0	0	0	0	0	0	0	0	0	0	0	0	0	0	0	0	
3-Jun	SW2	0	0	0	0	0	0	0	0	0	0	0	0	0	0	0	0	0	0	0	0	
3-Jun	SW3	64	22	0	0	0	0	0	0	0	0	0	0	0	0	0	0	0	0	0	0	
Avg/Survey		75		4		0		0		0		0		1		0		15		0		189

JDA Bird Counts: 5/31/20 to 6/6/20

NF(1): Non-Forage AM Survey NF(2): Non-Forage PM Survey

Date	Zone	Gulls				Cormorant				Caspian tern				White Pelican				Grebe				Total
		F(1)	F(2)	NF(1)	NF(2)	F(1)	F(2)	NF(1)	NF(2)	F(1)	F(2)	NF(1)	NF(2)	F(1)	F(2)	NF(1)	NF(2)	F(1)	F(2)	NF(1)	NF(2)	
4-Jun	PHFB	0	0	1	2	0	0	0	0	0	0	0	0	0	0	0	0	20	5	0	0	28
4-Jun	SWFB	0	0	0	0	0	0	0	0	0	0	0	0	0	0	0	0	0	0	0	0	0
4-Jun	PH1	0	0	0	0	0	0	0	0	0	0	0	0	0	0	0	0	0	0	0	0	0
4-Jun	PH2	10	0	0	0	0	0	0	0	0	0	0	0	0	0	0	0	0	0	0	0	10
4-Jun	PH3	3	0	0	0	0	0	0	0	0	0	0	0	0	0	0	0	0	0	0	0	3
4-Jun	SW1	0	0	0	0	0	0	0	0	0	0	0	0	0	0	0	0	0	0	0	0	0
4-Jun	SW2	0	0	0	0	0	0	0	0	0	0	0	0	0	0	0	0	0	0	0	0	0
4-Jun	SW3	33	17	0	0	0	0	0	0	0	0	0	0	0	0	0	0	0	0	0	0	50
Avg/Survey		32		2		0		0		0		0		0		0		13		0		91
5-Jun	PHFB	0	0	2	9	0	0	0	0	0	0	0	0	0	0	0	0	15	11	0	0	37
5-Jun	SWFB	0	0	0	0	0	0	0	0	0	0	0	0	0	0	0	0	0	0	0	0	0
5-Jun	PH1	0	0	0	0	0	0	0	0	0	0	0	0	0	0	0	0	0	0	0	0	0
5-Jun	PH2	0	0	0	0	0	0	0	0	0	0	0	0	0	0	0	0	0	0	0	0	0
5-Jun	PH3	0	3	0	0	0	0	0	0	0	0	0	0	0	4	0	0	0	0	0	0	7
5-Jun	SW1	0	0	0	0	0	0	0	0	0	0	0	0	0	0	0	0	0	0	0	0	0
5-Jun	SW2	0	0	0	0	0	0	0	0	0	0	0	0	0	0	0	0	0	0	0	0	0
5-Jun	SW3	33	49	0	0	0	0	0	0	0	0	0	0	0	12	0	0	0	0	0	0	94
Avg/Survey		43		6		0		0		0		0		8		0		13		0		138
6-Jun	PHFB	0	0	24	4	0	0	0	0	0	0	0	0	0	0	0	0	25	16	0	0	69
6-Jun	SWFB	0	0	0	0	0	0	0	0	0	0	0	0	0	0	0	0	0	0	0	0	0
6-Jun	PH1	0	0	0	0	0	0	0	0	0	0	0	0	0	0	0	0	0	0	0	0	0
6-Jun	PH2	0	0	0	0	0	0	0	0	0	0	0	0	5	6	0	0	0	0	0	0	11
6-Jun	PH3	0	0	0	0	0	0	0	0	0	0	0	0	0	0	0	0	0	0	0	0	0
6-Jun	SW1	0	0	0	0	0	0	0	0	0	0	0	0	0	0	0	0	0	0	0	0	0
6-Jun	SW2	0	5	0	0	0	0	0	0	0	0	0	0	0	0	0	0	0	0	0	0	5
6-Jun	SW3	57	75	0	0	0	0	0	0	0	0	0	0	8	1	0	0	0	0	0	0	141
Avg/Survey		69		14		0		0		0		0		10		0		21		0		226
Totals		Gulls				Cormorant				Caspian tern				White Pelican				Grebe				Total
		F		NF		F		NF		F		NF		F		NF		F		NF		
Weekly Total		665		59		0		0		0		0		45		4		243		10		1026
Avg/Survey		48		4		0		0		0		0		3		0		17		1		73

John Day Dam
Avian Zones

