


FISHWAY STATUS REPORT

Date: 7/12/2014
Inspection Period: 7/06 thru 7/12/2014

All JD Fishways are inspected twice per day during fish season, March. 1 - Nov. 31
 Frequent monitoring of the PLC displays in SMF Fisheries Office as necessary.

	JOHN DAY DAM	
	JD/WC Project-Fisheries P.O. Box 823 Rufus, Oregon 97050 Phone: 541-506-7860	

John Day Dam	Inspections	Criteria	Total Number of Inspections: 14	Temperature: 67 F
	Out of Criteria	Limit		Secchi: 4.6 Ft.
NORTH FISHWAY			In regular service. Five AWS pumps available since 4/11.	
Exit differential	0	≤ 0.5'		
Exit Control weirs	0	MID setting	Temporary Mid setting for Sockeye	
Count station differential	0	≤ 0.3'		
Weir crest depth (DS gauge)	0	1.3' ± 0.1'	Temporary 1.3' for shad passage since 5/22.	
Entrance differential	0	1.0' - 2.0'	AVG 1.5	
SOUTH FISHWAY			In regular service with all three AWS turbines.	
Exit differential	0	≤ 0.5'		
Exit Control weirs	0	MID setting	MID is normal for JDS	
Count station differential	0	≤ 0.3'		
Weir crest depth (US gauge)	0	1.3' ± 0.1'	Temporary 1.3' for shad passage since 5/22.	
South entrance differential	0	1.0' - 2.0'	AVG 1.4	
Entrance weir SE1	0	depth (≥ 8')	AVG 8.7	
Collection channel velocity	0	1.5 - 4 fps	AVG 3.25	
Bay 1 differential	0	1.0' - 2.0'	AVG 1.6	
N. Entrance PH(Bay 19)differential	0	1.0' - 2.0'	AVG 1.5	
Entrance weir NE1	0	depth (≥ 8')	AVG 8.4	
Entrance weir NE2	0	depth (≥ 8')	AVG 8.4	
JUVENILE PASSAGE			JBS/SMF in regular service since 3/30.	
Forebay/bypass conduit differential	0	4.0' - 5.0'	AVG 4.6	
Submersible traveling screens	0	visual inspect	Monthly camera STS inspection scheduled to the next week, 7/14	
Turbine trashrack drawdown	0	<1.5', wkly	Twice per week or more frequently if high debris loads/differentials are present	
Vert barrier screen drawdown	0	<1.5', wkly		
Spill volume	0	30/40 %	Per the PNNL experimental block design, changing every two days.	
Spill pattern	0	per FPP		
Turbine Unit Priority	0	per FPP		
Turbine 1% Efficiency	0	per FPP		

SMOLT MONITORING FACILITY

Operation: SMF is in sampling mode since 3/31 AM. Daily 24 hrs smolt sampling by PSMFC crew since 4/1.

JD Fisheries works regular 24/7 swing shift schedule as required by FPP; it will continue this until the end of sampling season on 9/15.

River Temps are approaching 70 F and the limited sampling schedule is likely to be implemented soon to protect the downstream migrants from unnecessary stress.

Debris: Moderate to light; primarily tumbleweeds with some sticks, branches, and wooden debris.

Maintenance: None

Research:

PNNL summer/ subyearling collection and tagging completed by 7/ 13. Monitoring of passing fish with hydrophones continues through the end of July.

US Fish and Wildlife Service's pilot tagging of adult lamprey started at JD SMF on 7/14 and will continue as long as the fish are available. The tagged fish are transported and released at Ice Harbor for the Snake River dams passage research.

Fallbacks: AVG: 219 MAX: 251 MIN: 181

OTHER ISSUES:

JOHN DAY

BIRDS : see the Avian Numbers tab. We report all species and locations, but in reality only gulls in the tailrace BRZ are relevant at JD.

USDA hazing from a boat started on 4/17; one 8 hrs shift, 7 days a week will continue through the end of July. A slight increase in numbers of gulls PM after hazing stops, but almost all are flying downstream of the avian tailrace BRZ grid. Gull predation at JD continues to be estimated as minimal.

124 out of 125 total primary lines are intact/ in place.

Operations:

JD North Fishway is in regular service and meeting the FPP criteria.

JD South Fishway in regular service and meeting the FPP criteria.

Maintenance:

JD North AWS pumps - five out of total six are available for service since 4/11. AWS pump # 4 continues in OOS status due to its lower bearing issues.

JD Engineering/contractor continue with its repairs.

Calibration: 7/11/2014 All sensors were within the criteria of 0.3' .

Gatewell Drawdown: 7/6 and 7/10 No units measured greater than 1.3 ft of differential for this reporting week.

Condition of smolts sampled at SMF was normal for this time of year, with no signs of elevated descaling during the entire week.

Research:

JD Fisheries continues coordinating with research groups performing 2014 studies:

Tribal collection of adult lamprey at JD began on 6/12; due to high catches in 2014, trapping is slated to end in the next few days.

PSMFC/WDFW dam angling from the JD PH tailrace deck for pikeminnow underway ; total YTD catch is 2,932 as of 7/13.

U of I Testing of JD North LPS (Lamprey Passage System) started in late June and continues very successful with a high diversion of adult lampreys.

PNNL Summer /Subyearling collection and tagging of fish at JD SMF completed by 7/13. Monitoring of marked fish with hydrophones continues through the end of July. Dismantling of gear and office trailers from forebay deck is scheduled for 8/4-8/11.

2014 Adult Salmonids counting by Normandeau Ass. continues through October 31 as required by FPP.

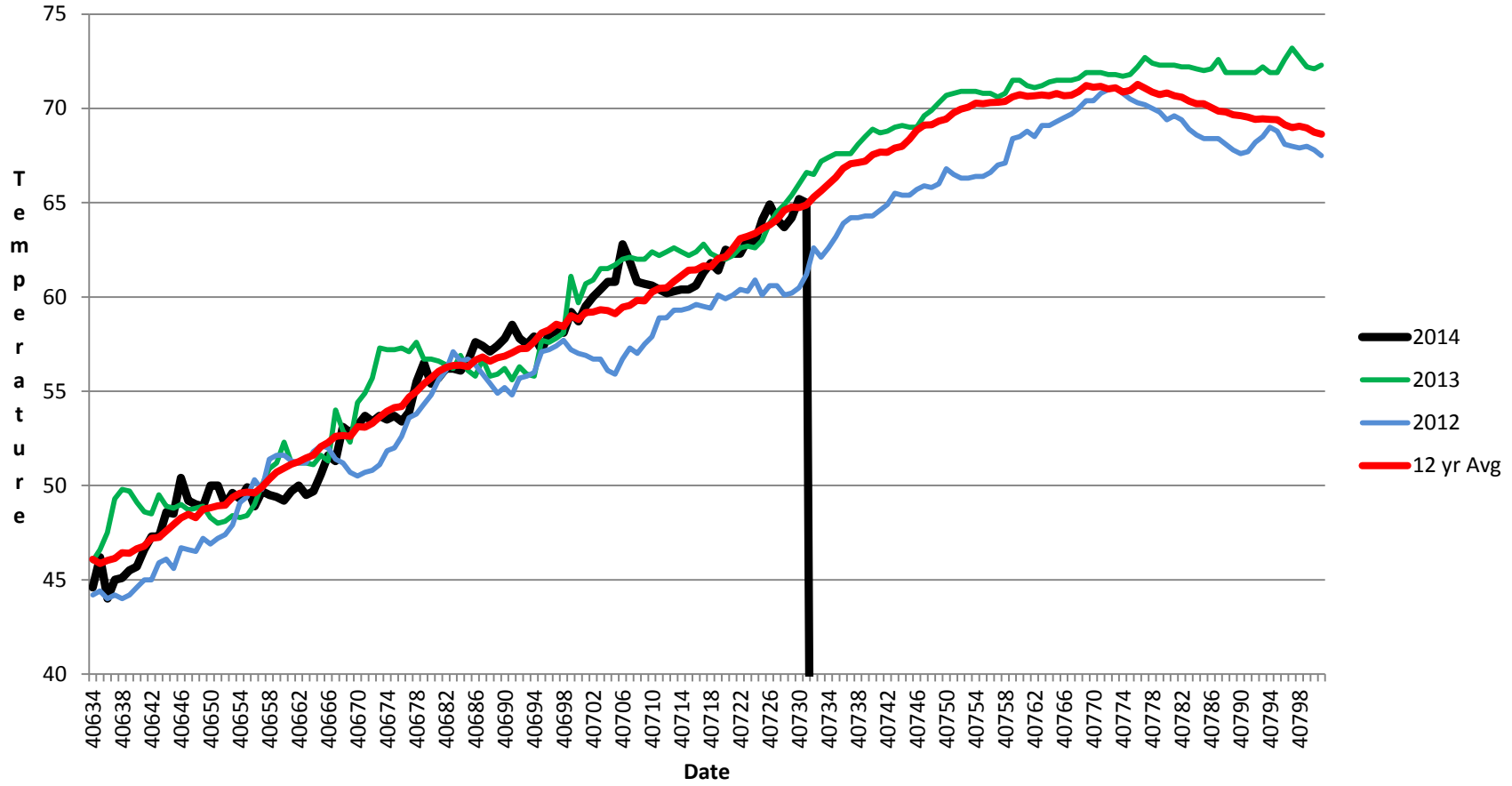
Adult Salmonids Radio telemetry evaluations are ongoing at both JD adult fishway. University of Idaho crew is in charge of detecting of all adult salmonids, which were tagged and released at Bonneville Dam.

Glen A. Smith PE

Date:___ 19-Jul-14

OPM John Day/Willow Creek Project

JDA SMF Water Temp



2014 JDA Piscivorous Bird Counts

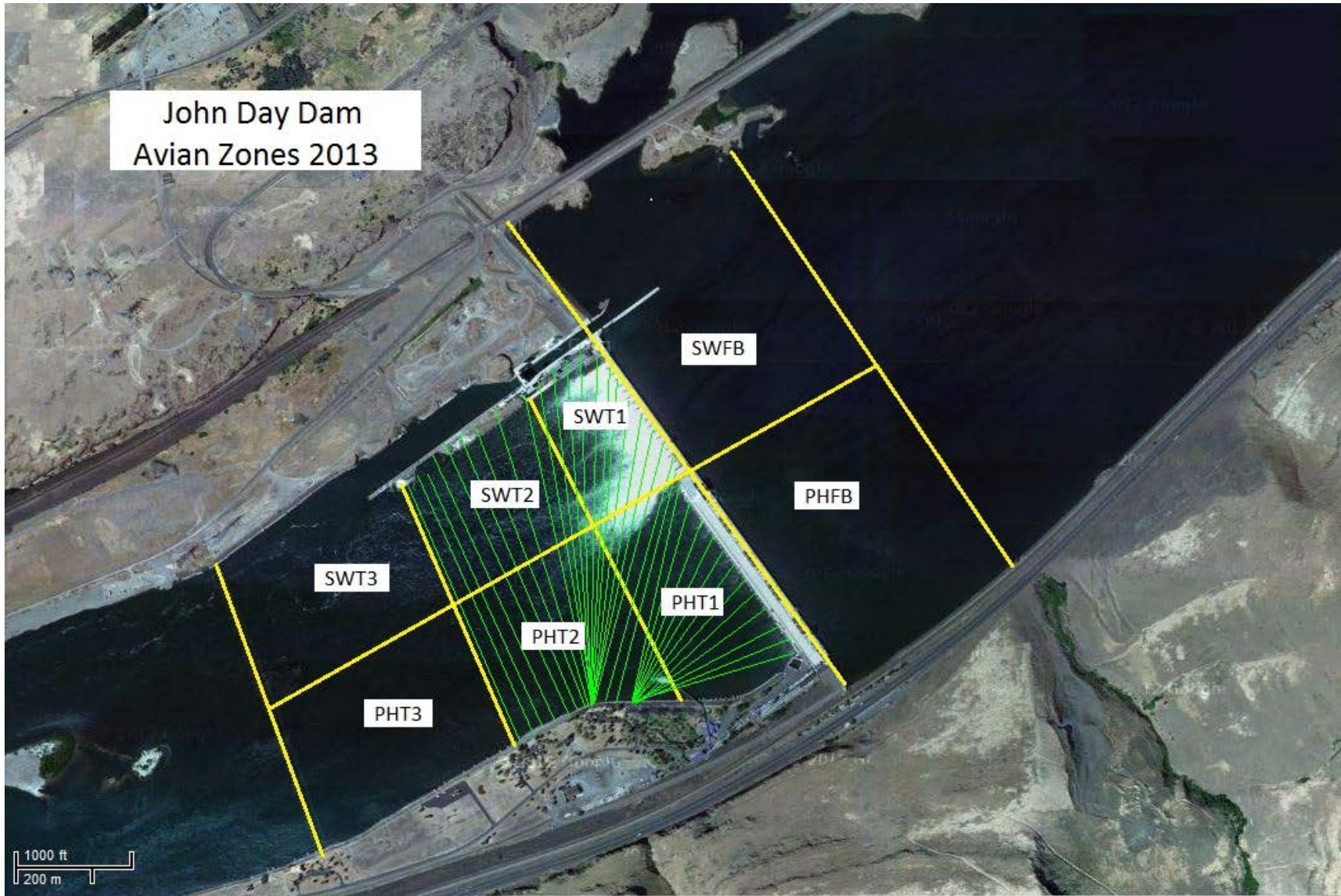
F=foraging, NF=non-foraging

Date	Session	Time (24 hr)	Zone	Gull		Cormorant		Caspian tern		AWPE		Grebe		Total birds in zone	Observer
				F	NF	F	NF	F	NF	F	NF	F	NF		
6-Jul-14	1-Jan-00	7:30	PHFB	0	28	0	0	0	0	3	0	6	6	12-Feb-00	PKR
6-Jul-14	1-Jan-00	7:30	SWFB	0	0	0	0	0	0	0	0	0	0	0-Jan-00	PKR
6-Jul-14	1-Jan-00	7:30	PH1	0	0	0	0	0	0	0	0	0	0	0-Jan-00	PKR
6-Jul-14	1-Jan-00	7:30	PH2	0	0	0	0	0	0	0	0	0	0	0-Jan-00	PKR
6-Jul-14	1-Jan-00	7:30	PH3	0	0	0	0	0	0	0	0	0	0	0-Jan-00	PKR
6-Jul-14	1-Jan-00	7:30	SW1	5	0	0	0	0	0	0	0	0	0	5-Jan-00	PKR
6-Jul-14	1-Jan-00	7:30	SW2	0	0	0	0	0	0	0	0	0	0	0-Jan-00	PKR
6-Jul-14	1-Jan-00	7:30	SW3	4	0	0	0	0	0	0	0	0	0	4-Jan-00	PKR
6-Jul-14	2-Jan-00	14:00	PHFB	0	10	0	0	0	0	10	0	6	6	1-Feb-00	PKR
6-Jul-14	2-Jan-00	14:00	SWFB	0	1	0	0	0	0	0	0	0	0	1-Jan-00	PKR
6-Jul-14	2-Jan-00	14:00	PH1	0	0	0	0	0	0	0	0	0	0	0-Jan-00	PKR
6-Jul-14	2-Jan-00	14:00	PH2	0	0	0	0	0	0	0	0	0	0	0-Jan-00	PKR
6-Jul-14	2-Jan-00	14:00	PH3	0	0	0	0	0	0	0	0	0	0	0-Jan-00	PKR
6-Jul-14	2-Jan-00	14:00	SW1	0	0	0	0	0	0	0	0	0	0	0-Jan-00	PKR
6-Jul-14	2-Jan-00	14:00	SW2	5	0	0	0	0	0	0	0	0	0	5-Jan-00	PKR
6-Jul-14	2-Jan-00	14:00	SW3	0	0	0	0	0	0	0	0	0	0	0-Jan-00	PKR
7-Jul-14	1-Jan-00	7:30	PHFB	0	16	0	0	0	0	14	0	5	5	9-Feb-00	PKR
7-Jul-14	1-Jan-00	7:30	SWFB	0	0	0	0	0	0	0	0	0	0	0-Jan-00	PKR
7-Jul-14	1-Jan-00	7:30	PH1	0	0	0	0	0	0	0	0	0	0	0-Jan-00	PKR
7-Jul-14	1-Jan-00	7:30	PH2	0	0	0	0	0	0	0	0	0	0	0-Jan-00	PKR
7-Jul-14	1-Jan-00	7:30	PH3	0	0	0	0	0	0	0	0	0	0	0-Jan-00	PKR
7-Jul-14	1-Jan-00	7:30	SW1	0	0	0	0	0	0	0	0	0	0	0-Jan-00	PKR
7-Jul-14	1-Jan-00	7:30	SW2	0	0	0	0	0	0	0	0	0	0	0-Jan-00	PKR
7-Jul-14	1-Jan-00	7:30	SW3	1	0	0	0	0	0	0	0	0	0	1-Jan-00	PKR
7-Jul-14	2-Jan-00	14:00	PHFB	0	1	0	0	0	0	0	0	1	0	2-Jan-00	PKR
7-Jul-14	2-Jan-00	14:00	SWFB	0	1	0	0	0	0	0	0	3	4	8-Jan-00	PKR
7-Jul-14	2-Jan-00	14:00	PH1	0	0	0	0	0	0	0	0	0	0	0-Jan-00	PKR
7-Jul-14	2-Jan-00	14:00	PH2	0	0	0	0	0	0	0	0	0	0	0-Jan-00	PKR
7-Jul-14	2-Jan-00	14:00	PH3	0	0	0	0	0	0	0	0	0	0	0-Jan-00	PKR
7-Jul-14	2-Jan-00	14:00	SW1	0	1	0	0	0	0	0	0	0	0	1-Jan-00	PKR
7-Jul-14	2-Jan-00	14:00	SW2	0	1	0	0	0	0	0	0	0	0	1-Jan-00	PKR
7-Jul-14	2-Jan-00	14:00	SW3	0	0	0	0	0	0	0	0	0	0	0-Jan-00	PKR
8-Jul-14	1-Jan-00	7:30	PHFB	0	1	0	0	0	0	1	0	8	7	17-Jan-00	PKR

8-Jul-14	1-Jan-00	7:30	SWFB	0	0	0	0	0	0	0	0	0	0	0-Jan-00	PKR
8-Jul-14	1-Jan-00	7:30	PH1	0	0	0	0	0	0	0	0	0	0	0-Jan-00	PKR
8-Jul-14	1-Jan-00	7:30	PH2	0	0	0	0	0	0	0	0	0	0	0-Jan-00	PKR
8-Jul-14	1-Jan-00	7:30	PH3	0	0	0	0	0	0	0	0	0	0	0-Jan-00	PKR
8-Jul-14	1-Jan-00	7:30	SW1	1	0	0	0	0	0	0	0	0	0	1-Jan-00	PKR
8-Jul-14	1-Jan-00	7:30	SW2	0	0	0	0	0	0	0	0	0	0	0-Jan-00	PKR
8-Jul-14	1-Jan-00	7:30	SW3	0	0	0	0	0	0	0	0	0	0	0-Jan-00	PKR
8-Jul-14	2-Jan-00	14:00	PHFB	0	4	0	0	0	0	7	0	4	4	19-Jan-00	PKR
8-Jul-14	2-Jan-00	14:00	SWFB	0	0	0	0	0	0	1	0	0	0	1-Jan-00	PKR
8-Jul-14	2-Jan-00	14:00	PH1	0	0	0	0	0	0	0	0	0	0	0-Jan-00	PKR
8-Jul-14	2-Jan-00	14:00	PH2	0	0	0	0	0	0	0	0	0	0	0-Jan-00	PKR
8-Jul-14	2-Jan-00	14:00	PH3	0	0	0	0	0	0	0	0	0	0	0-Jan-00	PKR
8-Jul-14	2-Jan-00	14:00	SW1	5	0	0	0	0	0	0	0	0	0	5-Jan-00	PKR
8-Jul-14	2-Jan-00	14:00	SW2	5	0	0	0	0	0	0	0	0	0	5-Jan-00	PKR
8-Jul-14	2-Jan-00	14:00	SW3	17	0	0	0	0	0	0	0	0	0	17-Jan-00	PKR
9-Jul-14	1-Jan-00	7:30	PHFB	0	2	0	0	0	0	1	0	4	4	11-Jan-00	PKR
9-Jul-14	1-Jan-00	7:30	SWFB	0	0	0	0	0	0	0	0	0	0	0-Jan-00	PKR
9-Jul-14	1-Jan-00	7:30	PH1	0	0	0	0	0	0	0	0	0	0	0-Jan-00	PKR
9-Jul-14	1-Jan-00	7:30	PH2	0	0	0	0	0	0	0	0	0	0	0-Jan-00	PKR
9-Jul-14	1-Jan-00	7:30	PH3	0	0	0	0	0	0	0	0	0	0	0-Jan-00	PKR
9-Jul-14	1-Jan-00	7:30	SW1	2	0	0	0	0	0	0	0	0	0	2-Jan-00	PKR
9-Jul-14	1-Jan-00	7:30	SW2	3	0	0	0	0	0	0	0	0	0	3-Jan-00	PKR
9-Jul-14	1-Jan-00	7:30	SW3	3	0	0	0	0	0	0	0	0	0	3-Jan-00	PKR
9-Jul-14	2-Jan-00	14:00	PHFB	0	1	0	0	0	0	1	0	4	4	10-Jan-00	PKR
9-Jul-14	2-Jan-00	14:00	SWFB	0	0	0	0	0	0	0	0	1	0	1-Jan-00	PKR
9-Jul-14	2-Jan-00	14:00	PH1	0	0	0	0	0	0	0	0	0	0	0-Jan-00	PKR
9-Jul-14	2-Jan-00	14:00	PH2	0	0	0	0	0	0	0	0	0	0	0-Jan-00	PKR
9-Jul-14	2-Jan-00	14:00	PH3	0	0	0	0	0	0	0	0	0	0	0-Jan-00	PKR
9-Jul-14	2-Jan-00	14:00	SW1	0	0	0	0	0	0	0	0	0	0	0-Jan-00	PKR
9-Jul-14	2-Jan-00	14:00	SW2	0	0	0	0	0	0	0	0	0	0	0-Jan-00	PKR
9-Jul-14	2-Jan-00	14:00	SW3	0	0	0	0	0	0	0	0	0	0	0-Jan-00	PKR
10-Jul-14	1-Jan-00	7:30	PHFB	0	18	0	0	0	0	4	0	4	4	30-Jan-00	PKR
10-Jul-14	1-Jan-00	7:30	SWFB	0	0	0	0	0	0	0	0	0	0	0-Jan-00	PKR
10-Jul-14	1-Jan-00	7:30	PH1	0	0	0	0	0	0	0	0	0	0	0-Jan-00	PKR
10-Jul-14	1-Jan-00	7:30	PH2	0	0	0	0	0	0	0	0	0	0	0-Jan-00	PKR
10-Jul-14	1-Jan-00	7:30	PH3	0	0	0	0	0	0	0	0	0	0	0-Jan-00	PKR
10-Jul-14	1-Jan-00	7:30	SW1	7	0	0	0	0	0	0	0	0	0	7-Jan-00	PKR
10-Jul-14	1-Jan-00	7:30	SW2	0	0	0	0	0	0	0	0	0	0	0-Jan-00	PKR
10-Jul-14	1-Jan-00	7:30	SW3	0	0	0	0	0	0	0	0	0	0	0-Jan-00	PKR
10-Jul-14	2-Jan-00	14:00	PHFB	0	8	0	0	0	0	0	0	6	5	19-Jan-00	PKR

10-Jul-14	2-Jan-00	14:00	SWFB	0	0	0	0	0	0	0	0	0	0	0-Jan-00	PKR
10-Jul-14	2-Jan-00	14:00	PH1	0	0	0	0	0	0	0	0	0	0	0-Jan-00	PKR
10-Jul-14	2-Jan-00	14:00	PH2	0	0	0	0	0	0	0	0	0	0	0-Jan-00	PKR
10-Jul-14	2-Jan-00	14:00	PH3	0	0	0	0	0	0	0	0	0	0	0-Jan-00	PKR
10-Jul-14	2-Jan-00	14:00	SW1	2	0	0	0	0	0	0	0	0	0	2-Jan-00	PKR
10-Jul-14	2-Jan-00	14:00	SW2	0	0	0	0	0	0	0	0	0	0	0-Jan-00	PKR
10-Jul-14	2-Jan-00	14:00	SW3	7	0	0	0	0	0	0	0	0	0	7-Jan-00	PKR
11-Jul-14	1-Jan-00	7:30	PHFB	0	4	0	0	0	0	0	0	9	7	20-Jan-00	PKR
11-Jul-14	1-Jan-00	7:30	SWFB	0	0	0	0	0	0	0	0	0	0	0-Jan-00	PKR
11-Jul-14	1-Jan-00	7:30	PH1	0	0	0	0	0	0	0	0	0	0	0-Jan-00	PKR
11-Jul-14	1-Jan-00	7:30	PH2	0	0	0	0	0	0	0	0	0	0	0-Jan-00	PKR
11-Jul-14	1-Jan-00	7:30	PH3	0	0	0	0	0	0	0	0	0	0	0-Jan-00	PKR
11-Jul-14	1-Jan-00	7:30	SW1	5	0	0	0	0	0	0	0	0	0	5-Jan-00	PKR
11-Jul-14	1-Jan-00	7:30	SW2	0	0	0	0	0	0	0	0	0	0	0-Jan-00	PKR
11-Jul-14	1-Jan-00	7:30	SW3	0	0	0	0	0	0	0	0	0	0	0-Jan-00	PKR
11-Jul-14	2-Jan-00	14:00	PHFB	0	1	0	0	0	0	0	0	9	7	17-Jan-00	PKR
11-Jul-14	2-Jan-00	14:00	SWFB	0	3	0	0	0	0	0	0	0	0	3-Jan-00	PKR
11-Jul-14	2-Jan-00	14:00	PH1	0	0	0	0	0	0	0	0	0	0	0-Jan-00	PKR
11-Jul-14	2-Jan-00	14:00	PH2	0	0	0	0	0	0	0	0	0	0	0-Jan-00	PKR
11-Jul-14	2-Jan-00	14:00	PH3	0	0	0	0	0	0	0	0	0	0	0-Jan-00	PKR
11-Jul-14	2-Jan-00	14:00	SW1	1	0	0	0	0	0	0	0	0	0	1-Jan-00	PKR
11-Jul-14	2-Jan-00	14:00	SW2	1	0	0	0	0	0	0	0	0	0	1-Jan-00	PKR
11-Jul-14	2-Jan-00	14:00	SW3	1	0	0	0	0	0	0	0	0	0	1-Jan-00	PKR
12-Jul-14	1-Jan-00	7:30	PHFB	0	8	0	0	0	0	0	0	0	16	24-Jan-00	PKR
12-Jul-14	1-Jan-00	7:30	SWFB	0	0	0	0	0	0	0	1	0	1	2-Jan-00	PKR
12-Jul-14	1-Jan-00	7:30	PH1	0	0	0	0	0	0	0	0	0	0	0-Jan-00	PKR
12-Jul-14	1-Jan-00	7:30	PH2	0	0	0	0	0	0	0	0	0	0	0-Jan-00	PKR
12-Jul-14	1-Jan-00	7:30	PH3	0	0	0	0	0	0	0	0	0	0	0-Jan-00	PKR
12-Jul-14	1-Jan-00	7:30	SW1	0	0	0	0	0	0	0	0	0	0	0-Jan-00	PKR
12-Jul-14	1-Jan-00	7:30	SW2	1	0	0	0	0	0	0	0	0	0	1-Jan-00	PKR
12-Jul-14	1-Jan-00	7:30	SW3	0	0	0	0	0	0	0	0	0	0	0-Jan-00	PKR
12-Jul-14	2-Jan-00	14:00	PHFB	0	5	0	0	0	0	0	0	0	0	5-Jan-00	PKR
12-Jul-14	2-Jan-00	14:00	SWFB	0	1	0	0	0	0	0	0	0	10	11-Jan-00	PKR
12-Jul-14	2-Jan-00	14:00	PH1	0	0	0	0	0	0	0	0	0	0	0-Jan-00	PKR
12-Jul-14	2-Jan-00	14:00	PH2	0	0	0	0	0	0	0	0	0	0	0-Jan-00	PKR
12-Jul-14	2-Jan-00	14:00	PH3	0	0	0	0	0	0	0	0	0	0	0-Jan-00	PKR
12-Jul-14	2-Jan-00	14:00	SW1	0	0	0	0	0	0	0	0	0	0	0-Jan-00	PKR
12-Jul-14	2-Jan-00	14:00	SW2	0	0	0	0	0	0	0	0	0	0	0-Jan-00	PKR
12-Jul-14	2-Jan-00	14:00	SW3	0	0	0	0	0	0	0	0	0	0	0-Jan-00	PKR

John Day Dam
Avian Zones 2013



John Day:

	Temp:	Secchi:	Fallbacks
Sun	65	4.0	181
Mon	65	4.0	251
Tues	67	4.0	247
Wed	66	5.0	217
Thur	67	5.0	223
Fri	68	5.0	196
Sat	68	5.0	221
AVG:	67	AVG: 4.6	AVG 219
			MAX 251
			MIN 181

	NE1	NE2	S.Ent	SE1	N.Ent	JBS Diff	Bay1	Bay19
Sun	8.8	8.8	1.4	8.8	1.5	4.6	1.6	1.4
Sun	8.6	8.6	1.3	9.1	1.4	4.5	1.4	1.2
Mon	8.1	8.1	1.4	8.1	1.5	4.6	1.8	1.7
Mon	8.8	8.8	1.5	8.9	1.5	4.6	1.6	1.5
Tues	8.0	8.0	1.3	8.2	1.7	4.6	1.8	1.5
Tues	8.4	8.4	1.3	8.9	1.5	4.6	1.5	1.5
Wed	8.5	8.5	1.4	8.6	1.7	4.6	1.8	1.6
Wed	8.3	8.3	1.5	9.0	1.4	4.5	1.7	1.7
Thur	8.5	8.5	1.3	8.6	1.5	4.5	1.4	1.5
Thur	8.6	8.6	1.5	9.4	1.4	4.6	1.4	1.4
Fri	8.0	8.0	1.5	8.3	1.6	4.6	1.8	1.5
Fri	8.6	8.5	1.4	8.8	1.4	4.5	1.6	1.4
Sat	8.0	8.0	1.4	8.0	1.5	4.6	1.8	1.6
Sat	8.2	8.2	1.3	8.7	1.4	4.6	1.6	1.5
AVG:	8.4	8.4	1.4	8.7	1.5	4.6	1.6	1.5