


# FISHWAY STATUS REPORT

**Date:** 8/11/2018  
**Inspection Period:** 8/5/2018 thru 8/11/2018



**US Army Corps  
of Engineers**  
Portland District

**JOHN DAY DAM**

JD/WC Project-Fisheries  
P.O. Box 823  
Rufus, Oregon 97050  
Phone: 541-506-7860

All JD Fishways are inspected twice per day during fish passage season, Mar. 1 - Nov. 30.  
Frequent monitoring of the PLC displays in SMF Fisheries Office as necessary.

John Day Dam	Inspections	Criteria	Total Number of Inspections: 14	Temperature: 73 F
	Out of Criteria	Limit		Secchi: 6.0 Ft.
<b>NORTH FISHWAY</b>			In service with all 6 AWS pumps total available.	
Exit differential	0	≤ 0.5'		
Exit Control weirs	0	High setting	High setting is normal for JDN	
Count station differential	0	≤ 0.3'		
Weir crest depth (DS gauge)	0	1.0' ± 0.1'	1.0' for salmon passage	
Entrance differential	0	1.0' - 2.0'	AVG 1.5	
<b>SOUTH FISHWAY</b>	0		In service with two AWS turbines and two FOGs.	
Exit differential	0	≤ 0.5'		
Exit Control weirs	0	Mid setting	Mid setting is normal for JDS	
Count station differential	0	≤ 0.3'		
Weir crest depth (US gauge)	0	1.0' ± 0.1'	1.0' for salmon passage	
South entrance differential	0	1.0' - 2.0'	AVG 1.4	
Entrance weir SE1	0	depth (≥ 8')	AVG 8.4	
Collection channel velocity	0	1.5 - 4 fps	AVG 2.53	
N. Entrance PH(Bay 19)differential	0	1.0' - 2.0'	AVG 1.7	
Entrance weir NE1	0	depth (≥ 8')	AVG 8.9	
Entrance weir NE2	0	depth (≥ 8')	AVG 8.9	
<b>JUVENILE PASSAGE</b>	0		In service since 2/28.	
Forebay/bypass conduit differential	0	4.0' - 5.0'	AVG 4.6	
Submersible traveling screens	0	visual inspect	August STS underwater camera inspection is scheduled for the week 8/20.	
Turbine trashrack drawdown	0	<1.5', wkly	Monthly trashracks raking is schedule for the week 8/27.	
Vert barrier screen drawdown	0	<1.5', wkly		
Spill volume	0	per FPP	Fall spill operations, 30 % - 24 hrs, since 7/20 per FOP.	
Spill pattern	0	per FPP	Two TSWs, bays 18 & 19 open since 4/10/18 AM.	
Turbine Unit Priority	0	per FPP		
Turbine 1% Efficiency	0	per FPP		

## SMOLT MONITORING FACILITY

**Operation:**

SMF continues the limited, twice a week, 6 hrs sampling since 7/23 when river temperature reached 70 F. It will return to regular sampling when temp drops < 69.5 F.

**Maintenance:**

SMF SCADA update/mods' investigation by JD Electrical/ Portland District Engineers is underway. Awaiting for \$ 170 K UFR to complete in FY18.

**Research:** None**Birds :**

White pelicans continue increasing on the island downstream of BRZ and inside of the BRZ reaching estimated 500 birds (!) See Avian Numbers tab for details. All 125 avian lines in place without any deficiencies. USDA boat hazing completed for 2018 passage season on 7/31.

**Operations:**

JD South Fishway in service, with two AWS turbines and two FOGs since 2/28/18. Awaiting special funding to overhaul turbines 1 & 2 ( \$ 3 million each.)

JD North Ladder in service since 12/21/17. 6 out of 6 AWS pumps available again since 4/18/18.

MU Gatewell Drawdowns: All MUs trashrack differentials are 1.5' or below according to twice a week inspections.

**Maintenance:**

JD South AWS turbine 1 is OOS, in poor condition and urgently awaiting its overhaul as soon as \$ 3 million becomes available (hopefully in a year or two ?)

Calibration: All gauges/ sensors are within the criteria of 0.3' .

**Research:**

JDS and JDN Adult PIT systems are in service and detecting PIT tags since 3/1/18.

Lamprey trapping at JD S Trap and JD N LPS by CRITFC/ Tribes underway. Good season overall with #s of lamprey low in the past two weeks.

WDFW NPM angling from JD PH Tailrace deck continues since 5/1. Slow at the moment, but great up to date catch of 2,853 NPM thru 8/12.

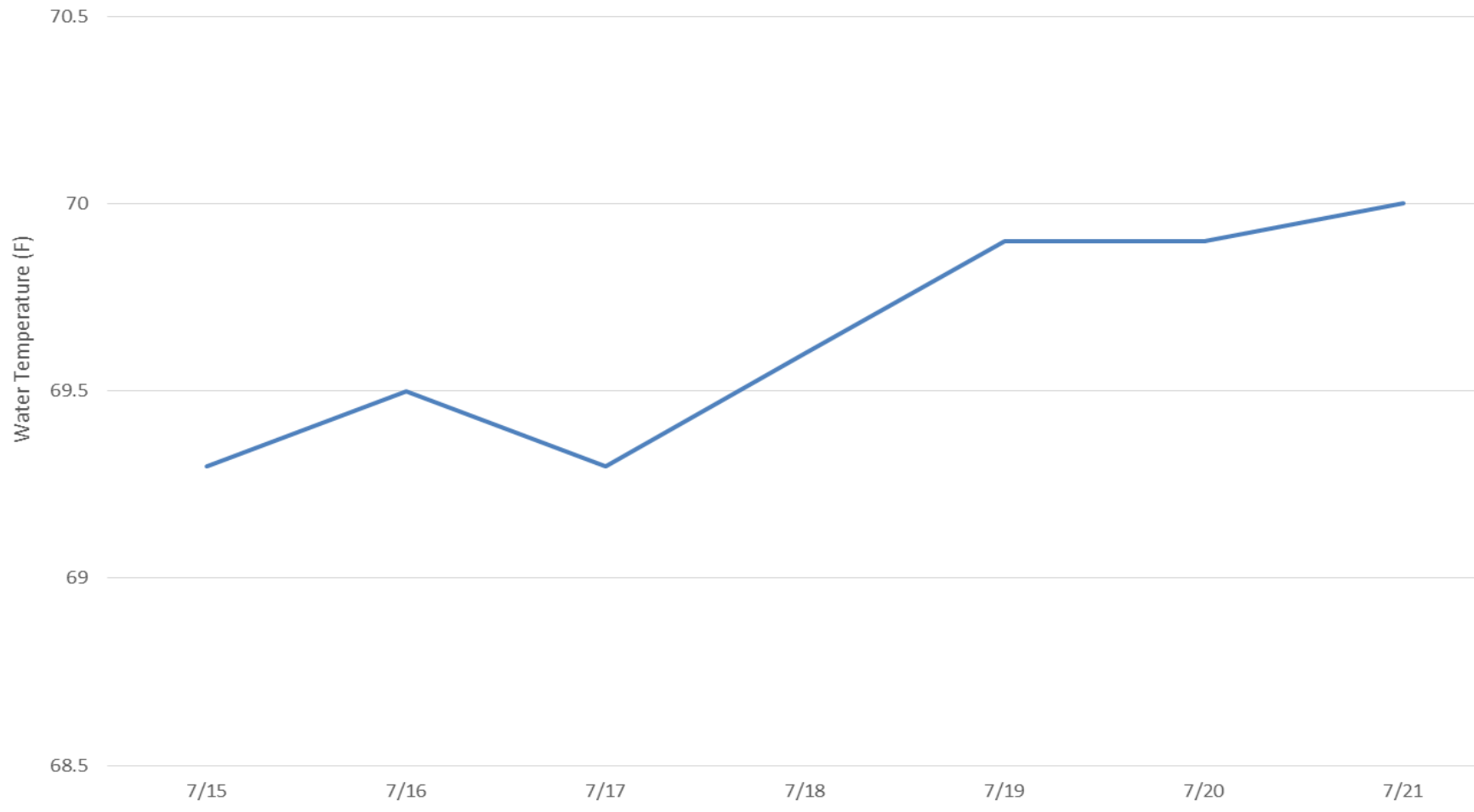
Uof I crew continues monitoring the RT Adult Lamprey passage at both JD Adult Fishways.

E-Signed by MOYNAHAN, KEVIN, PATRICK, 1393959157  
VERIFY authenticity with ApproveIt





JDA Tailwater Temperature (7/15/18 - 7/21/18)





## JDA Collection Channel Velocity

**Date**    *29-Jun-18*

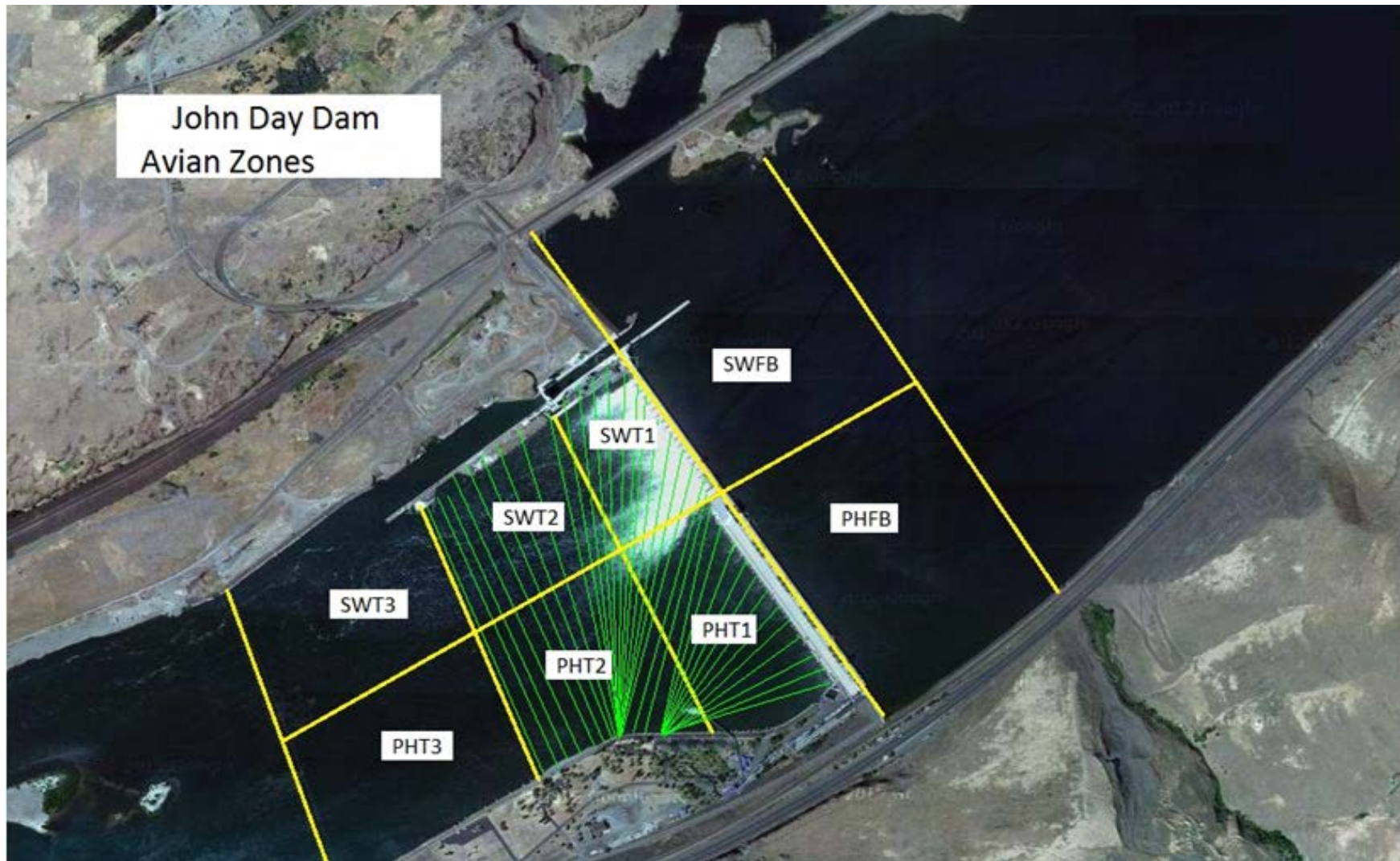
**By:**        *MDL*

<b>Bay(s)</b>	<b>Time</b>	<b>Sec.</b>	<b>Velocity (f/s)</b>
<i>0-2</i>	<i>1:09</i>	<i>69</i>	<i>2.61</i>
<i>2 - 4</i>	<i>2:16</i>	<i>136</i>	<i>2.69</i>
<i>4 - 6</i>	<i>3:32</i>	<i>212</i>	<i>2.37</i>
<i>6 - 8</i>	<i>4:51</i>	<i>291</i>	<i>2.28</i>
<i>8 - 10</i>	<i>6:15</i>	<i>375</i>	<i>2.14</i>
<i>10 - 12</i>	<i>7:24</i>	<i>444</i>	<i>2.61</i>
<i>12 - 14</i>	<i>8:35</i>	<i>515</i>	<i>2.54</i>
<i>14 - 16</i>	<i>9:44</i>	<i>584</i>	<i>2.61</i>
<i>16 - 18</i>	<i>10:46</i>	<i>646</i>	<i>2.90</i>
			<b>2.53</b>

Bay 19 TW:            161.7  
 turbine 2-3=68rpm

FPP Criteria        1.5–4.0 feet per second (2 fps optimum)

John Day Dam  
Avian Zones





## John Day Weekly Averages

	Temp:	Secchi:	Fallbacks
Sun	72	6.0	
Mon	72	6.0	13
Tue	73	6.0	
Wed	73	6.0	
Thur	73	6.0	9
Fri	73	6.0	
Sat	73	6.0	
<b>AVG:</b>	<b>73</b>	<b>AVG: 6.0</b>	<b>AVG/Sample 11</b>
			<b>MAX 13</b>
			<b>MIN 9</b>

	NE1	NE2	S.Ent	SE1	N.Ent	JBS Diff	Bay19
Sun	8.2	8.2	1.5	8.0	1.5	4.6	1.8
Sun	8.5	8.5	1.5	8.2	1.4	4.7	1.7
Mon	8.9	8.9	1.4	8.7	1.5	4.6	1.6
Mon	8.5	8.5	1.4	8.7	1.5	4.6	1.7
Tues	8.0	8.0	1.6	8.2	1.6	4.5	1.8
Tues	8.4	8.4	1.5	9.0	1.5	4.6	1.5
Wed	8.7	8.7	1.1	8.7	1.5	4.5	1.7
Wed	10.0	9.9	1.3	10.0	1.5	4.5	1.7
Thur	9.5	9.5	1.4	8.3	1.5	4.6	1.6
Thur	9.6	9.6	1.4	8.1	1.5	4.6	1.7
Fri	9.7	9.7	1.4	8.1	1.4	4.5	1.6
Fri	9.0	9.0	1.4	8.0	1.5	4.6	2.0
Sat	9.0	9.0	1.4	8.0	1.5	4.6	1.7
Sat	8.8	8.8	1.5	8.0	1.6	4.5	1.7
<b>AVG:</b>	<b>8.9</b>	<b>8.9</b>	<b>1.4</b>	<b>8.4</b>	<b>1.5</b>	<b>4.6</b>	<b>1.7</b>

**JDA Bird Counts: 8/5/18 to 8/11/18**

NF(1): Non-Forage AM Survey NF(2): Non-Forage PM Survey

Date	Zone	Gulls				Cormorant				Caspian tern				White Pelican				Grebe				Total
		F(1)	F(2)	NF(1)	NF(2)	F(1)	F(2)	NF(1)	NF(2)	F(1)	F(2)	NF(1)	NF(2)	F(1)	F(2)	NF(1)	NF(2)	F(1)	F(2)	NF(1)	NF(2)	
5-Aug	PHFB	0	0	0	6	0	0	8	0	0	0	0	0	0	0	0	0	0	0	5	5	24
5-Aug	SWFB	0	0	0	0	0	0	0	0	0	0	0	0	0	0	0	0	0	0	0	0	0
5-Aug	PH1	0	0	0	0	0	0	0	0	0	0	0	0	20	7	0	0	0	0	0	0	27
5-Aug	PH2	0	0	0	0	0	0	0	0	0	0	0	0	26	10	0	0	0	0	0	0	36
5-Aug	PH3	0	0	0	0	0	0	0	0	0	0	0	0	37	0	0	0	0	0	0	0	37
5-Aug	SW1	0	0	0	0	0	0	0	0	0	0	0	0	12	2	0	0	0	0	0	0	14
5-Aug	SW2	0	0	0	0	0	0	0	0	0	0	0	0	86	16	0	0	0	0	0	0	102
5-Aug	SW3	0	0	0	0	0	0	0	0	0	0	0	0	94	18	0	0	0	0	0	0	112
Avg/Survey		0		3		0		4		0		0		164		0		0		5		352
6-Aug	PHFB	0	0	0	0	0	0	6	0	0	0	0	0	0	0	0	0	0	0	0	0	6
6-Aug	SWFB	0	0	3	0	0	0	0	0	0	0	0	0	0	0	0	0	0	0	0	0	3
6-Aug	PH1	0	0	0	0	0	0	0	0	0	0	0	0	14	0	0	0	0	0	0	0	14
6-Aug	PH2	0	0	0	0	0	0	0	0	0	0	0	0	25	3	0	0	0	0	0	0	28
6-Aug	PH3	0	0	0	0	0	0	0	0	0	0	0	0	6	2	0	0	0	0	0	0	8
6-Aug	SW1	0	0	0	0	0	0	0	0	0	0	0	0	11	0	0	0	0	0	0	0	11
6-Aug	SW2	0	0	0	0	0	0	0	0	0	0	0	0	61	17	21	0	0	0	0	0	99
6-Aug	SW3	0	0	0	0	0	0	0	0	0	0	0	0	70	41	0	0	0	0	0	0	111
Avg/Survey		0		2		0		3		0		0		125		11		0		0		280
7-Aug	PHFB	0	0	29	0	0	0	0	0	0	0	0	0	0	0	0	0	0	0	0	0	29
7-Aug	SWFB	0	0	0	0	0	0	0	0	0	0	0	0	0	0	0	0	0	0	0	0	0
7-Aug	PH1	0	0	0	0	0	0	0	0	0	0	0	0	0	0	0	0	0	0	0	0	0
7-Aug	PH2	0	0	0	0	0	0	0	0	0	0	0	0	2	20	0	0	0	0	0	0	22
7-Aug	PH3	0	0	0	0	0	0	0	0	0	0	0	0	1	13	0	34	0	0	0	0	48
7-Aug	SW1	0	0	0	0	0	0	0	0	0	0	0	0	0	0	0	0	0	0	0	0	0
7-Aug	SW2	0	0	0	0	0	0	0	0	0	0	0	0	28	8	0	0	0	0	0	0	36
7-Aug	SW3	0	0	0	0	0	0	0	0	0	0	0	0	16	5	0	23	0	0	0	0	44
Avg/Survey		0		15		0		0		0		0		47		29		0		0		179
8-Aug	PHFB	0	0	3	46	0	0	7	7	0	0	0	0	0	0	0	0	5	0	0	0	68
8-Aug	SWFB	0	0	0	98	0	0	0	0	0	0	0	0	0	0	0	0	0	0	0	0	98
8-Aug	PH1	0	0	0	0	0	0	0	0	0	0	0	0	0	0	0	0	0	0	0	0	0
8-Aug	PH2	0	0	0	0	0	0	0	0	0	0	0	0	15	0	0	0	0	0	0	0	15
8-Aug	PH3	0	0	0	0	0	0	0	0	0	0	0	0	19	0	8	0	0	0	0	0	27
8-Aug	SW1	0	0	0	0	0	0	0	0	0	0	0	0	20	0	0	0	0	0	0	0	20
8-Aug	SW2	0	0	0	0	0	0	0	0	0	0	0	0	19	25	0	0	0	0	0	0	44
8-Aug	SW3	4	0	0	0	0	0	0	0	0	0	0	0	71	15	42	0	0	0	0	0	132
Avg/Survey		2		74		0		7		0		0		92		25		3		0		404

**JDA Bird Counts: 8/5/18 to 8/11/18**

NF(1): Non-Forage AM Survey    NF(2): Non-Forage PM Survey

Date	Zone	Gulls				Cormorant				Caspian tern				White Pelican				Grebe				Total
		F(1)	F(2)	NF(1)	NF(2)	F(1)	F(2)	NF(1)	NF(2)	F(1)	F(2)	NF(1)	NF(2)	F(1)	F(2)	NF(1)	NF(2)	F(1)	F(2)	NF(1)	NF(2)	
9-Aug	PHFB	0	0	4	0	0	0	0	0	0	0	0	0	0	0	0	0	8	0	7	0	19
9-Aug	SWFB	0	0	0	0	0	0	0	0	0	0	0	0	0	0	0	0	0	0	0	0	0
9-Aug	PH1	0	0	0	0	0	0	0	0	0	0	0	0	0	0	0	0	0	0	0	0	0
9-Aug	PH2	0	0	0	0	0	0	0	0	0	0	0	0	0	0	0	0	0	0	0	0	0
9-Aug	PH3	0	0	0	0	0	0	0	0	0	0	0	0	7	0	0	0	0	0	0	0	7
9-Aug	SW1	0	0	0	0	0	0	0	0	0	0	0	0	0	0	0	0	0	0	0	0	0
9-Aug	SW2	0	0	0	0	0	0	0	0	0	0	0	0	11	0	0	0	0	0	0	0	11
9-Aug	SW3	0	0	0	0	0	0	0	0	0	0	0	0	25	0	0	0	0	0	0	0	25
Avg/Survey		0		2		0		0		0		0		22		0		4		4		62
10-Aug	PHFB	0	0	0	0	0	0	0	0	0	0	0	0	0	0	0	0	0	0	0	0	0
10-Aug	SWFB	0	0	56	0	0	0	0	0	0	0	0	0	0	0	0	0	0	0	0	0	56
10-Aug	PH1	0	0	0	0	0	0	0	0	0	0	0	0	5	0	0	0	0	0	0	0	5
10-Aug	PH2	0	0	0	0	0	0	0	0	0	0	0	0	0	0	0	0	0	0	0	0	0
10-Aug	PH3	0	0	0	0	0	0	0	0	0	0	0	0	0	0	0	0	0	0	0	0	0
10-Aug	SW1	0	0	0	0	0	0	0	0	0	0	0	0	7	0	0	0	0	0	0	0	7
10-Aug	SW2	0	0	0	0	0	0	0	0	0	0	0	0	32	0	0	0	0	0	0	0	32
10-Aug	SW3	0	0	0	0	0	0	0	0	0	0	0	0	27	5	0	0	0	0	0	0	32
Avg/Survey		0		28		0		0		0		0		38		0		0		0		132
11-Aug	PHFB	0	0	0	0	0	0	0	0	0	0	0	0	0	0	0	0	0	1	0	1	2
11-Aug	SWFB	0	0	0	0	0	0	0	0	0	0	0	0	0	0	0	0	0	0	0	0	0
11-Aug	PH1	0	0	0	1	0	0	0	0	0	0	0	0	0	0	0	0	0	0	0	0	1
11-Aug	PH2	0	0	0	0	0	0	0	0	0	0	0	0	0	0	0	0	0	0	0	0	0
11-Aug	PH3	0	0	0	0	0	0	0	0	0	0	0	0	0	0	0	0	0	0	0	0	0
11-Aug	SW1	0	0	0	0	0	0	0	0	0	0	0	0	0	0	0	0	0	0	0	0	0
11-Aug	SW2	0	0	0	0	0	0	0	0	0	0	0	0	0	0	0	0	0	0	0	0	0
11-Aug	SW3	0	0	0	0	0	0	0	0	0	0	0	0	0	14	0	0	0	0	0	0	14
Avg/Survey		0		1		0		0		0		0		7		0		1		1		17
<b>Totals</b>		<b>Gulls</b>				<b>Cormorant</b>				<b>Caspian tern</b>				<b>White Pelican</b>				<b>Grebe</b>				<b>Total</b>
		F		NF		F		NF		F		NF		F		NF		F		NF		
<b>Weekly Total</b>		4		246		0		28		0		0		988		128		14		18		1426
<b>Avg/Survey</b>		0		18		0		2		0		0		71		9		1		1		102