

FISHWAY STATUS REPORT

Date: 6/23/2018
 Inspection Period: 6/17/2018 thru 6/23/2018



US Army Corps
 of Engineers
 Portland District

JOHN DAY DAM

JD/WC Project-Fisheries
 P.O. Box 823
 Rufus, Oregon 97050
 Phone: 541-506-7860

All JD Fishways are inspected twice per day during fish passage season, Mar. 1 - Nov. 30.
 Frequent monitoring of the PLC displays in SMF Fisheries Office as necessary.

John Day Dam	Inspections	Criteria	Total Number of Inspections:	14	Temperature:	59 F
	Out of Criteria	Limit			Secchi:	3.3 Ft.
NORTH FISHWAY			In service with all 6 AWS pumps total available.			
Exit differential	0	≤ 0.5'				
Exit Control weirs	0	High setting	High setting is normal for JDN			
Count station differential	0	≤ 0.3'				
Weir crest depth (DS gauge)	0	1.3' ± 0.1'	1.3' for shad passage since 5/24			
Entrance differential	0	1.0' - 2.0'	AVG	1.5		
SOUTH FISHWAY	0		In service with two AWS turbines and two FOGs.			
Exit differential	0	≤ 0.5'				
Exit Control weirs	0	Mid setting	Mid setting is normal for JDS			
Count station differential	0	≤ 0.3'				
Weir crest depth (US gauge)	0	1.3' ± 0.1'	1.3' for shad passage since 5/24			
South entrance differential	0	1.0' - 2.0'	AVG	1.3		
Entrance weir SE1	1	depth (≥ 8')	AVG	8.2	SE1 depth OOC at 7.7' Adjusted manually within minutes of occurrence on 6/19 AM.	
Collection channel velocity	0	1.5 - 4 fps	AVG	2.61		
N. Entrance PH(Bay 19)differential	0	1.0' - 2.0'	AVG	1.7		
Entrance weir NE1	0	depth (≥ 8')	AVG	11.1		
Entrance weir NE2	0	depth (≥ 8')	AVG	11.0		
JUVENILE PASSAGE	0		In service since 2/28.			
Forebay/bypass conduit differential	0	4.0' - 5.0'	AVG	4.6		
Submersible traveling screens	0	visual inspect	June STS inspection completed 6/18. One bad STS at MU1 replaced with working spare.			
Turbine trashrack drawdown	0	<1.5', wkly	Monthly trashracks raking is scheduled for the next week, 6/25.			
Vert barrier screen drawdown	0	<1.5', wkly				
Spill volume	0	per FPP	Summer spill operations started on 6/16 per FOP.			
Spill pattern	0	per FPP	Two TSWs, bays 18 & 19 open since 4/10/18 AM.			
Turbine Unit Priority	0	per FPP				
Turbine 1% Efficiency	0	per FPP				

SMOLT MONITORING FACILITY

Operation:

SMF was in every day/ 24 hrs sampling 5/26 - 6/4 due to special TDG operations monitoring. Regular, every other day sampling restarted on 6/5.

Maintenance:

SMF SCADA update/mods' investigation by JD Electrical/ Portland District Engineers is underway. Awaiting for \$ 170 K UFR to complete in FY18.

Research: None**Birds :**

White pelicans continue increasing on the island downstream of BRZ and inside of the BRZ. See Avian Numbers tab for details.

All 125 avian lines in place without any deficiencies. USDA boat hazing commenced on 4/16 and will continue 7 days a week thru 7/31.

Operations:

JD South Fishway in service, with two AWS turbines and two FOGs since 2/28/18. Awaiting special funding to overhaul turbines 1 & 2 (\$ 3 million each.)

JD North Ladder in service since 12/21/17. 6 out of 6 AWS pumps available again since 4/18/18.

SE1 depth OOC at 7.7' on 6/19 AM inspection. Due to JD South AWS turbines tripped by SS switching. JD OPS restarted turbines within minutes. JD Fisheries adjusted the SE1 weir over 8.0' immediately by hand, as well.

MU Gatewell Drawdowns: All MUs trashrack differentials are 1.5' or below according to twice a week inspections.

Maintenance:

JD South AWS turbine 1 is OOS, in poor condition and urgently awaiting its overhaul as soon as \$ 3 million becomes available (hopefully in a year or two ?)

Calibration: All gauges/ sensors are within the criteria of 0.3' .

Research:

JDS and JDN Adult PIT systems are in service and detecting PIT tags since 3/1/18.

An orientation meeting with CRITFC and Tribes for the upcoming adult lamprey collection occurred on 6/12. JD South Trap was deployed the same day.

JD Mechanical installed the JD North LPS water supply pumps by 6/1. LPS operations by FFU assisted by JD Fisheries to start soon.

JD North LPS was started up on 6/20 AM. It is monitored by JD Fisheries with CRITFC retaining all unmarked adult lamprey for the tribal replanting programs.

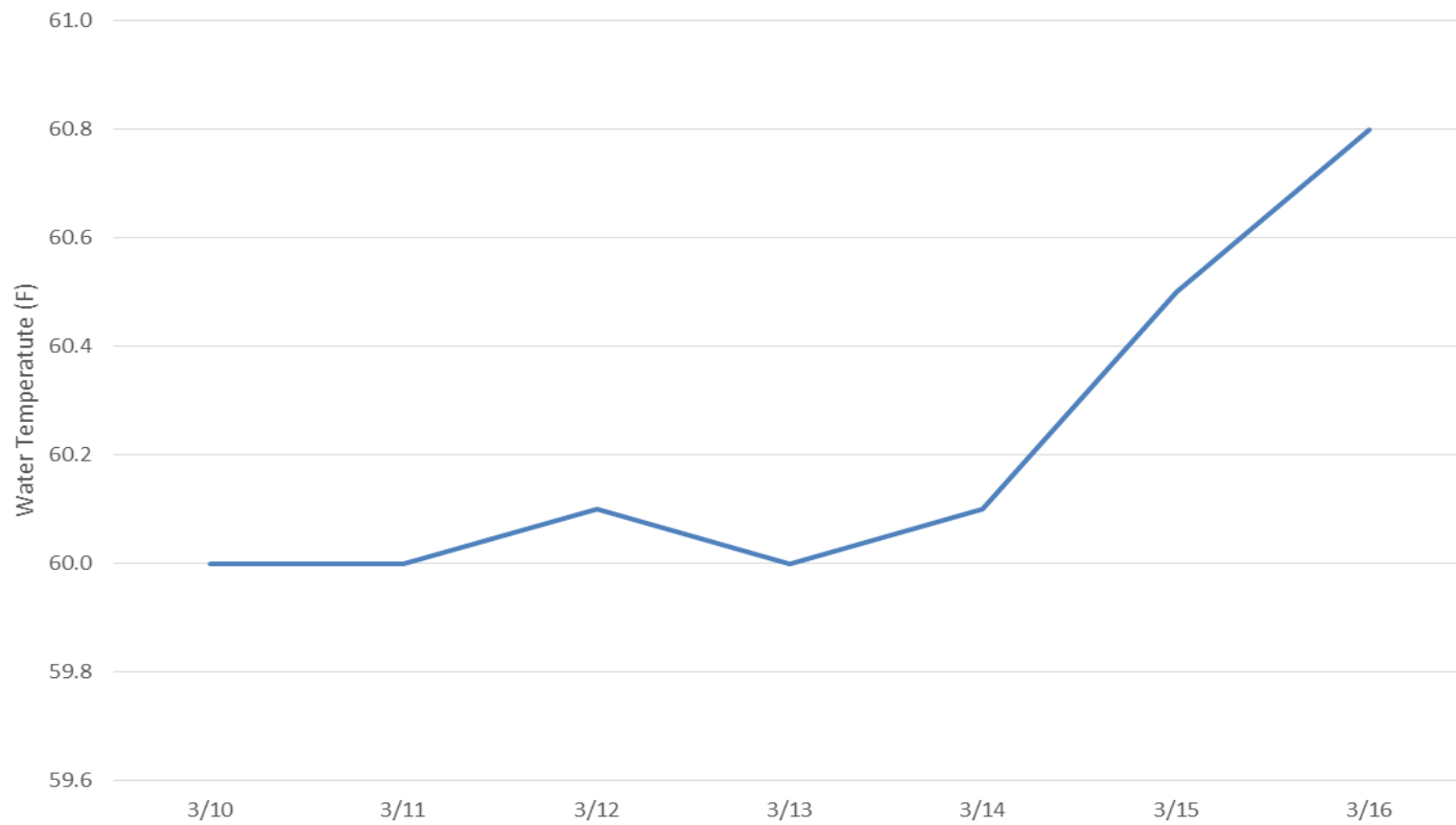
Catches were great over the weekend with first day, 6/21 at 30, and then the high of 86 fish caught on Saturday 6/23.

WDFW NPM angling from JD PH Tailrace deck continues since 5/1. Catches increased significantly in the past two weeks with 542 NPM caught thru 6/17.

Uof I crew continues monitoring the RT Adult Lamprey passage at both JD Adult Fishways.

MOYNAHAN.KEVIN.PATRICK.1393959157
E-Signed by MOYNAHAN.KEVIN.PATRICK.1393959157
VERIFY authenticity with ApproveIt

JDA Tailwater Temperature (F) 3/10/18 - 3/16/18



JDA Collection Channel Velocity

Date 15-Jun-18

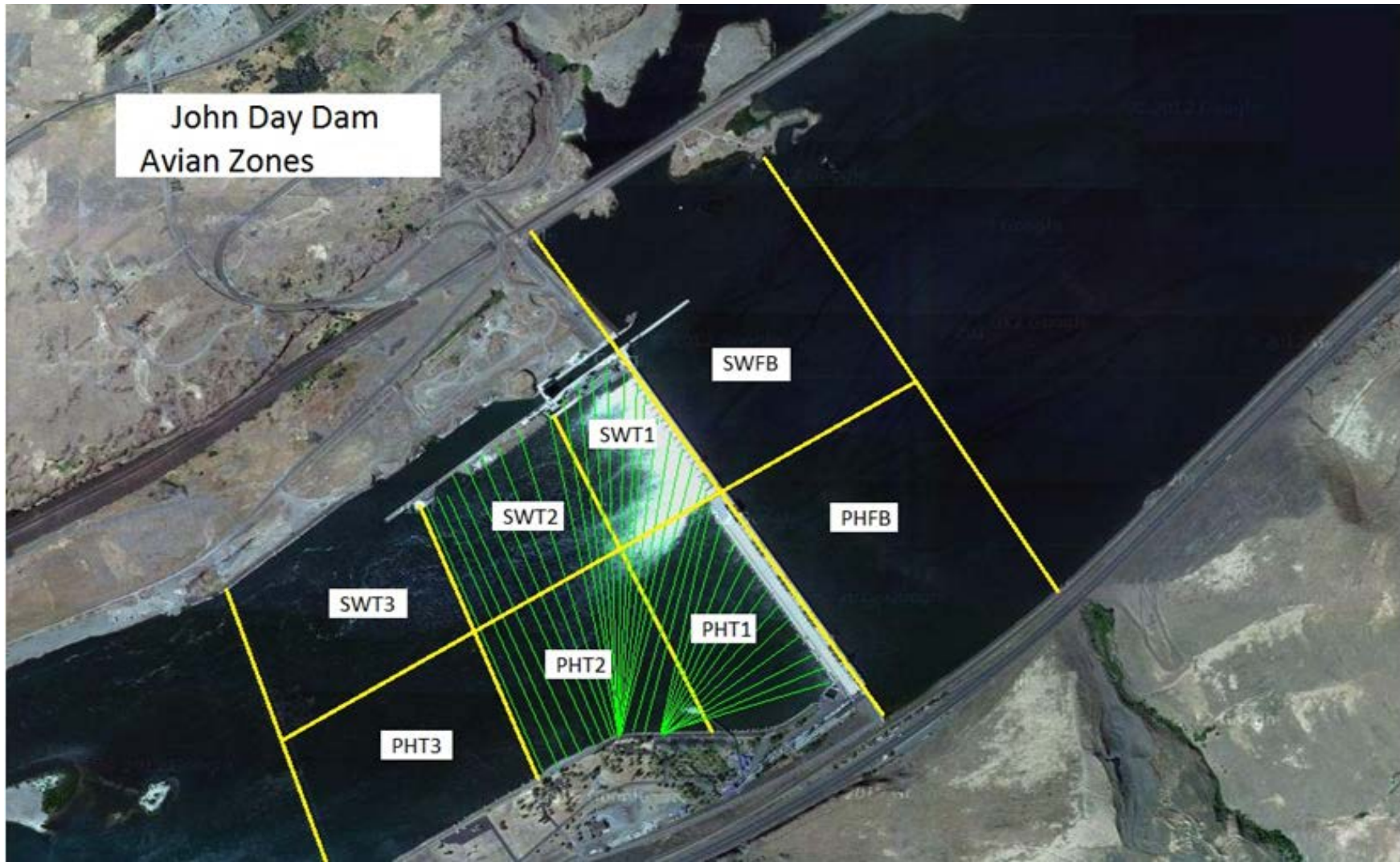
By: MDL

Bay(s)	Time	Sec.	Velocity (f/s)
0-2	1:09	69	2.61
2 - 4	2:19	139	2.57
4 - 6	3:25	205	2.73
6 - 8	4:37	277	2.50
8 - 10	5:49	349	2.50
10 - 12	6:58	418	2.61
12 - 14	8:17	497	2.28
14 - 16	9:25	565	2.65
16 - 18	10:24	624	3.05
			2.61

Bay 19 TW: 161.5
turbine 2-3=68rpm

FPP Criteria 1.5–4.0 feet per second (2 fps optimum)

John Day Dam
Avian Zones



John Day Weekly Averages

	Temp:	Secchi:	Fallbacks
Sun	61	5.0	205
Mon	62	5.0	
Tue	62	4.5	181
Wed	63	5.0	
Thur	63	5.0	161
Fri	64	5.0	
Sat	64	5.0	225
AVG:	63	AVG: 4.9	AVG/Sample 225
			MAX 225
			MIN 75

	NE1	NE2	S.Ent	SE1	N.Ent	JBS Diff	Bay19
Sun	9.0	9.0	1.5	8.0	1.1	4.5	1.8
Sun	8.4	8.4	1.5	8.0	1.5	4.6	1.8
Mon	10.4	10.4	1.3	8.0	1.5	4.6	1.6
Mon	10.7	10.7	1.4	8.0	1.5	4.6	1.7
Tues	10.5	10.5	1.4	7.7	1.4	4.5	1.5
Tues	10.2	10.2	1.4	8.4	1.4	4.6	1.4
Wed	10.0	10.0	1.4	8.1	1.5	4.5	1.7
Wed	11.2	11.2	1.4	8.3	1.5	4.6	1.6
Thur	9.2	9.2	1.4	8.0	1.7	4.6	1.8
Thur	11.0	11.0	1.4	8.0	1.5	4.5	1.5
Fri	9.5	9.5	1.5	8.0	1.6	4.5	1.0
Fri	10.5	10.5	1.3	8.0	1.5	4.5	1.6
Sat	10.5	10.5	1.3	9.0	1.5	4.5	1.5
Sat	10.5	10.5	1.4	8.3	1.6	4.6	1.5
AVG:	10.1	10.1	1.4	8.1	1.5	4.6	1.6

JDA Bird Counts: 6/17/18 to 6/23/18

NF(1): Non-Forage AM Survey NF(2): Non-Forage PM Survey

Date	Zone	Gulls				Cormorant				Caspian tern				White Pelican				Grebe				Total
		F(1)	F(2)	NF(1)	NF(2)	F(1)	F(2)	NF(1)	NF(2)	F(1)	F(2)	NF(1)	NF(2)	F(1)	F(2)	NF(1)	NF(2)	F(1)	F(2)	NF(1)	NF(2)	
17-Jun	PHFB	0	2	0	0	0	0	0	1	0	0	0	0	0	0	7	0	21	8	0	0	39
17-Jun	SWFB	0	0	0	2	0	0	0	0	0	0	0	0	0	0	0	0	0	0	0	0	2
17-Jun	PH1	0	0	0	0	0	0	0	0	0	0	0	0	0	0	0	0	0	0	0	0	0
17-Jun	PH2	6	2	0	0	0	0	0	0	0	0	0	0	28	17	0	0	0	0	0	0	53
17-Jun	PH3	0	0	0	0	0	0	0	0	0	0	0	0	10	12	0	0	0	0	0	0	22
17-Jun	SW1	0	0	0	0	0	0	0	0	0	0	0	0	0	0	0	0	0	0	0	0	0
17-Jun	SW2	0	0	0	0	0	0	0	0	0	0	0	0	16	0	0	0	0	0	0	0	16
17-Jun	SW3	0	4	0	0	0	0	0	0	0	0	0	0	17	0	0	0	0	0	0	0	21
Avg/Survey		7		1		0		1		0		0		50		4		15		0		153
18-Jun	PHFB	1	2	0	0	0	0	0	0	0	0	0	0	0	0	2	0	20	20	0	0	45
18-Jun	SWFB	0	0	0	0	0	0	0	0	0	0	0	0	0	0	0	0	0	0	0	0	0
18-Jun	PH1	0	0	0	0	0	0	0	0	0	0	0	0	0	0	0	0	0	0	0	0	0
18-Jun	PH2	0	0	0	0	0	0	0	0	0	0	0	0	20	14	0	0	0	0	0	0	34
18-Jun	PH3	0	0	0	0	0	0	0	0	0	0	0	0	1	0	0	0	0	0	0	0	1
18-Jun	SW1	0	0	0	0	0	0	0	0	0	0	0	0	0	0	0	0	0	0	0	0	0
18-Jun	SW2	0	0	0	0	0	0	0	0	0	0	0	0	1	0	0	0	0	0	0	0	1
18-Jun	SW3	0	0	0	0	0	0	0	0	0	0	0	0	7	0	0	0	0	0	0	0	7
Avg/Survey		2		0		0		0		0		0		22		1		20		0		88
19-Jun	PHFB	0	0	2	10	0	0	0	0	0	0	0	0	0	0	0	0	25	4	0	0	41
19-Jun	SWFB	0	0	0	0	0	0	0	0	0	0	0	0	0	0	0	0	0	0	0	0	0
19-Jun	PH1	0	0	0	0	0	0	0	0	0	0	0	0	0	14	0	0	0	0	0	0	14
19-Jun	PH2	1	0	0	0	0	0	0	0	0	0	0	0	9	10	0	0	0	0	0	0	20
19-Jun	PH3	0	0	0	0	0	0	0	0	0	0	0	0	3	3	0	0	0	0	0	0	6
19-Jun	SW1	0	0	0	0	0	0	0	0	0	0	0	0	0	0	0	0	0	0	0	0	0
19-Jun	SW2	0	0	0	0	0	0	0	0	0	0	0	0	16	0	0	0	0	0	0	0	16
19-Jun	SW3	0	0	0	0	0	0	0	0	0	0	0	0	0	8	0	0	0	0	0	0	8
Avg/Survey		1		6		0		0		0		0		32		0		15		0		105
20-Jun	PHFB	0	0	0	0	0	0	0	0	0	0	0	0	0	0	0	0	21	27	0	0	48
20-Jun	SWFB	0	0	0	0	0	0	0	0	0	0	0	0	0	0	0	0	0	0	0	0	0
20-Jun	PH1	0	0	0	0	0	0	0	0	0	0	0	0	0	0	0	0	0	0	0	0	0
20-Jun	PH2	0	0	0	0	0	0	0	0	0	0	0	0	0	0	0	0	0	0	0	0	0
20-Jun	PH3	0	0	0	0	0	0	0	0	0	0	0	0	4	3	0	0	0	0	0	0	7
20-Jun	SW1	0	0	0	0	0	0	0	0	0	0	0	0	45	28	0	0	0	0	0	0	73
20-Jun	SW2	0	0	0	0	0	0	0	0	0	0	0	0	2	0	0	0	0	0	0	0	2
20-Jun	SW3	0	0	0	0	0	0	0	0	0	0	0	0	0	4	0	0	0	0	0	0	4
Avg/Survey		0		0		0		0		0		0		43		0		24		0		134

JDA Bird Counts: 6/17/18 to 6/23/18

NF(1): Non-Forage AM Survey NF(2): Non-Forage PM Survey

Date	Zone	Gulls				Cormorant				Caspian tern				White Pelican				Grebe				Total
		F(1)	F(2)	NF(1)	NF(2)	F(1)	F(2)	NF(1)	NF(2)	F(1)	F(2)	NF(1)	NF(2)	F(1)	F(2)	NF(1)	NF(2)	F(1)	F(2)	NF(1)	NF(2)	
21-Jun	PHFB	0	0	0	0	0	0	0	0	0	0	0	0	1	0	0	0	20	0	0	0	21
21-Jun	SWFB	0	0	0	0	0	0	0	0	0	0	0	0	0	0	0	0	0	0	0	0	0
21-Jun	PH1	0	0	0	0	0	0	0	0	0	0	0	0	0	0	0	0	0	0	0	0	0
21-Jun	PH2	0	0	0	0	0	0	0	0	0	0	0	0	4	0	0	0	0	0	0	0	4
21-Jun	PH3	0	0	0	0	0	0	0	0	0	0	0	0	10	0	0	0	0	0	0	0	10
21-Jun	SW1	0	0	0	0	0	0	0	0	0	0	0	0	48	0	0	0	0	0	0	0	48
21-Jun	SW2	0	0	0	0	0	0	0	0	0	0	0	0	6	0	0	0	0	0	0	0	6
21-Jun	SW3	0	0	0	0	0	0	0	0	0	0	0	0	8	0	0	0	0	0	0	0	8
Avg/Survey		0	0	0	0	0	0	0	0	0	0	0	0	39	0	0	0	10	0	0	0	97
22-Jun	PHFB	0	0	0	0	0	0	0	0	0	0	0	0	1	0	0	0	22	20	0	0	43
22-Jun	SWFB	0	0	0	0	0	0	0	0	0	0	0	0	0	0	0	0	0	0	0	0	0
22-Jun	PH1	0	0	0	0	0	0	0	0	0	0	0	0	6	0	0	0	0	0	0	0	6
22-Jun	PH2	0	0	0	0	0	0	0	0	0	0	0	0	3	0	0	0	0	0	0	0	3
22-Jun	PH3	0	0	0	0	0	0	0	0	0	0	0	0	0	0	0	0	0	0	0	0	0
22-Jun	SW1	7	1	0	0	0	0	0	0	0	0	0	0	54	3	0	0	0	0	0	0	65
22-Jun	SW2	0	0	0	0	0	0	0	0	0	0	0	0	22	0	0	0	0	0	0	0	22
22-Jun	SW3	0	0	0	0	0	0	0	0	0	0	0	0	9	0	0	0	0	0	0	0	9
Avg/Survey		4	0	0	0	0	0	0	0	0	0	0	0	49	0	0	0	21	0	0	0	148
23-Jun	PHFB	2	0	0	0	0	0	0	0	0	0	0	0	0	0	0	0	20	20	0	0	42
23-Jun	SWFB	0	0	0	0	0	0	0	0	0	0	0	0	0	0	0	0	0	0	0	0	0
23-Jun	PH1	0	0	0	0	0	0	0	0	0	0	0	0	0	0	0	0	0	0	0	0	0
23-Jun	PH2	0	0	0	0	0	0	0	0	0	0	0	0	1	0	0	0	0	0	0	0	1
23-Jun	PH3	0	0	0	0	0	0	0	0	0	0	0	0	2	12	0	0	0	0	0	0	14
23-Jun	SW1	4	0	0	0	0	0	0	0	0	0	0	0	27	4	0	0	0	0	0	0	35
23-Jun	SW2	0	0	0	0	0	0	0	0	0	0	0	0	12	0	0	0	0	0	0	0	12
23-Jun	SW3	3	2	0	0	0	0	0	0	0	0	0	0	8	0	0	0	0	0	0	0	13
Avg/Survey		6	0	0	0	0	0	0	0	0	0	0	0	33	0	0	0	20	0	0	0	117
Totals		Gulls				Cormorant				Caspian tern				White Pelican				Grebe				Total
		F	NF	F	NF	F	NF	F	NF	F	NF	F	NF	F	NF	F	NF	F	NF	F	NF	
Weekly Total		37	14	0	1	0	1	0	0	0	0	533	9	248	0	842						
Avg/Survey		3	1	0	0	0	0	0	0	0	0	38	1	18	0	60						