

FISHWAY STATUS REPORT

Date: 6/16/2018
 Inspection Period: 6/10/2018 thru 6/16/2018



US Army Corps
 of Engineers
 Portland District

JOHN DAY DAM

JD/WC Project-Fisheries
 P.O. Box 823
 Rufus, Oregon 97050
 Phone: 541-506-7860

All JD Fishways are inspected twice per day during fish passage season, Mar. 1 - Nov. 30.
 Frequent monitoring of the PLC displays in SMF Fisheries Office as necessary.

John Day Dam	Inspections	Criteria	Total Number of Inspections:	14	Temperature:	59 F
	Out of Criteria	Limit			Secchi:	3.3 Ft.
NORTH FISHWAY			In service with all 6 AWS pumps total available.			
Exit differential	0	≤ 0.5'				
Exit Control weirs	0	High setting	High setting is normal for JDN			
Count station differential	0	≤ 0.3'				
Weir crest depth (DS gauge)	0	1.3' ± 0.1'	1.3' for shad passage since 5/24			
Entrance differential	0	1.0' - 2.0'	AVG	1.5		
SOUTH FISHWAY	0		In service with two AWS turbines and two FOGs.			
Exit differential	0	≤ 0.5'				
Exit Control weirs	0	Mid setting	Mid setting is normal for JDS			
Count station differential	0	≤ 0.3'				
Weir crest depth (US gauge)	0	1.3' ± 0.1'	1.3' for shad passage since 5/24			
South entrance differential	0	1.0' - 2.0'	AVG	1.3		
Entrance weir SE1	0	depth (≥ 8')	AVG	8.2		
Collection channel velocity	0	1.5 - 4 fps	AVG	2.61		
N. Entrance PH(Bay 19)differential	0	1.0' - 2.0'	AVG	1.7		
Entrance weir NE1	0	depth (≥ 8')	AVG	11.1		
Entrance weir NE2	0	depth (≥ 8')	AVG	11.0		
JUVENILE PASSAGE	0		In service since 2/28.			
Forebay/bypass conduit differential	0	4.0' - 5.0'	AVG	4.6		
Submersible traveling screens	0	visual inspect	Monthly STS camera inspection scheduled for week of 6/18.			
Turbine trashrack drawdown	0	<1.5', wkly				
Vert barrier screen drawdown	0	<1.5', wkly				
Spill volume	0	per FPP	Summer spill operations started on 6/16 per FOP.			
Spill pattern	0	per FPP	Two TSWs, bays 18 & 19 open since 4/10/18 AM.			
Turbine Unit Priority	0	per FPP				
Turbine 1% Efficiency	0	per FPP				

SMOLT MONITORING FACILITY

Operation:

SMF was in every day/ 24 hrs sampling 5/26 - 6/4 due to special TDG operations monitoring. Regular, every other day sampling restarted on 6/5.

Maintenance:

SMF SCADA update/mods' investigation by JD Electrical/ Portland District Engineers is underway. Awaiting for \$ 170 K UFR to complete in FY18.

Research: None

Birds :

White pelicans continue increasing on the island downstream of BRZ and inside of the BRZ. See Avian Numbers tab for details.

All 125 avian lines in place without any deficiencies. USDA boat hazing commenced on 4/16 and will continue 7 days a week thru 7/31.

Operations:

JD South Fishway in service, with two AWS turbines and two FOGs since 2/28/18. Awaiting special funding to overhaul turbines 1 & 2 (\$ 3 million each.)

JD North Ladder in service since 12/21/17. 6 out of 6 AWS pumps available again since 4/18/18.

MU Gatewell Drawdowns: All MUs trashrack differentials are 1.5' or below according to twice a week inspections.

Maintenance:

JD South AWS turbine 1 is OOS, in poor condition and urgently awaiting its overhaul as soon as \$ 3 million becomes available (hopefully in a year or two ?)

Calibration: All gauges/ sensors are within the criteria of 0.3' .

Research:

JDS and JDN Adult PIT systems are in service and detecting PIT tags since 3/1/18.

An orientation meeting with CRITFC and Tribes for the upcoming adult lamprey collection occurred on 6/12. JD South Trap was deployed the same day.

JD Mechanical installed the JD North LPS water supply pumps by 6/1. LPS operations by FFU assisted by JD Fisheries to start soon.

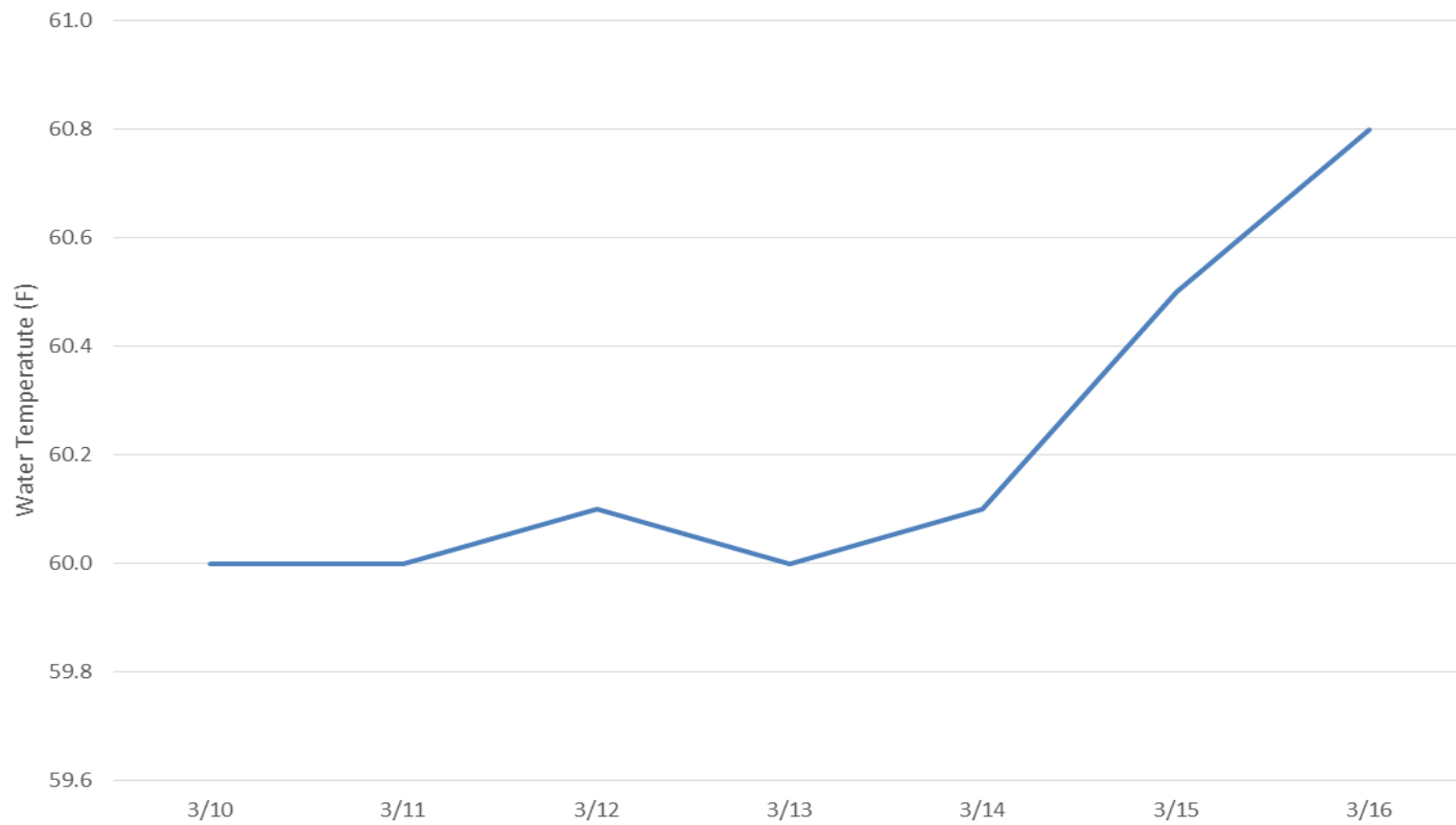
WDFW NPM angling from JD PH Tailrace deck continues since 5/1. Catches increased significantly the past week with 444 NPM caught thru 6/10.

Uof I crew continues monitoring the RT Adult Lamprey passage at both JD Adult Fishways.

E-Signed by MOYNAHAN, KEVIN, PATRICK, 1393959157
VERIFY authenticity with ApproveIt

MOYNAHAN, KEVIN, PATRICK, 1393959157

JDA Tailwater Temperature (F) 3/10/18 - 3/16/18



JDA Collection Channel Velocity

Date 15-Jun-18

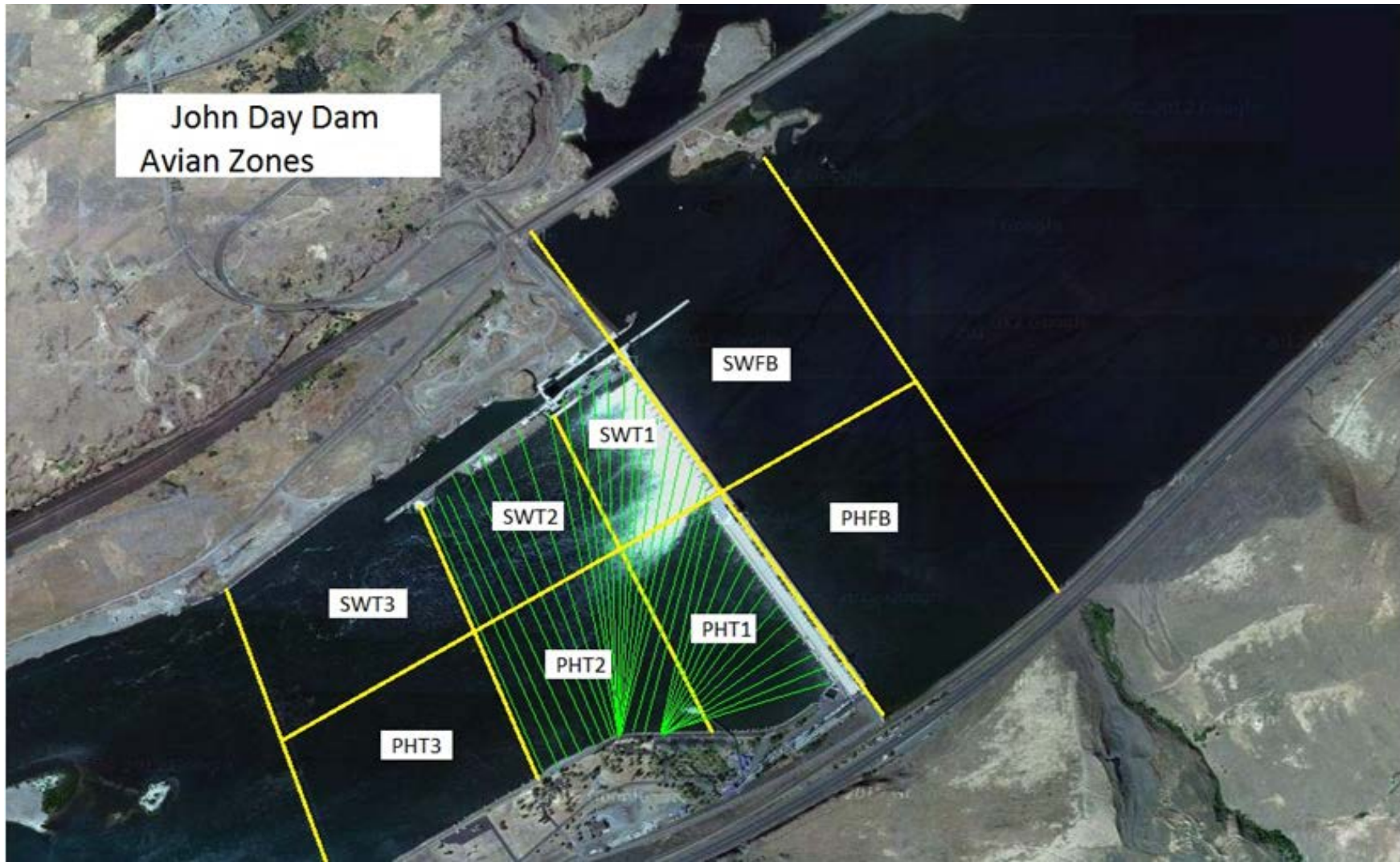
By: MDL

Bay(s)	Time	Sec.	Velocity (f/s)
0-2	1:09	69	2.61
2 - 4	2:19	139	2.57
4 - 6	3:25	205	2.73
6 - 8	4:37	277	2.50
8 - 10	5:49	349	2.50
10 - 12	6:58	418	2.61
12 - 14	8:17	497	2.28
14 - 16	9:25	565	2.65
16 - 18	10:24	624	3.05
			2.61

Bay 19 TW: 161.5
turbine 2-3=68rpm

FPP Criteria 1.5–4.0 feet per second (2 fps optimum)

John Day Dam
Avian Zones



John Day Weekly Averages

	Temp:	Secchi:	Fallbacks
Sun	60	3.0	
Mon	60	3.5	75
Tue	60	4.0	
Wed	60	4.5	124
Thur	60	4.5	
Fri	60	5.0	120
Sat	61	5.0	
AVG:	60	AVG: 4.2	AVG/Sample 106
			MAX 124
			MIN 75

	NE1	NE2	S.Ent	SE1	N.Ent	JBS Diff	Bay19
Sun	10.8	10.8	1.3	8.0	1.4	4.5	1.5
Sun	11.0	11.0	1.4	8.1	1.4	4.5	1.6
Mon	11.1	11.1	1.4	8.1	1.4	4.5	1.6
Mon	11.0	11.0	1.4	8.1	1.5	4.5	1.4
Tues	11.1	11.1	1.4	8.3	1.6	4.6	1.6
Tues	11.2	11.2	1.4	8.2	1.5	4.6	1.7
Wed	9.5	9.5	1.3	8.0	1.1	4.5	1.6
Wed	9.7	9.7	1.3	8.2	1.4	4.4	1.5
Thur	9.1	9.1	1.6	7.7	1.4	4.6	1.5
Thur	9.1	9.1	1.6	8.6	1.5	4.6	1.8
Fri	9.5	9.5	1.5	8.6	1.4	4.6	1.8
Fri	10.3	10.3	1.3	8.0	1.5	4.6	1.4
Sat	9.2	9.2	1.4	8.1	1.6	4.5	1.8
Sat	9.4	9.4	1.2	8.2	1.6	4.6	1.5
AVG:	10.1	10.1	1.4	8.2	1.5	4.5	1.6

JDA Bird Counts: 6/10/18 to 6/16/18

NF(1): Non-Forage AM Survey NF(2): Non-Forage PM Survey

Date	Zone	Gulls				Cormorant				Caspian tern				White Pelican				Grebe				Total	
		F(1)	F(2)	NF(1)	NF(2)	F(1)	F(2)	NF(1)	NF(2)	F(1)	F(2)	NF(1)	NF(2)	F(1)	F(2)	NF(1)	NF(2)	F(1)	F(2)	NF(1)	NF(2)		
10-Jun	PHFB	0	0	0	0	0	0	0	0	0	0	0	0	0	0	0	0	42	40	0	0	82	
10-Jun	SWFB	0	0	0	0	0	0	0	0	0	0	0	0	0	0	0	0	0	0	0	0		0
10-Jun	PH1	0	0	0	0	0	0	0	0	0	0	0	0	0	0	0	0	0	0	0	0		0
10-Jun	PH2	0	0	0	0	0	0	0	0	0	0	0	0	0	0	0	0	0	0	0	0		0
10-Jun	PH3	0	2	0	0	0	0	0	0	0	0	0	0	11	0	0	0	0	0	0	0		13
10-Jun	SW1	10	8	0	0	0	0	0	0	0	0	0	0	0	4	0	0	0	0	0	0		22
10-Jun	SW2	0	0	0	0	0	0	0	0	0	0	0	0	0	0	0	0	0	0	0	0		0
10-Jun	SW3	3	0	0	0	0	0	0	0	0	0	0	0	9	2	0	0	0	0	0	0		14
Avg/Survey		12	0	0	0	0	0	0	0	0	0	0	13	0	41	0					131		
11-Jun	PHFB	0	0	0	0	0	0	0	0	0	0	0	0	4	0	0	0	39	37	0	0	80	
11-Jun	SWFB	0	0	0	0	0	0	0	0	0	0	0	0	0	0	0	0	0	0	0	0		0
11-Jun	PH1	0	0	0	0	0	0	0	0	0	0	0	0	0	0	0	0	0	0	0	0		0
11-Jun	PH2	0	0	0	0	0	0	0	0	0	0	0	0	0	0	0	0	0	0	0	0		0
11-Jun	PH3	0	0	0	0	0	0	0	0	0	0	0	0	4	10	0	0	0	0	0	0		14
11-Jun	SW1	10	8	0	0	0	0	0	0	0	0	0	0	0	4	0	0	0	0	0	0		22
11-Jun	SW2	0	0	0	0	0	0	0	0	0	0	0	0	2	0	0	0	0	0	0	0		2
11-Jun	SW3	6	3	0	0	0	0	0	0	0	0	0	0	8	7	0	0	0	0	0	0		24
Avg/Survey		14	0	0	0	0	0	0	0	0	0	0	20	0	38	0					142		
12-Jun	PHFB	0	0	0	0	0	0	0	0	0	0	0	0	0	0	0	0	40	20	0	16	76	
12-Jun	SWFB	0	0	0	0	0	0	0	0	0	0	0	0	0	0	0	0	0	0	0	0		0
12-Jun	PH1	0	0	0	0	0	0	0	0	0	0	0	0	0	9	0	0	0	0	0	0		9
12-Jun	PH2	0	0	0	0	0	0	0	0	0	0	0	0	0	4	0	0	0	0	0	0		4
12-Jun	PH3	0	0	0	0	0	0	0	0	0	0	0	0	9	1	0	0	0	0	0	0		10
12-Jun	SW1	8	0	0	0	0	0	0	0	0	0	0	0	8	0	0	0	0	0	0	0		16
12-Jun	SW2	0	0	0	0	0	0	0	0	0	0	0	0	0	0	0	0	0	0	0	0		0
12-Jun	SW3	2	0	0	0	0	0	0	0	0	0	0	0	6	4	0	0	0	0	0	0		12
Avg/Survey		5	0	0	0	0	0	0	0	0	0	0	21	0	30	8					127		
13-Jun	PHFB	0	0	1	0	0	0	0	0	0	0	0	0	0	0	0	0	35	28	0	0	64	
13-Jun	SWFB	0	0	0	0	0	0	0	0	0	0	0	0	0	0	2	0	0	0	0	0		2
13-Jun	PH1	0	2	0	0	0	0	0	0	0	0	0	0	1	0	0	2	0	0	0	0		5
13-Jun	PH2	0	0	0	0	0	0	0	0	0	0	0	0	11	0	0	0	0	0	0	0		11
13-Jun	PH3	0	0	0	0	0	0	0	0	0	0	0	0	1	0	0	0	0	0	0	0		1
13-Jun	SW1	0	0	0	0	0	0	0	0	0	0	0	0	0	0	6	0	0	0	0	0		6
13-Jun	SW2	12	0	0	0	0	0	0	0	0	0	0	0	5	0	0	0	0	0	0	0		17
13-Jun	SW3	0	0	0	0	0	0	0	0	0	0	0	0	1	0	0	0	0	0	0	0		1
Avg/Survey		7	1	0	0	0	0	0	0	0	0	0	10	5	32	0					107		

JDA Bird Counts: 6/10/18 to 6/16/18

NF(1): Non-Forage AM Survey NF(2): Non-Forage PM Survey

Date	Zone	Gulls				Cormorant				Caspian tern				White Pelican				Grebe				Total
		F(1)	F(2)	NF(1)	NF(2)	F(1)	F(2)	NF(1)	NF(2)	F(1)	F(2)	NF(1)	NF(2)	F(1)	F(2)	NF(1)	NF(2)	F(1)	F(2)	NF(1)	NF(2)	
14-Jun	PHFB	1	0	0	0	0	0	0	0	0	0	0	0	0	0	0	0	30	23	0	0	54
14-Jun	SWFB	0	0	0	0	0	0	0	0	0	0	0	0	0	0	2	0	0	0	0	0	2
14-Jun	PH1	7	0	0	0	0	0	0	0	0	0	0	0	2	0	0	0	0	0	0	0	9
14-Jun	PH2	0	2	0	0	0	0	0	0	0	0	0	0	14	28	0	0	0	0	0	0	44
14-Jun	PH3	0	0	0	0	0	0	0	0	0	0	0	0	7	0	0	3	0	0	0	0	10
14-Jun	SW1	0	0	0	0	0	0	0	0	0	0	0	0	0	0	0	0	0	0	0	0	0
14-Jun	SW2	0	0	0	0	0	0	0	0	0	0	0	0	7	0	0	0	0	0	0	0	7
14-Jun	SW3	0	0	0	0	0	0	0	0	0	0	0	0	0	0	2	1	0	0	0	0	3
Avg/Survey		5		0		0		0		0		0		29		4		27		0		129
15-Jun	PHFB	0	0	1	16	0	0	0	0	0	0	0	0	0	0	1	0	25	30	0	0	73
15-Jun	SWFB	0	0	0	0	0	0	0	0	0	0	0	0	0	0	0	0	0	0	0	0	0
15-Jun	PH1	0	0	0	0	0	0	0	0	0	0	0	0	0	0	0	0	0	0	0	0	0
15-Jun	PH2	3	0	0	0	0	0	0	0	0	0	0	0	22	7	0	0	0	0	0	0	32
15-Jun	PH3	0	0	0	0	0	0	0	0	0	0	0	0	24	0	0	0	0	0	0	0	24
15-Jun	SW1	0	0	0	0	0	0	0	0	0	0	0	0	0	0	0	0	0	0	0	0	0
15-Jun	SW2	0	0	0	0	0	0	0	0	0	0	0	0	4	0	0	0	0	0	0	0	4
15-Jun	SW3	0	0	0	0	0	0	0	0	0	0	0	0	13	0	0	3	0	0	0	0	16
Avg/Survey		2		9		0		0		0		0		35		2		28		0		149
16-Jun	PHFB	0	0	0	0	0	0	0	0	0	0	0	0	0	0	0	0	17	16	0	0	33
16-Jun	SWFB	0	0	0	0	0	0	0	0	0	0	0	0	0	0	4	0	0	0	0	0	4
16-Jun	PH1	0	0	0	0	0	0	0	0	0	0	0	0	0	0	0	0	0	0	0	0	0
16-Jun	PH2	0	0	0	0	0	0	0	0	0	0	0	0	21	7	0	0	0	0	0	0	28
16-Jun	PH3	0	0	0	0	0	0	0	0	0	0	0	0	12	3	0	0	0	0	0	0	15
16-Jun	SW1	0	0	0	0	0	0	0	0	0	0	0	0	0	0	0	0	0	0	0	0	0
16-Jun	SW2	0	0	0	0	0	0	0	0	0	0	0	0	2	3	12	0	0	0	0	0	17
16-Jun	SW3	0	0	0	0	0	0	0	0	0	0	0	0	3	2	0	0	0	0	0	0	5
Avg/Survey		0		0		0		0		0		0		27		8		17		0		102
Totals		Gulls				Cormorant				Caspian tern				White Pelican				Grebe				Total
		F		NF		F		NF		F		NF		F		NF		F		NF		
Weekly Total		87		18		0		0		0		0		306		38		422		16		887
Avg/Survey		6		1		0		0		0		0		22		3		30		1		63