


FISHWAY STATUS REPORT

Date: 9/16/2017
Inspection Period: 9/10/2017 thru 9/16/2017



**US Army Corps
of Engineers**
Portland District

JOHN DAY DAM

JD/WC Project-Fisheries
P.O. Box 823
Rufus, Oregon 97050
Phone: 541-506-7860

All JD Fishways are inspected twice per day during fish passage season, Mar. 1 - Nov. 30.
Frequent monitoring of the PLC displays in SMF Fisheries Office as necessary.

John Day Dam	Inspections	Criteria	Total Number of Inspections: 13	Temperature: 71 F
	Out of Criteria	Limit		Secchi: 6.0 Ft.
NORTH FISHWAY			In service with all 6 AWS pumps available since 1/19/17.	
Exit differential	0	≤ 0.5'		
Exit Control weirs	0	High setting	High setting is normal for JDN	
Count station differential	0	≤ 0.3'		
Weir crest depth (DS gauge)	0	1.0' ± 0.1'		
Entrance differential	0	1.0' - 2.0'	AVG 1.5	
SOUTH FISHWAY			In service since 3/3/17 with 2 out of 3 AWS turbines available.	
Exit differential	0	≤ 0.5'		
Exit Control weirs	0	Mid setting	Mid setting is normal for JDS	
Count station differential	0	≤ 0.3'		
Weir crest depth (US gauge)	0	1.0' ± 0.1'		
South entrance differential	0	1.0' - 2.0'	AVG 1.4	
Entrance weir SE1	0	depth (≥ 8')	AVG 8.7	
Collection channel velocity	0	1.5 - 4 fps	AVG 2.42	
N. Entrance PH(Bay 19)differential	0	1.0' - 2.0'	AVG 1.5	
Entrance weir NE1	0	depth (≥ 8')	AVG 8.2	
Entrance weir NE2	0	depth (≥ 8')	AVG 8.2	
JUVENILE PASSAGE			JBS in service since 3/30/17.	
Forebay/bypass conduit differential	0	4.0' - 5.0'	AVG 4.6	Manual mode due to CH sensor failure 8/28 - 9/13/17.
Submersible traveling screens	0	visual inspect	STS underwater camera inspection scheduled for next week, 9/18/17.	
Turbine trashrack drawdown	0	<1.5', wkly	Trashrack Crane in service since 6/01.	
Vert barrier screen drawdown	0	<1.5', wkly		
Spill volume	0	FOP	Fish spill ended and two TSW were shut down on 8/31.	
Spill pattern	0	TSW per FPP	All Spillway bays in service since 5/22.	
Turbine Unit Priority	0	per FPP		
Turbine 1% Efficiency	0	per FPP		

SMOLT MONITORING FACILITY

Operation:

SMF in a limited, twice a week, 6 hrs sampling due to river temperatures above 70F since 7/23/17.

Maintenance:

STS annual maintenance all complete in mid-May.

SMF SCADA update/mods' investigation by JD Electrical/ Portland District Engineers is underway.

Research: None

Birds :

USDA gull hazing from a boat downstream of JD Tailrace BRZ ended on 7/30/17.

see the Avian Numbers tab.

6 Tower-to-Tower, 6 spillway (1 failed 23 August,) 4 Navlock and 4 PH lines are missing out of 125 grid's total. They will be reinstalled for the 2018 passage season.

Operations:

Spillbay #20 continues reduced to 3 stops after two adult chinook salmon were found stranded on the adjacent tailrace deck on 5/30 (see JDA08MFR.)

Trashrack Crane in service since 6/01/17.

JD South Fishway in service with two AWS Turbines and meeting all FPP criteria since 3/3/17.

JD North Fishway in service with all 6 AWS pumps available and meeting all FPP criteria since 1/19/17.

MU Gatewell Drawdowns: weekly or more frequently as necessary.

Maintenance:

JBS Tainter Gate was in manual mode due to the Channel's sensor failure since 8/27. Fixed on 9/13 and TG returned to Auto Mode that day.

Trashrack Crane was repaired/ returned to service on 6/01.

JD STS crane's emergency repairs were all completed in February with the minor glitches/ adjustments continuing. The crane remains in a risky operational condition until it's replaced with a brand new machine. However, the \$ 5 million for its replacement is not yet available.

Calibration: All gauges/ sensors are within the criteria of 0.3' .

Research:

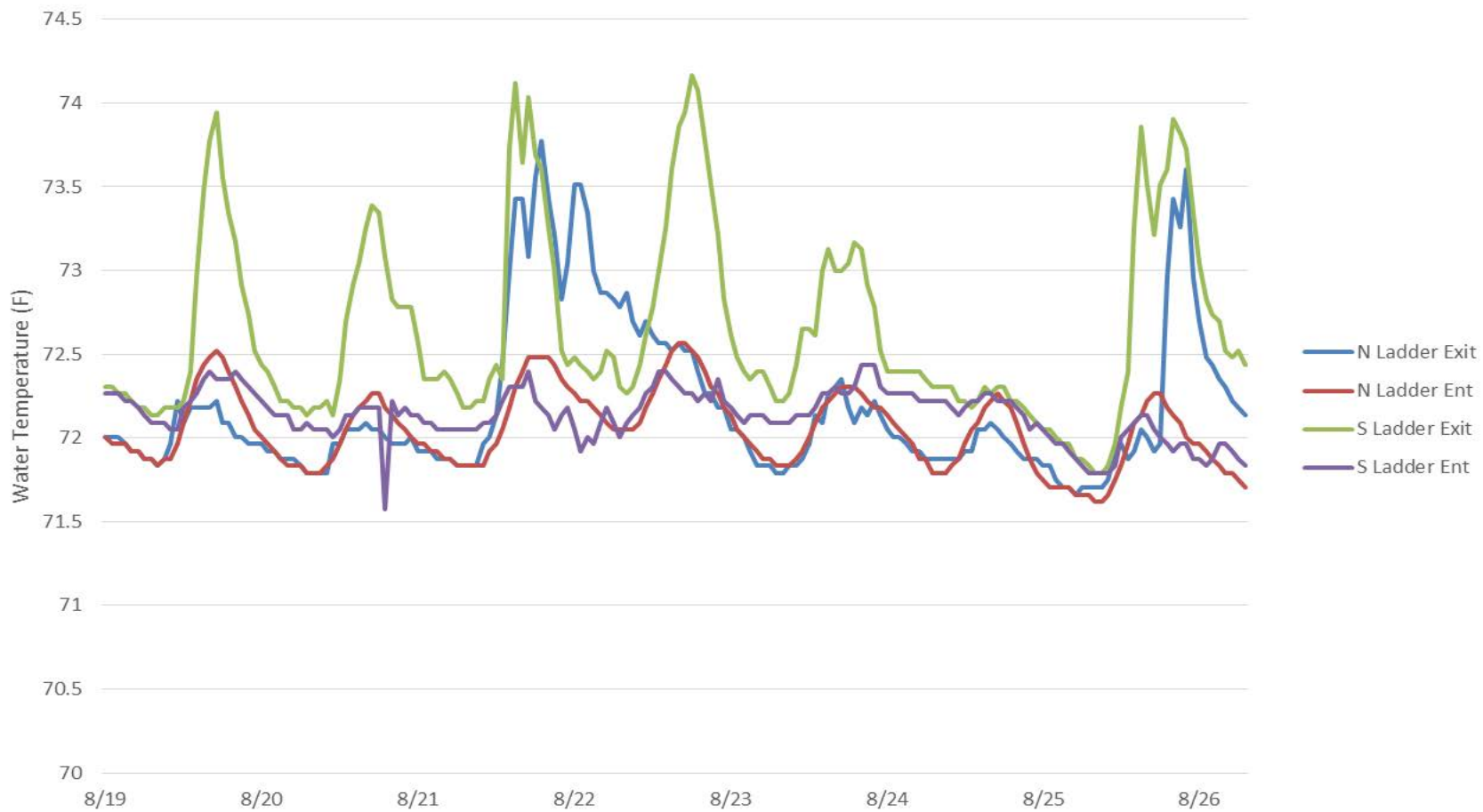
All tribal lamprey trapping successfully ended on 8/18/17.

WDFW angling crew continues the pikeminnow removal from JD PH tailrace (fishing from PH deck) since 5/15. Great catches with 3,332 NPM total by 9/3/17.

Adult PIT antennas' installation at JD South Fishway finished on 23 Feb. Both ladders' antennas in service with temporary power sources. Phase 2 support contract to install building/ office spaces plus electrical and Gorgenet hookups underway since 7 August.

E-Signed by MOYNAHAN, KEVIN, PATRICK, 1393959157
VERIFY authenticity with ApproveIt

John Day Dam Fishladder Water Temperatures (8/19/17 - 8/26/17)



JDA Collection Channel Velocity

Date 26-Aug-17

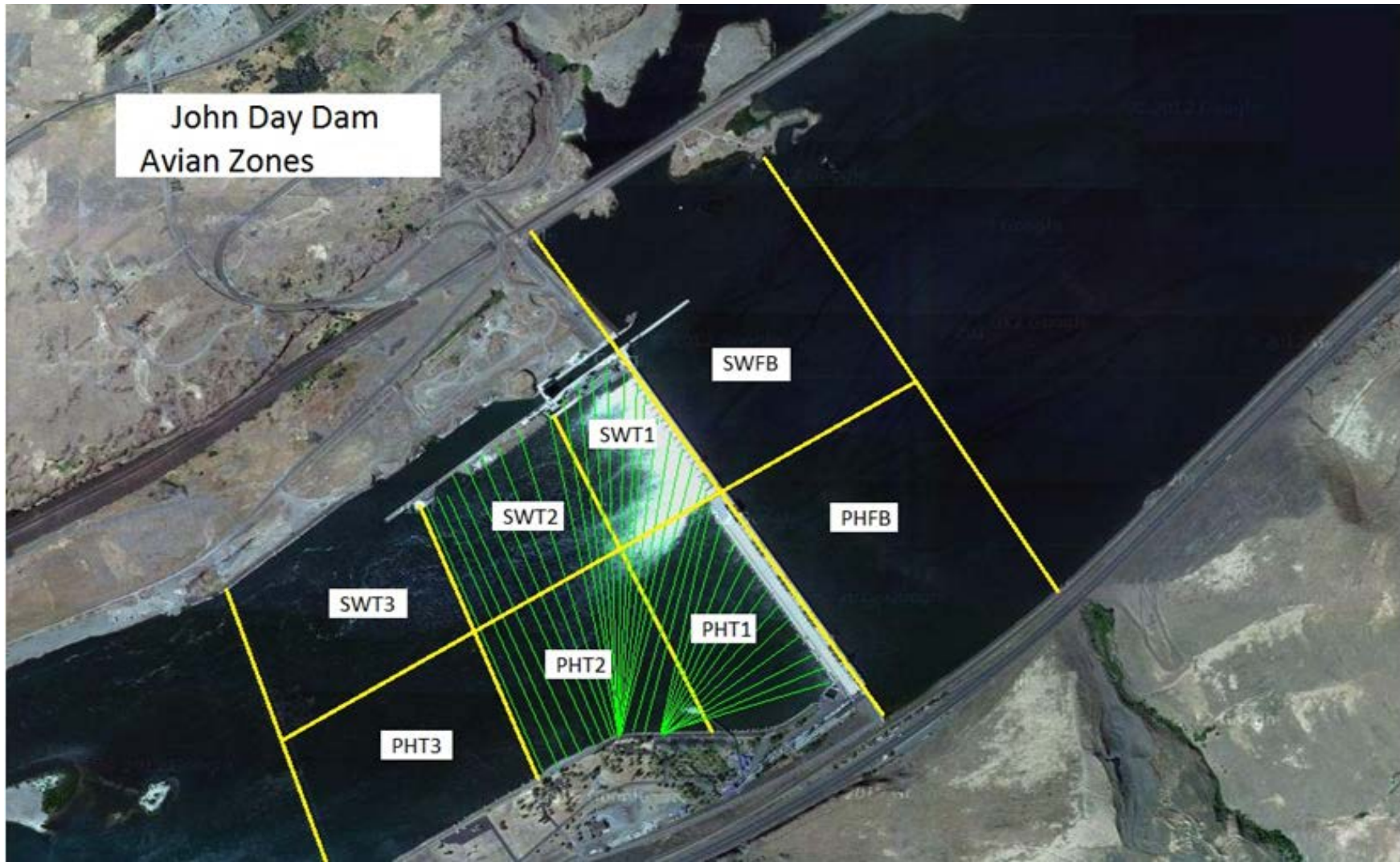
By: MDL

Bay(s)	Time	Sec.	Velocity (f/s)
0-2	1:19	79	2.28
2 - 4	2:33	153	2.43
4 - 6	3:51	231	2.31
6 - 8	5:08	308	2.34
8 - 10	6:20	380	2.50
10 - 12	7:38	458	2.31
12 - 14	8:56	536	2.31
14 - 16	10:10	610	2.43
16 - 18	11:13	673	2.86
			2.42

TW Bay19= 159.7

RPMs 68/68

John Day Dam
Avian Zones



John Day Weekly Averages

	Temp:	Secchi:	Fallbacks	
Sun	72	6.0		0.0
Mon	72	6.0	13	6 hour, sample mode
Tue	72	6.0		
Wed	71	6.0		
Thur	71	6.0	6	6 hour sample mode
Fri	70	6.0		
Sat	70	6.0		
AVG:	71	AVG: 6.0	AVG 10	
			MAX 13	
			MIN 6	

Tainter gate in manual mode but in criteria- due to CH sensor failure							
	NE1	NE2	S.Ent	SE1	N.Ent	JBS Diff	Bay19
Sun	8.2	8.4	1.5	8.7	1.6	4.0-5.0	1.3
Sun	8.2	8.3	1.4	8.8	1.5	4.0-5.0	1.5
Mon	8.1	8.0	1.5	8.2	1.6	4.0-5.0	1.8
Mon	8.3	8.4	1.0	9.4	1.5	4.0-5.0	1.4
Tues	8.2	8.3	1.4	8.0	1.4	4.0-5.0	1.8
Tues	8.3	8.5	1.4	8.8	1.4	4.0-5.0	1.8
Wed	8.0	8.0	1.4	8.0	1.5	4.0-5.0	1.8
Wed	8.3	8.3	1.2	9.3	1.4	4.6	1.3
Thur	8.2	8.2	1.3	8.6	1.5	4.7	1.3
Thur	8.2	8.2	1.3	9.0	1.5	4.6	1.4
Fri	8.1	8.1	1.4	8.7	1.6	4.6	1.5
Fri	8.2	8.2	1.3	8.9	1.5	4.5	1.4
Sat	8.1	8.1	1.4	8.7	1.5	4.5	1.4
Sat	8.1	8.1	1.5	8.7	1.5	4.6	1.5
AVG:	8.2	8.2	1.4	8.7	1.5	4.6	1.5

JDA Bird Counts: 9/10/17 to 9/16/17

F(1): Forage AM survey F(2): Forage PM Survey NF(1): Non-Forage AM Survey NF(2): Non-Forage PM Survey

Date	Zone	Gulls				Cormorant				Caspian tern				White Pelican				Grebe				Total
		F(1)	F(2)	NF(1)	NF(2)	F(1)	F(2)	NF(1)	NF(2)	F(1)	F(2)	NF(1)	NF(2)	F(1)	F(2)	NF(1)	NF(2)	F(1)	F(2)	NF(1)	NF(2)	
10-Sep	PHFB	0	0	38	1	0	0	0	9	0	0	0	0	0	0	0	0	18	10	17	10	103
10-Sep	SWFB	0	0	0	2	0	0	0	0	0	0	0	0	0	0	0	0	0	0	0	0	2
10-Sep	PH1	0	0	0	0	1	0	0	0	0	0	0	0	0	0	0	0	0	0	0	0	1
10-Sep	PH2	1	0	0	0	0	0	0	0	0	0	0	0	0	0	0	0	0	0	0	0	1
10-Sep	PH3	0	0	0	0	0	0	0	0	0	0	0	0	0	3	0	0	0	0	0	0	3
10-Sep	SW1	0	0	0	0	0	0	0	0	0	0	0	0	0	2	0	0	0	0	0	0	2
10-Sep	SW2	0	0	0	0	0	1	27	0	0	0	0	0	0	0	0	0	0	0	0	0	28
10-Sep	SW3	0	0	0	0	0	0	0	0	0	0	0	0	0	0	0	0	0	0	0	0	0
Avg/Survey		1	21	1	18	0	0	3	0	14	14	140										
11-Sep	PHFB	0	0	0	0	0	0	31	0	0	0	0	0	0	0	0	0	27	27		85	
11-Sep	SWFB	0	0	10	0	0	0	0	0	0	0	0	0	0	0	0	0	0	3		13	
11-Sep	PH1	0	0	2	0	1	0	0	0	0	0	0	0	0	0	0	0	0	0		3	
11-Sep	PH2	0	0	0	0	0	0	0	0	0	0	0	0	0	0	0	0	0	0		0	
11-Sep	PH3	0	0	0	0	0	0	13	0	0	0	0	0	0	0	0	0	0	0		13	
11-Sep	SW1	0	0	0	0	0	0	0	0	0	0	0	0	0	0	0	0	0	0		0	
11-Sep	SW2	0	0	0	0	0	0	3	21	0	0	0	0	0	0	0	0	0	0		24	
11-Sep	SW3	0	0	0	0	0	0	3	0	0	0	0	0	0	0	0	0	0	0		3	
Avg/Survey		0	6	1	36	0	0	0	0	0	0	29	141									
12-Sep	PHFB	0	0	35	0	0	0	39	1	0	0	0	0	0	0	0	0	28	31		134	
12-Sep	SWFB	0	0	0	0	0	0	0	0	0	0	0	0	0	0	0	0	0	0		0	
12-Sep	PH1	0	0	0	0	2	0	0	1	0	0	0	0	0	0	0	0	0	0		3	
12-Sep	PH2	0	0	0	0	0	0	0	0	0	0	0	0	0	0	0	0	0	0		0	
12-Sep	PH3	0	0	0	0	0	0	5	0	0	0	0	0	0	0	0	0	0	0		5	
12-Sep	SW1	0	0	0	0	0	0	0	0	0	0	0	0	0	0	0	0	0	0		0	
12-Sep	SW2	0	0	0	0	0	0	0	62	0	0	0	0	0	0	0	0	0	0		62	
12-Sep	SW3	0	0	0	0	0	0	7	0	0	0	0	0	0	0	0	0	0	0		7	
Avg/Survey		0	18	1	58	0	0	0	0	0	0	30	211									
13-Sep	PHFB	0	0	0	55	0	0	35	0	0	0	0	0	0	0	33	0	0	36		159	
13-Sep	SWFB	0	0	48	0	0	0	0	0	0	0	0	0	0	0	0	0	0	0		48	
13-Sep	PH1	0	6	0	0	0	1	0	0	0	0	0	0	0	0	0	0	0	0		7	
13-Sep	PH2	0	0	0	0	0	0	0	0	0	0	0	0	0	2	0	0	0	0		2	
13-Sep	PH3	0	0	0	0	0	0	0	0	0	0	0	0	0	0	0	0	0	0		0	
13-Sep	SW1	0	0	0	0	0	0	0	0	0	0	0	0	0	0	0	0	0	0		0	
13-Sep	SW2	0	0	0	0	0	0	1	21	0	0	0	0	0	0	2	5	0	0		29	
13-Sep	SW3	0	0	0	0	0	0	0	0	0	0	0	0	0	0	0	0	0	0		0	
Avg/Survey		3	52	1	29	0	0	0	0	5	17	18	245									

JDA Bird Counts: 9/10/17 to 9/16/17

F(1): Forage AM survey F(2): Forage PM Survey NF(1): Non-Forage AM Survey NF(2): Non-Forage PM Survey

Date	Zone	Gulls				Cormorant				Caspian tern				White Pelican				Grebe				Total
		F(1)	F(2)	NF(1)	NF(2)	F(1)	F(2)	NF(1)	NF(2)	F(1)	F(2)	NF(1)	NF(2)	F(1)	F(2)	NF(1)	NF(2)	F(1)	F(2)	NF(1)	NF(2)	
14-Sep	PHFB	0	0	6	0	0	0	32	0	0	0	0	0	0	0	0	0	0	1	13	13	65
14-Sep	SWFB	0	0	48	0	0	0	0	0	0	0	0	0	0	0	0	0	0	0	0	0	48
14-Sep	PH1	3	6	0	0	5	7	0	0	0	0	0	0	0	0	0	0	0	0	0	0	21
14-Sep	PH2	0	0	0	0	0	0	0	0	0	0	0	0	0	0	0	0	0	0	0	0	0
14-Sep	PH3	0	0	0	0	0	0	0	0	0	0	0	0	0	0	0	0	0	0	0	0	0
14-Sep	SW1	0	0	0	0	0	0	0	0	0	0	0	0	0	0	0	0	0	0	0	0	0
14-Sep	SW2	0	0	0	0	0	0	0	0	0	0	0	0	0	0	0	0	0	0	0	0	0
14-Sep	SW3	0	0	0	0	0	0	0	0	0	0	0	0	0	0	0	0	0	0	0	0	0
Avg/Survey		5	27	6	16	0	0	0	0	0	0	0	1	13						134		
15-Sep	PHFB	0	8	0	0	0	0	29	0	0	0	0	0	0	0	0	0	0	0	71	0	108
15-Sep	SWFB	0	0	21	33	0	0	0	0	0	0	0	0	0	0	0	0	0	0	0	0	54
15-Sep	PH1	2	5	0	0	4	5	0	0	0	0	0	0	0	0	0	0	0	0	0	0	16
15-Sep	PH2	1	0	0	0	0	0	0	0	0	0	0	0	0	0	0	0	0	0	0	0	1
15-Sep	PH3	0	0	0	0	0	0	0	0	0	0	0	0	0	0	0	0	0	0	0	0	0
15-Sep	SW1	0	0	0	0	0	0	0	0	0	0	0	0	0	0	0	0	0	0	0	0	0
15-Sep	SW2	0	0	0	0	0	0	16	27	0	0	0	0	0	0	0	0	0	0	0	0	43
15-Sep	SW3	0	0	0	0	0	0	0	0	0	0	0	0	0	0	0	0	0	0	0	0	0
Avg/Survey		8	27	5	36	0	0	0	0	0	0	0	0	0	36						222	
16-Sep	PHFB	0	0	0	0	0	0	0	20	0	0	0	0	0	0	0	0	0	0	0	0	20
16-Sep	SWFB	0	19	13	0	0	0	0	0	0	0	0	0	0	0	0	0	0	0	0	0	32
16-Sep	PH1	0	4	0	0	3	6	0	0	0	0	0	0	0	0	0	0	0	0	0	0	13
16-Sep	PH2	0	2	0	0	0	0	0	0	0	0	0	0	0	0	0	0	0	0	0	0	2
16-Sep	PH3	0	3	0	0	0	0	0	0	0	0	0	0	0	0	0	22	0	0	0	0	25
16-Sep	SW1	0	0	0	0	0	0	0	0	0	0	0	0	0	0	0	0	0	0	0	0	0
16-Sep	SW2	0	0	0	0	0	0	0	21	0	0	0	0	0	0	0	0	0	0	0	0	21
16-Sep	SW3	0	0	0	0	0	0	0	0	0	0	0	0	0	0	0	0	0	0	0	0	0
Avg/Survey		14	7	5	21	0	0	0	0	0	0	0	11	0	0						113	
Totals		Gulls				Cormorant				Caspian tern				White Pelican				Grebe				Total
		F	NF	F	NF	F	NF	F	NF	F	NF	F	NF	F	NF	F	NF	F	NF	F	NF	
Weekly Total		60	312	36	424	0	0	5	31	62	276						1206					
Avg/Survey		4	22	3	30	0	0	0	2	4	20						86					