

MEMORANDUM FOR Biologist, Operations Division (CENWP-OD)
 SUBJECT: Bonneville Project, Fishway and Fish Activities for Week 27 of 2018, which covers the period from 01 - 07 July.

1. OPERATION SUMMARY:

- a. Daily average river flows ranged from 149.5 to 214.6 kcfs. Daily average powerhouse forebay elevation ranged from 73.0' to 73.6' msl. Daily average project tailwater ranged from 12.9' to 17.7' msl. Secchi disk measurements ranged from 5.0' to 6.0'. Daily average water temperature ranged from 66°F - 67°F.
- b. Daily average spill ranged from 89.8 to 100.3 kcfs.
- c. Unit Operation. PH2 remains the priority powerhouse. Main unit drawdowns are measured every Monday and more frequently as needed.

(1) Table 1. Unit Outages.

Unit	OOS Date	RTS Date	Reason
07	0922 on 05 Apr	---	FO, Underrated Disconnect
08	0921 on 05 Apr	---	FO, Underrated Disconnect

- d. Fish Units. Second Powerhouse fish units provide attraction flow for the Washington Shore (WS) fish ladder.

(1) F2 goes into RS nightly from 2200-0400 for regular spill season PH2 Lamprey ops (per FPP 2.4.2.13.c.).

- e. Table 2. Fish unit drawdowns, in feet.

Date	F1	F2
7/1	0.4'	0.6'
7/2	0.3'	0.4'
7/3	0.4'	0.6'
7/4	0.3'	0.5'
7/5	0.3'	0.3'
7/6	0.8'	0.9'
7/7	0.3'	0.4'

2. MAINTENANCE ACTIVITIES:

- f. Auxiliary Water System Closures.
 - (1) FV6-9 was closed from 0825 to 0832 on 02 July for cleaning.
- g. STS/VBS Inspections. Nothing to report.
- h. Dewatering and Fish Salvages. Nothing to report.

2. RESEARCH:

- a. Normandeau – Fish counting. Daytime visual counting (0500 to 2100) began on 01 April. Nighttime video recording (2100-0500) began on 15 May. Fish counts can be viewed [here](#).
- b. PSMFC – Smolt Monitoring. Sample collections at the SMF began at 0700 on 02 March. Debris at the primary dewatering structure (PDS) and fish/debris separator was light consisting mostly of aquatic macrophytes and a few sticks. Gas Bubble Trauma (GBT) examinations began on 15 April and are typically performed two days per week through the end of spill. Results of this week's Gas Bubble Trauma (GBT) examinations: 200 subyearling Chinook examined with no GBT symptoms observed. Please follow this [link](#) to the FPC web page for further details. Fallbacks observed this week: 1 steelhead, 2 salmon and 1 unknown salmonid. No fish were collected for research this week.
- c. USDA – Avian hazing. Avian deck-based hazing began on 01 April.
- d. CRITFC – Adult Salmonid Sampling. Adult salmonid sampling in the adult fish facility (AFF) began on 25 April and occurs 5 days per week.
- e. University of Idaho. Evaluation of adult Pacific Lamprey passage behavior in relation to lower Columbia River dam modifications, AFEP Study Code LMP-P-17-1 began on 11 May.
- f. NOAA – Northwest Fisheries Science Center (Frick). Development and evaluation of an adult lamprey wetted wall structure at Bradford Island Fishway 2017-2019 began on 08 May.
- a. USFWS – Lower Columbia River Fish Health Center. Adult and juvenile American Shad will be collected from the project as part of the annual National Wild Fish Health Survey. BON mortalities will also be sent to the USFWS for pathogen analysis and potential causes of death.

3. FISHWAYS:

- a. Bradford Island went into Shad Mode on 27 May.
- b. Washington Shore went into Shad Mode on 09 June.
- c. Project biologists inspected from 01-07 July.
- d. Fish passage plan observations.

(1) Table 3. FPP out of criteria items.

Date	Location	FPP Violation	Cause	Response
Bradford Island				
7/2	S. PH1CC Entrance	Differential < 1.0'	Unknown	NA
Cascades Island – Nothing to Report				
Washington Shore				
7/2	SUE	Submergence < 13.0'	Unknown	NA
7/2	NUE	Submergence < 13.0'	Unknown	NA
7/2-7	NDE	Submergence < 13.0'	Unknown	NA
7/7	SDE	Submergence < 13.0'	Unknown	NA

- (2) SLEDS are still installed at all fishway entrances, per part iii, of section 2.4.2.11.iii of the FPP, as sea lions were still present at Bonneville.
- (3) B-Branch North Entrance Gate is to open at tailwater below 17'. The mechanism is broken, and does not operate. It is awaiting repair.
- (4) On 01 May, FG6-11 was found broken partially open. The diffuser shaft had broken away from the motor. Due to the subsidence issues at Cascades Island, repairs can not occur until crane support is allowed in the vicinity.
- (5) Bonneville had the majority of its avian lines broken due to ice storms during the 2016/17 winter. Avian lines began replacement on 19 March. All zones had been installed besides PH2. PH2 lines are awaiting installation pending material procurement. Numerous lines have since been broken again by high flows and debris at CI and Spillway locations.
- (6) PH2 diffuser B4 was discovered to have its stem bent on 24 May 2017. This likely occurred while trying to close and the valve is believed to be open. It should be closed at tailwaters above 31.0' and below 11.0' msl.

c. Adult Fishways.

- (1) The AFF remains in service.
- (2) Sensor calibration occurred on 01 July.

(3) SLEDs are installed at all entrances.

d. Juvenile Fishways.

- (1) The ITS remains in service.
- (2) The hydro-cannon remains in service.
- (3) The B2CC remains in service.
- (4) The DSM remains in service.
- (5) STSs are installed.

e. Lamprey Fishways.

- (1) The Bradford Island, Cascades Island, and WA Shore AWS LPSs remain in service.
- (2) The NDE Lamprey Flume Structure (LFS) remains in service.
- (3) The AFF lamprey trap remains in service.
- (4) The Bradford Island Lamprey Wetted Wall remains in service.

f. Avian Monitoring. Bird counts are recorded between 01 April and 31 October.

Date	Gulls	Cormorants	Terns	Wh. Pelicans	Grebes
7/1	2	10	0	0	0
7/2	0	8	0	0	0
7/3	0	0	0	0	0
7/4	0	0	0	0	0
7/5	0	0	0	0	0
7/6	0	18	0	0	0
7/7	1	4	0	0	0

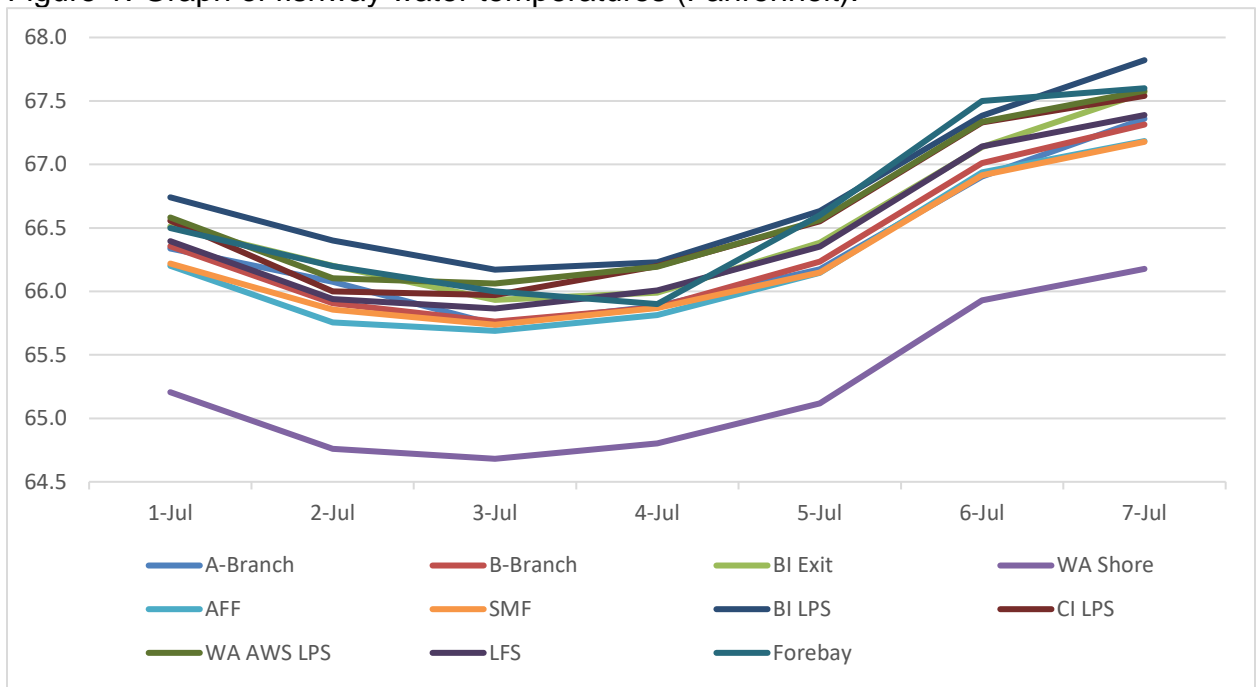
4. WATER QUALITY MONITORING:

a. Fishway Temperatures. Temperatures are taken from 01 March through 30 November.

(1) Table 4. Average daily fishway water temperatures (Fahrenheit).

Date	A-Branch	B-Branch	BI Exit	WA Shore	AFF	SMF	BI LPS	CI LPS	WA AWS LPS	LFS	Forebay
1-Jul	66.3	66.4	66.5	65.2	66.2	66.2	66.7	66.6	66.6	66.4	66.5
2-Jul	66.1	65.9	66.2	64.8	65.8	65.9	66.4	66.0	66.1	65.9	66.2
3-Jul	65.7	65.8	65.9	64.7	65.7	65.7	66.2	66.0	66.1	65.9	66.0
4-Jul	65.9	65.9	66.0	64.8	65.8	65.9	66.2	66.2	66.2	66.0	65.9
5-Jul	66.2	66.2	66.4	65.1	66.1	66.1	66.6	66.6	66.6	66.4	66.6
6-Jul	66.9	67.0	67.1	65.9	66.9	66.9	67.4	67.3	67.3	67.1	67.5
7-Jul	67.4	67.3	67.6	66.2	67.2	67.2	67.8	67.5	67.6	67.4	67.6

(2) Figure 1. Graph of fishway water temperatures (Fahrenheit).



b. Zebra Mussel Monitoring. No signs of colonization were observed this reporting week.

6. CONSTRUCTION:

a. Construction on the PH2 re-roofing project has begun.

7. HAZMAT, SPILLS AND CLEANUP: Nothing to report.

8. TELETYPES CURRENTLY IN EFFECT:

- a. A teletype sent on 13 June outlines the summer spill schedule related to fish passage. Effective 0001 on 16 June until 2359 on 31 August, operate Bonneville dam in accordance with the 2018 summer fish operations plan to provide spill for fish passage.
- b. A teletype sent on 27 June requests that the Bonneville forebay be operated at 74.0' or below as a soft constraint. The purpose is to maximize recreational opportunities at the Hood River sand bar.
- c. A teletype sent on 29 June requests a 1.5' band as a hard constraint to accommodate tribal treaty fishing from 0600 on 02 July until 1800 on 06 July.
- d. A teletype sent on 06 July requests that the Bonneville forebay be maintained at $\geq 73.5'$ as a hard constraint and $\geq 74.0'$ as a soft constraint from 1000 to 1200 on 14 July. The intended purpose is to accommodate launching and landing large canoes during the Gorge Outrigger Canoe races near Stevenson, WA.

MICHAEL ADAMS, P.E.
Operations Manager
Bonneville Project