

## MEMORANDUM FOR Biologist, Operations Division (CENWP-OD)

SUBJECT: Bonneville Project, Fishway and Fish Activities for Week 40 of 2015, which covers the period from 27 September – 03 October 2015.

**1. OPERATION SUMMARY:**

a. Daily average river flows ranged from 79.0 to 121.1 kcfs. Daily average powerhouse forebay elevation ranged from 75.8 to 76.1 msl. Daily average project tailwater ranged from 8.3 to 11.4 msl. Secchi disk measurements remained at 7.0' or greater. Daily average water temperature remained at 65°F this week.

b. Summer spill ended on 31 August. Daily average spill ranged from 1.2 to 1.3 kcfs.

c. Unit Operation. Powerhouse two remains the priority powerhouse. Split flow operations per FPP 2.1.2.1 came into effect 1 September and ended 24 September. Main unit draw downs are measured every Monday and more frequently as needed.

## (1) Table 1. Unit Outages.

Unit	OOS Date	RTS Date	Reason
5	0822 on 1Oct	0846 on 1Oct	North Bonn. breaker A-6 open
6	0822 on 1Oct	0846 on 1Oct	North Bonn. breaker A-6 open
7	0943 on 29 Jul	1120 on 1 Oct	5-year overhaul
8	0822 on 1Oct	0846 on 1Oct	North Bonn. breaker A-6 open
11	1003 on 31 Aug	---	Kaplan pipe leak, T11 outage
12	0001 on 1 Sept	---	T11 outage
13	0001 on 1 Sept	---	T11 outage
14	0001 on 1 Sept	---	T11 outage

d. Fish Units. Second Powerhouse fish units provide attraction flow for the Washington Shore (WS) fish ladder.

(1) F1 was placed in reserve service from 2122 on 29 September to 0130 on 30 September to float trash.

(2) F2 was placed in reserve service from 2122 on 29 September to 0132 on 30 September to float trash.

(3) Table 2. Fish unit drawdowns, in feet.

Date	F1	F2
9/27	0.9	0.3
9/28	0.4	0.3

9/29	3.0	3.0
9/30	0.3	0.3
10/1	0.2	0.2
10/2	0.2	0.2
10/3	0.3	0.4

## 2. ACTIVITIES:

### a. Auxiliary Water System Closures.

(1) FV1-1 was closed for cleaning from 0719 to 0745 on 29 September.

### b. STS/VBS inspections. None.

### c. Dewatering and Fish Salvages.

(1) On 30 September, Project Biologists recovered 1 White Sturgeon from the unit 7 tail logs. The fish was returned to the tailrace in good condition.

## 3. RESEARCH:

### a. CRITFC – AFF. Adult salmonids sampling continues.

### b. Normandeau – Fish Counting. Visual counting continues.

c. PSMFC – Smolt Monitoring Program. Juvenile fish condition and index monitoring continues. No research fish were collected this week. Gas Bubble Trauma (GBT) evaluations have concluded for the season. Fallbacks recorded crossing the separator bars this week: 10 salmon. More details can be found on the [FPC web page](#).

## 4. FISHWAYS:

### a. Project biologists inspected 27 September – 03 October.

### b. Fish passage plan observations.

(1) Table 3. FPP out of criteria items.

Date	Location	FPP Items	Cause	Response
<b>BRADFORD ISLAND – See below</b>				
9/27-29,10/2	A-branch	Water over weir > 1.1'	Suspected conduit leak	None
9/27-28,10/1-3	B-branch	N entrance gate closed	Gate motor waiting insall	See 4.b.4
<b>CASCADES ISLAND – See below</b>				
9/27,30	CI entrance	Entr differential < 1.0'	FV5-4 OOS	See 4.b.6
<b>WASHINGTON SHORE – See below</b>				
9/27	Weir 37	Water over weir < 0.9'	Unknown	None

(2) WG-1, one of the south PH1CC entrances, experienced a gate failure on 17 November. Divers recovered the gate's picking beam on 04 August. Repairs are ongoing. The gate is estimated to return to service during the 2015/16 winter maint.

(3) A-branch diffuser FG3-3 is mechanically bound. Repairs are not possible until A-branch is dewatered below tailwater during the 2015/16 winter maintenance period.

(4) B-branch gate 4N, adjacent to the fish entrance, had a bad motor. It was removed on 27 July and has been repaired. It's waiting reinstallation during the 2015/16 winter maintenance. 4N is closed and 4S is open in its place. Both gates should be open below tailwaters of 9.0 msl.

(5) PH2CC diffuser A2 was unable to be repaired during winter maintenance and remains closed. The gate for diffuser B5 was removed for repairs and therefore cannot be closed.

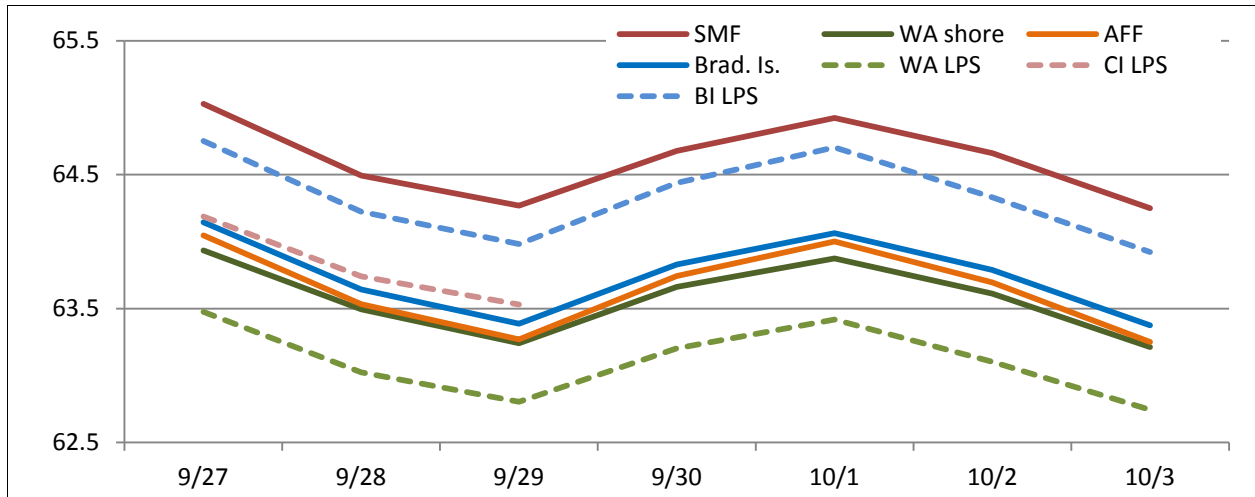
(6) FV5-4 was discovered to have mechanical problems on 21 April. It is currently closed and in manual. Diffusers FG3-9 through 15 are open and in manual to compensate. Repairs have been coordinated for October. See [15BON06](#).

c. Fishway Temperatures. Temperatures are taken from 01 March through 30 November. Forebay temperatures can be found [online](#).

(1) Table 4. Daily Average Temperature in Degree Fahrenheit (°F).

Date	Fishways				Lamprey		
	Brad. Is.	WA shore	AFF	SMF	BI LPS	WA LPS	CI LPS
9/27	64.1	63.9	64.0	65.0	64.8	63.5	64.2
9/28	63.6	63.5	63.5	64.5	64.2	63.0	63.7
9/29	63.4	63.2	63.3	64.3	64.0	62.8	63.5
9/30	63.8	63.7	63.7	64.7	64.4	63.2	OOS
10/1	64.1	63.9	64.0	64.9	64.7	63.4	---
10/2	63.8	63.6	63.7	64.7	64.3	63.1	---
10/3	63.4	63.2	63.3	64.3	63.9	62.7	---

(2) Chart 1. Daily Average Temperature in Degree Fahrenheit (°F).



d. Zebra Mussel Monitoring. No signs of colonization were observed this reporting week.

e. Avian Monitoring. Bird counts are made between 01 April and 31 October.

(1) Table 5. Counts of tailrace foraging piscivorous birds.

Date	Gulls	Cormorants	Terns	Wh. Pelicans	Grebes
9/27	6	12	0	0	0
9/28	14	11	0	0	0
9/29	16	7	0	0	0
9/30	18	35	0	0	0
10/1	2	10	0	0	0
10/2	30	5	0	0	0
10/3	0	5	0	0	0

f. Adult Fishways.

(1) Calibration occurred on 3 October.

(2) 11 of 12 floating orifice gates (FOGs) are installed; one gate is out for maintenance. FOG SLEDs are installed.

(3) All SLEDs are removed.

g. Juvenile Fishways.

(1) The ITS remains open.

(2) The hydro-cannon remains in service.

(3) The B2CC remains closed.

(4) The DSM remains in service.

h. Lamprey Fishways.

(1) The NDE LPS was shut down at 0830 on 31 August due to low passage numbers.

(2) The Cascades Island LPS was shut down on 30 September due to pump damage paired with low passage numbers.

(3) The Bradford Island LPS and the WA shore AWS LPS remain in service.

**5. CONSTRUCTION:** Nothing to report.

**6. HAZMAT, SPILLS AND CLEANUP:** Nothing to report.

**7. TELETYPES CURRENTLY IN EFFECT:**

a. A teletype sent on 30 March updates the spill caps and lack of load conditions to be used from 0000 on 01 April until further notice.

b. A teletype sent on 24 September requests that BON pool operate within a 1.5' band, hard constraint, from 0600 on 28 September through 1800 on 1 October for treaty fishing.

c. A teletype sent on 24 September requests that from 0900 to 1300 on 27 September, BON forebay be maintained at 75.0 – 76.5', hard constraint, and 75.5 – 76.5', soft constraint so that the Hood River Yacht Club can access the boat ramp.

JERRY A. CARROLL  
Operations Manager  
Bonneville Project