



PSMFC McNary Dam, P.O. Box 1230, Umatilla, Oregon 97882
 Phone (541) 922-3630 Fax (541) 922-4101

McNary Temperature Report #8 August 2 - 8, 2013

A total of 35,700 juvenile salmonids were collected at the McNary Juvenile Fish Facility (JFF) (Figure 1 and Table 1). Subyearling fall chinook accounted for 98.8% of the total collection. Daily flows for this week averaged 173.5kcfs. Spill averaged 87.0kcfs (50.2%). The sample mortality averaged 0.68% for the week. System mortality averaged 0.06%. Mortalities are being enumerated from the separator, sample tanks and raceway 9W, which is the recovery holding raceway before fish are released back to the river.

Fish are bypassed to the river daily. Units 3, 4 and 11 are unavailable due to maintenance. All orifices are open.

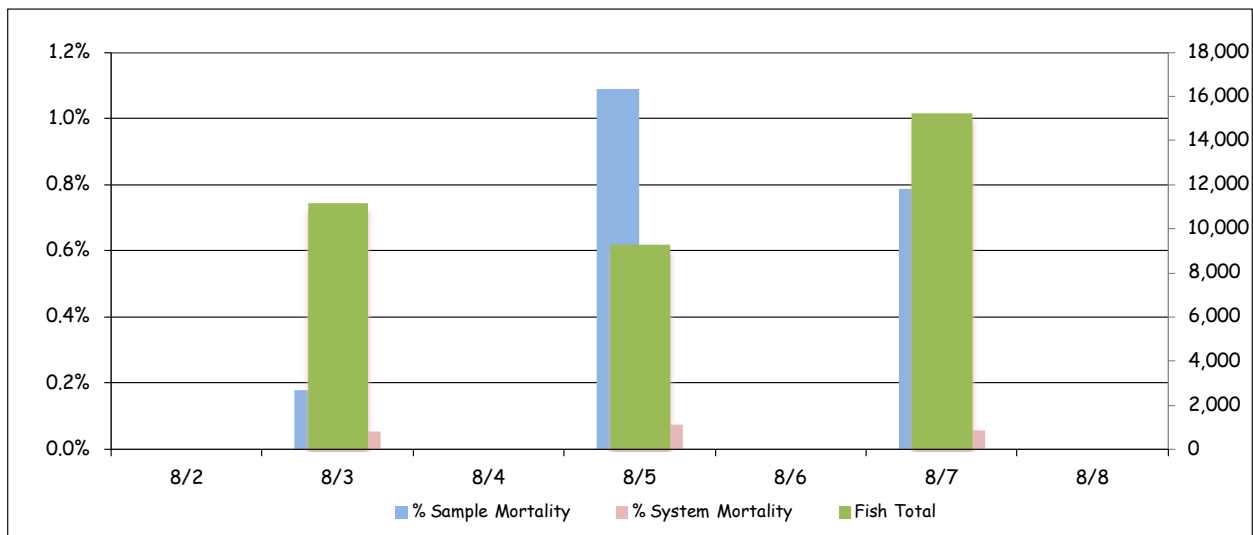


Figure 1: Collection and Mortality

Table 1: Collection and Mortality With Daily and Weekly Averages

	Collection	Mortality		Total	Flow		Air Temp		Wind Speed	
		Sample	System		Turbine	Spill	Avg.	Max.	Avg.	Max.
8/2/13	0			179.3	84.7	89.9	69.9	79.2	3.6	22.0
8/3/13	11,180	0.18%	0.05%	170.5	80.4	85.4	72.6	82.8	1.6	14.0
8/4/13	0			173.1	81.4	87.0	74.5	89.0	1.7	11.0
8/5/13	9,280	1.09%	0.08%	174.6	82.2	87.7	78.0	96.8	1.0	8.0
8/6/13	0			174.5	82.2	87.7	80.2	98.0	1.8	10.0
8/7/13	15,240	0.79%	0.06%	177.3	83.6	88.9	78.6	94.5	1.9	11.0
8/8/13	0			165.0	77.6	82.7	78.1	89.3	0.2	20.0
Weekly Average	5,100	0.68%	0.06%	173.5	81.7	87.0	76.0	98.0	1.7	22.0

Air temperatures at the McNary JFF averaged 76.0°F for the week. Maximum hourly air temperature was 98.0°F on August 6 (Figure 2). The minimum temperature was 61.0°F on August 3 from 6:30a.m. until 7:30a.m. Winds over the course of the week averaged 1.7mph, with gust peaking up to 22.0mph on August 2.

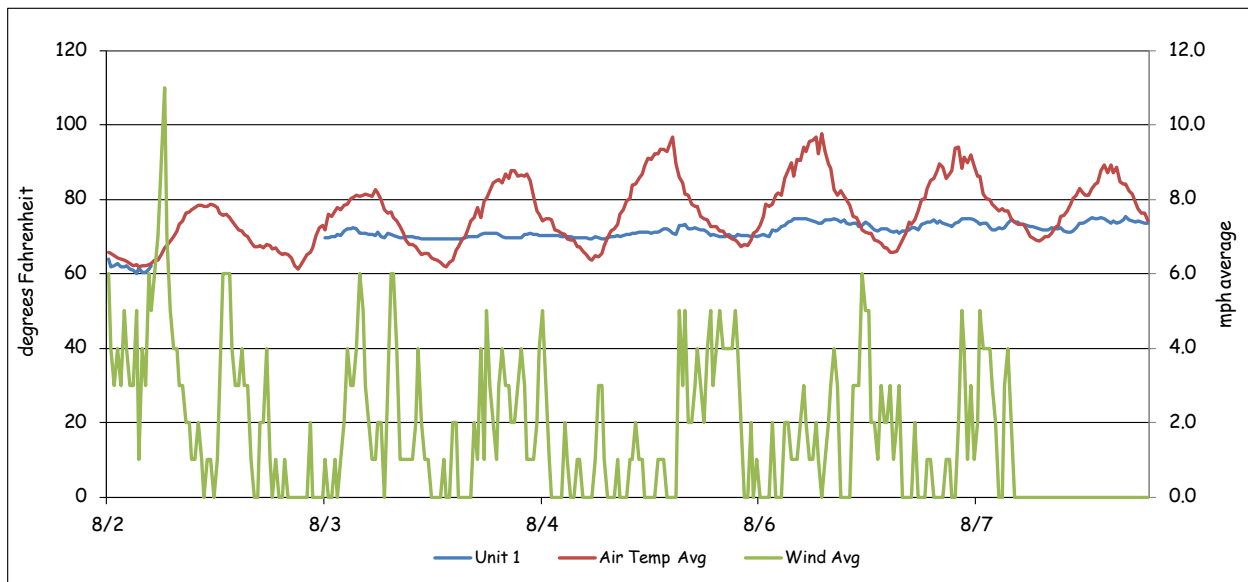


Figure 2: Weather and Forebay Water Temperature

There are 36 temperature probes located throughout the Project and the JFF. These probes are set to record temperatures at 30-minute intervals. These probes are located at the following locations:

- 1) Forebay, near elevation 335 approximately 5 feet below the surface. These are attached to the pier noses in front of turbine units 1, 3, 5, 7, 8, 10, 12, and 14.
- 2) In front of spillbays 22, 17, 12, 7 and 2, approximately 5 feet below the surface. These probes are hung in the center of the spillbay, on the tailrace side.
- 3) Attached to the handrail in the center of the “B” turbine gateway slots, approximately 2 to 3 feet below the surface, in all 14 turbine units.
- 4) Tailwater locations are at turbine unit 1 and 14 (tailrace), and the wingwall of the navigation lock. These were placed 5 feet below the water surface.
- 5) The collection channel had probes installed below turbine units 12, 8 and past unit 1 at the beginning of the transition screen.
- 6) The barge transportation dock.

- 7) Fish separator.
- 8) Sample fish recovery raceway #9W at a depth of 2 – 3 feet.
- 9) Sample holding tank.

Please note that points #8 & 9 are a change from previous years where the raceway probe was in transportation raceway #1; and there was not one in the sample tank. These changes were made in response to concerns over water temperatures where fish are being held. Raceway 9W is the only raceway that has continuous use since bypass operation is standard procedure.

Forebay water temperatures (Table 2) peaked this week with 79.3°F on August 7 at 6:00p.m. in front of unit 1. The average was 70.9°F across the forebay. Gatewell water temperatures for all units combined averaged 69.8°F (Table 3). Gatewell temperatures peaked at 75.2°F on August 8 in unit 1 at 8:00p.m.

Table 2: Forebay Water Temperatures

	Daily Average								Daily Max
	1F	3F	5F	7F	8F	10F	12F	14F	
8/2/13	70.1	69.5	69.4	69.4	69.0	68.1	69.5	69.4	71.1
8/3/13	70.4	68.9	69.3	69.4	69.6	68.7	70.1	69.9	73.4
8/4/13	69.7	69.3	69.4	69.7	69.2	68.5	69.9	69.2	72.3
8/5/13	71.1	69.8	70.7	71.6	70.8	69.8	71.7	72.3	76.6
8/6/13	72.2	71.5	71.9	72.1	71.6	70.5	71.8	71.8	75.6
8/7/13	73.8	72.4	71.6	73.5	72.9	71.6	73.6	72.9	79.3
8/8/13	74.0	73.1		72.9	72.1	71.4	72.7	72.6	76.8
Weekly Average	71.6	70.6	70.3	71.2	70.8	69.8	71.3	71.3	79.3

Table 3: Gatewell Water Temperatures for Units 1, 7 & 14

	Daily Avg.			Daily Max.			Daily Min.		
	1	7	14	1	7	14	1	7	14
8/2/13	61.6	69.5	69.3	63.9	70.3	69.8	59.9	69.1	68.9
8/3/13	70.5	69.2	69.6	72.3	70.5	70.9	69.6	68.7	68.5
8/4/13	69.9	69.4	68.9	70.9	70.3	69.8	69.3	68.7	68.4
8/5/13	70.7	70.5	69.1	73.2	73.2	69.8	69.3	69.3	68.7
8/6/13	72.1	71.7	69.5	74.7	74.1	70.5	69.8	70.0	69.1
8/7/13	72.9	72.1	69.7	74.8	75.0	70.5	70.9	70.5	69.3
8/8/13	73.2	72.3	71.4	75.2	74.1	74.3	71.1	71.1	70.2
Weekly Average	71.1	70.7	69.6	72.1	72.5	70.8	68.5	69.6	69.0

The differences in temperatures between the gatewell at unit 1 and the gatewell at unit 14 are illustrated in Figure 3. This graph takes the temperature in the gatewell and subtracts unit 14 from that gatewell (unit 1 – 14). It then continues down the powerhouse subtracting unit 14 from each consecutive unit. A negative number indicates that unit 14 was the warmer unit. Conversely, a positive number indicates that unit 14 was cooler. This shows the reader the amount of variance from one end of the powerhouse to the other that can be seen through out a 24-hour period.

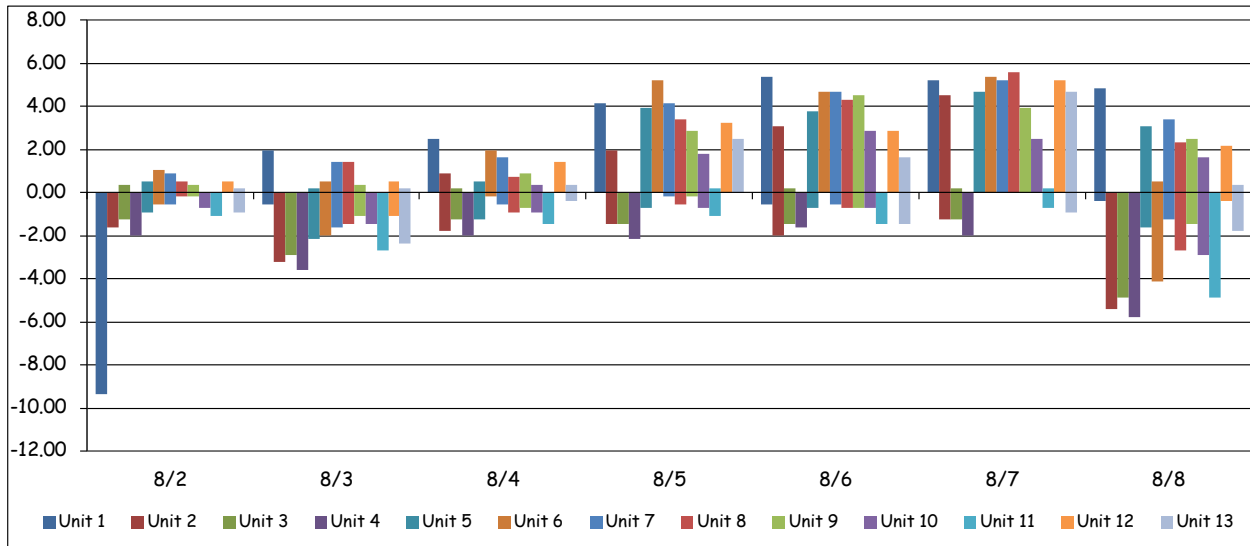


Figure 3: Average Gatewell Temperature Differentials for Units 1 - 14

Forebay differentials (Figure 4) are calculated by taking the forebay temperature and subtracting the corresponding gatewell temperature from it (1F – unit 1). A negative number would indicate that the gatewell was warmer. Conversely, a positive number indicates that the forebay is warmer. Again, this shows the reader the amount of variance that can be seen between the forebay and the gatewell throughout a 24-hour period.

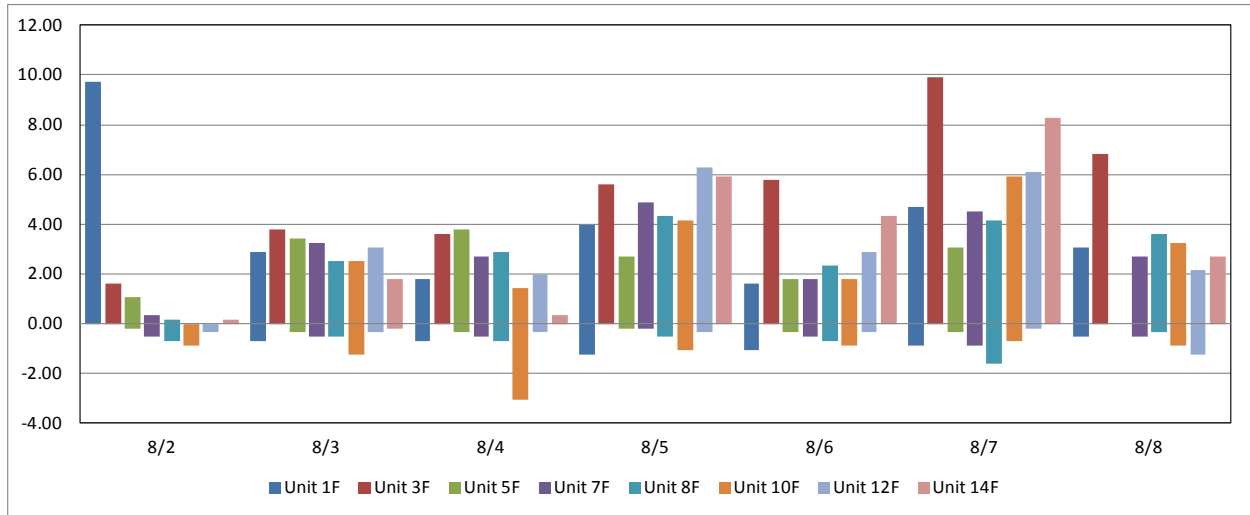


Figure 4: Average Temperature Differentials Between Forebay and Gatewell

Average water temperature in the collection channel was 70.0°F (Table 4) for the week. A maximum temperature of 73.4°F was recorded on August 8 at 7:00p.m., below Unit 8. Temperatures at the separator averaged 70.9°F for the week with a maximum daily temperature of 73.4°F (Table 5). The temperature in raceway 9W averaged 69.9°F with a high of 72.3°F August 7 from 8:00 until 9:30p.m. The sample holding tank had a high of 72.3°F also on August 7 at 6:30p.m. The average was 69.8°F.

Table 4: Collection Channel Average and Maximum Water Temperatures

	Daily Avg.			Daily Max.		
	1	8	12	1	8	12
8/2/13	69.5	70.1	68.3	69.8	70.5	68.7
8/3/13	69.2	70.1	68.4	69.6	70.7	69.4
8/4/13	69.2	69.9	68.1	70.0	70.5	68.7
8/5/13	69.8	70.4	68.4	71.1	71.4	69.4
8/6/13	70.8	71.3	69.2	71.6	72.3	70.2
8/7/13	71.1	71.7	70.0	72.7	73.4	72.0
8/8/13	71.1	72.2	70.9	71.8	73.4	73.0
Weekly Average	70.1	70.8	69.0	70.9	71.8	70.2

Table 5: Separator, Sample Holding Tank and Recovery Raceway 9W Maximum and Average Water Temperatures

	Daily Avg.			Daily Max.		
	Separator	Raceway 9W	Sample Tank	Separator	Raceway 9W	Sample Tank
8/2/13	70.3	69.3	69.2	70.7	69.6	69.6
8/3/13	70.0	69.0	68.9	70.5	69.6	69.4
8/4/13	69.9	69.0	68.9	70.5	69.6	69.6
8/5/13	70.5	69.6	69.4	71.8	70.9	70.9
8/6/13	71.5	70.6	70.5	72.3	71.4	71.4
8/7/13	71.9	70.9	70.8	73.4	72.3	72.3
8/8/13	71.9	70.9	70.8	72.5	71.4	71.4
Weekly Average	70.8	69.9	69.8	71.7	70.7	70.7

Collection channel differentials (Table 6) are calculated by taking the forebay temperature and subtracting the collection channel temperature from it at the three corresponding points. This is an average of the variances between the forebay and the collection channel. A negative number indicates that the collection channel was warmer. A positive number indicates the forebay was warmer. The graph (Figure 5) shows the variance through out the week.

Table 6: Average Differences between Forebay and Collection Channel

	1	8	12
8/2/13	0.6	-1.1	1.2
8/3/13	1.1	-0.5	1.7
8/4/13	0.5	-0.7	1.8
8/5/13	1.3	0.5	3.3
8/6/13	1.4	0.3	2.6
8/7/13	2.7	1.2	3.6
8/8/13	2.9	-0.1	1.8
Average	1.5	-0.1	2.3
Maximum	6.7	5.2	7.7
Minimum	-0.9	-2.3	-0.2

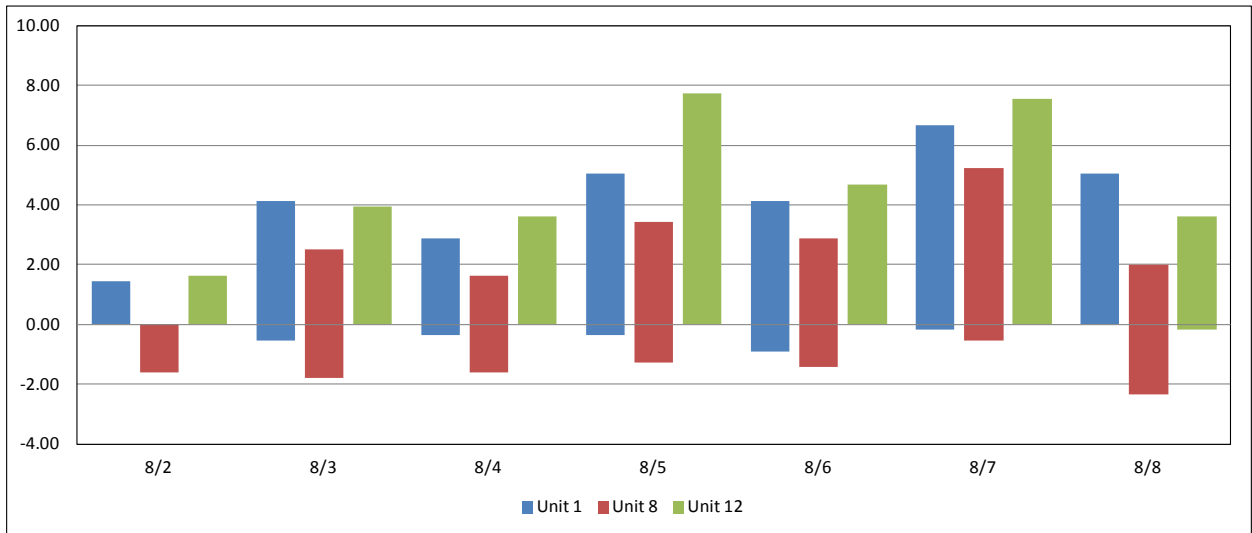


Figure 5: Average Temperature Differentials Between Forebay and Collection Channel