



PSMFC McNary Dam, P.O. Box 1230, Umatilla, Oregon 97882
 Phone (541) 922-3630 Fax (541) 922-4101

McNary Temperature Report #7
July 29 – August 4, 2011

A total of 411,700 juvenile salmonids were collected at the McNary Juvenile Fish Facility (JFF) for this weekly period (Figure 1 and Table 1). Subyearling fall chinook accounted for 99.7% of the total collection. Daily flows for this week averaged 233.9kcfs. There has been court ordered spill since April 10. Spill averaged 126.5kcfs. The system mortality averaged 1.4% and sample tank mortality averaged 1.3%. Mortalities are being enumerated from the sample tanks and all raceways.

Fish are being collected for every other day barging, with a 24-hour sample taken every day. Unit 1 and 10 are off for rewinding. All orifices are open. Beginning August 1, Units 3 – 8 are off line during the day for BPA to incorporate new lines into the system. These units will be turned on after 1600 hours if power demand deems it necessary.

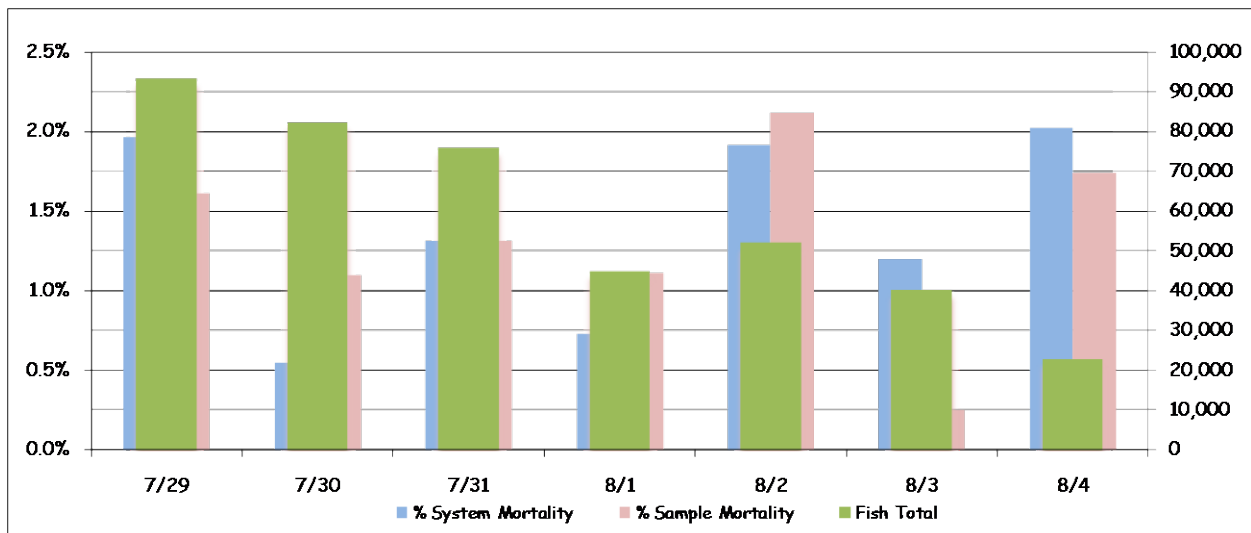


Figure 1: Collection and Mortality

Table 1: Collection and Mortality With Daily and Weekly Averages

	Collection	Mortality		Flow			Air Temp		Wind Speed	
		Sample	System	Total	Turbine	Spill	Avg.	Max.	Avg.	Max
7/29/11	93,200	1.61%	1.97%	239.3	115.4	119.2	73.7	91.4	1.7	11.0
7/30/11	82,300	1.09%	0.54%	250.7	120.9	125.1	76.2	94.7	2.0	18.0
7/31/11	75,900	1.32%	1.31%	232.8	111.7	116.4	76.7	92.1	2.2	19.0
8/1/11	45,000	1.11%	0.73%	253.8	120.7	128.5	74.7	85.9	2.0	13.0
8/2/11	52,100	2.12%	1.91%	212.0	89.8	117.5	76.2	91.8	2.3	16.0
8/3/11	40,200	0.25%	1.20%	221.6	77.7	139.2	75.9	93.6	1.6	10.0
8/4/11	23,000	1.74%	2.03%	226.9	82.9	139.3	77.0	93.2	1.5	18.0
Weekly Average	58,814	1.34%	1.35%	233.9	102.7	126.5	75.8	94.7	1.9	19.0

Air temperatures are warming at the McNary JFF, with an average of 75.8°F for the week. Maximum hourly air temperature was 94.7°F on July 30 (Figure 2). The minimum temperature was 60.7°F on July 29 from 6:00 until 7:30a.m. Winds over the course of the week averaged 1.9mph with gust peaking up to 19.0mph on July 31.

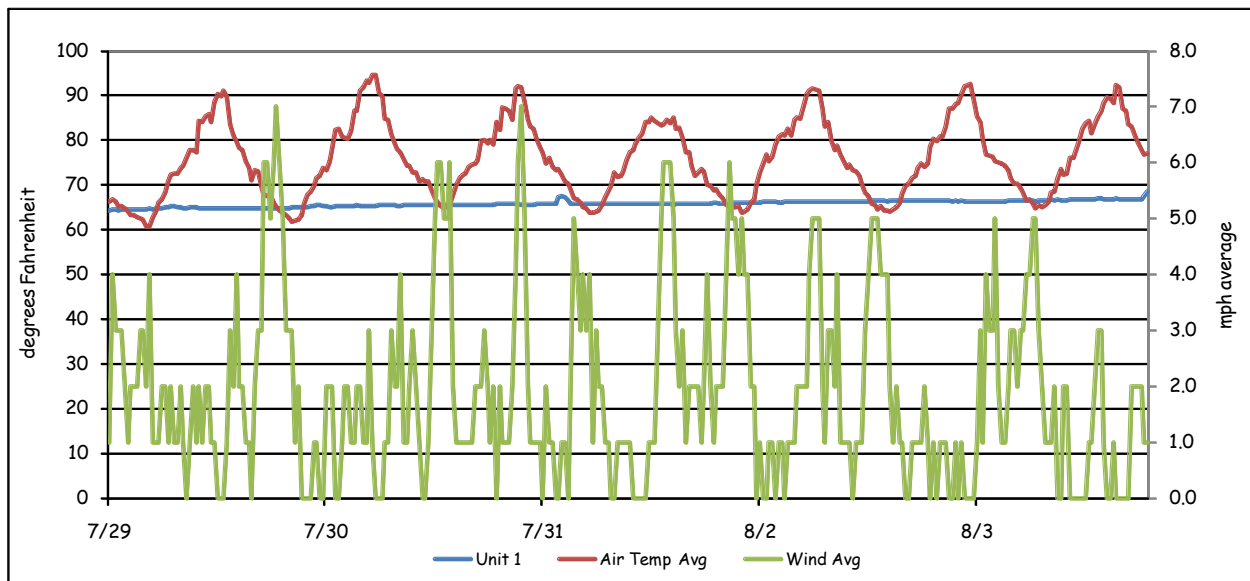


Figure 2: Weather and Forebay Water Temperature

There are 36 temperature probes located through out the Project and the JFF. These probes are set to record temperatures at 30-minute intervals. These probes are located at the following locations:

- 1) Forebay, near elevation 335 approximately 5 feet below the surface. These are attached to the pier noses in front of turbine units 1, 3, 5, 7, 8, 10, 12, and 14.
- 2) In front of spillbays 21, 17, 12, 7 and 2, approximately 5 feet below the surface. These probes are hung in the center of the spillbay, on the tailrace side.
- 3) Attached to the handrail in the center of the “B” turbine gateway slots, approximately 2 to 3 feet below the surface, in all 14 turbine units.
- 4) Tailwater locations are at turbine unit 1 and 14 (tailrace), and the wingwall of the navigation lock. These were placed 5 feet below the water surface.
- 5) The collection channel had probes installed below turbine units 12, 8 and past

- unit 1 at the beginning of the transition screen.
- 6) The barge transportation dock.
 - 7) Fish separator.
 - 8) Transport holding raceway #1 at a depth of 2 – 3 feet.

Forebay water temperatures (Table 2) peaked this week with 75.4°F on August 3 at 8:00p.m., in front of unit 12. The average was 68.1°F across the forebay. Gatewell water temperatures for all units combined averaged 67.0°F (Table 3). Gatewell temperatures peaked at 73.0°F on August 3 in unit 13 at 5:30p.m.

Table 2: Forebay Water Temperatures

	Daily Average								Daily Max
	1F	3F	5F	7F	8F	10F	12F	14F	
7/29/11	66.0	66.6	67.3	67.5	67.1	67.3	67.1	66.9	72.3
7/30/11	66.5	66.8	67.8	67.9	67.6	67.9	68.2	67.7	73.1
7/31/11	67.6	67.6	68.8	68.6	68.2	68.1	68.0	67.3	71.0
8/1/11	67.6	67.0	67.4	67.7	67.5	68.4	69.0	68.7	73.4
8/2/11	67.8	67.6	68.1	68.3	68.3	68.6	68.6	68.3	73.0
8/3/11	69.6	68.6	68.8	69.0	69.2	69.4	69.9	69.6	75.4
8/4/11	68.1	68.1	68.4	68.8	68.9	69.3	70.3	69.9	75.2
Weekly Average	67.6	67.5	68.1	68.3	68.1	68.4	68.7	68.3	75.4

Table 3: Gatewell Water Temperatures for Units 1, 7 & 14

	Daily Avg.			Daily Max.			Daily Min.		
	1	7	14	1	7	14	1	7	14
7/29/11	64.8	66.5	66.0	65.3	70.9	68.4	64.4	64.8	65.1
7/30/11	65.2	67.0	66.6	65.5	70.2	68.2	64.8	64.9	65.5
7/31/11	65.6	68.1	67.1	65.8	70.5	68.4	65.5	66.2	66.2
8/1/11	65.9	66.5	67.7	67.5	68.4	69.6	65.7	65.7	66.4
8/2/11	66.2	67.0	67.9	66.4	69.3	69.1	65.8	66.0	67.1
8/3/11	66.5	66.7	68.7	66.6	68.7	71.8	66.4	66.2	67.5
8/4/11	66.7	67.0	68.6	68.5	70.2	70.3	66.4	66.4	66.9
Weekly Average	65.8	67.0	67.5	66.5	69.7	69.4	65.6	65.7	66.4

The differences in temperatures between the gatewell at unit 1 and the gatewell at unit 14 are illustrated in Figure 3. This graph takes the temperature in the gatewell and subtracts unit 14 from that gatewell (unit 1 – 14). It then continues down the powerhouse subtracting unit 14 from each consecutive unit. A negative number indicates that unit 14 was the warmer unit. Conversely, a positive number indicates that unit 1 was warmer. This shows the reader the amount of variance from one end of the powerhouse to the other that can be seen through out a 24-hour period.

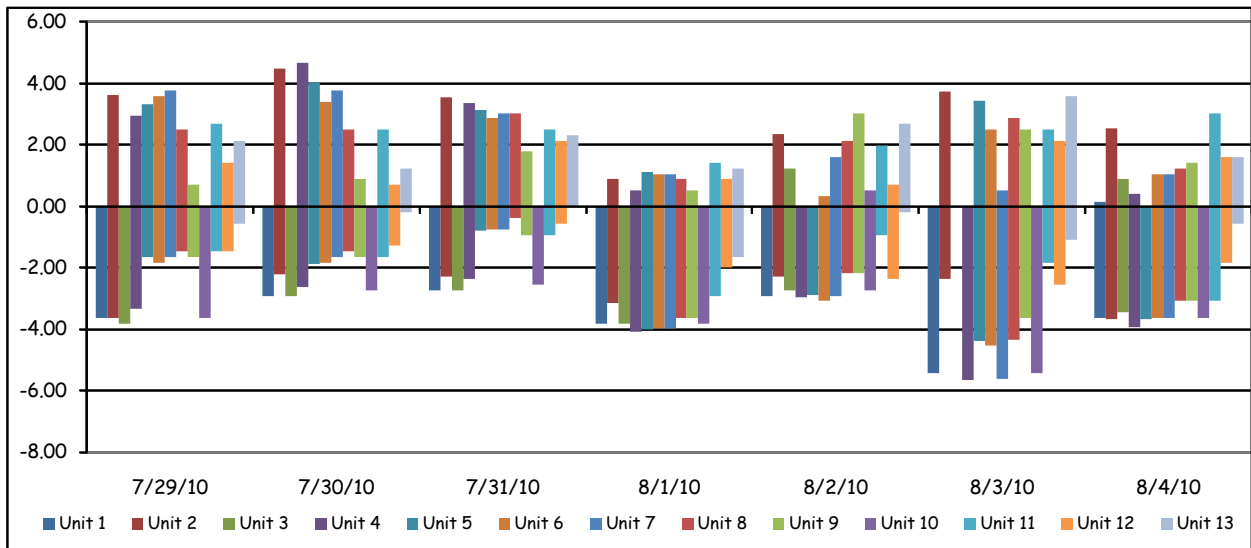


Figure 3: Gatewell Temperature Differentials for Units 1 - 14

Forebay differentials (Figure 4) are calculated by taking the forebay temperature and subtracting the corresponding gatewell temperature from it (1F – unit 1). A negative number would indicate that the gatewell was warmer. Conversely, a positive number indicates that the forebay is warmer. Again, this shows the reader the amount of variance that can be seen between the forebay and the gatewell through out a 24-hour period.

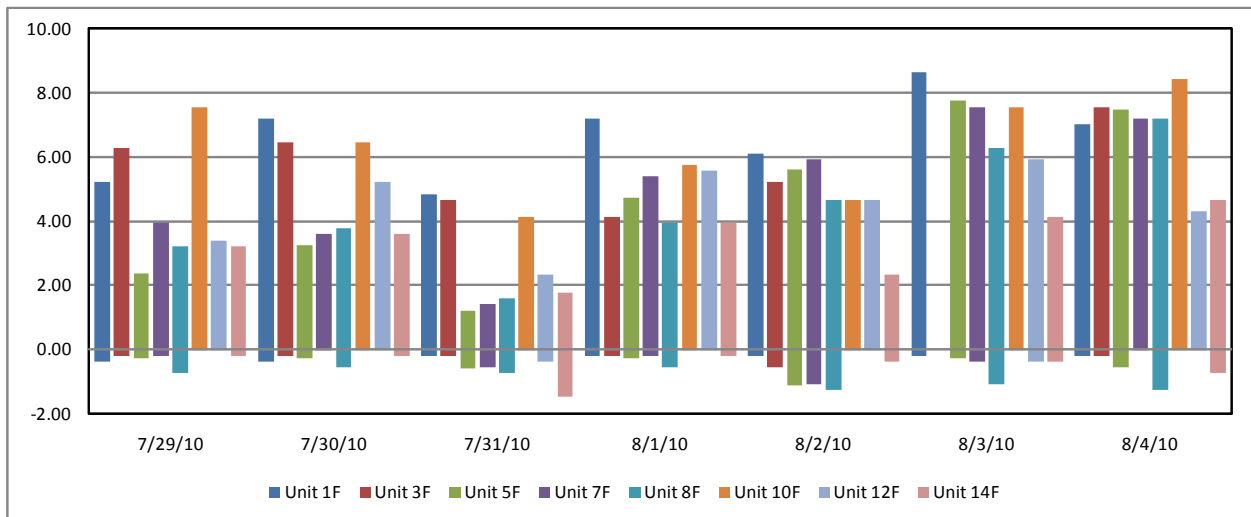


Figure 4: Temperature Differentials Between Forebay and Gatewell

Average water temperature in the collection channel was 67.4°F (Table 4) for the week. A maximum temperature of 71.8°F was recorded August 3 at 6:30 and at 7:30p.m., below Unit 12. Temperatures at the separator averaged 66.8°F for the week with a maximum daily temperature of 69.1°F (Table 5). The temperature in raceway #1 averaged 67.0°F with a high of 69.3°F August 3 at 8:30pm.

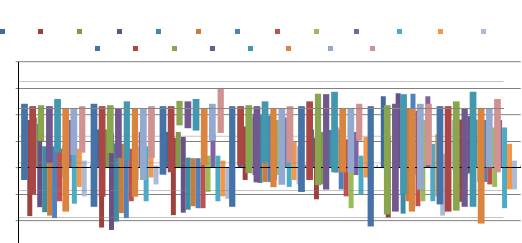


Table 4: Collection Channel Average and Maximum Water Temperatures

	Daily Avg.			Daily Max.		
	1	8	12	1	8	12
7/29/11	65.8	66.3	66.5	67.6	68.7	69.4
7/30/11	66.2	66.6	67.0	68.2	68.4	69.1
7/31/11	67.1	67.5	67.7	68.2	68.4	68.7
8/1/11	66.5	67.3	67.9	67.6	68.7	69.8
8/2/11	66.9	67.8	68.0	67.6	68.7	69.1
8/3/11	67.4	68.3	69.0	69.1	70.2	71.8
8/4/11	67.5	68.3	69.0	68.7	69.6	71.1
Weekly Average	66.8	67.4	67.9	68.2	69.0	69.9

Table 5: Raceway, Barge Dock and Separator Maximum and Average Water Temperatures

	Daily Avg.			Daily Max.		
	Separator	Raceway 1	Dock	Separator	Raceway 1	Dock
7/29/11	65.8	66.0	64.9	67.8	67.8	66.0
7/30/11	66.3	66.4	65.4	68.4	68.4	66.3
7/31/11	67.1	67.3	66.0	68.2	68.4	66.6
8/1/11	66.6	66.7	66.1	67.6	67.6	67.2
8/2/11	67.0	67.1	66.4	67.8	67.8	67.2
8/3/11	67.4	67.6	66.8	69.1	69.3	67.2
8/4/11	67.5	67.6	67.0	68.9	68.9	68.1
Average	66.8	67.0	66.1	68.3	68.3	67.0

Collection channel differentials (Table 6) are calculated by taking the forebay temperature and subtracting the collection channel temperature from it at the three corresponding points. This is an average of the variances between the forebay and the collection channel. A negative number indicates that the collection channel was warmer. A positive number indicates the forebay was warmer. The graph (Figure 5) shows the variance through out the week.

Table 6: Average Differences between Forebay and Collection Channel

	1	8	12
7/29/11	0.2	0.8	0.6
7/30/11	0.3	1.0	1.2
7/31/11	0.5	0.7	0.4
8/1/11	1.0	0.2	1.1
8/2/11	0.9	0.5	0.6
8/3/11	2.2	0.9	0.9
8/4/11	0.6	0.8	1.2
Average	0.8	0.7	0.9
Maximum	6.7	5.0	4.5
Minimum	-2.5	-2.3	-2.0

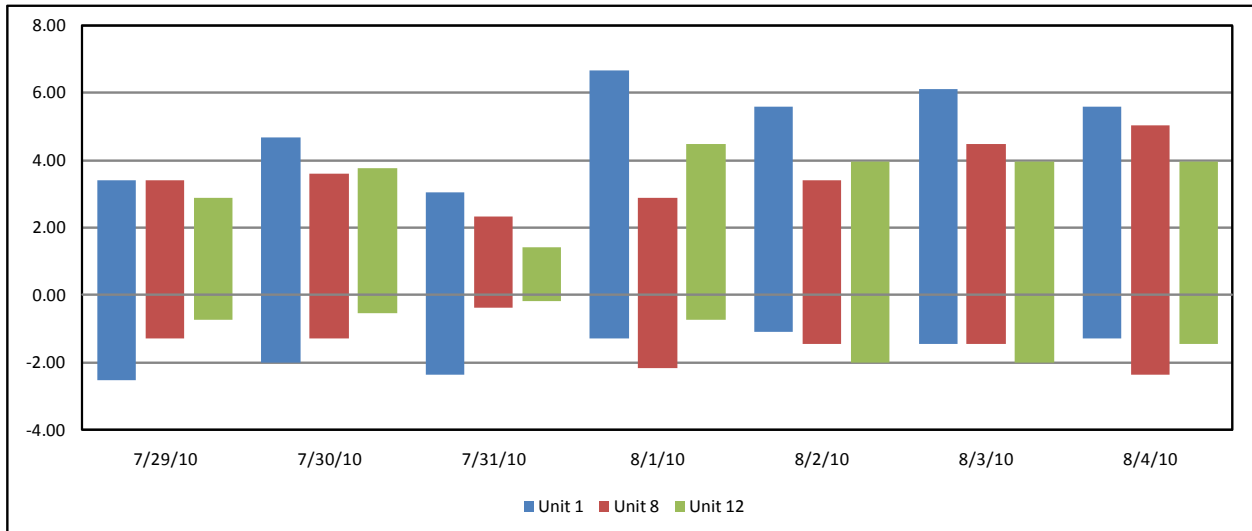


Figure 5: Temperature Differentials Between Forebay and Collection Channel

• • •

