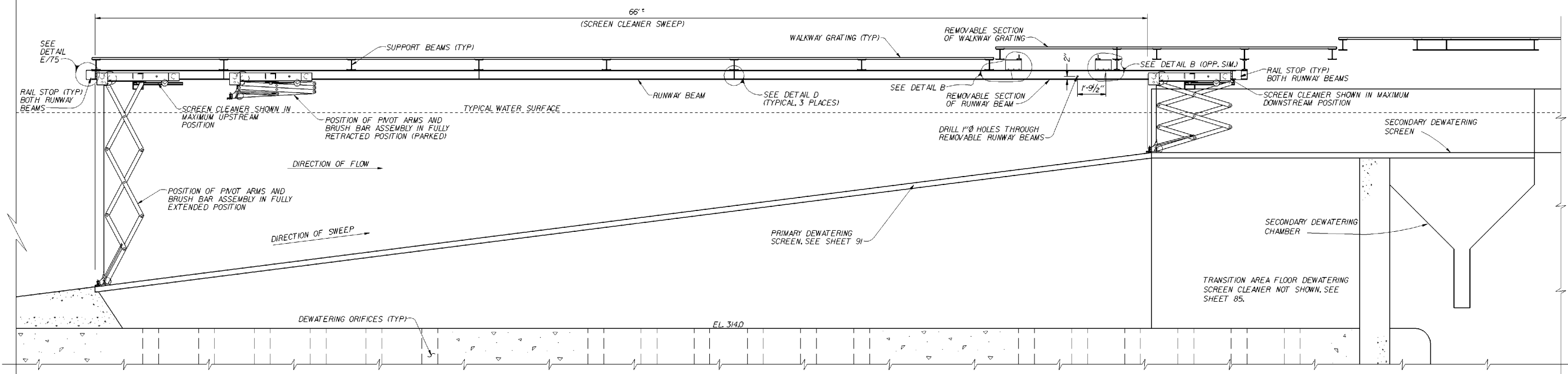


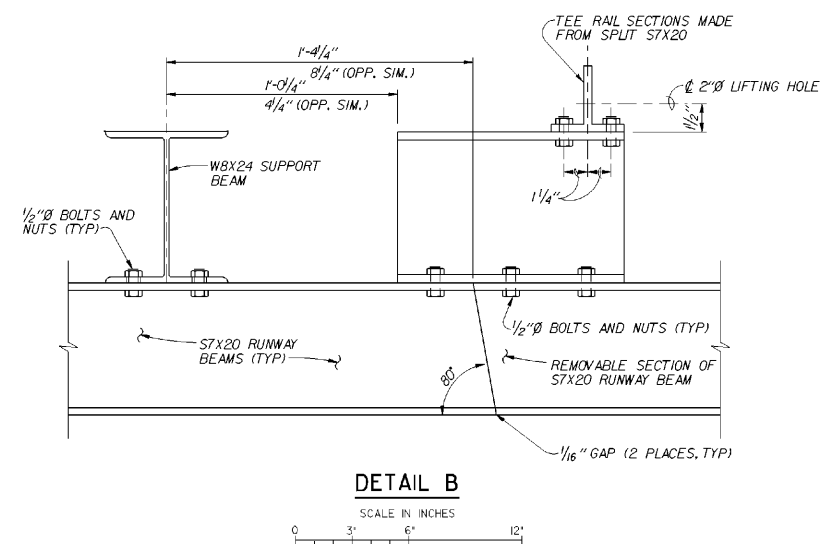
PLAN

SCALE IN FEET
12" 0 2' 4' 6'



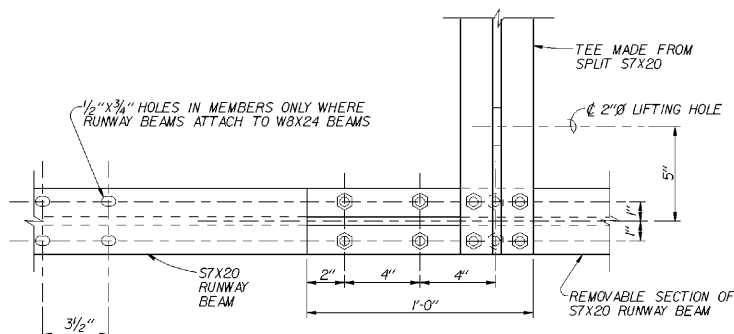
SECTION A

SCALE IN FEET
12" 0 2' 4' 6'



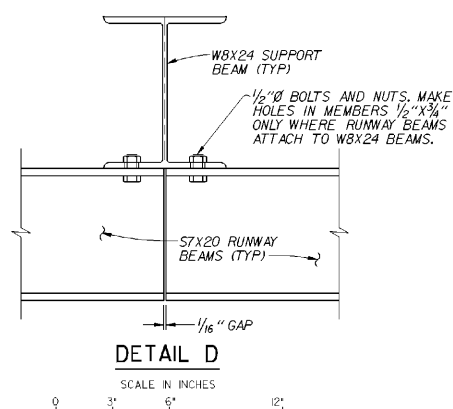
DETAIL B

SCALE IN INCHES
0 3' 6' 12'



DETAIL C

SCALE IN INCHES
0 3' 6' 12'



DETAIL D

SCALE IN INCHES
0 3' 6' 12'

- NOTES:
- SCREEN CLEANER SHOWN HERE WILL BE SYNCHRONIZED WITH THE ONE SHOWN ON SHEET 85 TO PREVENT INTERFERENCE.
 - SEE SHEET 98J FOR ELECTRICAL DETAILS.

REVISION	DATE	DESCRIPTION	CHKD.	APPR.
A	95 SEPT	AS CONSTRUCTED		

**U. S. ARMY ENGINEER DISTRICT
WALLA WALLA, WASHINGTON**

MCNARY LOCK AND DAM
COLUMBIA RIVER, OREGON AND WASHINGTON

PERMANENT JUVENILE FISH FACILITIES
PRIMARY DEWATERING
RECTANGULAR AREA FLOOR SCREEN CLEANER
PLAN AND ELEVATION

DESIGNED BY: K. RENSHAW
DRAWN BY: K. RENSHAW
CHECKED BY: S. ROSS
SUPERVISOR:
SUBMITTED: _____ APPROVED: _____ DATE: 92 JUN 17

SCALE AS SHOWN INV. NO. 92-B-32
SHEET NO. 81 FILE NO. MDF-1-3-9/29

COMPUTER AIDED DESIGN & DRAFTING

DESIGN FILENAME: \usr2\cad\m\j\m\fd\el.dgn
PLOTING TIME: 0:45:00
PLOTING METHOD: PLOTTER

VALUE ENGINEERING PAYS

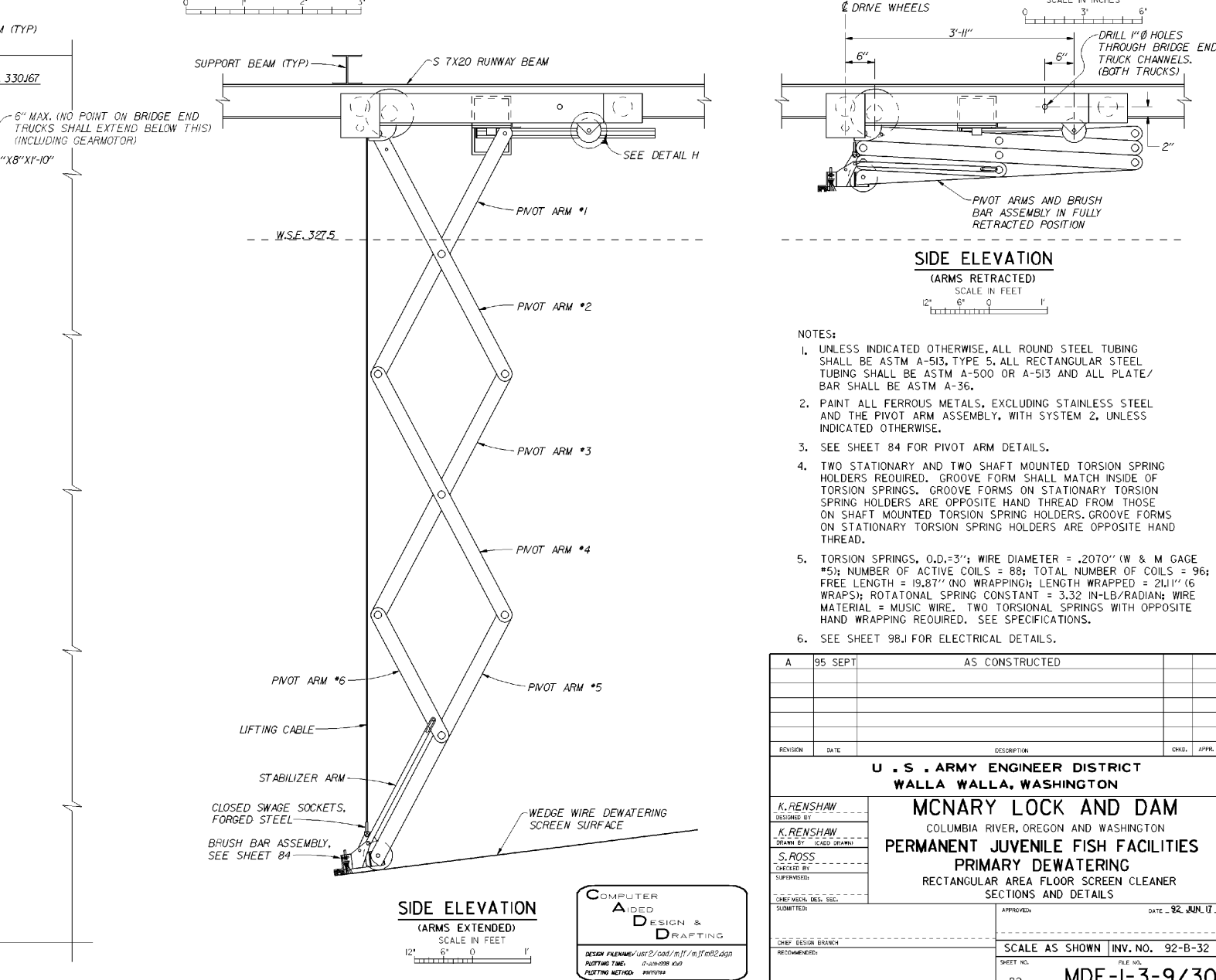
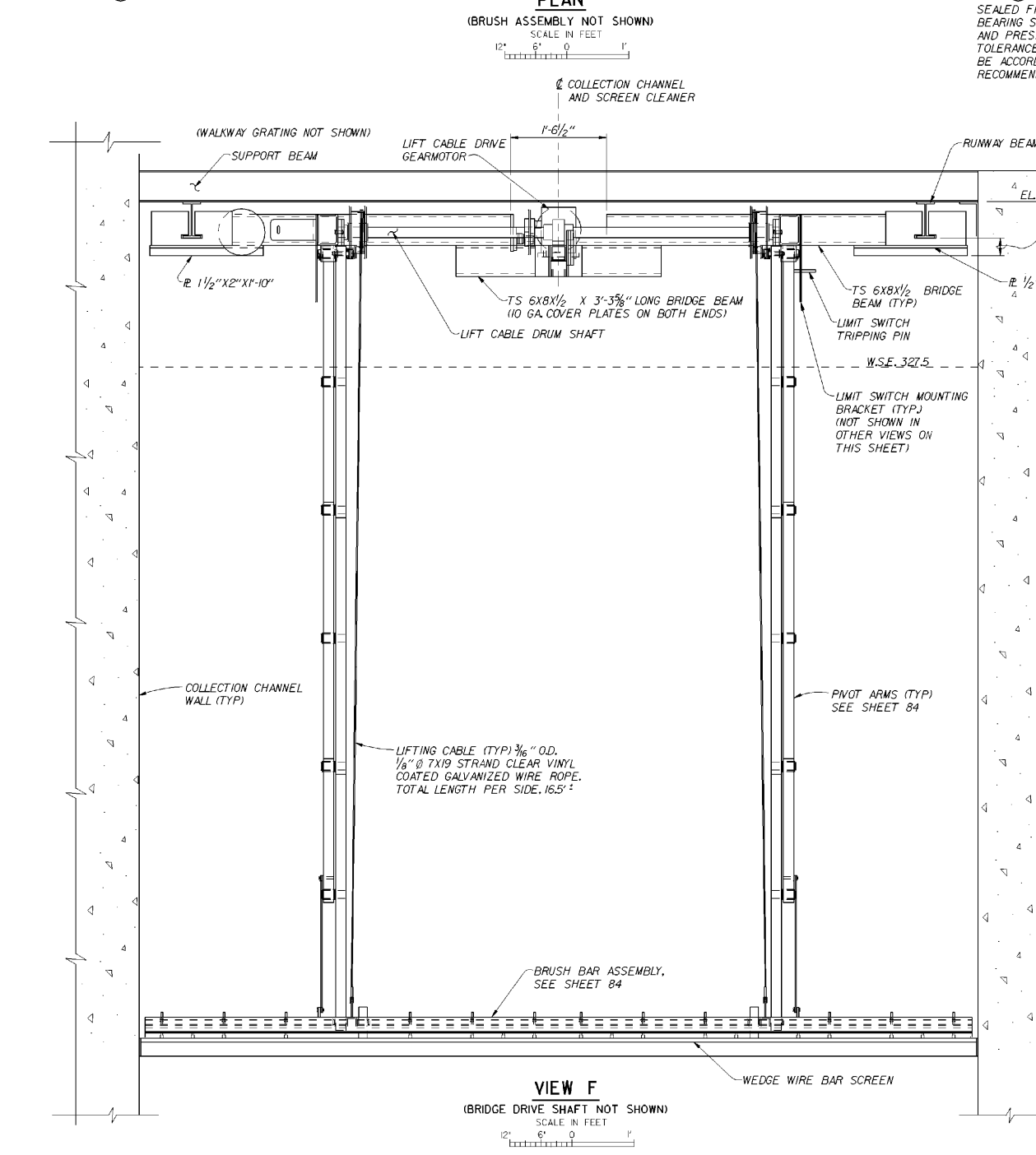
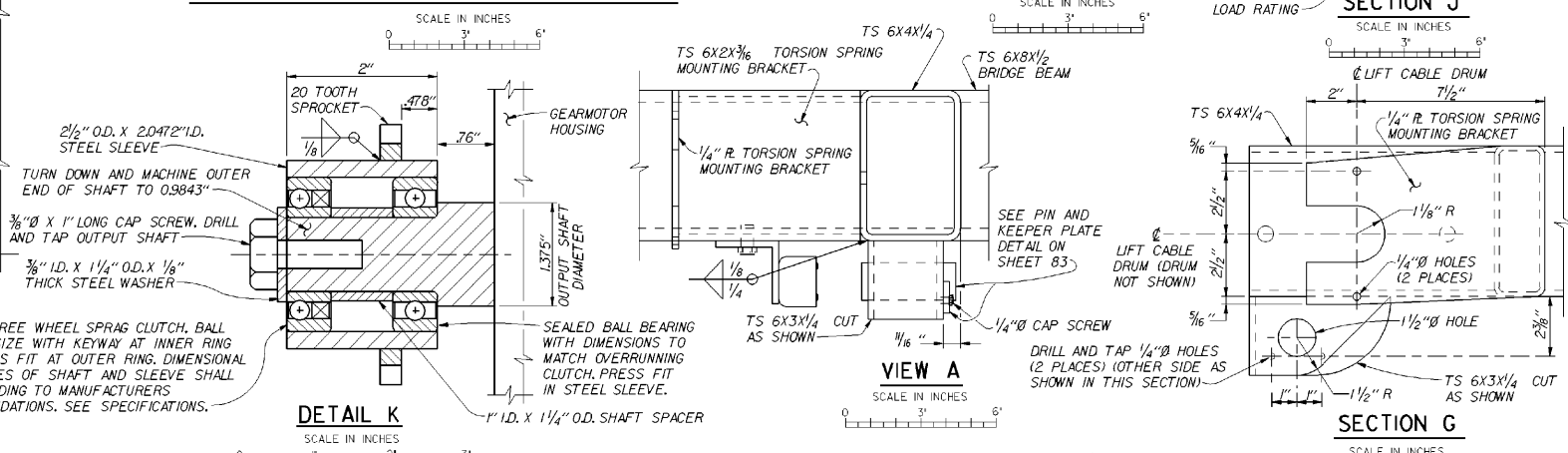
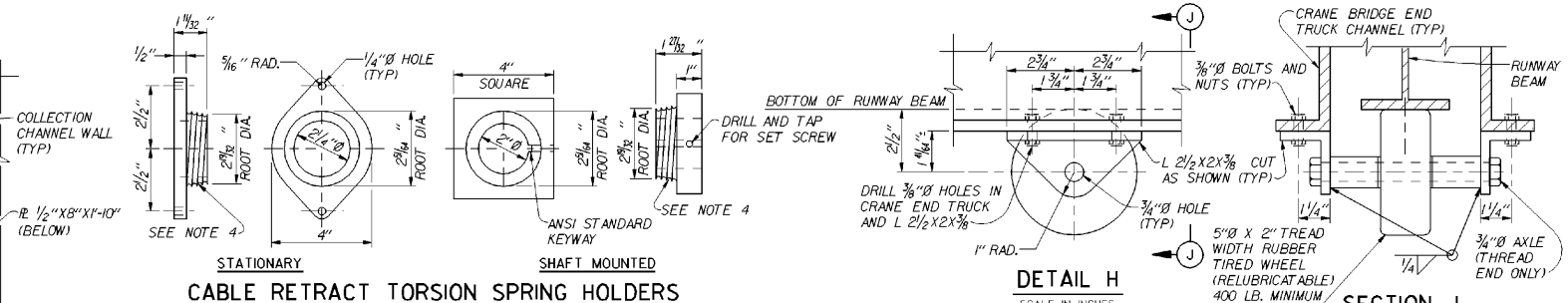
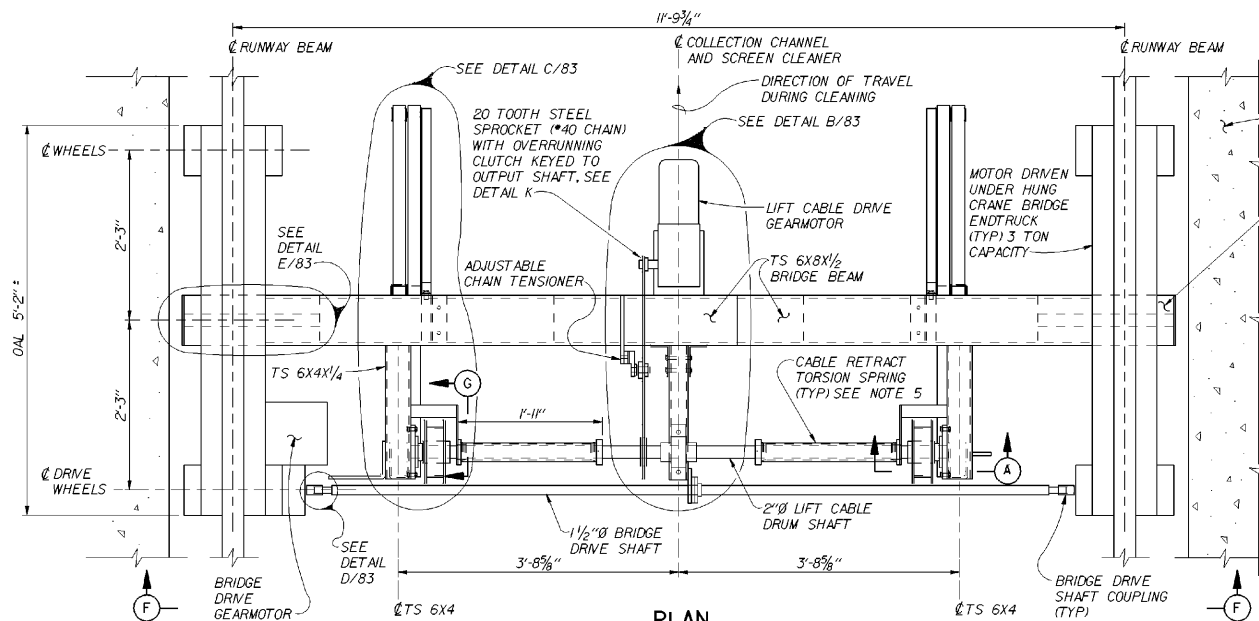
REFERENCE FILES FOR CONTRACT DRWGS
M.J.F.BLK.A
M.J.F.M82.DGN.RE,RP,RED,PD

REFERENCE FILES ATTACHED
M.J.F.BLK.A M.N66.DGN.PLAN.ELV
M.N64.DGN.S M.J.F.M82.DGN.RB
M.J.F.M82.DGN.RE,RP,RED,PD,RRF

LEVELS FOR CONTRACT DRWGS
1-62

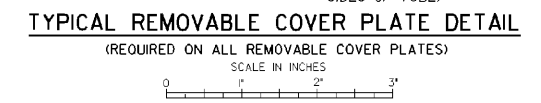
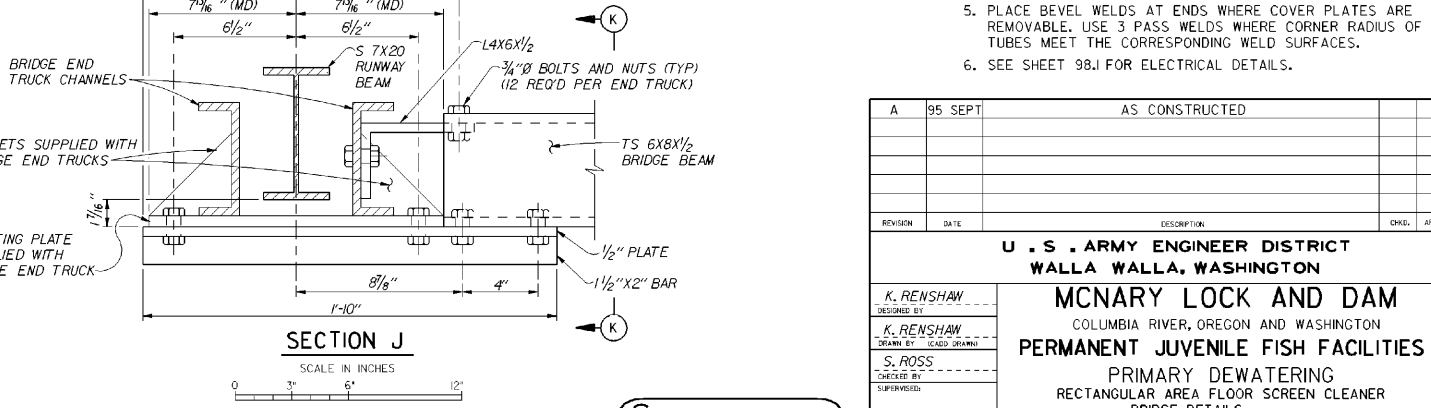
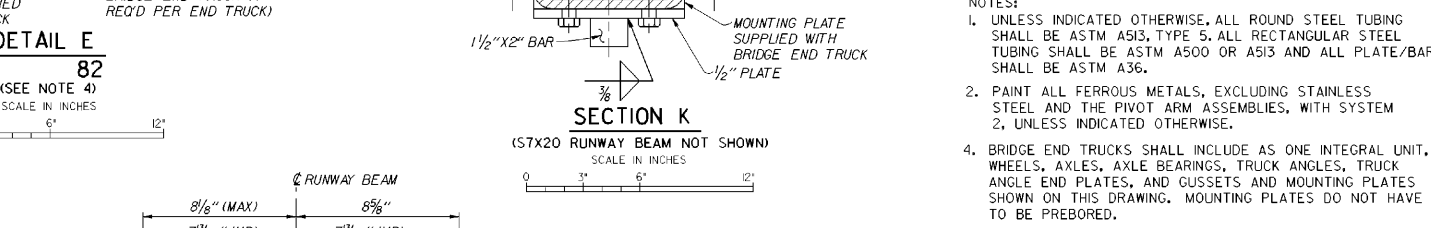
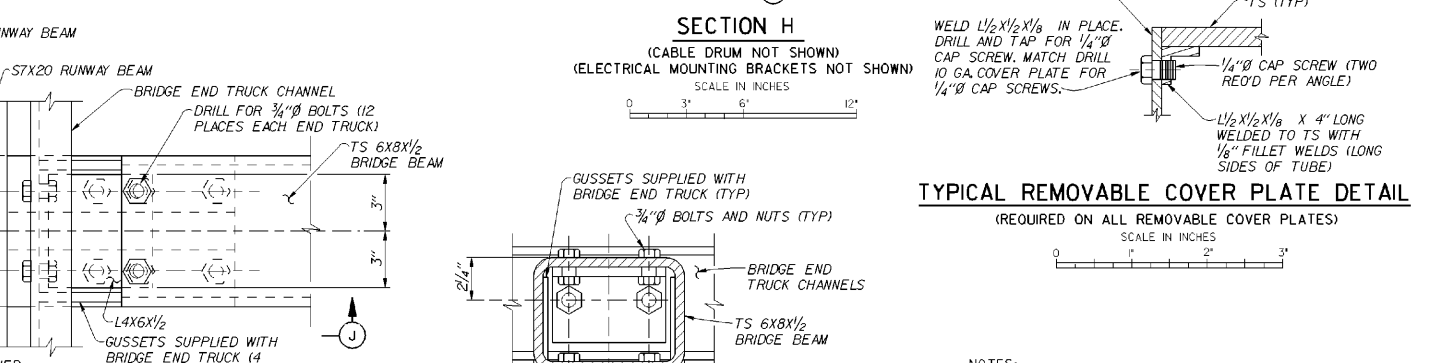
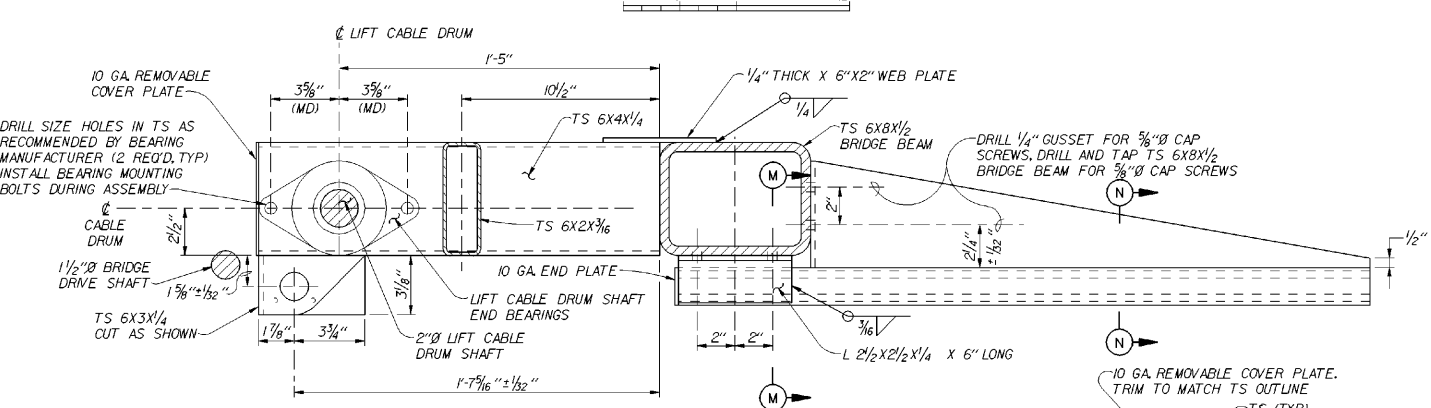
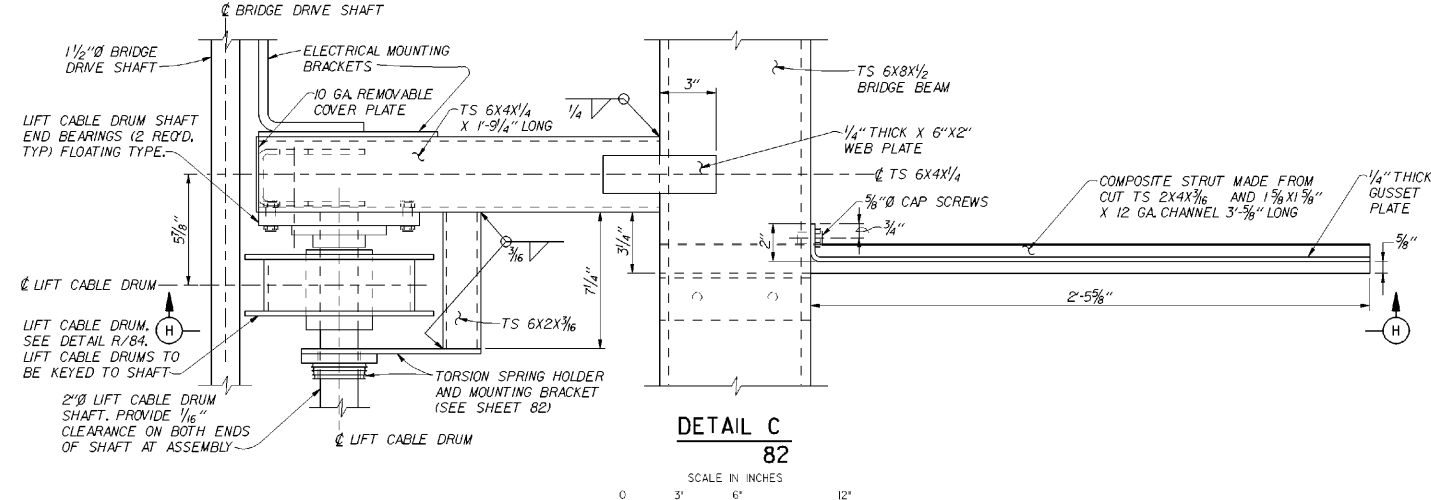
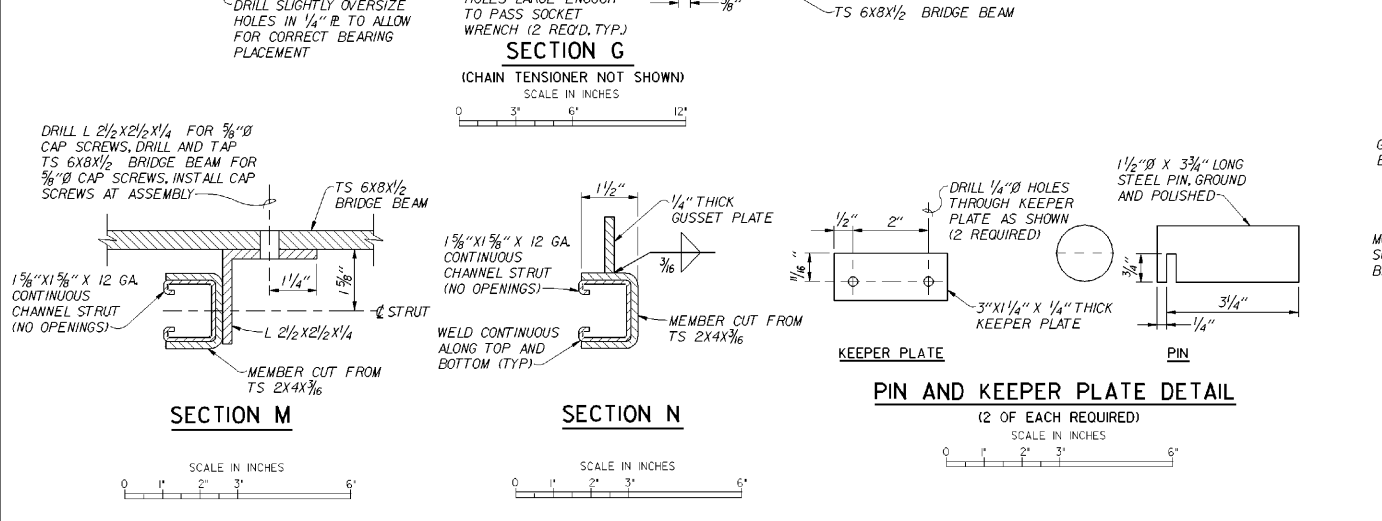
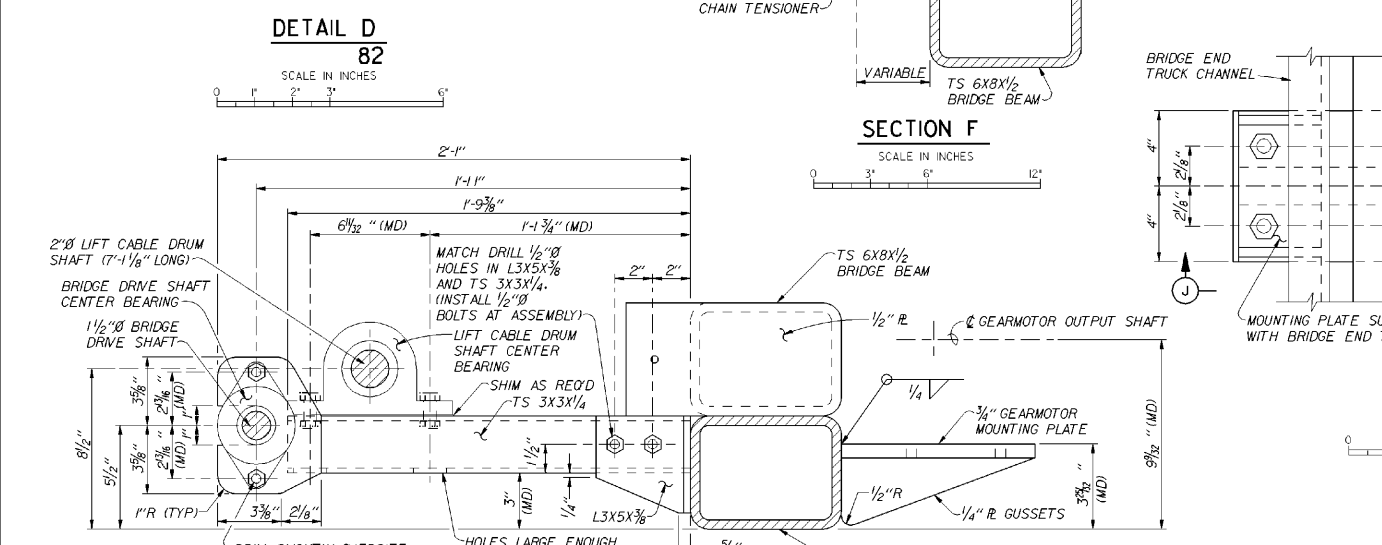
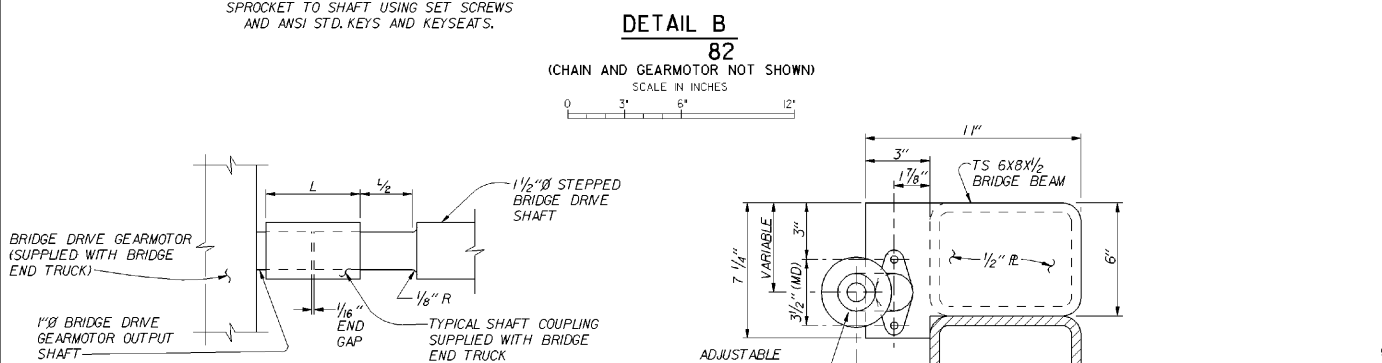
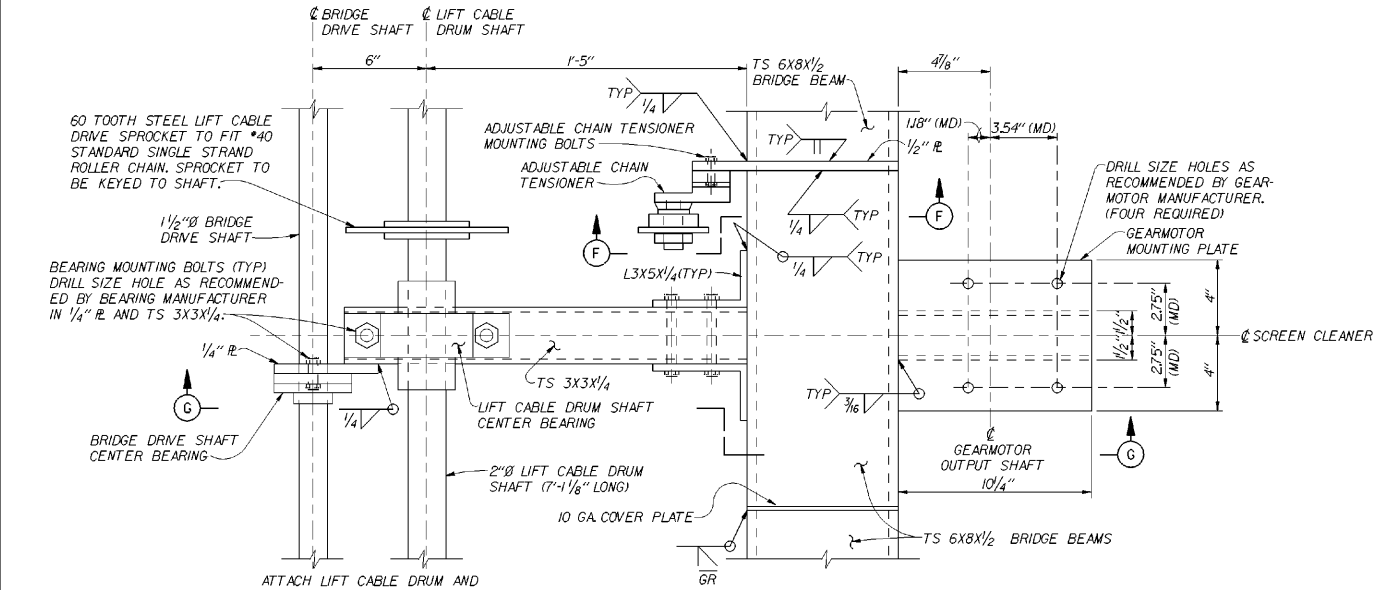
SCALE
3/8"=1'-0"

CONT. NO. 92-C-50 VOL. I



- NOTES:**
- UNLESS INDICATED OTHERWISE, ALL ROUND STEEL TUBING SHALL BE ASTM A-513, TYPE 5. ALL RECTANGULAR STEEL TUBING SHALL BE ASTM A-500 OR A-513 AND ALL PLATE/BAR SHALL BE ASTM A-36.
 - PAINT ALL FERROUS METALS, EXCLUDING STAINLESS STEEL AND THE PIVOT ARM ASSEMBLY, WITH SYSTEM 2, UNLESS INDICATED OTHERWISE.
 - SEE SHEET 84 FOR PIVOT ARM DETAILS.
 - TWO STATIONARY AND TWO SHAFT MOUNTED TORSION SPRING HOLDERS REQUIRED. GROOVE FORM SHALL MATCH INSIDE OF TORSION SPRINGS. GROOVE FORMS ON STATIONARY TORSION SPRING HOLDERS ARE OPPOSITE HAND THREAD FROM THOSE ON SHAFT MOUNTED TORSION SPRING HOLDERS. GROOVE FORMS ON STATIONARY TORSION SPRING HOLDERS ARE OPPOSITE HAND THREAD.
 - TORSION SPRINGS, O.D.=3'; WIRE DIAMETER = .2070" (W & M GAGE #5); NUMBER OF ACTIVE COILS = 88; TOTAL NUMBER OF COILS = 96; FREE LENGTH = 19.87" (NO WRAPPING); LENGTH WRAPPED = 211" (6 WRAPS); ROTATIONAL SPRING CONSTANT = 3.32 IN-LB/RADIANS; WIRE MATERIAL = MUSIC WIRE. TWO TORSIONAL SPRINGS WITH OPPOSITE HAND WRAPPING REQUIRED. SEE SPECIFICATIONS.
 - SEE SHEET 98.1 FOR ELECTRICAL DETAILS.

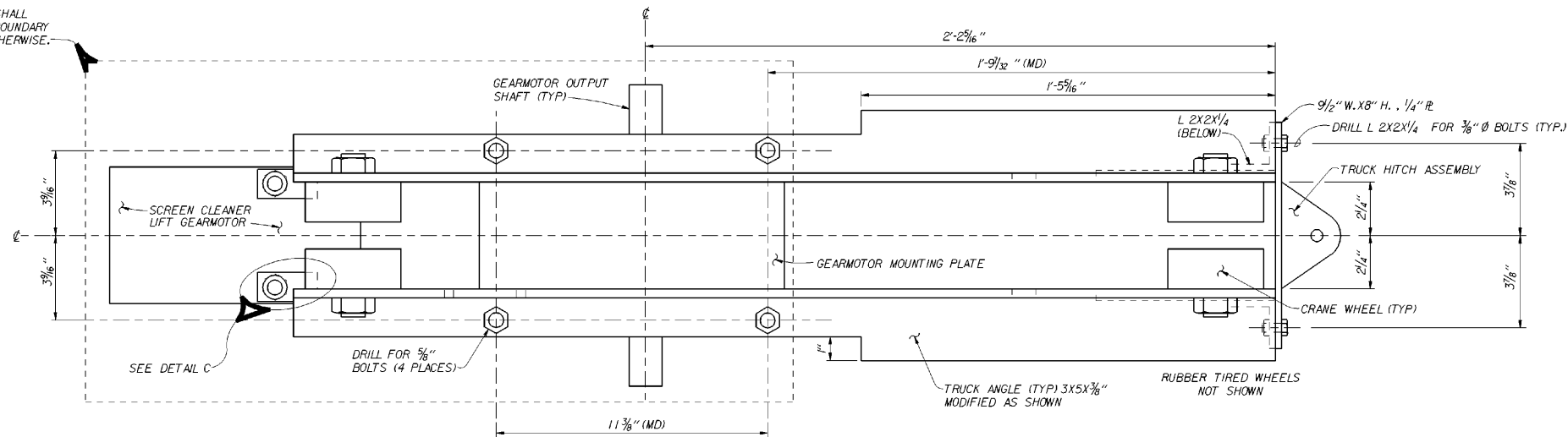
A	95 SEPT	AS CONSTRUCTED		
REVISION	DATE	DESCRIPTION	CHKD.	APPR.
U. S. ARMY ENGINEER DISTRICT WALLA WALLA, WASHINGTON MCNARY LOCK AND DAM COLUMBIA RIVER, OREGON AND WASHINGTON PERMANENT JUVENILE FISH FACILITIES PRIMARY DEWATERING RECTANGULAR AREA FLOOR SCREEN CLEANER SECTIONS AND DETAILS				
DESIGNED BY K. RENSHAW		DATE: 92 JUN 17		
DRAWN BY K. RENSHAW		SCALE AS SHOWN INV. NO. 92-B-32		
CHECKED BY S. ROSS		SHEET NO. 82		
SUPERVISED BY		FILE NO. MDF-1-3-9/30		
CHIEF DESIGN ENGINEER		APPROVED		
RECOMMENDED BY		DATE		



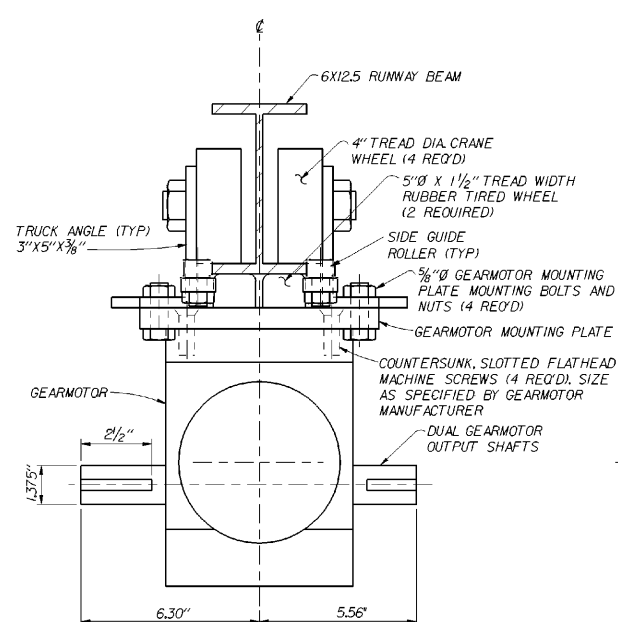
- NOTES:**
- UNLESS INDICATED OTHERWISE, ALL ROUND STEEL TUBING SHALL BE ASTM A513, TYPE 5. ALL RECTANGULAR STEEL TUBING SHALL BE ASTM A500 OR A513 AND ALL PLATE/BAR SHALL BE ASTM A36.
 - PAINT ALL FERROUS METALS, EXCLUDING STAINLESS STEEL AND THE PIVOT ARM ASSEMBLIES, WITH SYSTEM 2, UNLESS INDICATED OTHERWISE.
 - BRIDGE END TRUCKS SHALL INCLUDE AS ONE INTEGRAL UNIT, WHEELS, AXLES, AXLE BEARINGS, TRUCK ANGLES, TRUCK ANGLE END PLATES, AND GUSSETS AND MOUNTING PLATES SHOWN ON THIS DRAWING. MOUNTING PLATES DO NOT HAVE TO BE PREBORED.
 - PLACE BEVEL WELDS AT ENDS WHERE COVER PLATES ARE REMOVABLE. USE 3 PASS WELDS WHERE CORNER RADIUS OF TUBES MEET THE CORRESPONDING WELD SURFACES.
 - SEE SHEET 98.J FOR ELECTRICAL DETAILS.

A	95 SEPT	AS CONSTRUCTED		
REVISION	DATE	DESCRIPTION	CHKD.	APPR.
U. S. ARMY ENGINEER DISTRICT WALLA WALLA, WASHINGTON MCNARY LOCK AND DAM COLUMBIA RIVER, OREGON AND WASHINGTON PERMANENT JUVENILE FISH FACILITIES PRIMARY DEWATERING RECTANGULAR AREA FLOOR SCREEN CLEANER BRIDGE DETAILS				
DESIGNED BY K. RENSHAW		DATE: 92 JUN 17		
CHECKED BY K. RENSHAW		SCALE AS SHOWN INV. NO. 92-B-32		
SUPERVISOR S. ROSS		SHEET NO. 83		
SUBMITTED		FILE NO. MDF-1-3-9/31		

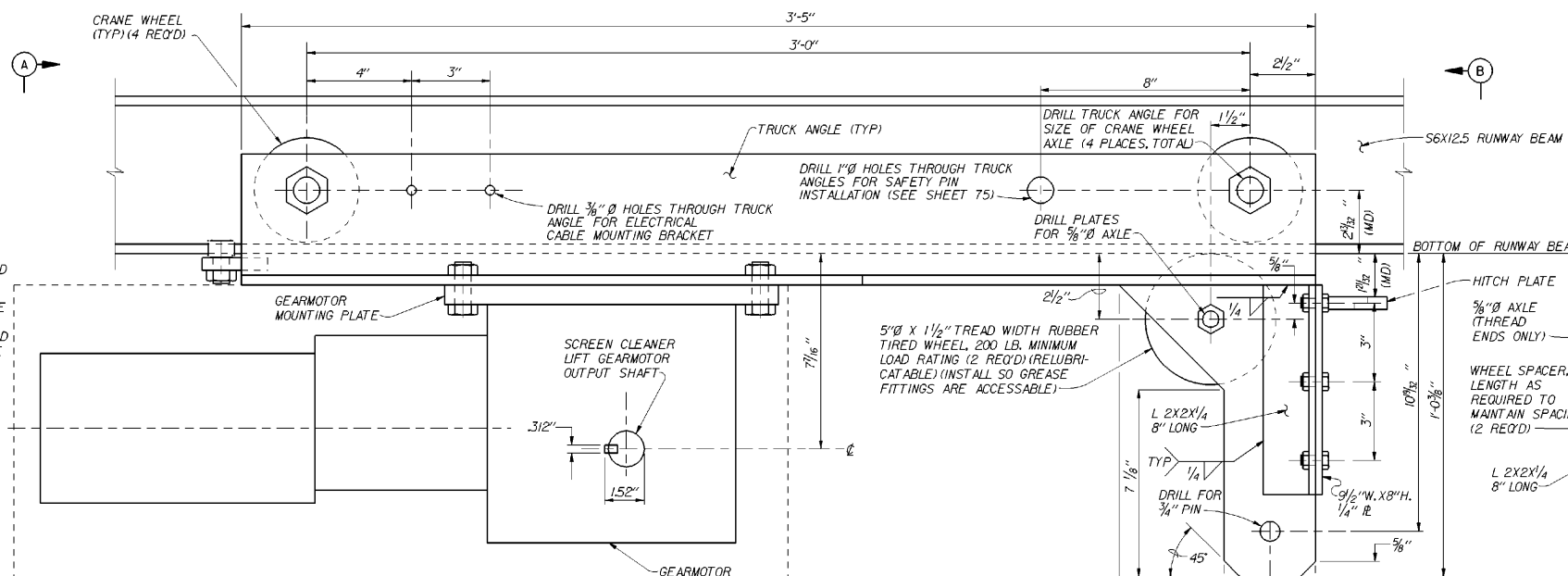
GEARMOTOR OUTLINE SHALL REMAIN INSIDE THIS BOUNDARY UNLESS APPROVED OTHERWISE.



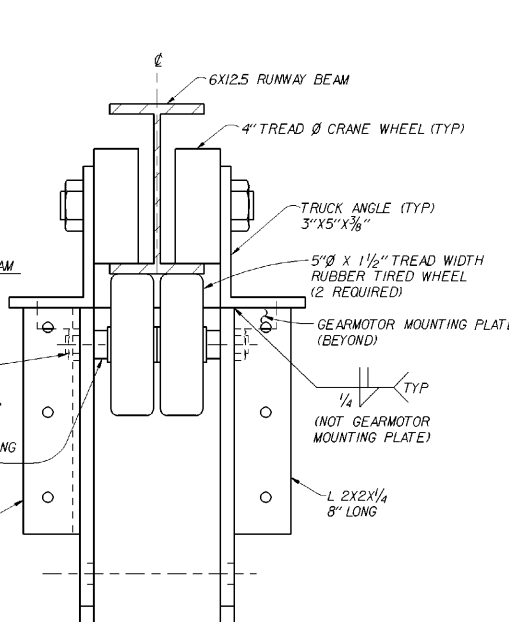
TRUCK PLAN (S6X12.5 RUNWAY BEAM NOT SHOWN)



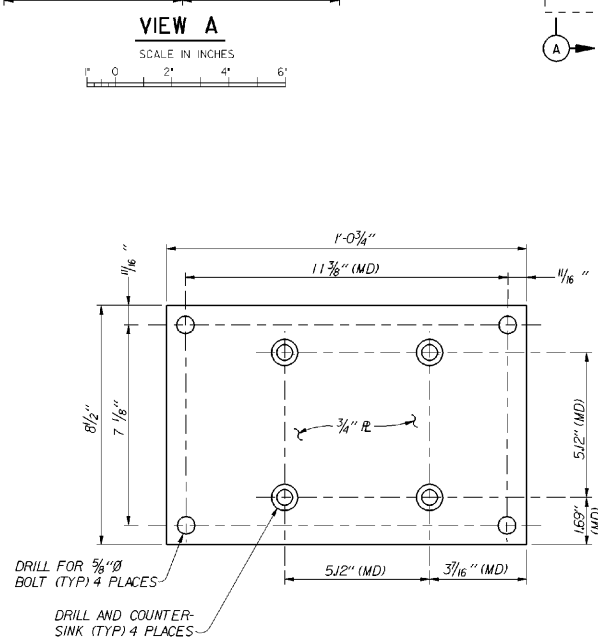
VIEW A



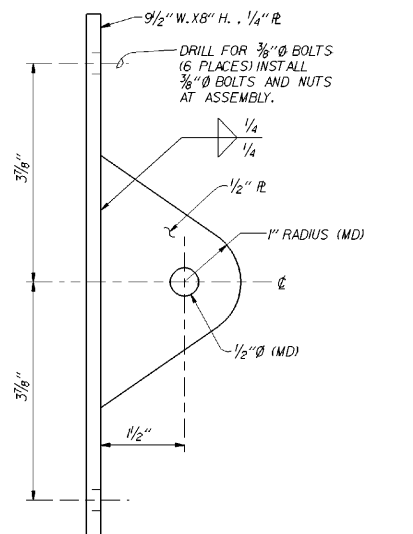
TRUCK SIDE ELEVATION



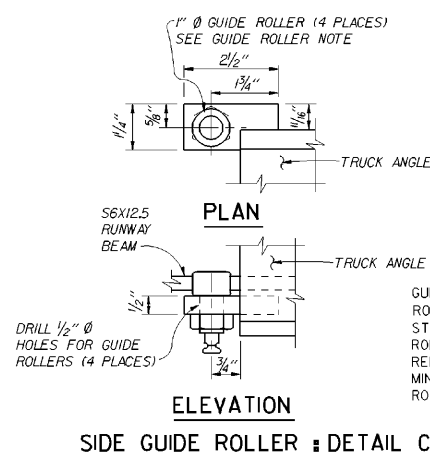
VIEW B



GEARMOTOR MOUNTING PLATE



TRUCK HITCH DETAIL



SIDE GUIDE ROLLER - DETAIL C

COMPUTER AIDED DESIGN & DRAFTING

DESIGN FILENAME: L:\P\001\m\11\m11\ref\design
PLOTTER TYPE: PLOTTER
PLOTTER METHOD: PLOTTER

NOTE: SEE SHEET 85 FOR NUMBERED NOTES.

REVISION	DATE	DESCRIPTION	CHKD.	APPR.
A	95 SEPT	AS CONSTRUCTED		

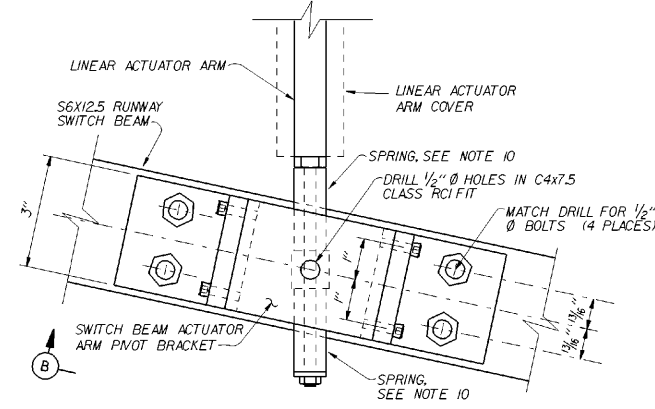
U. S. ARMY ENGINEER DISTRICT
WALLA WALLA, WASHINGTON

MCNARY LOCK AND DAM
COLUMBIA RIVER, OREGON AND WASHINGTON

PERMANENT JUVENILE FISH FACILITIES
PRIMARY DEWATERING
TRANSITION AREA FLOOR SCREEN CLEANER
TRUCK DETAILS

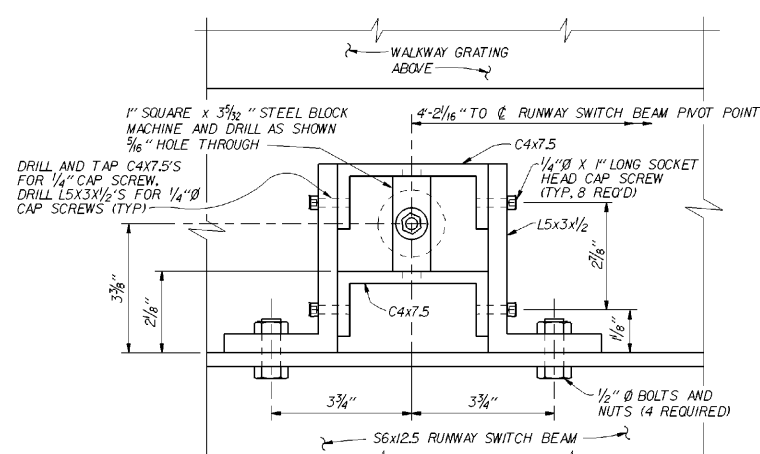
DESIGNED BY: K. RENSHAW
DRAWN BY: S. ROSS
CHECKED BY: S. ROSS
SUBMITTED: []
APPROVED: [] DATE: 92 JUN 17

SCALE AS SHOWN INV. NO. 92-B-32
SHEET NO. 86 FILE NO. MDF-1-3-9/34



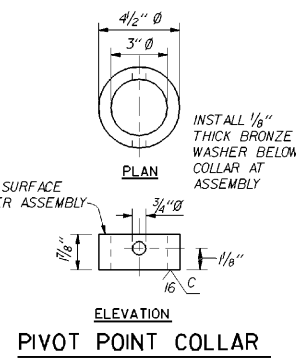
DETAIL A 85

SCALE IN INCHES



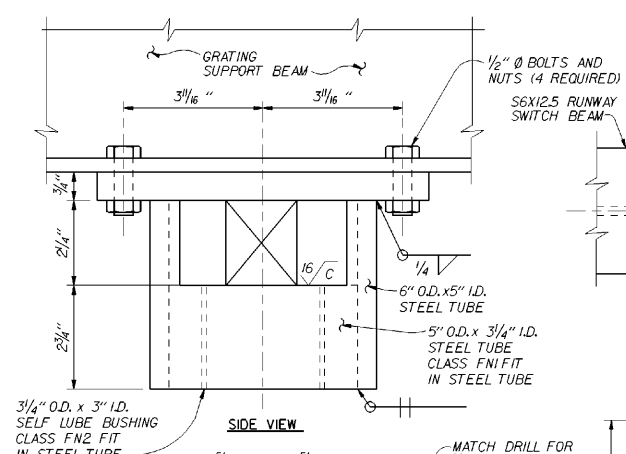
VIEW B

SCALE IN INCHES



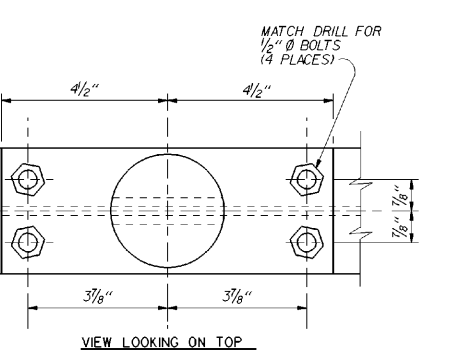
PIVOT POINT COLLAR

SCALE IN INCHES



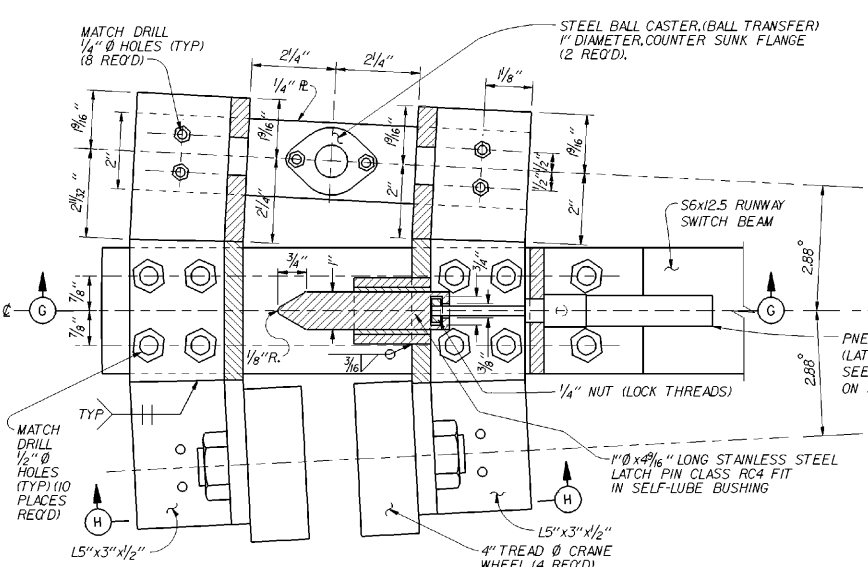
SIDE VIEW

SCALE IN INCHES



VIEW LOOKING ON TOP

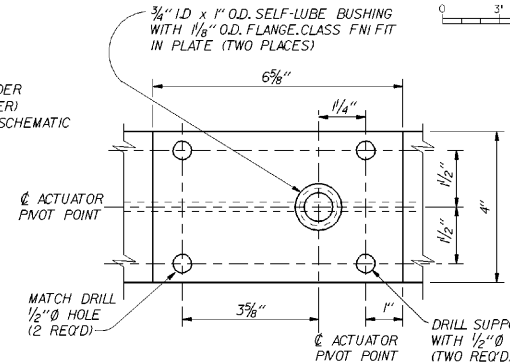
SCALE IN INCHES



PARTIAL SECTION F

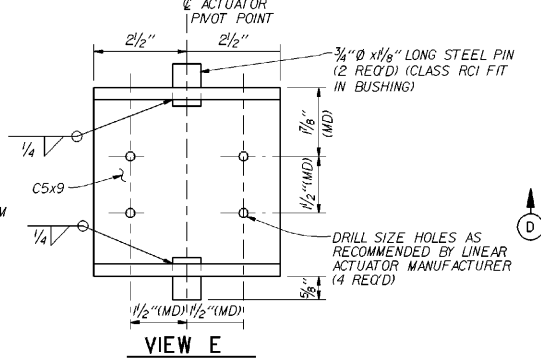
(SYMMETRICAL ABOUT CENTER LINE) (SWITCH BEAM SUPPORT RAIL NOT SHOWN)

SCALE IN INCHES



SECTION D

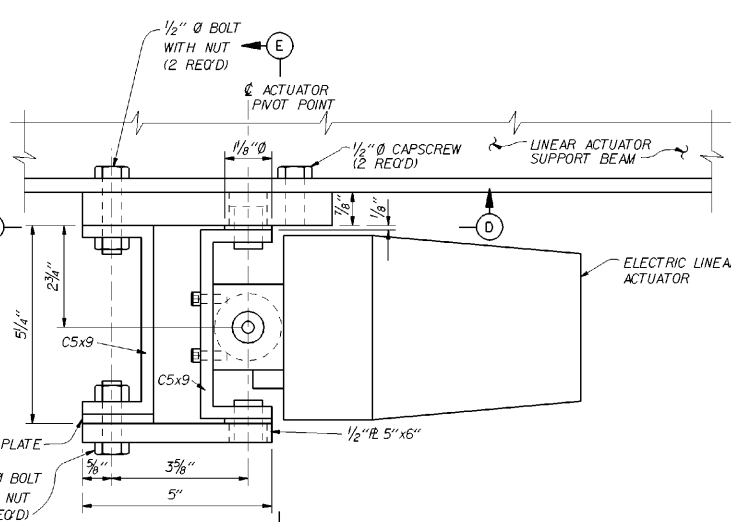
SCALE IN INCHES



VIEW E

ELECTRIC ACTUATOR NOT SHOWN

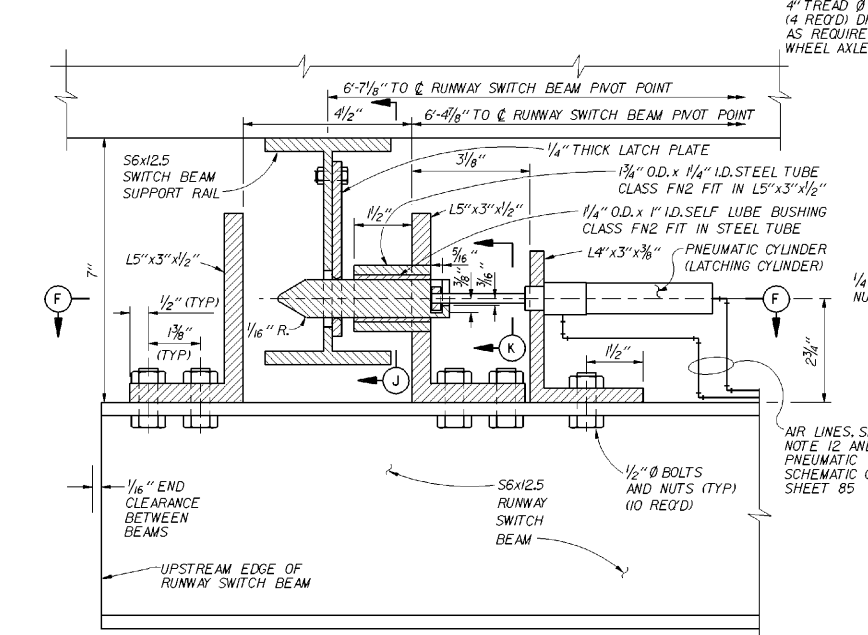
SCALE IN INCHES



VIEW C 85

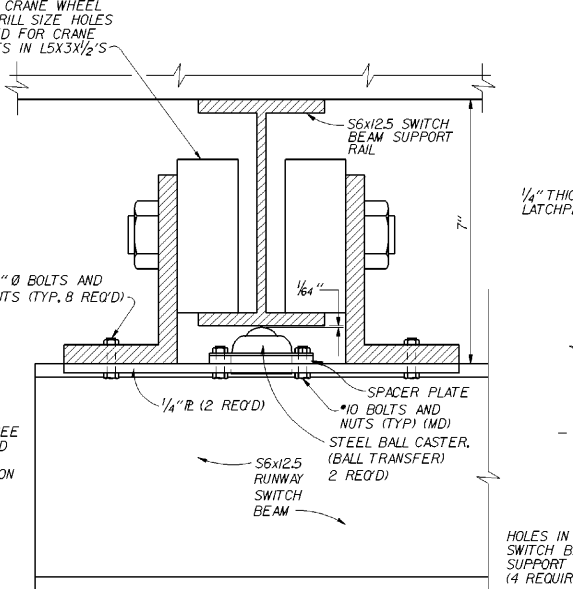
SCALE IN INCHES

NOTE: SEE SHEET 85 FOR NUMBERED NOTES.



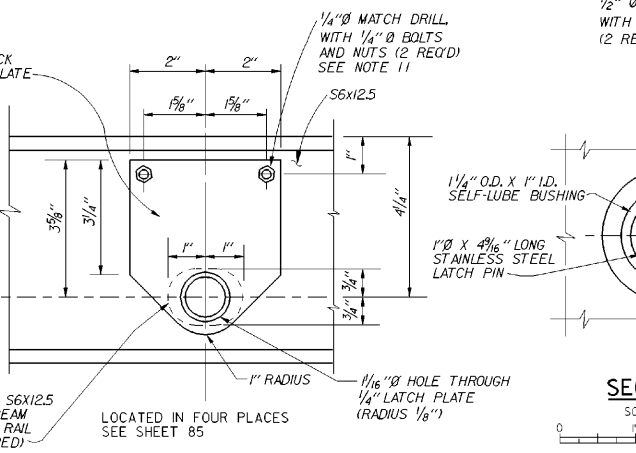
PARTIAL SECTION G

SCALE IN INCHES



SECTION H

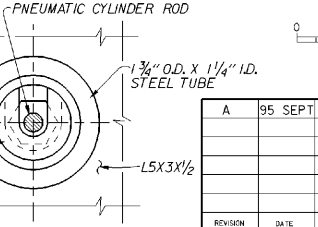
SCALE IN INCHES



SECTION J

LATCHING MECHANISM NOT SHOWN

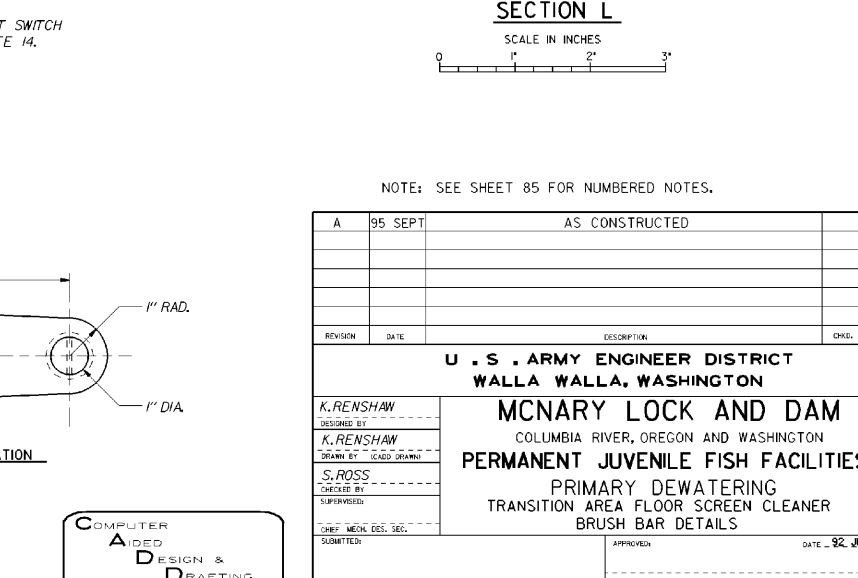
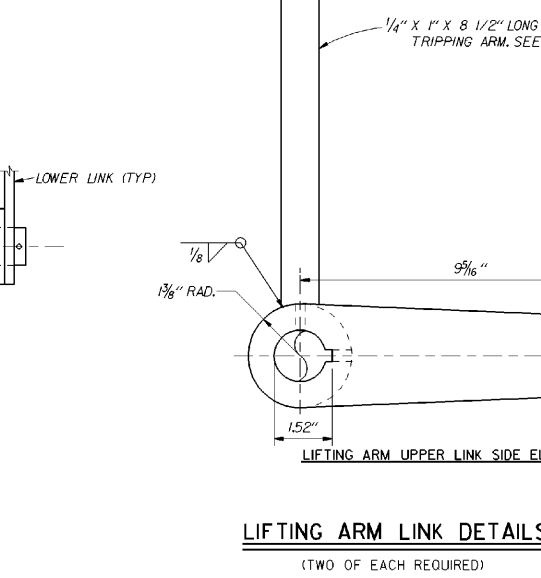
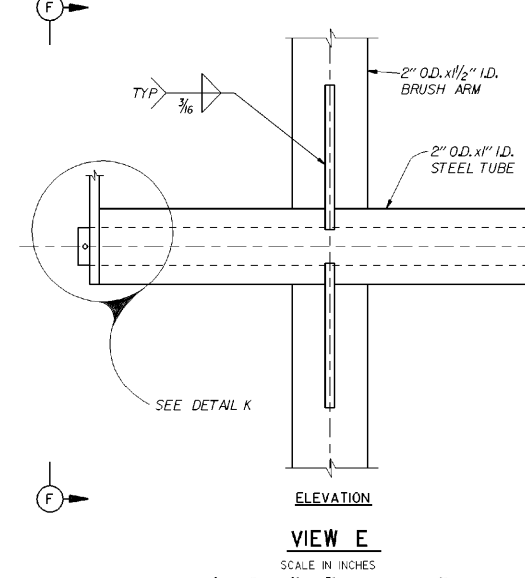
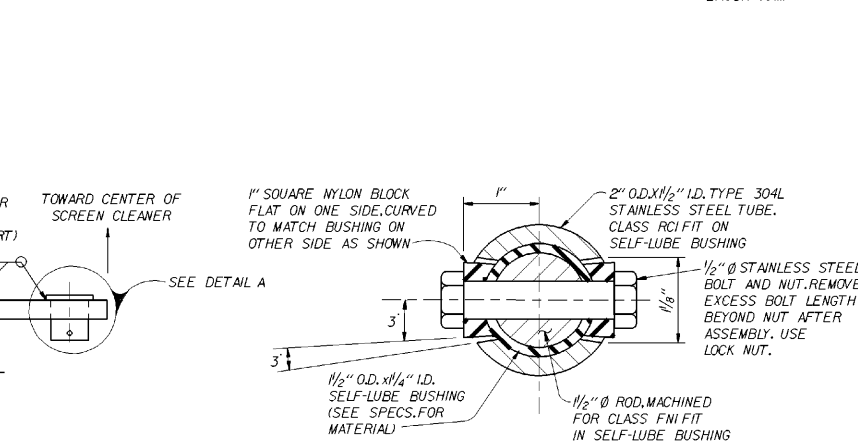
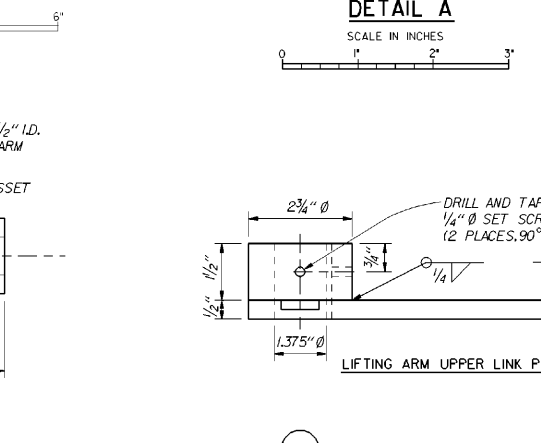
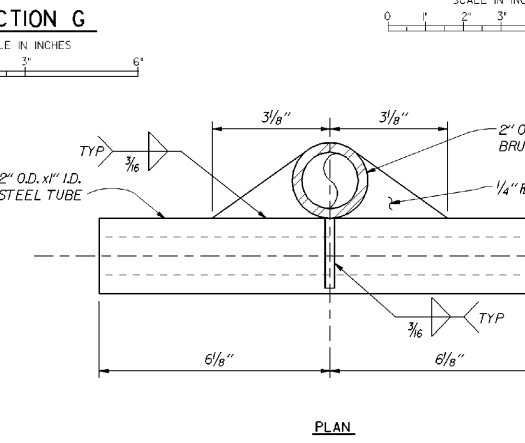
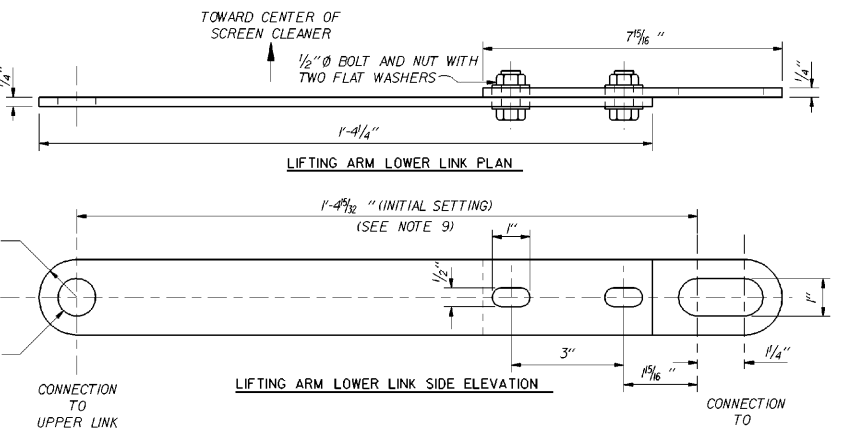
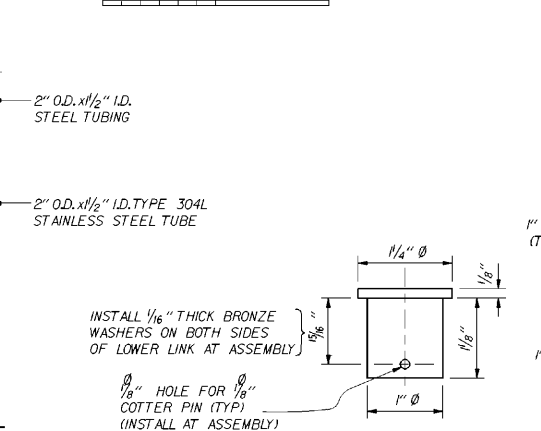
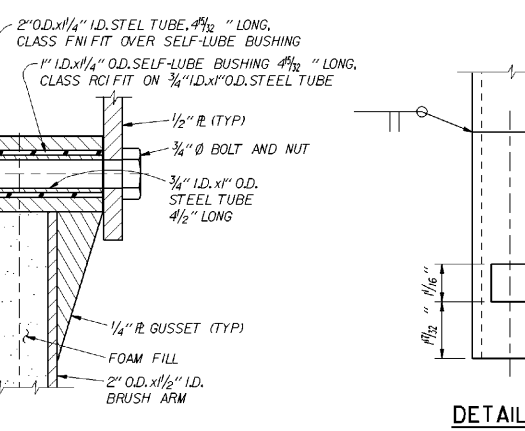
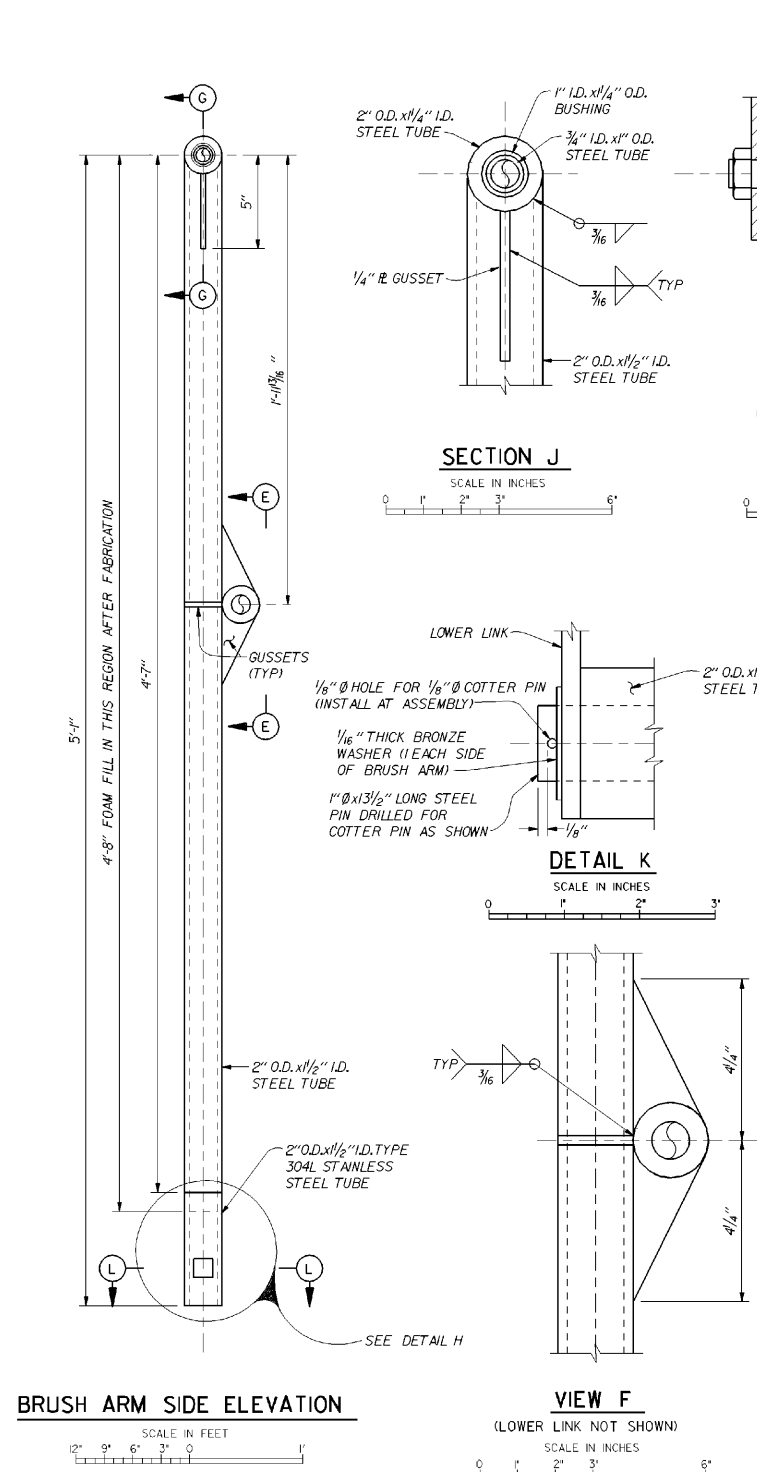
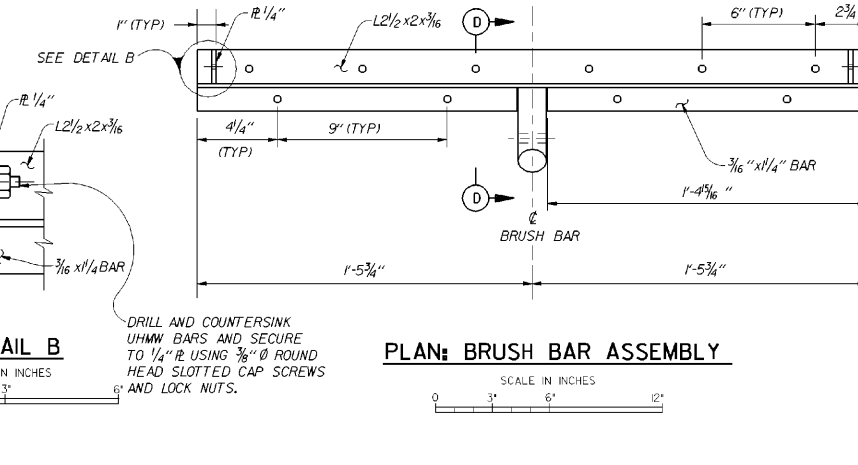
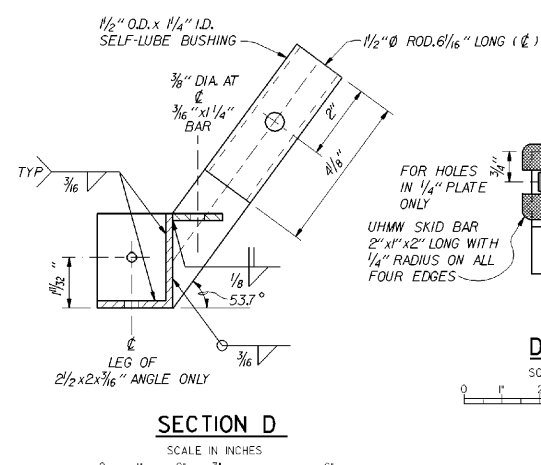
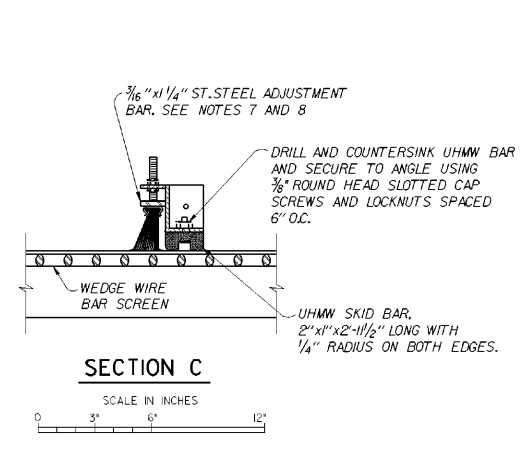
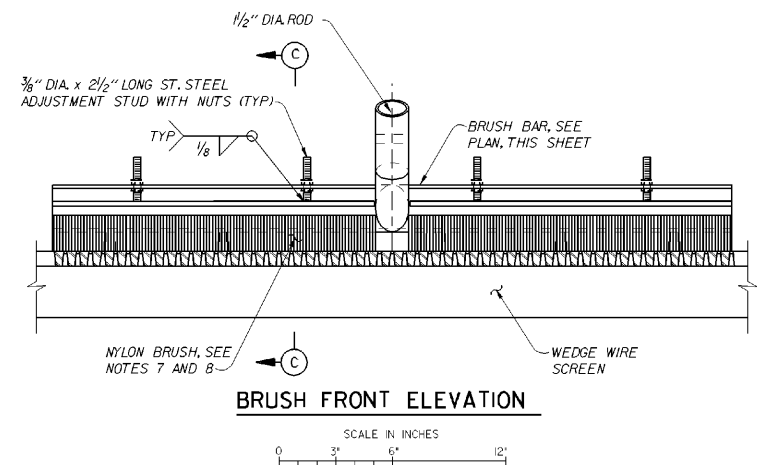
SCALE IN INCHES



SECTION K

SCALE IN INCHES

DESIGNED BY	K. RENSHAW	DATE	95 SEPT	DESCRIPTION	AS CONSTRUCTED
DRAWN BY	K. RENSHAW	DATE		DESIGNER	
CHECKED BY	S. ROSS	DATE		DRAWING	
APPROVED BY		DATE		DATE	92 JUN 17
U. S. ARMY ENGINEER DISTRICT WALLA WALLA, WASHINGTON MCNARY LOCK AND DAM COLUMBIA RIVER, OREGON AND WASHINGTON PERMANENT JUVENILE FISH FACILITIES PRIMARY DEWATERING TRANSITION AREA FLOOR SCREEN CLEANER RUNWAY SWITCH BEAM DETAILS					
SCALE AS SHOWN			INV. NO. 92-B-32		
SHEET NO. 87			FILE NO. MDF-1-3-9/35		



NOTE: SEE SHEET 85 FOR NUMBERED NOTES.

A	95 SEPT	AS CONSTRUCTED		
REVISION	DATE	DESCRIPTION	CHKD.	APPR.
U. S. ARMY ENGINEER DISTRICT WALLA WALLA, WASHINGTON MCNARY LOCK AND DAM COLUMBIA RIVER, OREGON AND WASHINGTON PERMANENT JUVENILE FISH FACILITIES PRIMARY DEWATERING TRANSITION AREA FLOOR SCREEN CLEANER BRUSH BAR DETAILS				
DESIGNED BY K. RENSHAW		DATE: 92 JUN 17		
DRAWN BY S. ROSS		SCALE AS SHOWN INV. NO. 92-B-32		
CHECKED BY S. ROSS		SHEET NO. 88		
SUBMITTED		FILE NO. MDF-1-3-9/36		