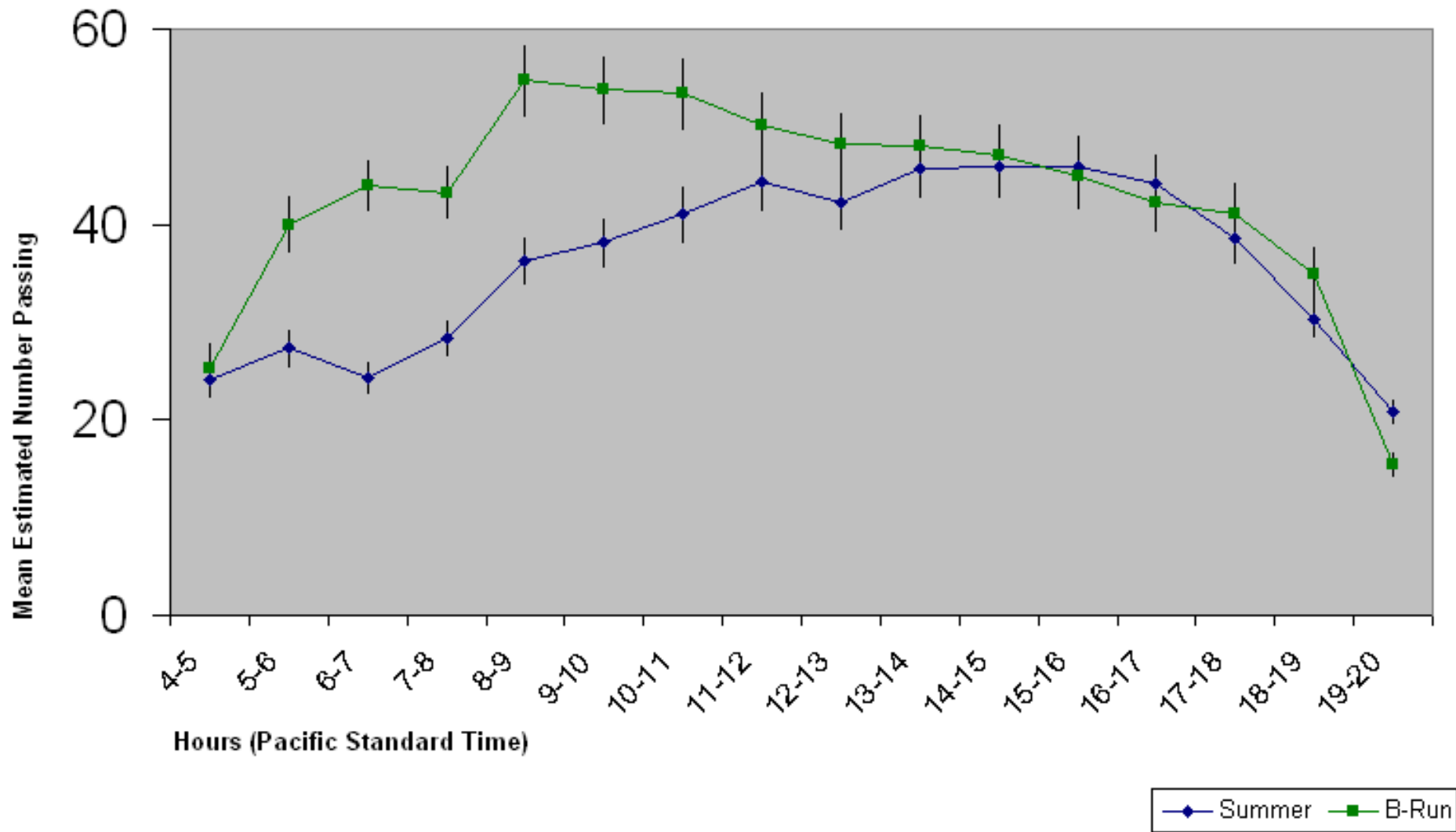
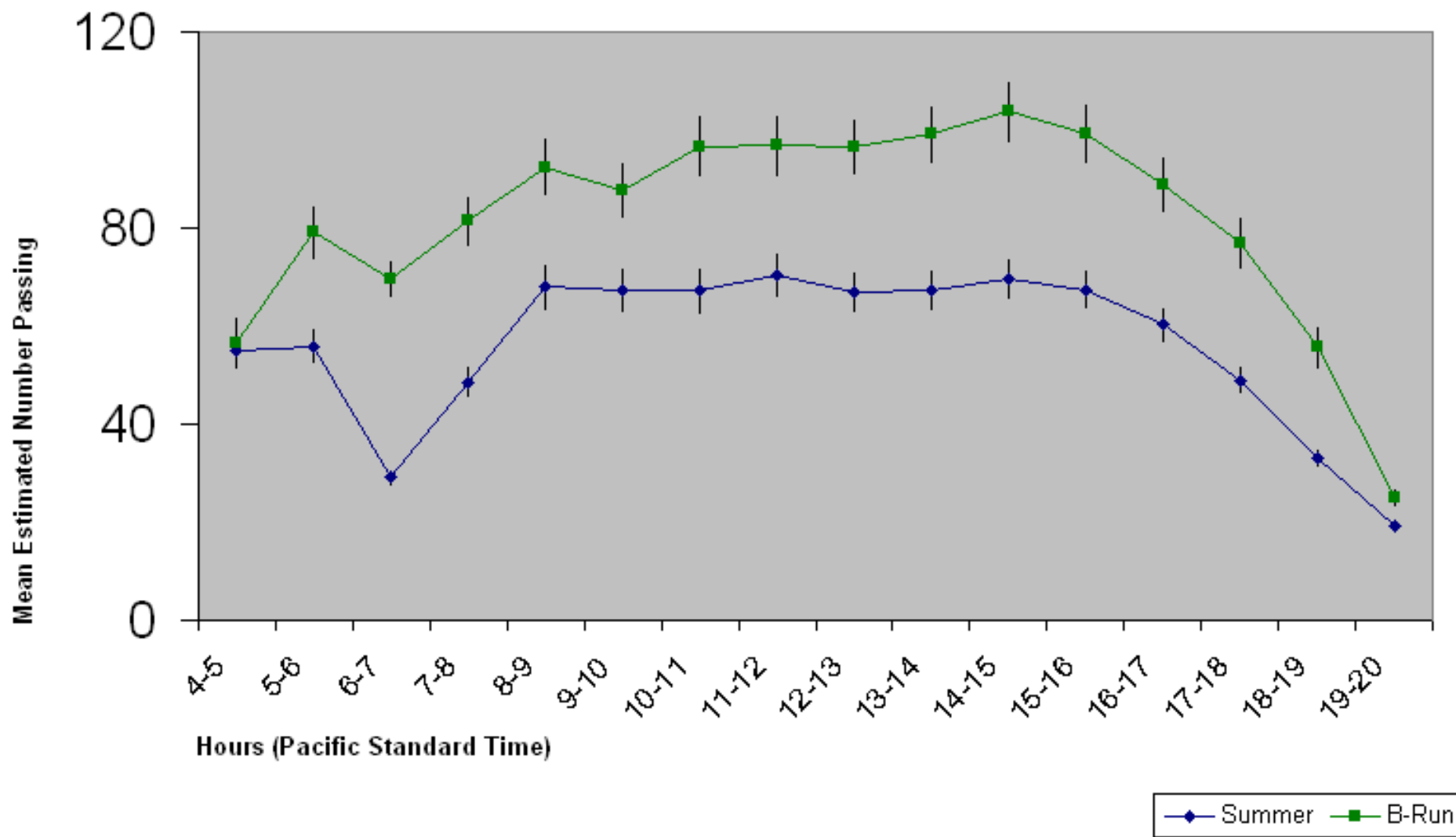


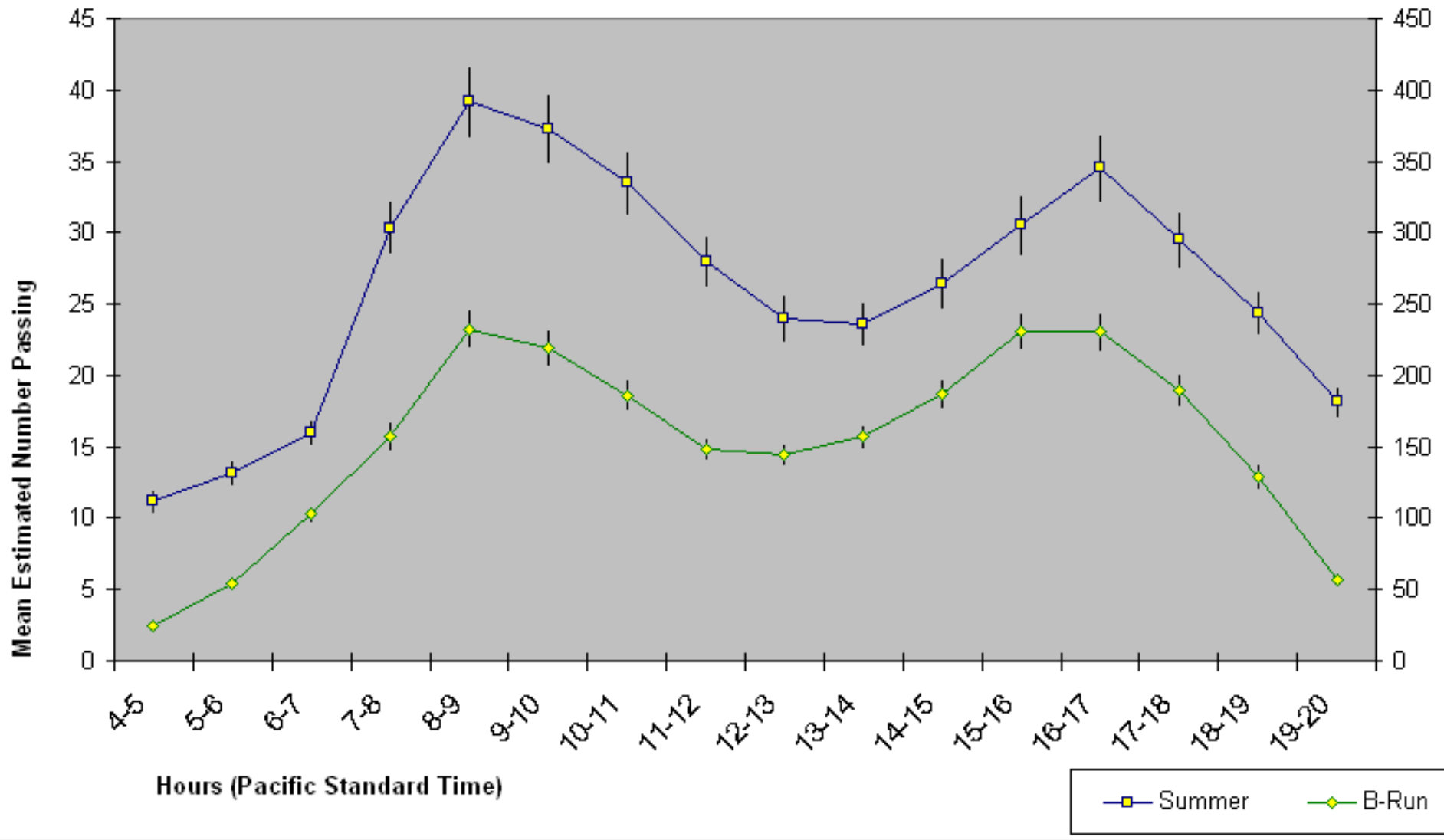
The Diel Distributions of the Summer (3/1-8/24) and B-Run (8/25-11/30) Steelhead Runs through the Bradford Island Fishladder at Bonneville Dam  
2005 through 2008 Estimated Counts (355K Summer and 228K B-Run)



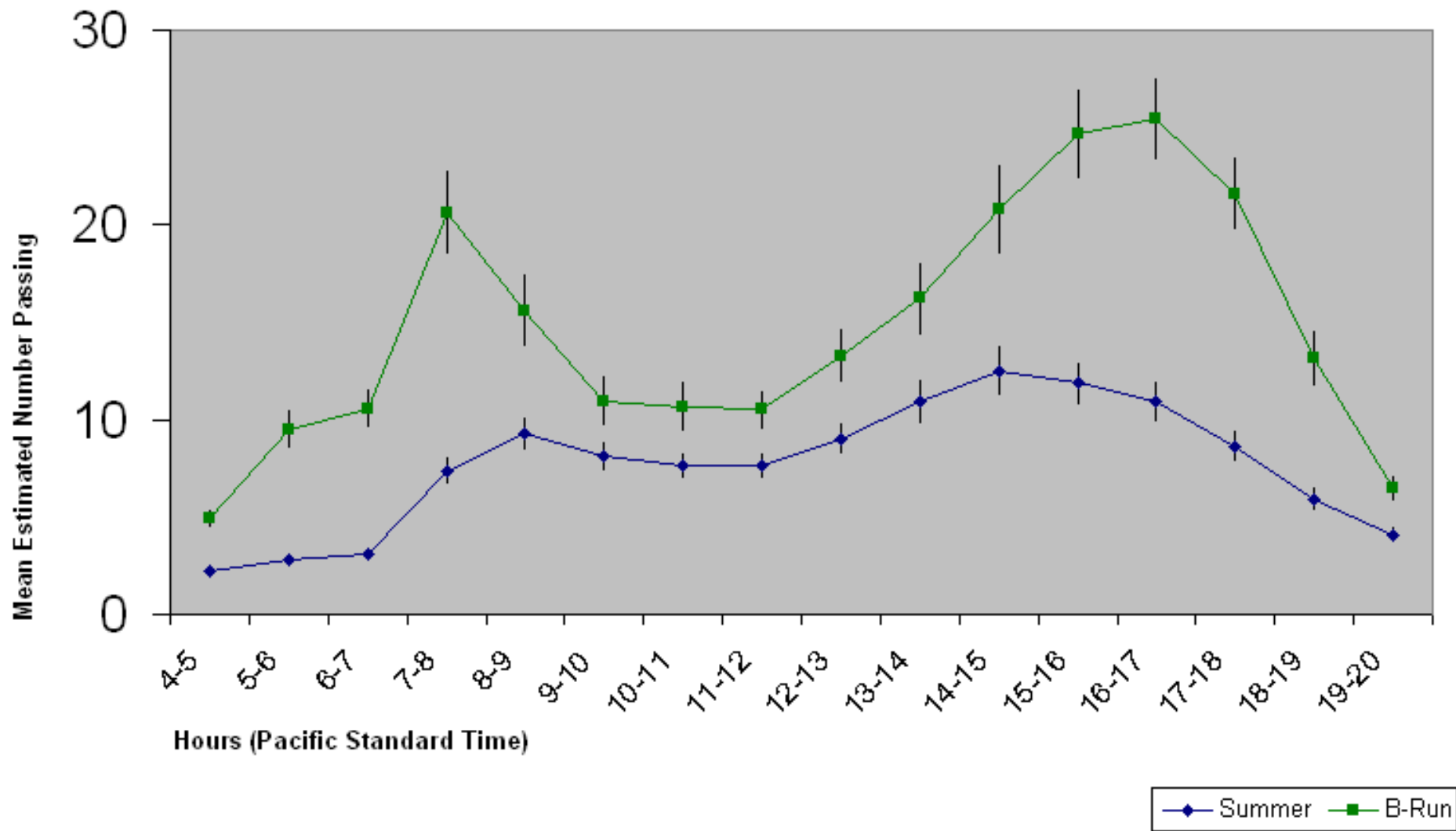
The Diel Distributions of the Summer (3/1-8/24) and B-Run (8/25-11/30) Steelhead Runs through the Washington Shore Fishladder at Bonneville Dam  
2005 through 2008 Estimated Counts (550K Summer and 433K B-Run)



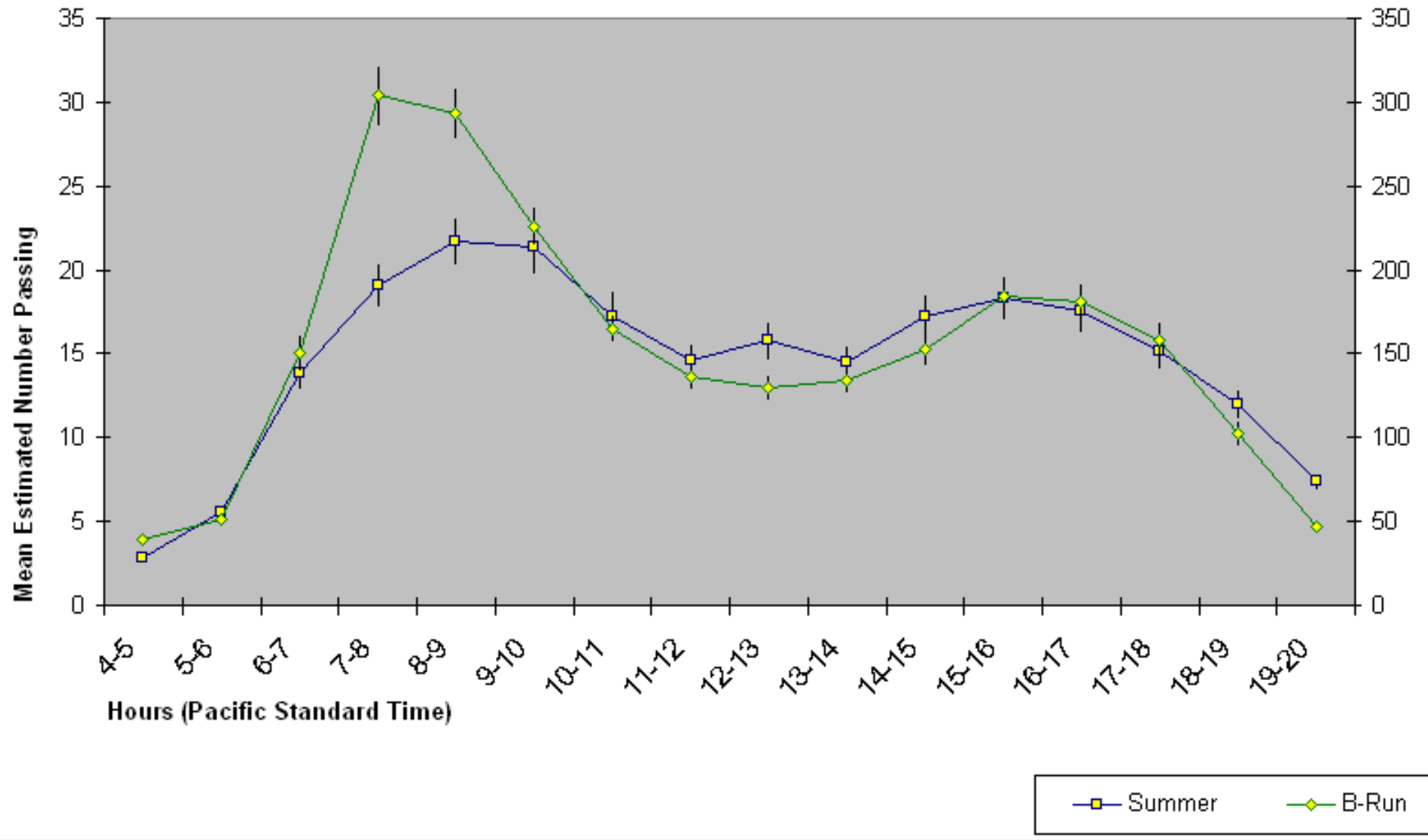
The Diel Distributions of the Summer (4/1-8/27) and B-Run (8/28-10/31) Steelhead Runs through East Fishladder at The Dalles Dam  
2005 through 2008 Estimated Counts (250K Summer and 637K B-Run)



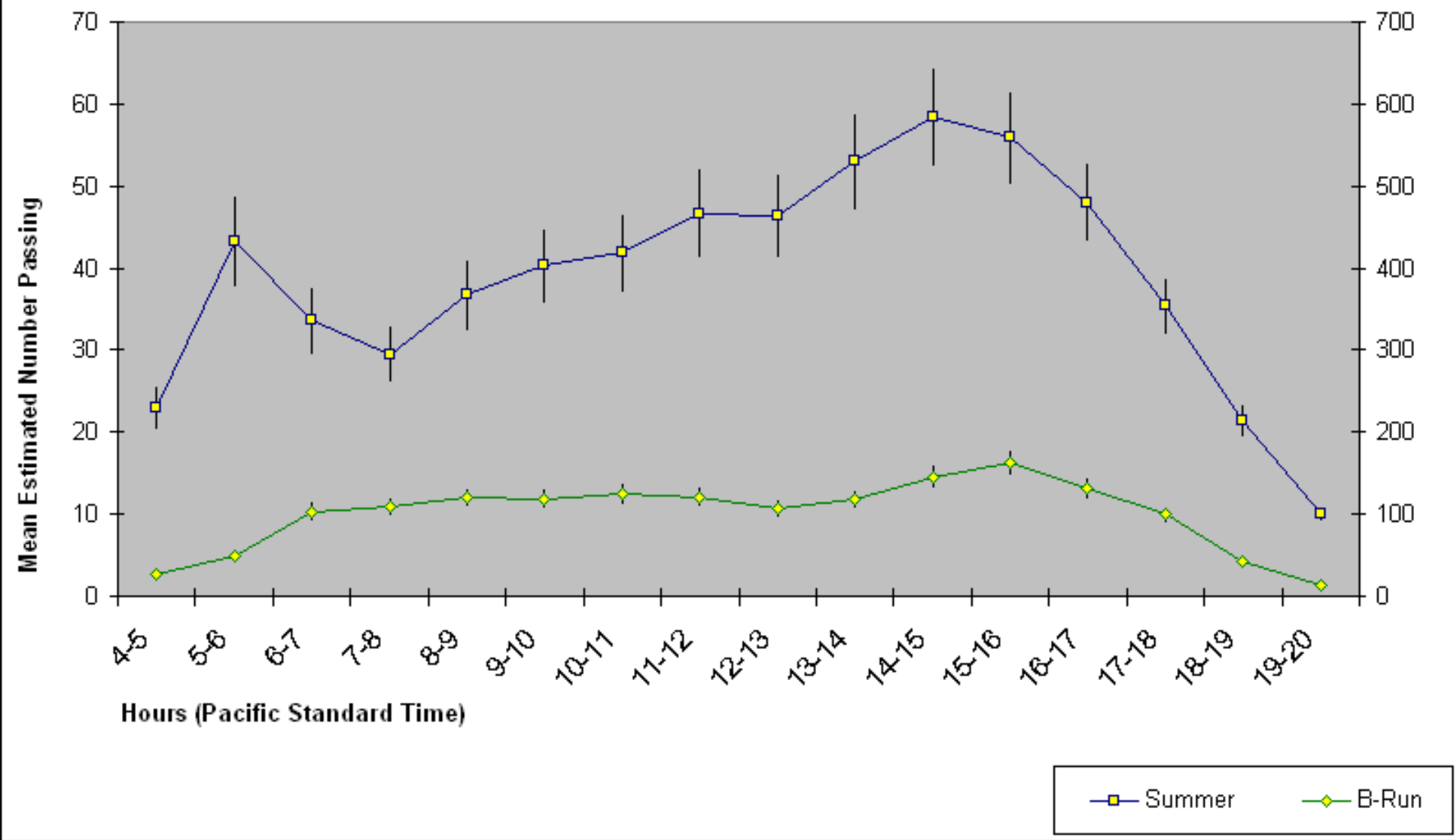
The Diel Distributions of the Summer (4/1-8/27) and B-Run (8/28-10/31) Steelhead Runs through the North Fishladder at The Dalles Dam  
2005 through 2008 Estimated Counts (73K Summer and 61K B-Run)



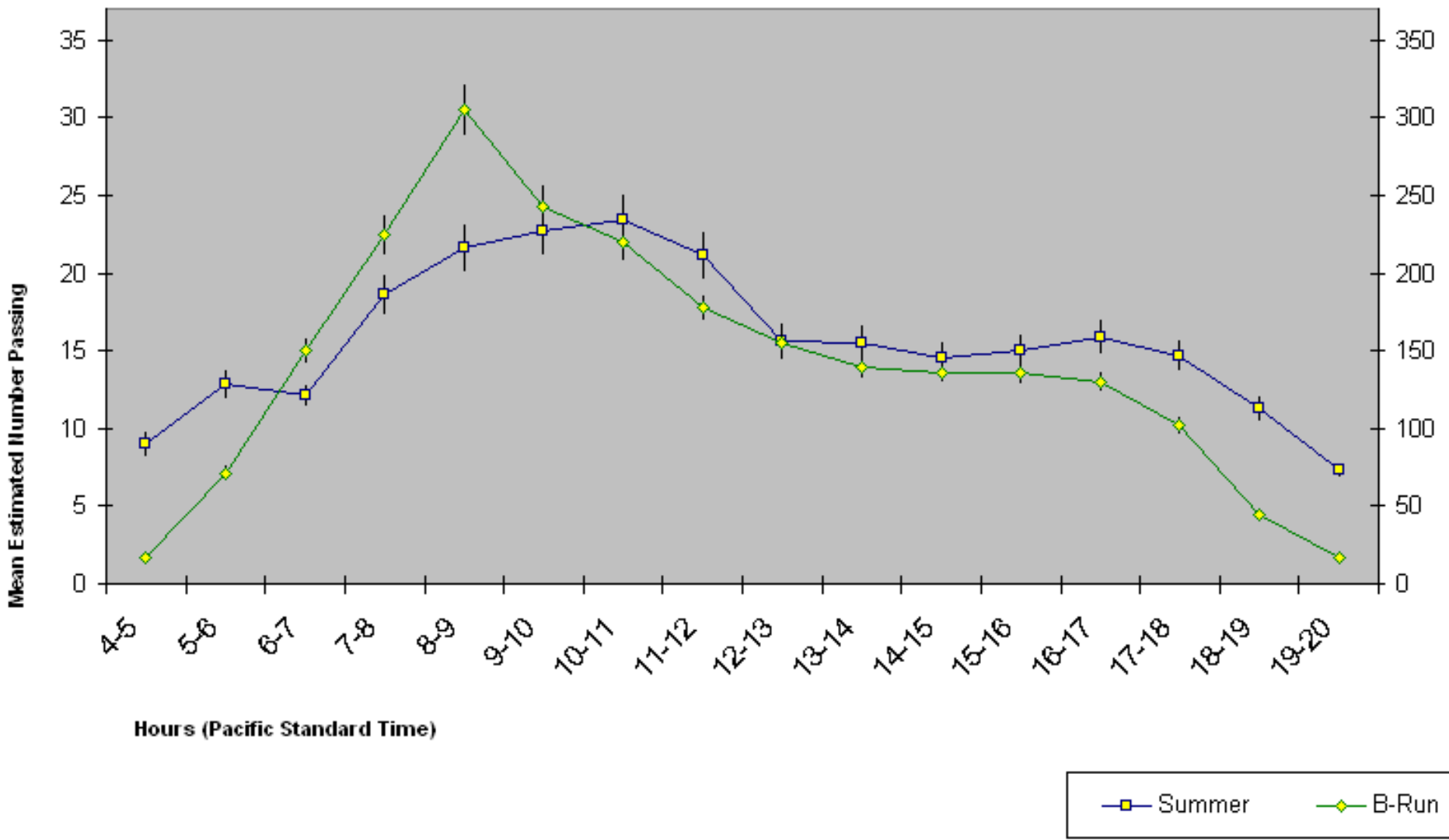
The Diel Distributions of the Summer (4/1-8/29) and B-Run (8/30-10/31) Steelhead Runs through the South Fishladder at John Day Dam  
2005 through 2008 Estimated Counts (141K Summer and 560K B-Run)



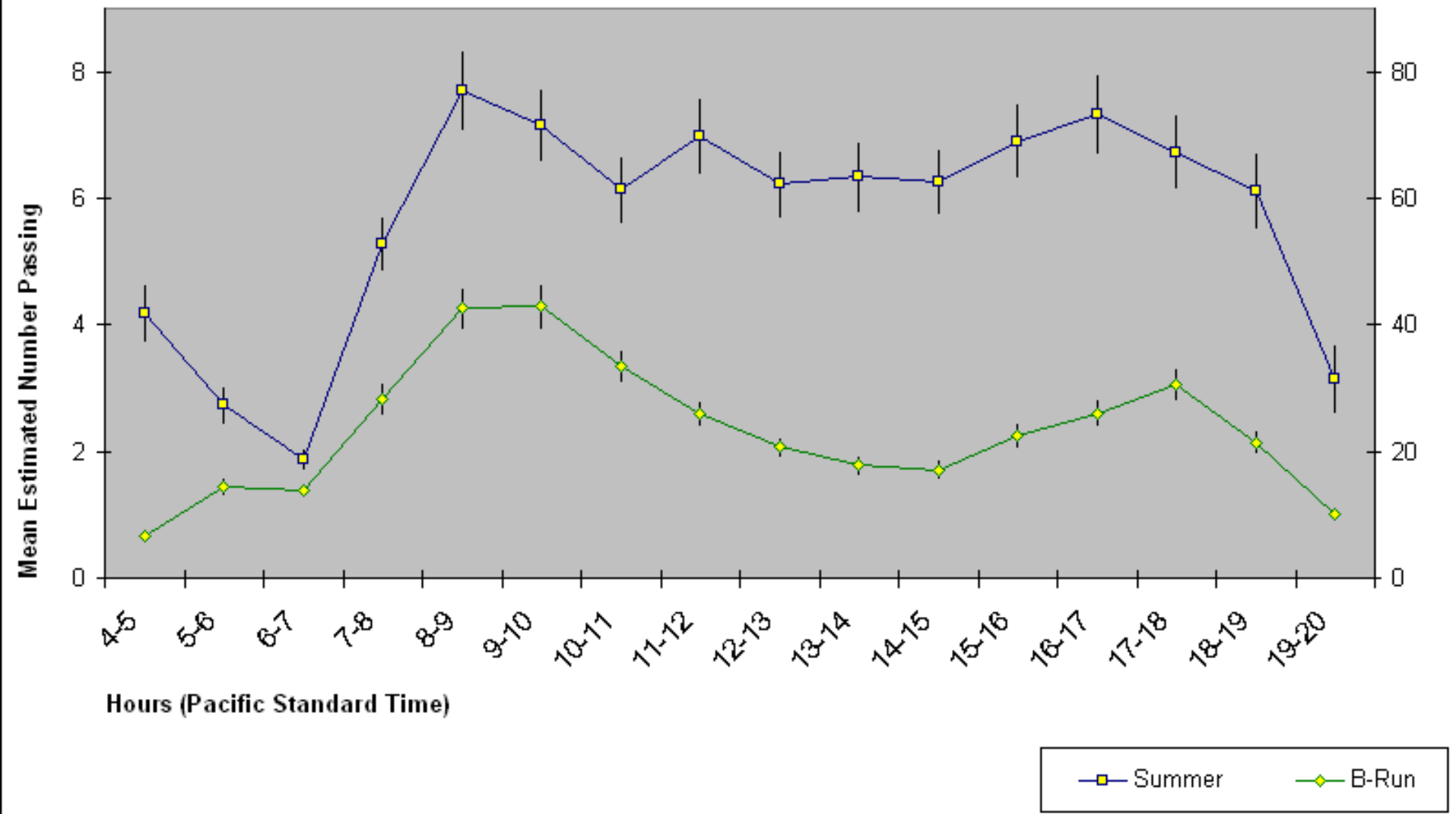
The Diel Distributions of the Summer (4/1-8/29) and B-Run (8/30-10/31) Steelhead Runs through the North Fishladder at John Day Dam  
2005, 2007, and 2008 Estimated Counts (282K Summer and 301K B-Run)



The Diel Distributions of the Summer (4/1-9/1) and B-Run (9/2-10/31) Steelhead Runs through the Oregon Shore Fishladder at McNary Dam  
2006 through 2008 Estimated Counts (103K Summer and 409K B-Run)

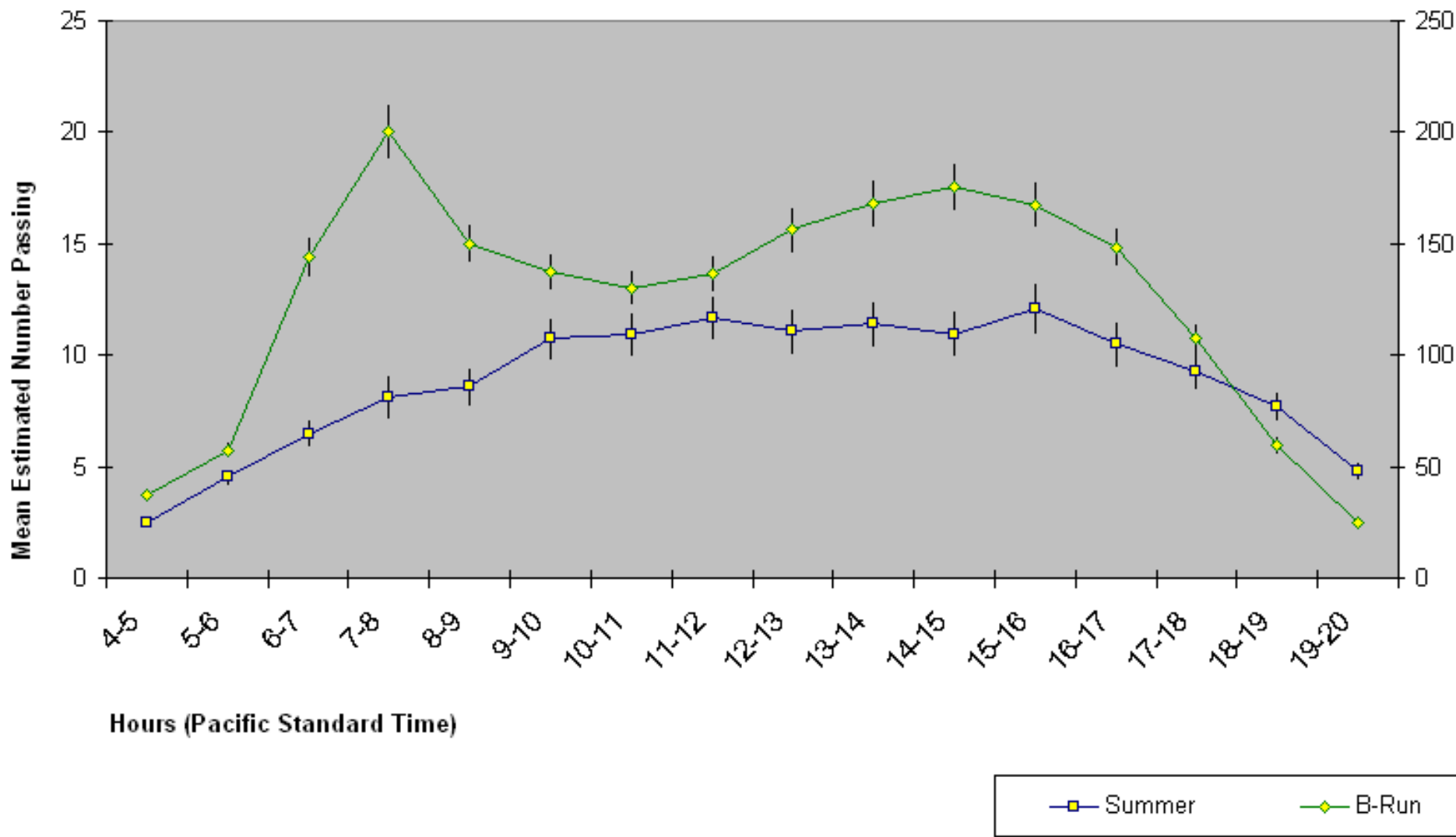


The Diel Distributions of the Summer (4/1-9/1) and B-Run (9/2-10/31) Steelhead Runs through the Washington Shore Fishladder at McNary Dam  
2006 through 2008 Estimated Counts (36K Summer and 67K B-Run)

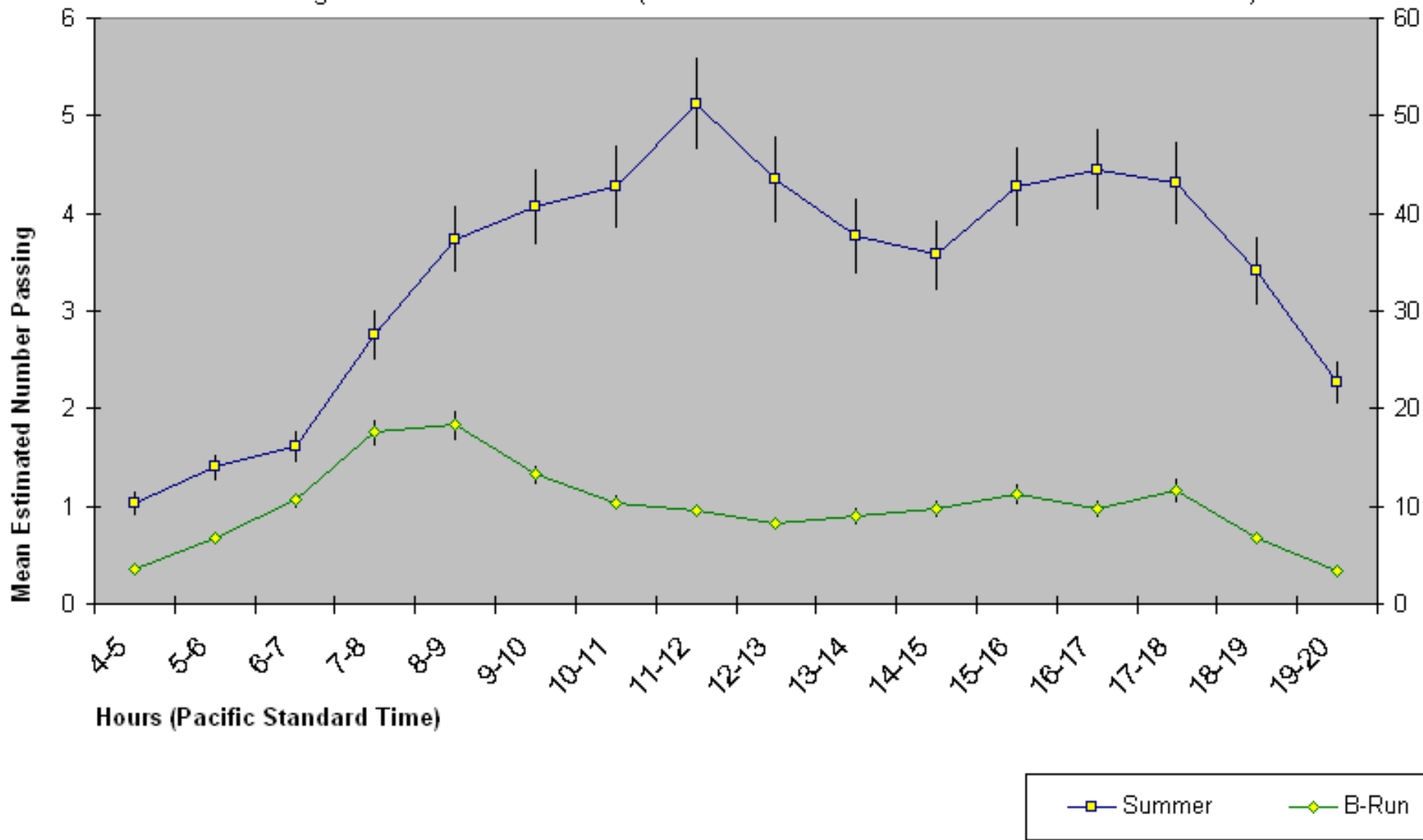




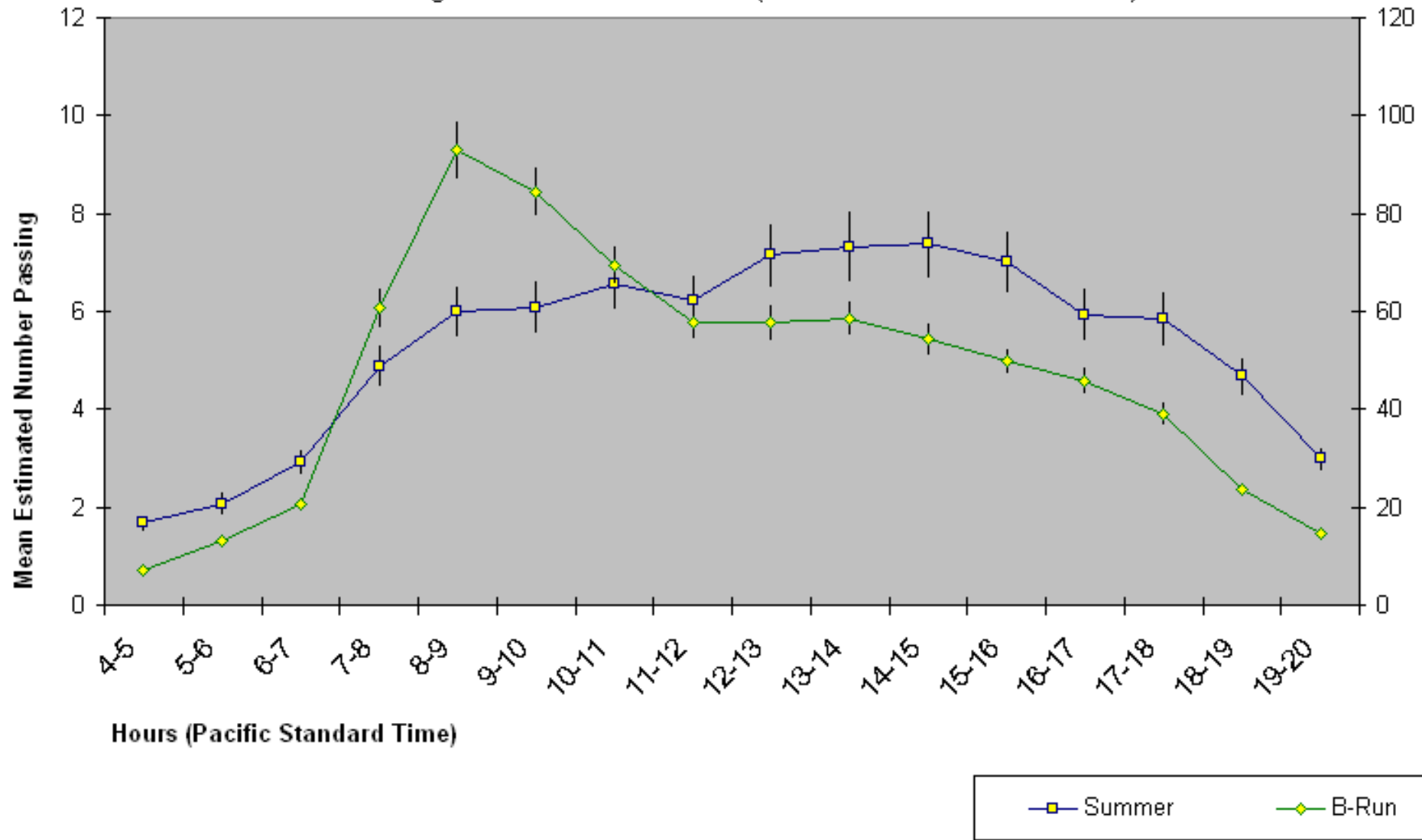
The Diel Distributions of the Summer (4/1-9/4) and B-Run (9/5-10/31) Steelhead Runs through the South Fishladder at Ice Harbor Dam  
2006 through 2008 Estimated Counts (59K Summer and 340K B-Run)



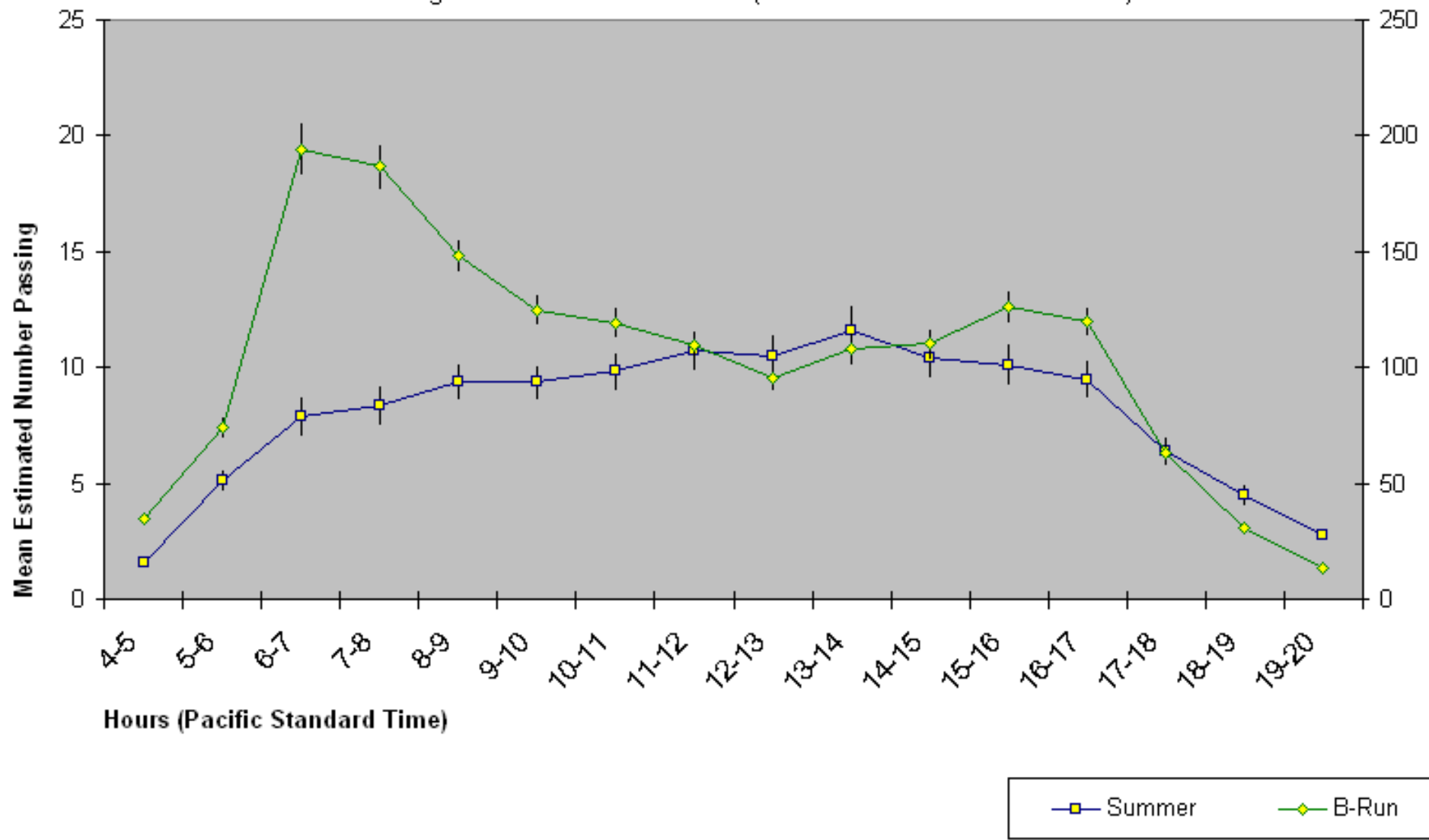
The Diel Distributions of the Summer (4/1-9/4) and B-Run (9/5-10/31) Steelhead Runs through the North Fishladder at Ice Harbor Dam  
2006 through 2008 Estimated Counts (23K Summer Steelhead and 27K B-Run Steelhead)



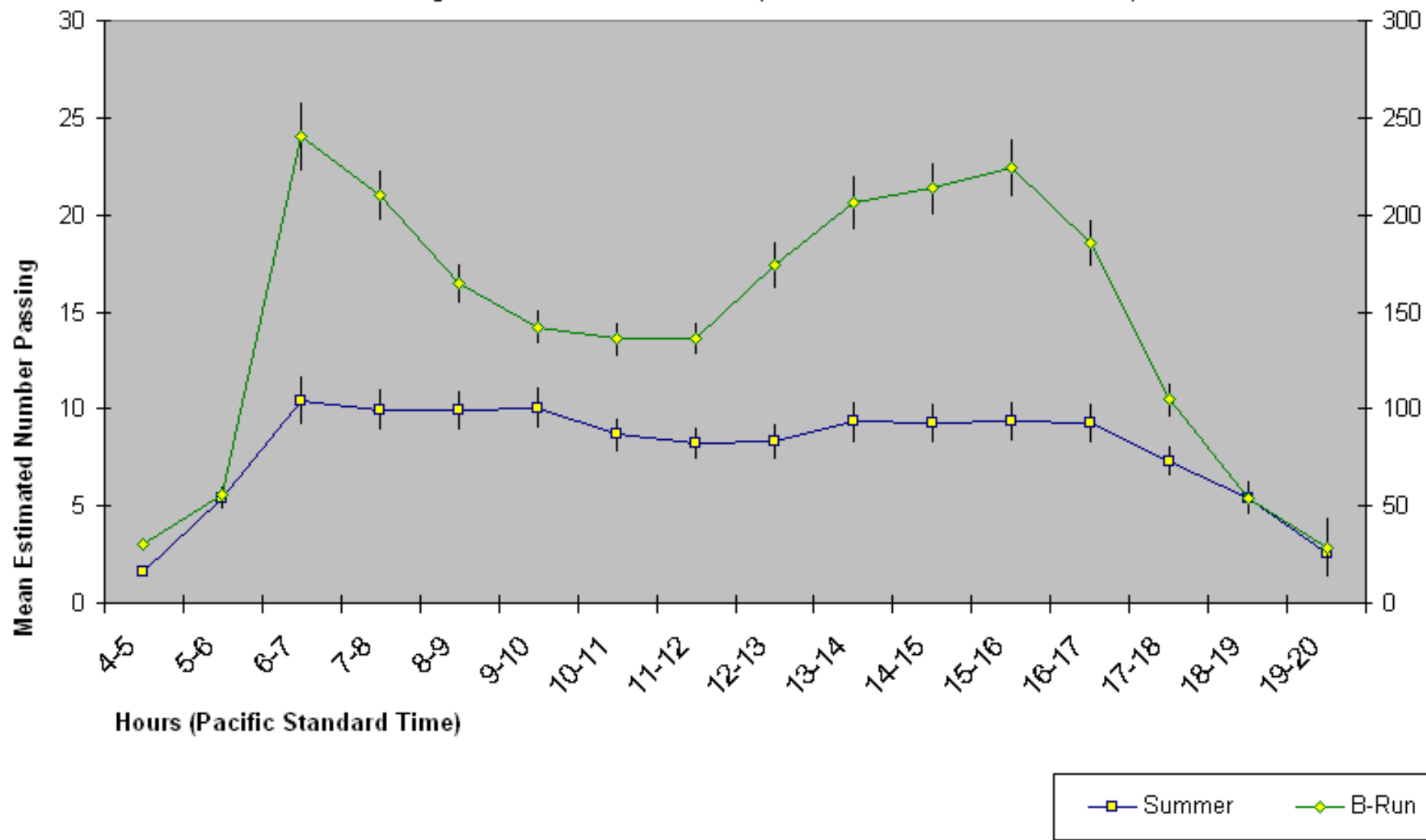
The Diel Distributions of the Summer (4/1-9/6) and B-Run (9/7-10/31) Steelhead Runs through the South Fishladder at Lower Monumental Dam  
2008 through 2008 Estimated Counts (36K Summer and 124K B-Run)



The Diel Distributions of the Summer (4/1-9/6) and B-Run (9/7-10/31) Steelhead Runs through the North Fishladder at Lower Monumental Dam  
2008 through 2008 Estimated Counts (54K Summer and 274K B-Run)



The Diel Distributions of the Summer (4/1-9/8) and B-Run (9/9-10/31) Steelhead Runs through the Fishladder at Little Goose Dam  
2006 through 2008 Estimated Counts (52K Summer and 134K B-Run)



The Diel Distributions of the Summer (4/1-9/10) and B-Run (9/11-10/31) Steelhead Runs through the Fishladder at Lower Granite Dam  
2006 through 2008 Estimated Counts (55K Summer and 377K B-Run)

