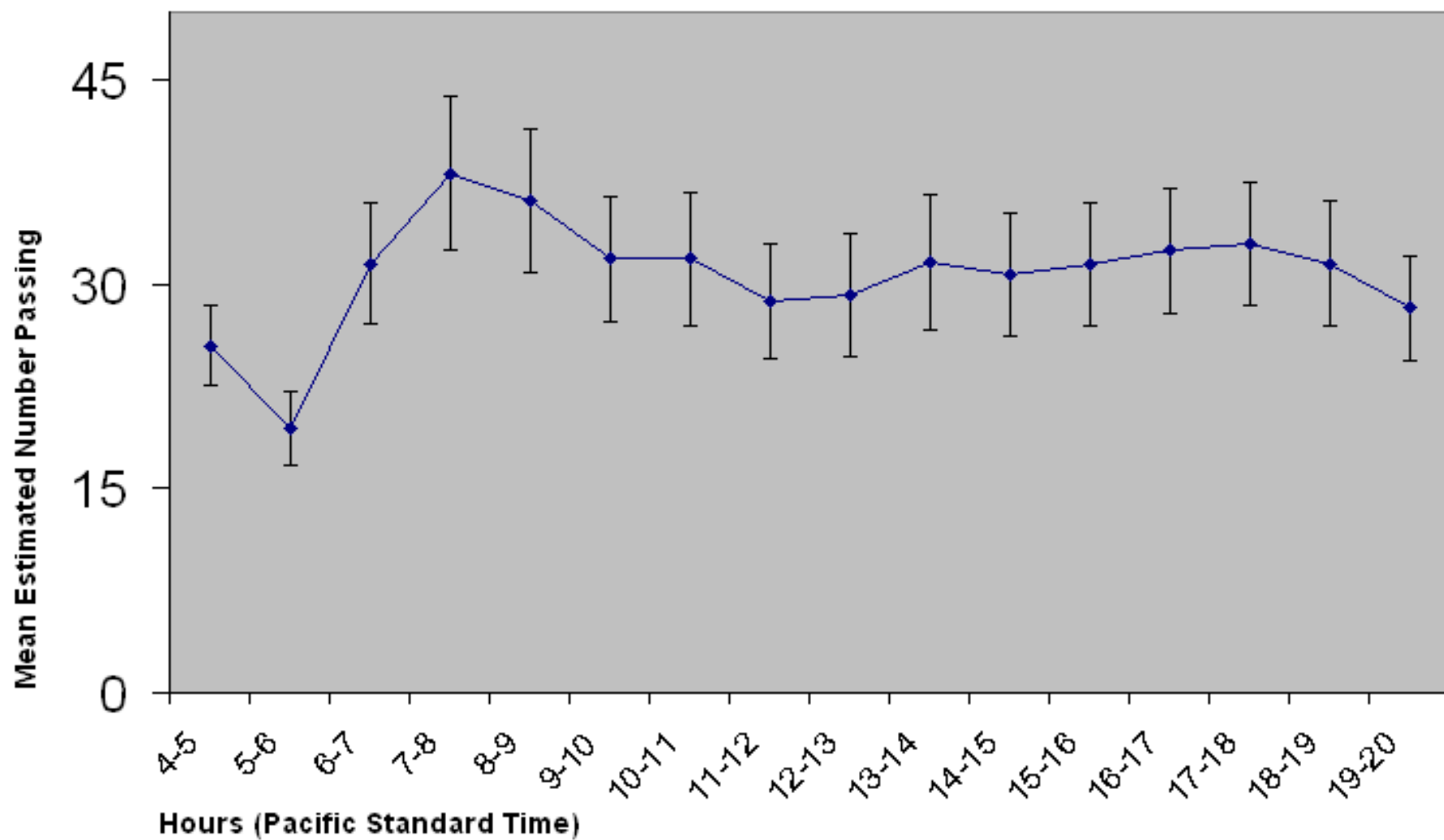
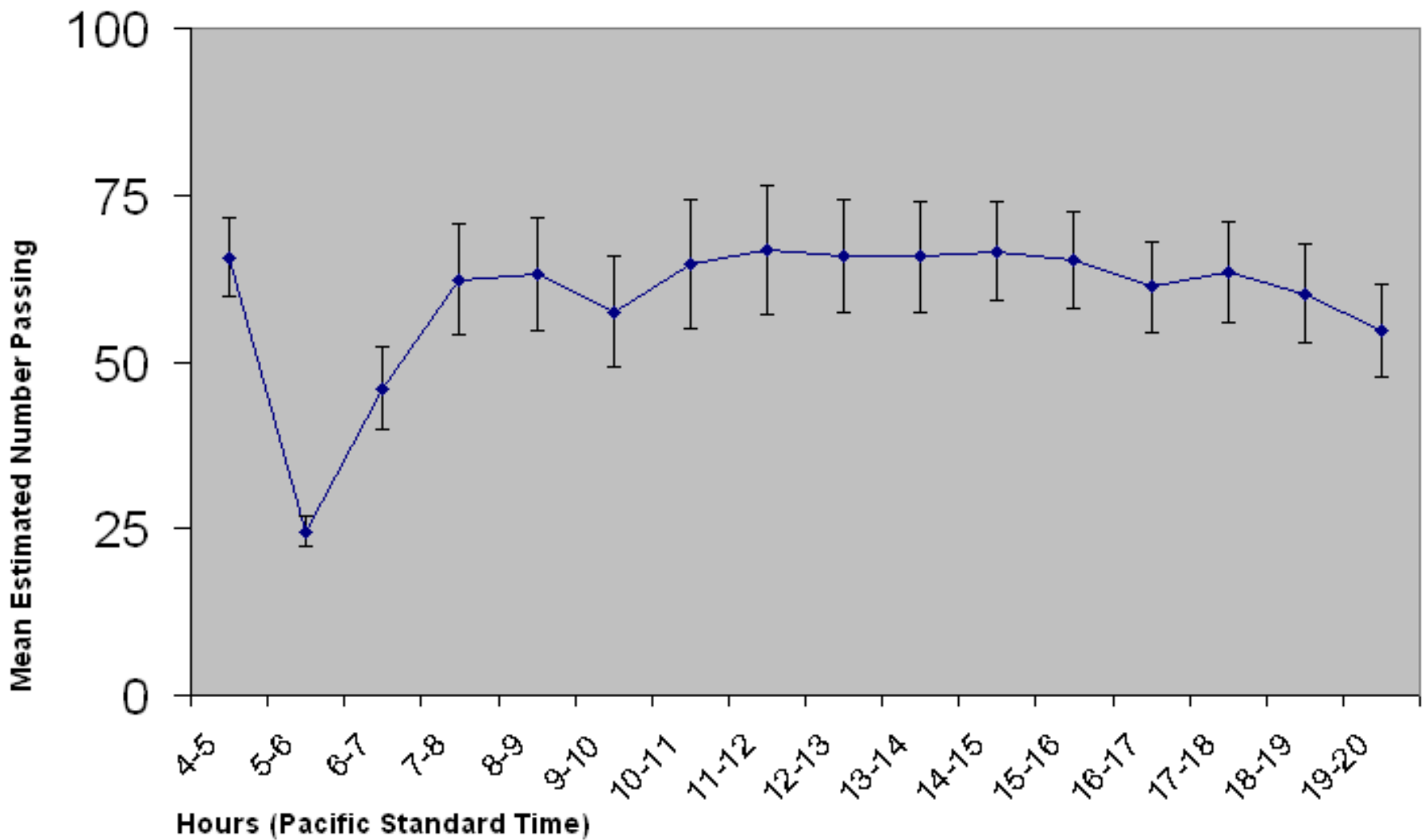


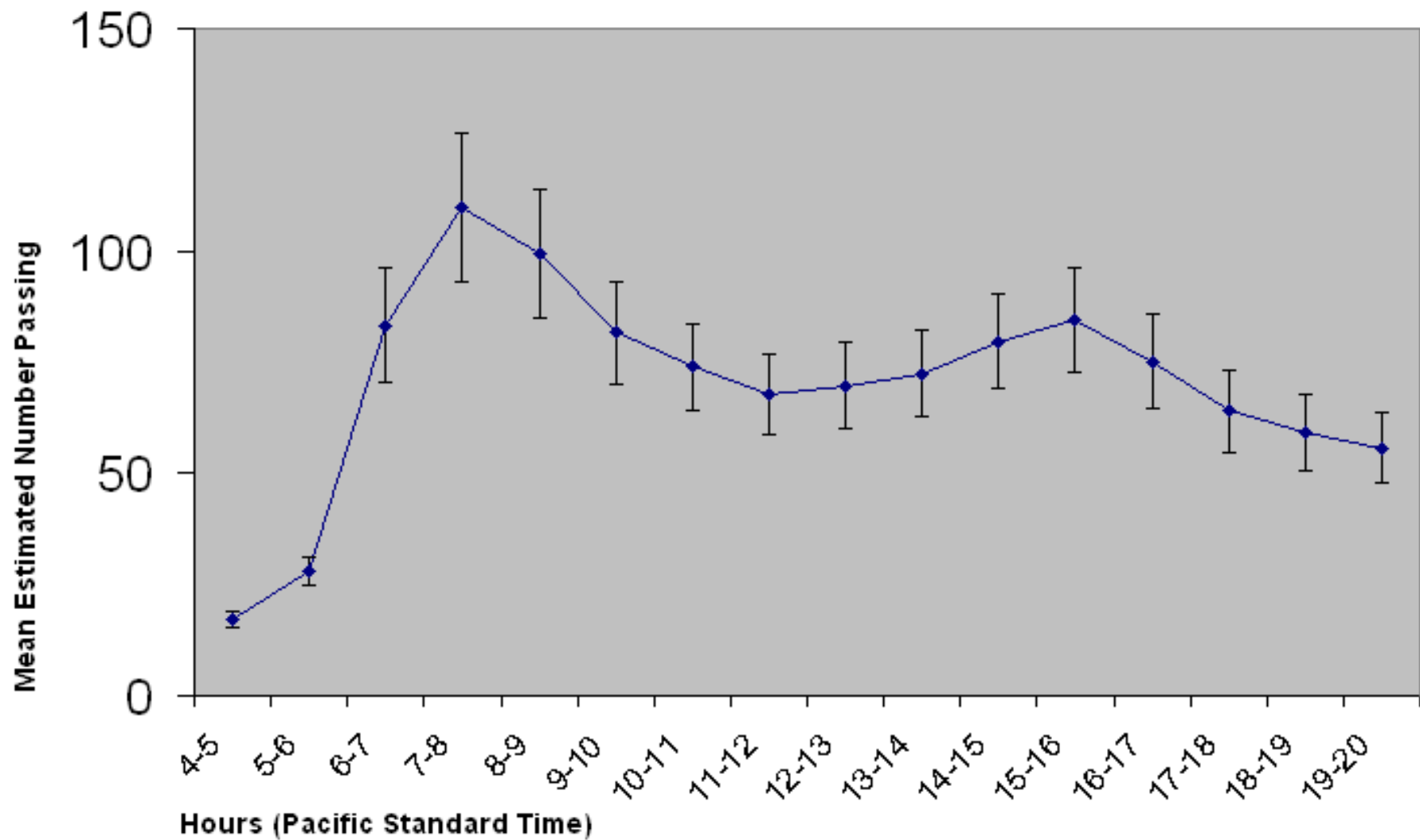
The Diel Distribution of the Sockeye Run (6/1-7/31)
through the Bradford Island Fishladder at Bonneville Dam
2005 through 2008 Estimated Counts (120K Sockeye)



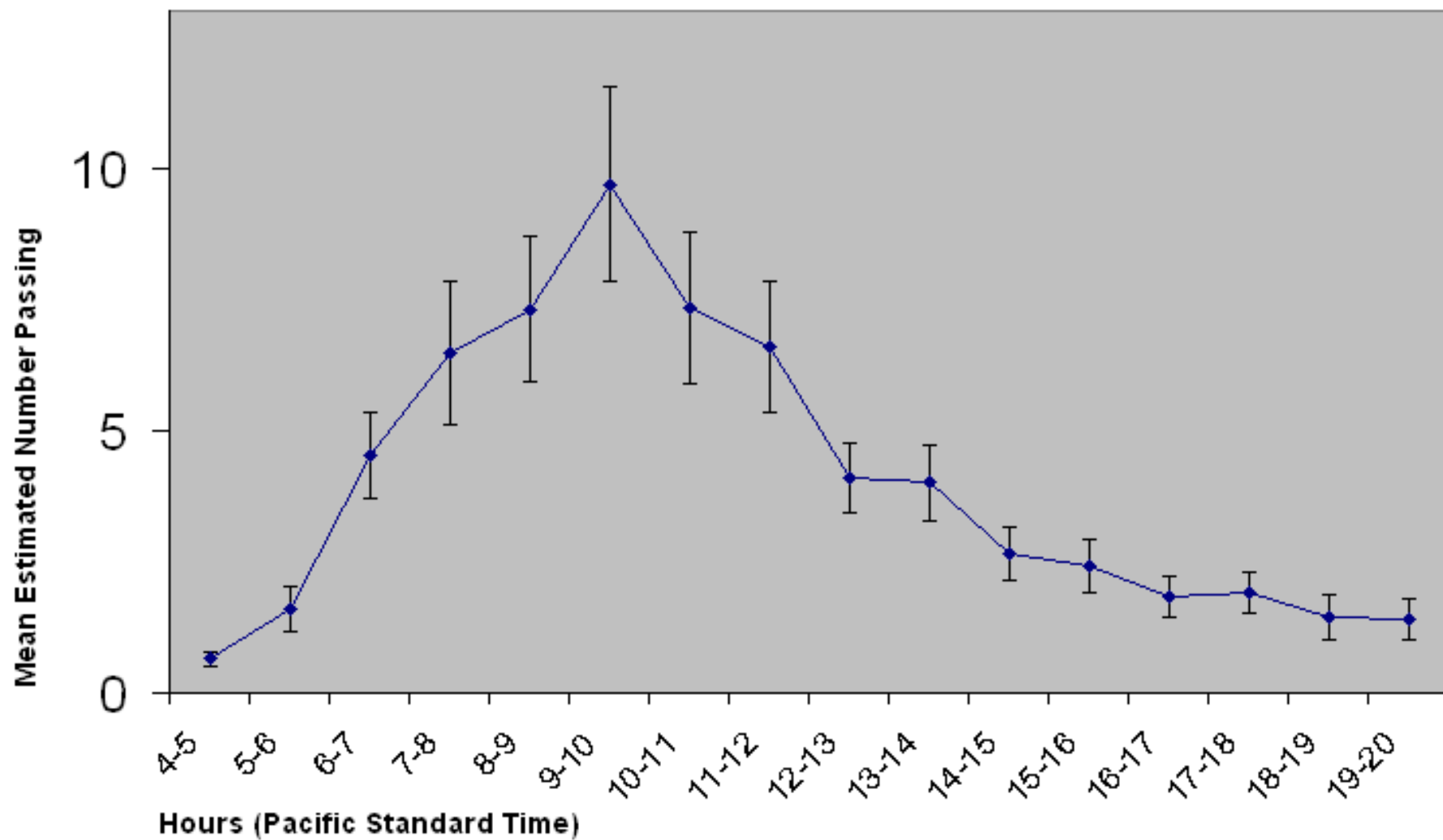
The Diel Distribution of the Sockeye Run (6/1-7/31)
through the Washington Shore Fishladder at Bonneville Dam
2005 through 2008 Estimated Counts (233K Sockeye)



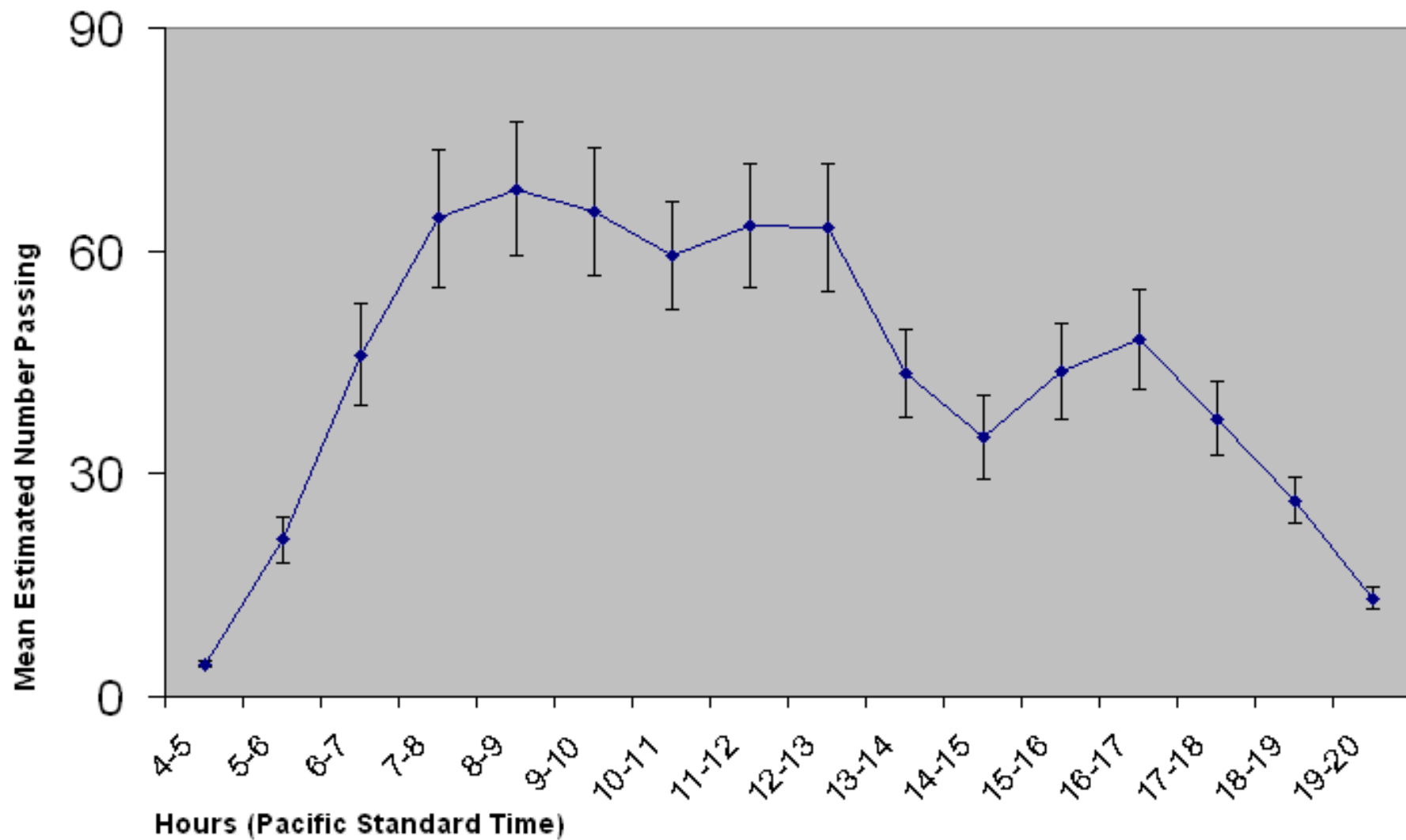
The Diel Distribution of the Sockeye Run (6/4-8/3)
through East Fishladder at The Dalles Dam
2005 through 2008 Estimated Counts (273K Sockeye)



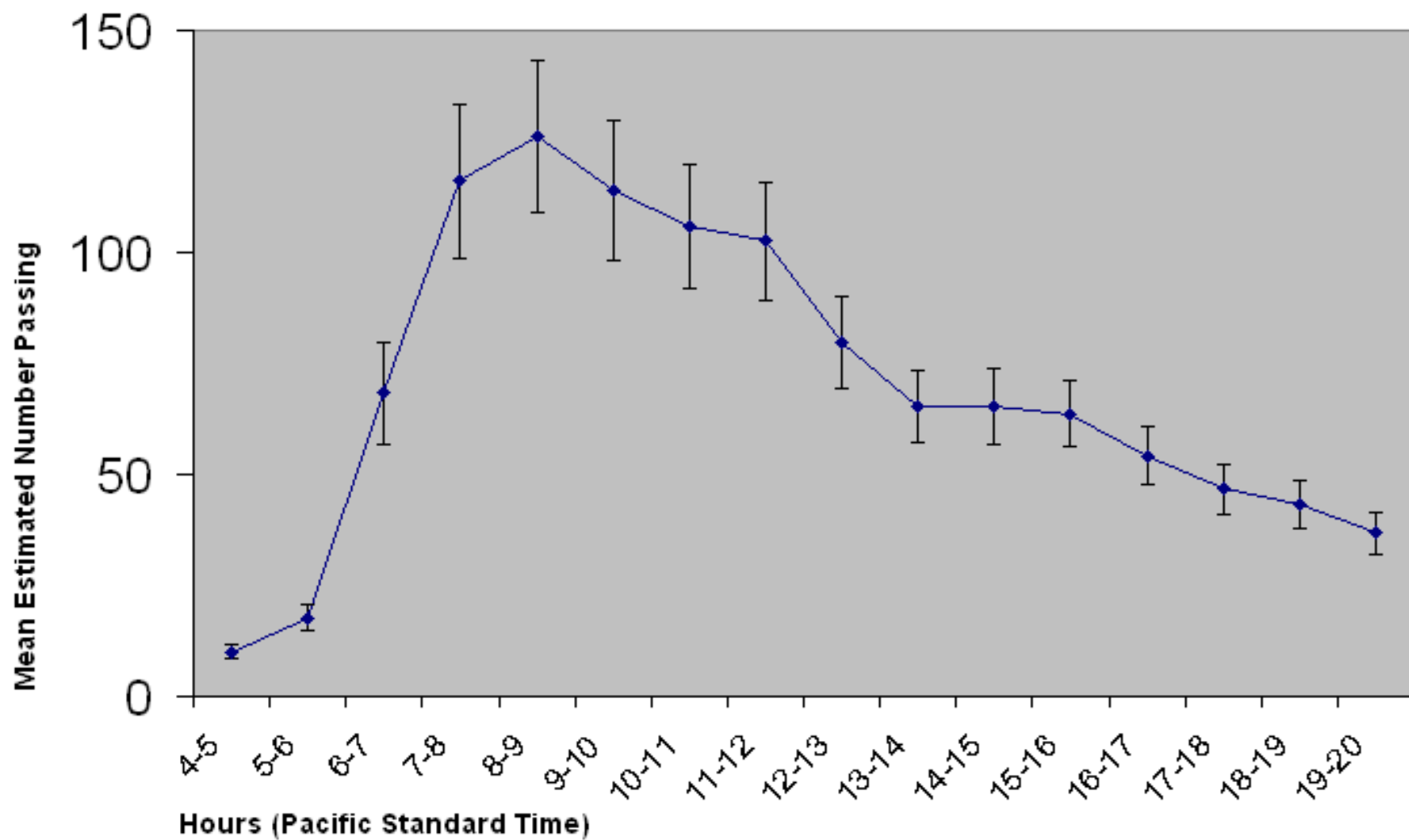
The Diel Distribution of the Sockeye Run (6/4-8/3)
through the North Fishladder at The Dalles Dam
2005 through 2008 Estimated Counts (16K Sockeye)



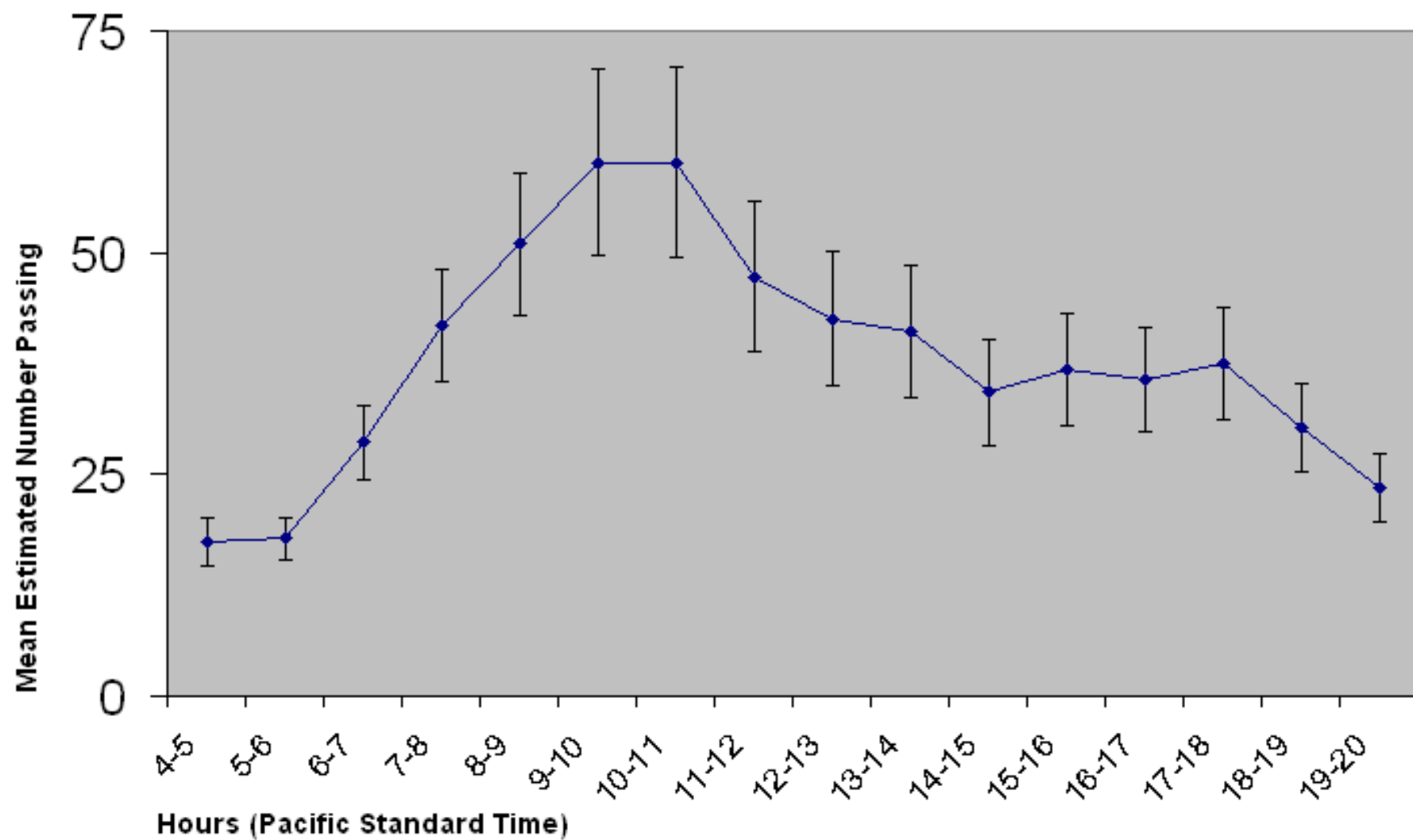
The Diel Distribution of the Sockeye Run (6/6-8/5)
through the South Fishladder at John Day Dam
2005 through 2008 Estimated Counts (172K Sockeye)



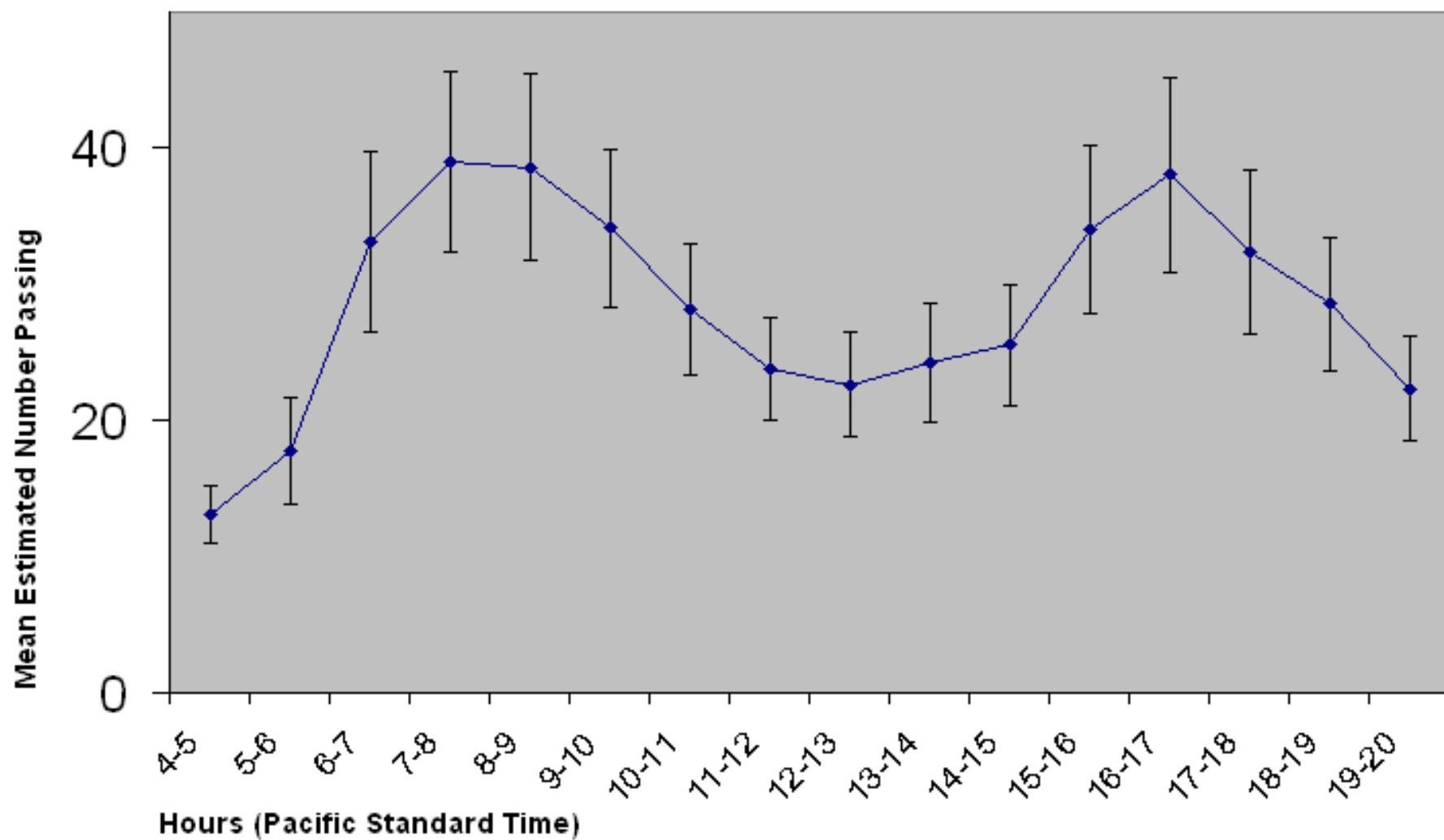
The Diel Distribution of the Sockeye Run (6/6-8/5)
through the North Fishladder at John Day Dam
2005, 2007, and 2008 Estimated Counts (204K Sockeye)



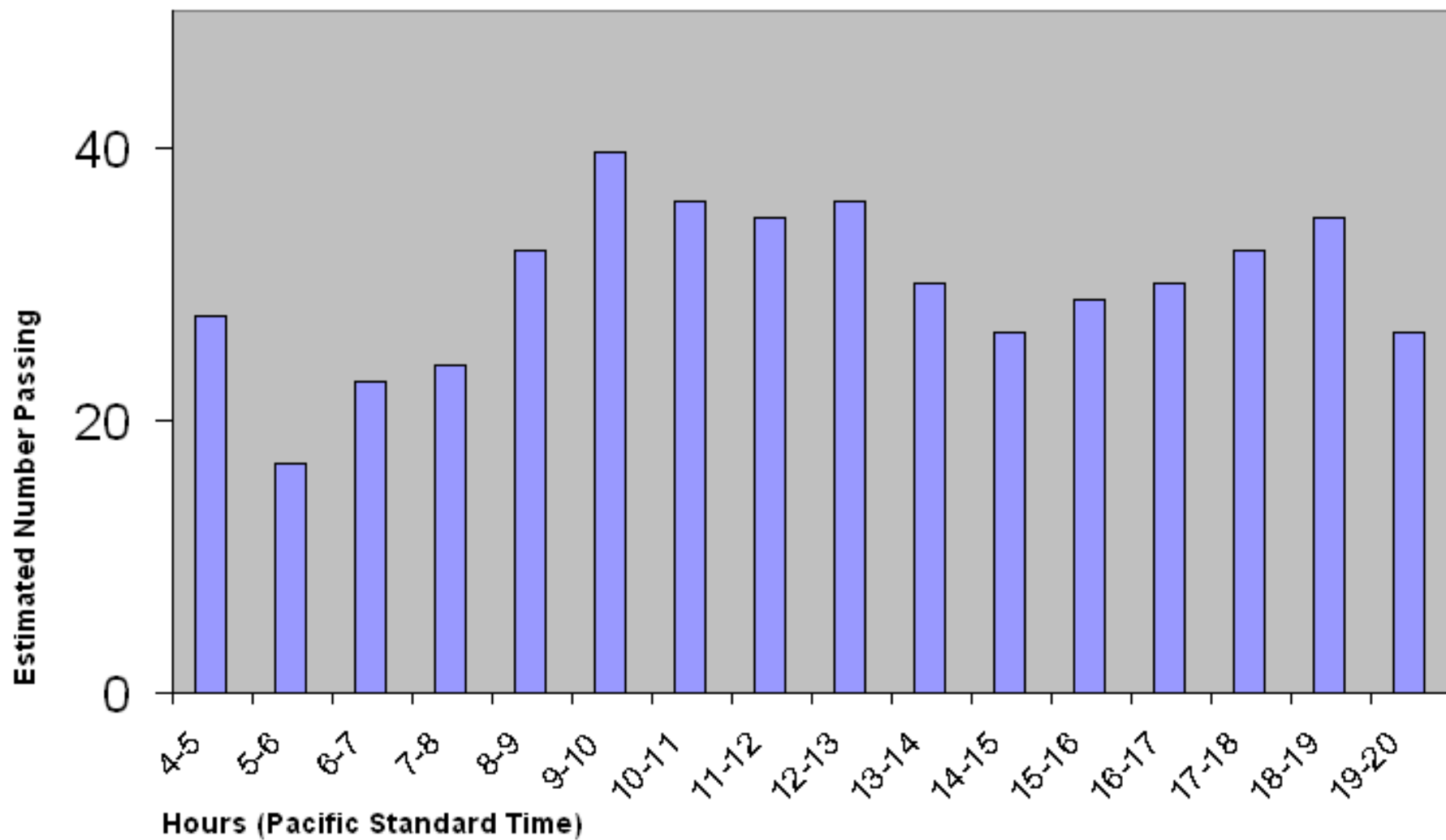
The Diel Distribution of the Sockeye Run (6/9-8/8)
through the Oregon Shore Fishladder at McNary Dam
2006 through 2008 Estimated Counts (111K Sockeye)



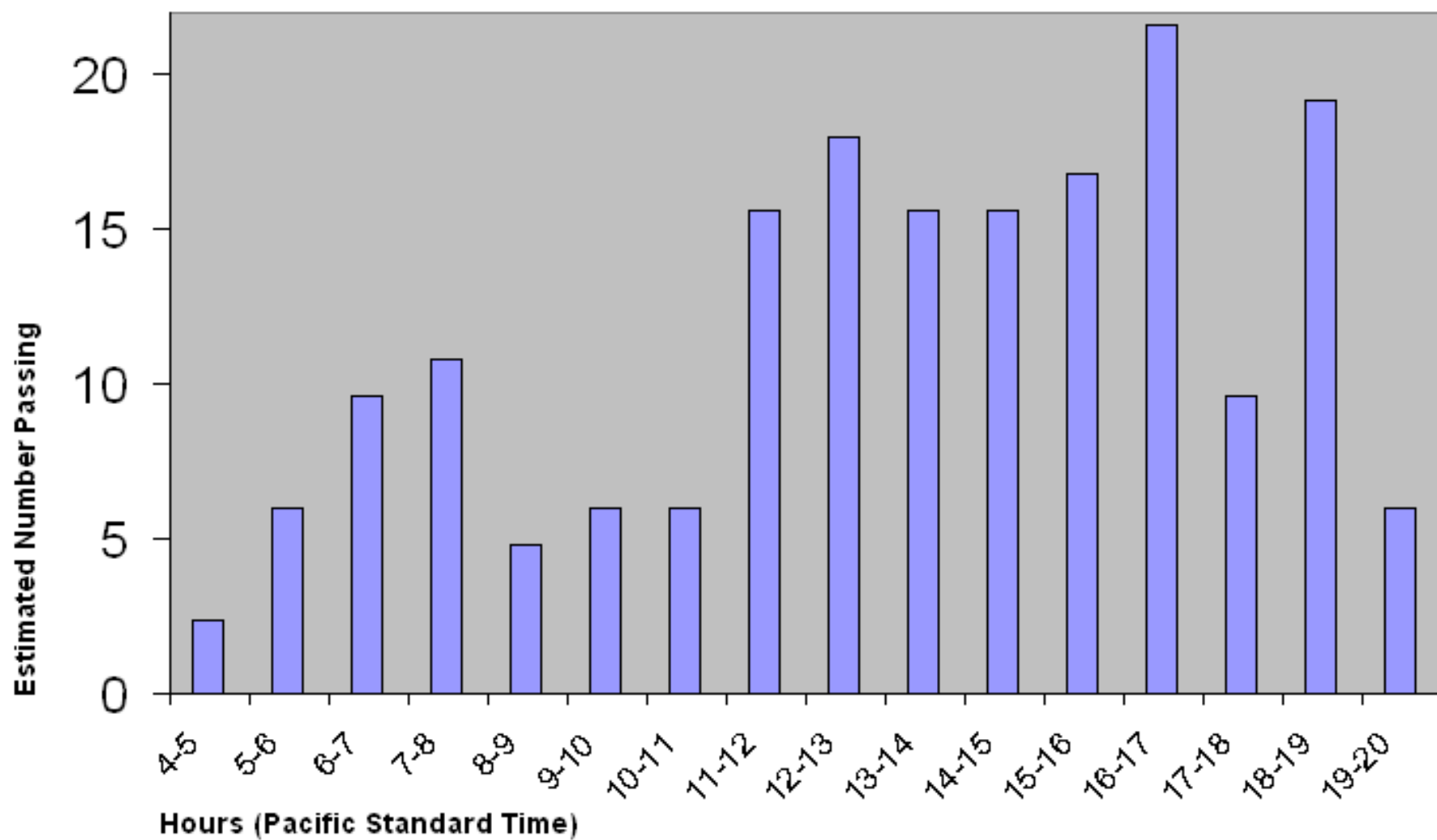
The Diel Distribution of the Sockeye Run (6/9-8/8),
through the Washington Shore Fishladder at McNary Dam
2006 through 2008 Estimated Counts (83K Sockeye)



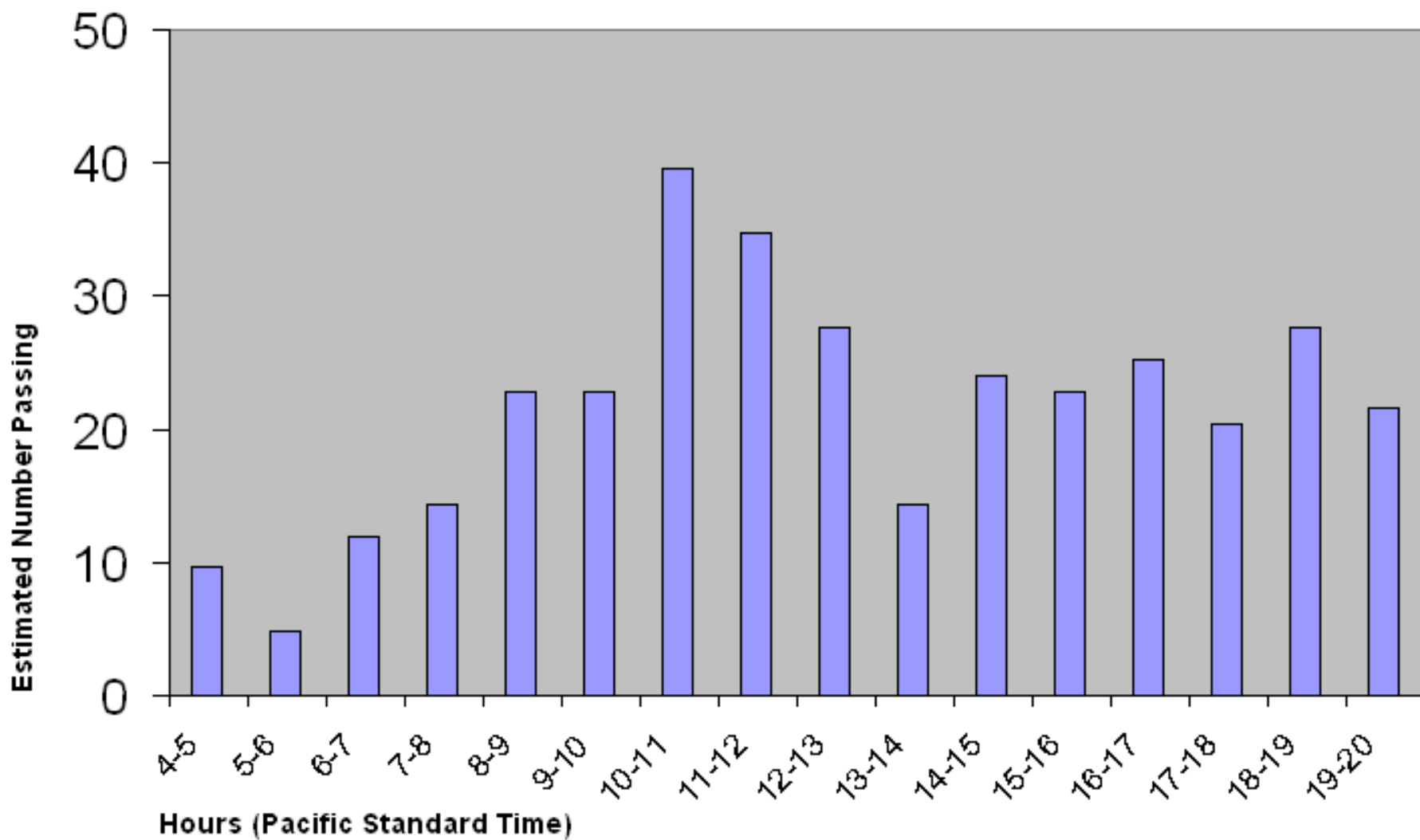
The Diel Distribution of the Sockeye Run (6/12-8/11)
through the South Fishladder at Ice Harbor Dam
2006 through 2008 Estimated Counts (479 Sockeye)



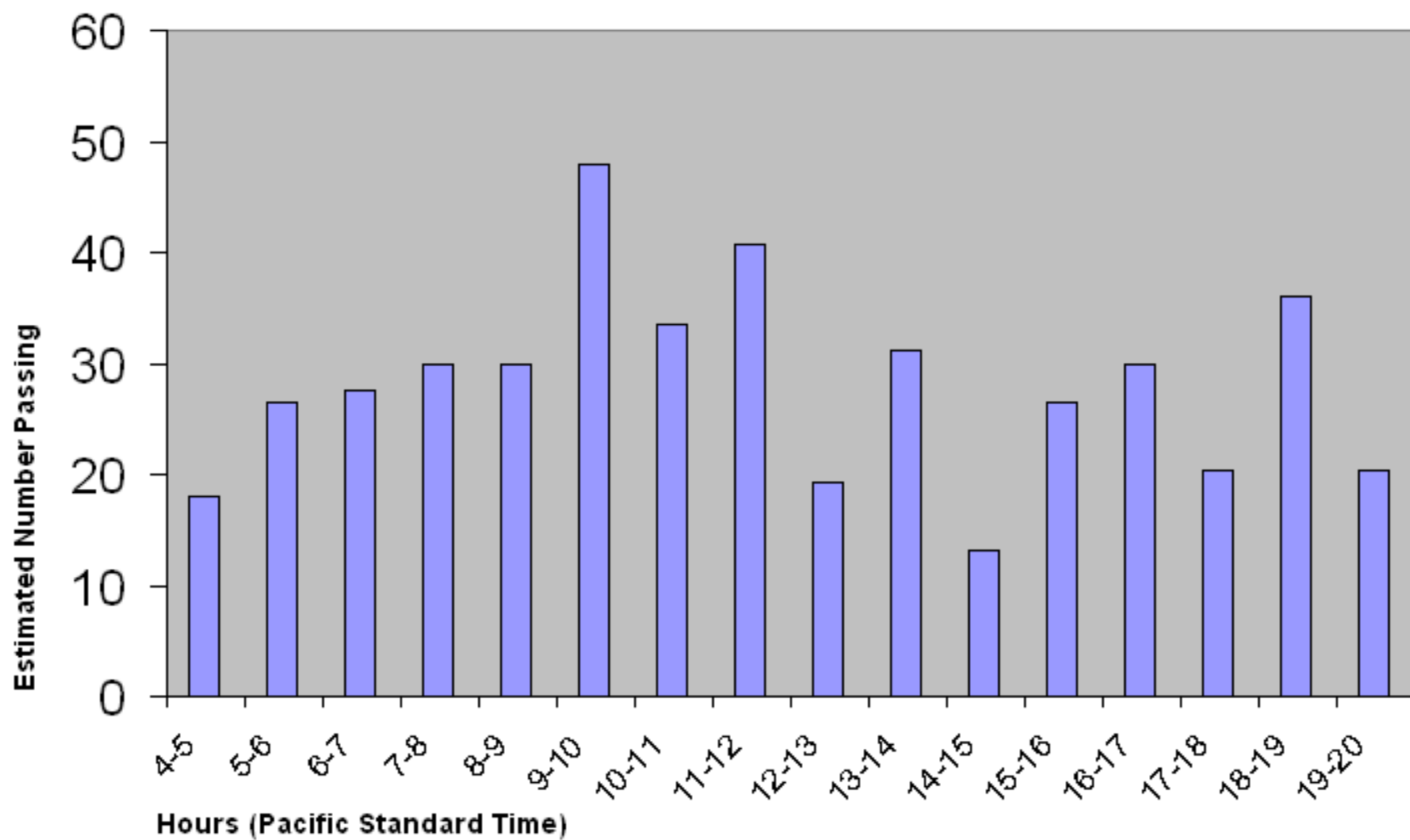
The Diel Distribution of the Sockeye Run (6/12-8/11)
through the North Fishladder at Ice Harbor Dam
2006 through 2008 Estimated Counts (184 Sockeye)



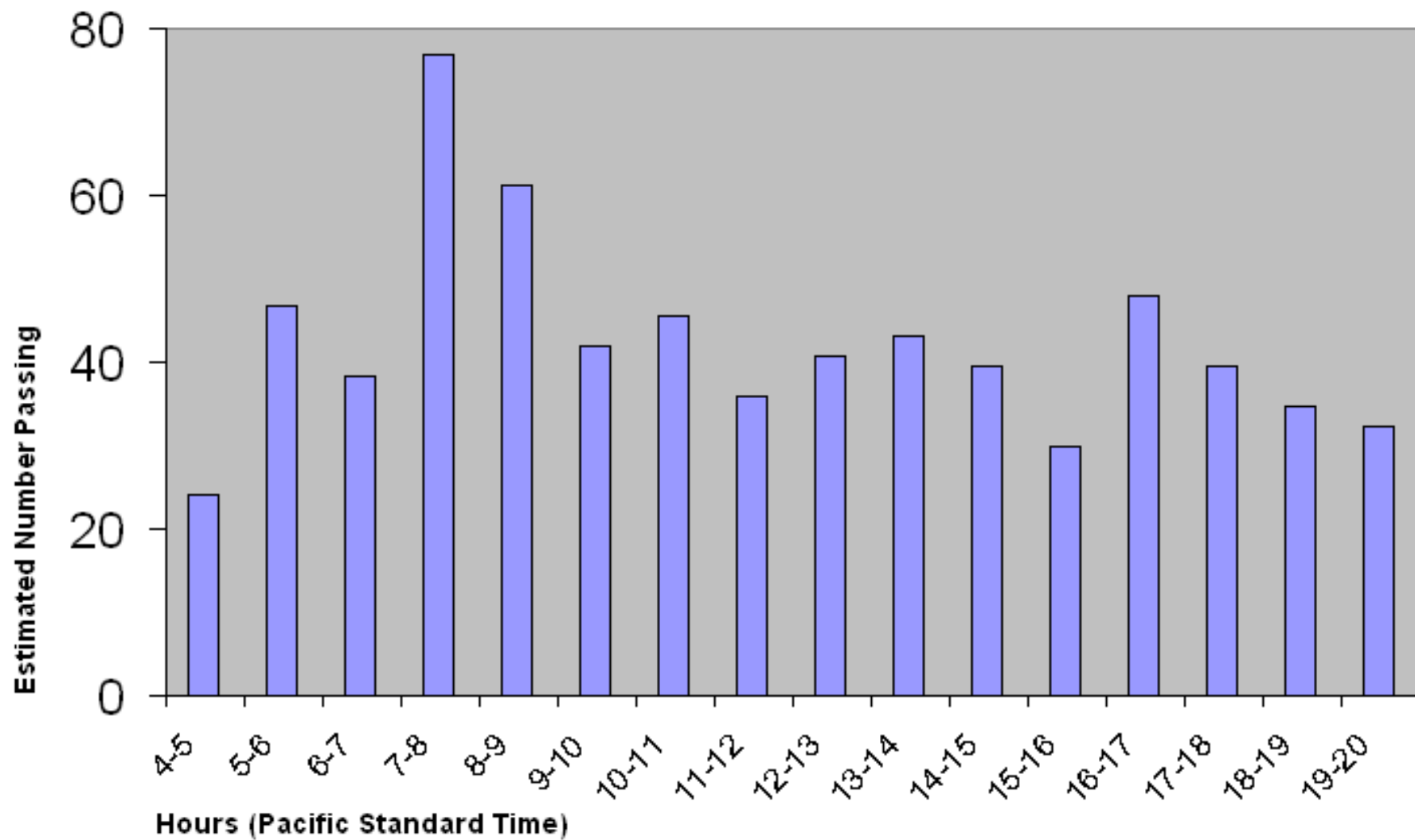
The Diel Distribution of the Sockeye Run (6/14-8/13)
through the South Fishladder at Lower Monumental Dam
2006 through 2008 Estimated Counts (344 Sockeye)



The Diel Distribution of the Sockeye Run (6/14-8/13)
through the North Fishladder at Lower Monumental Dam
2006 through 2008 Estimated Counts (451 Sockeye)



The Diel Distribution of the Sockeye Run (6/16-8/15)
through the Fishladder at Little Goose Dam
2006 through 2008 Estimated Counts (679 Sockeye)



The Diel Distribution of the Sockeye Run (6/18-8/17)
through the Fishladder at Lower Granite Dam
2006 through 2008 Estimated Counts (961 Sockeye)

