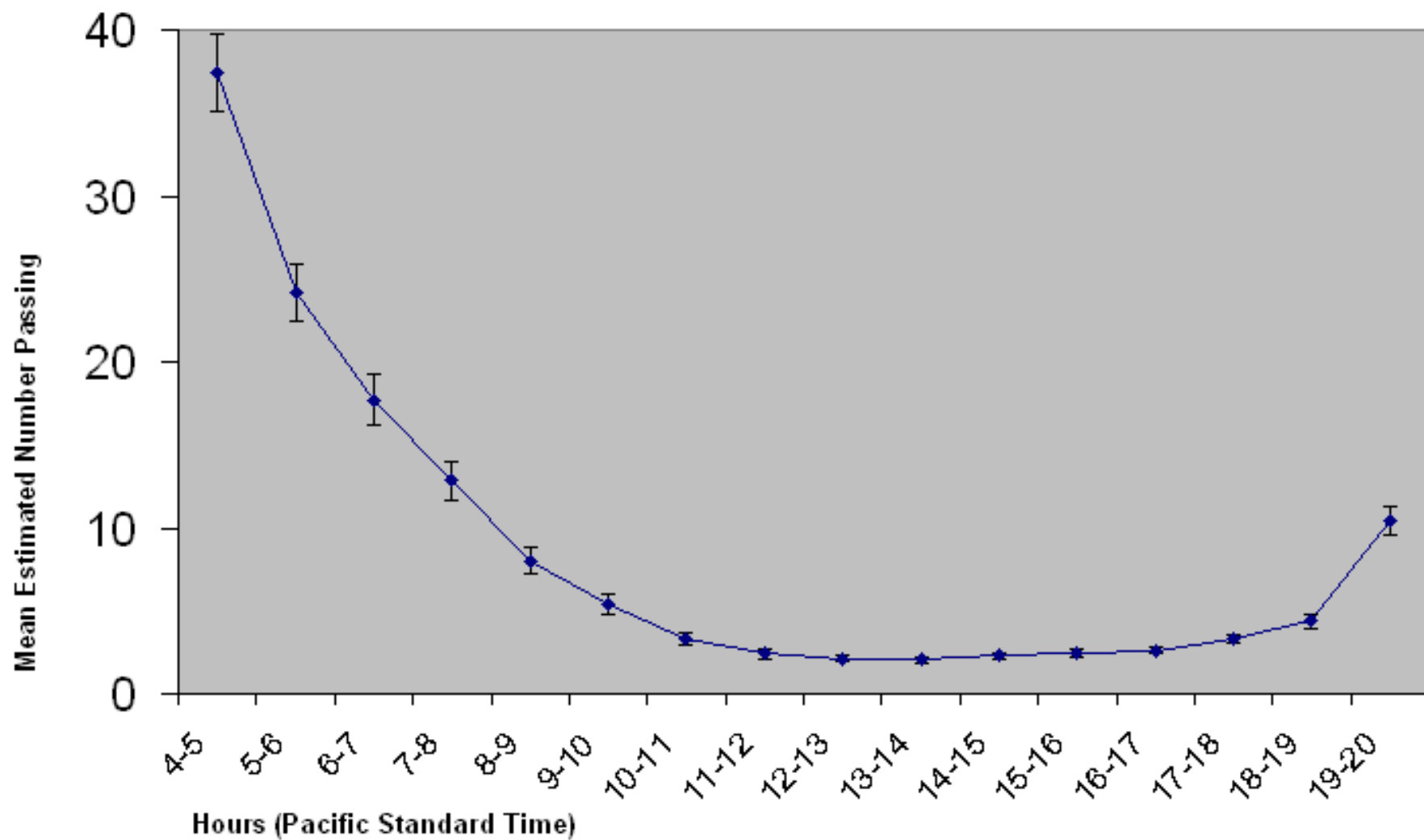
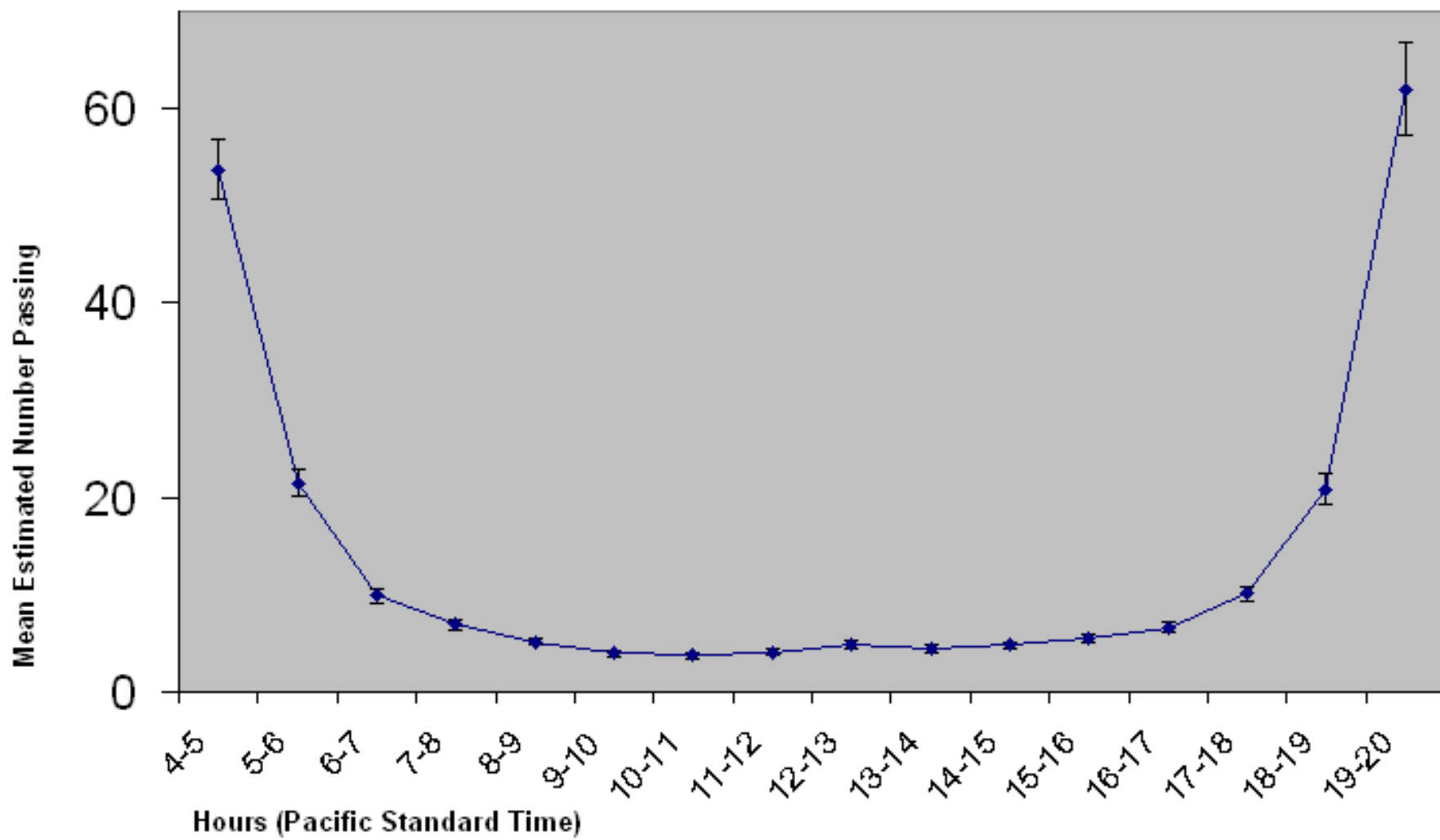


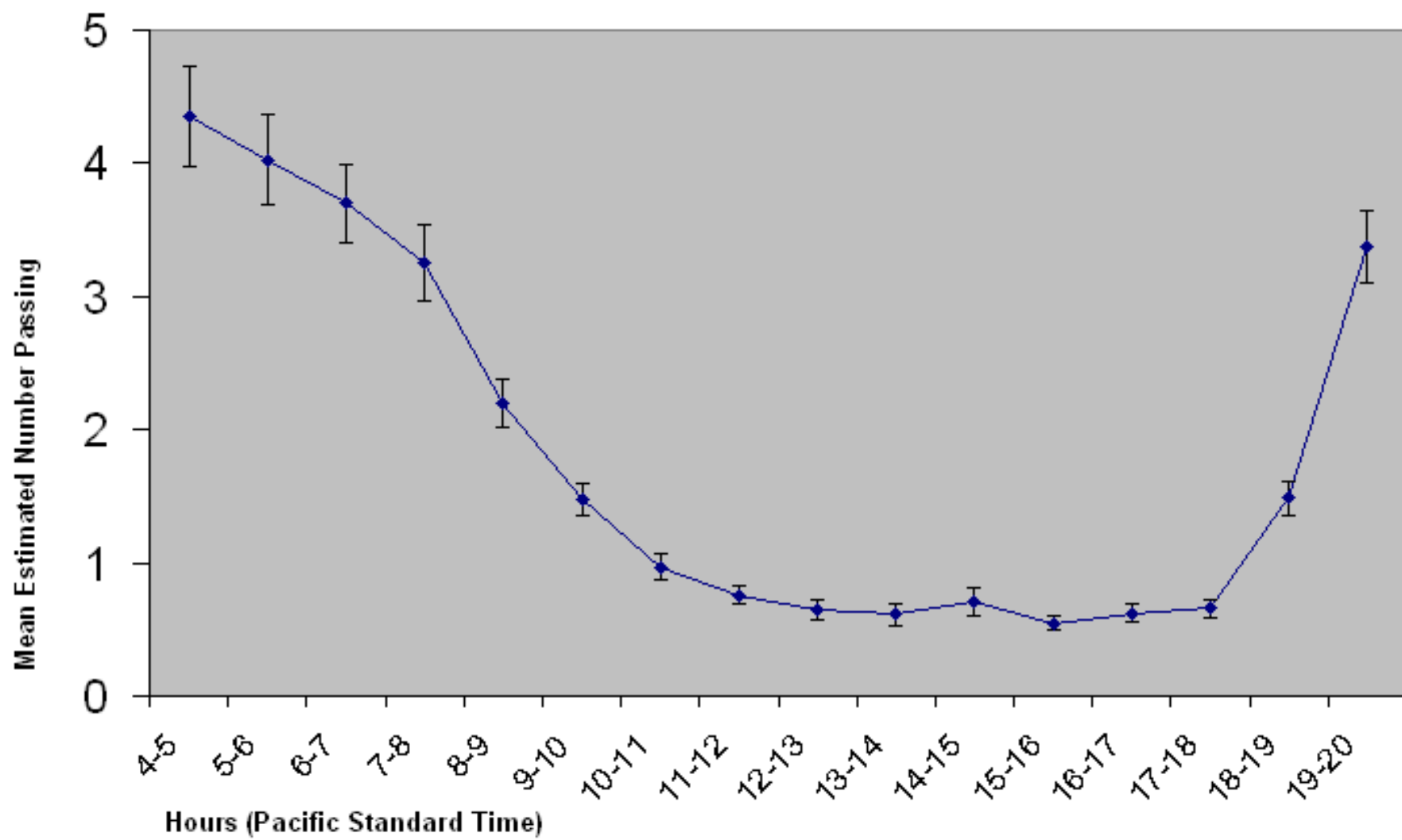
The Diel Distribution of the Lamprey Run (6/1-9/30)
through the Bradford Island Fishladder at Bonneville Dam
2005 through 2008 Estimated Counts (69K Lamprey)



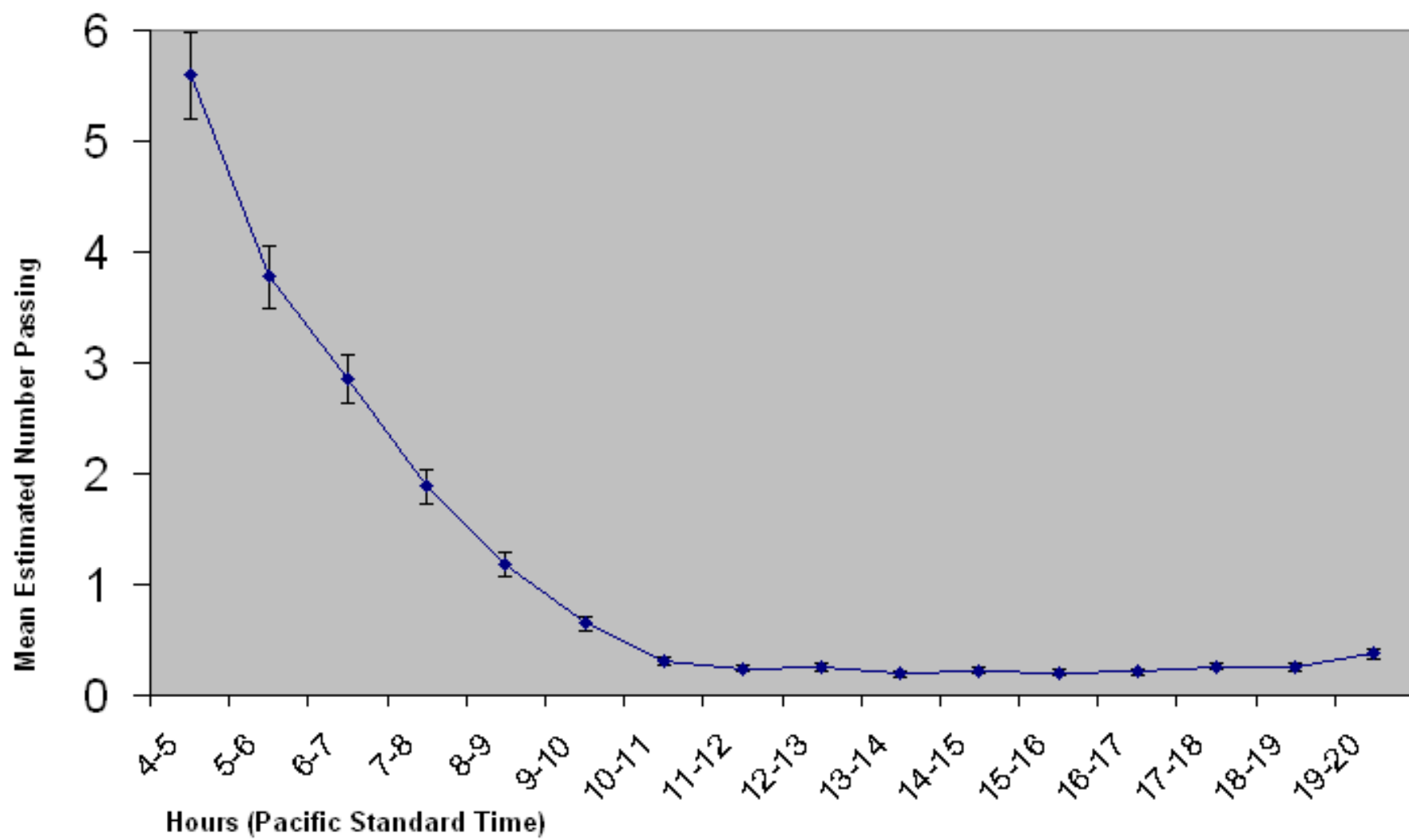
The Diel Distribution of the Lamprey Run (6/1-9/30)
through the Washington Shore Fishladder at Bonneville Dam
2005 through 2008 Estimated Counts (111K Lamprey)



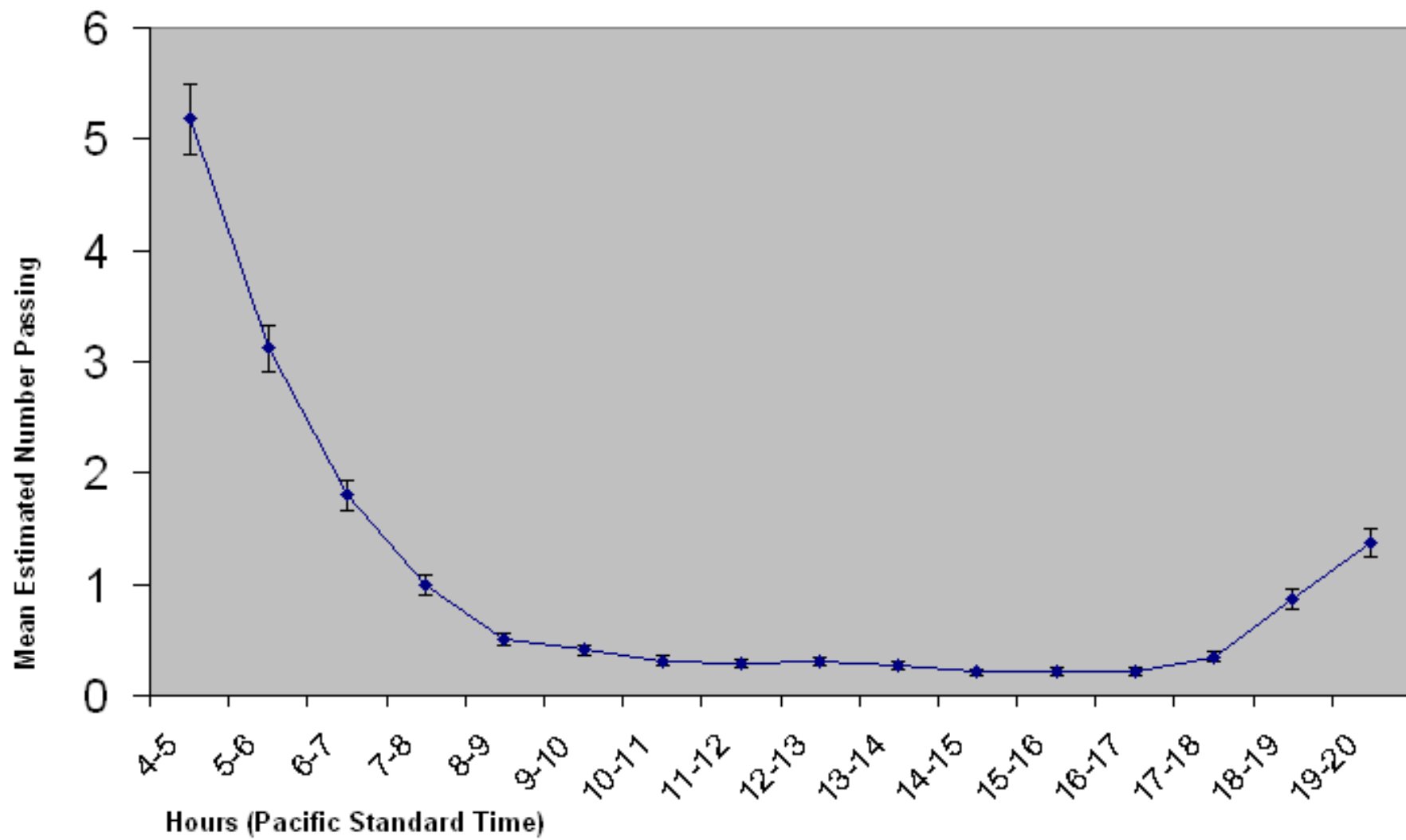
The Diel Distribution of the Lamprey Run (6/4-10/31)
through East Fishladder at The Dalles Dam
2005 through 2008 Estimated Counts (18K Lamprey)



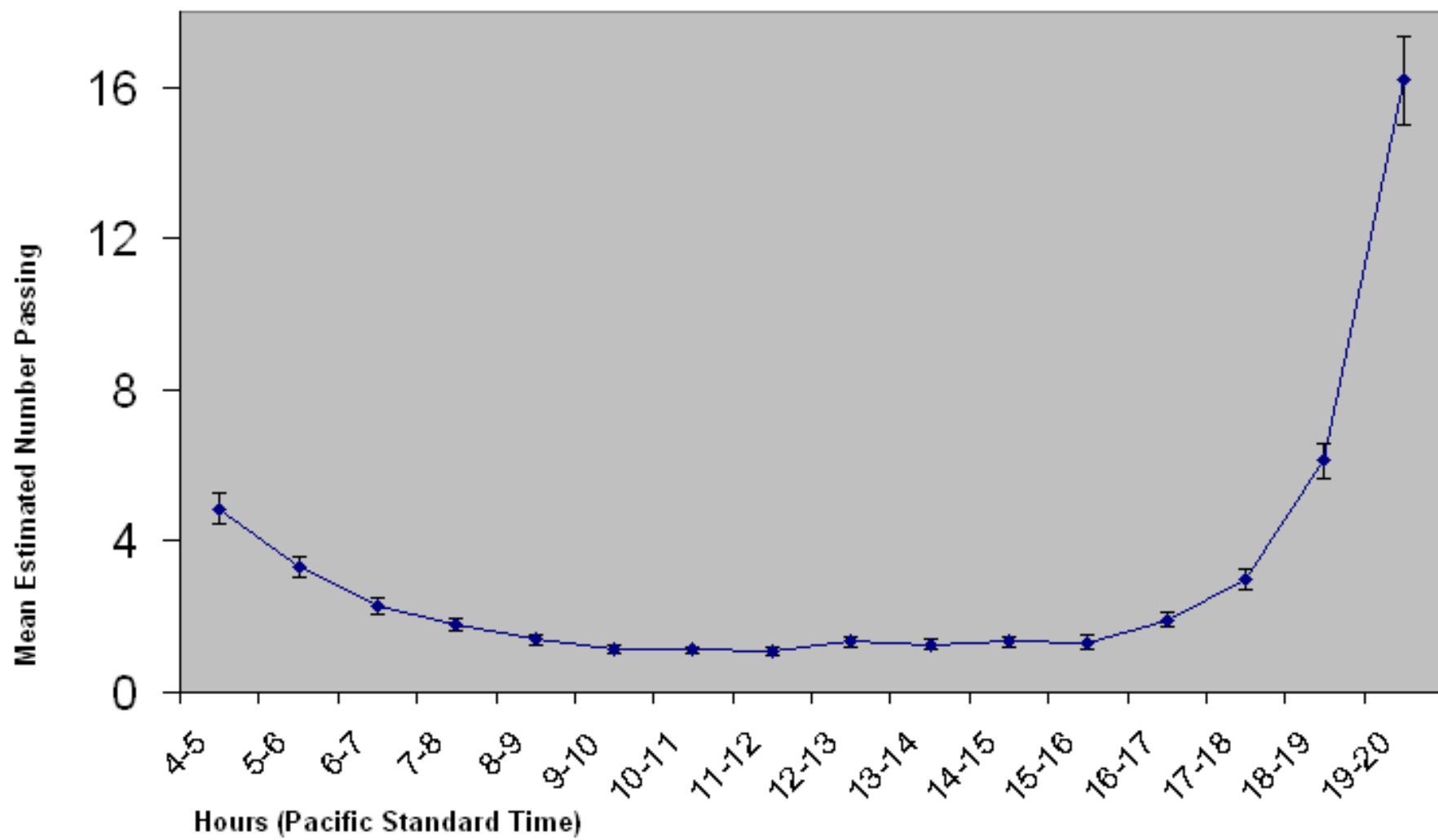
The Diel Distribution of the Lamprey Run (6/4-10/31)
through the North Fishladder at The Dalles Dam
2005 through 2008 Estimated Counts (11K Lamprey)



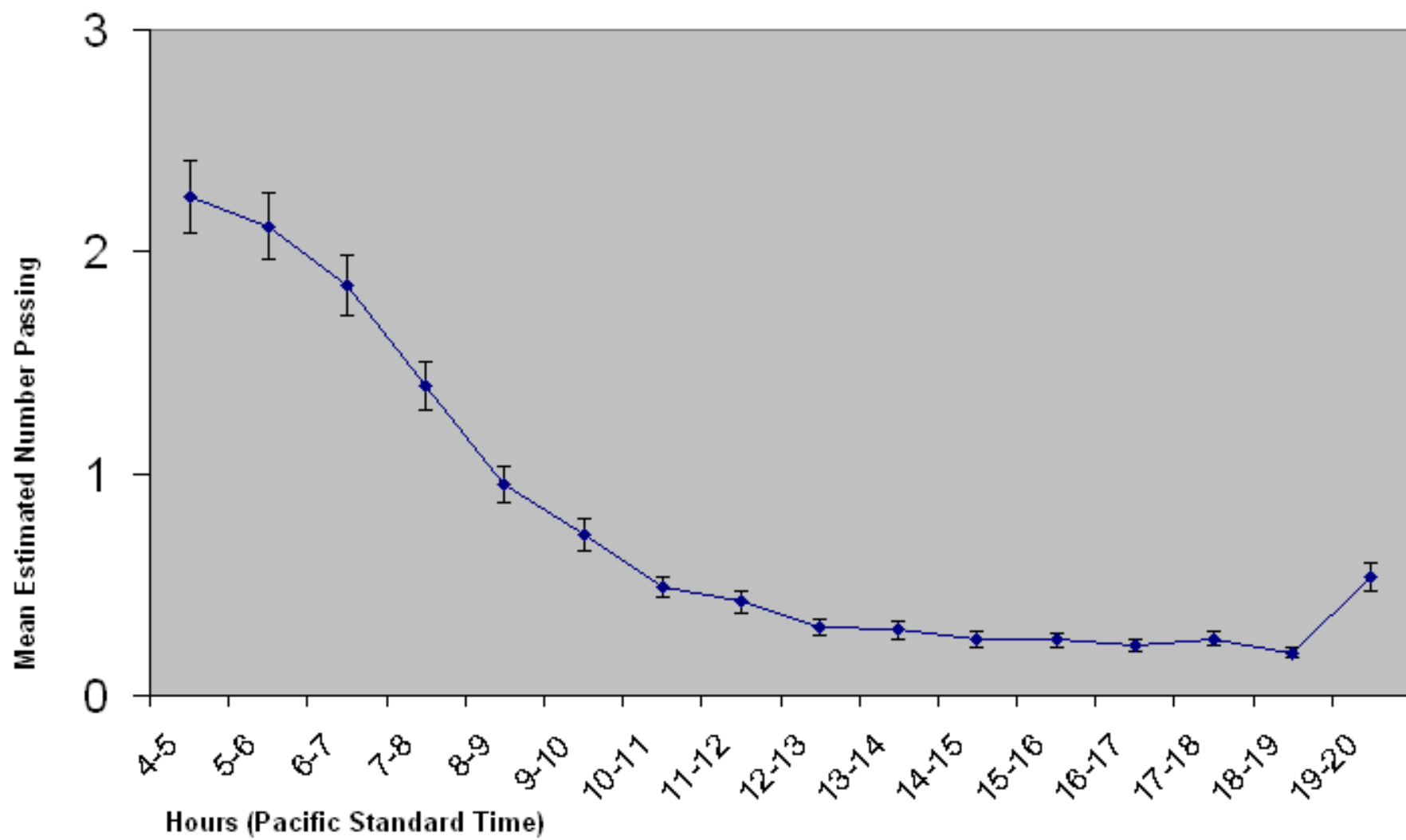
The Diel Distribution of the Lamprey Runs (6/6-10/31)
through the South Fishladder at John Day Dam
2005 through 2008 Estimated Counts (9K Lamprey)



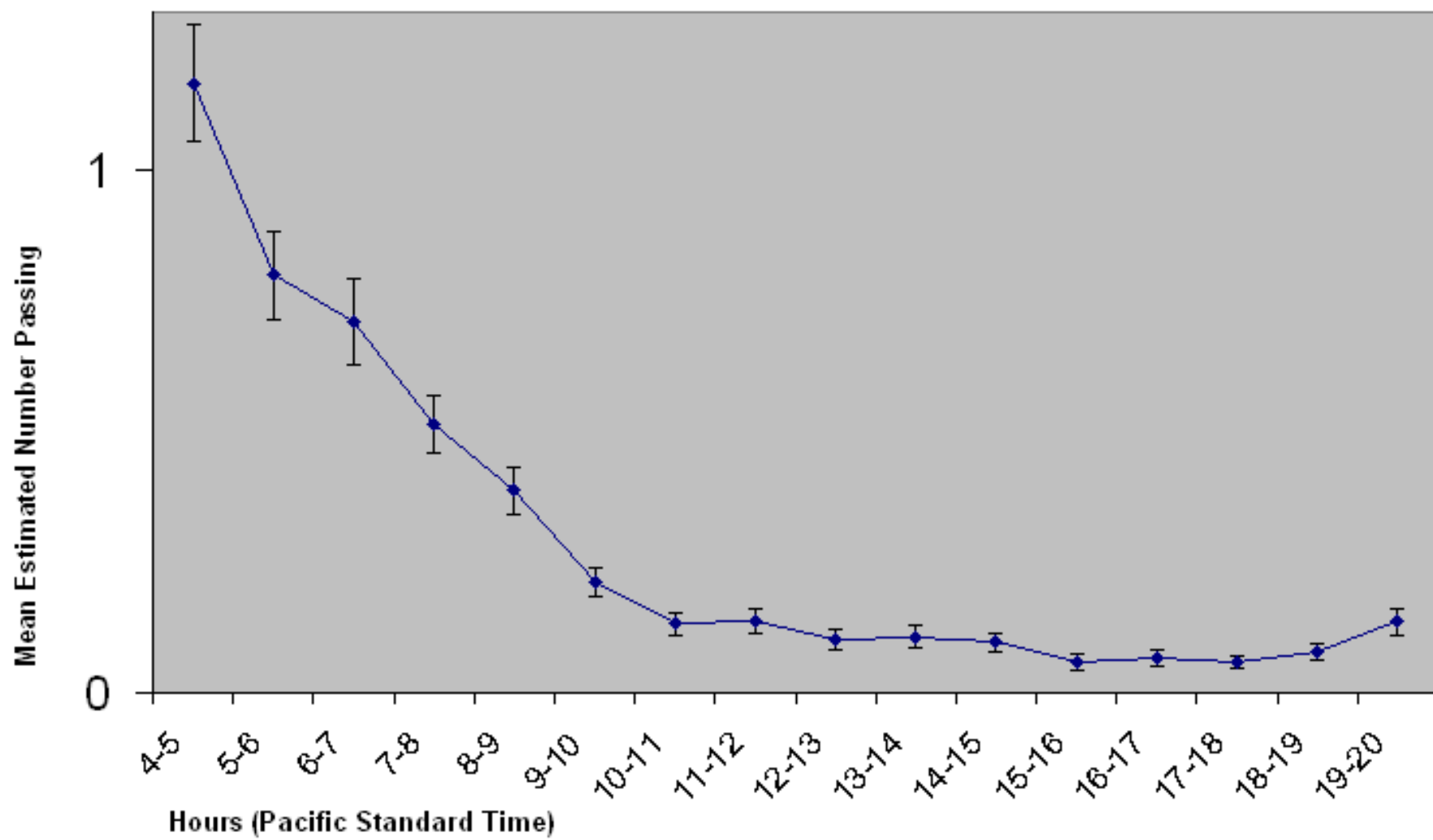
The Diel Distribution of the Lamprey Run (6/6-10/31)
through the North Fishladder at John Day Dam
2005, 2007, and 2008 Estimated Counts (22K Lamprey)



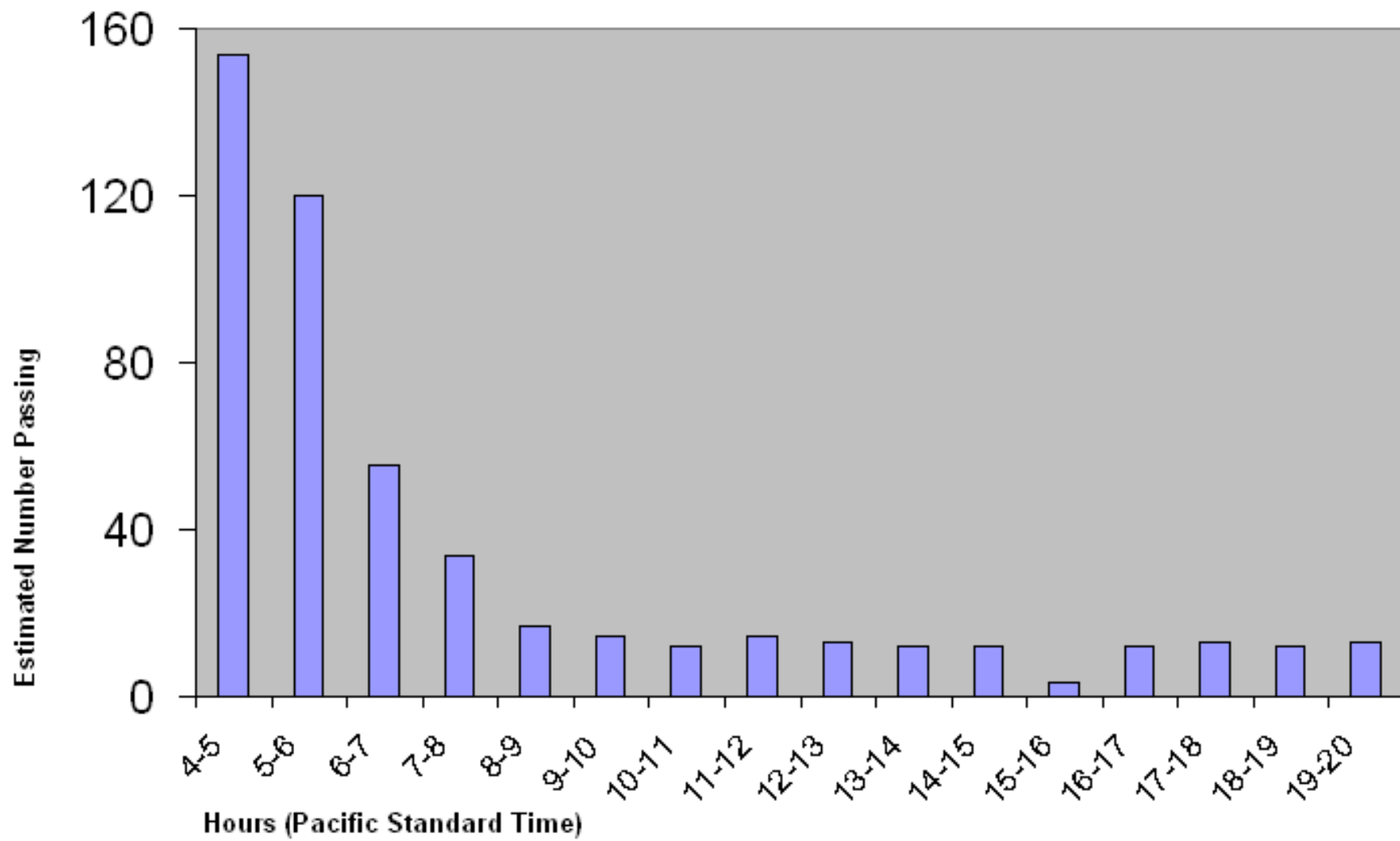
The Diel Distribution of the Lamprey Run (6/9-10/31)
through the Oregon Shore Fishladder at McNary Dam
2006 through 2008 Estimated Counts (5K Lamprey)



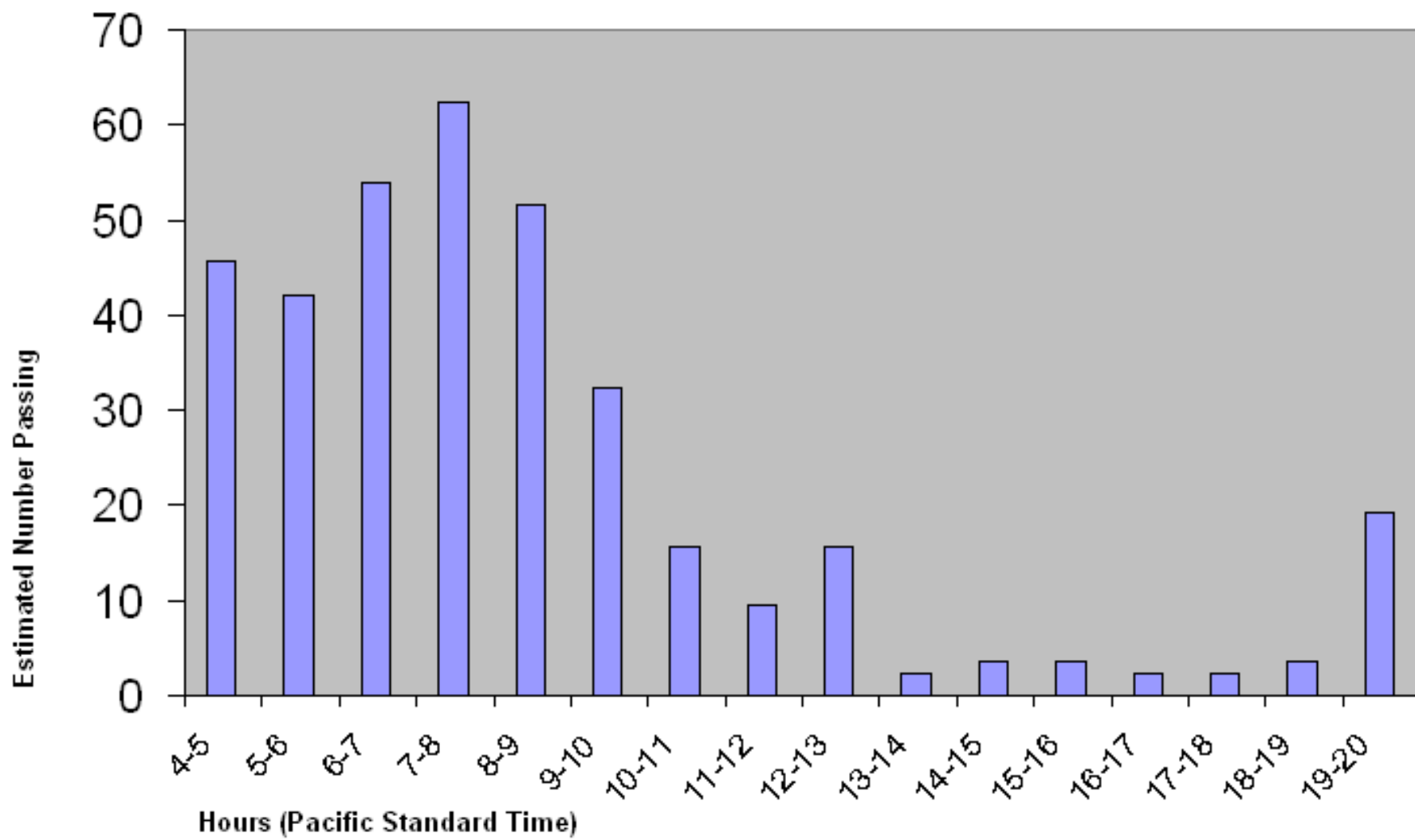
The Diel Distribution of the Lamprey Run (6/9-10/31),
through the Washington Shore Fishladder at McNary Dam
2006 through 2008 Estimated Counts (2K Lamprey)



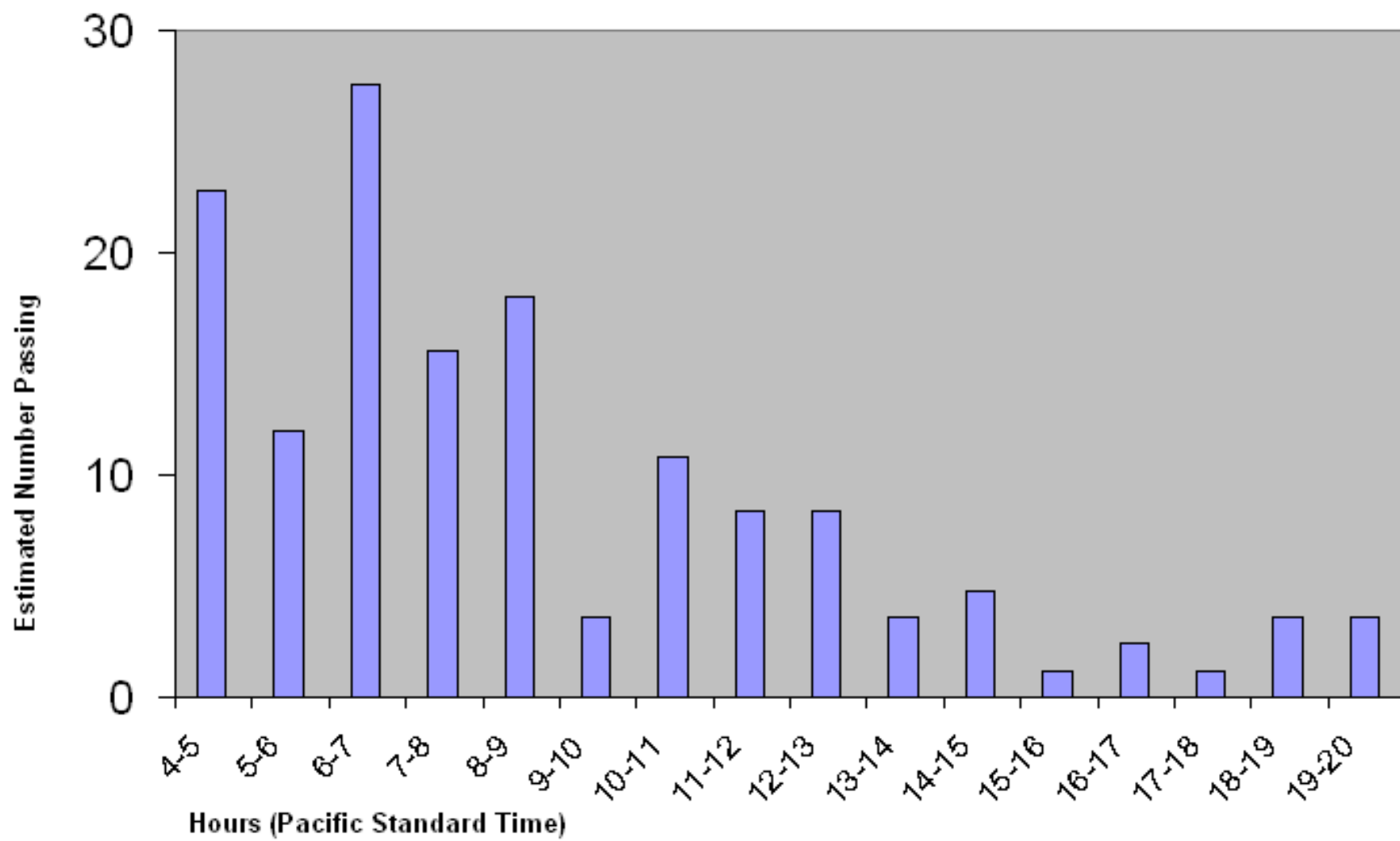
The Diel Distribution of the Lamprey Run (6/12-10/31)
through the South Fishladder at Ice Harbor Dam
2006 through 2008 Estimated Counts (511 Lamprey)



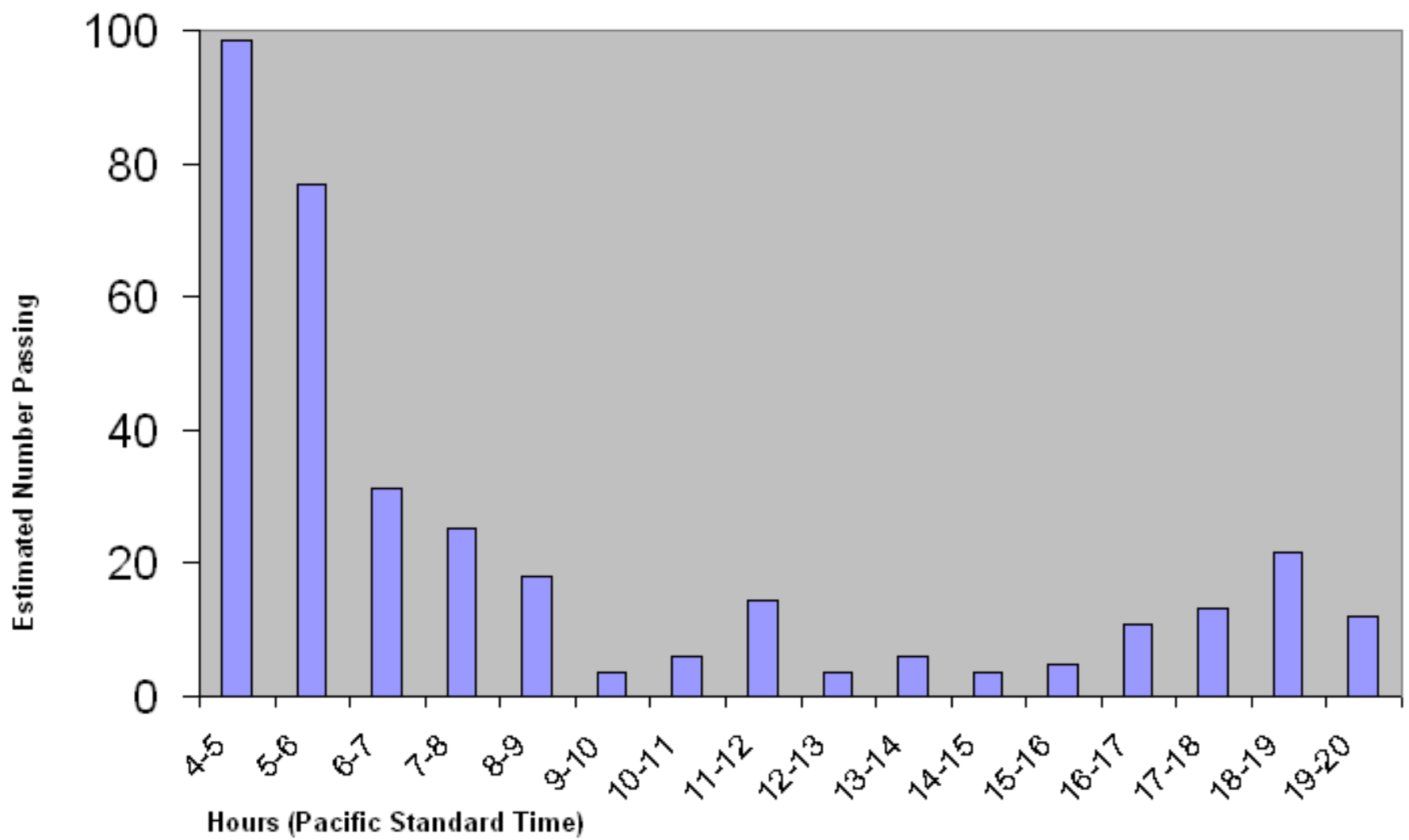
The Diel Distribution of the Lamprey Run (6/12-10/31)
through the North Fishladder at Ice Harbor Dam
2006 through 2008 Estimated Counts (366 Lamprey)



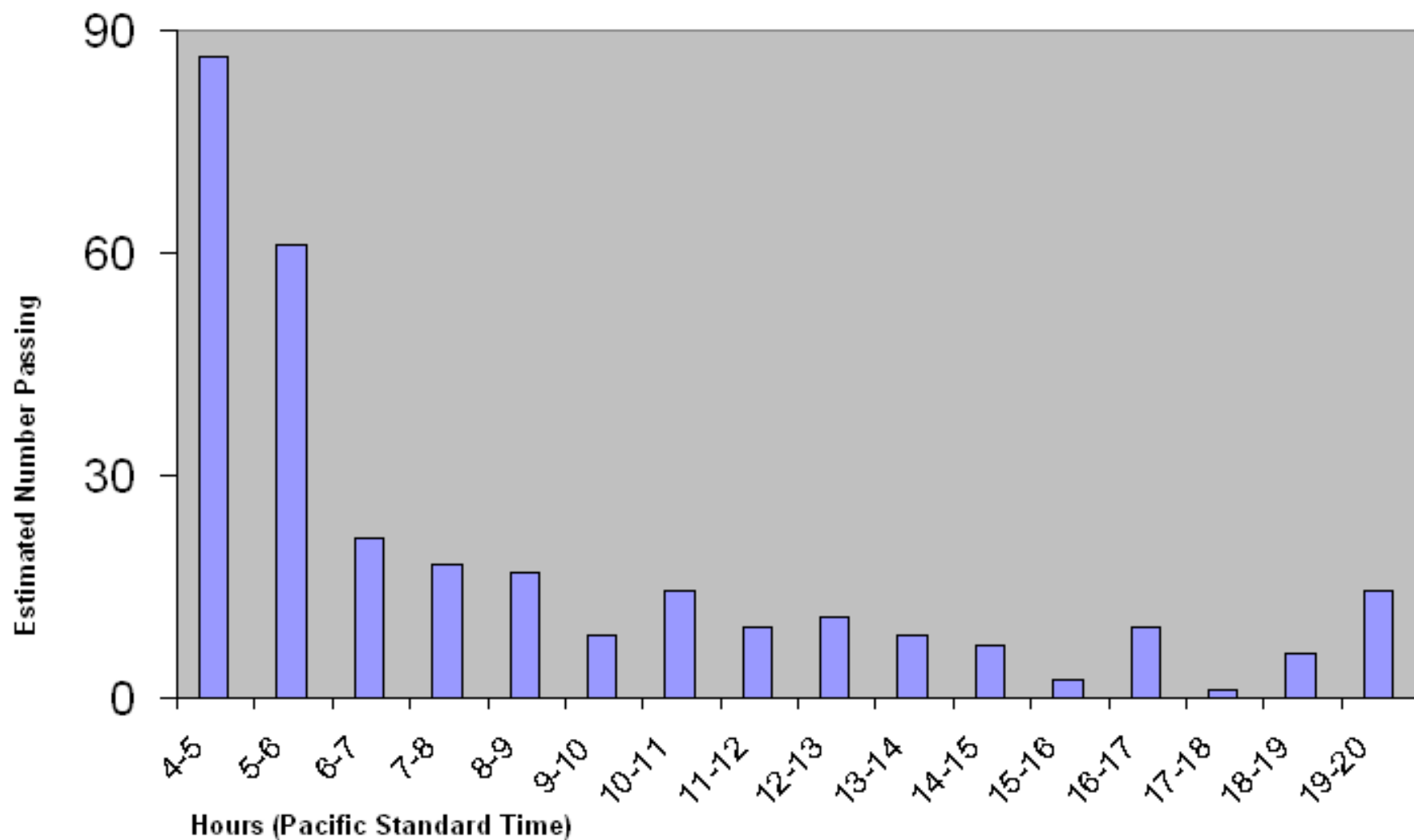
The Diel Distribution of the Lamprey Run (6/14-10/31)
through the South Fishladder at Lower Monumental Dam
2006 through 2008 Estimated Counts (148 Lamprey)



The Diel Distribution of the Lamprey Run (6/14-10/31)
through the North Fishladder at Lower Monumental Dam
2006 through 2008 Estimated Counts (349 Lamprey)



The Diel Distribution of the Lamprey Run (6/16-10/31)
through the Fishladder at Little Goose Dam
2006 through 2008 Estimated Counts (296 Lamprey)



The Diel Distribution of the Lamprey Run (6/18-10/31)
through the Fishladder at Lower Granite Dam
2006 through 2008 Estimated Counts (166 Lamprey)

