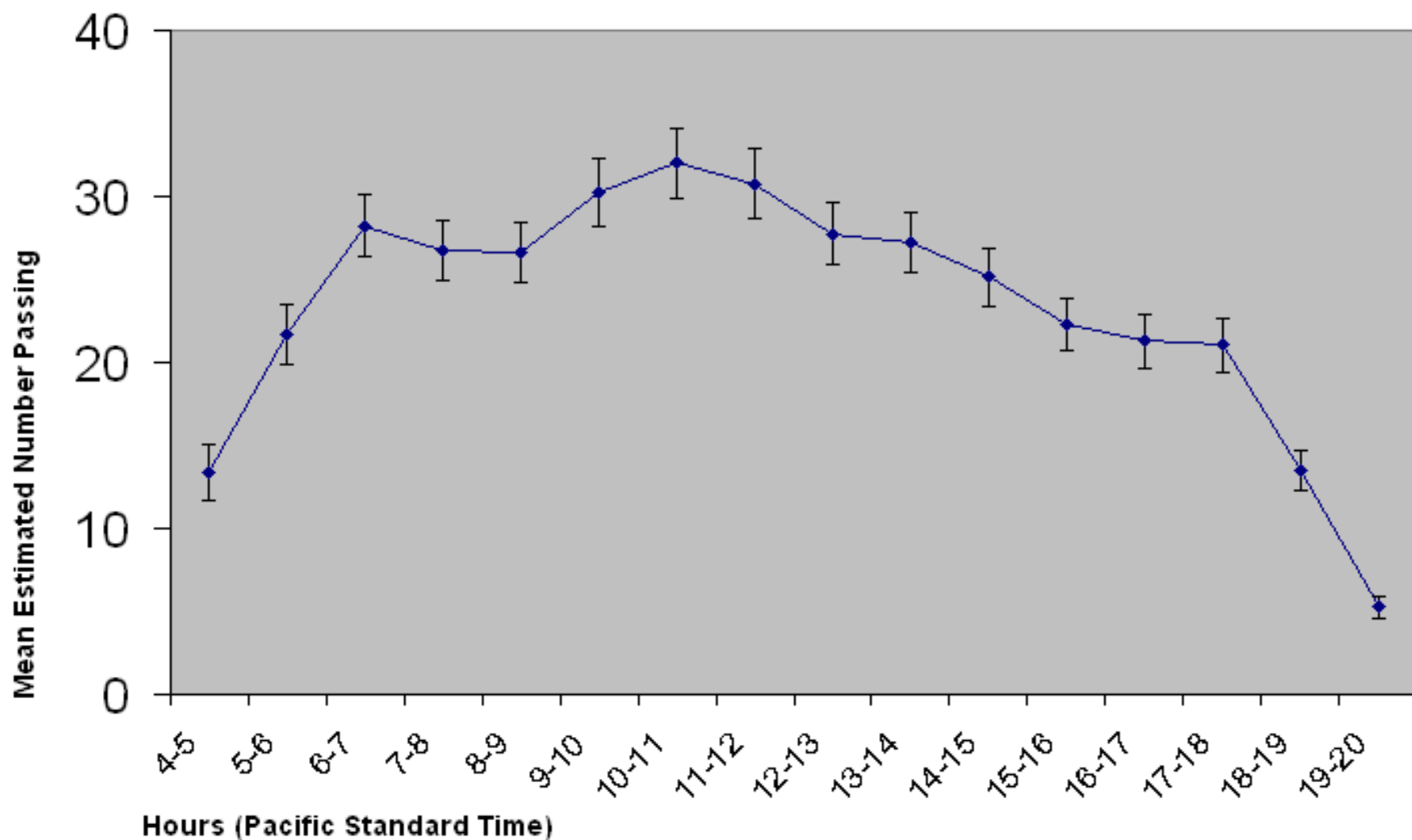
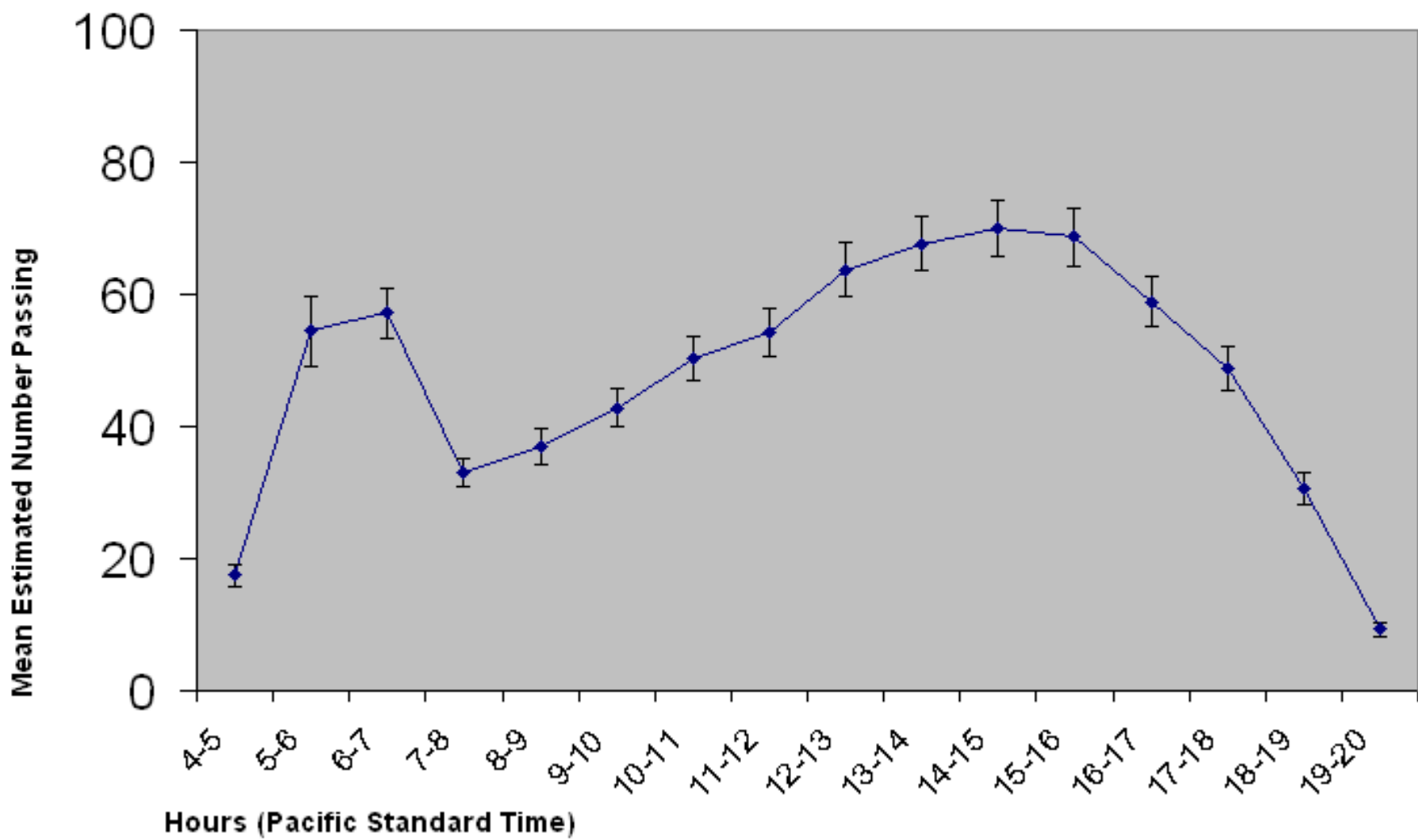


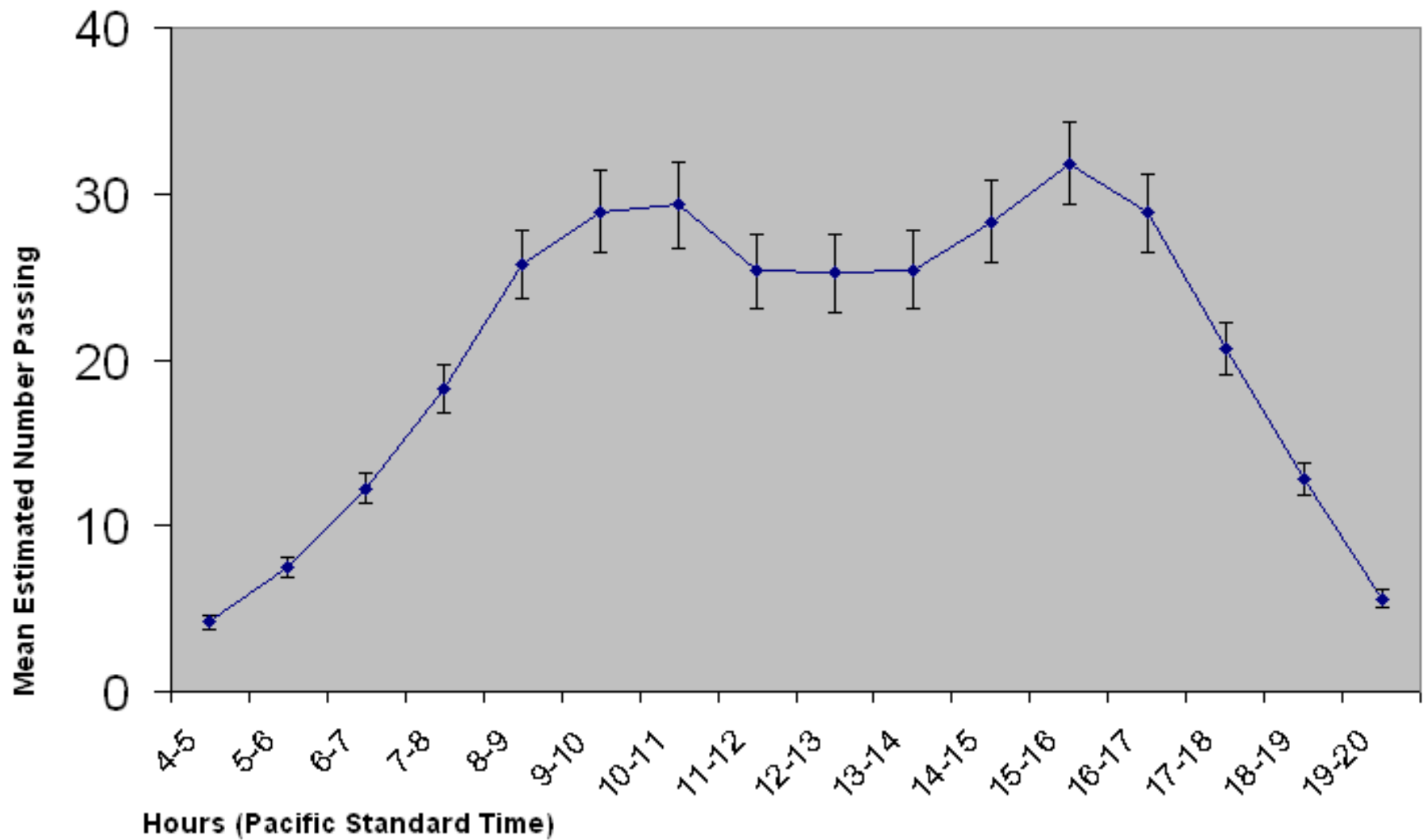
The Diel Distribution of the Coho Run (8/1-11/30)
through the Bradford Island Fishladder at Bonneville Dam
2005 through 2008 Estimated Counts (160K Coho)



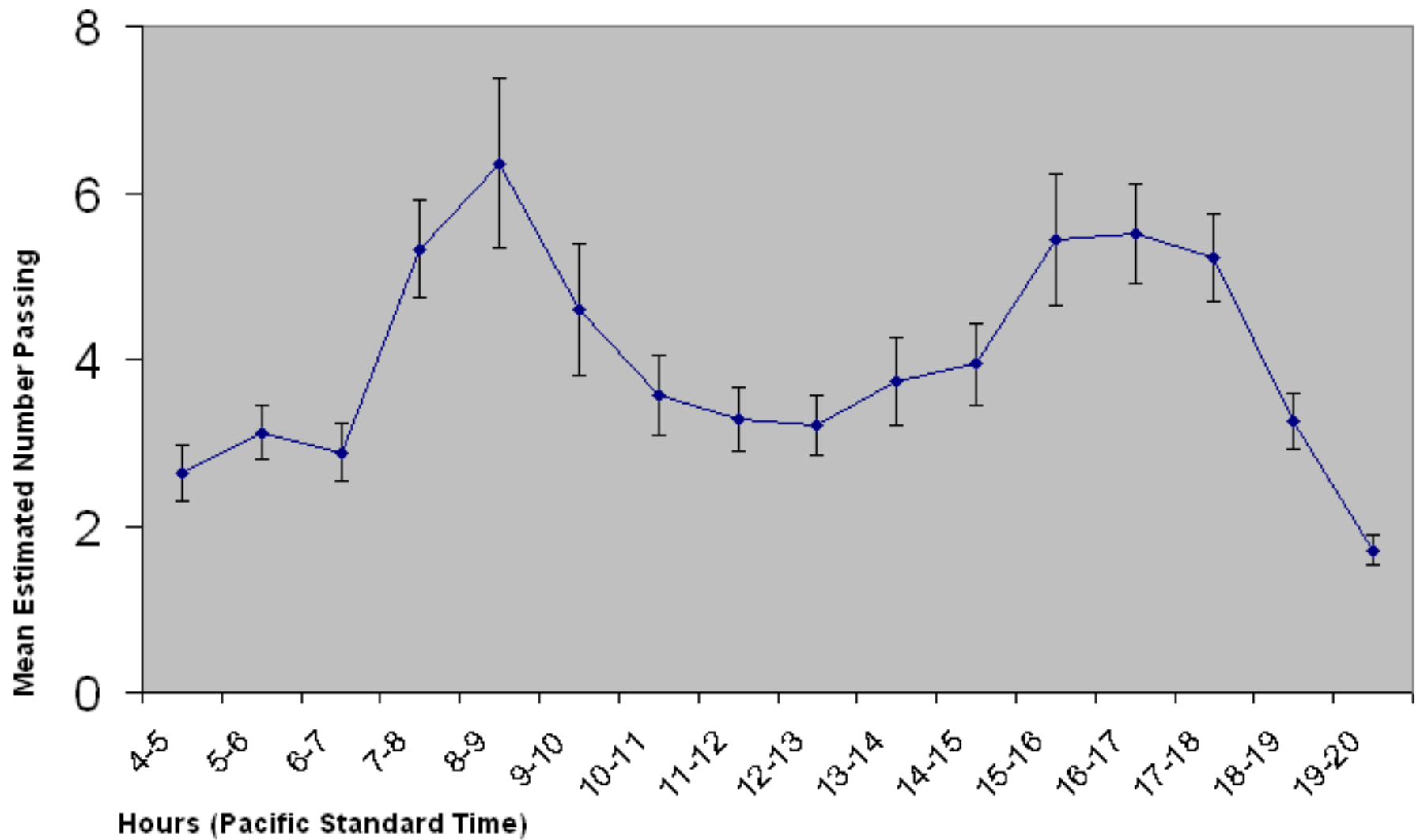
The Diel Distribution of the Coho Run (8/1-11/30)
through the Washington Shore Fishladder at Bonneville Dam
2005 through 2008 Estimated Counts (327K Coho)



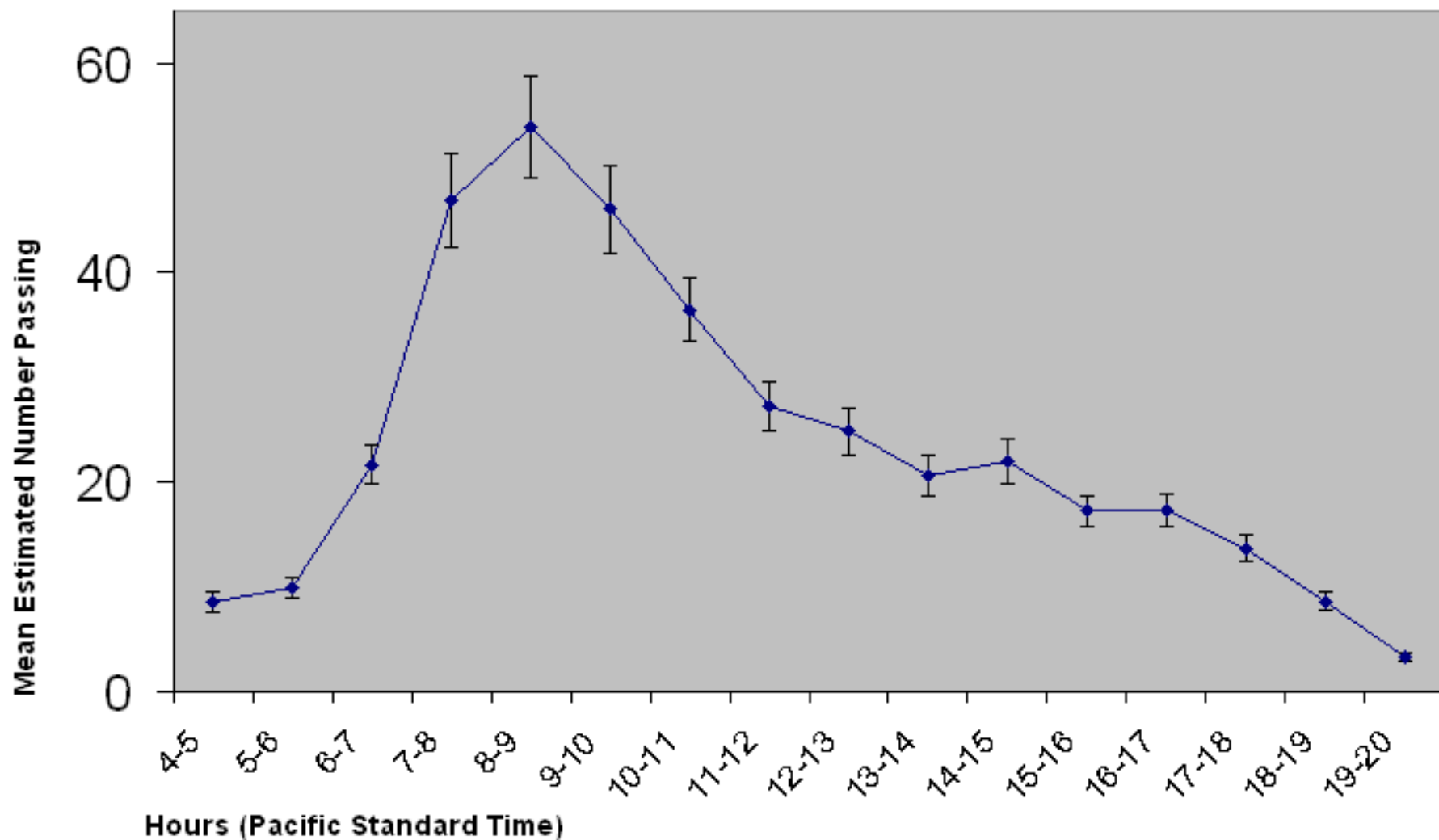
The Diel Distribution of the Coho Run (8/1-10/31)
through East Fishladder at The Dalles Dam
2005 through 2008 Estimated Counts (121K Coho)



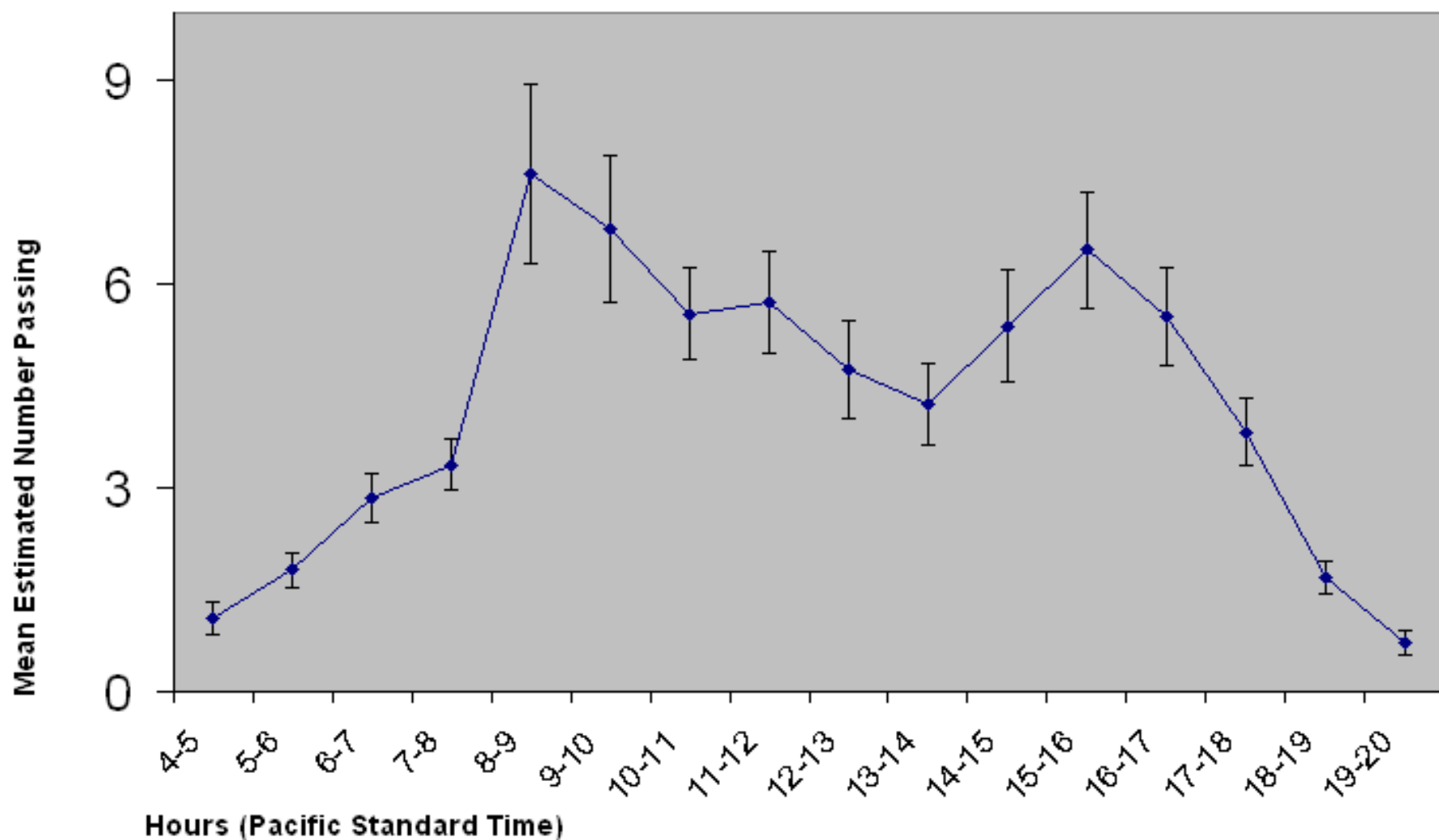
The Diel Distribution of the Coho Run (8/1-10/31)
through the North Fishladder at The Dalles Dam
2005 through 2008 Estimated Counts (23K Coho)



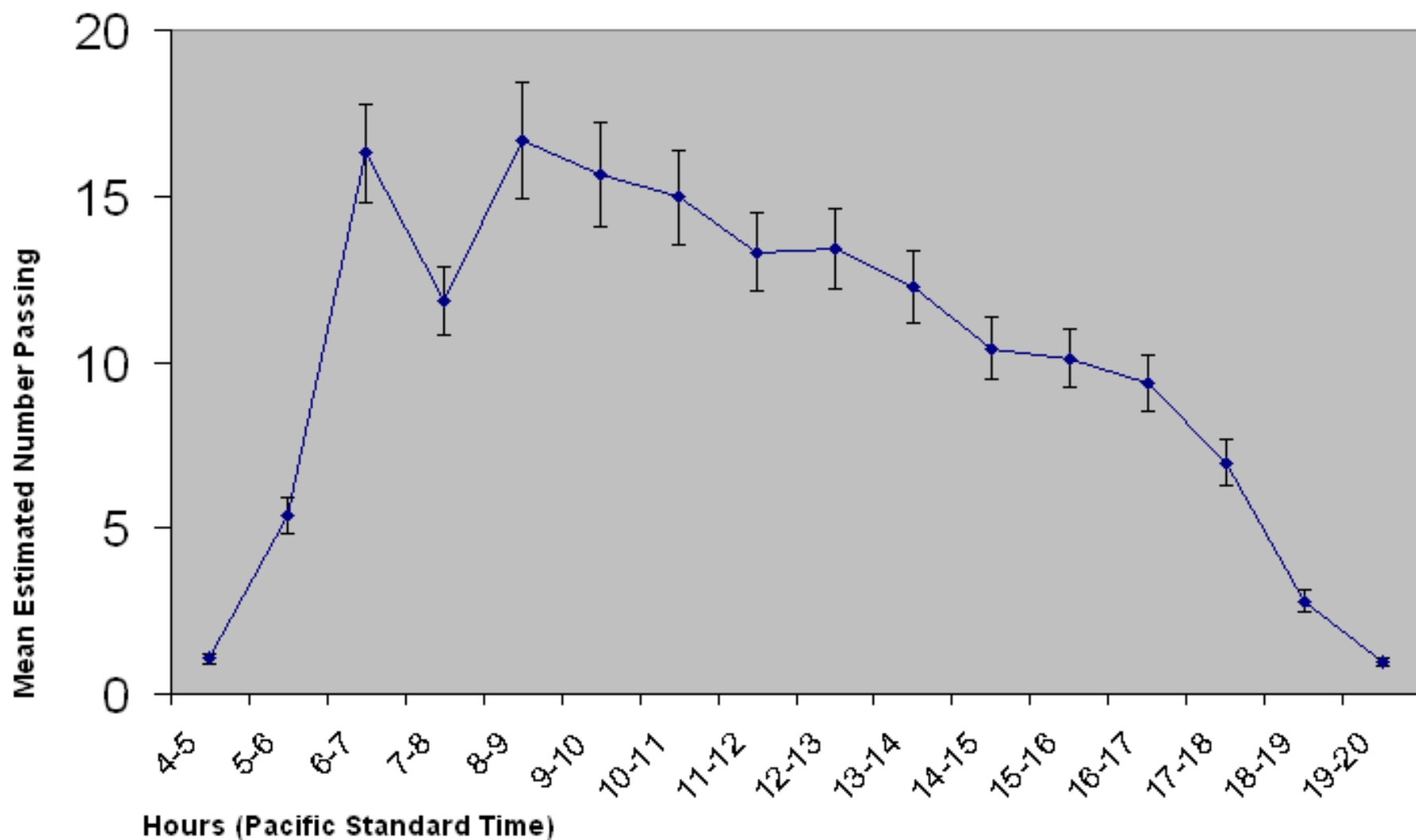
The Diel Distribution of the Coho Run (8/1-10/31)
through the South Fishladder at John Day Dam
2005 through 2008 Estimated Counts (130K Coho)



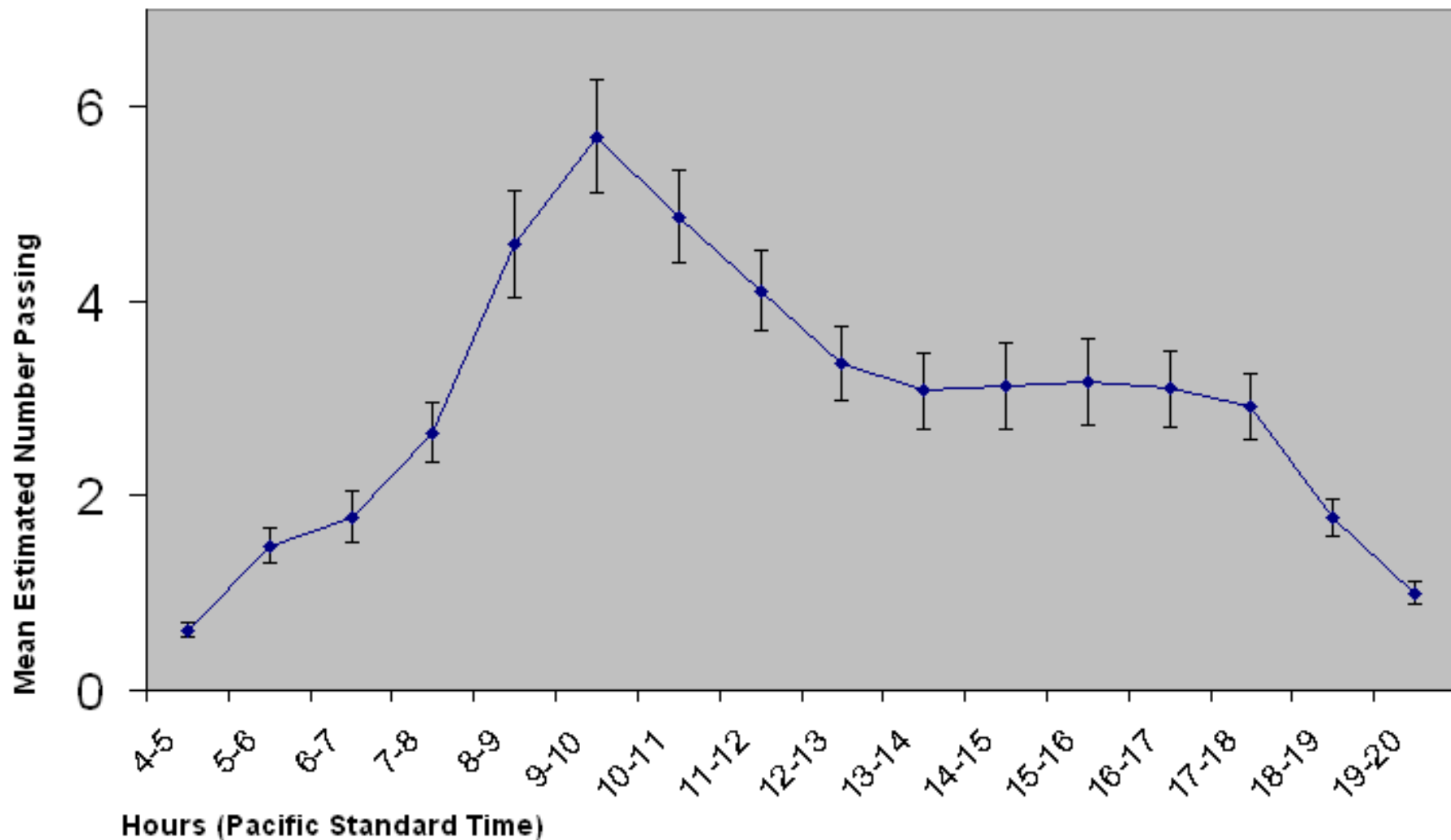
The Diel Distribution of the Coho Run (8/1-10/31)
through the North Fishladder at John Day Dam
2005, 2007, and 2008 Estimated Counts (19K Coho)



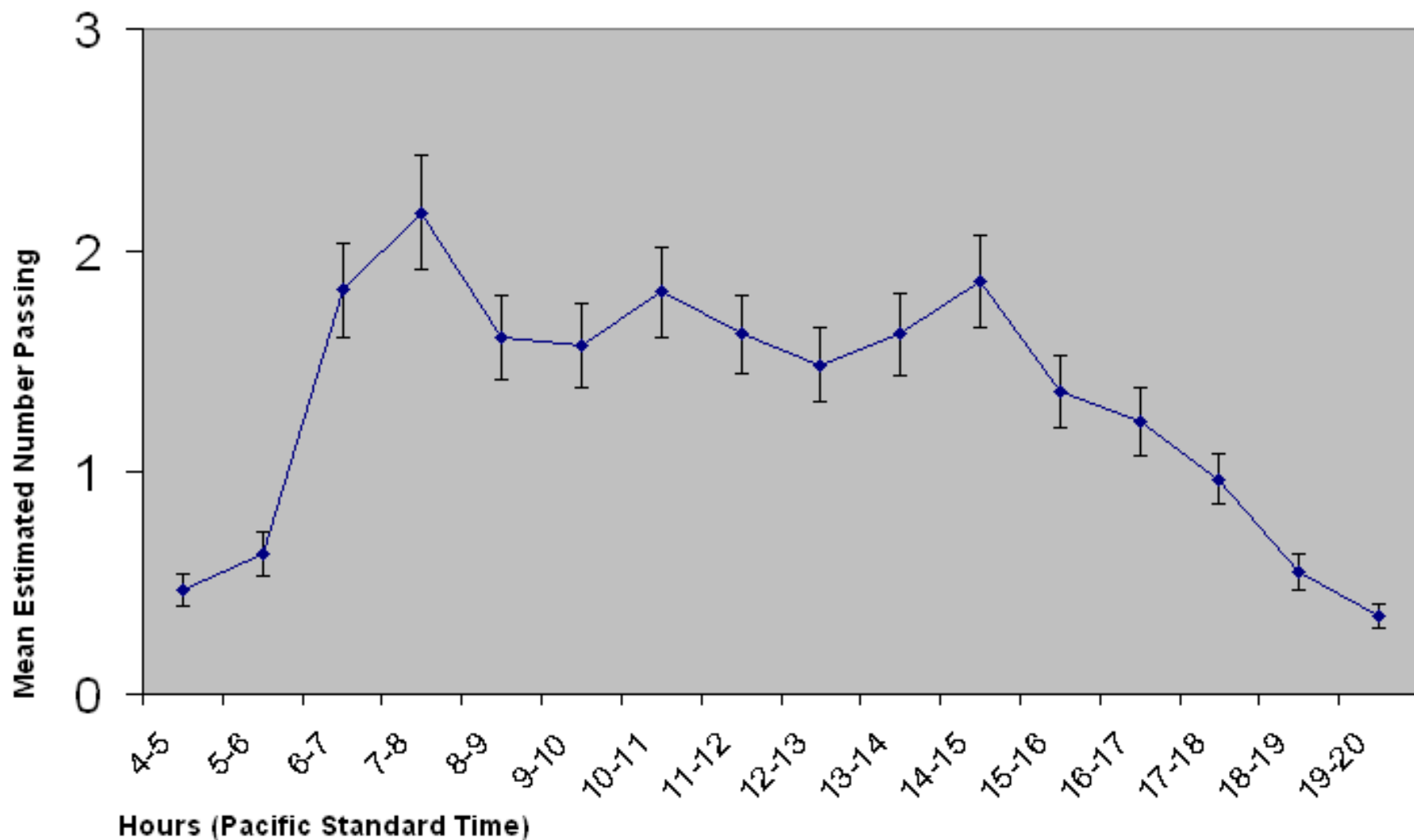
The Diel Distribution of the Coho Run (8/1-10/31)
through the Oregon Shore Fishladder at McNary Dam
2006 through 2008 Estimated Counts (45K Coho)



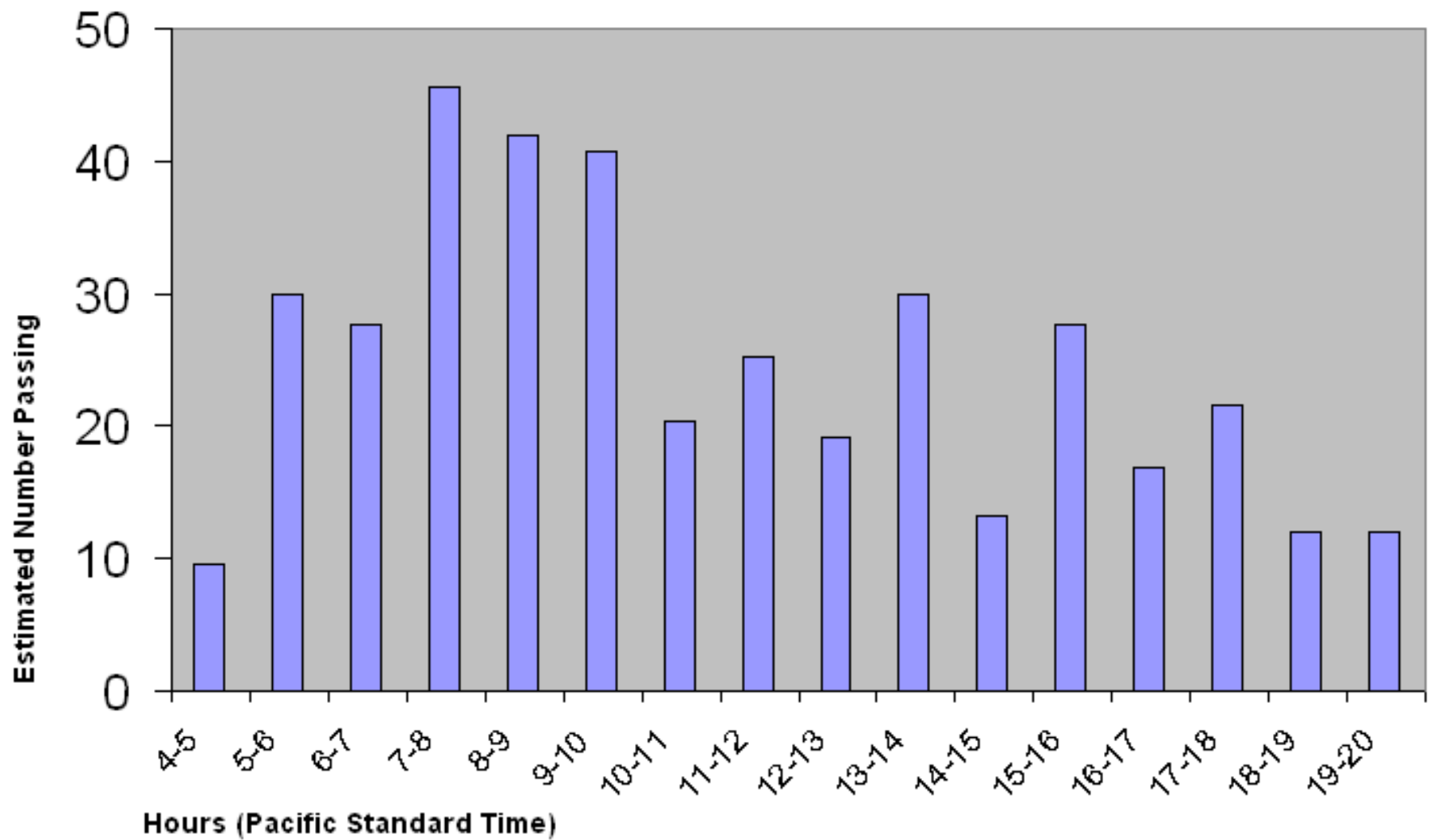
The Diel Distribution of the Coho Run (8/1-10/31)
through the Washington Shore Fishladder at McNary Dam
2006 through 2008 Estimated Counts (13K Coho)



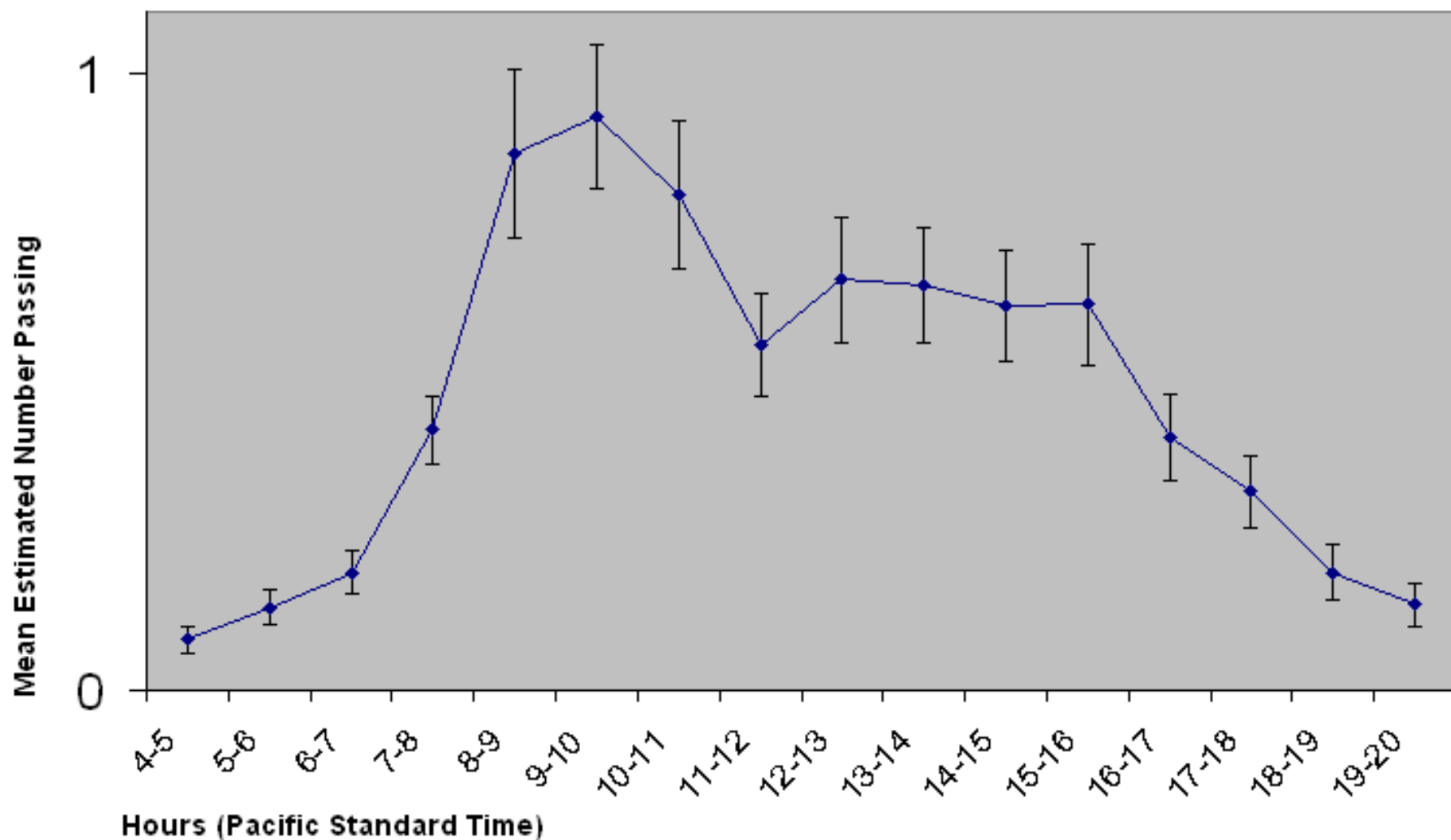
The Diel Distribution of the Coho Run (8/1-10/31)
through the South Fishladder at Ice Harbor Dam
2006 through 2008 Estimated Counts (6K Coho)



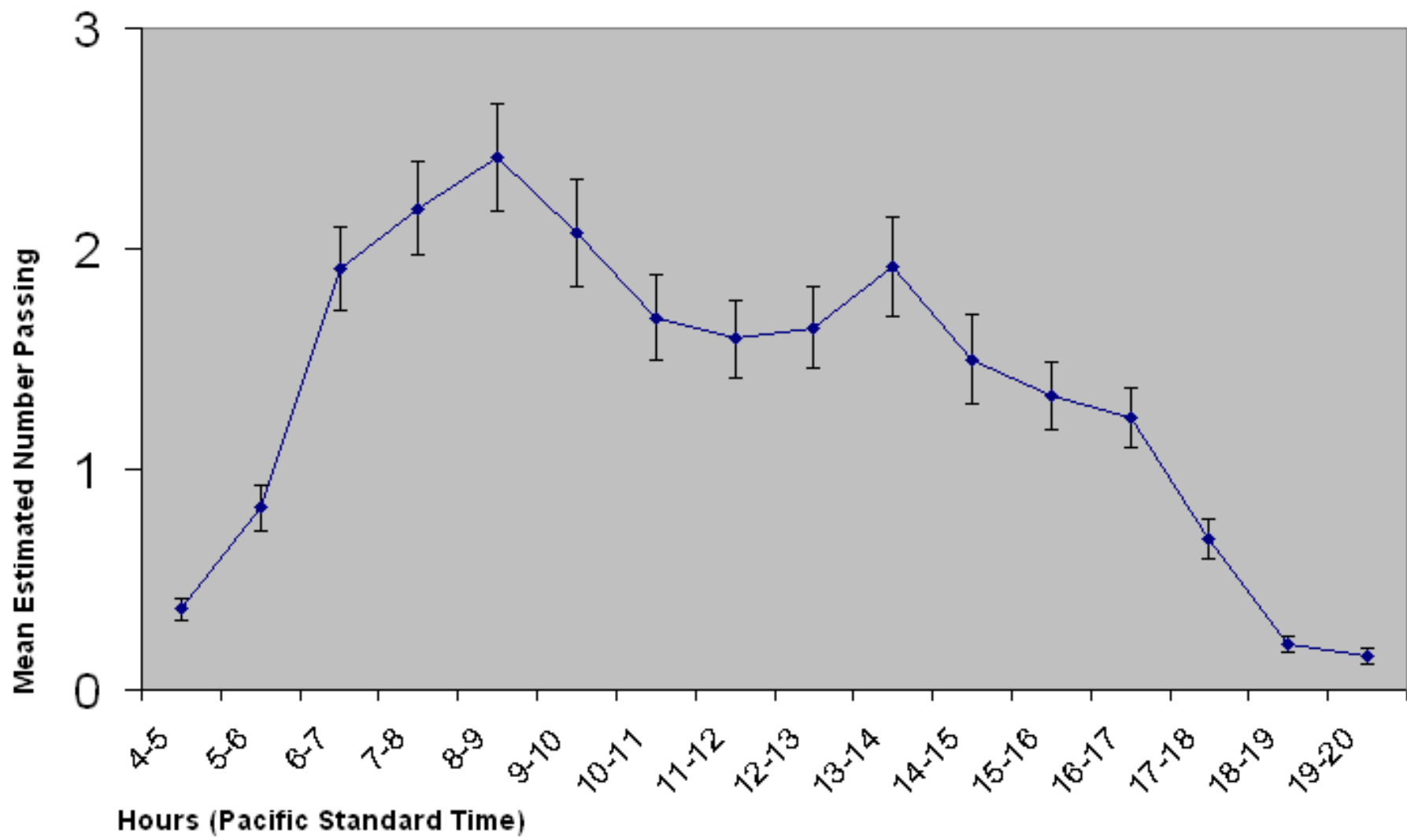
The Diel Distribution of the Coho Run (8/1-10/31)
through the North Fishladder at Ice Harbor Dam
2006 through 2008 Estimated Counts (394 Coho)



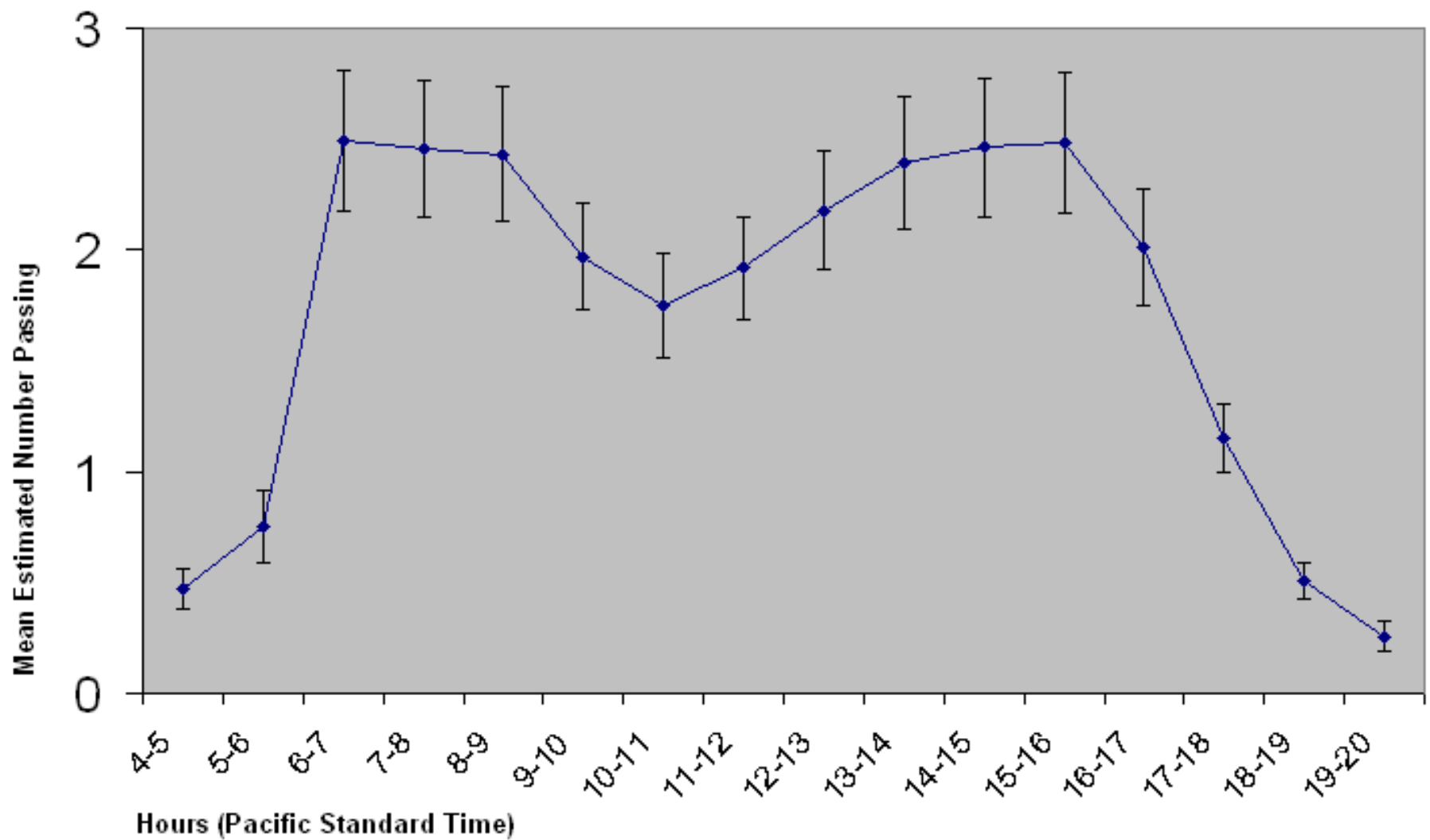
The Diel Distribution of the Coho Run (8/1-10/31)
through the South Fishladder at Lower Monumental Dam
2006 through 2008 Estimated Counts (2K Coho)



The Diel Distribution of the Coho Run (8/1-10/31)
through the North Fishladder at Lower Monumental Dam
2006 through 2008 Estimated Counts (6K Coho)



The Diel Distribution of the Coho Run (8/1-10/31)
through the Fishladder at Little Goose Dam
2006 through 2008 Estimated Counts (7K Coho)



The Diel Distribution of the Coho Run (8/1-10/31)
through the Fishladder at Lower Granite Dam
2006 through 2008 Estimated Counts (9K Coho)

