

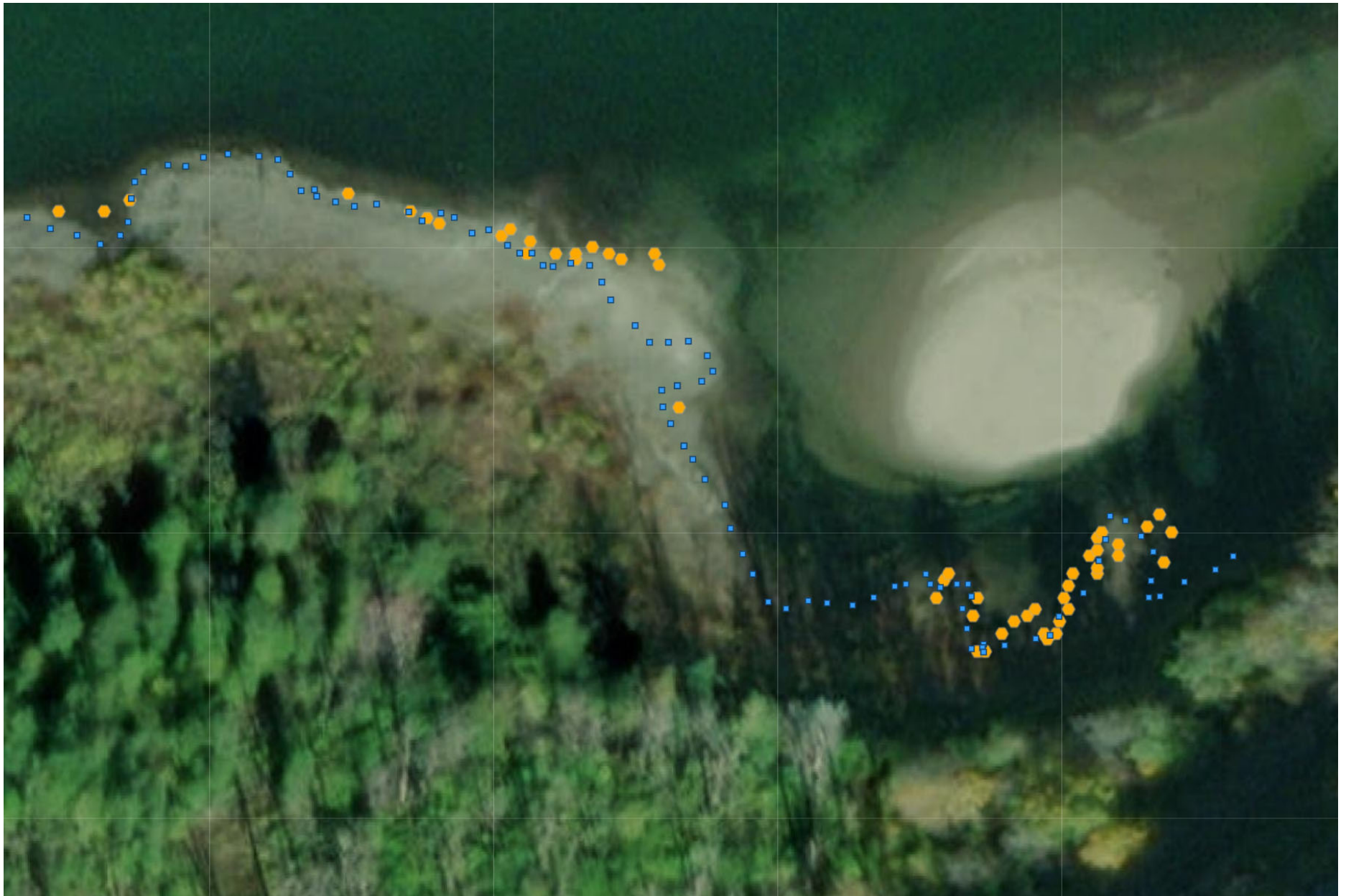
2022 Chum Redds and March 9, 2023 Water Surface

Blue Squares = March 9, 2023
Water Surface at BON TW = 10.5'



Orange Dots = Location of Redds
Marked on December 2, 2022

McCord Creek

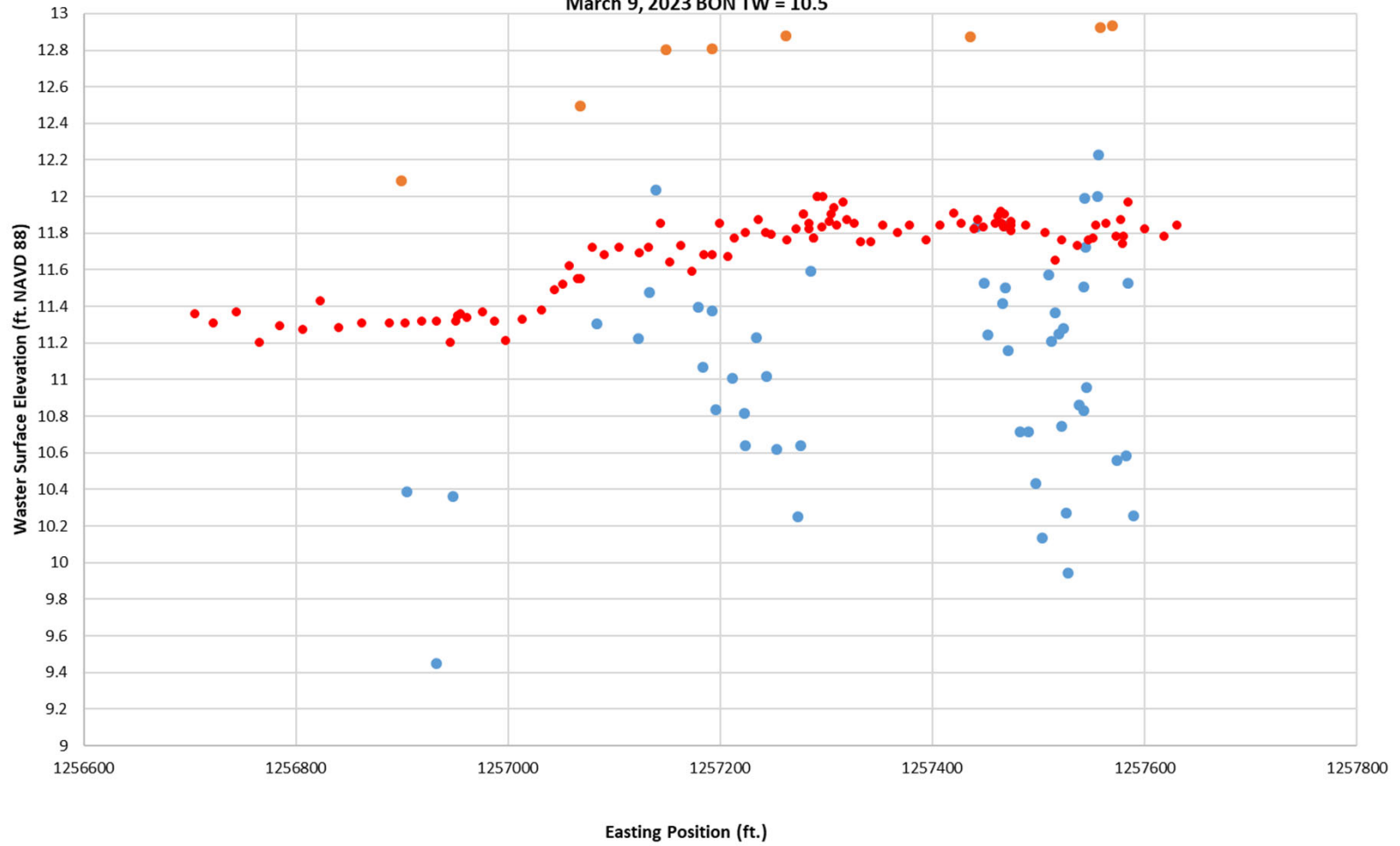


McCord Creek March 9, 2023



Redd above water surface

McCord Creek
December 2, 2022 BON TW = 12.0
March 9, 2023 BON TW = 10.5

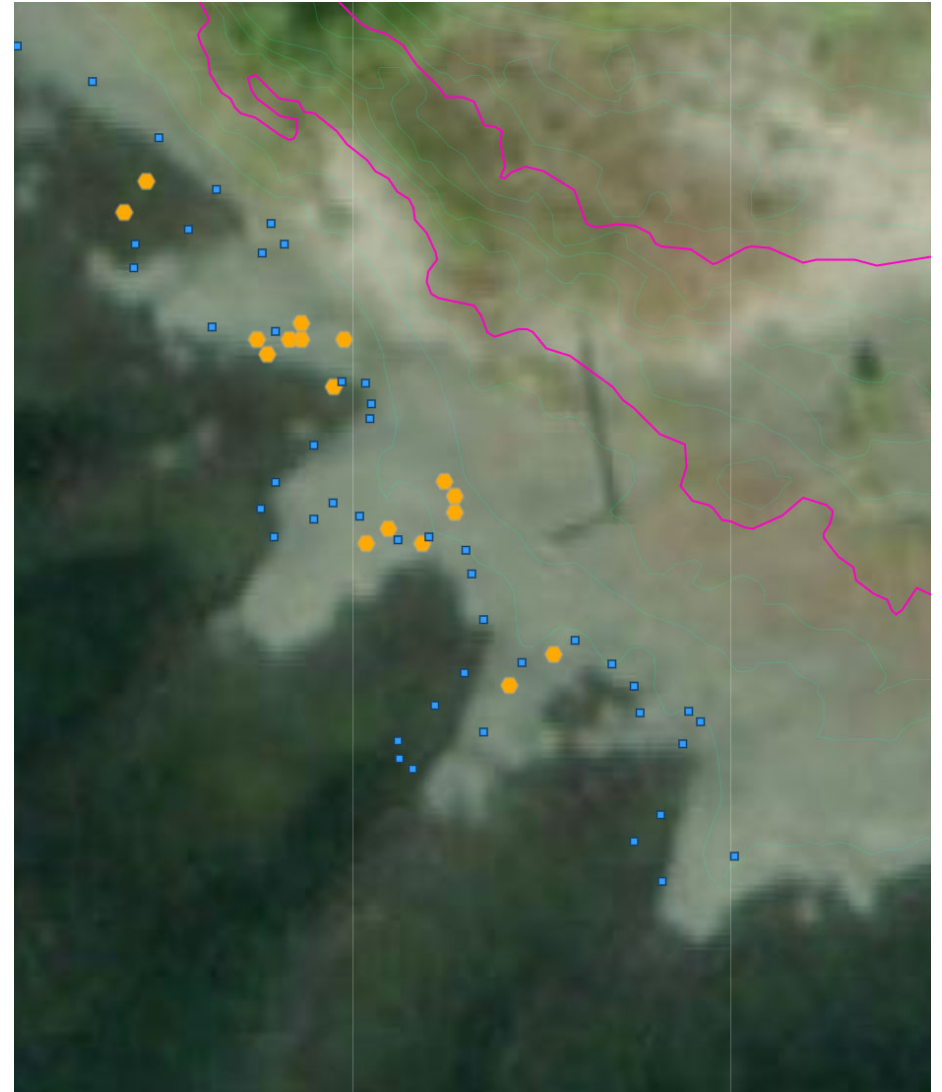


- "Redd Elevation (ft. NAVD88)
- December 2, 2022 Water Surface Elevation (ft. NAVD88)
- March 9, 2023 Water Surface Elevation (ft. NAVD88)

Breaks



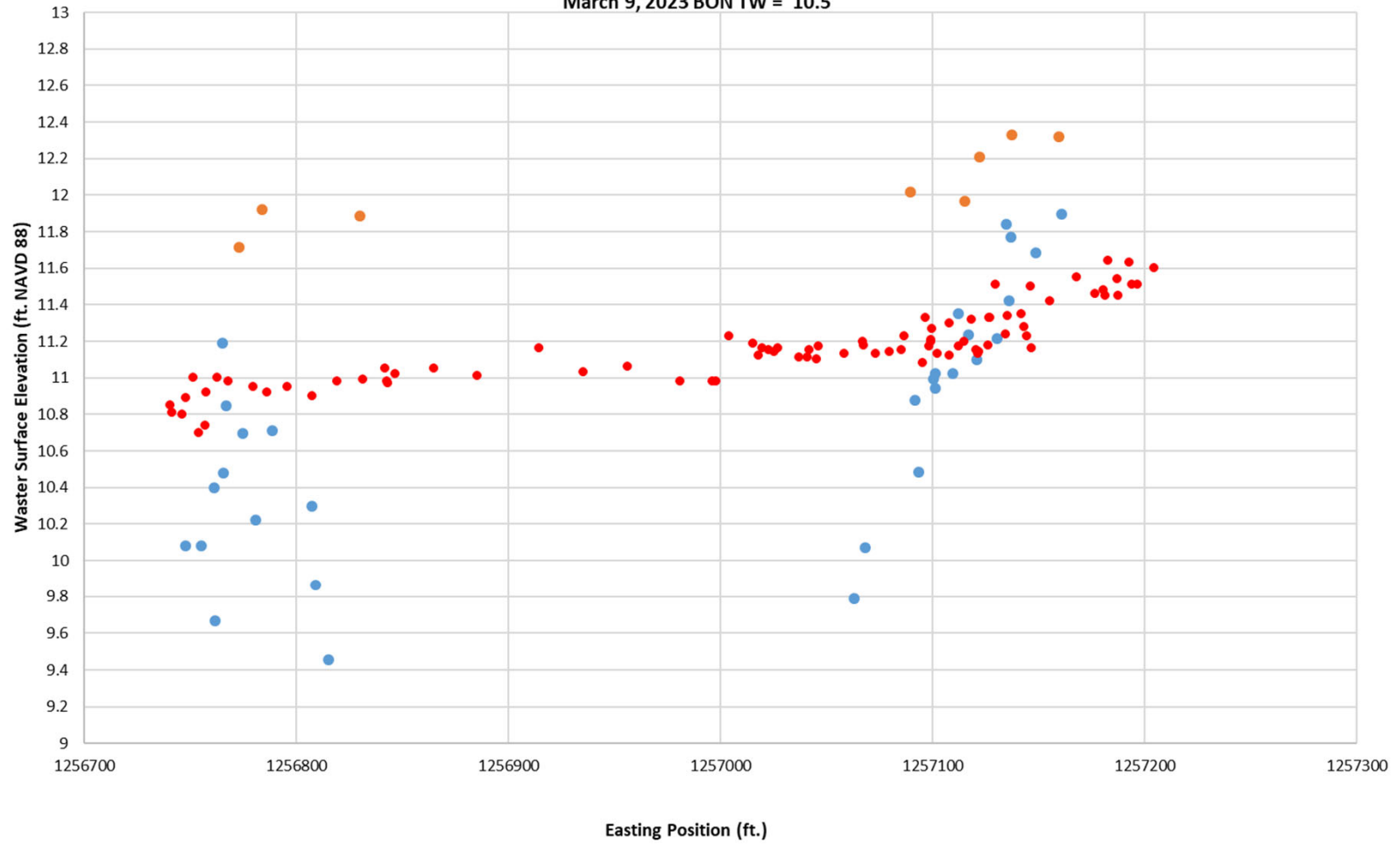
Breaks



Breaks

December 2, 2022 BON TW = 12.1

March 9, 2023 BON TW = 10.5

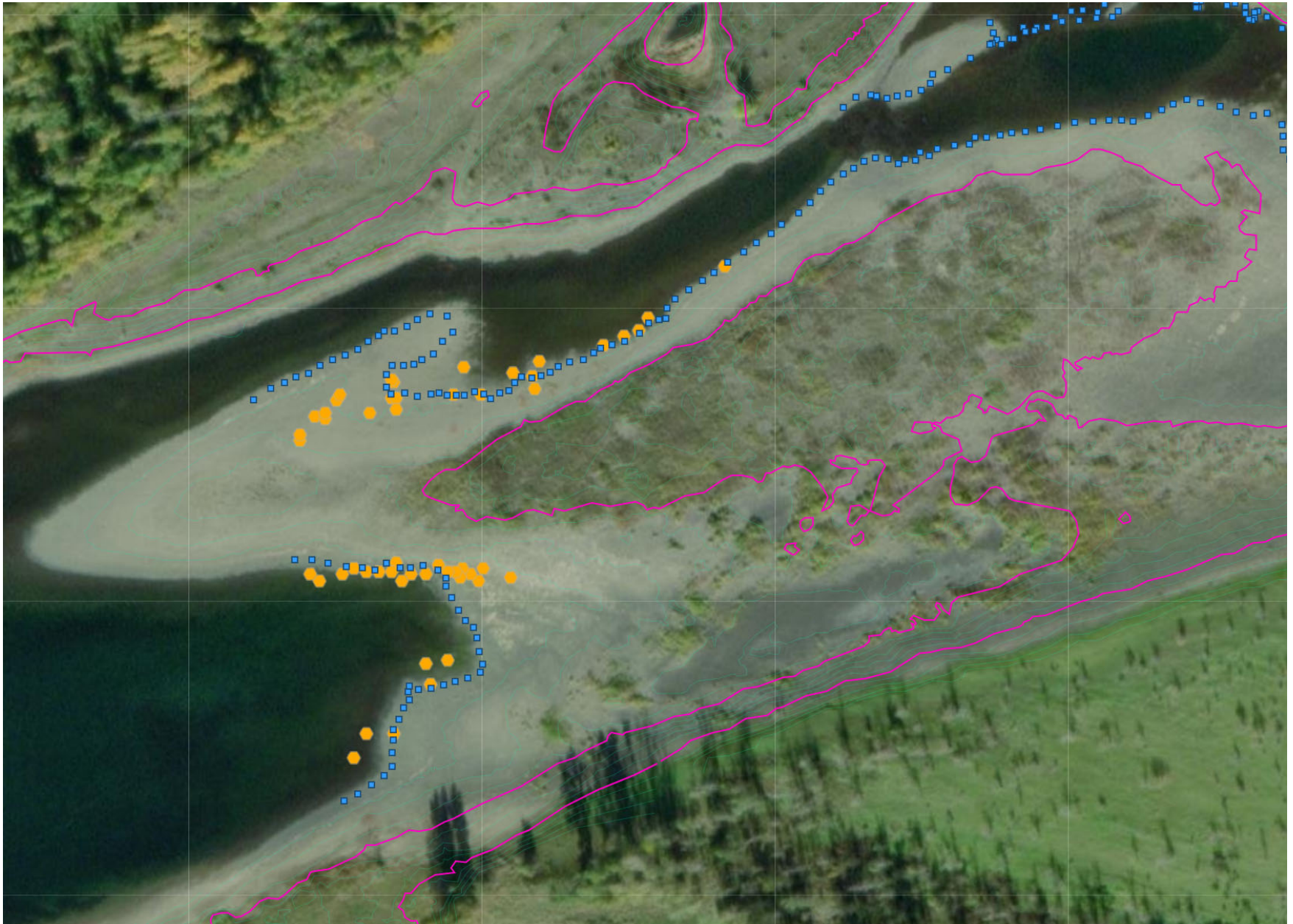


● "Redd Elevation (ft. NAVD88)

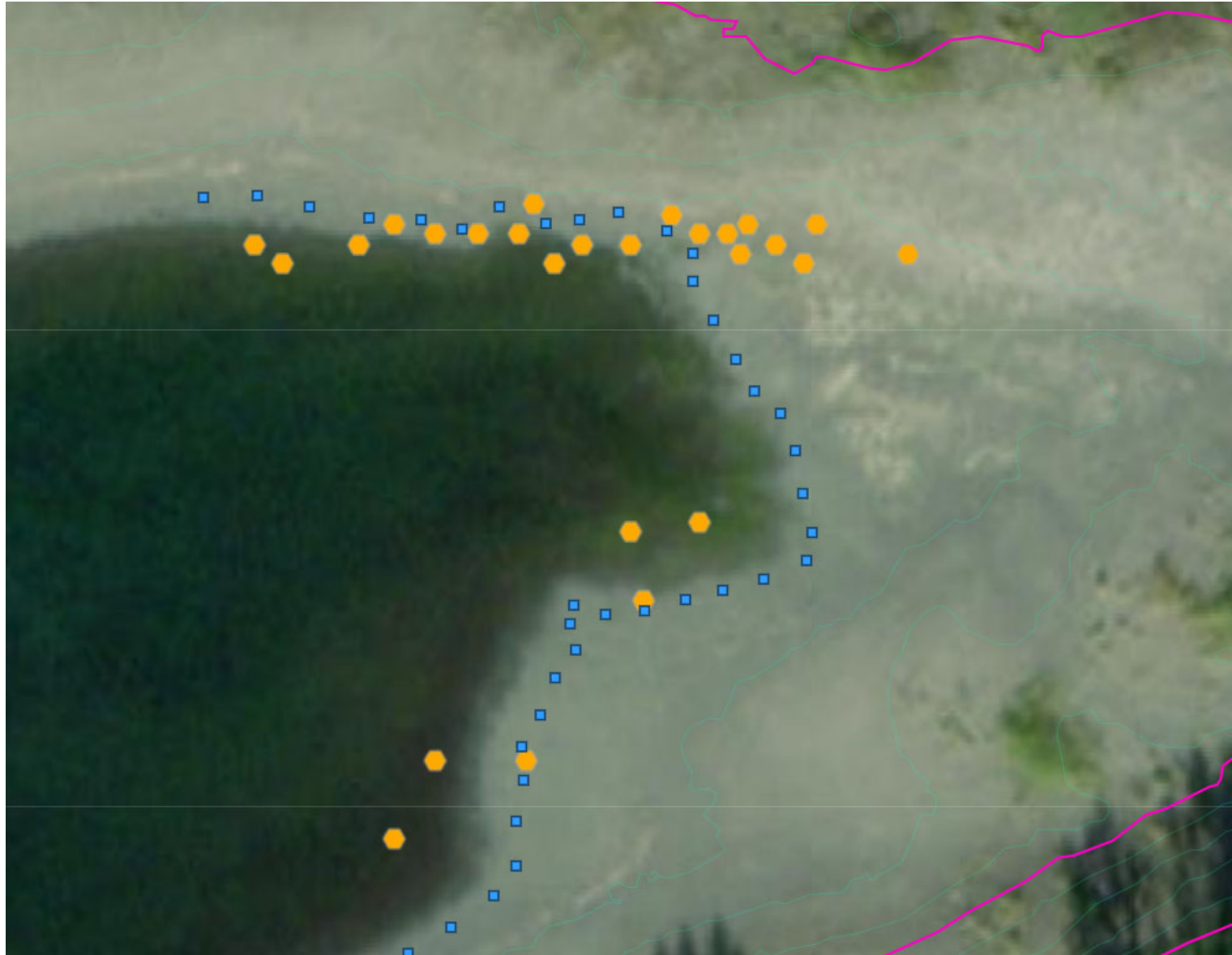
● December 2, 2022 Water Surface Elevation (ft. NAVD88)

● March 9, 2023 Water Surface Elevation (ft. NAVD88)

Ives Pocket and Channel

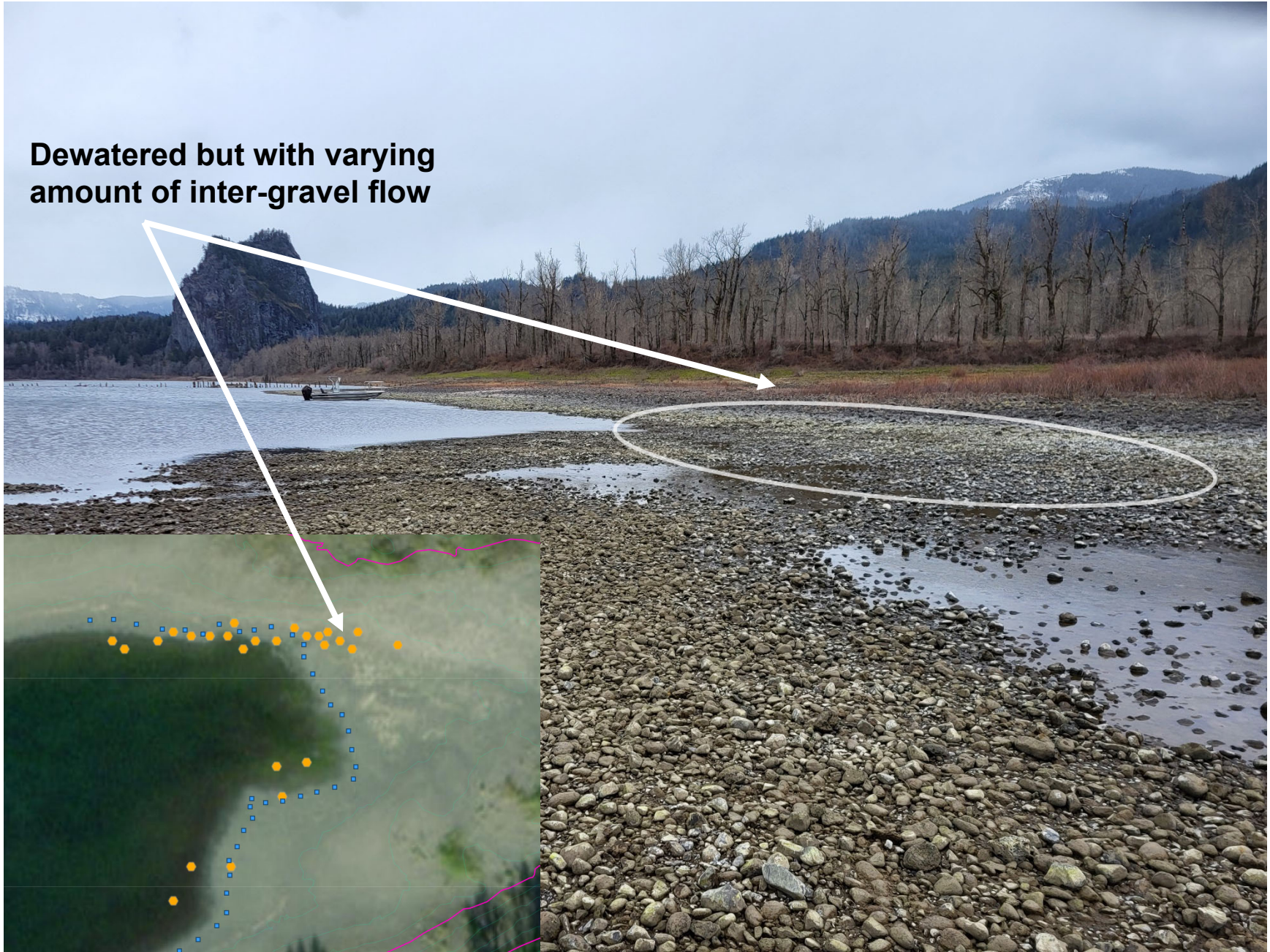


Ives Pocket



Ives Pocket March 9, 2023

Dewatered but with varying amount of inter-gravel flow



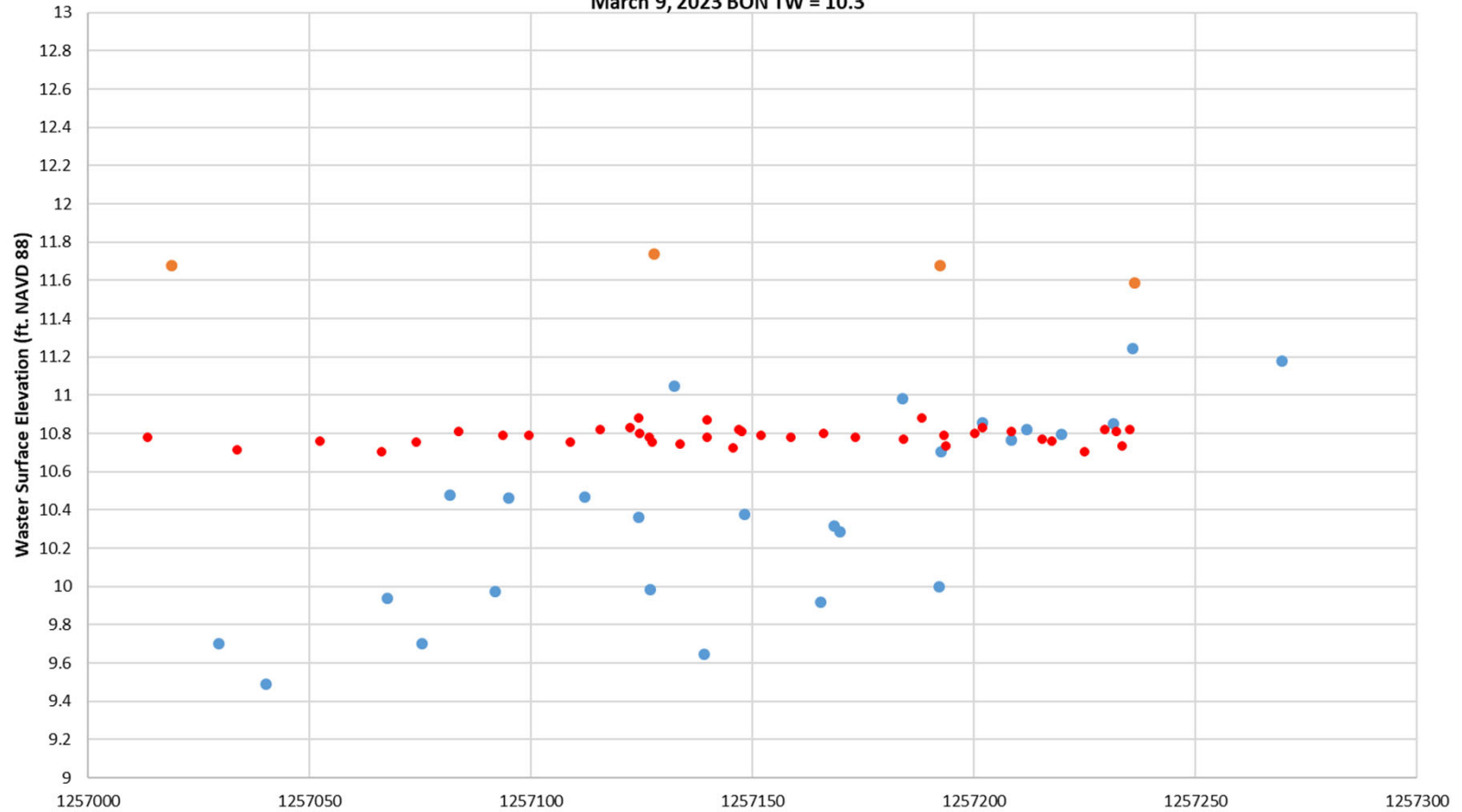
Ives Pocket March 9, 2023



Ives Pocket

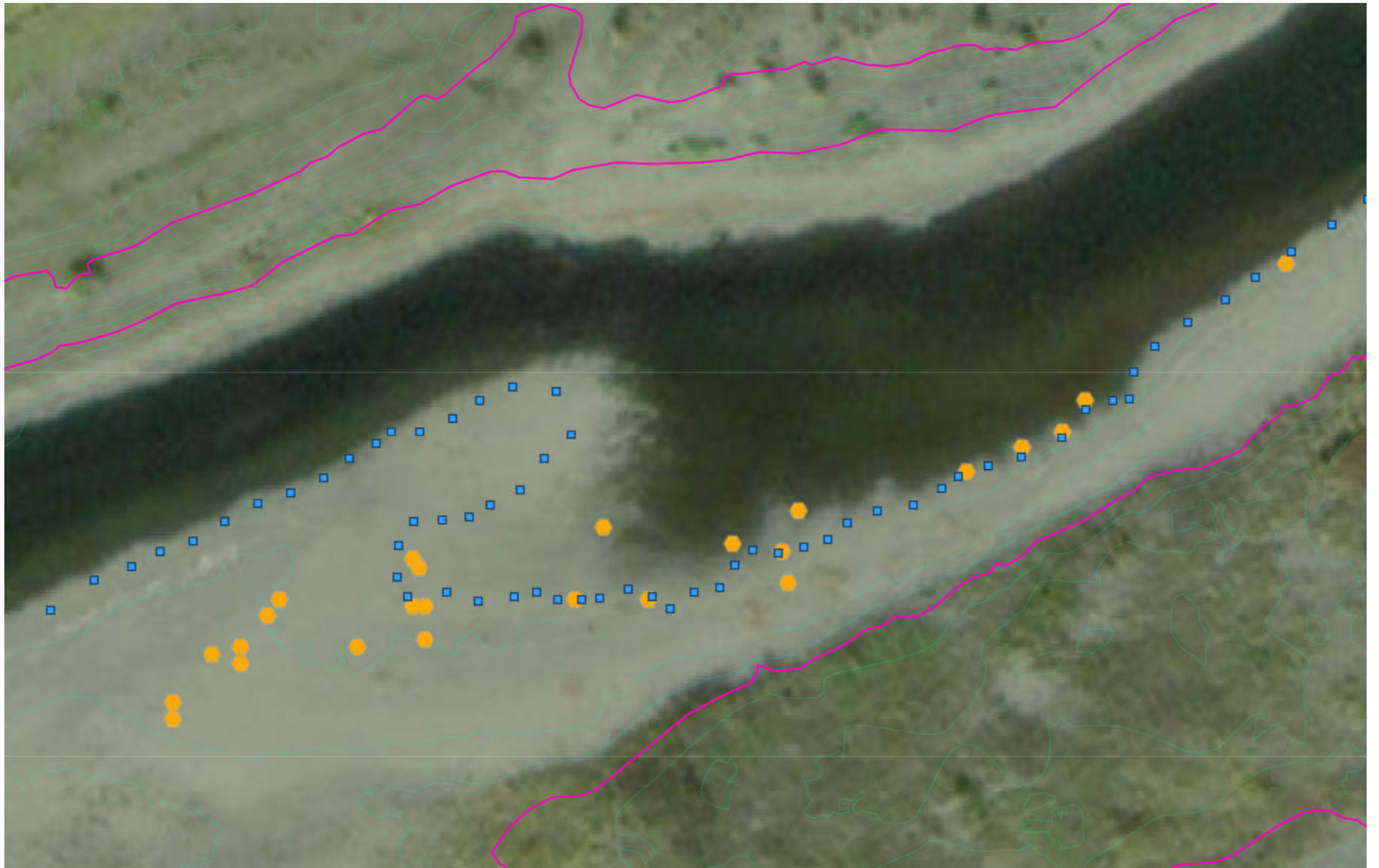
December 2, 2022 BON TW = 12.1

March 9, 2023 BON TW = 10.3

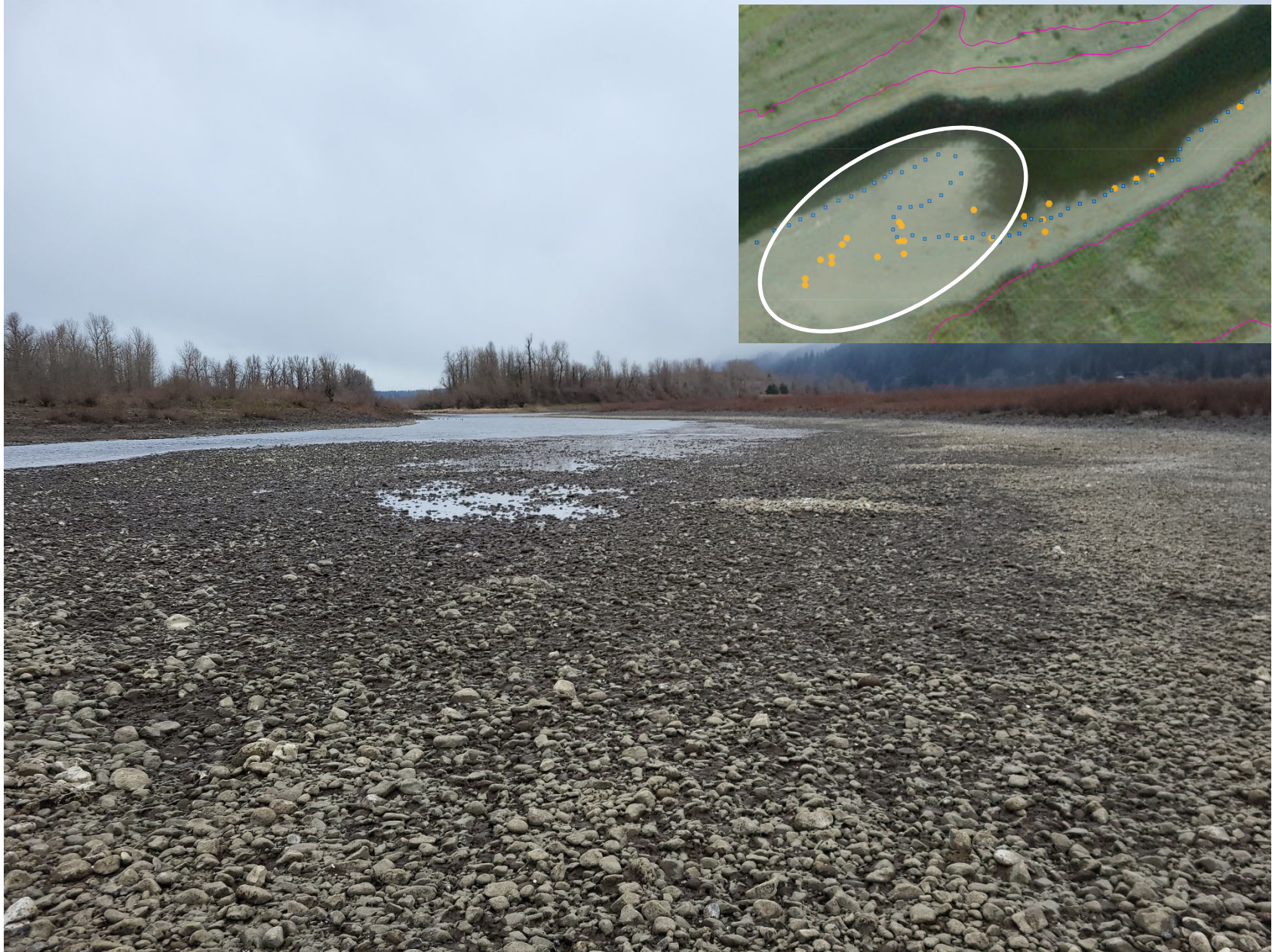


● December 2, 2022 Water Surface Elevation (ft. NAVD88) ● Redd Elevation (ft. NAVD88) ● March 9, 2023 Water Surface Elevation (ft. NAVD88)

Ives Channel



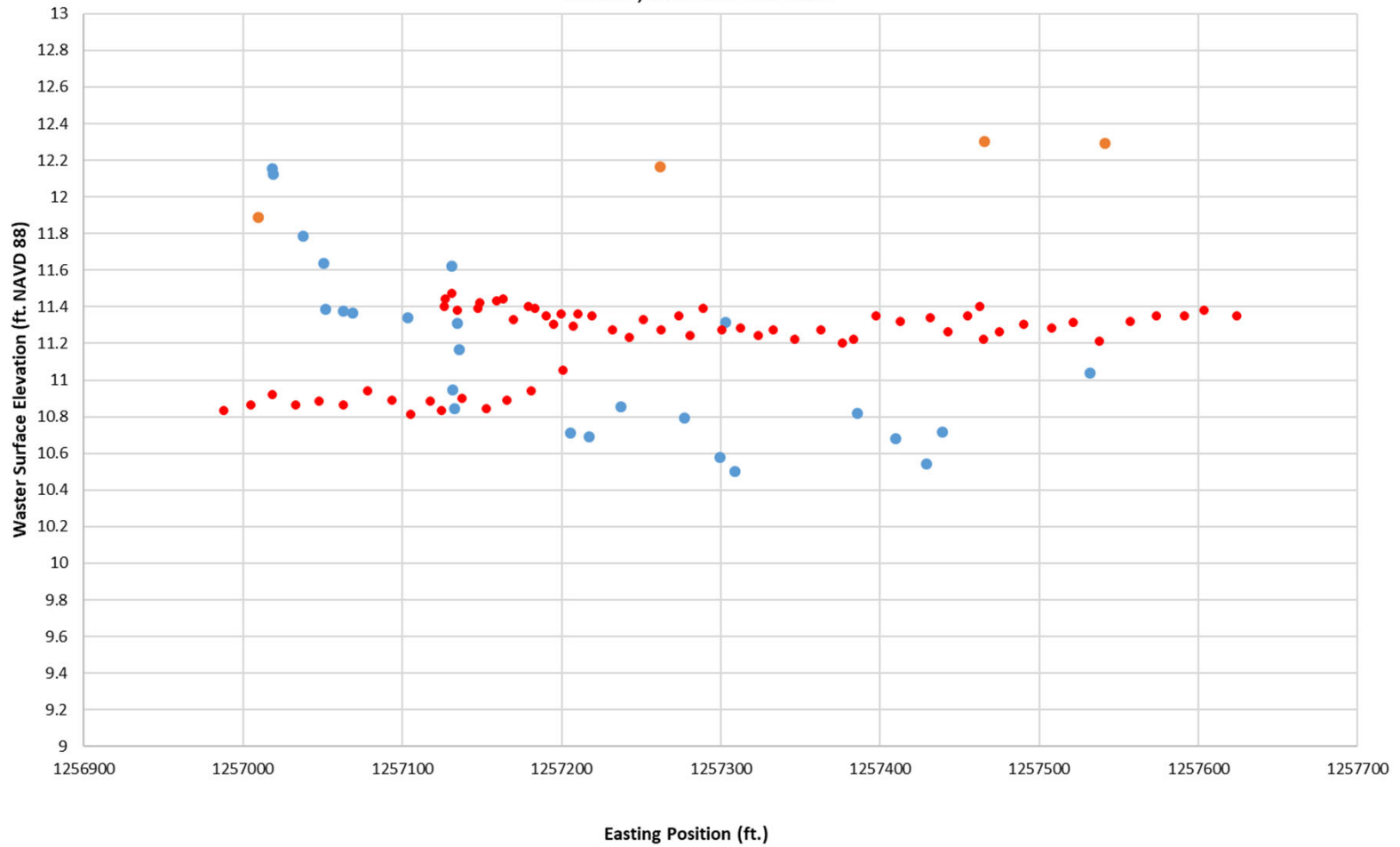
Ives Channel March 9, 2023



Ives Channel

December 2, 2022 BON TW = 12.2

March 9, 2023 BON TW = 10.4



● "Redd Elevation (ft. NAVD88)

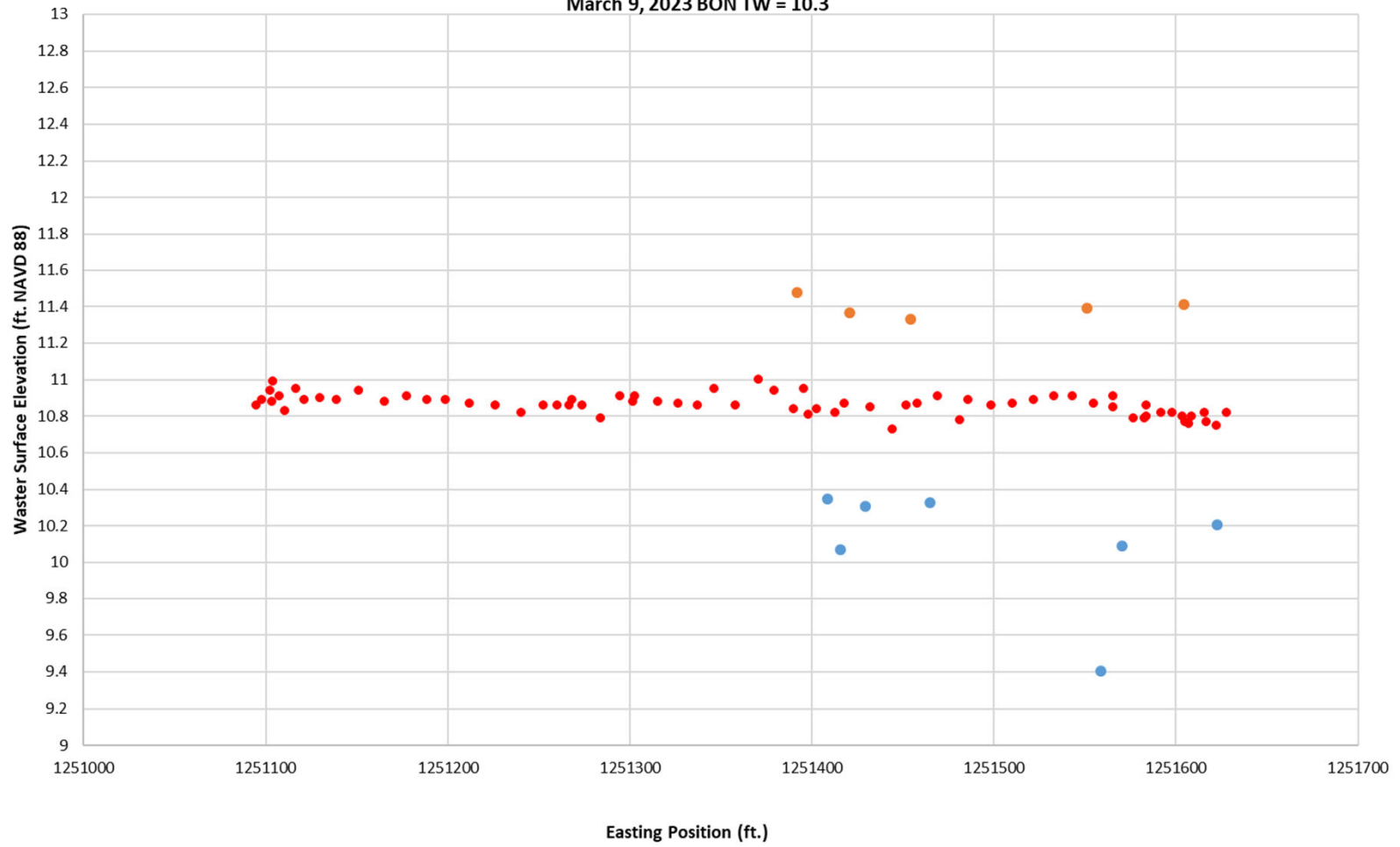
● December 2, 2022 Water Surface Elevation (ft. NAVD88)

● March 9, 2023 Water Surface Elevation (ft. NAVD88)

Woodard Creek



Woodard
December 2, 2022 BON TW = 12.3
March 9, 2023 BON TW = 10.3



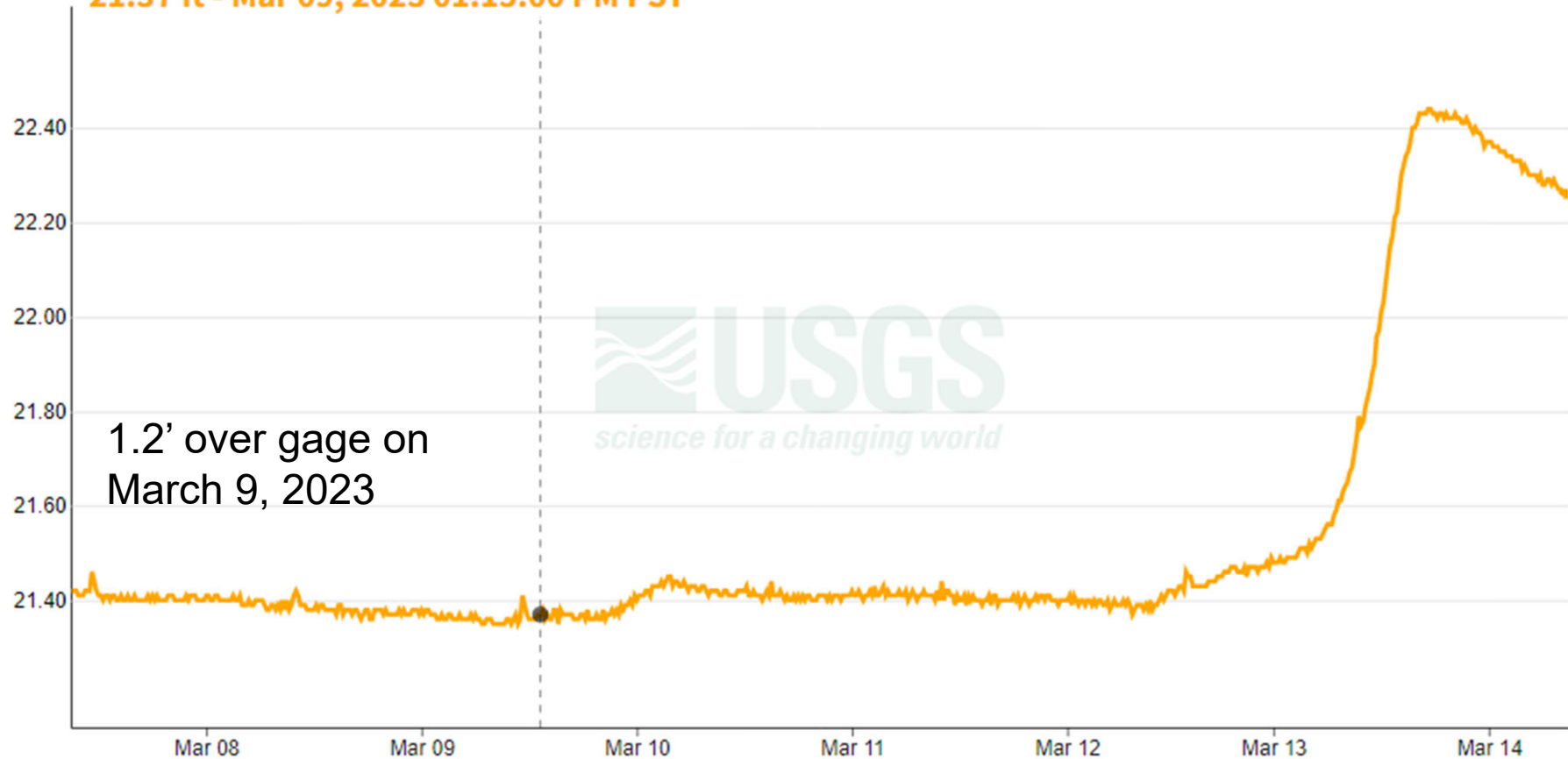
● "Redd Elevation (ft. NAVD88) ● December 2, 2022 Water Surface Elevation (ft. NAVD88) ● March 9, 2023 Water Surface Elevation (ft. NAVD88)

Hamilton Creek Near Mouth, at N Bonneville, WA

March 7, 2023 - March 14, 2023

Gage height, ft ⓘ

21.37 ft - Mar 09, 2023 01:15:00 PM PST



1.2' over gage on
March 9, 2023

Mouth of Hamilton Creek Looking Upstream - March 9, 2023



Flow Out of Hamilton Creek Looking Downstream - March 9, 2023



Break Upstream of Hamilton Creek Looking Upstream – March 9, 2023

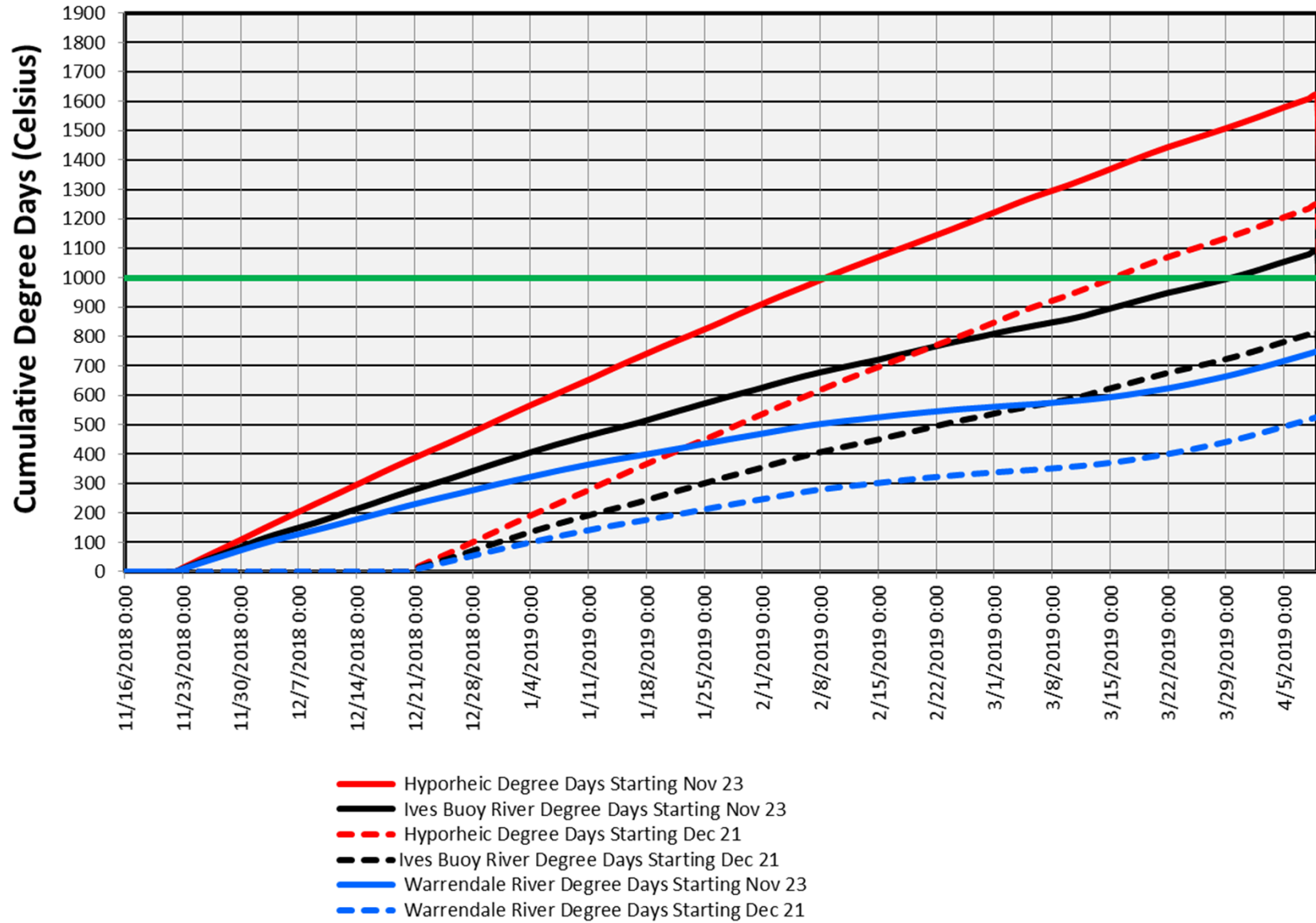
1"-6" of water flowing
across the break



Break Upstream of Hamilton Creek Looking Upstream – March 9, 2023



2018-19 Ives Buoy Cumulative Day Average Degree Days



From Notes on Chum emergence timing as shared by Todd Hillson and Brad Garner

