

### 3.4.1.1 Passage Timing

Estimates of adult steelhead passing McNary Dam were made for each hour of the day at each sampling location. Summarizing passage estimates across many days gives a picture of the diel trends in passage for each route type. Figure 3.11 illustrates the diel trends for each study period. Few fish were detected passing through the unguided route (turbines) in either season, making passage timing uncertain. Passage through guided routes (bypass) was more evident throughout the 24-hour cycle, but was sparse in the spring 2021 period. Passage through the TSW was grouped in those few hours of the morning when TSW discharge happened.

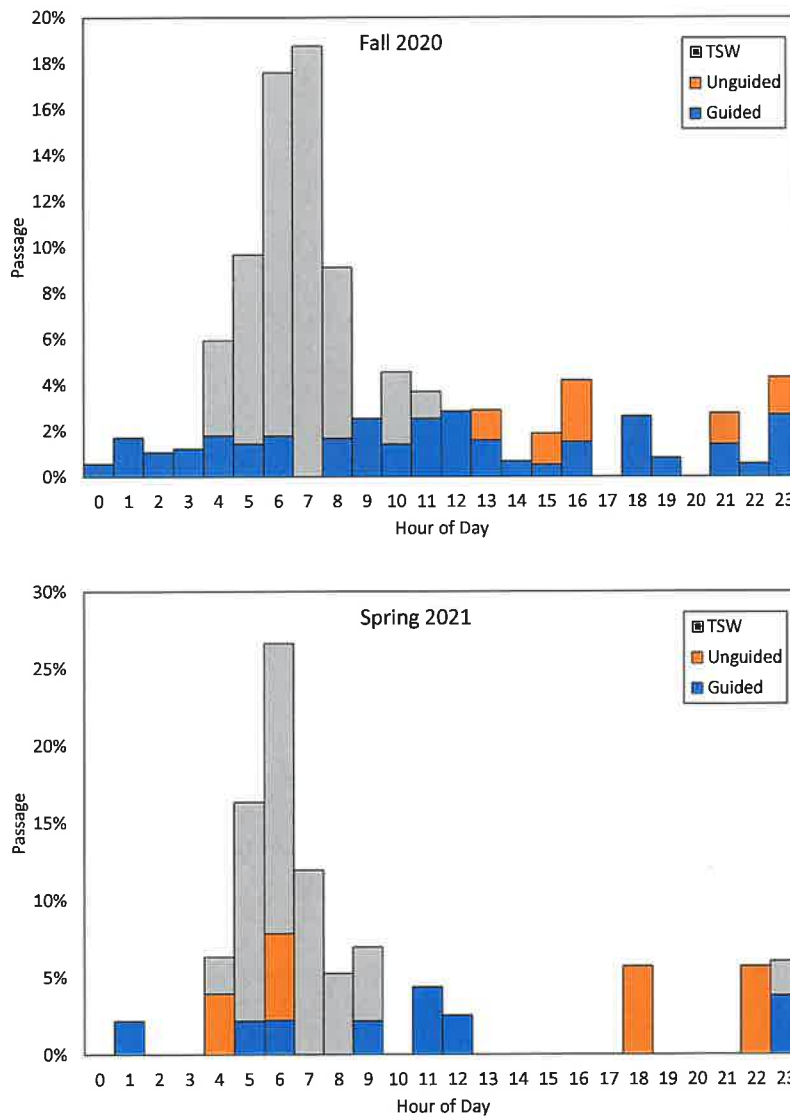


Figure 3.11. Diel Passage of Adult Steelhead by Route Type During the Study Period in Fall 2020 (Top) and Spring 2021 (Bottom). Note: TSW operation was limited to three 4-hour periods per week.