

# Passage Indicator

## What is Passage Indicator?

Passage indicator app predicts adult spring/summer Chinook passage rates based on regression models using PIT-tag and adult count data. It compares current observations of adult passage to the model predictions in real time, and provides an objective assessment of passage progress. Data from previous years are included for demonstration purpose.

Select a year to display:

Number of simulations:

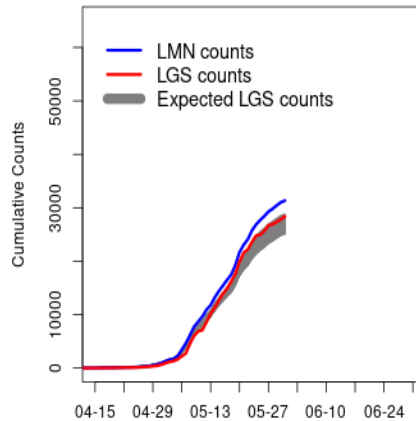


Date Range:

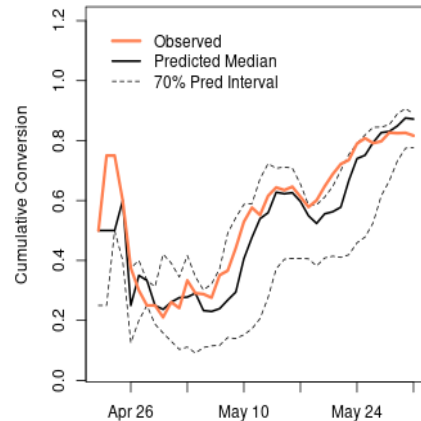
04/01 04/22 05/31 06/30  
 04/01 04/19 05/07 05/25 06/12 06/30

Data last updated on 2021-06-01 15:00:20

LMN & LGS Counts, 2021

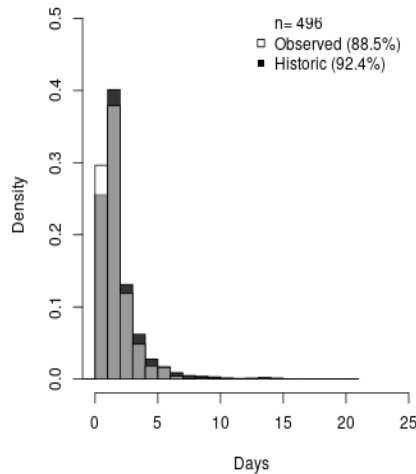


IHR to LGR, 2021

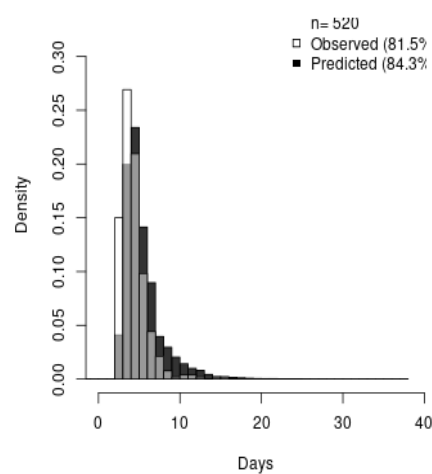


Historical Data for IHR-LGR

LMN-LGS Travel Time (% Passed), 2021



IHR-LGR Travel Time (% Passed), 2021



### How do I assess passage?

- If the observed LGS counts (upper left panel) ventured below the predicted area, results would suggest a slower than expected passage progress based on adult counts.
- If the observed conversions (upper right panel) fell below the predicted area, it would suggest a slower than expected passage progress.
- During a slow down in passage progress, users may notice the current status of passage (% passed in the bottom panels) at LGS or LGR being lower compared to the historical and/or predicted status of the same time period.
- Once the fish with longer travel time started to pass LGS (and eventually LGR), users may see the observed distributions with taller bars in the sections of long travel time, compared to the historical and/or predicted distributions.