

DWORSHAK OPERATIONS FOR SPRING RUNOFF

Willow Walker, E.I.T.
Reservoir Regulator and
Database Manager

Date: Mar. 3rd, 2021



Ridgeline of the Clearwater Basin, 2020



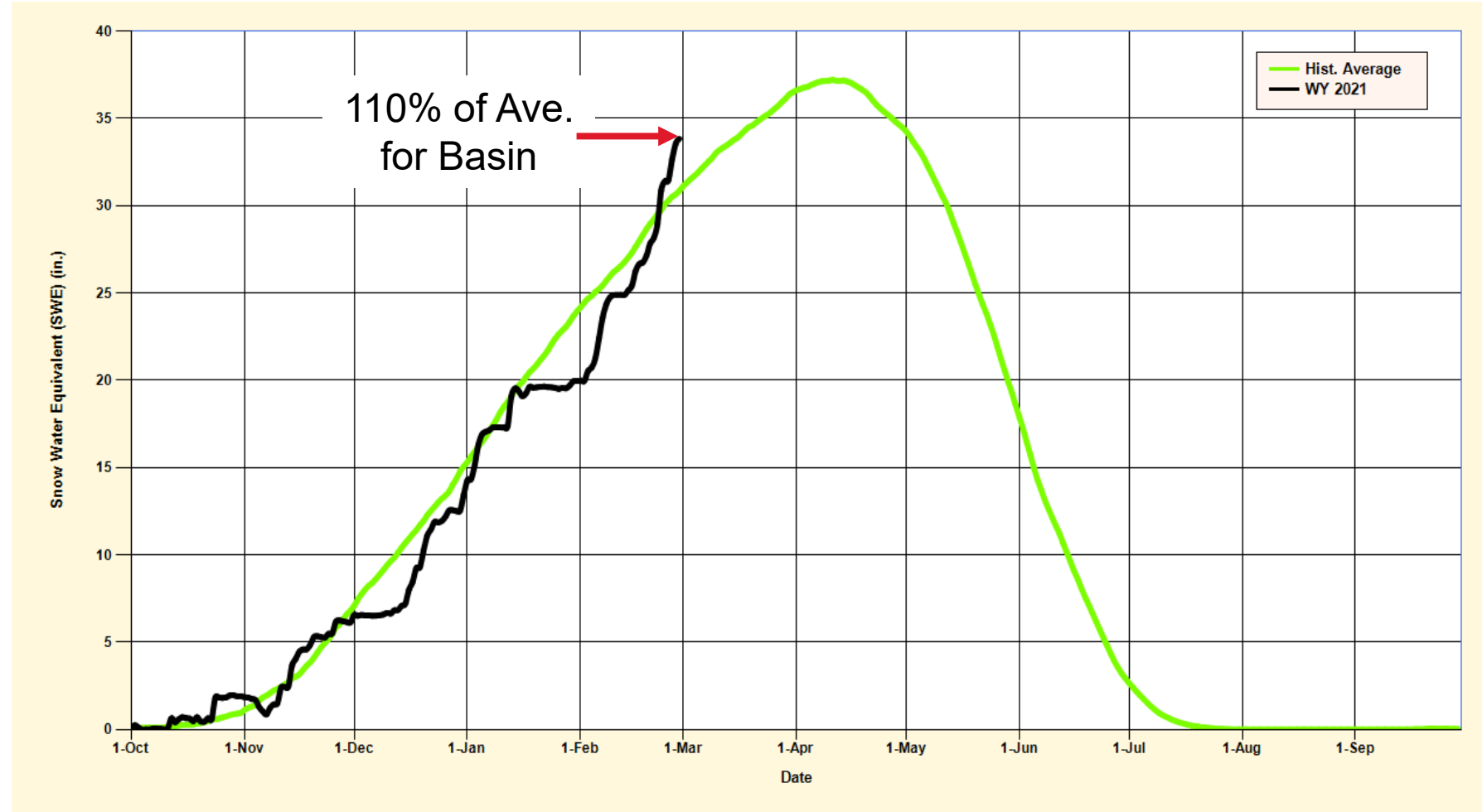
US Army Corps
of Engineers®



BASIN SNOW CONDITIONS



- Current conditions
 - Low Elevation= ~ 25” SWE (**well above normal**)
 - Mid Elevation= ~35” SWE (**above normal**)
 - Upper Elevation = ~40” SWE (**normal**)
- Impacts
 - Low elevation snow will **runoff early**: late March / early April





WATER SUPPLY FORECAST (WSF) AND FLOOD RISK MANAGEMENT (FRM) TARGETS



- Significant increase in WSF over last 10 days of Feb
 - largely due to above average low elevation snow

	WSF
March 1 st	2,855 KAF
April 1 st	2,855 KAF

	System FRM Target	Local FRM Target
March 31 st	1,494.6 ft	1516.0 ft
April 30 th	1,473.4 ft	1523.5 ft

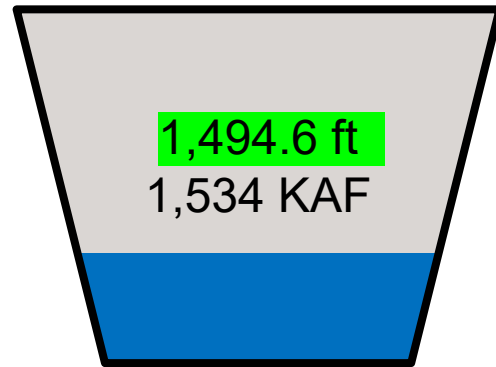


SHIFTING SYSTEM SPACE

March 31st FRM Targets

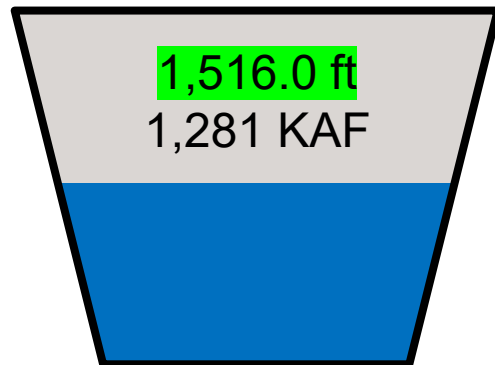
DWORSHAK

NO SHIFT



$1,534 \text{ KAF} - 1,281 \text{ KAF} = 253 \text{ KAF}$
of space reservation can be shifted to Grand Coulee

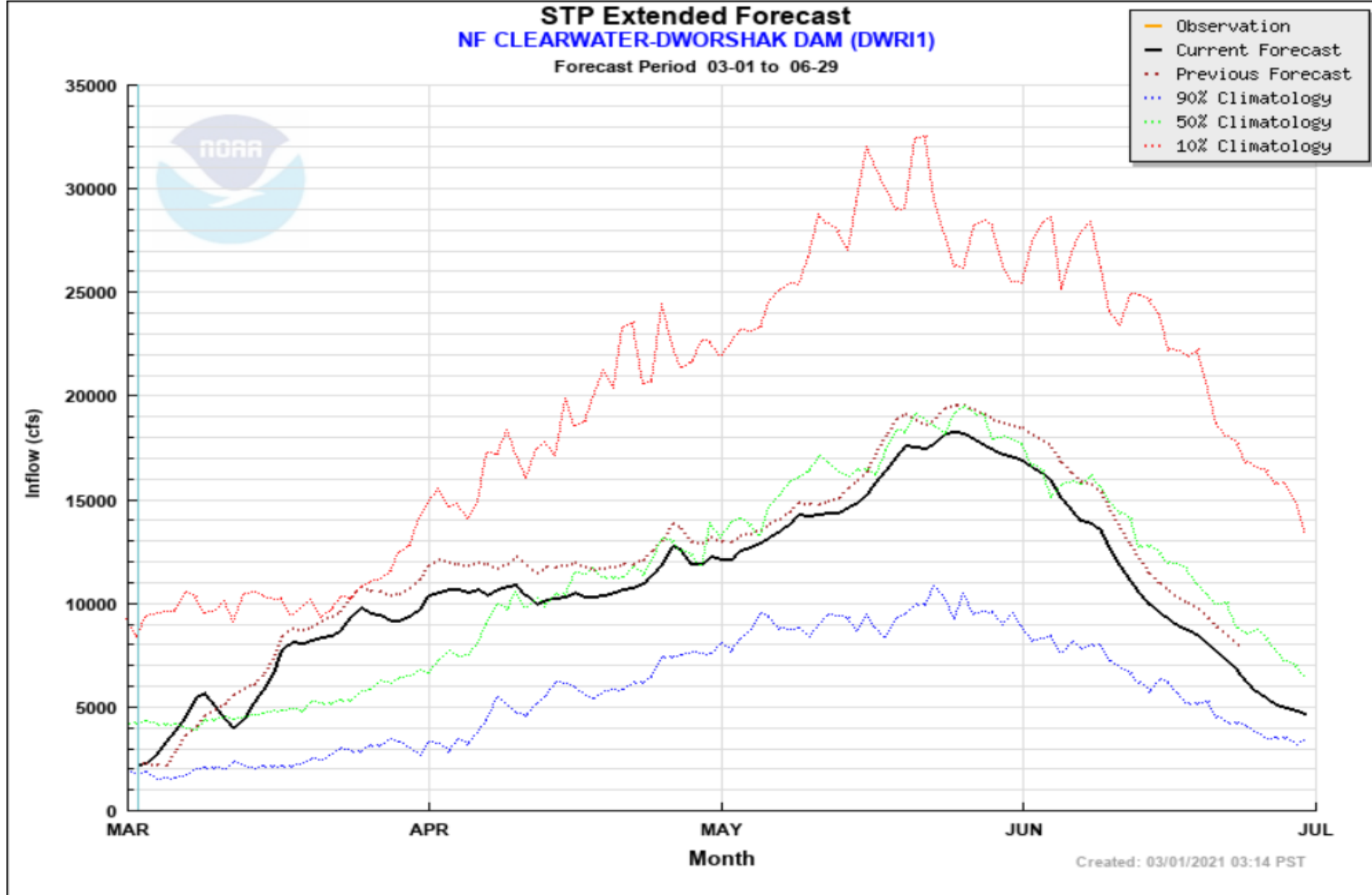
SHIFT



- Dworshak is **always** required to hold space to meet local flood control targets
- The difference between system flood control space and local flood control space **may** be shifted to Grand Coulee
 - NWW has submitted the request to shift
- Dworshak is required to meet its **April 30th** target elevation, which is influenced by system FRM and FCRC



CURRENT FORECAST



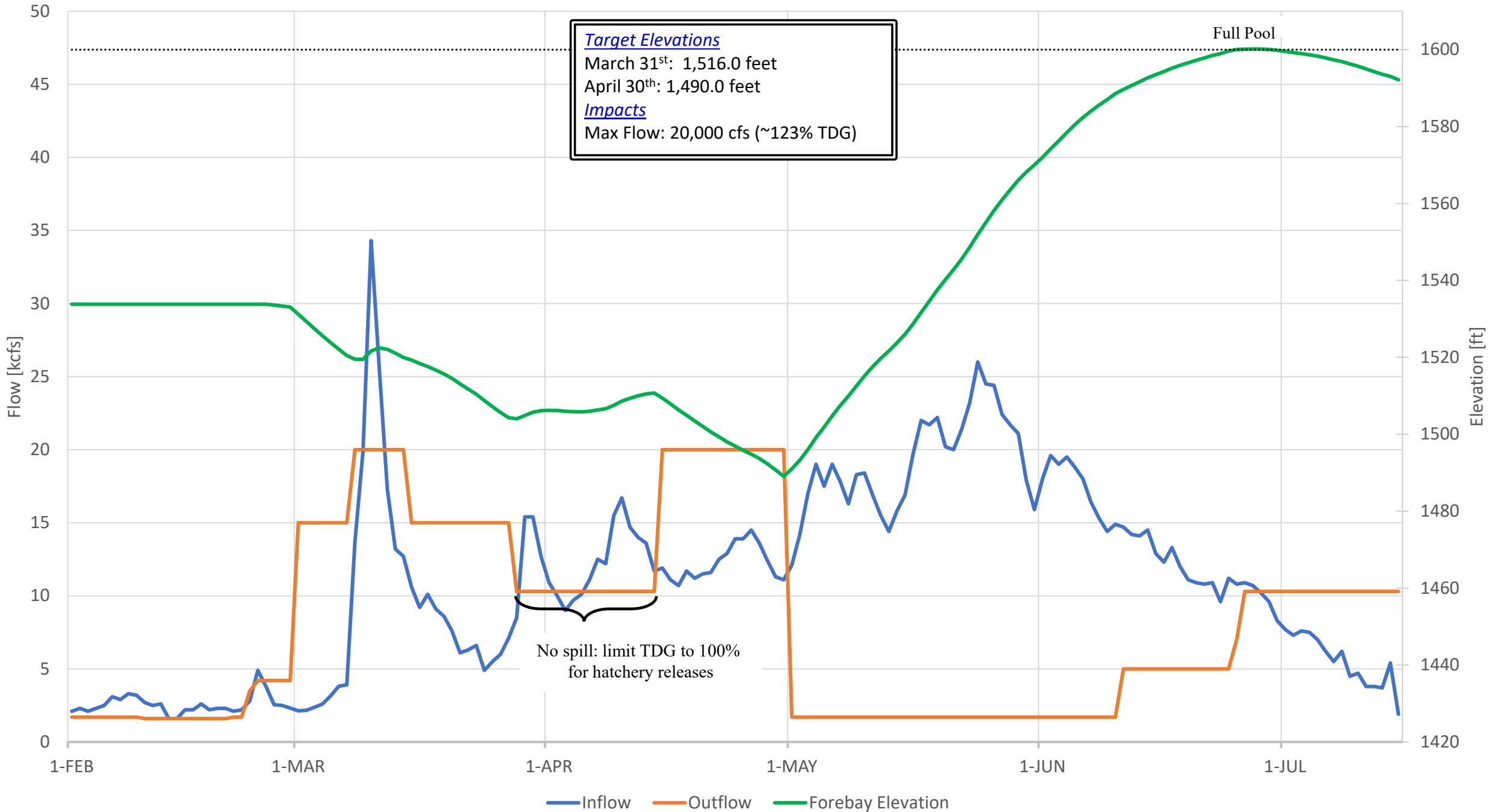


OPERATIONS

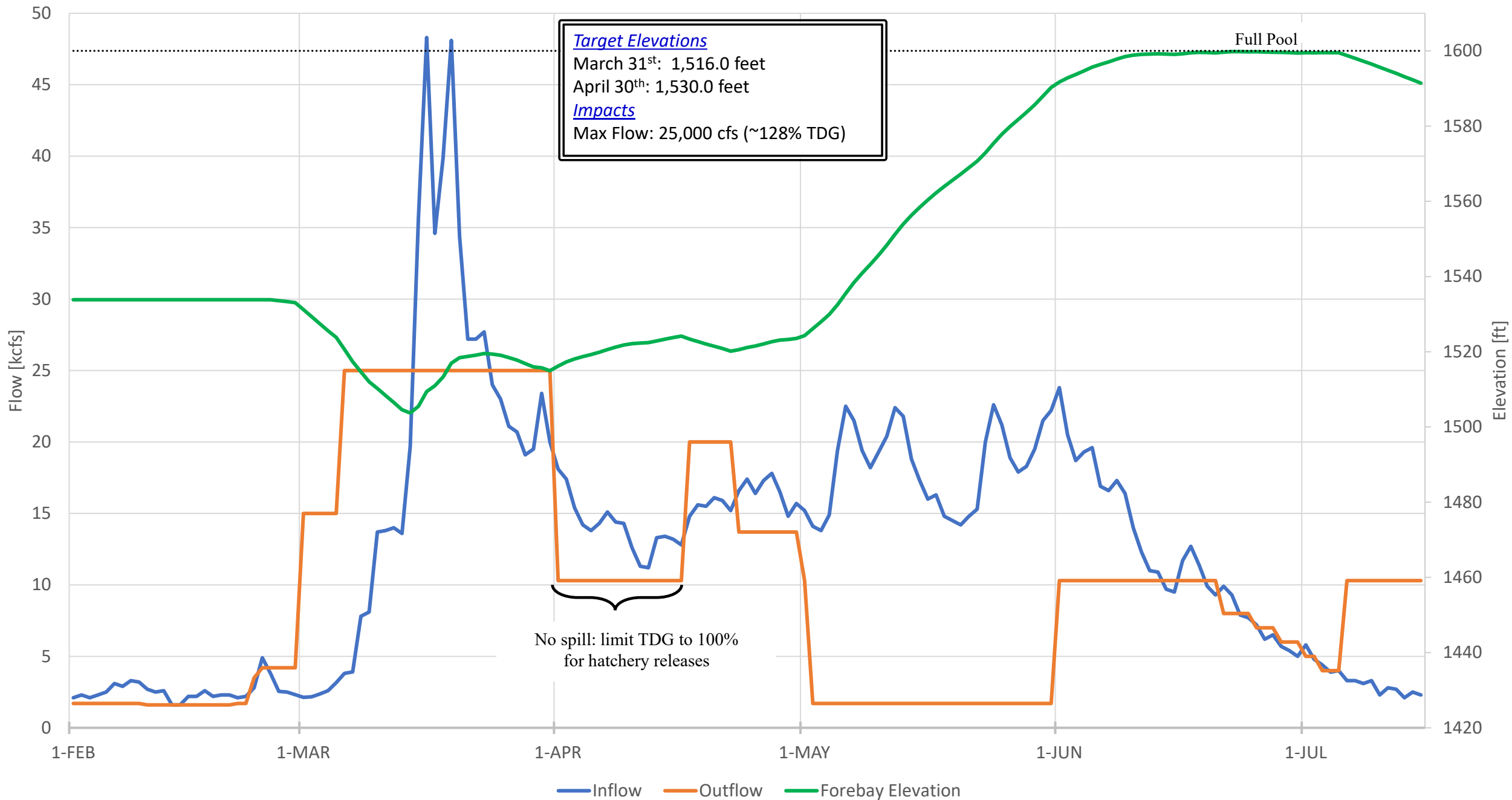


- Constantly evaluating operational plan based on the following scenarios
 - Early runoff due to low elevation snowpack – late March and early April
 - Similar to water years 2014 and 2017
 - STP
 - Falling forecast
 - Similar to water year 2000

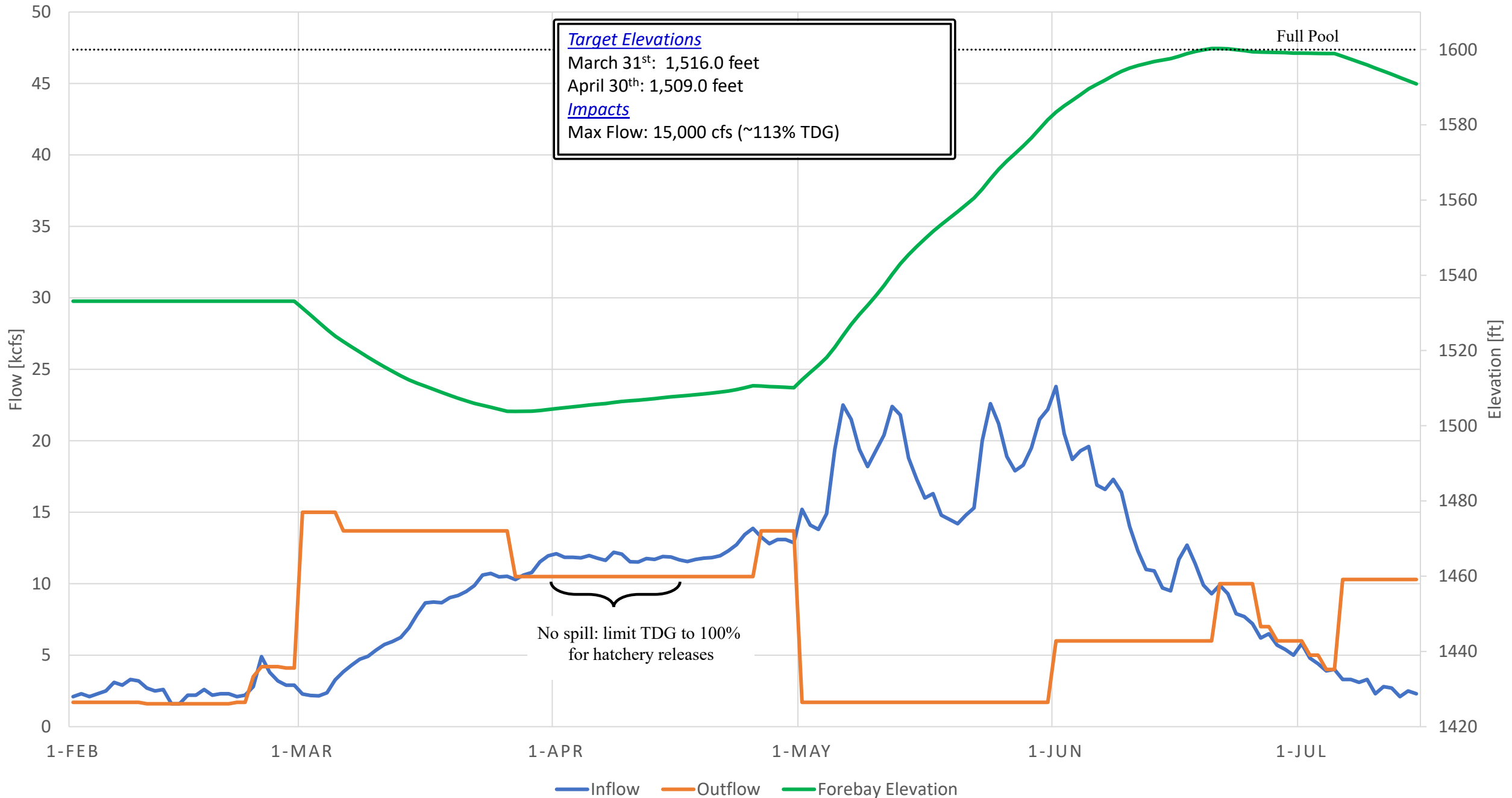
DWORSHAK OPERATIONS IN EARLY RUNOFF SCENARIO - 2014 ANALOG YEAR



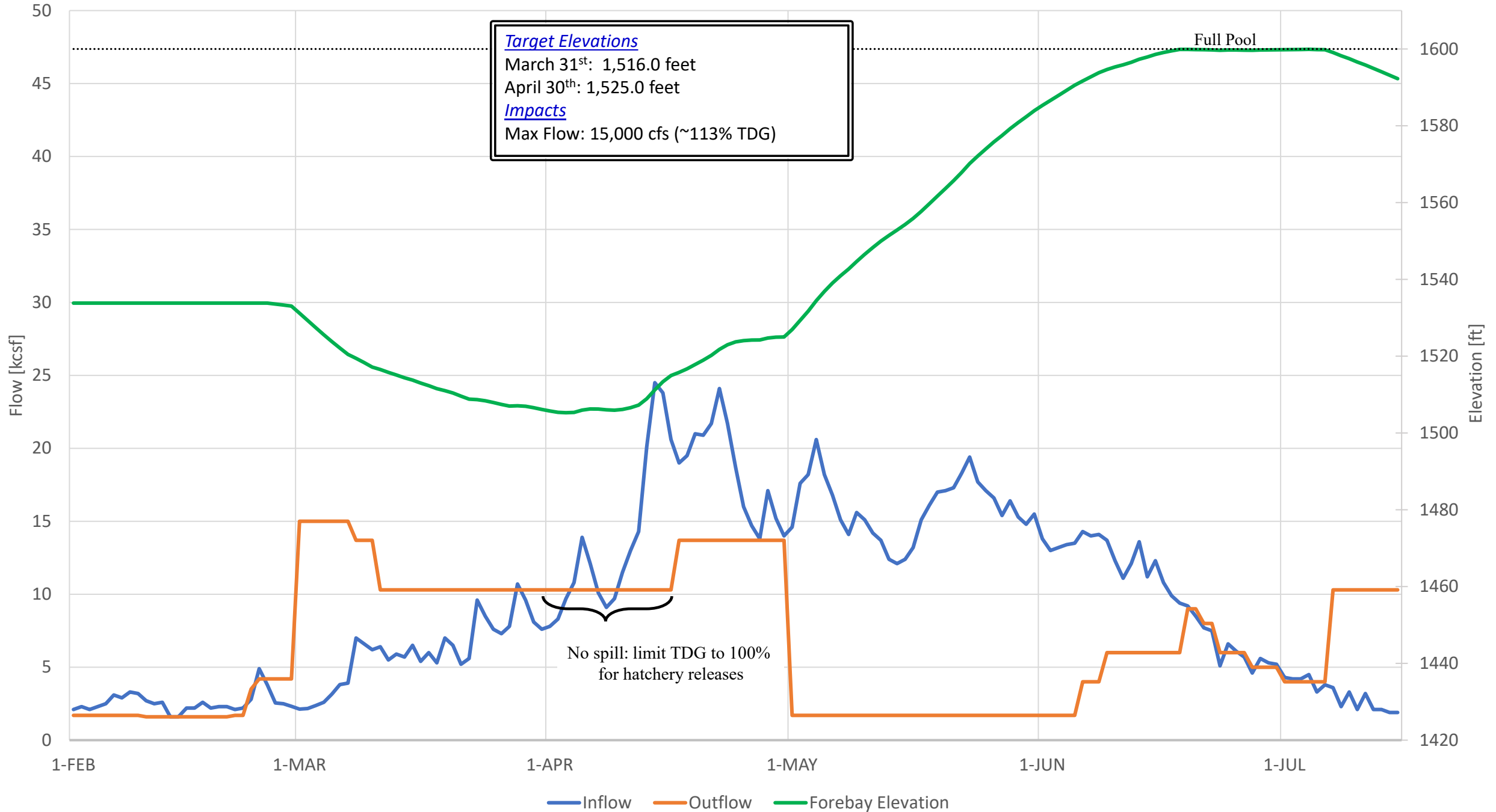
DWORSHAK OPERATIONS IN EARLY RUNOFF SCENARIO - 2017 ANALOG YEAR



DWORSHAK OPERATIONS - STP



DWORSHAK OPERATIONS WITH FALLING FORECAST SCENARIO - 2000 ANALOG YEAR





SUMMARY



- Hatchery releases scheduled March 31st to April 14th
 - Targeting 100% TDG
- Limiting time above 110% TDG to minimize impacts to the hatchery and in-river fish while meeting March and April FRM targets
- Constantly analyzing the inflow forecast, snowpack, and April WSF for the opportunity to keep TDG below 110%

- Tentative flow schedule through mid-March
 - March 1st - 5th: 15,000 cfs (~113% TDG)
 - March 6th -12th: 13,700 cfs (~110% or lower TDG)
 - Subject to change early next week based on forecast and basin conditions