

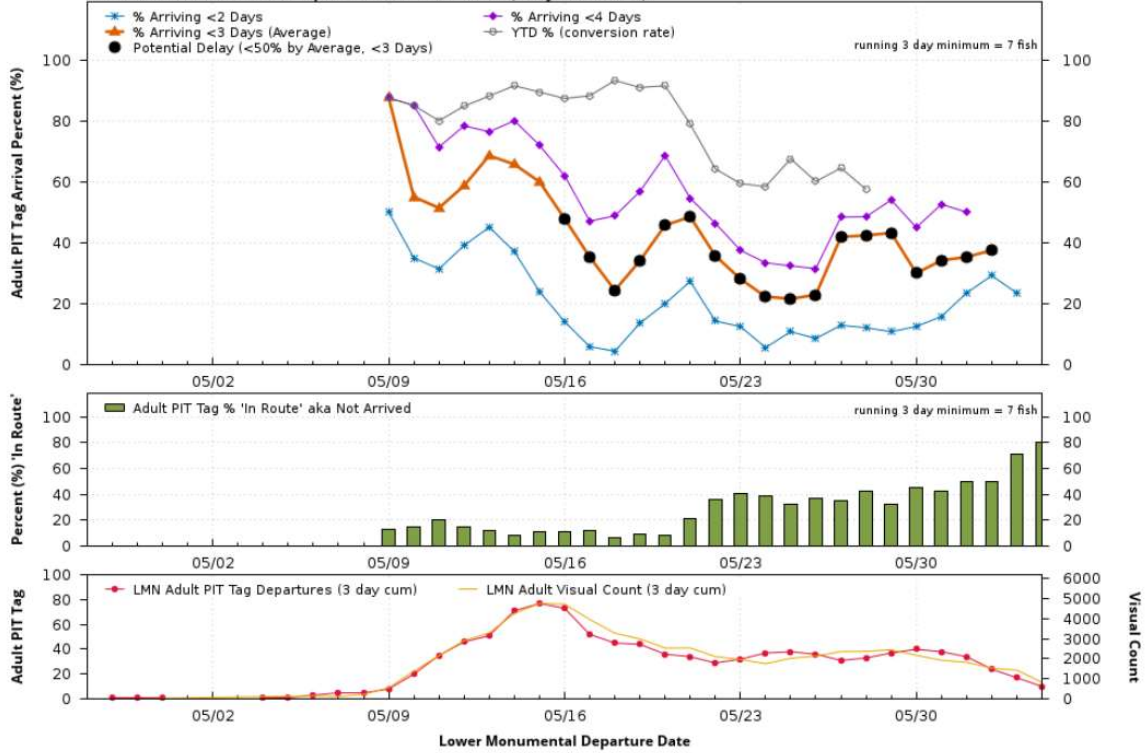
**Running 3 Day - Lower Monumental to Little Goose Travel Days and Run Size**  
**2019 Adult PIT Tagged All Spring Summer Chinook Released at/above Lower Granite**  
**Unique TagIDs Departing Lower Monumental (337) through 06/04**

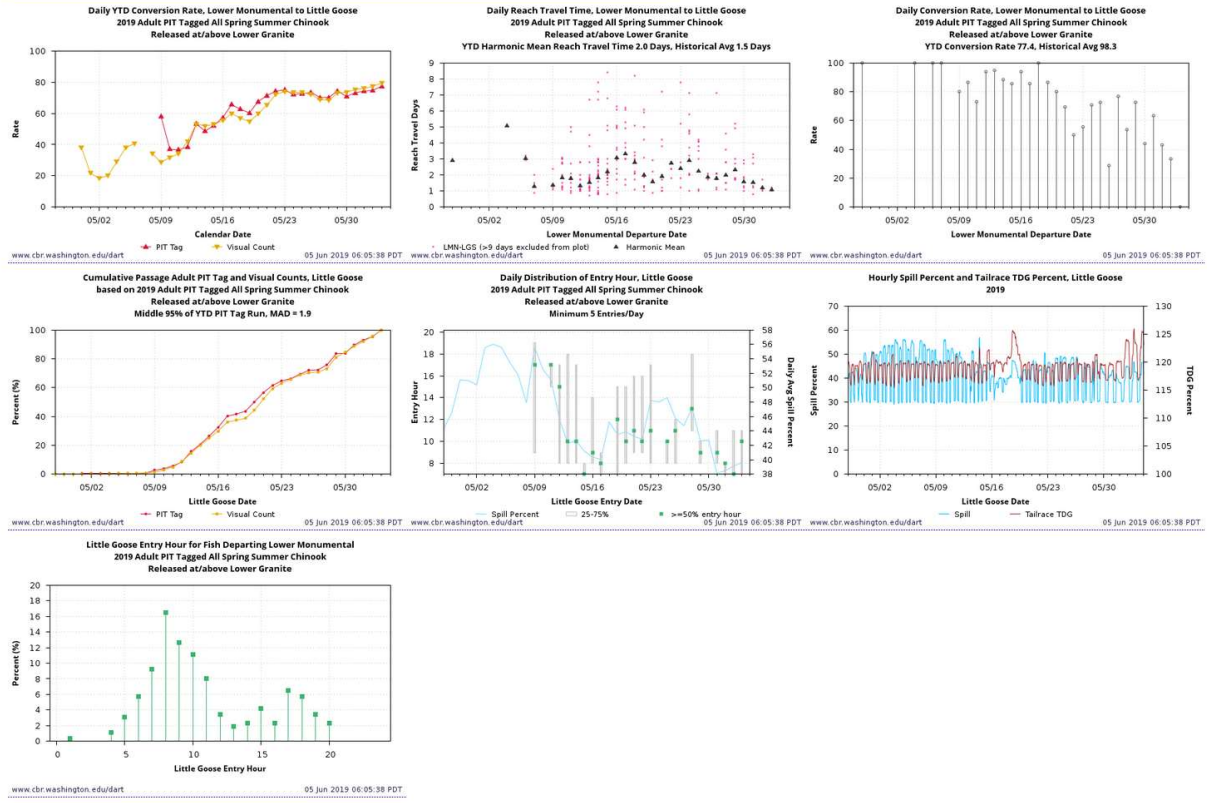
YTD Conversion Rate 77.4, YTD Harmonic Mean Travel Time 2.0

*Top: Cumulative Arrival Percent by Days in Route to Little Goose by Lower Monumental Departure Date*

*Middle: Percent in Route to Little Goose by Lower Monumental Departure Date*

*Bottom: Lower Monumental Departures and Visual Counts (3 Day Cumulative)*





Little Goose Entry Hour for Fish Departing Lower Monumental  
2019 Adult PIT Tagged All Spring Summer Chinook  
Released at/above Lower Granite

Lower Monumental Departure Date	Adult PIT Tag Data for Fish Departing LMN, grouped by Departure Date										Other Data by Calendar Date																		
	Departure Events LMN	LOS Entry Events for Fish departing LMN	Unique Tag/DL LMN	Fish departing LMN with history of >1 ascents	% Fish departing LMN with history of >1 ascents	Cumulative Arrival Percent Little Goose Calendar Days after LMN Departure = shaded gray; 50% arrival day = shaded gold; ConRate < 5% (fallback, delay, wander, harvest, mortality can all attribute to <5%)						Harmonic Mean Reach TRT (days) for date	Calendar Date	Unique Tag/DL Entry LOS on calendar date for Fish departing LMN during Period	Adult Visual Counts LMN LGS	MAD Adult PIT Tag and Visual Counts Cumulative Arrival % LGS	LOS Hour of 50% Entry for date	Little Goose River Conditions				Lower Monumental TDG Forebay	Total Smolt Index LGS						
YTD	350	281	337			0	1	2	3	4	5	6	77.4	2.0	YTD	281	17851		Outflow	Spill	Spill%	Min Elev	Temp C	Tailrace	Tailrace				
2019-05-03	4	4	4			0.0	20.5	43.9	58.5	62.9	66.8	70.6			2019-05-03	12	407	793	10	148.0	58.6	39.0	633.4	634.8	14.7	121.4	122.2	22.03	
2019-05-02	6	2	6			0.0	33.3	33.3						1.1	2019-05-02	6	414	624	0.2	7	146.5	57.4	39.1	633.4	634.6	14.5	121.3	122.5	26.53
2019-05-01	7	3	7			0.0	28.0	42.9	42.9					1.2	2019-05-01	9	611	586	1.0	8	143.4	55.2	38.5	633.6	632.0	14.1	120.5	121.5	20.10
2019-05-31	11	7	11			0.0	27.3	35.4	63.6	63.5				1.6	2019-05-31	15	500	750	0.9	9	142.9	54.4	38.1	633.6	634.1	13.8	120.1	121.7	20.17
2019-05-30	16	7	16			0.0	18.8	31.3	43.6	43.8	43.8			1.4	2019-05-30	1	705	610	0.7	10	128.0	54.2	42.7	633.6	634.0	13.4	119.6	121.4	15.40
2019-05-29	11	8	11			0.0	0.0	35.4	34.5	54.5	72.7			2.4	2019-05-29	20	720	1404	2.4	9	122.3	52.1	42.0	633.6	634.0	13.1	119.5	120.7	14.29
2019-05-28	13	7	13			0.0	15.4	23.1	35.5	45.2	53.8	53.8		2.0	2019-05-28	9	739	449	2.6	13	115.5	54.5	47.2	633.7	634.2	12.8	121.4	121.2	17.41
2019-05-27	13	10	13			0.0	15.4	69.2	69.2	69.2	69.2	76.3		1.6	2019-05-27	1	980	89	1.0	12	121.8	54.5	44.7	633.9	634.1	12.5	119.5	121.2	17.55
2019-05-26	7	2	7			0.0	0.0	28.0	28.0	28.0	28.0	28.6		1.6	2019-05-26	7	639	259	1.7	11	118.0	54.2	45.7	633.7	634.1	12.3	119.7	120.4	20.14
2019-05-25	11	8	11	2	18.2	0.0	18.2	18.2	35.4	72.7	72.7	72.7		2.1	2019-05-25	8	725	519	0.5	10	112.1	54.5	48.6	633.6	634.1	12.1	119.6	119.3	19.10
2019-05-24	18	12	17	3	17.6	0.0	5.9	23.5	29.4	35.3	38.8	59.8	70.6	2.9	2019-05-24	4	765	492	0.4	11	113.1	54.3	45.0	633.6	633.9	11.9	119.8	119.1	18.19
2019-05-23	9	5	9	2	22.2	0.0	11.1	22.2	33.3	33.3	44.4	44.4	55.6	2.4	2019-05-23	8	527	652	1.6	11	115.9	59.9	48.2	633.4	633.8	11.8	119.9	120.0	33.62
2019-05-22	10	5	10			0.0	0.0	20.0	40.0	40.0	40.0	50.0		2.7	2019-05-22	13	456	1260	2.2	10	126.1	54.0	42.8	633.4	634.0	11.4	119.2	119.1	42.76
2019-05-21	13	9	13			0.0	23.1	38.5	38.5	53.8	53.8	63.2		1.9	2019-05-21	17	979	1410	4.4	11	125.3	54.2	43.3	633.4	633.9	11.3	119.4	119.0	47.97
2019-05-20	6	4	6			0.0	20.0	60.0	60.0	60.0	60.0	80.0		1.6	2019-05-20	17	665	1008	5.8	10	123.0	54.0	43.9	633.3	633.8	11.4	119.6	119.7	75.28
2019-05-19	15	13	15			0.0	33.3	53.3	60.0	66.7	73.3	86.7		5	2019-05-19	5	890	239	4.9	12	124.0	53.9	43.5	633.2	633.5	11.9	119.3	125.0	92.02
2019-05-18	15	15	15	1	6.7	0.0	6.7	33.3	73.3	73.3	80.0	90.0	100.0	2.4	2019-05-18	4	972	218	4.4	10	165.1	74.7	45.2	633.4	633.9	12.0	124.5	121.8	85.94
2019-05-17	14	12	14	2	14.3	0.0	0.0	14.3	35.7	58.6	64.3	78.8	85.7	3.4	2019-05-17	20	1120	1118	4.0	8	150.4	80.2	40.0	633.3	633.6	12.3	120.8	118.4	89.96
2019-05-16	16	15	16			0.0	8.3	25.0	37.5	58.6	66.6	81.3	93.9	3.1	2019-05-16	16	1174	862	2.6	9	134.5	54.3	40.4	633.4	633.9	12.7	120.1	122.0	29.82
2019-05-15	22	15	21	1	4.8	0.0	9.5	37.1	61.9	61.9	71.4	71.4	85.7	2.2	2019-05-15	15	1054	943	1.3	7	131.8	54.3	41.2	633.4	633.8	12.8	119.8	120.9	64.39
2019-05-14	35	30	34	1	2.9	0.0	20.6	52.9	73.5	73.5	73.5	73.5	88.2	1.6	2019-05-14	13	1888	918	0.9	10	126.8	54.1	42.7	633.4	633.9	12.7	119.6	119.1	65.94
2019-05-13	20	19	20			0.0	45.0	75.0	80.0	90.0	90.0	95.0		1.4	2019-05-13	19	1208	1056	1.0	10	128.3	54.2	42.2	633.3	634.0	12.8	120.0	119.3	95.16
2019-05-12	16	15	16			0.0	62.5	81.3	93.8	93.8	93.8	93.8	93.9	1.4	2019-05-12	7	1147	681	0.3	15	118.1	53.9	45.6	633.3	633.7	12.8	119.6	121.3	55.46
2019-05-11	15	11	15	1	6.7	0.0	20.7	46.7	53.3	53.3	66.7	66.7	73.3	1.8	2019-05-11	5	927	361	0.8	17	106.2	54.2	51.0	633.7	634.1	13.1	119.8	122.4	46.014
2019-05-10	15	13	15			0.0	20.7	46.7	66.7	66.7	66.7	86.7		1.8	2019-05-10	3	828	286	0.9	10	103.2	54.2	52.5	633.7	634.0	13.4	119.9	121.7	81.120
2019-05-09	5	4	5			0.0	60.0	80.0	80.0	80.0	80.0	90.0		1.4	2019-05-09	5	399	92	1.4	17	97.5	54.3	55.5	633.6	634.0	13.3	119.7	121.7	78.115
2019-05-08															2019-05-08	1	152	35			113.1	54.2	47.9	633.5	634.0	12.6	119.5	121.1	84.277
2019-05-07	3	3	3			0.0	33.3	100.0	100.0	100.0	100.0	100.0		1.3	2019-05-07					104.2	54.0	51.8	633.4	633.8	11.9	119.6	122.1	87.096	
2019-05-06	2	2	2			0.0	0.0	0.0	100.0	100.0	100.0	100.0		3.0	2019-05-06		71	34			101.1	54.1	53.5	633.4	634.2	11.4	119.8	120.8	48.962
2019-05-05															2019-05-05	40	29				97.5	54.2	55.8	633.6	634.0	10.8	119.6	121.9	74.993
2019-05-04	1	1	1			0.0	0.0	0.0	0.0	0.0	100.0	100.0		5.1	2019-05-04	43	22				97.1	54.4	56.0	633.7	634.1	10.6	119.9	122.3	75.485
2019-05-03															2019-05-03	38	9				98.1	54.5	55.6	633.6	634.1	10.4	119.6	120.6	97.380
2019-05-02															2019-05-02	25	3				108.4	54.6	50.4	633.7	634.1	10.3	119.4	119.4	117.254
2019-05-01															2019-05-01	1	25	2			107.1	54.6	51.0	633.6	634.1	10.2	119.4	119.5	142.672
2019-04-30															2019-04-30	15	5				111.0	56.7	51.1	633.6	634.1	10.2	120.9	119.5	141.371
2019-04-29															2019-04-29	4	0				121.2	56.4	48.5	633.6	634.4	10.2	119.6	119.9	168.283
2019-04-28	1	1	1			0.0	0.0	0.0	100.0	100.0	100.0	100.0		2.1	2019-04-28	2	3				128.0	56.6	44.2	633.1	634.1	10.3	119.3	119.9	216.872

1. Arrivals for 2019 may be incomplete. YTD and Daily statistics may change and update as the year progresses.